

TEST REPORT

REPORT NUMBER: B08GE6003-FCC-PART15B

ON

Type of Equipment: GSM Mobile Phone
Type of Designation: S7
Manufacturer: SODIFF BMT

ACCORDING TO

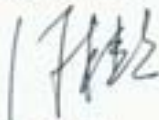
Part 15B: Radio Frequency Devices, Sep 20, 2007

China Telecommunication Technology Labs.

Month date, year

Aug, 01, 2008

Signature



He Guili

Director

FCC ID: WJG-S7
Report Date: 2008-08-01

Test Firm Name: China Telecommunication Technology Labs
Registration Number: 840587

Statement

The measurements shown in this report were made in accordance with the procedures described on test pages. All reported tests were carried out on a sample equipment to demonstrate limited compliance with FCC CFR 47 Parts 15B. The sample tested was found to comply with the requirements defined in the applied rules.

CONTENTS

1 GENERAL INFORMATION	4
1.1 NOTES	4
1.2 TESTERS.....	5
1.3 TESTING LABORATORY INFORMATION	6
1.4 DETAILS OF APPLICANT OR MANUFACTURER	7
2 TEST ITEM	8
2.1 GENERAL INFORMATION	8
2.2 OUTLINE OF EUT.....	8
2.3 MODIFICATIONS INCORPORATED IN EUT.....	8
2.4 EQUIPMENT CONFIGURATION	8
2.5 OTHER INFORMATION	8
3 SUMMARY OF TEST RESULTS	9
4 TEST RESULTS	10
4.1 RADIATED EMISSION.....	10
4.2 CONDUCTED EMISSION.....	13
ANNEX A EXTERNAL PHOTOS.....	16
ANNEX B INTERNAL PHOTOS.....	20
ANNEX C DEVIATIONS FROM PRESCRIBED TEST METHODS.....	23

1 General Information

1.1 Notes

All reported tests were carried out on a sample equipment to demonstrate limited compliance with FCC CFR 47 Parts 15B.

The test results of this test report relate exclusively to the item(s) tested as specified in section 2.

The following deviation from, additions to, or exclusions from the test specifications have been made. See Annex C.

China Telecommunication Technology Labs.(CTTL) authorizes the applicant or manufacturer (see section 1.4) to reproduce this report provided, and the test report may only be reproduced or published in full. Reproduction or publication of extracts from the report requires the prior written approval of CTTL Mr. He Guili.

Any use which a third party makes of this report, or any reliance on or decisions to be made based on it, are the responsibility of such third parties. CTTL accepts no responsibility for damages, if any, suffered by any third party as a result of decisions made or actions based on this report.

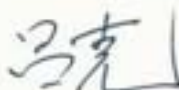
FCC Parts 15B
Equipment: S7

REPORT NO.: B08GE6003-FCC-PART15B

1.2 Testers

Name: Lv Ke
Position: Engineer
Department: Department of EMC test

Signature:



Name: Li Dongjin
Position: Engineer
Department: Department of EMC test

Signature:

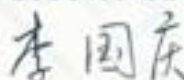


Editor of this test report:

Name: Li Guoqing
Position: Engineer
Department: Department of EMC test

Date: 2008-08-01

Signature:

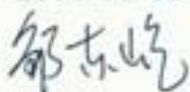


Technical responsibility for area of testing:

Name: Zou Dongyi
Position: Manager
Department: Department of EMC test

Date: 2008-08-01

Signature:



1.3 Testing Laboratory information

1.3.1 Location

Name: China Telecommunication Technology Labs.
Address: No. 11, Yue Tan Nan Jie, Xi Cheng District
BEIJING
P. R. CHINA, 100083
Tel: +86 10 68094053
Fax: +86 10 68011404
Email: emc@chinattl.com

1.3.2 Details of accreditation status

Accredited by: China National Accreditation Service for Conformity
Assessment (CNAS)
Registration number: CNAS Registration No. CNAS L0570
Standard: ISO/IEC 17025:2005

1.3.3 Test location, where different from section 1.3.1

Name: -----
Street: -----
City: -----
Country: -----
Telephone: -----
Fax: -----
Postcode: -----

1.4 Details of applicant or manufacturer

1.4.1 Applicant

Name: SODIFF BMT

Address: 678-7, ChangMan-Ri, GwangTan-Myun, Paju-City,
Gyeonggi-Do, Korea

Country: Rep. Of Korea

Telephone: +82.70.7096.0713

Fax: +82.31.441.0171

Contact: Mr. Steve Noh

Telephone: +82.10.8568.4145

Email: Sinoh76@sodiff.net

1.4.2 Manufacturer (if different from applicant in section 1.4.1)

Name: --

Address: --

1.4.3 Manufactory (if different from applicant in section 1.4.1)

Name: --

Address: --

2 Test Item

2.1 General Information

Manufacturer: SODIFF BMT
Name: GSM Mobile phone
Model Number: S7
Serial Number: --
Production Status: Production
Receipt date of test item: 2008-07-24

2.2 Outline of EUT

E.U.T. is a GSM/GPRS Mobile phone.

2.3 Modifications Incorporated in EUT

The EUT has not been modified from what is described by the brand name and unique type identification stated above.

2.4 Equipment Configuration

Equipment configuration list:

Item	Generic Description	Manufacturer	Type	Serial No.	Remarks
A	handset	SODIFF BMT	S7	--	None
B	adapter	Shenzhen Zhong Xin Tong Co.,Ltd. ZHUHAI REMINDA COMMUNICATION DEVELOPMENT CO., LTD.	ZXTSC01-5005 00	--	None
C	battery	SHENZHEN BAK BATTERY CO.,LTD	BAT-02	--	None
D	Earphone	SANG FAI ELECTRONICAL PRODUCTS CO., LTD.	SF-600KM-1	--	None

Cables:

Item	Cable Type	Manufacturer	Length	Shield	Quantity	Remarks
1	DC cable on Adapter	Unknown	1.0 m	No	1	None

2.5 Other Information

(a) Version of hardware and software

HW Version(Handset):

2.0

SW Version(Handset):

SGP500 MXC1NC_MT2706BV105_MP

(b)Adaptor information:

Input: 100-240VAC 50/60Hz 0.2A

Output: 5.0V 500mA

(c) Battery information:

3.7VDC 680mAh

3 Summary of Test Results

A brief summary of the tests carried out is shown as following.

Specification Clause	Name of Test	Result
15.109	Radiated Emission	Pass
15.107	Conducted Emission	Pass
Note: The EUT complies with the requirements of the Class B digital devices.		

4 Test Results

4.1 Radiated Emission

Specifications:	15.109, ANSI C63.4-2003					
Date of Tests	2008-07-25					
Test conditions:	Ambient Temperature: 15°C -35°C Relative Humidity: 30%-60% Air pressure: 86-106kPa					
Operation Mode	TX on					
Test Results:	Pass					
Test equipment Used:						
Asset Number	Description	Manufacturer	Model Number	Serial Number	Cal Due	State
7805	EMI Test Receiver	R/S	ESI26	100211	2009-01-03	Normal
7330	Ultra Broadband Antenna	SCHWARZBECK	VULB 9160	--	2010-10-26	Normal
7330	Double-Ridged Horn Antenna	R/S	HF906	100037	2009-01-14	Normal
713	Fully-Anechoic Chamber	ETS	11.8m×6.5m×6.3m	--	2010-11-17	Normal
023	Wireless Communications Test Set	Agilent	8960(E5515C)	GB41450323	2008-06-13	Normal
Ancillary Equipment used						
996	PC	HP	VL400	CN11205610	--	Normal

Limit Level Construction:

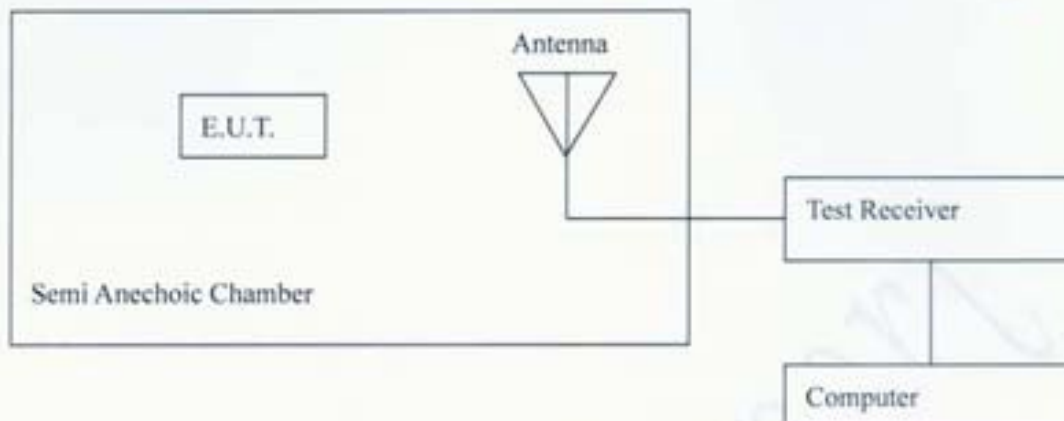
According to Part 15.109(a).

Limits

Frequency [MHz]	Field Strength [μ V/m]	Field Strength [dB μ V/m]	Measurement distance [m]
30 -88	100	40.0	3
88-216	150	43.5	3
216 – 960	200	46.0	3
Above 960	500	54.0	3

Note: The tighter limit applies at the band edges.

Test Configuration



The measuring distance between E.U.T and antenna is 3m.

Test Setup:

The EUT was placed in an anechoic chamber, see figure RE. The EUT is tested as tabletop EUT. The EUT is positioned on an 80cm height wood table.

The EUT is used as the peripheral equipment of the PC.

The setup is according to Figure 11a of ANSI C63.4-2003.

The Wireless Communications Test Set (Test Simulator) was used to set the TX channel and power level and modulate the TX signal with different bit patterns.

The test was done using an automated test system, where all test equipments were controlled by a computer.



Figure RE

FCC Parts 15B
Equipment: S7

REPORT NO.: B08GE6003-FCC-PART15B

Test Method

During the test, the EUT was operating in its typical mode. The test method is according to ANSI C63.4-2003. The measurement was done by the automated test system.

Note: --

Test Data:

Frequency [MHz]	Level [dB μ V/m]	Limit [dB μ V/m]	Antenna Height [cm]	Turntable Azimuth [degree]	Antenna Polarisation (V/H)
30.360000	28.8	40	100	224	VERTICAL
123.960000	24.5	43.5	100	45	VERTICAL
298.320000	37.5	46	100	99	HORIZONTAL
399.720000	38.0	46	105	312	HORIZONTAL
497.760000	44.5	46	100	21	HORIZONTAL
877.560000	37.6	46	100	297	HORIZONTAL
Remarks: --					

Graphical Results:



Graphical results

4.2 Conducted Emission

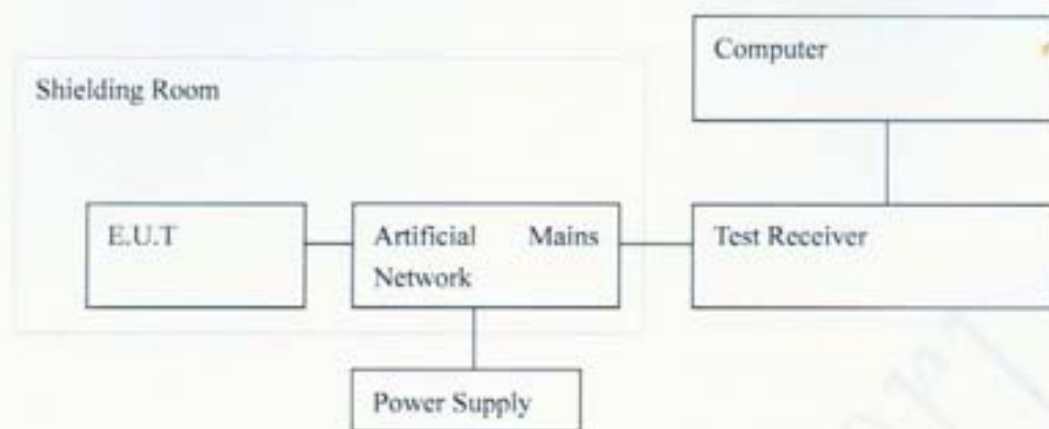
Specifications:	15.107, ANSI C63.4-2003					
Date of Tests	2008-08-01					
Test conditions:	Ambient Temperature:15℃-35℃ Relative Humidity:30%-60% Air pressure: 86-106kPa					
Operation Mode	TX on					
Test Results:	Pass					
Test equipment Used:						
Asset Number	Description	Manufacturer	Model Number	Serial Number	Cal Due	State
7330	EMI Test Receiver	R/S	ESI40	839283/007	2009-02-03	Normal
7330	Artificial Mains Network	R/S	ESH2-Z5	837480/002	2009-01-09	Normal
714	Shielding Room	ETS	--	19003	2010-11-17	Normal
023	Wireless Communications Test Set	Agilent	8960(E5515C)	G841450323	2008-06-13	Normal
Ancillary Equipment used						
996	PC	HP	VL400	CN11205610	--	Normal

Limit Level Construction:
According to Part 15.107 (a)

Limits for Conducted Emission		
Frequency of Emission [MHz]	Conducted limit [dB μ V]	
	Quasi-peak	Average
0.15 - 0.5	66 to 56*	56 to 46*
0.5 - 5	56	46
5 - 30	60	50

* Decreases with the logarithm of the frequency.

Test Configuration



Test Setup:

The EUT was placed in a shielding room, see figure CE. The EUT is positioned on an 80cm height wood table. The EUT is used as the peripheral equipment of the PC.

The setup is according to Figure 10a of ANSI C63.4-2003.

The Wireless Communications Test Set (Test Simulator) was used to set the TX channel and power level and modulate the TX signal with different bit patterns. The test was done using an automated test system, where all test equipments were controlled by a computer.



Figure CE

During the test, the EUT was operating in its typical mode. The test method is according to ANSI C63.4-2003. The AC power line of the Notebook was connected to the artificial mains network then to EMI receiver. The measurement was done by the automated test system.

Note: --

[illegible]

Level [dB]

Frequency [Hz]

Line Style	Label	Value	Unit
KMS	B0BGE6003C2	QF	
+MRS	B0BGE6003C2	AV	
MRS	B0BGE6003C2	PK	
HRS	B0BGE6003C2	AV	

Graphical results

Annex A External Photos



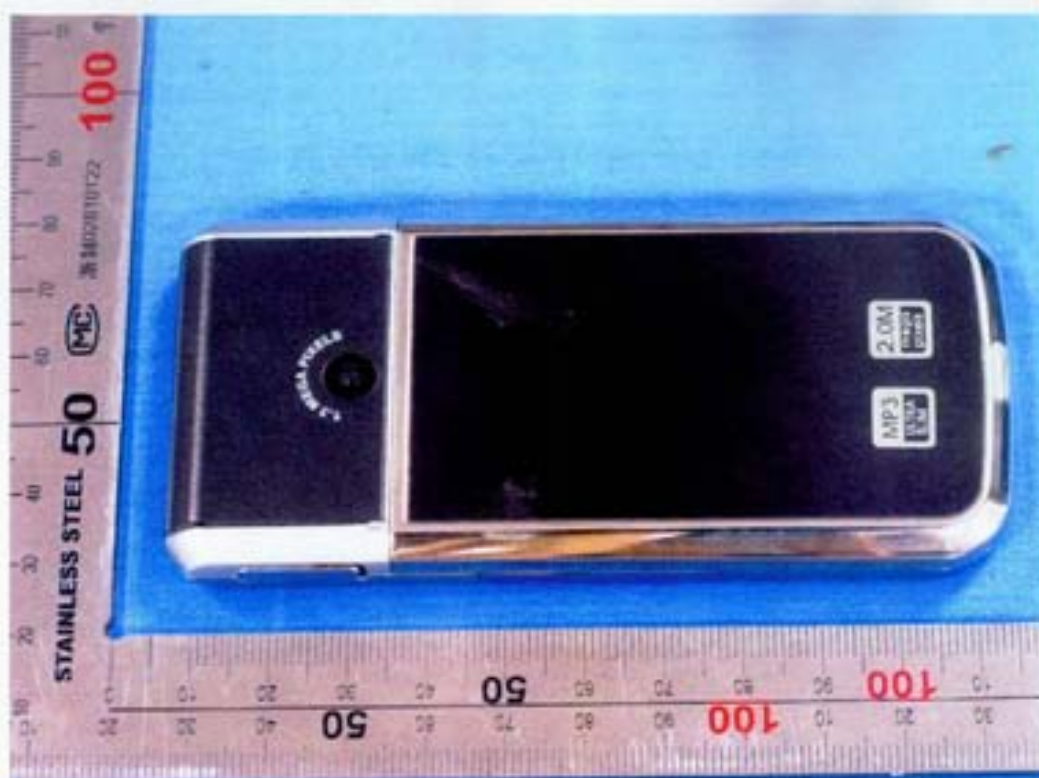
Front view with clip colse



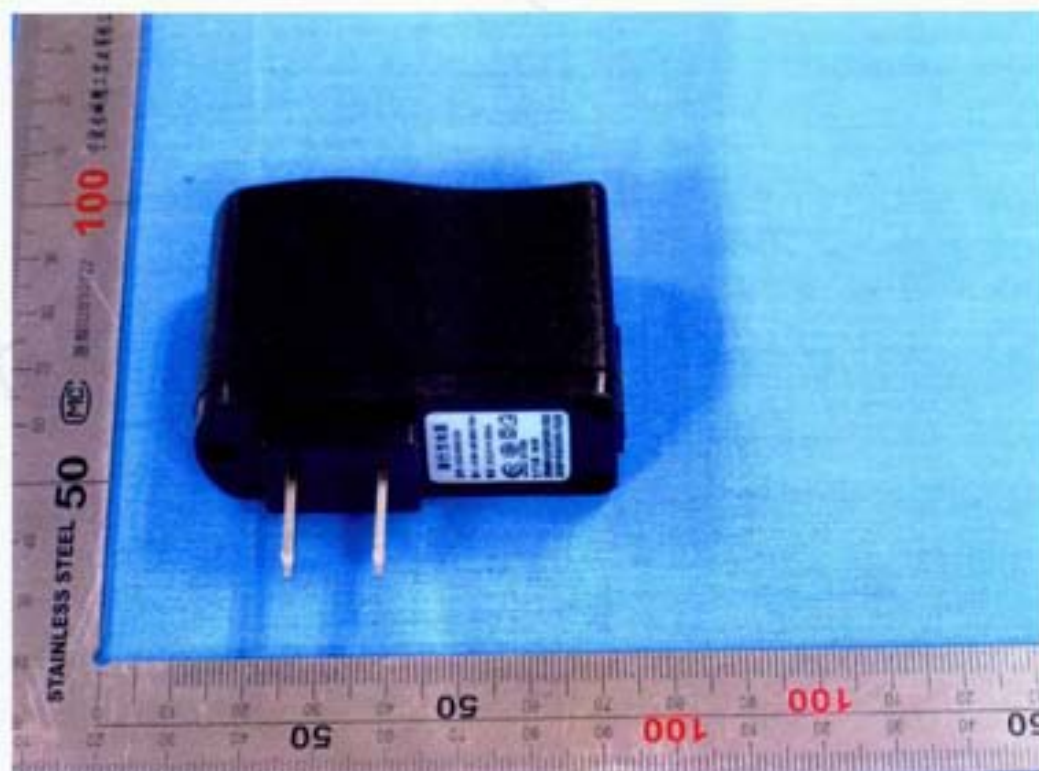
Front view with clip open

FCC Parts 15B
Equipment: S7

REPORT NO.: B08GE6003-FCC-PART15B



Back view



Adaptor

FCC Parts 15B
Equipment: S7

REPORT NO.: B08GE6003-FCC-PART15B



Cable



Battery

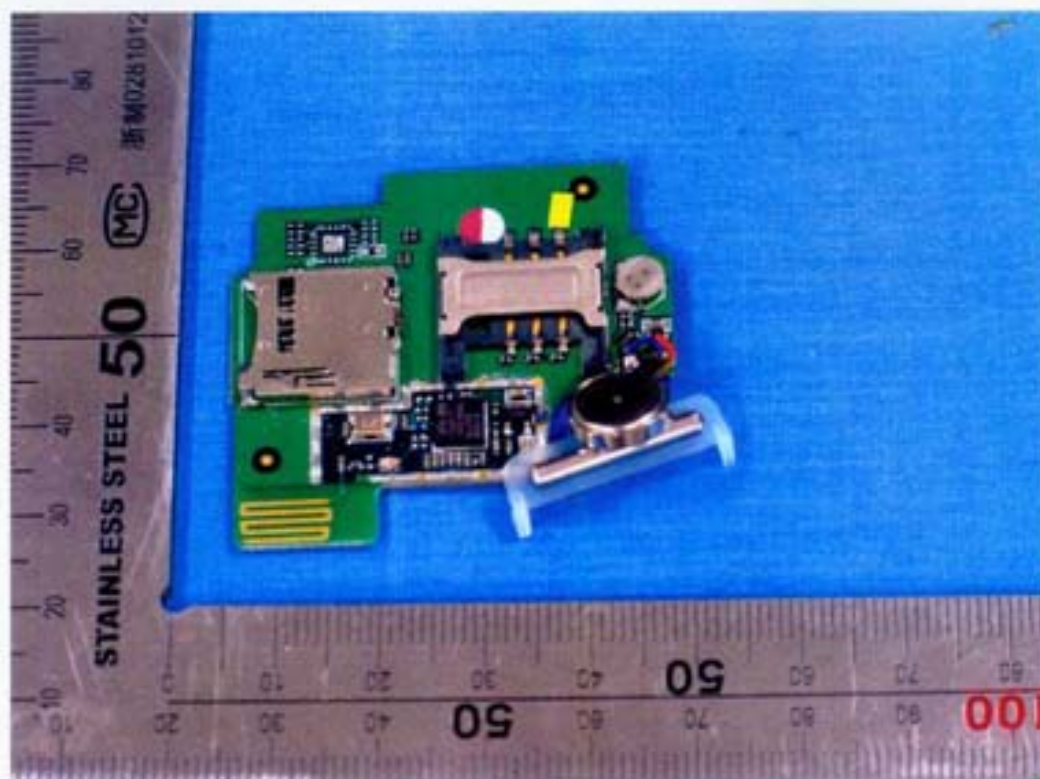
FCC Parts 15B
Equipment: S7

REPORT NO.: B08GE6003-FCC-PART15B

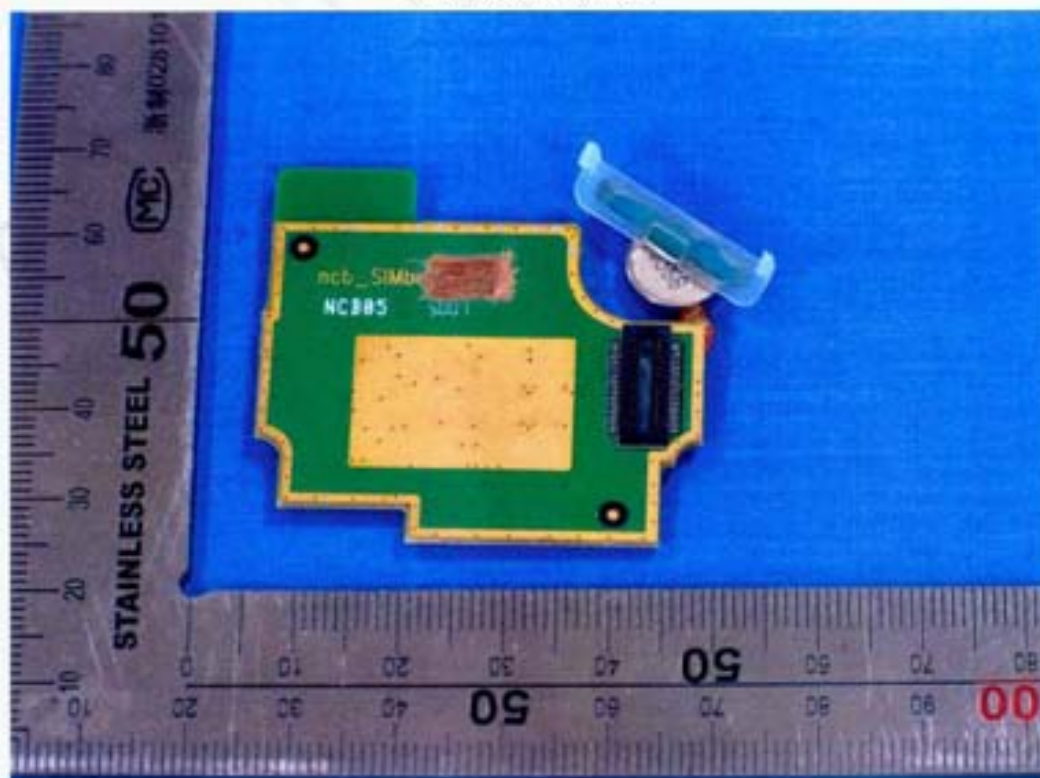


Earphone

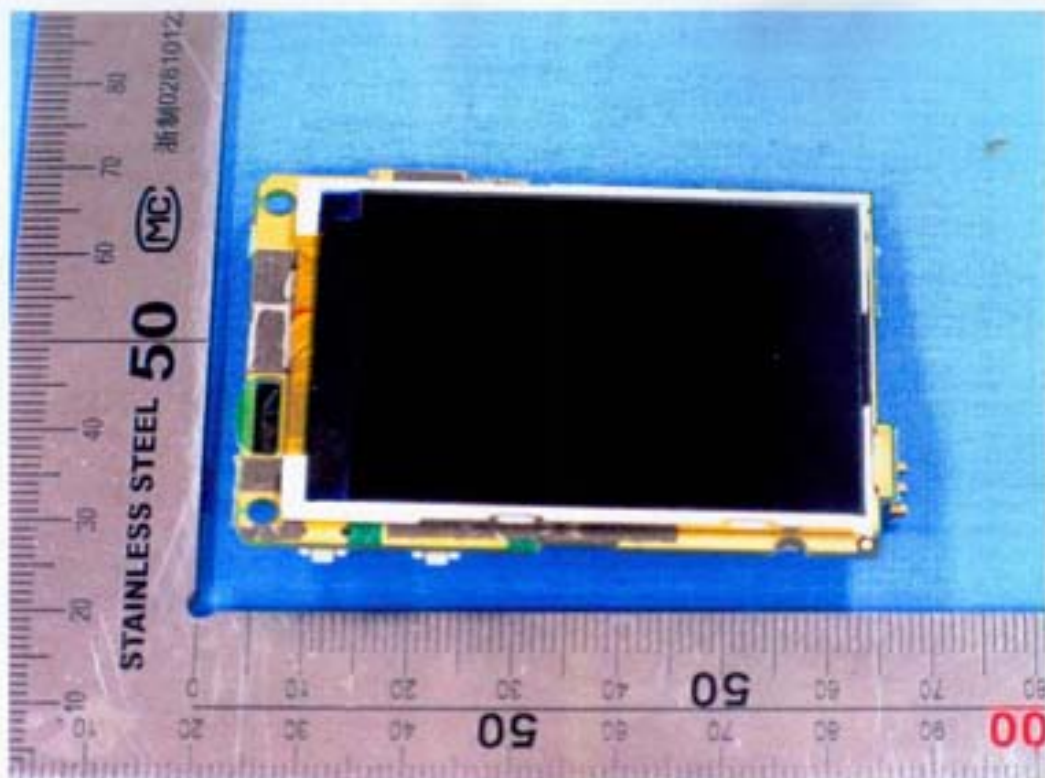
Annex B Internal Photos



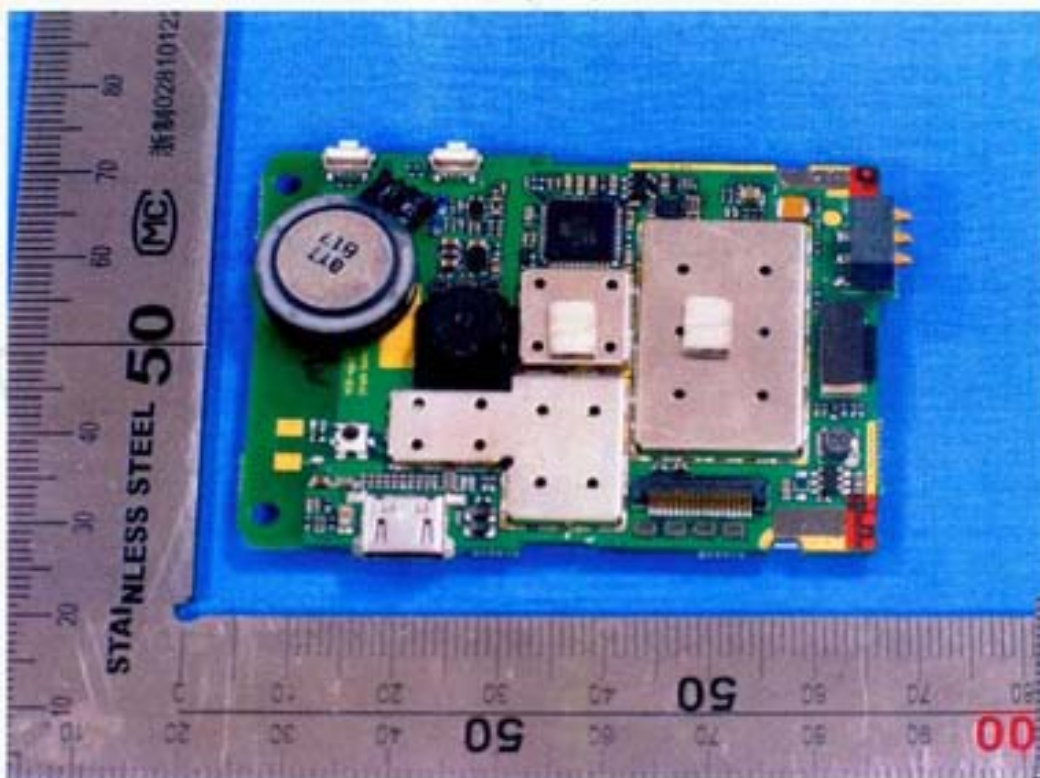
Main board (face)



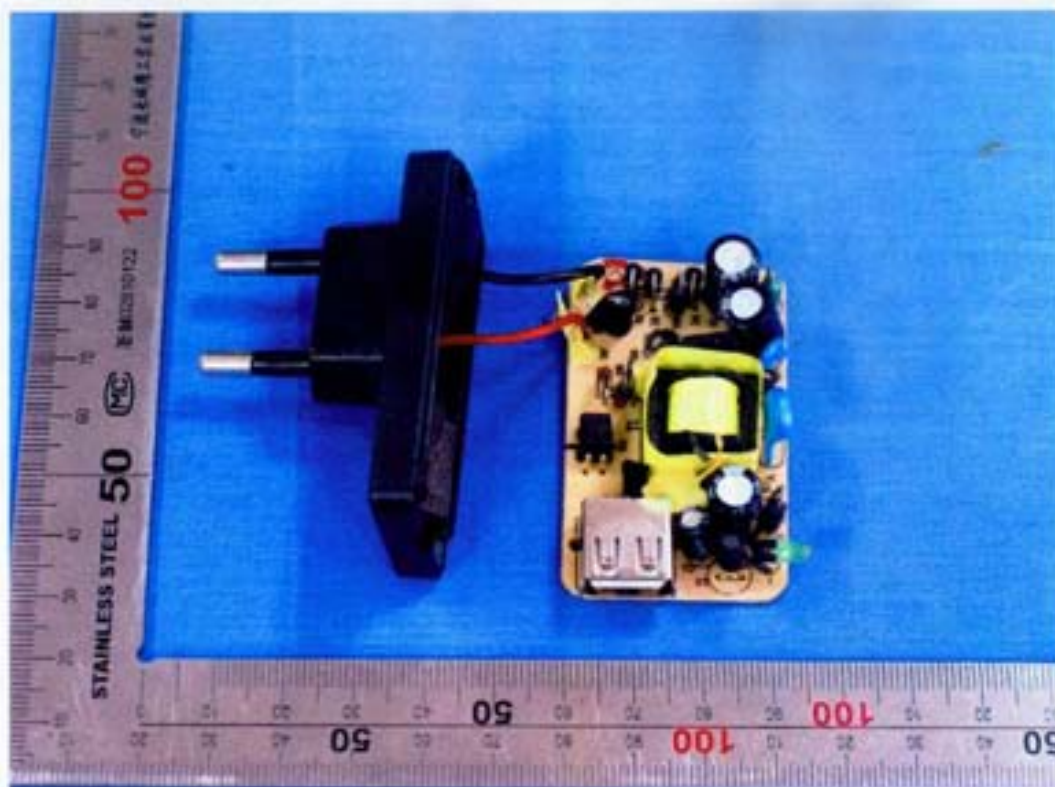
Main board (back)



LCD (face)



LCD(back)



Adaptor (face)



Adaptor (back)

ANNEX C Deviations from Prescribed Test Methods

No deviation from Prescribed Test Methods.

———— The End of this Report ————