

ANTENNA SPECIFICATION

Client:	Avantree
Model:	SP402
Antenna type:	PCBA antenna
Version:	V1.0
Issued Date:	11-Feb-25

Contents

1. Revision History
2. Introduction
3. Electrical Characteristics

1.Revision History

THIS DRAWINGS AND SPECIFICATIONS ARE THE PROPERTY OF SUNITEC ENTERPRISE CO.,LTD.AND SHALL NOT BE REPRODUCED OR USED AS THE BASIS FOR THE MANUFACTURE OR SALE OF APPARATUS OR DEVICES WITHOUT PERMISSION



深圳市丰禾原电子科技有限公司
SUNITEC ENTERPRISE CO.,LTD.

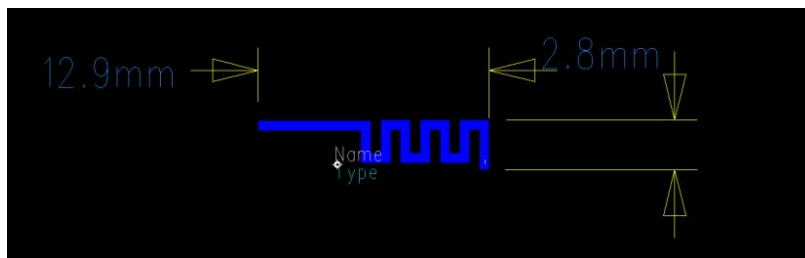
Rev.No	Issued Date	Description	Summary
V1.0	11-Feb-25	initial release	

2. Introduction

2.1 Introduction of Product

This product is print Bluetooth antenna on PCB

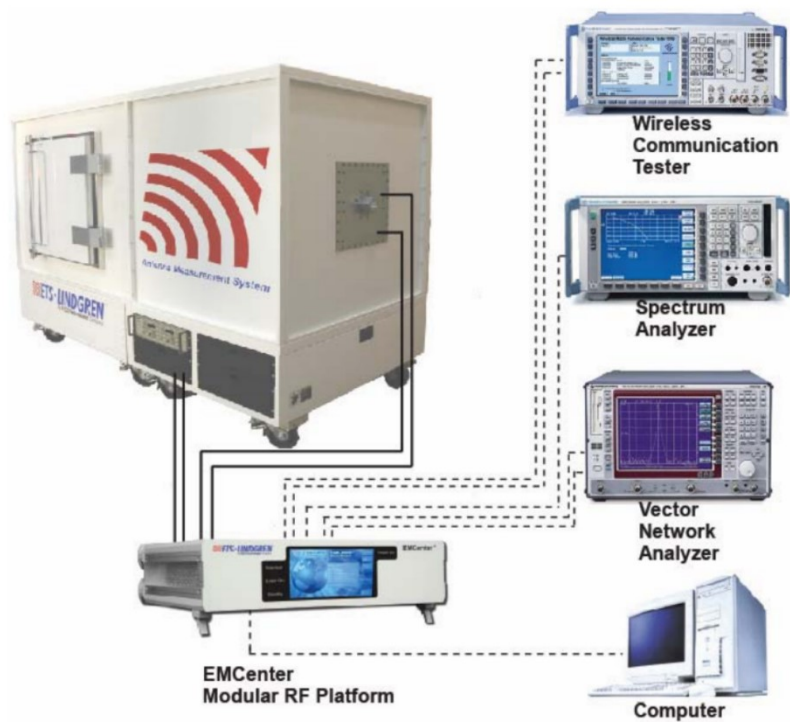
2.2 Specification and Dimension



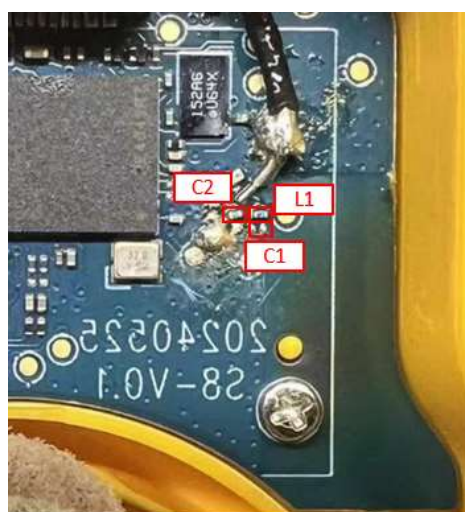
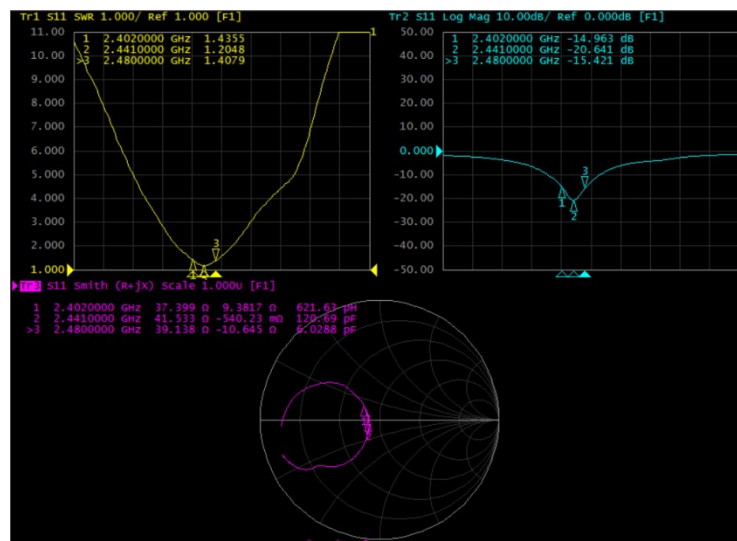
3. Electrical Characteristics

3.1 Test equipment:

VECTOR NETWORK ANALYZER
Agilent E5071c
Antenna Measurement System
ETS-Lindgren Antenna Measurement System



3.2 Antenna S11 parameters



ANT matching:

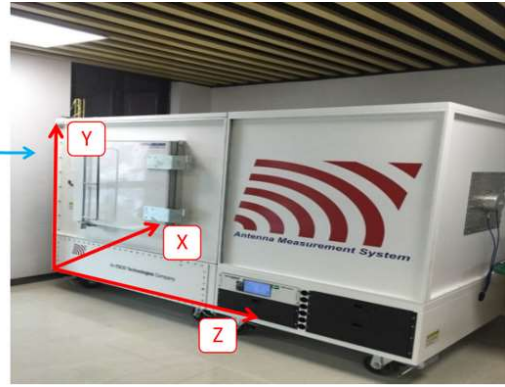
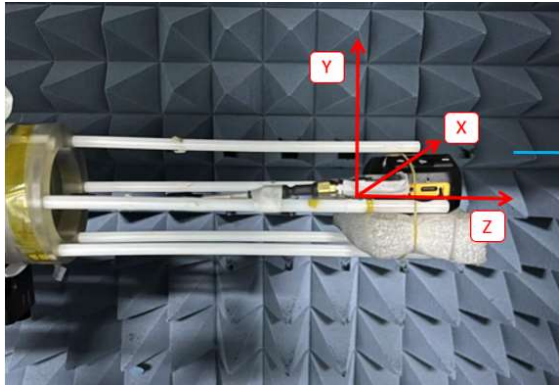
位号	匹配值
C1	NA
L1	3nH
C2	1.8pF

3.3 Antenna Test Settings:

THIS DRAWINGS AND SPECIFICATIONS ARE THE PROPERTY OF SUNITEC ENTERPRISE CO.,LTD.AND SHALL NOT BE REPRODUCED OR USED AS THE BASIS FOR THE MANUFACTURE OR SALE OF APPARATUS OR DEVICES WITHOUT PERMISSION

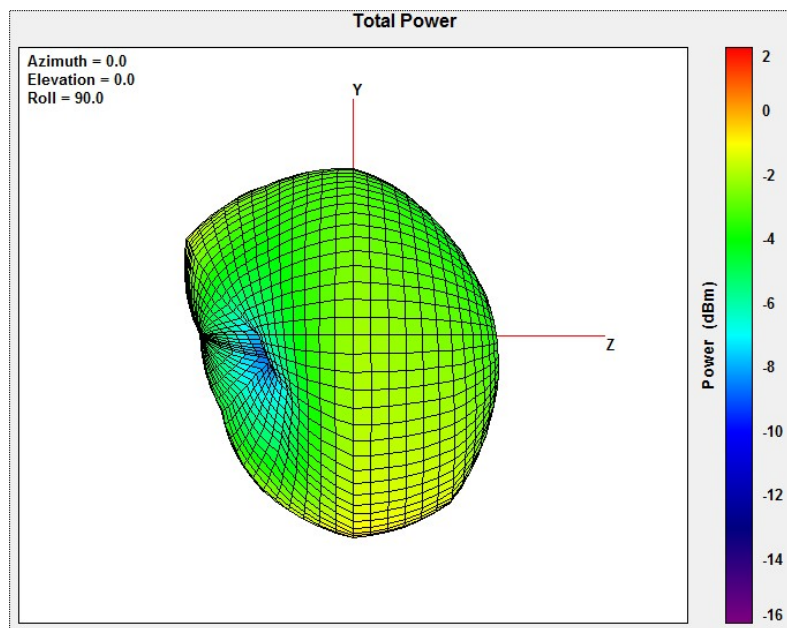


深圳市丰禾原电子科技有限公司
SUNITEC ENTERPRISE CO.,LTD.

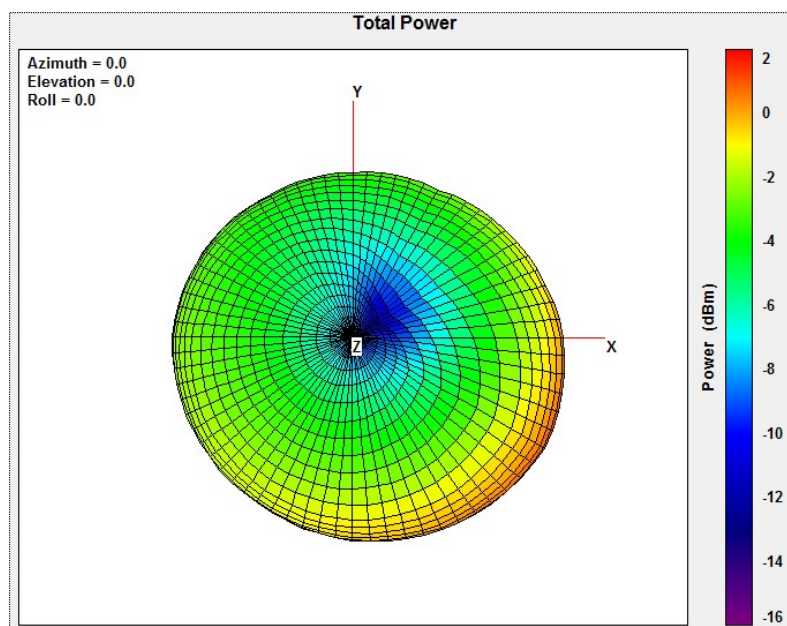


3.4 3D Radiation Pattern :

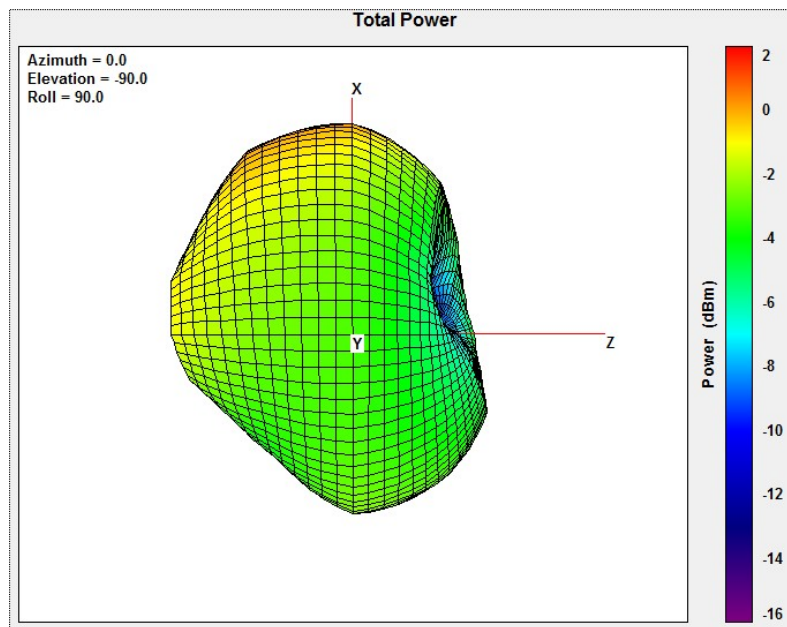
2441MHz--YZ



2441MHz--YX



2441MHz--XZ



3.5 Electrical Characteristics:

Antenna Model Name	chip antenna
Working Frequency Range	2450+/-50MHz
Impedance	50Ω
Max Efficiency(%)	57.7%@2450MHz
Max peak Gain(dBi)	1.36dBi@2450MHz

Frequency(MHz)	Efficiency (%)	Peak Gain (dBi)
2400	56.4	0.84
2440	57.6	1.36
2480	55.1	1.15