

Before installation

Thank you for using ORINDA wireless router!

This manual will take windows 2000/xp as example to guide you how to share Internet through our router. This manual only introduces the most basic setting; please visit our website to download more detailed illustration for your more advanced requirement.

Note: There maybe something different between the picture in the manual and material objects, please act according the practices.

Hardware unit

1. Package Contents

- Wireless router *1
- Power adapter *1
- 1.5m cable *1
- Manual *1
- Warranty card *1
- Certification *1

2. Environment for installation

Orinda wireless router can be put at any convenient station in your office or home, however, in order to ensure the router work long time, we advice you use it in following environment:

- I. Keep away from the heat, and maintain airy
- II. Lay the router on flat surface
- III. Set it up in dry and no-dust environment

Note: please use it in rated power to ensure the device work perfect.

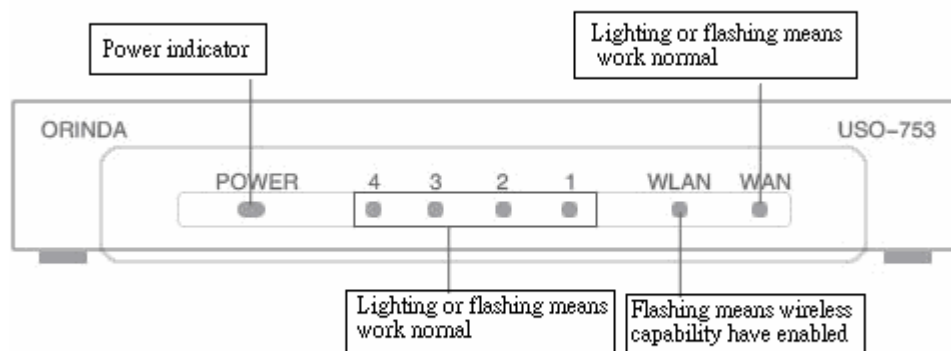
3. Specification

Work temperature: 0~40℃

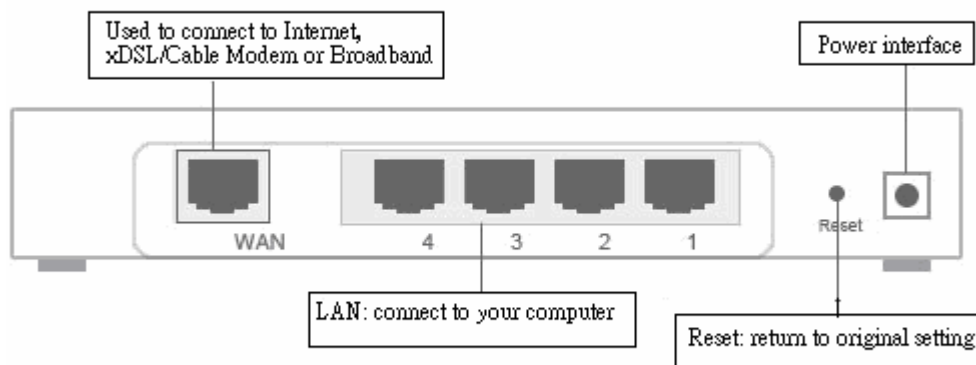
Work humidity: 5%~90%RH noncondensable

Power supply: DC 9V~50Hz 0.8A, AC 110V~240V

4. Status indicators



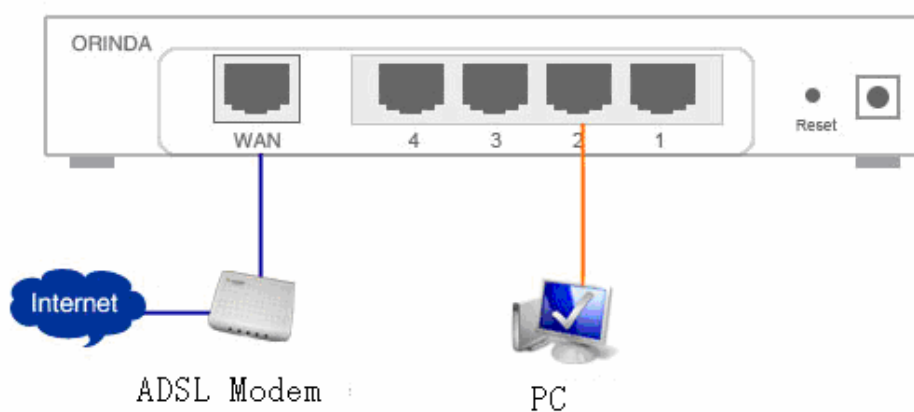
5. Control key and interface



Mounting procedure

Cable installation

1. Hardware connection

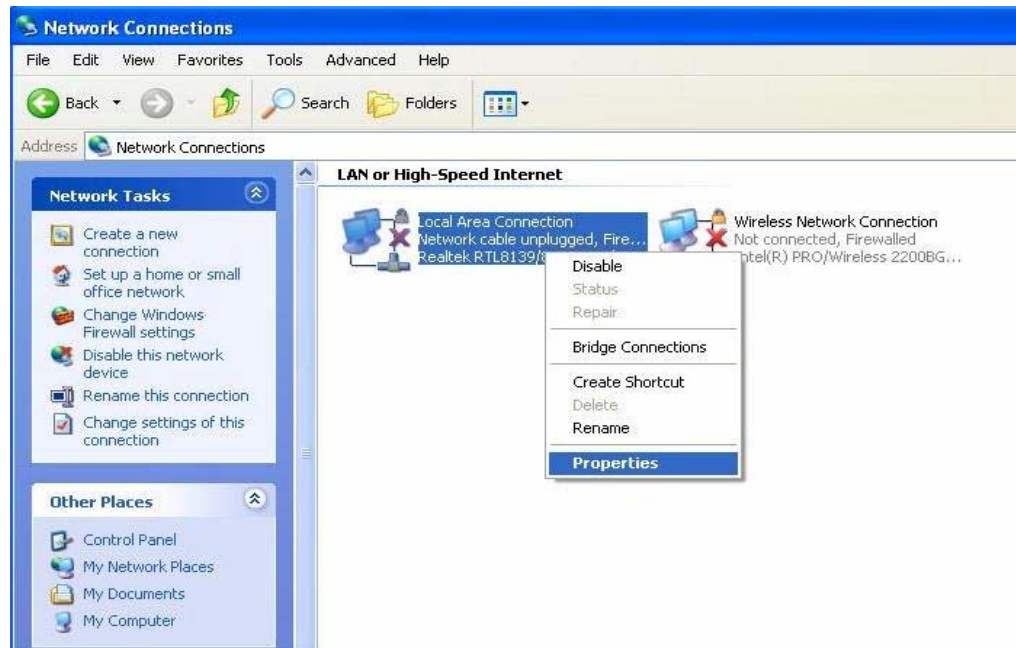


2. Set up your computer

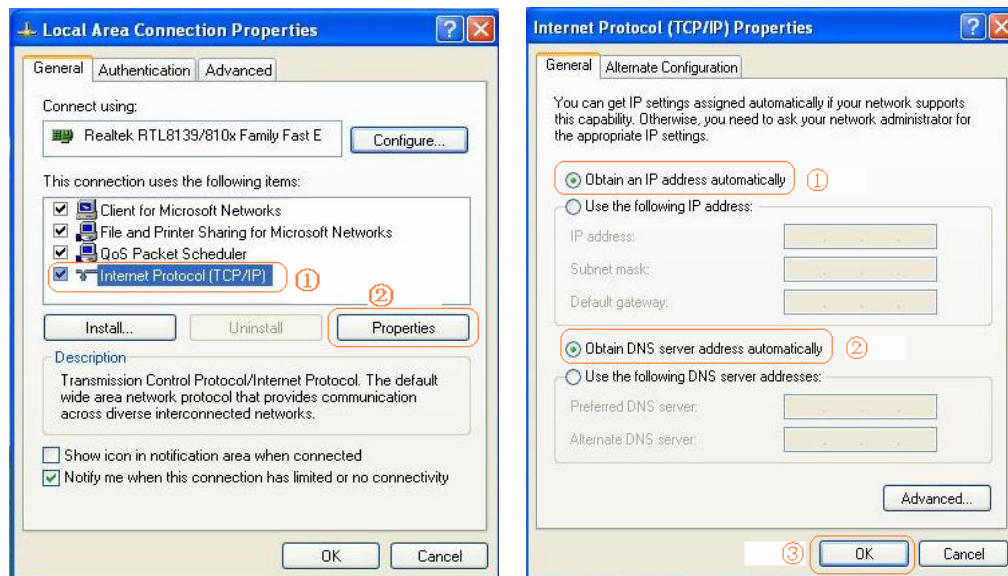
We advise you set local IP address as automatically accessible:

- I. Find out local connection form “control panel→network and Internet connection

→network connection", then right-click and choose "attribute", as the following picture:



- II. In the following dialogue box, select "Internet protocol (TCP / IP)", then select "Properties", as shown left:

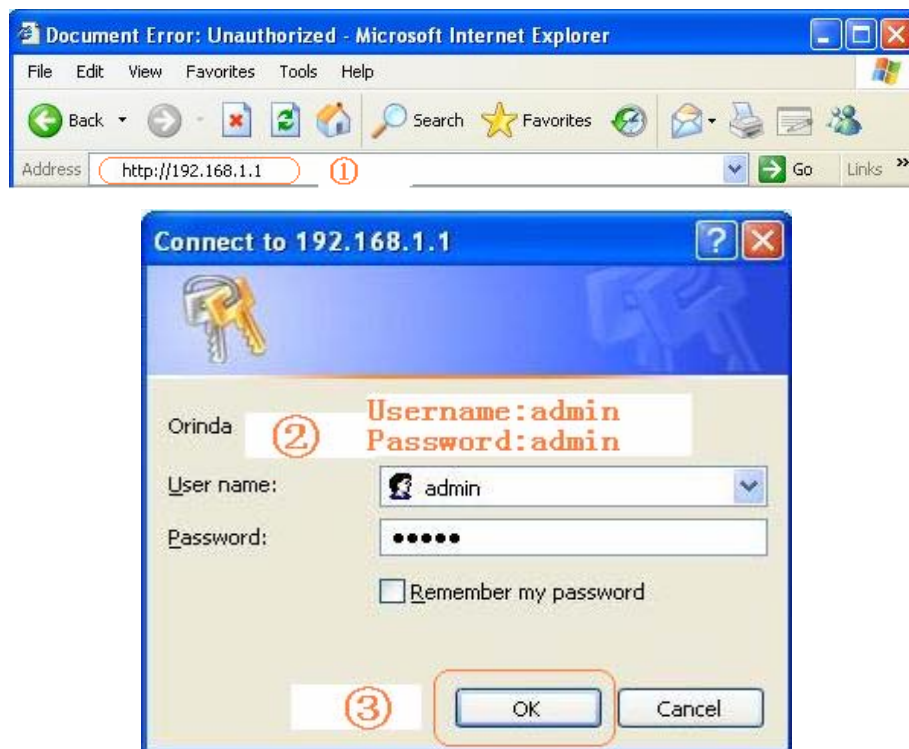


- III. In the new pop-up dialogue box, select "automatic control access to IP address" and "automatic access to the DNS server address," then lick "OK." As indicated above (the right picture)
- IV. Click "OK", you ill return to the previous dialogue, left-click "OK" button

3. Landing web management interface

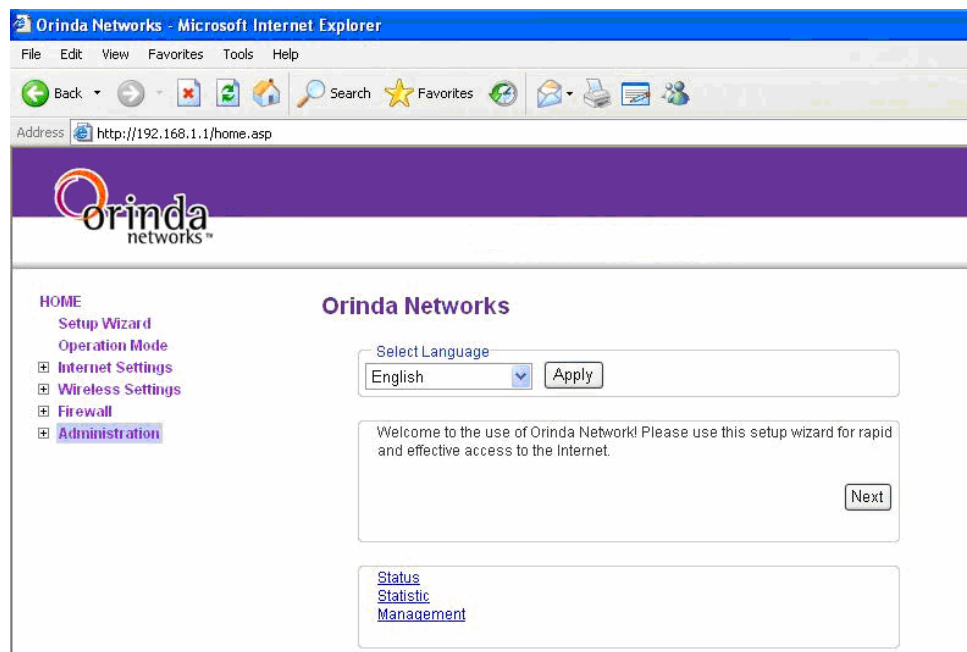
- I. Open a new IE browser, and input “http://192.168.1.1” in the address bar and then press “enter”. Then you will see a new pop-up dialog box, input the default user

name and password (user name: admin, password: admin). Left-click "OK"



II. Set up Internet access

1) After click "OK" you will enter the product's settings interface. You will see a welcome page, and you can choose Simplified Chinese, Traditional Chinese, and English according your language habits.



2) In the main interface, click "Next" and then you will enter a new page, you need choose the type of Internet access based on your network statues here.

There are three ways to connect to the Internet:

- PPPoE

The product set PPPoE as default way

Note: Username and password which are supplied by your network service providers (such as telecommunications, CRC and cable modem) is not the router's login and password.

Wide Area Network (WAN) Settings

You may choose different connection type suitable for your environment. Besides, you may also configure parameters according to the selected connection type.

WAN Connection Type: PPPoE (ADSL)

PPPoE Mode

User Name:

Password:

Verify Password:

Next Cancel

- Ethernet: automatically obtain IP address (Dynamic IP) from network service providers .Here doesn't require any settings, just click "OK".
- Ethernet : network service provide a fixed IP (static IP)

3) Confirm the correct username and password, then click "Next"

4) Then the wireless settings page jump out, click "completion", as the following picture

Wireless set

You can modify the wireless network name, security and principles.

Network Name (SSID)

Network Name (SSID):

Security Policy --

Security Mode: Disable

Complete Cancel

4.complete the setting

Complete set!

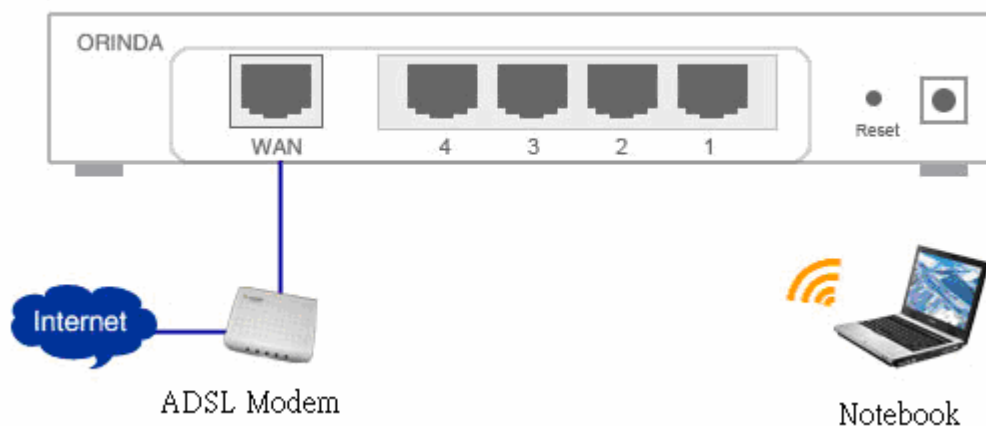
Tips for PPPoE user: If you can not use the Internet ,please make sure that the user name and password are correct.

5.Test your Internet connection

Now the router's basic settings have been completed. If your router WAN have successfully obtained the corresponding IP address, DNS service, and other information, then congratulate you, you can now open a new IE browser to scan your favorite pages. If you do not see the relevant parameters, please read the "Frequently Asked Questions" in this document.

Wireless installation

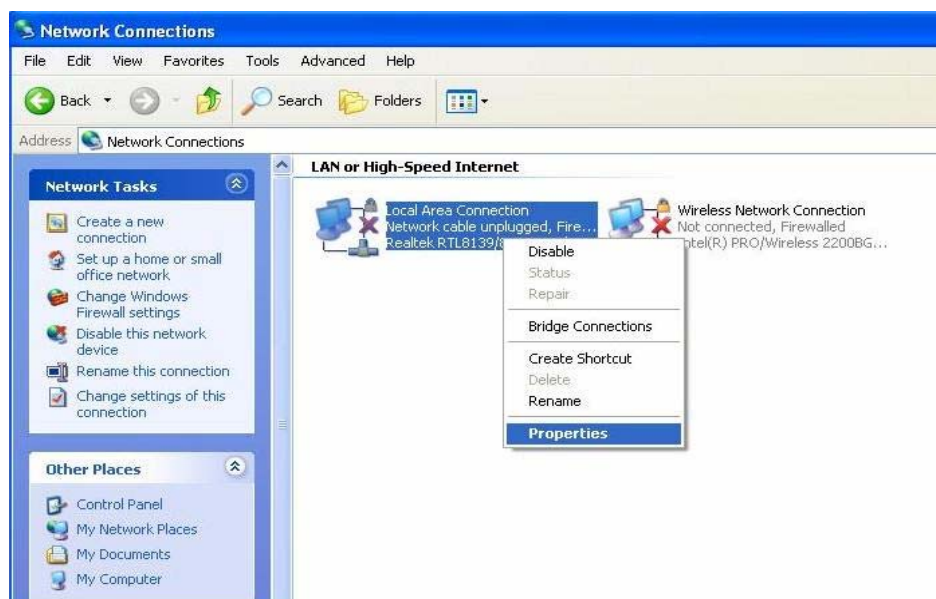
1. Hardware connection



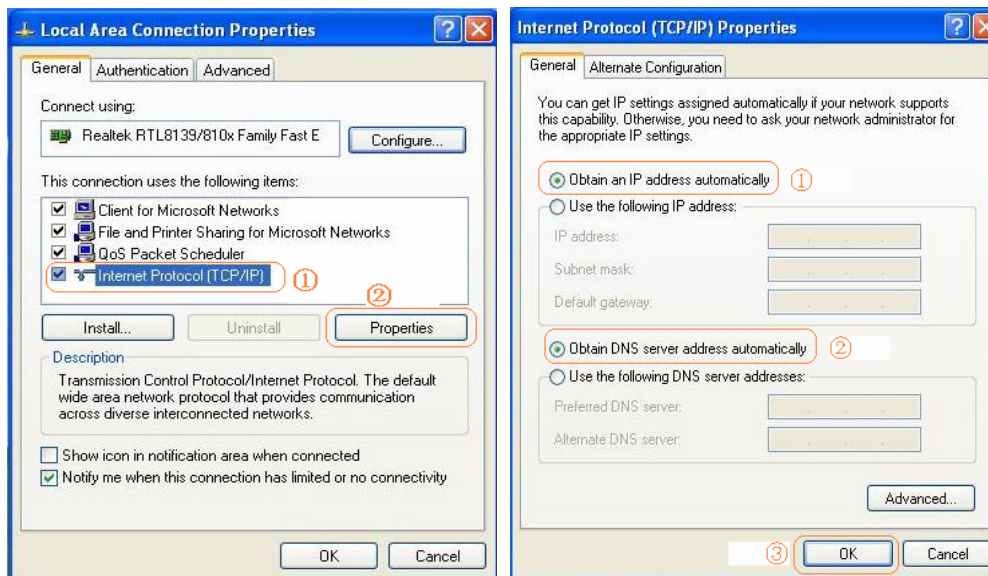
2. Set up your computer

We advise you set local P address as automatically accessible:

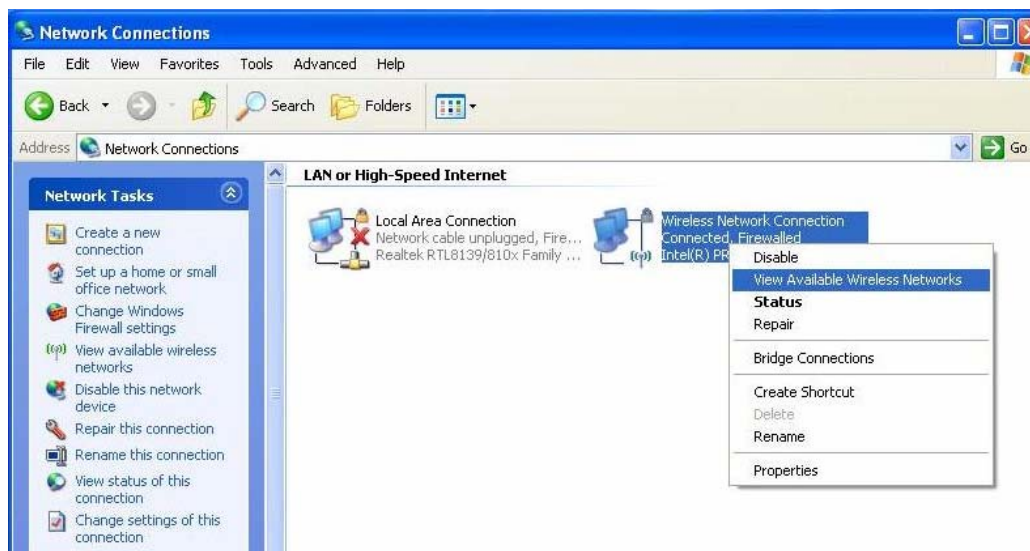
- I. Find out local connection form "control panel→network and Internet connection →network connection", then right-click and choose "attribute", as the following picture:



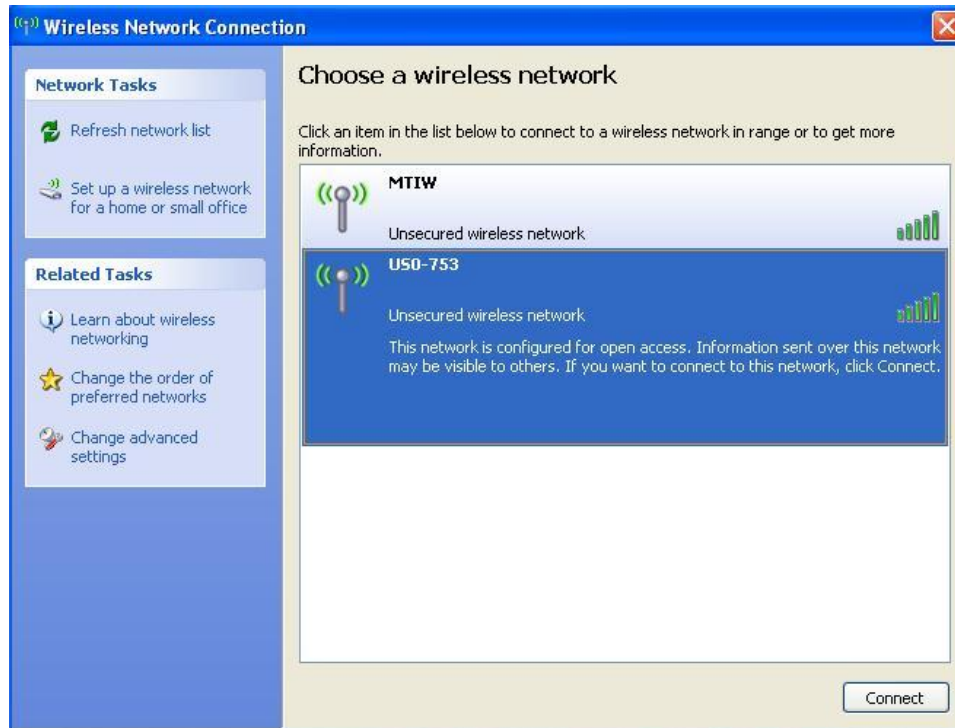
- II. In the following dialogue box, select "Internet protocol (TCP / IP)", then select "Properties", as shown left:



- III. In the new pop-up dialogue box, select "automatic control access to IP address" and "automatic access to the DNS server address," then lick "OK." As indicated above (the right picture)
- IV. Click "OK", you ill return to the previous dialogue, left-click "OK" button
- V. Search for wireless network: find out wireless network connections from the "control panel → network connection", right-click "View available wireless connectivity", as the following picture:

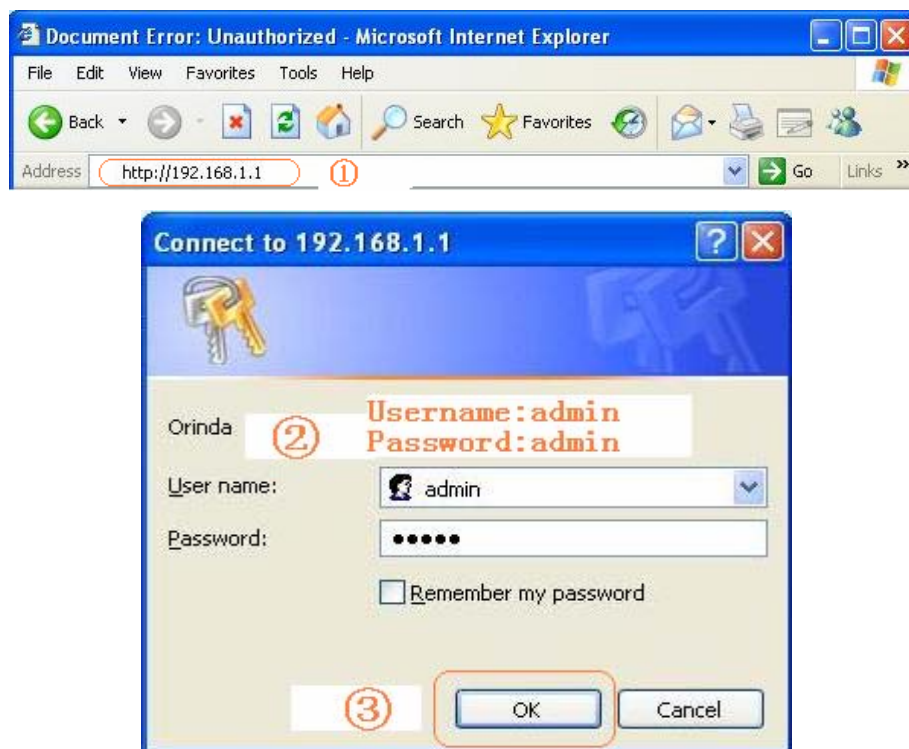


- VI. Choose the wireless network name that you have searched: US0-753, as shown, left Double-click the link::



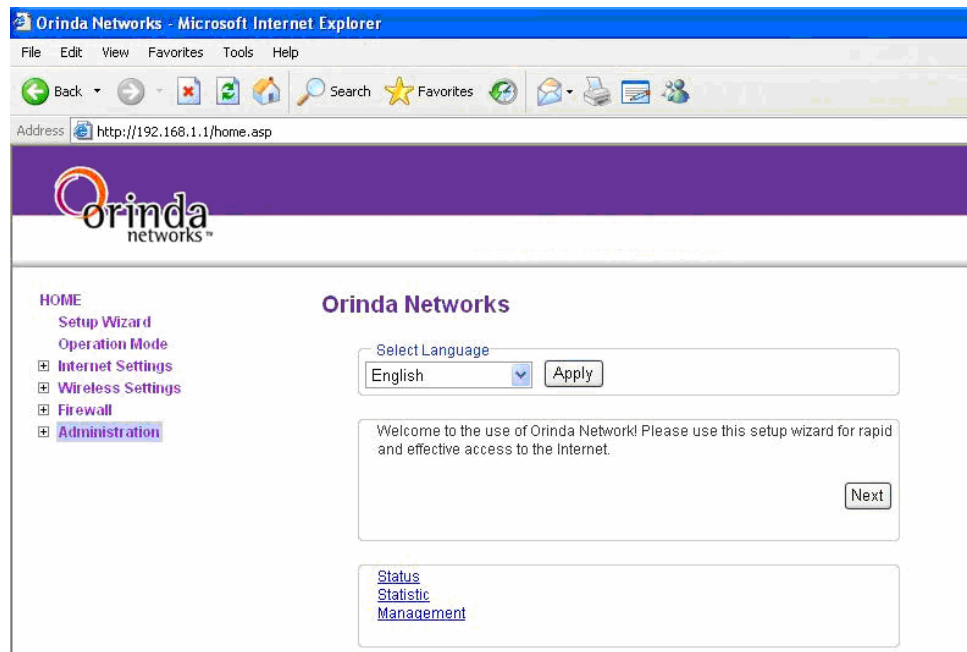
3. Landing web management interface

- I. Open a new IE browser, and input "http://192.168.1.1" in the address bar and then press "enter". Then you will see a new pop-up dialog box, input the default user name and password (user name: admin, password: admin). Left-click "OK"



- II. Set up Internet access

1) After click “OK” you will enter the product’s settings interface. You will see a welcome page, and you can choose Simplified Chinese, Traditional Chinese, and English according your language habits.



2) In the main interface, click "Next" and then you will enter a new page, you need choose the type of Internet access based on your network statues here.

There are three ways to connect to the Internet:

- **PPPoE**

The product set PPPoE as default way

Note: Username and password which are supplied by your network service providers (such as telecommunications, CRC and cable modem) is not the router’s login and password.

- Ethernet: automatically obtain IP address (Dynamic IP) from network service providers .Here doesn't require any settings, just click "OK".
- Ethernet : network service provide a fixed IP (static IP)

3) Confirm the correct username and password, then click "Next"

4) Then the wireless settings page jump out, click "completion", as the following picture

Wireless set

You can modify the wireless network name, security and principles.

Network Name(SSID)

Network Name(SSID)

Security Policy --

Security Mode

4. Complete the setting

Complete set!

Tips for PPPOE user: If you can not use the Internet ,please make sure that the user name and password are correct.

5.Test your Internet connection

Now the router's basic settings have been completed. If your router WAN have successfully obtained the corresponding IP address, DNS service, and other information, then congratulate you, you can now open a new IE browser to scan your favorite pages. If you do not see the relevant parameters, please read the "Frequently Asked Questions" in this document.

Federal Communication Commission Interference Statement

This equipment has been tested and found to comply with the limits for a Class B digital device, pursuant to Part 15 of the FCC Rules. These limits are designed to provide reasonable protection against harmful interference in a residential installation. This equipment generates uses and can radiate radio frequency energy and, if not installed and used in accordance with the instructions, may cause harmful interference to radio communications. However, there is no guarantee that interference will not occur in a particular installation. If this equipment does cause harmful interference to radio or television reception, which can be determined by turning the equipment off and on, the user is encouraged to try to correct the interference by one of the following measures:

- Reorient or relocate the receiving antenna.
- Increase the separation between the equipment and receiver.
- Connect the equipment into an outlet on a circuit different from that to which the receiver is connected.
- Consult the dealer or an experienced radio/TV technician for help.

This device complies with Part 15 of the FCC Rules. Operation is subject to the following two conditions: (1) This device may not cause harmful interference, and (2) this device must accept any interference received, including interference that may cause undesired operation.

FCC Caution: Any changes or modifications not expressly approved by the party responsible for compliance could void the user's authority to operate this equipment.

Industry Canada

Operation is subject to the following two conditions: (1) this device may not cause interference, and (2) this device must accept any interference, including interference that may cause undesired operation of the device.

RF EXPOSURE

To comply with FCC and Industry Canada RF radiation exposure requirements, the antenna(s) used for this transmitter must be installed such that a minimum

separation distance of 20cm is maintained between the radiator (antenna) & user's/nearby people's body at all times and must not be co-located or operating in conjunction with any other antenna or transmitter.