

AirCinema

**1080P streaming from
PC / Tablet / SmartPhone**



User's Manual

FEDERAL COMMUNICATIONS COMMISSION

This device complies with Part 15 of the FCC Rules Operation is subject to the following two conditions: this device may not cause harmful interference, and (2) this device must accept any interference received, including interference that may cause undesired operation.

This equipment has been tested and found to comply with the limits for a Class B Digital Device, pursuant to part 15 of the FCC Rules. These limits are designed to provide reasonable protection against harmful interference in a residential installation. This equipment generates, uses and can radiated radio frequency energy and, if not installed and used in accordance with the instruction, may cause harmful interference to radio communication. However, there is no grantee that interference will not occur in a particular installation. If this equipment does cause harmful interference to radio or television reception, which can be determined by tuning the equipment off and on, the user is encouraged to try to correct the interference by one or more of the following measures:

- Reorient or relocate the receiving antenna.
- Increase the separation between the equipment and receiver.
- Connect the equipment into an outlet on a circuit different from that to which the receiver is connected.
- Consult the dealer or an experienced radio/TV technician for help.

Notice: Changes or modifications not expressly approved by the party responsible for compliance could void the user's authority to operate the equipment.

RF Exposure: A distance of 20cm shall be maintained between the antenna and users, and the transmitter may not be co-located with any other transmitter or antenna.

CE DECLARATION

This device complies with CE . These limits are designed to provide reasonable protection against harmful interface in a residential installation.

Printed in TAIWAN R.O.C No. 20120903

All contents are subject to change without notice.

All trademarks are the property of their respective owner.

CHAPTER 1. OVERVIEW	1
1.1 Introduction	1
1.2 Features	1
1.3 Specifications	1
1.4 System Requirements	2
CHAPTER 2. OUTLINE DESCRIPTION	3
CHAPTER 3. HARDWARE INSTALLATION	4
CHAPTER 4. CONNECTION SETUP	5
1. Connect your device to AirCinema	5
2. Use web browser to...	6
Remote control	6
3. Initial Setup	7
Language	7
TV System	7
Wireless LAN Setup	8
Virtual AP Setup	8
CHAPTER 5. AirCinema SETUP	9
5.1 Network	9
Device Name	9
Wireless LAN Setup	10
- Virtual AP Only Mode	10
- Virtual AP Bridge Mode	11
Virtual AP Setup	13
5.2 Audio	13
Night Mode	13
HDMI Output	14
Surround Sound	14
Lip Sync	15
5.3 Video	15
Aspect Ratio	16
TV System	16
Scale Video Output to 90%	16
1080P 24Hz	17
5.4 System	17
Language	17
Factory Default	18
Version Info	18
USB Upgrade	19
CHAPTER 6. AirFun SOFTWARE	20
6.1 AirFun Installation	20
6.2 AirFun Operation	20
CHAPTER 7. TROUBLESHOOTING	24

1.1 Introduction

The AirCinema delivers Full HD resolution (HDMI out) or NTSC/PAL (Composite video out) from computer/Tablet/Smart-phone wirelessly to your home Entertainment center; it brings video and audio to the big size TV/LCD Monitor/Projector wirelessly via standard Wi-Fi technology. Providing Wi-Fi transmission up to 180 feet (open site). You can now enjoy Multi-Media contents on big screen without cable limitation and hassling.

1.2 Features

- Support Video/Audio/Image DLNA WiFi transmission from Computer/Tablet/Smart phone to TV
- Support either HDMI or Composite Audio/Video output
- Delivers smooth video output upto 1080P(HDMI out) by 30fps
- Special support NTSC/PAL video output (Composite out) for traditional TV
- Build-in DLNA software in device memory (Android/Windows version only), easy to download from device
- Build-in Wi-Fi antenna
- Long distance wireless transmission up to 180 feet (open site)
- Complies with IEEE 802.11 b/g/n
- Easy firmware upgrade
- Play photo with music function support
- Wide input voltage (DC 5V ~ 12V) support for extensively application
- Support Virtual AP Bridge (bridge to wireless router)
- Back to default reset button support

1.3 Specifications

- **Video:**
 - HDMI output :
Full HD 1080P (1920x1080) output.
(Supported : 480P/ 576P/ 720P/ 1080i/ 1080P @ 24Hz or 50Hz and 60Hz)
 - Composite video output :
Yellow RCA female port. (Support : NTSC/PAL system)
- **Audio:**
 - Output interface: Digital - HDMI,
 Analog - Red/White RCA female port.
 - Night Mode Function
 - Support HDMI LPCM or RAW data output
- **Image:**
 - Formats Supported : JPG/JPEG, BMP, PNG, GIF

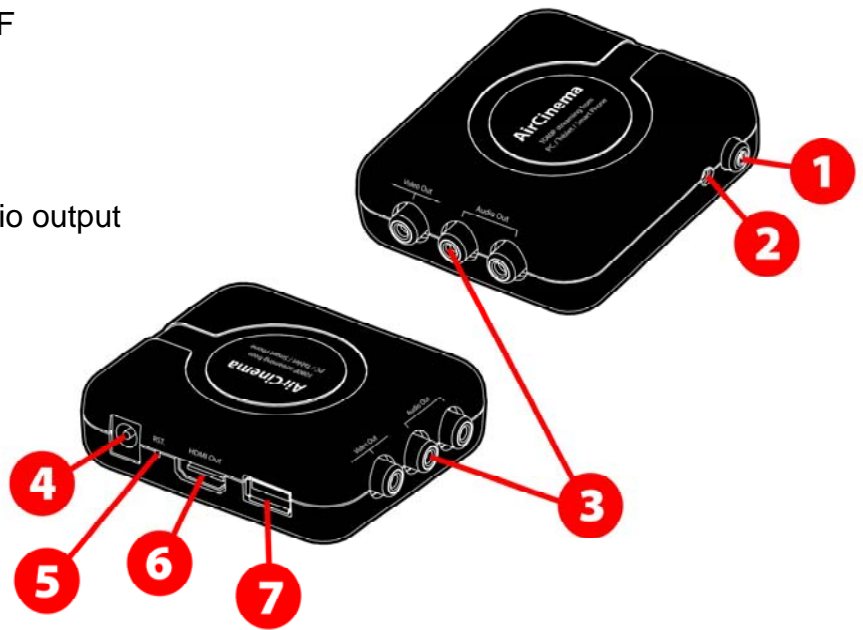
- **Wirelessly :**
 - Frequency : 2.4 GHz ISM Bands (2.412-2.472 GHz)
 - Modulation : BPSK/ QPSK/ 16-QAM/ 64-QAM
 - Compliant with IEEE802.11n Draft 3.0 standard.
 - High speed wireless connection up to 150Mbps.
 - Data security : 64/128 bit WEP, WPA, and WPA2
 - Output Power :
 - < 17 dBm @ 802.11b
 - < 14 dBm @ 802.11g
 - < 14 dBm @ 802.11n
 - Receive Sensitivity :
 - 11Mbps -80dBm@8%
 - 54Mbps -70dBm@10%
 - 130Mbps -64dBm@10%
- **USB:** For Firmware upgrade
- **Power consumption:** 5V DC, 470mA / 12V DC, 240mA
- **Dimensions:** 81.5 x 71.5 x 23.5 (mm)
- **Antenna:** Build-in Omni directional Antenna.

1.4 System Requirements

- Digital Media Server
(DMS; e.x. include PCs and network-attached storage (NAS) devices...etc.)
- Digital Media Controller
(DMC; e.x. include Internet tablets and Wi-Fi enabled digital cameras...etc.)
- Mobile Digital Media Server
(M-DMS; e.x. include mobile phones and portable music players...etc.)
- Mobile Digital Media Controller
(M-DMC; e.x. include personal digital assistants (PDAs) and smart phones...etc.)
- HDMI cable or RCA (Yellow/Red/White) cable

2. Outline Description

1. **Power Button** : Power ON / OFF
2. **Power LED** : Power indicator.
3. **RCA**: Composite Video and Audio output

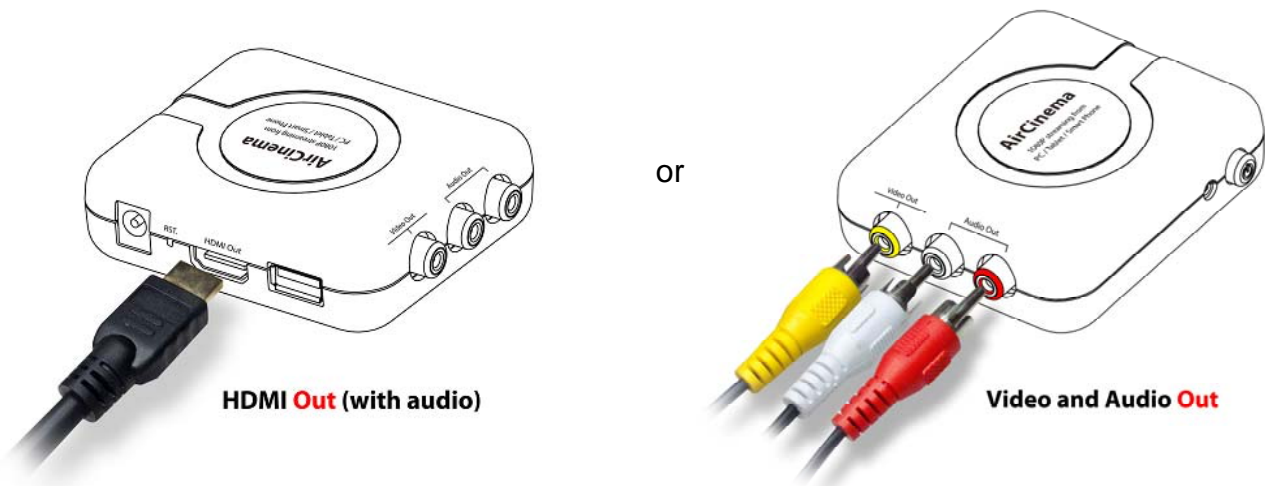


4. **DC5V** : Power in.
5. **RST.:** Reset AirCinema device to default,
Poke the RST. until device show back to default message and into **Initial Setup** automatically.
6. **HDMI** : HDMI out both video and audio.
7. **USB** : For firmware upgrade using only.

1. Make sure AirCinema was power off.
2. Connect power adapter to (AirCinema device) power jack.



3. Properly connect HDMI or RCA Video and Audio output port (AirCinema device) to input port of TV / Monitor etc...



4. Power on TV / Monitor.
5. Power on AirCinema device.



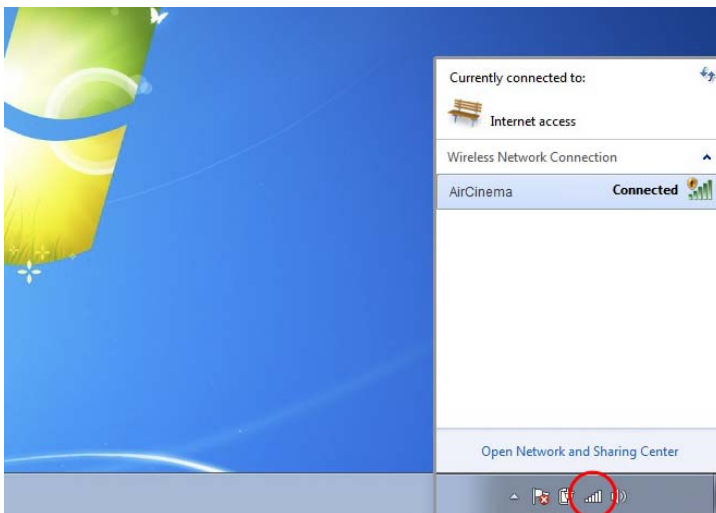
When the first time to use AirCinema, it will show “**Ready to Initial Setup**” screen. Please follow the instructions to setup AirCinema.

1. Connect your device to AirCinema via WiFi



Please turn on your devices (Computer / Smart phone / Tablet PC) Wi-Fi function.

Link your devices (Computer / Smart phone / Tablet PC) Wi-Fi to the SSID "AirCinema" device.



When your devices connect with AirCinema successfully, it will show green check mark.

2. Use web browser to open “<http://192.168.59.254/remote>” for access of virtual remote control

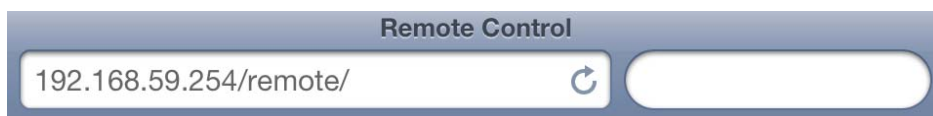
Note: <http://192.168.59.254/remote>

the IP address depends on your AirCinema device.

Please follow the IP address show on the screen to access of virtual remote control .




Open the devices (Computer / Smart phone / Tablet PC) website page and key in “Remote Control” IP in web browser.



Connect “remote control” and the remote control panel will be showed on the devices (Computer / Smart phone / Tablet PC) screen. Select “OK” to next step (**Initial Setup**)

Remote control

1.  Setup Go to **AirCinema** setup

2.  Use Up / Down / Left / Right to move the point “OK” to Confirm

3.  Return Return page

4.  Info AirFun download page / Manual link page

5.  Wifi Setup Fast replace existing connection.



3. Initial Setup

Set

Language

TV System

Wireless LAN Setup

Virtual AP Setup

When finish **Initial Setup**

Please select **“Save Change”**

Click **“OK”** to confirm.



Language

You can choose language
of the AirCinema

Click **“OK”** to confirm.



TV System

To set video display resolution,
NTSC / PAL or other resolution
to suit your TV system.

Click **“OK”** to confirm.



Wireless LAN Setup

Please see

5.1 Network / Wireless LAN Setup / Virtual AP Only Mode / Infrastructure (AP) Mode



Virtual AP Setup

To set AirCinema

Wireless Security Password Region

When finish **Virtual AP setup**
Please select **"Save Change"**
Click **"OK"** to confirm.



When finish **Initial Setup**, Please select **"Save Change"** Click **"OK"** to confirm.

5. Setup **AirCinema Setup**

Network / Audio / Video / System



5.1 Network

Click “OK” to enter Network setup option.



Device Name

You can change the AirCinema Device name

Move the point to Key in letters you need.



Wireless LAN Setup

To set play Video/Audio from your devices with or without internet.

Click “OK” to enter Wireless LAN Setup.



- Virtual AP Only Mode

It allow you play Video/Audio from your devices (Computer / Smart phone / Tablet PC) without internet.

- Virtual AP Bridge (bridge to wireless router) Mode

If you have a Router and connect internet, It allow you play Video/Audio from your devices (Computer / Smart phone / Tablet PC) and you can still surfing on internet.

- Virtual AP Only Mode



Click “OK” to connect



- Virtual AP Bridge (bridge to wireless router) Mode

Note: We suggest enable router UPnP service, when you use Infrastructure (AP) Mode, or it may cause some problems.



Click “OK” to enter AP router connection setup option.



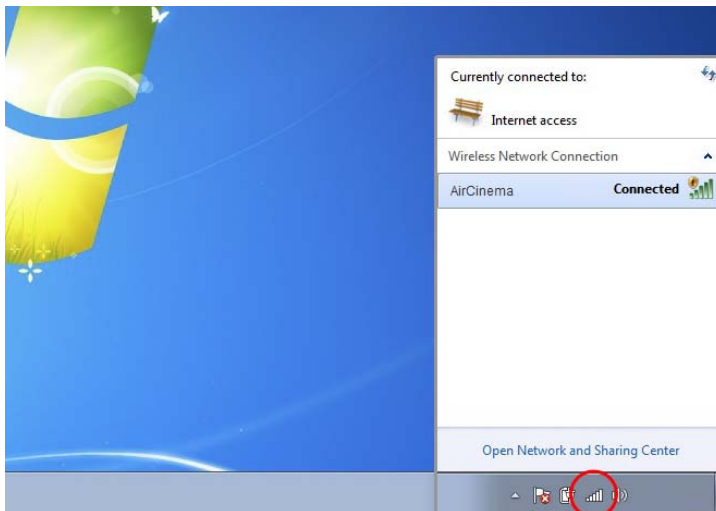
There are 3 AP routers can save.

Click “OK” to select the AP you want to connect.

AirCinema will search the AP router automatically.



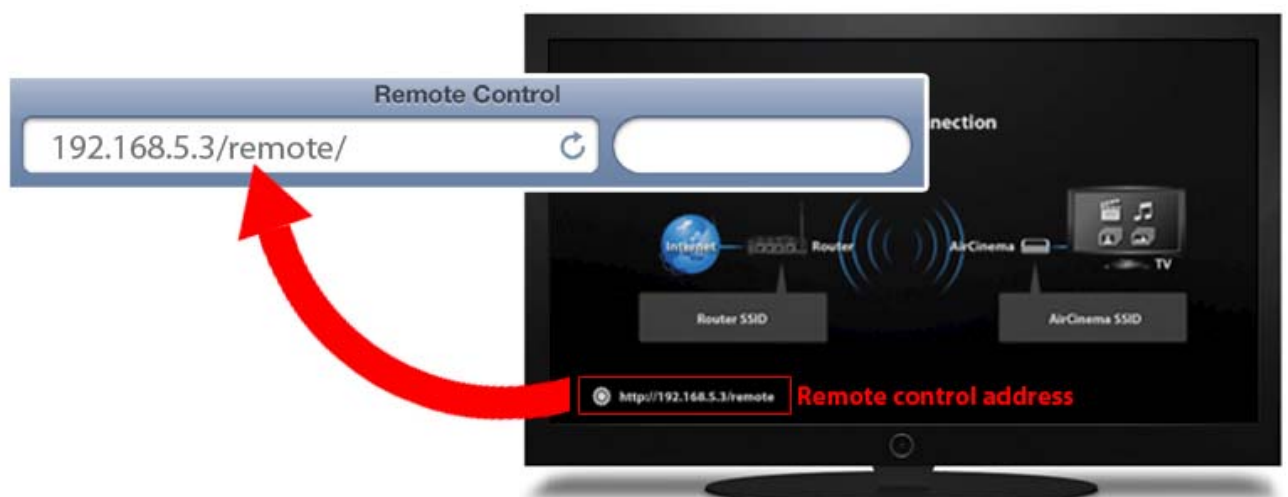
After the AirCinema connect AP router successfully. **AirCinema** connection status screen will showed on the TV / Monitor etc...



Re-Link your devices
(Computer / Smart phone / Tablet PC)
Wi-Fi to the “device SSID” of the
AirCinema device.

- The default of “device SSID” is
“**AirCinema**”.

Open the devices (Computer / Smart phone / Tablet PC) website page and
key in “remote control address” in web browser.



Connect “remote control” and the remote control panel will be showed on the devices
(Computer / Smart phone / Tablet PC) screen.

Virtual AP Setup

To set AirCinema
Wireless Security
Password
Region

When finish **Virtual AP Setup**
 Please select **“Save Change”**
 Click **“OK”** to confirm.



5.2 Audio

Click **“OK”** to enter Audio
 setup option.



Night Mode

Enter the Night Mode
 The function will let music/Video
 Treble and Bass level lower.



Click **“OK”** to confirm.

HDMI Output

HDMI LPCM -

General, Sound decode by AirCinema

HDMI RAW -

Sound decode by your stereo sound device. (AMP)

HDMI Auto -

Auto detected by AirCinema.

Click "OK" to confirm.



Surround Sound

Auto -

Auto detected by AirCinema.

5.1 CH -

If you use 5.1 CH stereo system
You can select 5.1 CH Surround sound

* Dolby 5.1CH format

Please set sound decode
to **HDMI RAW**

HD Audio -

General, High Definition audio

Click "OK" to confirm.



Lip Sync

If the Video you are playing, and the Audio are not showed at the same time, you can use this function to adjust audio.

Lip Sync (Auto)

Auto detected by AirCinema.

Lip Sync (Manual)

Adjust audio manually.
Use Up/Down point to set Lip Sync value.



After setting, select "Yes" to confirm.

5.3 Video

Click "OK" to enter Video setup option.



Aspect Ratio

To scale video size

Pan Scan 4:3

Letter Box 4:3

16:9

16:10

Click “OK” to confirm.



TV System

To set video display resolution,
NTSC / PAL or other resolution
to suit your TV system.

Click “OK” to confirm.



Scale Video Output to 90%

If there have a situation
Of over scan when playing
video.

You can try to set “ Scale
Video Output to 90%” **On**
to improve this situation.

Click “OK” to confirm.



1080P 24Hz

Movie Mode

If the Video and the Monitor/TV can support 1080P 24Hz (Ex. Home Theater) You can select this mode to get more better effect.

Click “OK” to confirm.



5.4 System

Click “OK” to enter System setup option.



Language

You can choose language of the AirCinema

Click “OK” to confirm.



Factory Default

Erase setting and apply default
Immediately, “Yes” to confirm.



Version Info

Show the AirCinema
Version Info



USB Upgrade

- Please follow the Firmware Update steps carefully, or else you may damage the device.
- If you are going to upgrade the firmware of AirCinema, please prepare the suitable firmware Update file and one USB flash drive.
- Please use USB flash drive, it does not support USB HDD

1. Please empty USB flash drive and format to FAT32
2. Save the Firmware Update file in the root folder of the USB flash drive.
(the Firmware Update file named **"Install"**)
3. Insert the USB drive into AirCinema USB port.



USB drive Insert

Upgrade by setting page

Click "OK" to start upgrade AirCinema firmware.



Upgrade by setting page

1. Power off AirCinema.
2. Insert the USB drive into AirCinema USB port.
3. Poke the RST. hole and power on AirCinema until the TV / Monitor screen showing the USB starting upgrade.



Poke RST.

To play Video/Audio by device, you need DLNA software


For PC : Download **AirFun “For PC”** in AirFun download page or download DLNA software on internet.

For Android Smart device: Download **AirFun “For Android”** in AirFun download page
or download DLNA software on Google Play.

For Apple Smart device: Download DLNA software on App Store.

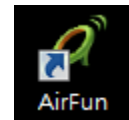
Here, use **AirFun** in Windows7 for example

6. AirFun

Click  to enter AirFun download page
You can select **AirFun “For PC”** or **“For Android”** to download.

6.1 AirFun Installation

1. After download **AirFun “For PC”** success, you can find AirFun Installer on the desktop.
 2. Double left click **“AirFun Installer”** to install **AirFun Software**.
 3. Follow instructions to finish installation.
 4. After **AirFun Software** install completed, you can find **AirFun** shortcut on the desktop.
 5. Double left click **AirFun** shortcut icon.
-



6.2 AirFun Operation

Starting: After double left click **AirFun** shortcut icon, you can see **AirFun** window as below



1. Go to the **Remote Control**



2. Drop the Photo/Music to Photo/Music Playback.

AirFun will change to Photo/Music window as below

Music Playback window

1. Drop another music to “**Play**”

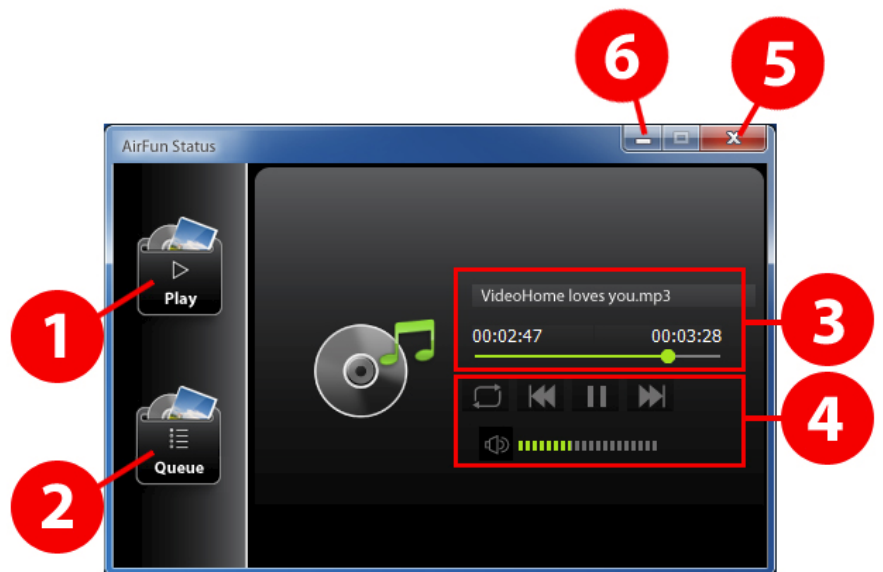
AirFun will play the music you are dropped at once.

2. Drop music to “**Queue**”

The music you are dropped will play by queue.

3. Music status AirFun playing.

4. Music controller.



Repeat All/Off



Previous



Pause



Next



Volume

5. Close Music Playback, back to AirFun window.

6. Minimum window.

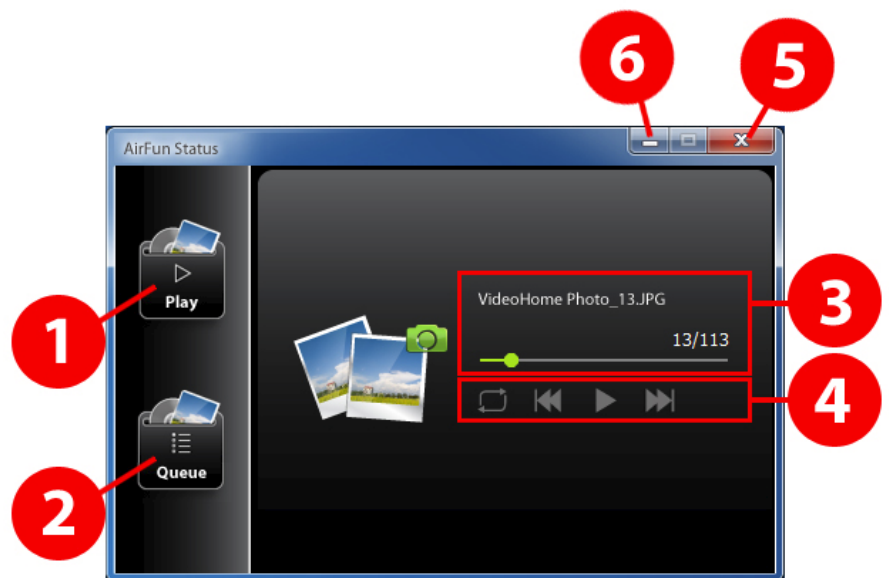
Photo Playback window

1. Drop another photo to **“Play”**
AirFun will play the photo you are dropped at once.

2. Drop photo to **“Queue”**
The photo you are dropped will play by queue.

3. Photo status AirFun playing.

4. Photo controller.



Repeat All/Off



Previous



Pause



Next

5. Close Photo Playback, back to AirFun window.

6. Minimum window.

Music/Photo Playback window

Drop the Photo and Music to Photo/Music Playback.
Photo and Music will play at the same time.



3. Drop the Video to Video Playback.

AirFun will change to Video window as below

Video Playback window

1. Drop another video to “**Play**”

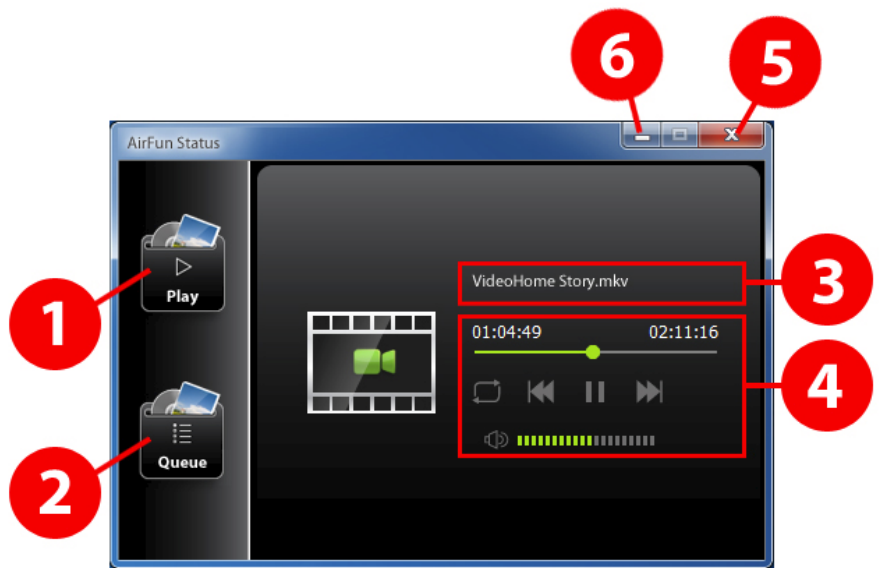
AirFun will play the video you are dropped at once.

2. Drop video to “**Queue**”

The video you are dropped will play by queue.

3. Video status AirFun playing.

4. Video controller.



Video playing slider bar



Repeat All/Off



Previous



Pause



Next



Volume

5. Close Video Playback, back to AirFun window.

6. Minimum window.

Q1. If there is something wrong with AirCinema not working properly.

A1. Power Off AirCinema for a while, then Power On.

Q2. If the wrong settings cause AirCinema need to reset AP routers save or back to default.

A2. Poke the RST. until device show back to default message and into **Initial Setup** automatically.



Q3. When should I use the 1080P 24Hz option?

- A3. 1) This setting is only effect when use HDMI output.
 2) The TV or monitor that is being used must support 1080p 24fps video mode.
 3) The media file in use must also support 1080p 24fps video mode
 4) If the movie does not display correctly when this option is selected, then set it to Off.

Q4. When use Dolby 5.1 CH format audio.

Please set sound decode to **HDMI RAW** (5.2 Audio/HDMI out/HDMI RAW)

Q5. How to change NTSC / PAL system if connect to traditional analog TV by composite video?

- A5. 1) If you are the first time to use AirCinema, after connected AirCinema device and power on, It will show "**Ready to Initial Setup**" screen, in **Initial Setup** to set **TV System** option.

See. **CHAPTER 4. CONNECTION SETUP → 3. Initial Setup → TV System**

- 2) Click  on the device remote control, Go into **Video** option to set **TV System**.

See. **CHAPTER 5. AirCinema SETUP → 5.3 Video → TV System**

