

**Rearview Mirror Multimedia
With GPS and Blue-tooth**

User's Manual

Please read this manual carefully
before use this product

Foreword

Welcome to choose our product

-----Rearview Mirror multimedia with GPS and blue-tooth!

1. The User Manual, all rights reserved to our company.
2. Please copy the important data, our company will not take care for it in case any lost.
3. Pictures in the manual for reference only, please execute with the actual object in hand!

Caution:

- 1) Three reasons caused if the GPS can't connect with the satellite signal.
 - a): Please check if built-in navigation antenna works well.
 - b): It's normal to take a while to update the new information, and meanwhile the screen display in blank, take it easy, one moment, signal will come back.
 - C): Please check if the vehicle is running under the bridge, inside the channel or among the big buildings?
Which those area will affect the signal reception.
- 2) Driver should not operate this navigation during the driving, in case of any security problem caused by!!
- 3) Products will be continued updating, the final operation steps may have little changes comparing with this manual, please execute with the actual object in hand.

FCC Caution:

This device complies with Part 15 of the FCC Rules. Operation is subject to the following two conditions:

- (1) this device may not cause harmful interference, and (2) this device must accept any interference received, including interference that may cause undesired operation.

FCC Notes:

The manufacturer is not responsible for and radio or TV interference caused by unauthorized modifications to this equipment. Such modifications could void the user's authority to operate the equipment.

CE Caution:

Hereby, DSUS TECHNOLOGY INTERNATIONAL (HK) LIMITED, declares that this Rearview Mirror Multimedia With GPS and Bluetooth (Intended use/Category: Wideband Data Transmission systems) is in compliance with the essential requirements and other relevant provisions of Directive 1999/5/EC.

	Language	Support Simple and complicate Chinese and English, other language need to be updated.	
	Picture Browser	Support JPG/GIF/BMP AND PNG	
	Multi-media Program	Have multi-media function but can't use all the function at the same time	
Unit Appearance	Button form	Power on/off	Will appear on the unit surface
		Main Menu	
		Blue-tooth hands free receiving	
		Blue-tooth hands free hand up	
		Blue-tooth Pairing	
Power input		DC12V	
Power Consumption		≤5W	
Temperature		Working temperature:0C-60C;Storage temperature: -20C-+60C	

Contents

1. Product Appearance

2. User Knowledge:

- 2.1. How to shut on and off
- 2.2. Function of Indication Lights
- 2.3. Start-up Instruction
- 2.4. GPS Antenna Instruction
- 2.5. Touch Screen Cautions
- 2.6. Using Environment Cautions

3. Operation Instruction

- 3.1. Intelligent GPS
- 3.2. Multi-media function
- 3.3. Blue-tooth function
- 3.4. System Set-up

4. Specification Form

1. Product Appearance



1	Power on/off	Turn on / turn off
2	Return to menu	Return to menu
3	Hands free Receiving	Execute blue-tooth hands free receiving function
4	Hands free Hang-up	Execute blue-tooth hands free hand-up function
5	Blue-tooth Pairing	Execute blue-tooth hands free pairing function
6	Touch - Pen	Click and write on the screen
7	SD card port	Including a SD memory card with map software
8	GPS Receiver	Open the GPS receiver to horizontal position to receive the satellite signal
9	Bracket Installation	Install the bracket which is suitable to original auto structure
10	The Inputs	Power Port and Signal input port
11	Microphone input	Link to microphone

2. User Knowledge

2.1. How to shut on and off

Press *Power on/off Button* in 1 second, the unit will operate automatically, and use the same way to shut off the unit.

2.2. Function of Indication Lights

A) The buttons on the surface will be lighted on when operating the unit.

B) Pairing indication button is twinkling while pairing the blue-tooth and it will keep lighting if pairing successfully.

2.3. Start-up Instruction

During the start-up procedures, all the buttons don't work except the *Power on/off Button*, and it finished when the screen display the main menu.

2.4. GPS Antenna Instruction

This unit can receive the GPS signal well which is coming from the outer space satellite, although these GPS signals sometimes are very weak. But it doesn't mean in any environment, any location can be received well. Users should open the antenna to face the sky, and operate this unit under the area without the big building and barrier surrounding.

P.S.: To avoid the receiving effective, DO NOT stick or put anything upon the antenna!

2.5. Touch Screen Cautions

Touching screen is made by special electric-resistance material, is very sensitive to the temperature, humidity, pressure etc. Therefore, In order to keep the touch screen

Specifications Form

Item	Specifications	Remarks
Operate system	Window CE Net4.2	E.g.: window CE, NET4.X or pocket PC
CPU	Factory and model No	Samsung S3C2440A-400MHZ
RAM	Total RAM Capability	64MB
	Valid RAM Capability	64MB
Memory Card	Support or Not	Yes
	Type	SD/MMC
	Capacities Range	256M/512M/1G/2G
	Route Name	SD MMC/Mobile Navigator/ Mobile Navigator.exe
LCD/monitor	inch/resolution	4 inch/480*272
	Tint	16Bit
Touch Screen	Related agreement	4-line electronic-resistance touch
Voice	Speaker	Built-in 8 ohm/1 W Hi-Fi
GPS	GPS input	Built-in open-up antenna
	GPS port	COM1
	GPS Module	Switzerland-UBLOX -LEA4S or Samsung-sirf III
	Band rate	9600
Blue-tooth	Hands free calling	Support Hands free calling, dialing and called recording
Video	Back Car video	Support switch to back car video automatically
About OS	Audio Player	Support WMA9, MP3 upto 320kbps and WAV
	Video Player	Support WMA9, Divx 5.0,4.0,3.11,Xvid and MPEG2 upto 320*240, WMA... asf, avi format

D) Date and Time Setup

Date and time setup including below:

1) Date setup system

Click Date Setup system and click "Date Button" to enter to adjust the date, you can press or to adjust the year, month and date. See picture below:

2) Time setup system

Click Time Setup system and click "Time Button" to enter to adjust the time you can press or to adjust the hour, minute and second. See picture below:

3) Time zone setup system



3-23 Date Time



3-24 Date set



3-25 Time set

E) Language

Language setup include below:

1) System indication language selection

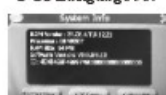
Click language and press or to choose the language, you can choose simple Chinese, complicate Chinese and English in the system

2) System appearance selection

Click appearance and press or to choose the appearance, you can choose yellow and blue in the system.



3-26 Language set



3-27 System Info

F) System information

1) Return manufacture setup

Click "Manufacture" Button to enter "manufacture setup" menu. Click to return manufacture setup, and double click to close the menu. See as 3-28

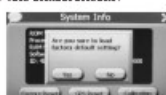
2) Return GPS manufacture setup

Click "GPS Manufacture Setup" Button to enter "GPS manufacture setup" menu. Click to return GPS manufacture setup, and double click to close the menu. See as 3-29

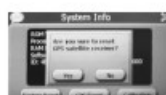
3) Touch screen Adjusting

Click "Touch Screen Adjusting" Button to enter "touch screen adjusting" button menu, see as 3-30

Use the touch-pen to click the across touch center, from center, left up, left down, right up and right down to adjust the touch screen until it can orient successfully. System will close the Touch Screen Adjusting menu automatically and come back to the main menu.



3-28 Factory Reset



3-29 GPS Reset



3-30 Calibration

in a good working state, users should pay much attention to confirm it not to operate either under the temperature higher than 60 degree C or lower than 10 degree C, or the sunshine.

DO NOT scratch the screen surface with a sharp thing;

DO NOT click the screen surface with fingernail, should use the touch-pen;

DO NOT scrub unit housing or the screen surface with water or organic solvent,

Buy special-purpose cleaning spread to clean the screen surface. Please use the adjusting function inside the system while the touch screen is malfunction, in case it is fail to adjust, contact your supplier immediately, DO NOT open the unit by yourself.

2.6. Environment Cautions

A) Avoid to operate this unit under below environment: temperature change quickly, high temperature (above 60 degree), low temperature (0 degree of the following), high pressure, much dust, static interference, moistness, or be immersed in any liquid.

B) Avoid the radiation interference, or radiation from other electronic equipment.

All those would affect the GPS function, remove those radiation, the GPS will display as normal.

3. Operation Instruction

1	Intelligent GPS	Detail pictures and the nationwide GPS for road
2	The medium broadcasting	Audio, video, photograph browsing, e-books
3	Blue-tooth call	Blue-tooth hands-free call, and touch dialing
4	System setup	Volume, power, background lights, date and time, language and system information
5	Review Function	Automatically switch to review function under the backward state if the vehicle has the camera system.



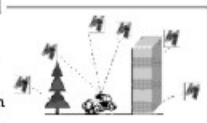
3-1 Menu

3.1 Intelligent GPS

A) This unit receives the signal from satellite with the GPS signal receiver to search the destination actually and display on the map. Usually the system will calculate the best solution automatically after the user setup the destination, which this can help you find the road fast and safe. In order to give you a easy and pleasure tour, the system will let you share our navigation system individual charm with e-map, flash, indicating speech and words etc.

B) About the e-map

The unit uses the latest update e-map for navigation, but please drive according the actual routine under the Transportation Rules and Regulations, as the road will be changed after you got this unit for a while due to the Transportation Department would re-structure the route. Under this situation, please decide which way you should choose and refer the displaying map ONLY. Driver can choose a more effective routine than this GPS if you know the road well around,



3-2 GPS receive environment

or you can drive according to the GPS indication or refer our navigation manual written by our company.

C) About receiving signal

GPS signal receiving will be affected by big and concentrated building (e.g.: tunnel, among huge building, underground parking and high bridge) or weather changing or the satellite signal closing, which will cause GPS can't orient or can't do it correctly then finally will be malfunction and the system will be disfunction. The tolerance of GPS orientation system usually is 8 meters. It will also have some tolerance while driving under the two parallel roads, the actual position maybe has some difference from the e-map, and even sometimes e-map will display on the nearest parallel road.

3.2. Multi-media function

Here introduce the multi-media function as below:

- A) Audio Player B) Picture Browser
C) E-book D) Video Player

A) Audio Player

- The features of audio player
- Support WMA9/MP3/WMA audio format, you can change the order as your want.
- Please copy your audio documents to the memory card before you use it.

B) Audio Player Operation Instruction

Click multimedia menu and choose Audio Player Button see as 3-4



3-3 Multi-media menu

	Stop	Click and Stop off Audio player
	Play	If the music pause/stop, click and Continue to play
	Pause	If the music is playing, press to pause the music
	Stop	If the music is playing, press to stop the music
	Reset Playing Order	Support playing by order, direct playing and continuous playing
	Previous song	Play last song
	Next song	Play next song
	Volume	Pull the Adjusting Button on the volume left and right by touch pen, pull left for minus and pull right for plus
	Schedule	Pull the Adjusting Button on the schedule left and right by touch pen, pull left for backward and pull right for forward and continuous to display
	Folder	Click and come back to the audio folder, choose the your favorite song, see as 3-5
	Song Name/Format	Display the playing song name and the format
	Time	Show how long of the song is playing
	Playing Order	Display current playing order.

A) Volume Setup

Volume setup including below:

- Speaker volume adjusting
- The Clicking Volume on the screen



3-21 Volume set

	Stop off	Click and exit volume adjusting
	Volume -	System has 10 classes volume, you click "-" one time, then the volume decrease 1 class
	Volume +	System has 10 classes volume, you click "+" one time, then the volume increase 1 class
	Clicking Volume	Click and open clicking volume, double click then close
	Current Volume	RED indicate the current volume, every grille means 1 class

B) Power setup

The main function for power setup is to display the power state and this unit can connect with the alternating current.

C) Backlights

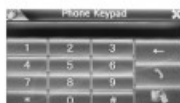
Backlights setup including below:

- Brightness adjusted
- Setup the time gap under alternating current power supply.
Setup the time gap under alternating current power supply.



3-22 Back Light set

	Stop off	Click and exit the backlights setup program
	Brightness -	Click "-" to dark the backlights until the lowest point
	Brightness +	Click "+" to bright the backlights until the highest point
	Move left	Click "Time Gap Column" to move left then display the previous content, and continuous displaying
	Move right	Click "Time Gap Column" to move right then display the next content, and continuous displaying
	Brightness	RED indicate the current brightness
	Time Gap	The backlights will shut off automatically after operating for a while and save the power. Then you will see the continuous displaying "Never", 3 minutes, 2 minutes, 1 minutes, 30 seconds and 10 seconds ----- total 6 selection



3-14 Phone Keypad



3-15 Calling out



3-16 Incoming Call

B) Called Record

Called record is including dial out record, received record and missed call record. All those can dial out or delete directly.

C) Pairing

Pairing means that the blue-tooth system between this unit and the mobile can be connected, and the password for pairing is: SSSS

D) Pairing Record Information

Pairing Record Information means the pairing history record that the unit or the mobile did before, then can pair and delete faster.



3-17 Call Record



3-18 Pair



3-19 Pair devices

3.4. System Set-up

Click the main menu and choose "Set-up Button" to enter system set-up menu. You can reset the system here, including: Volume, Power, Backlights, Date and Time, Language and System Information.



3-20 System menu

Volume	To adjust the speaker volume, and click into volume on the screen.
Power	Check if the power works well.
Backlights	To adjust the brightness of the backlights. Shut off the time gap of the backlights under the battery or a alternating current power supply.
Date and time	Time, date and time zone set-up
Language	System indication language and appearance selection
System Information	Return the manufacture setup, including GPS Manufacture setup and Touch Screen Adjusting

C) Audio folder

	Shut off	Click and close the folder
	Previous page	Show the content of previous page
	Next page	Show the content of next page
	Return	Come back to last folder
	Folder name	Show the displaying audio folder name
	Song name/Format	Song name and its audio format



3-4 Audio player



3-5 Audio folder




3-6 Picture browser

B) Picture Browser

a) The features of the picture browser

- 1) Support JPG/GIF/BMP/PNG format
- 2) Support the picture for rotating, enlarging/downsizing and displaying automatically.
- 3) Please copy your picture documents to the memory card before you use it.

b) Picture Browser Operation Instruction

Click multimedia menu and choose "Picture Browser Button" , see as 3-6

	Shut off	Click and close the picture browser
	Enlarging	To enlarge the size comparing the displaying picture
	Downsizing	To downsize the size comparing the displaying picture
	Rotating Picture	Click the current pictures and clockwise in 90 degree
	Displaying automatically	Click and will continuous display the pictures
	Previous picture	Browse previous picture in the same folder
	Next picture	Browse next picture in the same folder
	Folder	Click and come back to the picture folder, choose the your favorite picture, see as 3-7
	Folder name/Format	Display current displaying picture name and its format

c) Picture folder

	Shut off	Click and close the folder
	Previous page	Show the content of previous page
	Next page	Show the content of next page
	Return	Come back to last folder
	Folder name	Show the displaying picture folder name
	Picture name/Form at	Picture name and its format

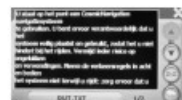


3-7 Picture folder

C) E-book

a) The feature of E-book

- 1) Support TXT format version
- 2) Support to turn the page and page selection or folder selection.
- 3) Please copy your e-book documents (TXT format) to the memory card before you use it.



3-8 E-book

b) E-book Operation Instruction

Click multimedia menu and choose "E-book Button" , see as 3-8

	Shut off	Click and close the E-book
	Previous page	Click and read previous page
	Next page	Click and read next page
	Scampage	Click and display "Page Selection" see as 3-9, can select any page you want to read.
	Folder	Click and come back the folder to choose the book you want to read
	Folder name/Form at	Display current text folder name and its format
	Page No/Total page	Current page number and total page quantities

	Shut off	Click and exit the page selection
	Number keyboard	Among 0-9, can constitute any figure from 0 to 9999.
	Figure Displaying area	Displaying the figures you enter
	Backspace	Press and delete the late st figure
	Zero clearing	To clean all the figures
	Return	Enter the page No, click and come back to that page



3-9 Page selection

	Shut off	Click and close the folder
	Previous page	Show the previous page
	Next page	Show the next page
	Return	Click and Come back to last folder
	Folder name	Display the current book folder name
	Book name/Form at	Book name and its format

3-10 E-book folder

D) Video Player

a) The features of video player

- 1) Support WMA/ASF/AVI format
- 2) Support full screen displaying, schedule and documents selection
- 3) Please copy your video documents (WMV, ASF and AVI format) to the memory card before you use it.



3-11 Video player

b) Video Player Operation Instruction

Click multimedia menu and choose "Video Player Button" , see as 3-11

	Shut off	Click and Shut off Audio player
	Play	If the movie pause/stop, click and Continue to play
	Pause	If the movie is playing, press to pause the music
	Stop	If the movie is playing, press to stop the music
	Skip Forward	Click, the movie will skip forward; cancel, the movie will continuous to display.
	Volume	Pull the Adjusting Button on the volume left and right by touch pen, pull left for minus and pull right for plus.
	Schedule	Pull the Adjusting Button on the schedule left and right by touch pen, pull left for backward and pull right for forward and continuous to display
	Folder	Click and come back to the audio folder, choose the your favorite movie, see as 3-12
	Movie Name/Form at	Display the playing movie name and its format
	Time	Show how long of the movie is playing and the total time

	Shut off	Click and close the folder
	Previous page	Show the content of previous page
	Next page	Show the content of next page
	Return	Come back to last folder
	Folder name	Display the current movie folder name
	Movie name/Form at	Movie name and its format



3-12 Video player folder

3.3. Blue-tooth

Click the main menu and choose "Blue-Tooth Button" , to enter blue-tooth menu. You can operate the blue-tooth function here, including Telephone Keyboard, Called Record, Latest Call, Pairing, Blue-tooth Set-up, and Pairing Information.



3-13 Blue-tooth

A) Telephone Keyboard

Telephone keyboard is including all Arabic numbers and *, #, backspace, call and called record buttons.