
MMC-2611D

User Manual

Contents

Contents	2
1. Summary	3
2. Appearance.....	3
3. Parameter	4
4. Main Functions	5
5. Software setup.....	6
5.1 Function Introduction	7
5.2 Edit Function	13
5.2.1 Pager Registration.....	13
5.2.2 Palm Registration	14
5.2.3 Call Button Registration	15
5.2.4 Manual Send Data.....	16
5.2.3 Data Download	17
6. Usage.....	18
7. Troubleshoots.....	20
8. FCC Important Note	21
FCC Part 15.19 Warning Statement.....	21
FCC Part 15.21 Warning Statement.....	21
FCC Part 15.105(b) Warning Statement.....	22

1. Summary

MMC-2611D works with all MMcAll call buttons. It sends alphanumeric message to pager MMC-NC-8E. The functions are: wireless alphanumeric message paging, wireless deletion, duty repage, dispatch, urge dishes, monitoring function, USB data download and program update etc. It is suitable for restaurants, hotels, banks, bars etc.

2. Appearance



3. Parameter

3.1. Parameter

Category	Parameter
Dimension	200mm * 173mm *37mm
Power supply	12V/ 1.5A
Outside Indicator	Power supply, RX, TX
Configurable transmitting frequencies	462. 750MHZ, 462. 775MHZ, 462. 800MHZ, 462. 825MHZ, 462. 850MHZ, 462. 875MHZ, 462. 900MHZ, 462. 925MHZ
Receiving frequency	433. 500MHZ
Paging No. in cache	40
Repage No. in cache	20
Transmitting power	100mW
Sensibility	-106dB
Antenna	Outside BNC Socket
Capacity	Call button——200 Pager ——20 Palm transmitter——9
Message length	48 digits or letters
Signaling standard	POCSAG, numeric, english and chinese message supported

Temperature	-30℃— +65℃
-------------	------------

Table 3.1 Paging host parameter list

4. Main Functions

Main functions are as following:

1. Wireless receiving function. The host can receive the signals from call button and palm transmitter with feature code, and transmit the message to corresponding pager.

2. The pager has to be MMC-NC-8E, which can display numeric and english message.

3. Text preprogrammed function. The paging unit, such as, table, room, bed etc. and the paging category such as call, bill, water can be preprogrammed to the host and related with corresponding call button. When the button is pressed, the pager will display a complete message, such as Table No.5 calls for service.

4. Repage function. Repage times and interval can be setup between the waiter and his directors. If repaging is not finished yet while you cancel it, the message already sent will be automatically deleted.

5. Palm transmitter can be used for dispatching or urging dishes function.

6. Software sending message function. With computer software, the preprogrammed message can be edited to page the programmed pager for interior staff management.

7. Monitoring function. Connected directly with the computer through USB interface, it can monitor the messages from call buttons and palm transmitters for evaluating staff' working efficiency.

If the installation position of the host can not be connected with the computer, the monitor box can be used for the monitoring function.

8. USB data download and upload , program update function available.

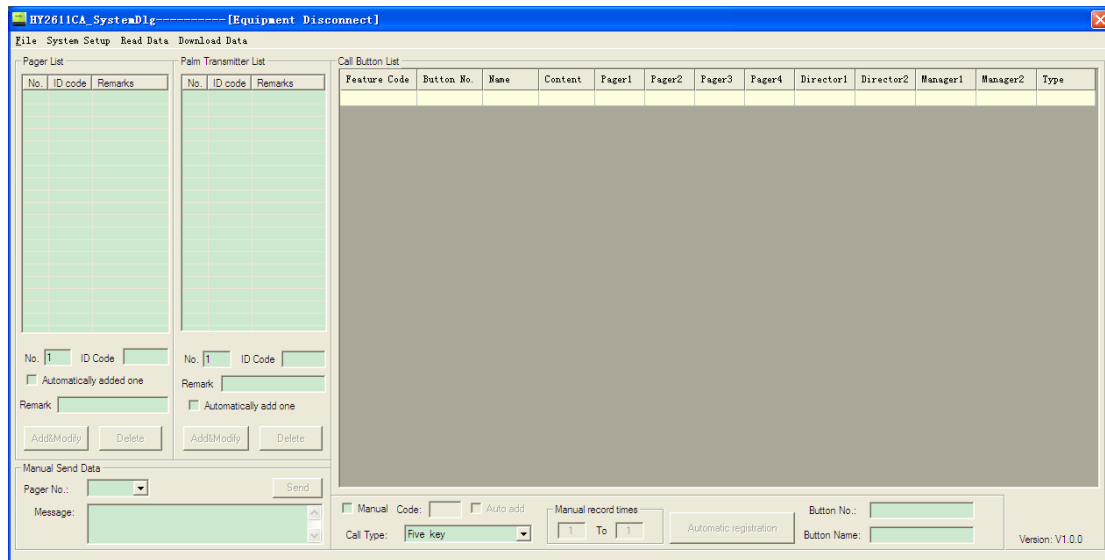
5. Software setup

Before using the paging host, please first setup the host parameter, pager, call button and palm transmitter. Use the CA software to edit and download the information. The software communication with the paging host is USB mode.

Notes: While using, USB can not power on the host, so please connect it with power supply. Otherwise the transmitting and receiving function can not be used.

5.1 Function Introduction

The software interface as picture 5.1 shows, mainly includes pager list, palm transmitter list, call button list and manual send data. In the setup column, there are file, system setup, read data, download data.

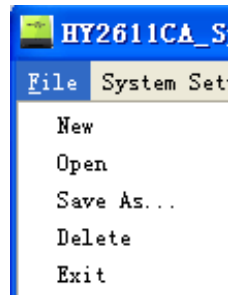


Picture 5.1 TA Software Interface

1、File

As picture 5.2 shows, it's mainly the database operation, including New file, Open, Save as, Delete and Exit.

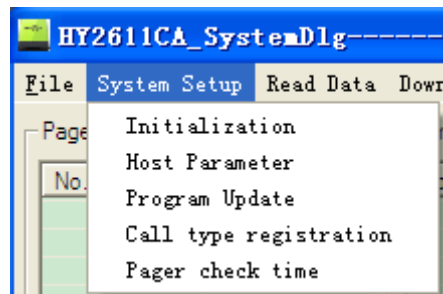
Notes: There should be a database while using the software. For the first time use, it's necessary to setup a new database, you can choose TA or CA database. The two kinds of database are not compatible with each other.



Picture 5.2 File

2. System Setup

System setup including initialization, host parameter, program update, call type registration and pager check time.



Picture 5.3 System Setup

(1) Initialization

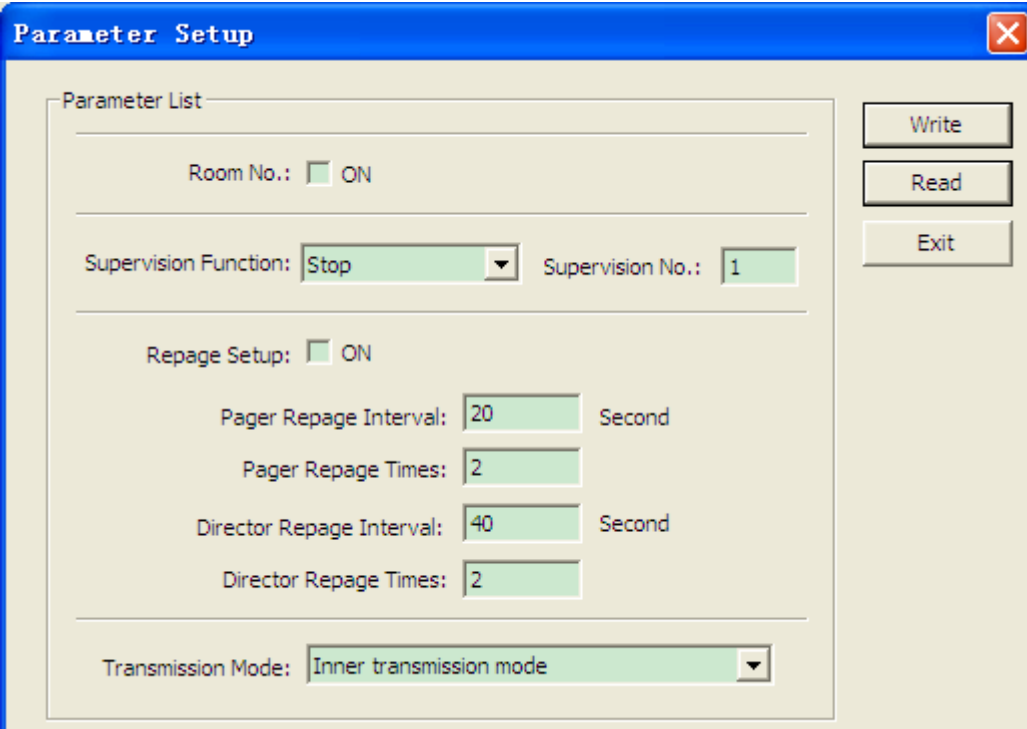
It will initialize all the host parameters.

(2) Host Parameter

Host parameter as picture 5.4, room No. Switch is temporarily invalid, the monitor function needs to work with monitoring software, it can be setup as transmitting data, USB passback, net page passback(customization required), among which transmitting data monitor needs to setup pager receiver No., other modes do not need to setup the No.

Repage setup, it can setup the pager and its director repage times and interval.

Transmission mode, there are two modes: inner transmission mode and 485 output, this is valid only for CA. For TA, only inner transmission mode.



Picture5.4 Host Parameter Setup

(3) Pager check time

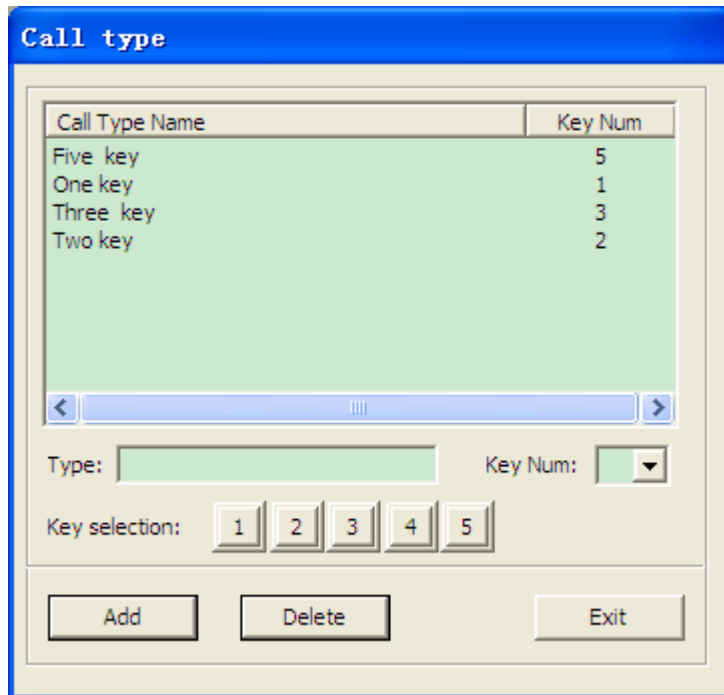
It can check the pagers' time.

Notes: you need to setup group ID, the default ID is 0.

(4) Call Type

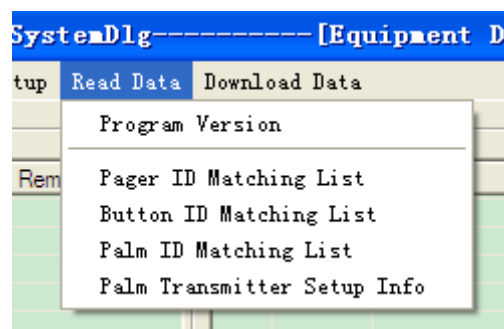
As picture shows, call button type setup, is to edit the multi-key buttons while registering them. Under this option, the call type can be edited and after one key call, the software will automatically show the

preprogrammed type. E.g. The key quantity of E3 button is 3 key, and the key value 1,3,5 is chosen, after you press the call button, the host will automatically list the message key 1,3,5.



3 Read Data

Read those already programmed or downloaded data. If no download, then data read is empty.

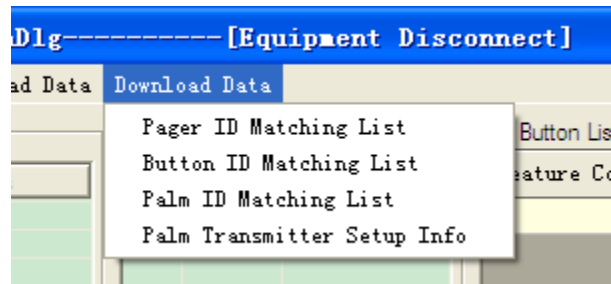


Picture5.5 Read Data

4 Download Data

Every time there is information modification in the host, please

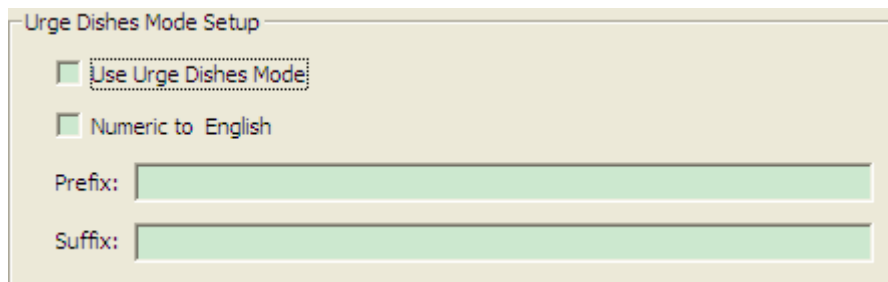
remember to download the data to the host. The host won't automatically update the data.



Picture 5.5 Download data

Download palm transmitter information:

a) Urge dishes mode setup:



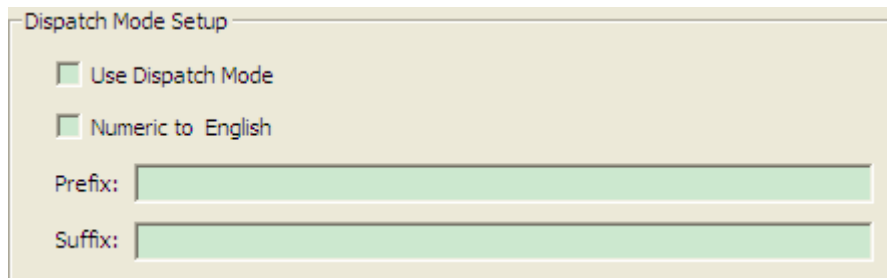
(1) Use the urge dishes mode: tick it, this function can be used.

(2) Numeric to English: tick it, the call button No. will be transferred to english name while sending the message.

(3) Message prefix and suffix: if tick "Use the urge dishes mode", when press button No. XX through the palm transmitter to urge dishes, the host will automatically organize the message and send, the format is: prefix+ call button No. + suffix; if tick "numeric to English", the host will find the relative English name of the call button and send message: prefix+ English name of the call button+suffix.

Notes: While setup, input any number on the palm keypad and press# to send it

b) Dispatch Mode Setup:



Dispatch Mode Setup

☐ Use Dispatch Mode

☐ Numeric to English

Prefix:

Suffix:

(1) Use dispatch mode: if tick it, this function can be used.

(2) Numeric to English: if tick it, the call button No. will be transferred to its relative english name.

(3) Prefix and suffix: if tick “Use dispatch mode”, when press **button No. XX+message content** through the palm transmitter to dispatch, the host will automatically organize the message and send, the format is: prefix+ call button No. + message+suffix; if tick “numeric to English”, the host will find the relative English name of the call button and send message: prefix+ English name of the call button+message content+suffix.

Notes: In dispatch mode, you have to input at least 3 digits then press # to send it correctly.

5.2 Edit Function

5.2.1 Pager Registration

信息机登记如图 5.6 所示，传呼号为信息机编号，从 0~199 之间，地址为信息机地址，该地址要与手表信息机地址相同，地址范围为 8~2097152 之间，如果选择地址码自加 1，则在添加上一个信息机后地址将会被自动加一，备注部分为选填部分，主要用来提示使用者每个信息机的功能与名称。Pager list as picture 5.6, No. is the pager No., which ranges from 0~199, ID code is the pager ID, which should be the same as the one in the pager; pager address ranges from 8~2097152. If you choose automatically added one, then after you add one pager ID, it will automatically add one. The remarks part is optional, which is for the user to know each pager's function and name.

No.	ID code	Remarks

No. ID Code

Remark

☐ Automatically add one

Picture 5.7 Palm Transmitter List

5.2.3 Call Button Registration

In call button registration list, there are manual and automatic registration. Manual Registration needs to input the feature code manually while automatic registration will automatically upload the feature code. Button No. is from 0-1999, name means the name of room where the button locates or where to serve. After registration, the message content can be edited. If you want to define any key as the deletion key, then choose type as no repage. Then it will be able to delete other keys' paging message.

5.2.3 Data Download

1. Pager parameter

Download pager parameter

2. Call button parameter

Download call button parameter

3. Palm transmitter parameter

Download palm transmitter parameter

4. Palm transmitter setup information

6. Usage

After programming all the data, please download it to the host, then it will work.

- 1). Normal call:

Press CALL on the button, the host light will shine after receiving the signal, then read the edited text message and transmit it to the relative pager.

- 2). Delete call

Press CANCEL on the button, with the condition that the host has already preprogrammed with the CANCEL function. Then it will cancel the message in the pager.

- 3). Duty repage

The duty repage schedule is as following:

Press CALL, the button will repage as the preprogrammed schedule(such as 20 seconds, repage three times), if it still has not been canceled by the CANCEL button, it will start repaging the director, still as the preprogrammed schedule(times, interval), if still not been canceled, then it will repage the superior director, after one time page, the whole repage process ends.

In the process of repaging, if customers press the CALL for many times, the repage won't be interfered, just the waiter will receive more new pages. After repage ends, if there are new page, the repage function will start again.

If in the process of repaging, press the CANCEL of the call, then the repage will stop immediately. And the message in the pager will be deleted automatically.

- 4). Send message through software

Open the software, input the pager No. and the message needs to be sent, the length of the message is 48 digits or letters, then click send, if the software appear a successful prompt and the TX light of the host is on, which means the message is sent successfully. The pager will receive messages successfully.

- 5). Usage of palm transmitter

Urge dishes and dispatch function can be realized by palm transmitter.

a. Program the palm transmitter and host to urge dishes mode(A mode), input the table No.(call button No.) of the related dishes on palm, press SEND, then the waiter will receive the message and go to fetch dishes.

b. Program the transmitter and host to dispatch mode(B mode), input a three digit number of the pager and maximum 5 digit table No. One palm, then press SEND to send this table message to waiter pager to dispatch the waiter serve for that table

Notes: In this mode, the pager number has to be three digits, such as, No.1 please input as 001. Table No. can be from one to five digits, such as 1, 01, 001, 0001, 00001 which all means table No. 1.

- 6). Monitor function:

After programming the monitor function, choose the relative monitor method, it will send back to the monitor relative monitoring information.

- 7) USB upgrade:

After using CA software to download the program successfully, the host need to be repowered on. While power on, if “R” and “T” light flashes, which means it’s upgrading. If it stops flashing, it means

finishing upgrade. During the upgrade process, remember not to cut off the host power supply, otherwise it will effect the upgrade.

7. Troubleshoots

Problems	Solutions
Plug in the power supply, but the power indicator light is not on	Please check the socket whether there are 12V current output and check the power switch of the host is on
The host can be operated through USB communication, but after press call button, the RX light does not shine.	No outer power supply, USB power can just download or read the data,wireless operation is not supported
Press call button, RX light shines, but TX light does not shine	Please connect with USB to read the data, to check whether the call button has been programmed to relative pager and whether the pager is valid
After connecting USB cable, the software shows no connection	Please check whether USB is good. Check the computer--device manager: whether there are human input device and restart the software
The transmitter is connected through 485 interface but the data can not be sent	Please check the setup, whether the transmission mode is 485output mode. Check whether there are problems with the cable

<p>The transmission distance is too close</p>	<p>Check the RX and TX antenna are in a opposite position</p> <p>If there are electronic wire around the TX antenna, please keep the electronic wire far away from the antenna</p> <p>If the TX antenna is close to the metal, please keep the antenna far away from the metal</p>
---	--

8. FCC Important Note

FCC Part 15.19 Warning Statement

THIS DEVICE COMPLIES WITH PART 15 OF THE FCC RULES. OPERATION IS SUBJECT TO THE FOLLOWING TWO CONDITIONS: (1) THIS DEVICE MAY NOT CAUSE HARMFUL INTERFERENCE, AND (2) THIS DEVICE MUST ACCEPT ANY INTERFERENCE RECEIVED, INCLUDING INTERFERENCE THAT MAY CAUSE UNDESIRE OPERATION.

FCC Part 15.21 Warning Statement

NOTE: THE GRANTEE IS NOT RESPONSIBLE FOR ANY CHANGES OR MODIFICATIONS NOT EXPRESSLY APPROVED BY THE PARTY RESPONSIBLE FOR COMPLIANCE. SUCH MODIFICATIONS COULD VOID THE USER'S AUTHORITY TO OPERATE THE EQUIPMENT.

FCC Part 15.105(b) Warning Statement

NOTE: This equipment has been tested and found to comply with the limits for a Class B digital device, pursuant to part 15 of the FCC Rules. These limits are designed to provide reasonable protection against harmful interference in a residential installation. This equipment generates, uses and can radiate radio frequency energy and, if not installed and used in accordance with the instructions, may cause harmful interference to radio communications. However, there is no guarantee that interference will not occur in a particular installation. If this equipment does cause harmful interference to radio or television reception, which can be determined by turning the equipment off and on, the user is encouraged to try to correct the interference by one or more of the following measures:

- Reorient or relocate the receiving antenna.
- Increase the separation between the equipment and receiver.
- Connect the equipment into an outlet on a circuit different from that to which the receiver is connected.
- Consult the dealer or an experienced radio/TV technician for help.

RF EXPOSURE

This equipment complies with the FCC RF radiation exposure limits set forth for an uncontrolled environment. This equipment should be installed

and operated with a minimum distance of 20 cm between the radiator and any part of your body.