

CA Tune up procedure v1.1

Tune-Up procedure over the power range is 1W

Tolerance while tuning up is +/- 10%

一、 Transmit test:

● Instrument needed:

1、 Spectrum Analyzer

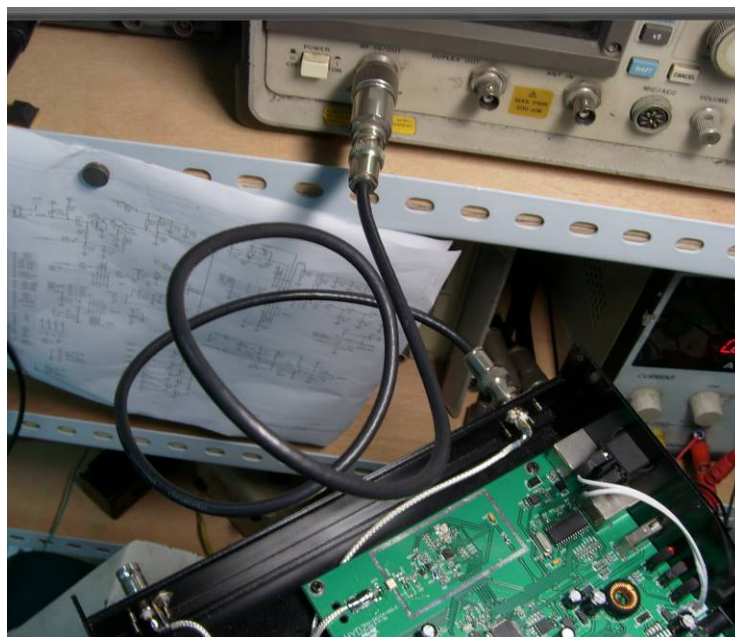
● Software needed:

1、 CA software V1.0.1;

● Procedure:

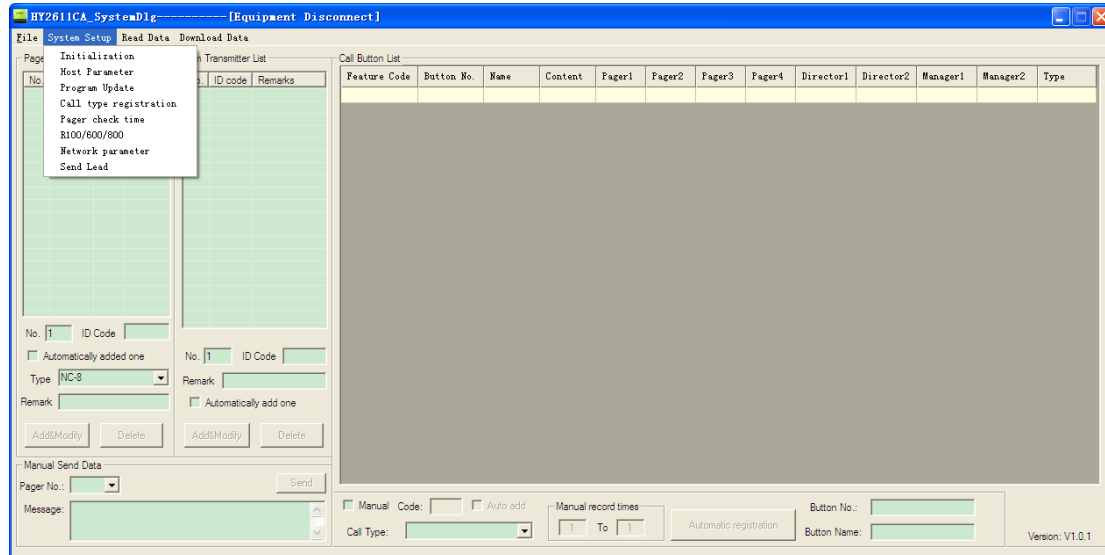
1、 Directly connect the spectrum analyzer with CA host transmitting antenna socket by BNC connector cable, as picture shows: (notes: (Notes: While CA is in the state of transmitting, its transmitting power may be over 500mW but will be below 1W, please make sure not to destroy the spectrum analyzer while connection)

2、



Picture for CA transmitting directly connected with spectrum analyzer

- 3、 Use USB cable to connect it, software as the below picture, click Send Lead, it will enter long continuous transmit status and T light will be on. If click again Send Lead , T light will be off and exit the Send Lead mode.



Picture for CA software operation in transmitting status

- 4、 Watch the light indicator, if it shows as the below picture, which means CA is already in transmitting test status.



Picture for CA into transmitting status

At this time, CA is already in transmitting status, use the spectrum analyzer to test it.