

Multi-Web PAD

[How to Change the User]

- 1) Click Start > Log Off.
- 2) Click Change the User.



- 3) Click the Name of User on Start Window, and you can log in with the new user's name.

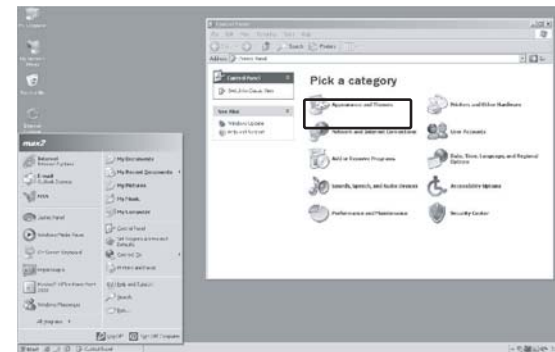
Multi-Web PAD

Appearances and Themes

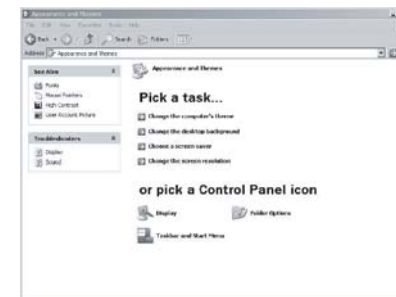
In Appearances and themes you can change the basic window, resolution, and color. It is largely divided with choices of work or control panel. (To the standard of control panel classic view)

[How to Use Work Choice]




- 1) Click Start > Control Panel > Appearances and Themes.

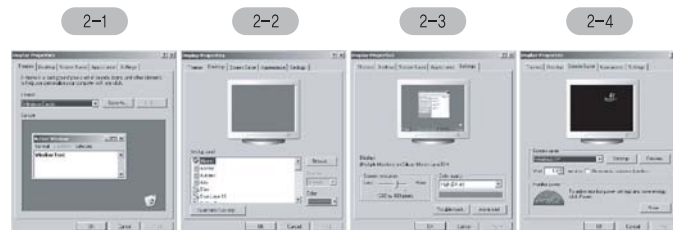


- 2) Windows for Appearances and Themes would be opened, and you could see Choose Work or Control Panel icons.



Multi-Web PAD

Work Choice		
2-1	Change the computer's there	User can change Multi-Web PAD as he wants, using previously defined background, sound group, and theme as other element.
2-2	Change the desktop background	User can change background window of Multi-Web PAD as he wants.
2-3	Choose a screen saver	User can darken the screen or change it into moving picture or pattern as he wants, if he is not using Multi-Web PAD.
2-4	Change the screen resolution	User adjusts the screen with optimal sight by changing resolution and quality of colors.
Or Choose Control Panel Icons		
2-5	 Display	Same with Change the Computer's There.
2-6	 Folder Option	Includes options about folders.
2-7	 Taskbar and Start Menu	User can change work presentation bar and start menu.



Multi-Web PAD



Reference

Resolution and quality of colors may be different according to types of Multi-Web PAD LCD, so please properly install for each model.
(LCD-installment of each model is equally applied on 14-inch main monitor and 7-inch sub monitor.)

Model Name	LCD Size	Resolution	Quality of Colors
14inch Multi-Web PAD	14inch	1024 * 600	16 bit
	7inch	1024 * 600	16 bit

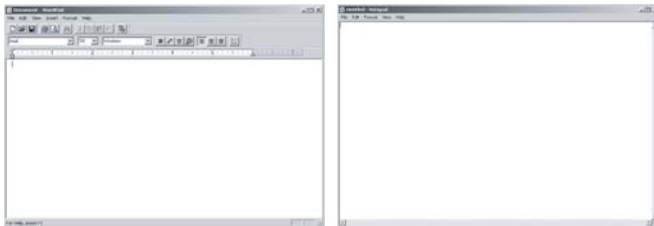
Multi-Web PAD

Making Documents

It explains about how to use WordPad and NotePad, which are offered by Windows XP.

[How to Use Word Pad and Note Pad]

- 1) Click Start > Accessories > WordPad or NotePad.



WordPad

NotePad

- 2) When the relative program works, use On-Screen Keyboard or make a document after connecting the keyboard with USB.



On-Screen Keyboard

- 3) Click File > Save as to save the written document.

Multi-Web PAD

Using Internet

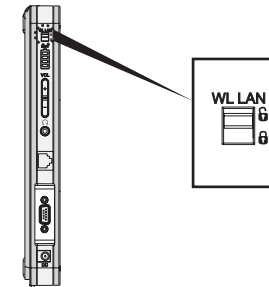
You can use internet by linking wired or wireless Network to be fit for the convenient environment of users.

Wireless Communication

With Wireless LAN users can use internet or connect several computers at home or office with no need of connecting separate LAN cable.

[How to Use Wireless Communication]

- 1) To use wireless LAN, firstly operate the WL LAN button located on the upper-left side to be dissolved.

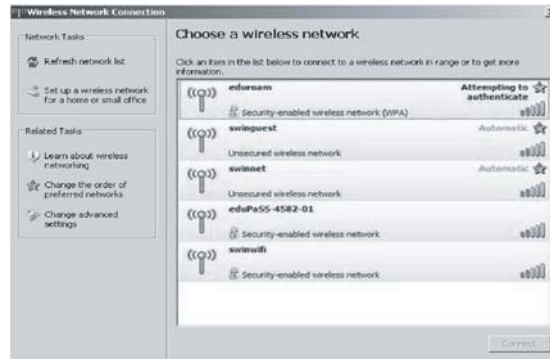


- 2) Right-click Wireless Network Connection icon on the work presentation bar and then click View Available Wireless Networks.



Multi-Web PAD

- 3) Choose the AP to link and click Link. If the AP to be linked is established with network key, the network key will be shown. So put in the network key on the input window and click confirm. (Ask about network key to whom in charge of network key.)



- 4) When AP link is marked you can use wireless network. When the link is done, work presentation bar would show the linking status of wireless LAN.



Reference

AP(Access Point)

It is a device to wired and wireless LAN. Wired network is pertinent to wireless Hub, and several wireless LAN-installed computers can be connected.

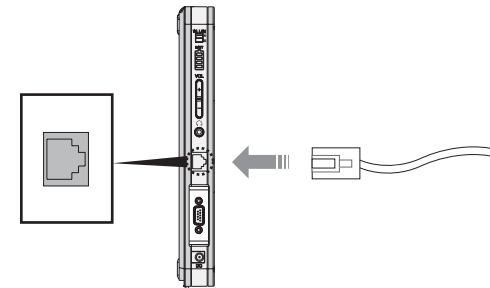
Multi-Web PAD

Wire Communication

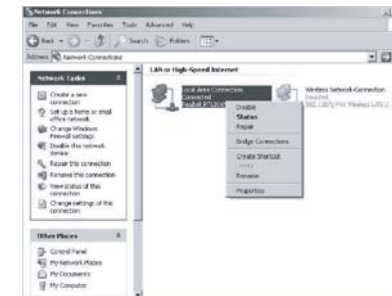
Wire LAN is a network environment using on company networks or express home networks.

[How to Use Wire Communication]

- 1) First of all, connect the LAN port in the central left with LAN cable, to use wire LAN.



- 2) Click Start > Control Panel > Network and Internet Connections > Network Connections.
- 3) After right-clicking Local Area Connection (press Stylus Pen longer than 3 seconds,) click Properties.



Multi-Web PAD

- 4) Check LAN driver in Connect Using of General Tap, choose Internet Protocol (TCP/IP) and click properties.



Reference

LAN driver may differently appear according to kinds of the product and LAN device.

- 5) Check the following items for IP installation.
 - Use DHCP: Choose Obtain an IP Address Automatically,
 - Use Fixed IP: Choose Use the Following IP Address and put in the relative items,



Reference

In case of fixed IP, please ask the staff in charge of network about the IP address.

- 6) After finishing all inputs, click OK. Upon ending of network-establishment, it is available.

Multi-Web PAD

Establishment of Screen Brightness

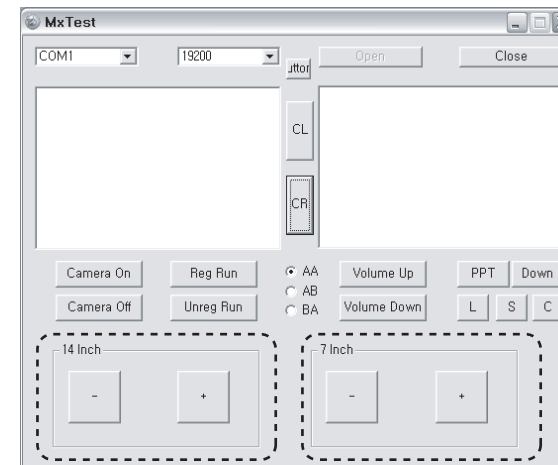
Brightness of 14 and 7-inch LCD's for Multi-Web PAD is adjustable according to user's convenience.

[Enter to Establish Brightness]

- 1) Double-click MxTest program on start presentation bar, to activate the window.



- 2) Click + or - to establish brightness of 14 and 7-inch screens.



Multi-Web PAD

● Setup

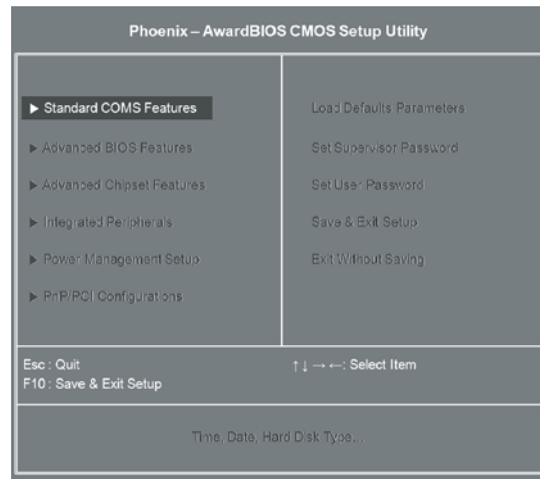
BIOS (Basic Input and Output System) is a menu-focused utility, and the environment of Multi-Web PAD is adjustable to be fit for users.

BIOS Setup

Established figure on BIOS Setup program is very influential on how Multi-Web PAD performances. Please correctly understand the options of Setup before using it. Be careful not to cause any malfunction due to mistaken establishment of Setup.

[Enter to BIOS Setup]

- 1) Press power button to turn on Multi-Web PAD and press DEL button to move on to Setup window. (You must use USB-connected keyboard.)
- 2) BIOS Setup initial window would be shown. (Content of setup may be different according to products.)



Multi-Web PAD

- 3) Choose the menu to change and change installation figure. After finishing change, save it and end BIOS Setup.

BIOS SETUP MENU	
Standard COMS Features	It's a menu to setup general items. There are functions to establish date, time, hard disk, video card, post check, or memory check.
Advanced BIOS Features	It is a menu to improve system performance.
Advanced Chipset Features	It is a menu to setup main chipset figure in peripheral devices.
Integrated Peripherals	It is a menu to setup interface of peripheral devices or in-line and parallel port of hard disk interface.
Power Management Setup	It is a menu to manage system power to make it effectively used.
PnP/PCI Configurations	It is a menu to automatically recognize and basically establish devices on various plug & play wares and PCI-peripheral devices.
Load Defaults Parameters	It is a menu to change into the figure that is fixed when it entered the market. You can change it into CMOS Setup initial mode.
Set Supervisor Password	It gives the password when booting CMOS Setup or Multi-Web PAD. In case Multi-Web PAD is shared by many users, this menu determines the password to cover the whole.
Set User Password	When they use it by oneself or if many people share it, this menu is used to give a password on the pertinent Multi-Web PAD.
Save & Exit Setup	It is a menu to escape from CMOS Setup after saving it.
Exit Without Saving	It is a menu to exit without saving CMOS Setup.

Multi-Web PAD

Utilizing BIOS SETUP Keys		
F1	General Help	You can see explanations about keys which are available on Setup window.
F10	Save & Exit Setup	Press the pertinent key, and 'Save to CMOS and EXIT (Y/N)?' would appear. Choose YES and press Enter here to end BIOS Setup after saving changed content of setup.
Enter	Go to Sub Screen	Choose the menu and press Enter to move onto Sub Menu, or to confirm the chosen menu.
Esc	Quit	It is used to escape from the menu or end BIOS Setup.
↑ / ↓	Select Item	It is used to move up and down the menu.
← / →		
+ / -	Change Option / Field	It is used to change established figure from chosen menu.

Multi-Web PAD

Using the Battery

The battery is an internal power device made to use in other places than office or home. Please fully recognize about how to use the battery.

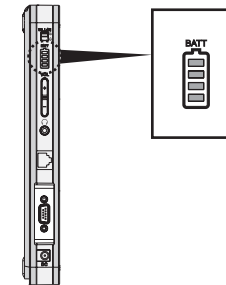
Checking the Battery Capacity

To check remains of the battery installed in Multi-Web Pad, see the LED on the upper-left side of the product.

CAUTION
RISK OF EXPLOSION IF BATTERY IS REPLACED
BY AN INCORRECT TYPE.
DISPOSE OF USED BATTERIES ACCORDING
TO THE INSTRUCTIONS

[Checking the Battery Capacity – LED]

- 1) To see remains of the battery, check BATT LED on the upper left side of Multi-Web PAD.



Multi-Web PAD

[In Case the Battery Capacity is in Short]

- In case remains of the battery is low, alarming sound and message would appear to inform that. In this case, connect AC adapter to use the product.
- In state of LOW battery and AC adapter is not connected, Multi-Web PAD may not be booted although you pressed the Power button. Try booting again after connecting AC adapter.
- In case remains of the battery is low, you must save the content which you work and then connect AC adapter. Or the data may be lost.

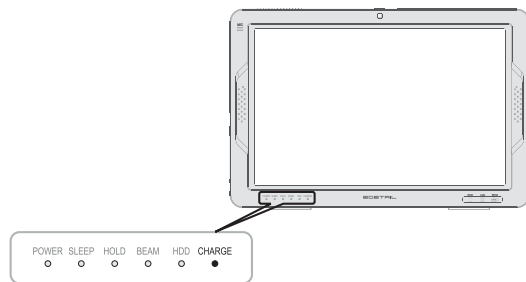
[To Minimize Consumption of the Battery]

- Use Power Management function.
- Power off when you ended its use.
- Low brightness of LCD.

[How to Charge the Battery]

- After installing the battery in Multi-Web PAD, connect AC adapter into power input jack to start charging.
- Charge LED would light off when charging is finished.

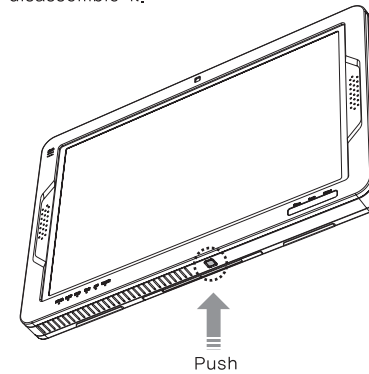
Confirm the Charging State



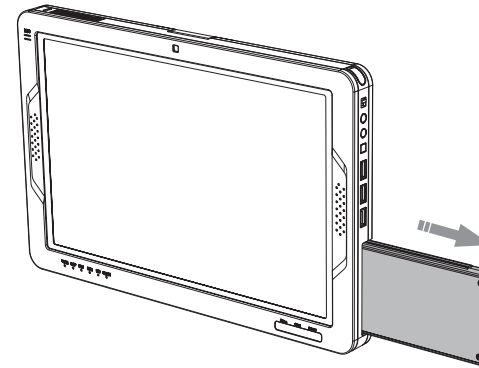
Multi-Web PAD

[Disassemble and Install the Battery]

- 1) Power off Multi-Web PAD and press the button on the bottom to disassemble it.

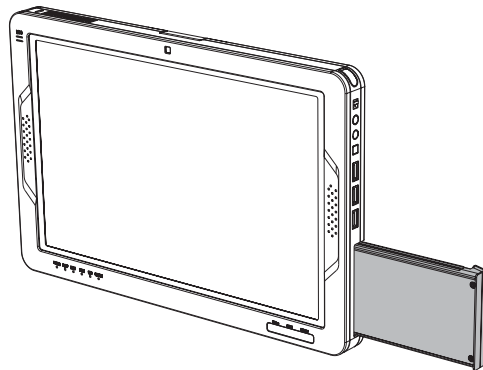


- 2) Pull the battery in protruded direction to disassemble.



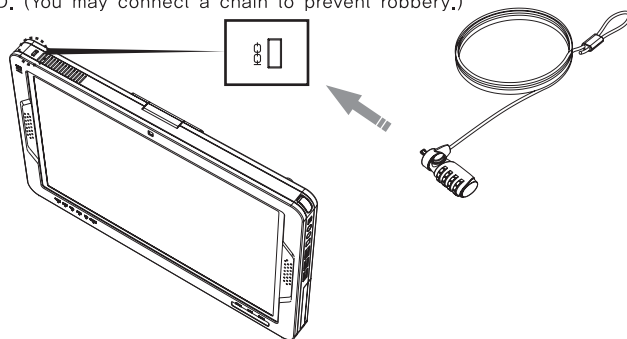
Multi-Web PAD

- 3) To re-install the battery, pull it in the battery-installment part.



- Preventing Robbery -

You can connect an external device to prevent robbery of Multi-Web PAD. (You may connect a chain to prevent robbery.)



Multi-Web PAD

Product Specifications

Product Specifications may be different according to models. Please refer to the catalogue offered when you purchase the product.

Product Name	
CPU	AMD Geode LX800
OS	Microsoft Windows XP Home Edition SP2
Chipset	AMD Geode CS5536
Memory	512M SO-DIMM PC2700 DDR333 / 1G SO-DIMM PC2700 DDR333
HDD	30G / 60G / 80G
Graphic System	SM722
	128-Bit 2D/3D Graphics Engine
	High Integration with 8MB of Internal Memory
	Hardware Acceleration MPEG2/DVD Playback
Display	Main LCD: 14.1 Wide TFT Glare LCD(standard 1280 x 800, LED Back light)
	Sub LCD: 7" Wide TFT Glare LCD(standard 1024 x 600, LED Back light)
Sound System	AC" 97 2.3 compatible stereo audio CODEC
LAN	1000 BASE-TX/100BASE-TX/10BASE-T
Wireless LAN	IEEE802.11b/g
Pointing device	Touch screen
Camera	1.3M/USB2.0
Speaker	Stereo speaker(0.5W + 0.5W)
Interface	Right: USB2.0 x 3, PT S/W, Power
	Left: RJ-45 Jack, volume control S/W, WLAN S/W
	Ear Phone Jack, Power Jack D-Sub 15Pin
	LCD front: Touch Pad:Camera S/W, Beam S/W, Dv S/W
Battery	Lithium ion battery (8.4V, 5600mAh), 2hour(on wireless)
AC adapter	Input 100-240V, 50/60Hz

Reference

- Product specification may be changed without any prior notice.

● Written Guarantee and Customer Support



Written Guarantee

Product Name: Multi-Web PAD

We guarantee the quality of this product for a year from the purchased date, of which regulations are following.

Regulations of the Written Guarantee

1. AS-guaranteed Product: Multi-Web PAD
2. AS-guaranteed Period: 1 year from the purchased date,
(15 months from manufacturing date in case the purchased date is uncertain.)
3. Free Service
 - In case of any flaw within the AS-guarantee period.
4. Services in Charge
 - In case of any flaw from the product of which AS-guarantee period is over.
 - In case of any disorder due to fire, flood, thunderbolt, or other natural calamities.
 - In case of any flaw due to reform or repair at the user's discretion.
 - In case of any flaw due to other faults of the customer.
5. Transportation for AS
 - The product must be transported directly to this company, in principle.
 - Taking-in charge within free AS period is paid by the user, while taking-out charge is paid by this company.
 - Both of taking-in and taking-out charges after free AS period are paid by the user.
 - Both of taking-in and taking-out charges for the product with no flaw are paid by the user.

E-DETAIL Co., Ltd. (Seal is omitted)

Information on Customer Support Office

Telephone of Customer Support Office: +82-51-510-3354
Internet Customer Support Office: <http://www.e-detail.co.kr>

