



CTK Co., Ltd.
The Prime Leader of Global Regulatory Certification

CTK Co., Ltd.

386-1, Ho-dong, Cheoin-gu, Yongin-si, Gyeonggi-do, 449-100, Korea
Tel: +82-31-339-9970 Fax: +82-31-339-9855
www.e-ctk.com

EMC TEST REPORT For FCC



Test Report No. : CTK-2012-00665
Date of Issue : July 6, 2012
FCC ID : WF5LKP12WQ
Model/Type No. : LK-P12W and LK-P12AW
Kind of Product : Mobile Printer
Applicant : SEWOO TECH CO., LTD.
Applicant Address : 28-6, Gajangsaneopdong-ro, Osan-si, Gyeonggi-do, 447-210, Korea
Manufacturer : SEWOO TECH CO., LTD.
Manufacturer Address : 28-6, Gajangsaneopdong-ro, Osan-si, Gyeonggi-do, 447-210, Korea
Contact Person : Min-Seok Song / Senior Engineer
Telephone : +81-70-4035-3372
Received Date : April 10, 2012
Test period : Start : April 23, 2012 End : April 24, 2012
Test Results : ☒ In Compliance ☐ Not in Compliance

The test results presented in this report relate only to the object tested.

Tested by

Bong-jun, Jang
EMC Test Engineer
Date: July 6, 2012

Reviewed by

James Hong
EMC Technical Manager
Date: July 6, 2012



CTK Co., Ltd.
The Prime Leader of Global Regulatory Certification

CTK Co., Ltd.

386-1, Ho-dong, Cheoin-gu, Yongin-si, Gyeonggi-do, 449-100, Korea

Tel: +82-31-339-9970 Fax: +82-31-339-9855

www.e-ctk.com

REPORT REVISION HISTORY

Date	Revision	Page No
July 6, 2012	Issued (CTK-2012-00665)	All

This report shall not be reproduced except in full, without the written approval of CTK Co., Ltd. This document may be altered or revised by CTK Co., Ltd. personnel only, and shall be noted in the revision section of the document. Any alteration of this document not carried out by CTK Co., Ltd. will constitute fraud and shall nullify the document.



CTK Co., Ltd.
The Prime Leader of Global Regulatory Certification

CTK Co., Ltd.

386-1, Ho-dong, Cheoin-gu, Yongin-si, Gyeonggi-do, 449-100, Korea
Tel: +82-31-339-9970 Fax: +82-31-339-9855
www.e-ctk.com

TABLE OF CONTENTS

REPORT REVISION HISTORY	2
1.0 General Product Description	4
1.1 Model Differences	4
1.2 Device Modifications	4
1.3 EUT Configuration(s)	5
1.4 Test Software	6
1.5 EUT Operating Mode(s)	6
1.6 Configuration	7
1.7 Calibration Details of Equipment Used for Measurement	9
1.8 Test Facility	9
1.9 Measurement Procedure	9
1.10 Laboratory Accreditations and Listings	10
1.11 Measurement Uncertainty	10
2.0 Emissions Test Regulations	11
2.1 Conducted Voltage Emissions	12
2.2 Radiated Electric Field Emissions	13
APPENDIX A – TEST DATA	14
Conducted Voltage Emissions	14
Radiated Electric Field Emissions	22
APPENDIX B - Test Setup Photos and Configuration	26
Conducted Voltage Emissions	26
Radiated Electric Field Emissions	27
APPENDIX C – EUT Photographs	28
EUT Internal Photographs	31
PCB	32
Battery Charger 1&2	35
Battery	37
Label and Location	38

1.0 General Product Description

1.0.1 Tested Equipment

- ☒ Unless otherwise indicated, all tests were conducted on Model LK-P12W.
- ☒ Tests performed on Model LK-P12W were considered to be representative of Model LK-P12AW.

1.0.2 Equipment Size, Mobility and Identification

Dimensions: 104(W) by 85(D) by 158(H) ☒ mm
Mobility: ☒ Table-top ☐ Floor-standing ☐ Built-in ☒ Portable
Serial No.: Prototype

1.0.3 Electrical Ratings

[Battery Charger 1] Input: 100-240 Vac, 50-60 Hz, 400 mA
Output: 8.4 Vdc, 0.8 A

[Battery Charger 2] Input: 100-250 Vac, 50-60 Hz, 0.5 A
Output: 8.4 Vdc, 0.8 A

[EUT] Input : 8.4 Vdc
Output : -

1.0.4 Test Voltage & Frequency

Unless indicated otherwise on the individual data sheet or test results, the test voltage and frequency was as indicated below.

Voltage: 120 Vac
Frequency: 60 Hz

1.0.5 Clock & Other Frequencies Utilized

12 MHz

1.1 Model Differences

These models are identical except for as below;

- LK-P12W is Basic model.
- LK-P12AW are identical to LK-P12W only except for model name according to buyer request.

1.2 Device Modifications

The following modifications were necessary for compliance:
Not applicable

1.3 EUT Configuration(s)

See Appendix B for individual test set-up configuration(s). The following peripheral devices and/or interface cables were connected during the measurement:

[USB/Serial Printing Mode]

☒ Peripheral Devices

Device	Manufacturer	Model No.	Serial No.
Personal Computer	comwins	DB-P73	BL5497DQ300097T
LCD Monitor	Lite-On Technology Corp.	VS17	CNN5130QMC
Mouse	LOGITECH	M-U48a	LZC10705528
Keyboard	MONTEREY INTERNATIONAL CORP.	K6515	ZCH3011

☒ Cable Description

#	Description	Ferrite Core	Length (m)	Other Details
1	AC power Cable, Unshielded	No	1.8	Connect to AC power
2	Mouse Cable, Shielded	No	1.5	Between a Personal Computer and a Mouse
3	Keyboard Cable, Shielded	No	1.5	Between a Personal Computer and a Keyboard
4	D-sub Cable, Unshielded	Yes	1.5	Between a Personal Computer and a LCD Monitor
5	USB Cable, Shielded	Yes	1.2	Between the EUT and a Personal Computer
6	Serial Cable, Shielded	No	1.2	Between the EUT and a Personal Computer

[Battery Charging Mode: Battery Charger 1]

☒ Peripheral Devices

Device	Manufacturer	Model No.	Serial No.
Battery Charger 1	Dongguan Shilong Fuhua Electronic Co., Ltd.	UE09WCP-084080SPC	-

☒ Cable Description

#	Description	Ferrite Core	Length (m)	Other Details
1	DC In Cable, Unshielded	No	1.2	Between the EUT and a Battery Charger 1
2	AC Power	-	-	Connect to AC power
3	USB Cable, Shielded	Yes	1.2	Connect to the EUT
4	Serial Cable, Shielded	No	1.2	Connect to the EUT

[Battery Charging Mode: Battery Charger 2]

☒ Peripheral Devices

Device	Manufacturer	Model No.	Serial No.
Battery Charger 2	BridgePower Corp.	BL607080086100NK	-

☒ Cable Description

#	Description	Ferrite Core	Length (m)	Other Details
1	DC In Cable, Unshielded	Yes	1.2	Between the EUT and a Battery Charger 2
2	AC Power	No	1.8	Connect to AC power
3	USB Cable, Shielded	Yes	1.2	Connect to the EUT
4	Serial Cable, Shielded	No	1.2	Connect to the EUT



CTK Co., Ltd.
The Prime Leader of Global Regulatory Certification

CTK Co., Ltd.

386-1, Ho-dong, Cheoin-gu, Yongin-si, Gyeonggi-do, 449-100, Korea
Tel: +82-31-339-9970 Fax: +82-31-339-9855
www.e-ctk.com

1.4 Test Software

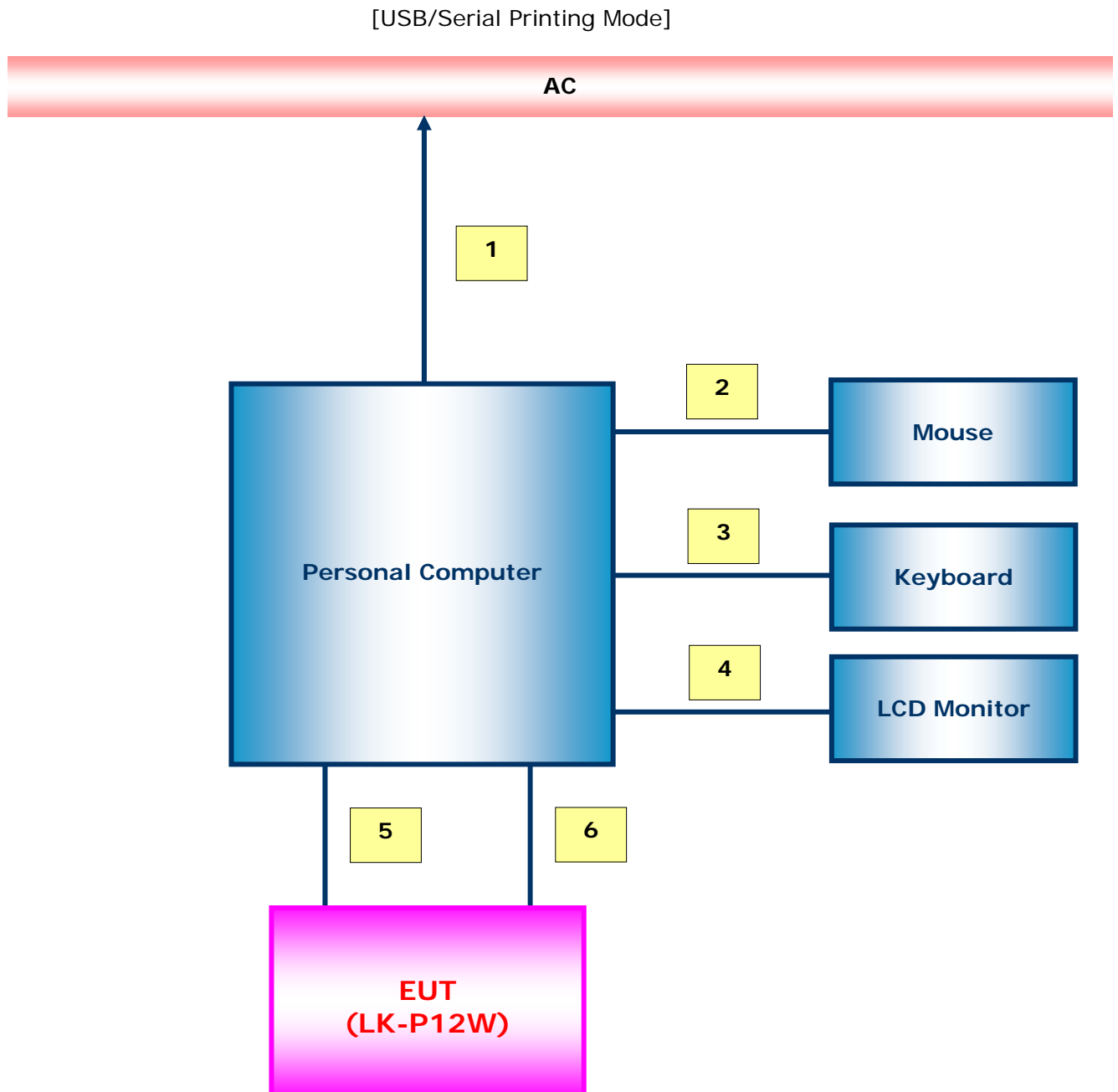
- ☐ EMC Test V 1.0
- ☐ Display Test Patterns – V1.8
- ☐ Ping.exe
- ☒ LK-Pxx CPCL TEST Program (20120126)

1.5 EUT Operating Mode(s)

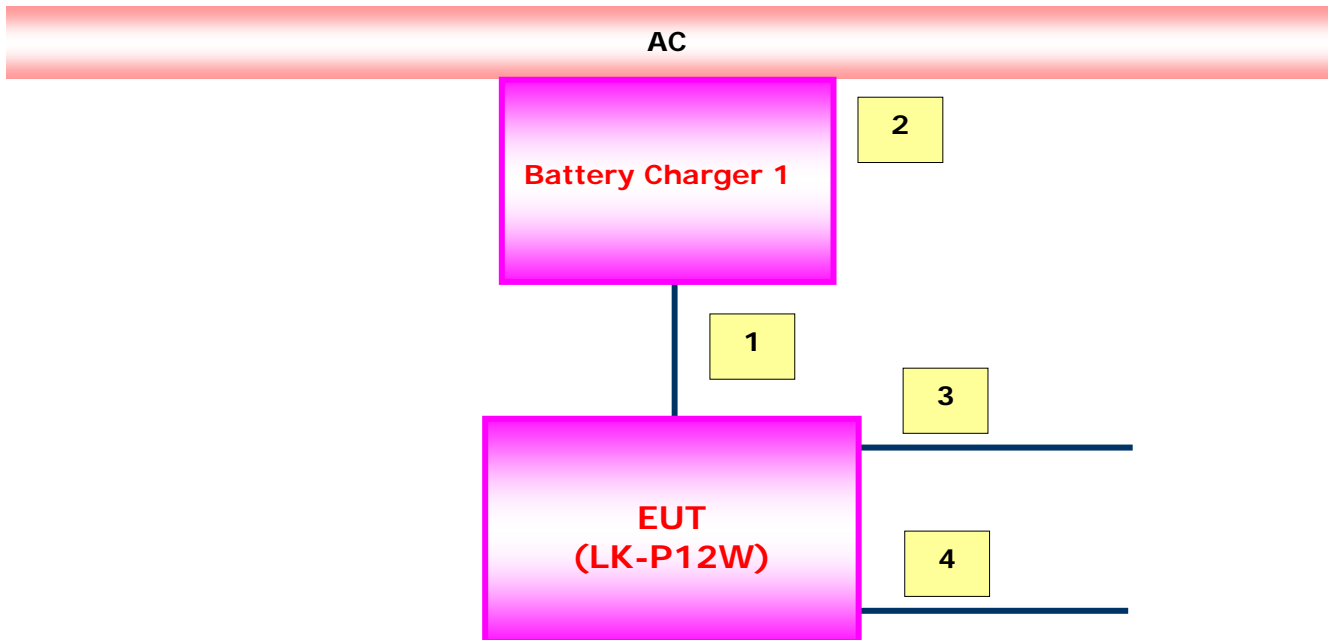
Equipment under test was operated during the measurement under the following conditions:

- | | |
|--|--|
| <input type="checkbox"/> Standby | <input type="checkbox"/> Scrolling 'H' |
| <input type="checkbox"/> Display circles pattern | <input type="checkbox"/> Display color bar pattern |
| <input checked="" type="checkbox"/> Practice operation – | |
| 1) USB/Serial Printing Mode | |
| 2) Battery Charging Mode | |

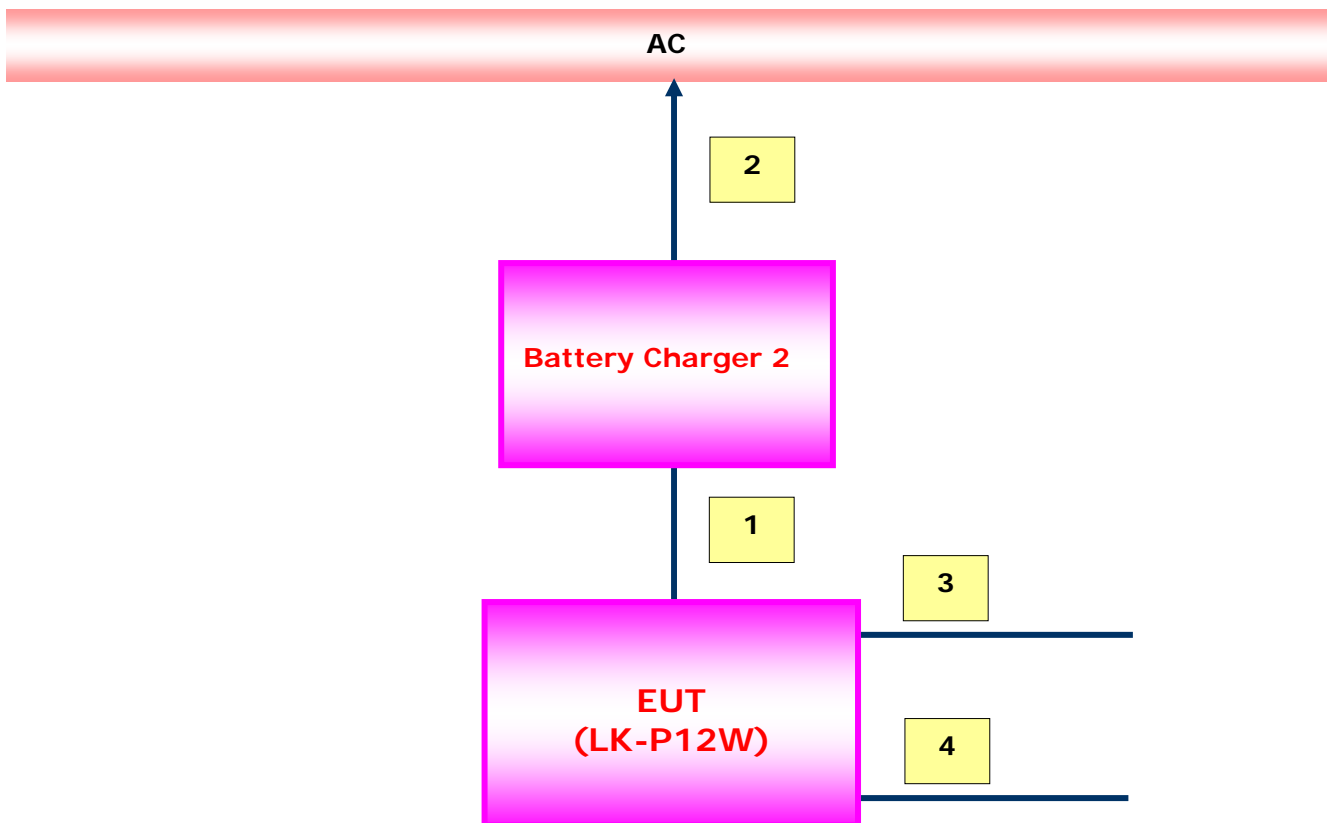
1.6 Configuration



[Battery Charging Mode: Battery Charger 1]



[Battery Charging Mode: Battery Charger 2]





CTK Co., Ltd.
The Prime Leader of Global Regulatory Certification

CTK Co., Ltd.

386-1, Ho-dong, Cheoin-gu, Yongin-si, Gyeonggi-do, 449-100, Korea

Tel: +82-31-339-9970 Fax: +82-31-339-9855

www.e-ctk.com

1.7 Calibration Details of Equipment Used for Measurement

Test equipment and test accessories are calibrated on regular basis. The maximum time between calibrations is one year or what is recommended by the manufacturer, whichever is less. All test equipment calibrations are traceable to the Korea Research Institute of Standards and Science (KRISS), therefore, all test data recorded in this report is traceable to KRISS.

1.8 Test Facility

The measurement facility is located at 386-1, Ho-dong, Cheoin-gu, Yongin-si, Gyeonggi-do, 449-100, Korea. The sites are constructed in conformance with the requirements of ANSI C63.7, ANSI C63.4 and CISPR Publication 22.

1.9 Measurement Procedure

Preliminary AC power line conducted emissions tests were performed shielded room. To find worst mode, several typical mode and typical cable position were tested. Final AC power line conducted emissions test was performed shielded room. (location is same as Preliminary test)
Based on the preliminary tests of the EUT, final test was proceeded worst case test mode and cable configuration.

Preliminary radiated emissions test were performed anechoic chamber (Distance of antenna and EUT was 3 m). To find worst mode, several typical mode and typical cable position were tested and peak level and frequency were recorded.




Final radiated emissions test was performed Open Area Test Site. Based on the preliminary tests of the EUT, final test was proceeded worst case test mode and cable configuration.

* Measurement procedures was In accordance with ANSI C63.4-2003 7.2.3, 7.2.4, 8.3.1.1, 8.3.1.2

Note #1: Comparing this test result and FCC Part 18 limits, the emission of this product can also meet the FCC Part 18.305 Field Strength Limits and 18.307 Conduction Limits.

Note #2: These results are deemed satisfactory evidence of compliance with ICES-003 of The Canadian Interference-Causing Equipment Regulations.

1.10 Laboratory Accreditations and Listings

Country	Agency	Scope of Accreditation	Logo
USA	FCC	3 m & 10 m OATS, 3 m & 10 m SAC and Conducted Test Site to perform FCC Part 15/18 measurements	 805871
JAPAN	VCCI	10 m OATS, 3 m & 10 m SAC and Conducted Test Site	 R-948, C-986, T-1843, R-3627, G-387
KOREA	KCC	EMI (10 m OATS, 10 m SAC and Conducted Test Site) EMS (ESD, RS, EFT/Burst, Surge, CS, Magnetic, Dips and Interruptions)	 No. 51, KR0025

1.11 Measurement Uncertainty

Compliance of the product is based on the measured value.

However, the measurement uncertainty is included for information purposes.

The measurement uncertainties given below are based on a standard uncertainty multiplied by a coverage factor of $k=2$, providing a level of confidence of approximately 95 %.

Measurement Type	Frequency Range	Expanded Uncertainty
Conducted Emission	150 kHz to 30 MHz	± 2.48 dB (C.L.: Approx. 95 %, $k=2$)
Radiated Emission	30 MHz to 1000 MHz	± 3.70 dB (C.L.: Approx. 95 %, $k=2$)



CTK Co., Ltd.
The Prime Leader of Global Regulatory Certification

CTK Co., Ltd.

386-1, Ho-dong, Cheoin-gu, Yongin-si, Gyeonggi-do, 449-100, Korea
Tel: +82-31-339-9970 Fax: +82-31-339-9855
www.e-ctk.com

2.0 Emissions Test Regulations

The emissions tests were performed according to following regulations:

- | | | |
|--|--|--|
| <input type="checkbox"/> EN 61000-6-3:2007 | | |
| <input type="checkbox"/> EN 61000-6-4:2007 | | |
| <input type="checkbox"/> EN 55011:2007 +A2:2007 | <input type="checkbox"/> Group 1
<input type="checkbox"/> Class A | <input type="checkbox"/> Group 2
<input type="checkbox"/> Class B |
| <input type="checkbox"/> EN 55013:2001 +A1:2003 +A2:2006 | | |
| <input type="checkbox"/> EN 55014-1:2006 | | |
| <input type="checkbox"/> EN 55014-1:2006 +A1:2009 | | |
| <input type="checkbox"/> EN 55015:2006 +A1:2007 +A2:2009 | | |
| <input type="checkbox"/> EN 61204-3:2000 | <input type="checkbox"/> Class A | <input type="checkbox"/> Class B |
| <input type="checkbox"/> EN 61131-2:2007 | | |
| <input type="checkbox"/> EN 61326-1:2006 | <input type="checkbox"/> Class A | <input type="checkbox"/> Class B |
| <input type="checkbox"/> EN 55022:2006 +A1:2007 | <input type="checkbox"/> Class A | <input type="checkbox"/> Class B |
| <input type="checkbox"/> EN 61000-3-2:2006 +A1:2009 +A2:2009 | | |
| <input type="checkbox"/> EN 61000-3-3:2008 | | |
| <input type="checkbox"/> VCCI V-3/2011.04 | <input type="checkbox"/> Class A | <input type="checkbox"/> Class B |
| <input type="checkbox"/> AS/NZS CISPR22:2009 | <input type="checkbox"/> Class A | <input type="checkbox"/> Class B |
| <input checked="" type="checkbox"/> FCC Part 15 Subpart B | <input type="checkbox"/> Class A | <input checked="" type="checkbox"/> Class B |
| <input type="checkbox"/> CISPR 22:2006 | <input type="checkbox"/> Class A | <input type="checkbox"/> Class B |



CTK Co., Ltd.
The Prime Leader of Global Regulatory Certification

CTK Co., Ltd.

386-1, Ho-dong, Cheoin-gu, Yongin-si, Gyeonggi-do, 449-100, Korea
Tel: +82-31-339-9970 Fax: +82-31-339-9855
www.e-ctk.com

2.1 Conducted Voltage Emissions

Test Date

April 23, 2012

Test Location

Shielded Room

Test Equipment

	Name of Equipment	Manufacturer	Model No.	Serial No.	Due Date
<input checked="" type="checkbox"/>	EMI TEST RECEIVER	Rohde & Schwarz	ESCI3	100032	2013-02-09
<input checked="" type="checkbox"/>	LISN	Rohde & Schwarz	ENV216	101235	2012-08-18
<input checked="" type="checkbox"/>	LISN	Rohde & Schwarz	ENV216	101236	2012-08-06
<input type="checkbox"/>	EMI Test Receiver	Rohde & Schwarz	ESHS30	828144/002	2013-02-09
<input type="checkbox"/>	LISN	Rohde & Schwarz	ENV216	101150	2013-02-09
<input type="checkbox"/>	LISN	Rohde & Schwarz	ENV216	101151	2012-03-09

Frequency Range of Measurement

150 kHz to 30 MHz

Instrument Settings

IF Band Width: 9 kHz

Test Results

The requirements are: ☒ MET ☐ NOT MET ☐ NOT APPLICABLE

Frequency (MHz)	Measured Data (dBμV)	Margin (dB)	Remark
0.577 500	46.5	9.5	Quasi-peak (Battery Charging Mode: Battery Charger 1)

Remarks

See Appendix A for test data.



CTK Co., Ltd.
The Prime Leader of Global Regulatory Certification

CTK Co., Ltd.

386-1, Ho-dong, Cheoin-gu, Yongin-si, Gyeonggi-do, 449-100, Korea

Tel: +82-31-339-9970 Fax: +82-31-339-9855

www.e-ctk.com

2.2 Radiated Electric Field Emissions

Test Date

April 24, 2012

Test Location

Testing was performed at a test distance of:

- ☐ 10 m OATS ☐ 3 m OATS
☒ 10 m SAC ☐ 3 m SAC

Test Equipment

	Name of Equipment	Manufacturer	Model No.	Serial No.	Due Date
<input checked="" type="checkbox"/>	EMI TEST RECEIVER	Rohde & Schwarz	ESCI7	100814	2012-12-13
<input checked="" type="checkbox"/>	ULTRA Broadband Antenna	Rohde & Schwarz	HL562	100203	2013-07-05
<input checked="" type="checkbox"/>	AMPLIFIER	Sonoma Instrument Co.	310	291721	2013-03-27
<input type="checkbox"/>	EMI TEST RECEIVER	Rohde & Schwarz	ESCI7	100816	2012-12-16
<input type="checkbox"/>	Double Ridged Guide Antenna	ETS-Lindgren	3115	00078894	2013-03-22
<input type="checkbox"/>	PREAMPLIFIER	Agilent Technologies	8449B	3008A02307	2012-11-17

Frequency Range of Measurement

- ☒ 30 MHz to 1 GHz
☐ 1 GHz to _ GHz

Instrument Settings

- ☒ IF Band Width: 120 kHz
☐ IF Band Width: 1 MHz

Test Results

The requirements are: ☒ MET ☐ NOT MET ☐ NOT APPLICABLE

Frequency (MHz)	Measured Data (dB μ V/m)	Margin (dB)	Remark
69.406	31.8	8.2	Quasi-peak (Serial Printing Mode)

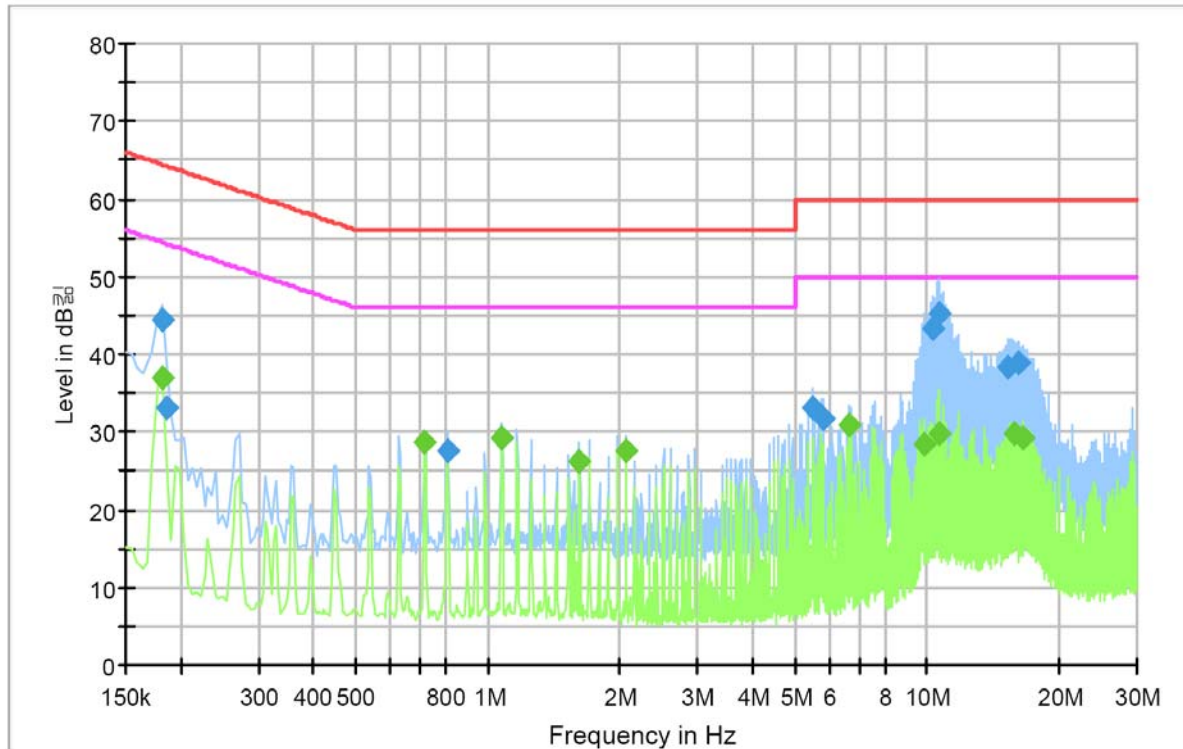
Remarks

See Appendix A for test data.

APPENDIX A – TEST DATA

Conducted Voltage Emissions

[USB Printing Mode: HOT]



Final Result 1

Frequency (MHz)	QuasiPeak (dBμV)	Meas. Time (ms)	Bandwidth (kHz)	Filter	Line	Corr. (dB)	Margin (dB)	Limit (dBμV)
0.181500	44.5	1000.0	9.000	On	L1	10.0	19.9	64.4
0.186000	33.1	1000.0	9.000	On	L1	10.0	31.1	64.2
0.807000	27.7	1000.0	9.000	On	L1	10.1	28.3	56.0
1.077000	29.2	1000.0	9.000	On	L1	10.0	26.8	56.0
5.473500	33.1	1000.0	9.000	On	L1	9.8	26.9	60.0
5.829000	31.8	1000.0	9.000	On	L1	9.8	28.2	60.0
10.297500	43.3	1000.0	9.000	On	L1	9.7	16.7	60.0
10.599000	45.1	1000.0	9.000	On	L1	9.7	14.9	60.0
15.346500	38.5	1000.0	9.000	On	L1	9.8	21.5	60.0
16.246500	39.0	1000.0	9.000	On	L1	9.8	21.0	60.0

Final Result 2

Frequency (MHz)	Average (dBμV)	Meas. Time (ms)	Bandwidth (kHz)	Filter	Line	Corr. (dB)	Margin (dB)	Limit (dBμV)
0.181500	37.1	1000.0	9.000	On	L1	10.0	17.3	54.4
0.717000	28.6	1000.0	9.000	On	L1	10.1	17.4	46.0
1.077000	29.2	1000.0	9.000	On	L1	10.0	16.8	46.0
1.617000	26.3	1000.0	9.000	On	L1	9.9	19.7	46.0
2.062500	27.6	1000.0	9.000	On	L1	9.9	18.4	46.0
6.639000	30.8	1000.0	9.000	On	L1	9.7	19.2	50.0
9.798000	28.5	1000.0	9.000	On	L1	9.7	21.5	50.0
10.599000	29.7	1000.0	9.000	On	L1	9.7	20.3	50.0
15.796500	29.8	1000.0	9.000	On	L1	9.8	20.2	50.0
16.597500	29.3	1000.0	9.000	On	L1	9.8	20.7	50.0



CTK Co., Ltd.
The Prime Leader of Global Regulatory Certification

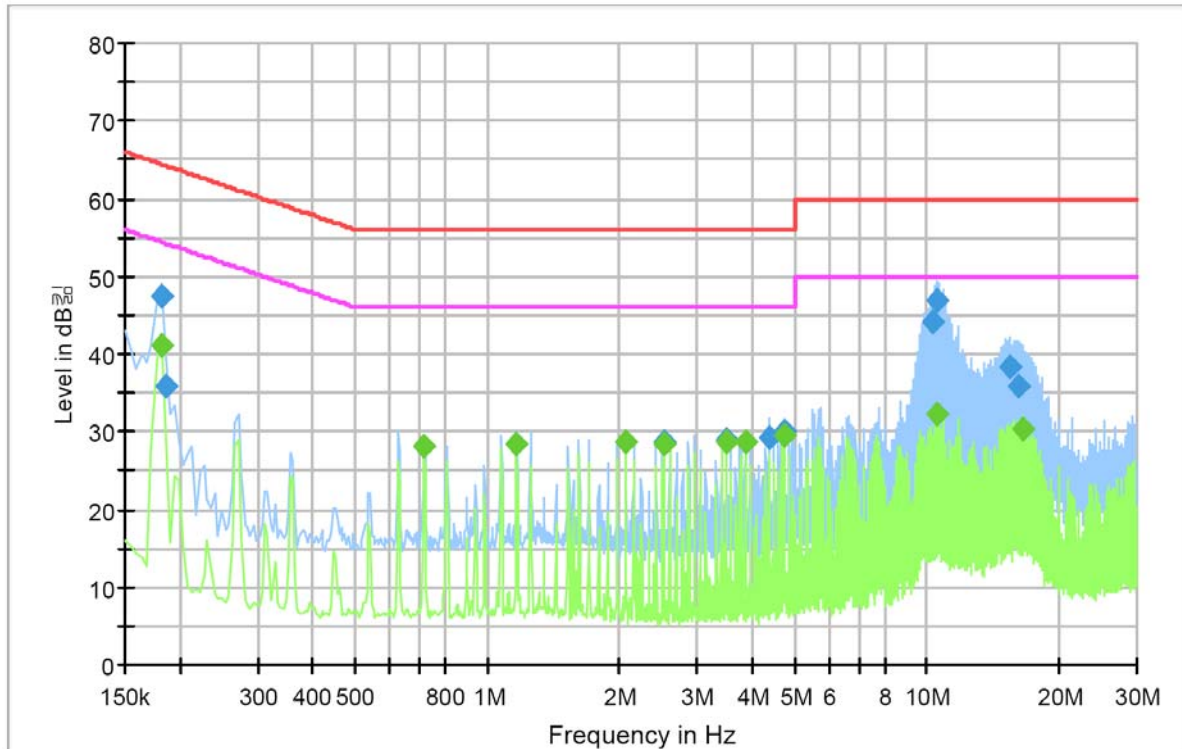
CTK Co., Ltd.

386-1, Ho-dong, Cheoin-gu, Yongin-si, Gyeonggi-do, 449-100, Korea

Tel: +82-31-339-9970 Fax: +82-31-339-9855

www.e-ctk.com

[USB Printing Mode: NEUTRAL]



Final Result 1

Frequency (MHz)	QuasiPeak (dBm)	Meas. Time (ms)	Bandwidth (kHz)	Filter	Line	Corr. (dB)	Margin (dB)	Limit (dBm)
0.181500	47.4	1000.0	9.000	On	N	10.0	17.1	64.4
0.186000	35.9	1000.0	9.000	On	N	10.1	28.3	64.2
2.512500	28.6	1000.0	9.000	On	N	9.9	27.4	56.0
3.498000	29.0	1000.0	9.000	On	N	9.8	27.0	56.0
4.393500	29.3	1000.0	9.000	On	N	9.8	26.7	56.0
4.753500	30.0	1000.0	9.000	On	N	9.8	26.0	56.0
10.252500	44.1	1000.0	9.000	On	N	9.7	15.9	60.0
10.500000	46.8	1000.0	9.000	On	N	9.7	13.2	60.0
15.400500	38.4	1000.0	9.000	On	N	9.8	21.6	60.0
16.152000	36.0	1000.0	9.000	On	N	9.8	24.0	60.0

Final Result 2

Frequency (MHz)	Average (dBm)	Meas. Time (ms)	Bandwidth (kHz)	Filter	Line	Corr. (dB)	Margin (dB)	Limit (dBm)
0.181500	41.0	1000.0	9.000	On	N	10.0	13.4	54.4
0.717000	28.2	1000.0	9.000	On	N	10.1	17.8	46.0
1.167000	28.3	1000.0	9.000	On	N	10.0	17.7	46.0
2.062500	28.6	1000.0	9.000	On	N	9.9	17.4	46.0
2.512500	28.4	1000.0	9.000	On	N	9.9	17.6	46.0
3.498000	28.8	1000.0	9.000	On	N	9.8	17.2	46.0
3.858000	28.6	1000.0	9.000	On	N	9.8	17.4	46.0
4.753500	29.6	1000.0	9.000	On	N	9.8	16.4	46.0
10.500000	32.3	1000.0	9.000	On	N	9.7	17.7	50.0
16.449000	30.3	1000.0	9.000	On	N	9.8	19.7	50.0



CTK Co., Ltd.
The Prime Leader of Global Regulatory Certification

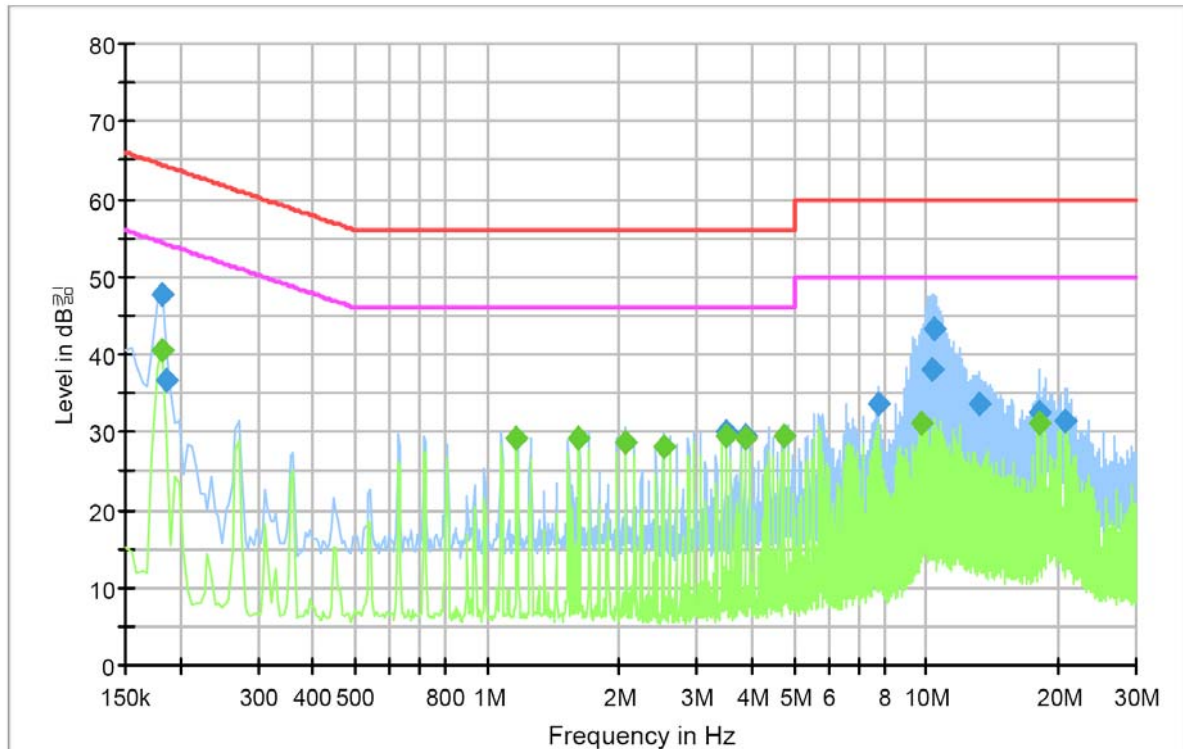
CTK Co., Ltd.

386-1, Ho-dong, Cheoin-gu, Yongin-si, Gyeonggi-do, 449-100, Korea

Tel: +82-31-339-9970 Fax: +82-31-339-9855

www.e-ctk.com

[Serial Printing Mode: HOT]



Final Result 1

Frequency (MHz)	QuasiPeak (dBm)	Meas. Time (ms)	Bandwidth (kHz)	Filter	Line	Corr. (dB)	Margin (dB)	Limit (dBm)
0.181500	47.7	1000.0	9.000	On	L1	10.0	16.7	64.4
0.186000	36.7	1000.0	9.000	On	L1	10.0	27.5	64.2
3.502500	30.0	1000.0	9.000	On	L1	9.8	26.0	56.0
3.862500	29.6	1000.0	9.000	On	L1	9.8	26.4	56.0
7.813500	33.6	1000.0	9.000	On	L1	9.7	26.4	60.0
10.342500	38.1	1000.0	9.000	On	L1	9.7	21.9	60.0
10.441500	43.2	1000.0	9.000	On	L1	9.7	16.8	60.0
13.249500	33.7	1000.0	9.000	On	L1	9.8	26.3	60.0
18.123000	32.5	1000.0	9.000	On	L1	9.8	27.5	60.0
20.629500	31.4	1000.0	9.000	On	L1	9.8	28.6	60.0

Final Result 2

Frequency (MHz)	Average (dBm)	Meas. Time (ms)	Bandwidth (kHz)	Filter	Line	Corr. (dB)	Margin (dB)	Limit (dBm)
0.181500	40.4	1000.0	9.000	On	L1	10.0	14.0	54.4
1.167000	29.2	1000.0	9.000	On	L1	10.0	16.8	46.0
1.617000	29.4	1000.0	9.000	On	L1	9.9	16.6	46.0
2.067000	28.8	1000.0	9.000	On	L1	9.9	17.2	46.0
2.512500	28.1	1000.0	9.000	On	L1	9.9	17.9	46.0
3.502500	29.6	1000.0	9.000	On	L1	9.8	16.4	46.0
3.862500	29.2	1000.0	9.000	On	L1	9.8	16.8	46.0
4.758000	29.5	1000.0	9.000	On	L1	9.8	16.5	46.0
9.789000	31.2	1000.0	9.000	On	L1	9.7	18.8	50.0
18.123000	31.2	1000.0	9.000	On	L1	9.8	18.8	50.0



CTK Co., Ltd.
The Prime Leader of Global Regulatory Certification

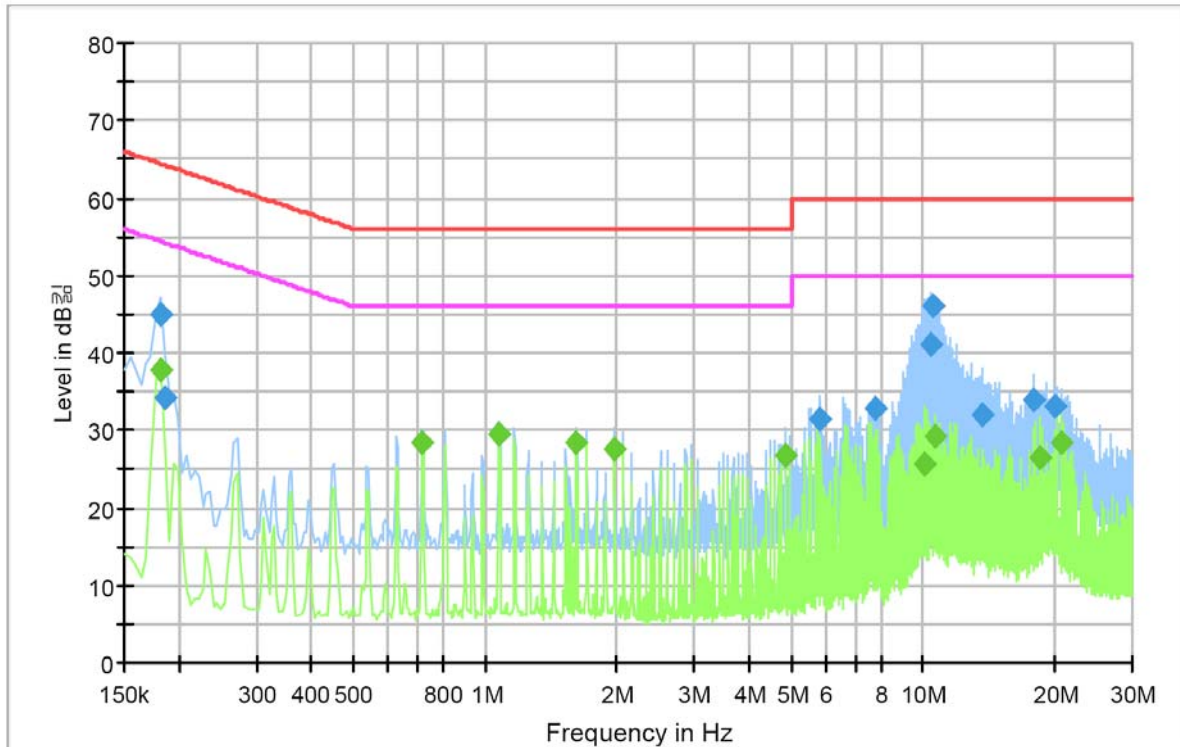
CTK Co., Ltd.

386-1, Ho-dong, Cheoin-gu, Yongin-si, Gyeonggi-do, 449-100, Korea

Tel: +82-31-339-9970 Fax: +82-31-339-9855

www.e-ctk.com

[Serial Printing Mode: NEUTRAL]



Final Result 1

Frequency (MHz)	QuasiPeak (dBm)	Meas. Time (ms)	Bandwidth (kHz)	Filter	Line	Corr. (dB)	Margin (dB)	Limit (dBm)
0.181500	45.0	1000.0	9.000	On	N	10.0	19.4	64.4
0.186000	34.1	1000.0	9.000	On	N	10.1	30.1	64.2
1.077000	29.4	1000.0	9.000	On	N	10.0	26.6	56.0
5.838000	31.6	1000.0	9.000	On	N	9.8	28.4	60.0
7.813500	32.7	1000.0	9.000	On	N	9.7	27.3	60.0
10.387500	41.2	1000.0	9.000	On	N	9.7	18.8	60.0
10.482000	46.0	1000.0	9.000	On	N	9.7	14.0	60.0
13.645500	31.9	1000.0	9.000	On	N	9.8	28.1	60.0
17.808000	33.9	1000.0	9.000	On	N	9.9	26.1	60.0
19.914000	33.0	1000.0	9.000	On	N	9.9	27.0	60.0

Final Result 2

Frequency (MHz)	Average (dBm)	Meas. Time (ms)	Bandwidth (kHz)	Filter	Line	Corr. (dB)	Margin (dB)	Limit (dBm)
0.181500	37.8	1000.0	9.000	On	N	10.0	16.6	54.4
0.717000	28.5	1000.0	9.000	On	N	10.1	17.5	46.0
1.077000	29.5	1000.0	9.000	On	N	10.0	16.5	46.0
1.617000	28.3	1000.0	9.000	On	N	9.9	17.7	46.0
1.977000	27.6	1000.0	9.000	On	N	9.9	18.4	46.0
4.848000	26.9	1000.0	9.000	On	N	9.8	19.1	46.0
10.036500	25.6	1000.0	9.000	On	N	9.7	24.4	50.0
10.689000	29.4	1000.0	9.000	On	N	9.7	20.6	50.0
18.438000	26.5	1000.0	9.000	On	N	9.9	23.5	50.0
20.625000	28.4	1000.0	9.000	On	N	9.9	21.6	50.0



CTK Co., Ltd.
The Prime Leader of Global Regulatory Certification

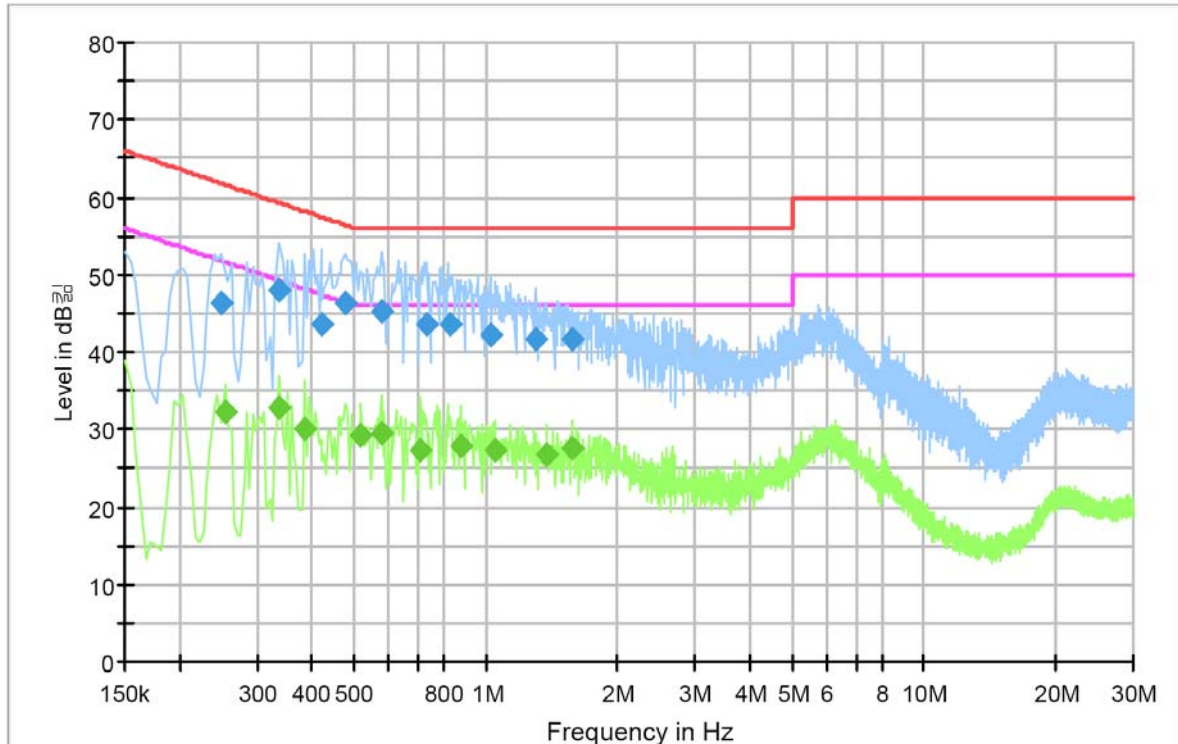
CTK Co., Ltd.

386-1, Ho-dong, Cheoin-gu, Yongin-si, Gyeonggi-do, 449-100, Korea

Tel: +82-31-339-9970 Fax: +82-31-339-9855

www.e-ctk.com

[Battery Charging Mode (Battery Charger 1): HOT]



Final Result 1

Frequency (MHz)	QuasiPeak (dBμV)	Meas. Time (ms)	Bandwidth (kHz)	Filter	Line	Corr. (dB)	Margin (dB)	Limit (dBμV)
0.249000	46.4	1000.0	9.000	On	L1	10.1	15.4	61.8
0.339000	48.1	1000.0	9.000	On	L1	10.0	11.1	59.2
0.420000	43.6	1000.0	9.000	On	L1	10.0	13.9	57.4
0.478500	46.3	1000.0	9.000	On	L1	10.0	10.1	56.4
0.577500	45.3	1000.0	9.000	On	L1	10.0	10.7	56.0
0.730500	43.6	1000.0	9.000	On	L1	10.1	12.4	56.0
0.825000	43.7	1000.0	9.000	On	L1	10.1	12.3	56.0
1.023000	42.2	1000.0	9.000	On	L1	10.0	13.8	56.0
1.297500	41.6	1000.0	9.000	On	L1	10.0	14.4	56.0
1.567500	41.7	1000.0	9.000	On	L1	9.9	14.3	56.0

Final Result 2

Frequency (MHz)	Average (dBμV)	Meas. Time (ms)	Bandwidth (kHz)	Filter	Line	Corr. (dB)	Margin (dB)	Limit (dBμV)
0.253500	32.3	1000.0	9.000	On	L1	10.1	19.3	51.6
0.339000	32.8	1000.0	9.000	On	L1	10.0	16.4	49.2
0.384000	29.9	1000.0	9.000	On	L1	10.0	18.3	48.2
0.519000	29.4	1000.0	9.000	On	L1	10.0	16.6	46.0
0.577500	29.6	1000.0	9.000	On	L1	10.0	16.4	46.0
0.708000	27.3	1000.0	9.000	On	L1	10.1	18.7	46.0
0.874500	28.0	1000.0	9.000	On	L1	10.0	18.0	46.0
1.050000	27.4	1000.0	9.000	On	L1	10.0	18.6	46.0
1.378500	26.8	1000.0	9.000	On	L1	10.0	19.2	46.0
1.567500	27.6	1000.0	9.000	On	L1	9.9	18.4	46.0



CTK Co., Ltd.

The Prime Leader of Global Regulatory Certification

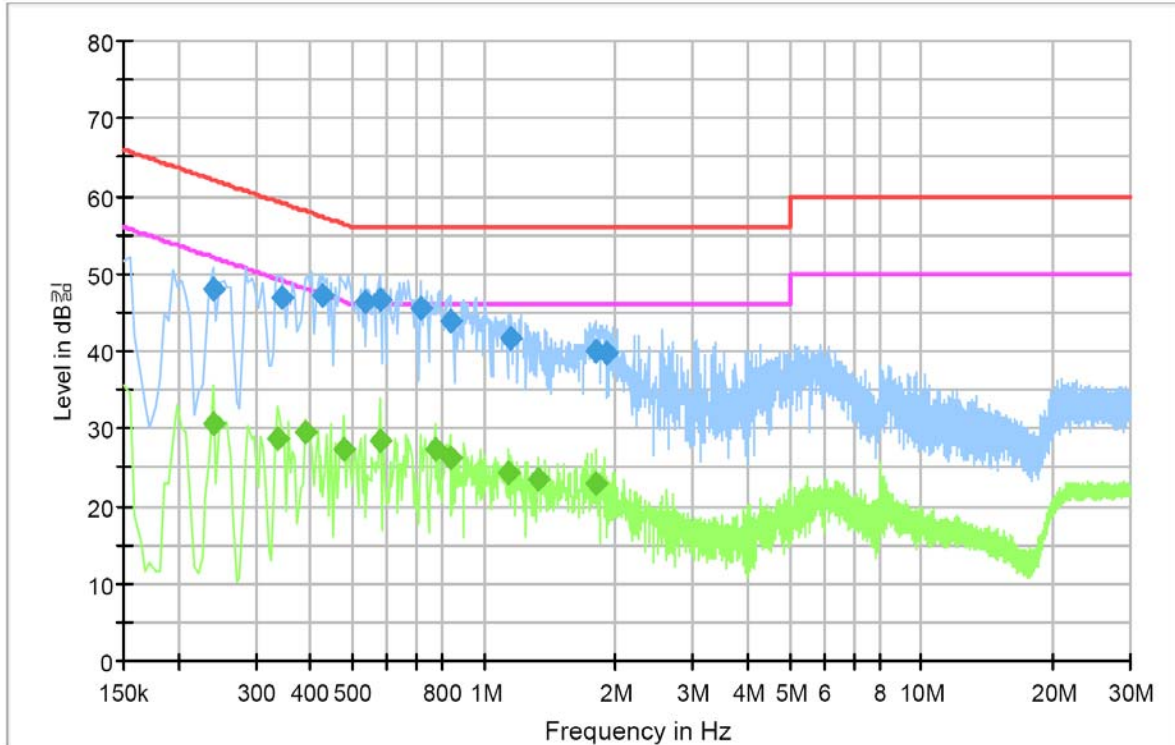
CTK Co., Ltd.

386-1, Ho-dong, Cheoin-gu, Yongin-si, Gyeonggi-do, 449-100, Korea

Tel: +82-31-339-9970 Fax: +82-31-339-9855

www.e-ctk.com

[Battery Charging Mode (Battery Charger 1): NEUTRAL]



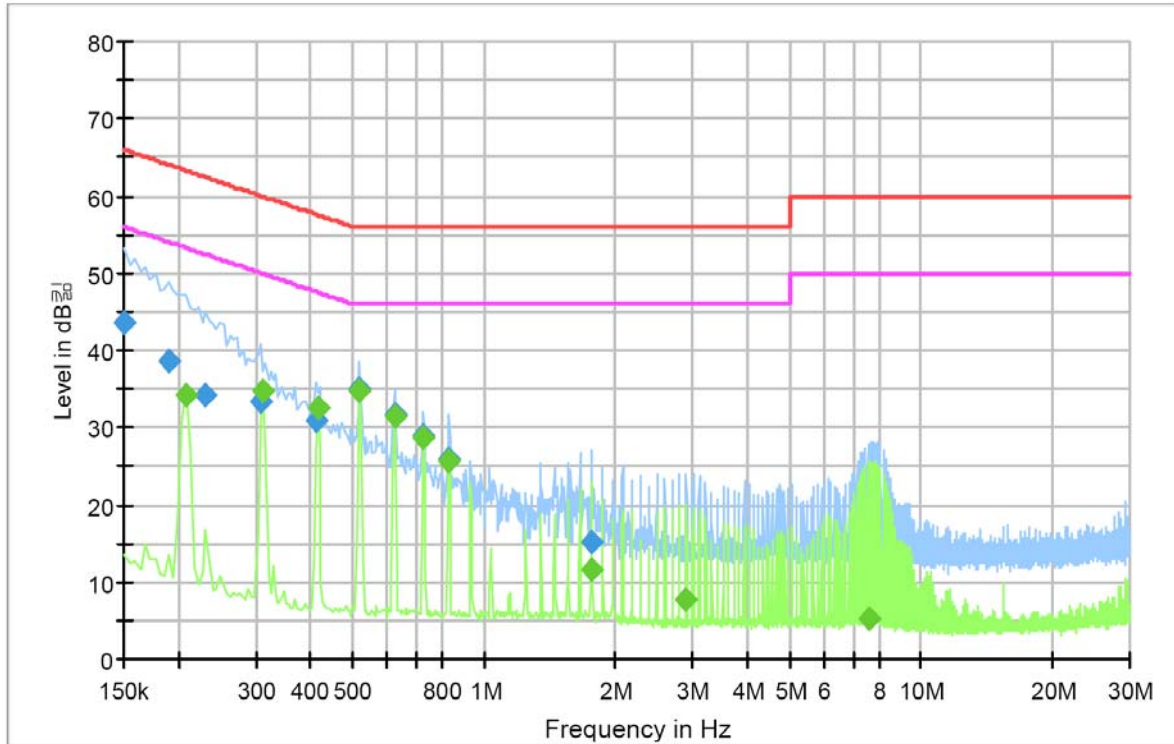
Final Result 1

Frequency (MHz)	QuasiPeak (dB _{μV})	Meas. Time (ms)	Bandwidth (kHz)	Filter	Line	Corr. (dB)	Margin (dB)	Limit (dB _{μV})
0.240000	48.0	1000.0	9.000	On	N	10.1	14.1	62.1
0.343500	46.8	1000.0	9.000	On	N	10.0	12.3	59.1
0.429000	47.2	1000.0	9.000	On	N	9.9	10.0	57.3
0.532500	46.4	1000.0	9.000	On	N	9.9	9.6	56.0
0.577500	46.5	1000.0	9.000	On	N	10.0	9.5	56.0
0.712500	45.6	1000.0	9.000	On	N	10.1	10.4	56.0
0.834000	43.9	1000.0	9.000	On	N	10.1	12.1	56.0
1.153500	41.5	1000.0	9.000	On	N	10.0	14.5	56.0
1.806000	40.0	1000.0	9.000	On	N	9.9	16.0	56.0
1.909500	39.8	1000.0	9.000	On	N	9.9	16.2	56.0

Final Result 2

Frequency (MHz)	Average (dB _{μV})	Meas. Time (ms)	Bandwidth (kHz)	Filter	Line	Corr. (dB)	Margin (dB)	Limit (dB _{μV})
0.240000	30.7	1000.0	9.000	On	N	10.1	21.4	52.1
0.339000	28.6	1000.0	9.000	On	N	10.0	20.6	49.2
0.388500	29.5	1000.0	9.000	On	N	10.0	18.6	48.1
0.478500	27.2	1000.0	9.000	On	N	9.9	19.1	46.4
0.577500	28.4	1000.0	9.000	On	N	10.0	17.6	46.0
0.771000	27.4	1000.0	9.000	On	N	10.1	18.6	46.0
0.834000	26.2	1000.0	9.000	On	N	10.1	19.8	46.0
1.135500	24.3	1000.0	9.000	On	N	10.0	21.7	46.0
1.329000	23.5	1000.0	9.000	On	N	10.0	22.6	46.0
1.806000	22.9	1000.0	9.000	On	N	9.9	23.1	46.0

[Battery Charging Mode (Battery Charger 2): HOT]



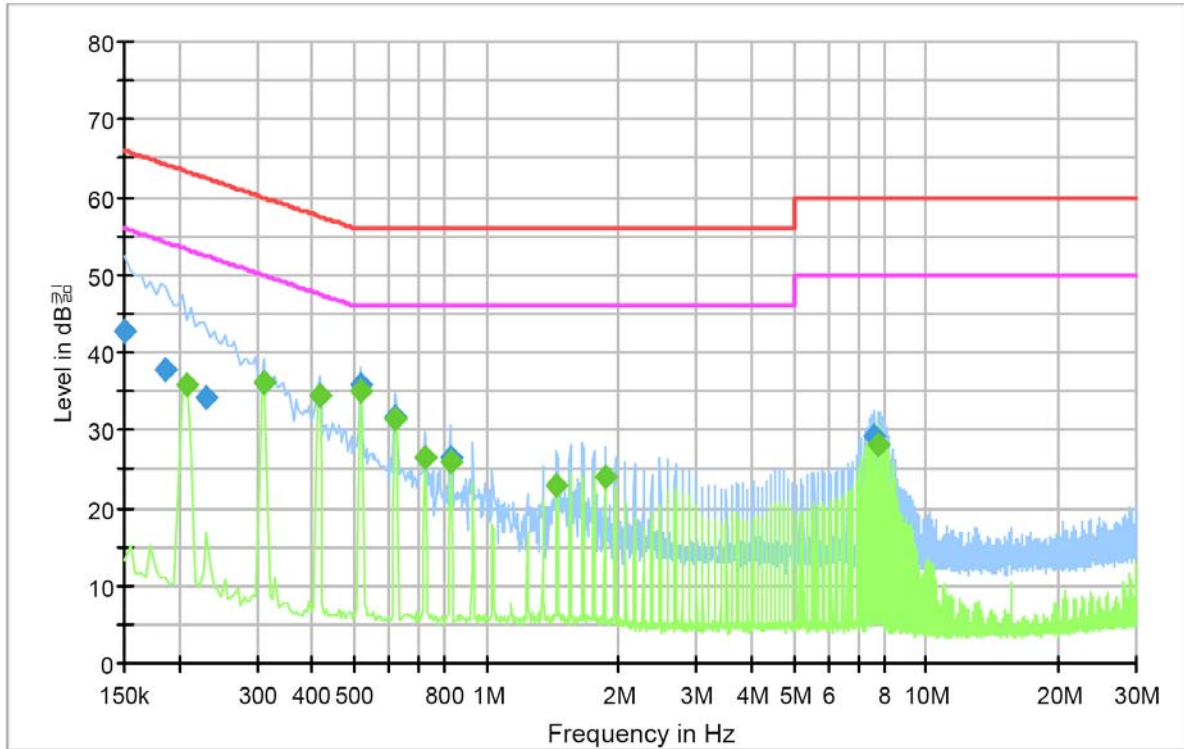
Final Result 1

Frequency (MHz)	QuasiPeak (dBμV)	Meas. Time (ms)	Bandwidth (kHz)	Filter	Line	Corr. (dB)	Margin (dB)	Limit (dBμV)
0.150000	43.7	1000.0	9.000	On	L1	10.2	22.3	66.0
0.190500	38.5	1000.0	9.000	On	L1	10.0	25.5	64.0
0.231000	34.1	1000.0	9.000	On	L1	10.1	28.3	62.4
0.307500	33.3	1000.0	9.000	On	L1	10.1	26.7	60.0
0.411000	30.8	1000.0	9.000	On	L1	10.0	26.8	57.6
0.519000	35.0	1000.0	9.000	On	L1	10.0	21.0	56.0
0.622500	31.9	1000.0	9.000	On	L1	10.1	24.1	56.0
0.726000	29.1	1000.0	9.000	On	L1	10.1	26.9	56.0
0.829500	26.0	1000.0	9.000	On	L1	10.1	30.0	56.0
1.765500	15.2	1000.0	9.000	On	L1	9.9	40.8	56.0

Final Result 2

Frequency (MHz)	Average (dBμV)	Meas. Time (ms)	Bandwidth (kHz)	Filter	Line	Corr. (dB)	Margin (dB)	Limit (dBμV)
0.208500	34.2	1000.0	9.000	On	L1	10.1	19.0	53.3
0.312000	34.7	1000.0	9.000	On	L1	10.1	15.2	49.9
0.415500	32.5	1000.0	9.000	On	L1	10.0	15.1	47.5
0.519000	34.8	1000.0	9.000	On	L1	10.0	11.2	46.0
0.622500	31.4	1000.0	9.000	On	L1	10.1	14.6	46.0
0.726000	28.6	1000.0	9.000	On	L1	10.1	17.4	46.0
0.829500	25.7	1000.0	9.000	On	L1	10.1	20.3	46.0
1.765500	11.5	1000.0	9.000	On	L1	9.9	34.5	46.0
2.904000	7.6	1000.0	9.000	On	L1	9.9	38.4	46.0
7.566000	5.4	1000.0	9.000	On	L1	9.7	44.6	50.0

[Battery Charging Mode (Battery Charger 2): NEUTRAL]



Final Result 1

Frequency (MHz)	QuasiPeak (dBμV)	Meas. Time (ms)	Bandwidth (kHz)	Filter	Line	Corr. (dB)	Margin (dB)	Limit (dBμV)
0.150000	42.8	1000.0	9.000	On	N	10.2	23.2	66.0
0.186000	37.9	1000.0	9.000	On	N	10.1	26.3	64.2
0.231000	34.1	1000.0	9.000	On	N	10.2	28.3	62.4
0.312000	36.1	1000.0	9.000	On	N	10.1	23.8	59.9
0.415500	34.6	1000.0	9.000	On	N	10.0	23.0	57.5
0.514500	35.8	1000.0	9.000	On	N	9.9	20.2	56.0
0.618000	31.7	1000.0	9.000	On	N	10.0	24.3	56.0
0.726000	26.6	1000.0	9.000	On	N	10.1	29.4	56.0
0.825000	26.5	1000.0	9.000	On	N	10.1	29.5	56.0
7.647000	29.1	1000.0	9.000	On	N	9.7	30.9	60.0

Final Result 2

Frequency (MHz)	Average (dBμV)	Meas. Time (ms)	Bandwidth (kHz)	Filter	Line	Corr. (dB)	Margin (dB)	Limit (dBμV)
0.208500	35.9	1000.0	9.000	On	N	10.2	17.4	53.3
0.312000	36.1	1000.0	9.000	On	N	10.1	13.8	49.9
0.415500	34.4	1000.0	9.000	On	N	10.0	13.1	47.5
0.519000	35.0	1000.0	9.000	On	N	9.9	11.0	46.0
0.618000	31.4	1000.0	9.000	On	N	10.0	14.6	46.0
0.726000	26.4	1000.0	9.000	On	N	10.1	19.6	46.0
0.825000	26.0	1000.0	9.000	On	N	10.1	20.0	46.0
1.446000	23.0	1000.0	9.000	On	N	9.9	23.0	46.0
1.860000	23.9	1000.0	9.000	On	N	9.9	22.1	46.0
7.750500	28.2	1000.0	9.000	On	N	9.7	21.8	50.0



CTK Co., Ltd.
The Prime Leader of Global Regulatory Certification

CTK Co., Ltd.

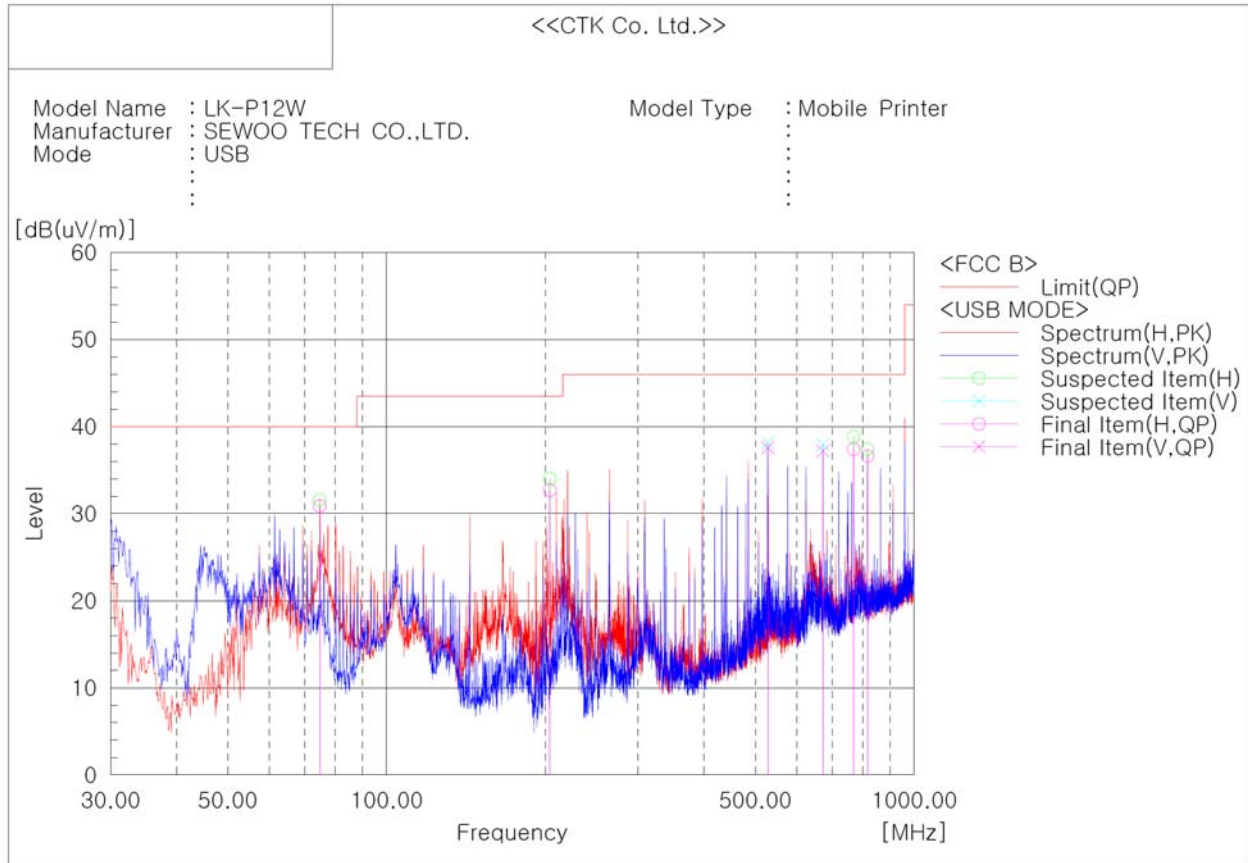
386-1, Ho-dong, Cheoin-gu, Yongin-si, Gyeonggi-do, 449-100, Korea

Tel: +82-31-339-9970 Fax: +82-31-339-9855

www.e-ctk.com

Radiated Electric Field Emissions

[USB Printing Mode]



Final Result

No.	Frequency [MHz]	(P)	Reading QP [dB(uV)]	c.f [dB(1/m)]	Result QP [dB(uV/m)]	Limit QP [dB(uV/m)]	Margin QP [dB]	Height [cm]	Angle [deg]
1	74.741	H	54.0	-23.1	30.9	40.0	9.1	309.0	252.0
2	203.994	H	54.3	-21.6	32.7	43.5	10.8	100.0	8.0
3	528.095	V	47.4	-9.8	37.6	46.0	8.4	100.0	221.0
4	672.019	V	44.5	-7.3	37.2	46.0	8.8	100.0	221.0
5	768.049	H	43.0	-5.6	37.4	46.0	8.6	100.0	157.0
6	816.064	H	41.3	-4.7	36.6	46.0	9.4	100.0	194.0



CTK Co., Ltd.
The Prime Leader of Global Regulatory Certification

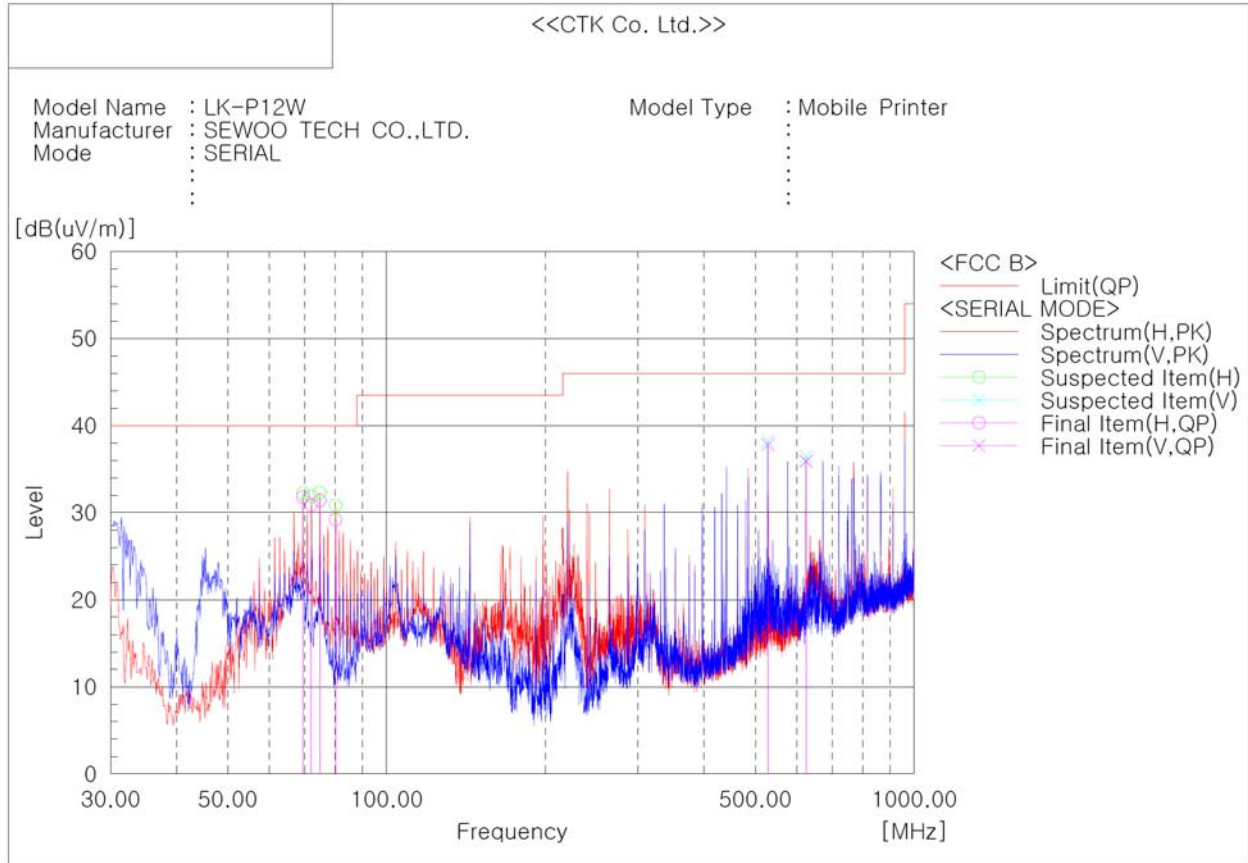
CTK Co., Ltd.

386-1, Ho-dong, Cheoin-gu, Yongin-si, Gyeonggi-do, 449-100, Korea

Tel: +82-31-339-9970 Fax: +82-31-339-9855

www.e-ctk.com

[Serial Printing Mode]



Final Result

No.	Frequency [MHz]	(P)	Reading QP [dB(uV)]	c.f [dB(1/m)]	Result QP [dB(uV/m)]	Limit QP [dB(uV/m)]	Margin QP [dB]	Height [cm]	Angle [deg]
1	69.406	H	56.2	-24.4	31.8	40.0	8.2	308.0	216.0
2	72.074	H	54.6	-23.7	30.9	40.0	9.1	308.0	253.0
3	74.741	H	54.5	-23.1	31.4	40.0	8.6	400.0	295.0
4	80.076	H	51.4	-22.2	29.2	40.0	10.8	308.0	253.0
5	528.095	V	47.6	-9.8	37.8	46.0	8.2	100.0	220.0
6	624.004	V	44.3	-8.4	35.9	46.0	10.1	100.0	220.0



CTK Co., Ltd.
The Prime Leader of Global Regulatory Certification

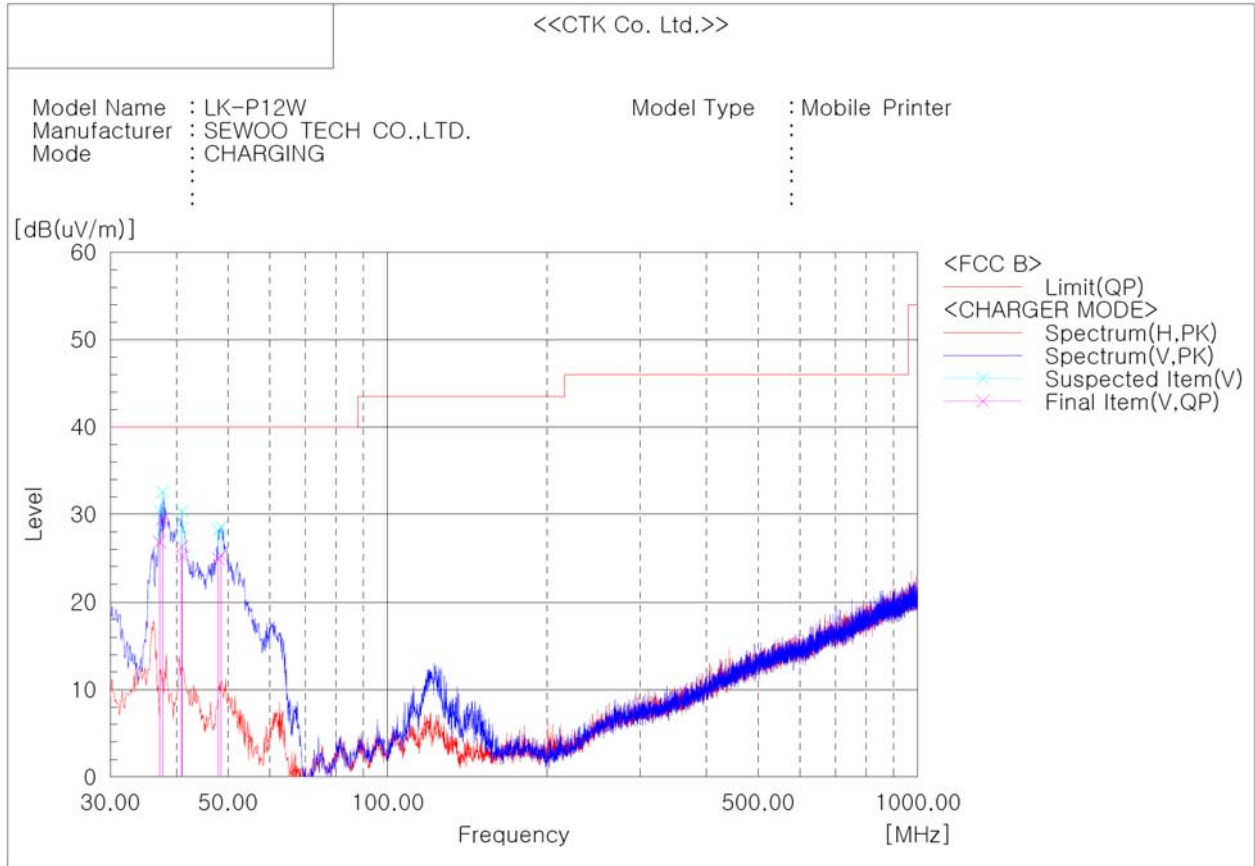
CTK Co., Ltd.

386-1, Ho-dong, Cheoin-gu, Yongin-si, Gyeonggi-do, 449-100, Korea

Tel: +82-31-339-9970 Fax: +82-31-339-9855

www.e-ctk.com

[Battery Charging Mode (Battery Charger 1)]



Final Result

No.	Frequency [MHz]	(P)	Reading QP [dB(uV)]	c.f [dB(1/m)]	Result QP [dB(uV/m)]	Limit QP [dB(uV/m)]	Margin QP [dB]	Height [cm]	Angle [deg]
1	37.154	V	42.3	-15.5	26.8	40.0	13.2	100.0	117.0
2	37.639	V	45.3	-15.8	29.5	40.0	10.5	100.0	154.0
3	40.913	V	44.0	-17.7	26.3	40.0	13.7	100.0	267.0
4	41.034	V	43.0	-17.8	25.2	40.0	14.8	100.0	192.0
5	47.945	V	46.4	-21.5	24.9	40.0	15.1	100.0	304.0
6	48.551	V	47.1	-21.8	25.3	40.0	14.7	100.0	267.0



CTK Co., Ltd.
The Prime Leader of Global Regulatory Certification

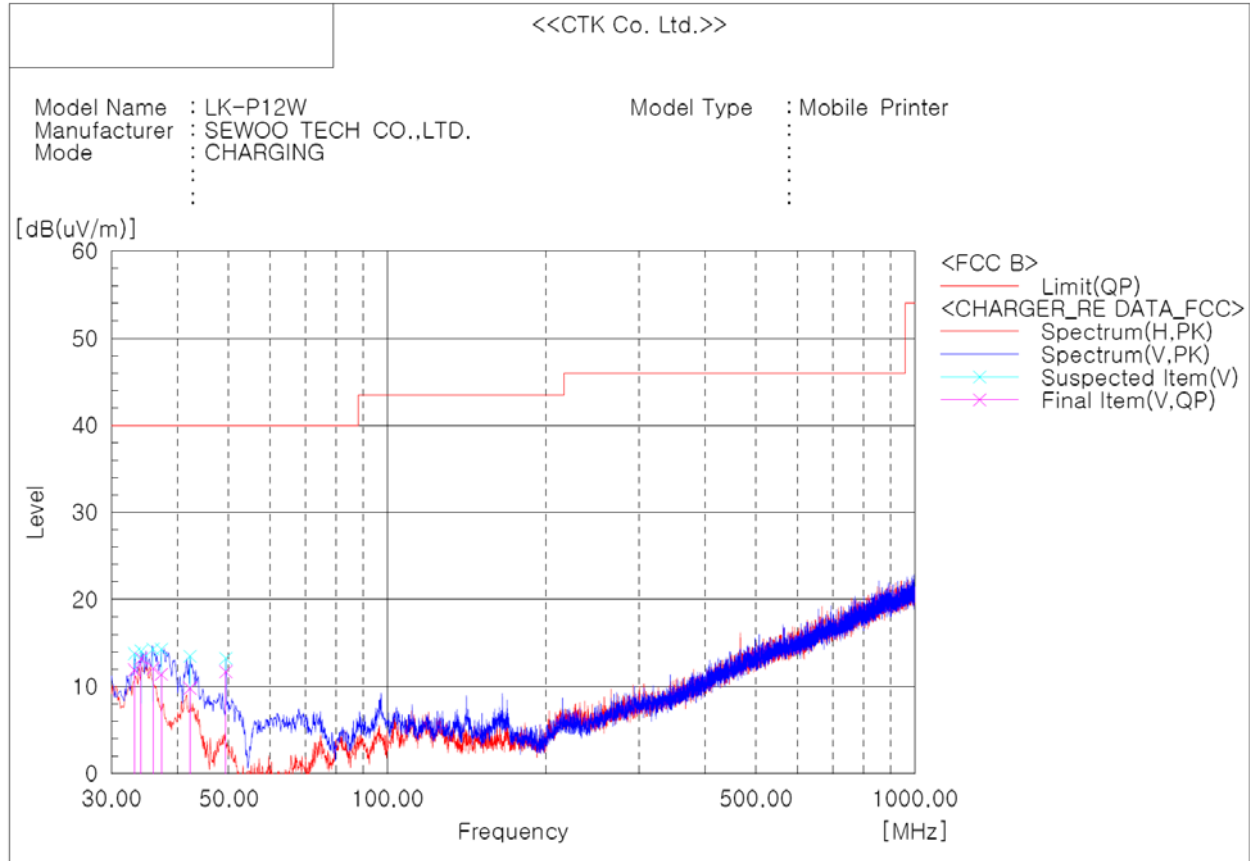
CTK Co., Ltd.

386-1, Ho-dong, Cheoin-gu, Yongin-si, Gyeonggi-do, 449-100, Korea

Tel: +82-31-339-9970 Fax: +82-31-339-9855

www.e-ctk.com

[Battery Charging Mode (Battery Charger 2)]

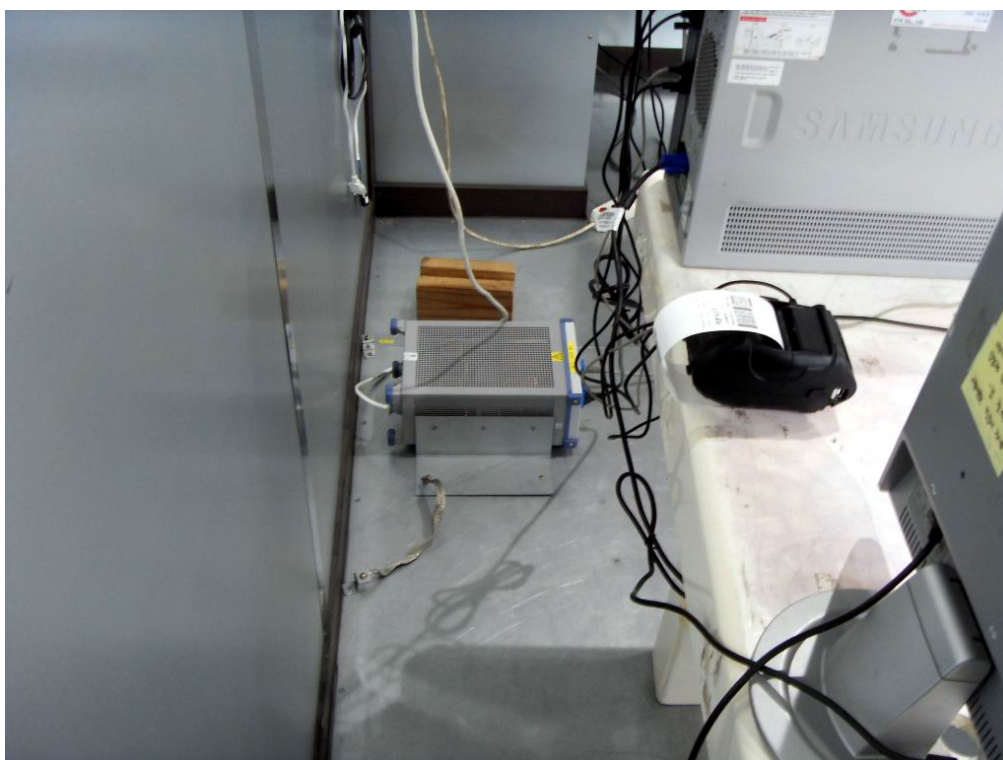


Final Result

No.	Frequency [MHz]	(P)	Reading QP [dB(uV)]	c.f [dB(1/m)]	Result QP [dB(uV/m)]	Limit QP [dB(uV/m)]	Margin QP [dB]	Height [cm]	Angle [deg]
1	49.400	V	34.1	-22.4	11.7	40.0	28.3	100.0	104.0
2	35.941	V	26.9	-14.8	12.1	40.0	27.9	100.0	253.0
3	37.275	V	27.0	-15.6	11.4	40.0	28.6	100.0	178.0
4	42.246	V	28.2	-18.4	9.8	40.0	30.2	100.0	104.0
5	34.123	V	27.2	-14.0	13.2	40.0	26.8	100.0	104.0
6	33.153	V	25.5	-13.6	11.9	40.0	28.1	400.0	318.0

APPENDIX B - Test Setup Photos and Configuration

Conducted Voltage Emissions





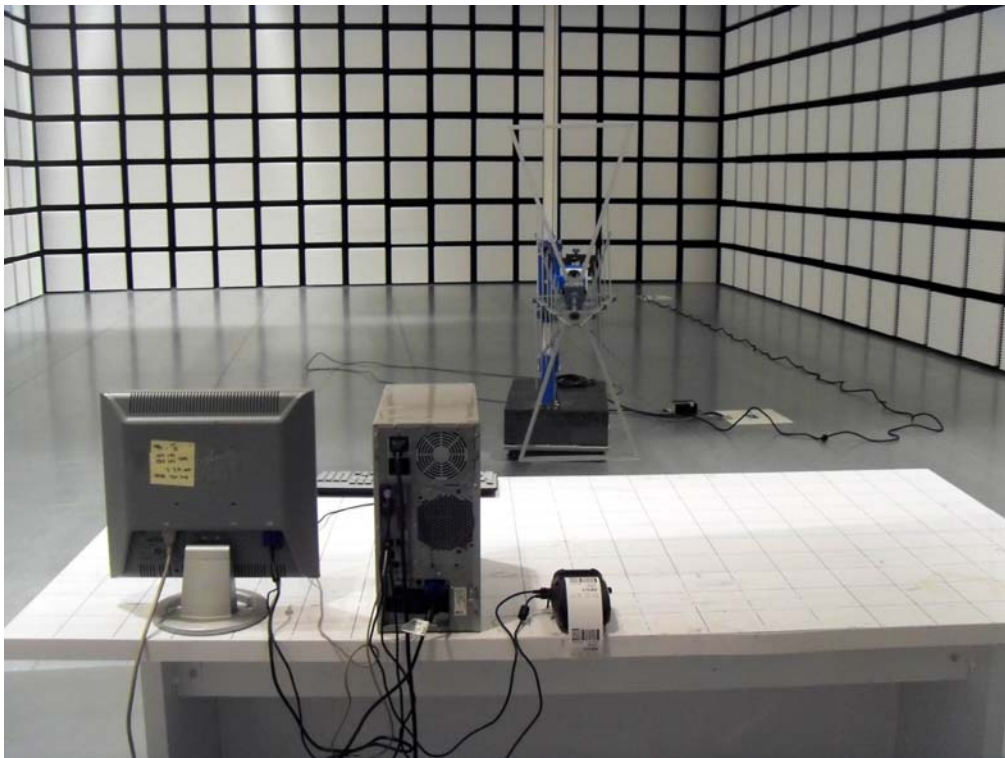
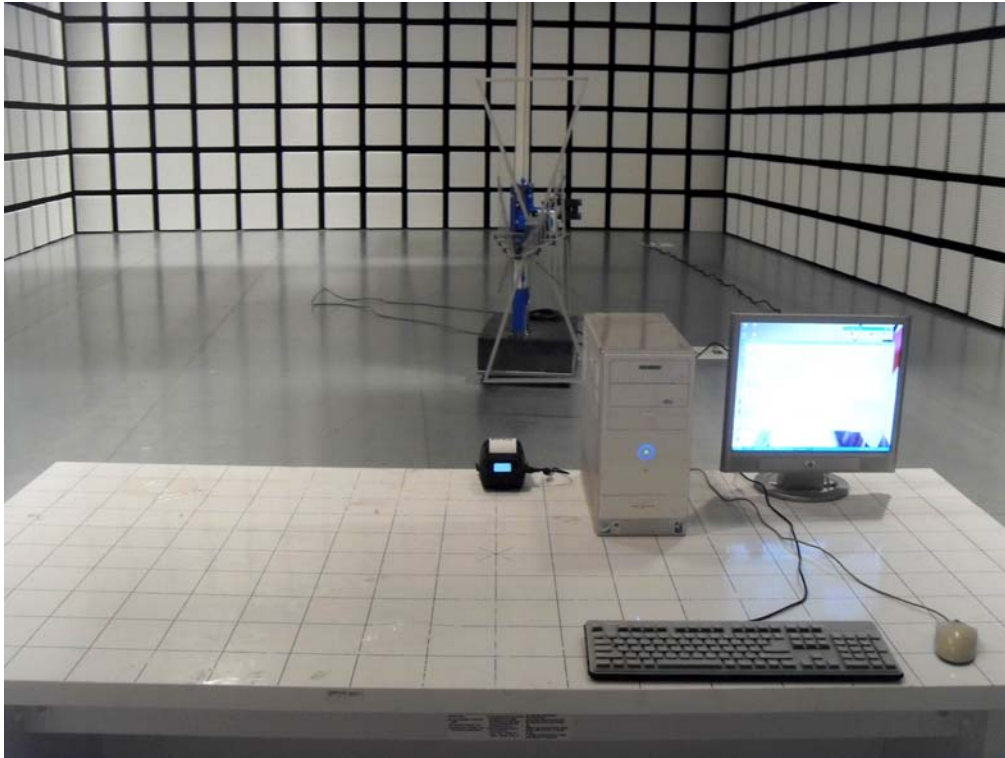
CTK Co., Ltd.

386-1, Ho-dong, Cheoin-gu, Yongin-si, Gyeonggi-do, 449-100, Korea

Tel: +82-31-339-9970 Fax: +82-31-339-9855

www.e-ctk.com

Radiated Electric Field Emissions





CTK Co., Ltd.
The Prime Leader of Global Regulatory Certification

CTK Co., Ltd.

386-1, Ho-dong, Cheoin-gu, Yongin-si, Gyeonggi-do, 449-100, Korea

Tel: +82-31-339-9970 Fax: +82-31-339-9855

www.e-ctk.com

APPENDIX C – EUT Photographs



CTK Co., Ltd.
The Prime Leader of Global Regulatory Certification

CTK Co., Ltd.

386-1, Ho-dong, Cheoin-gu, Yongin-si, Gyeonggi-do, 449-100, Korea

Tel: +82-31-339-9970 Fax: +82-31-339-9855

www.e-ctk.com





CTK Co., Ltd.
The Prime Leader of Global Regulatory Certification

CTK Co., Ltd.

386-1, Ho-dong, Cheoin-gu, Yongin-si, Gyeonggi-do, 449-100, Korea

Tel: +82-31-339-9970 Fax: +82-31-339-9855

www.e-ctk.com





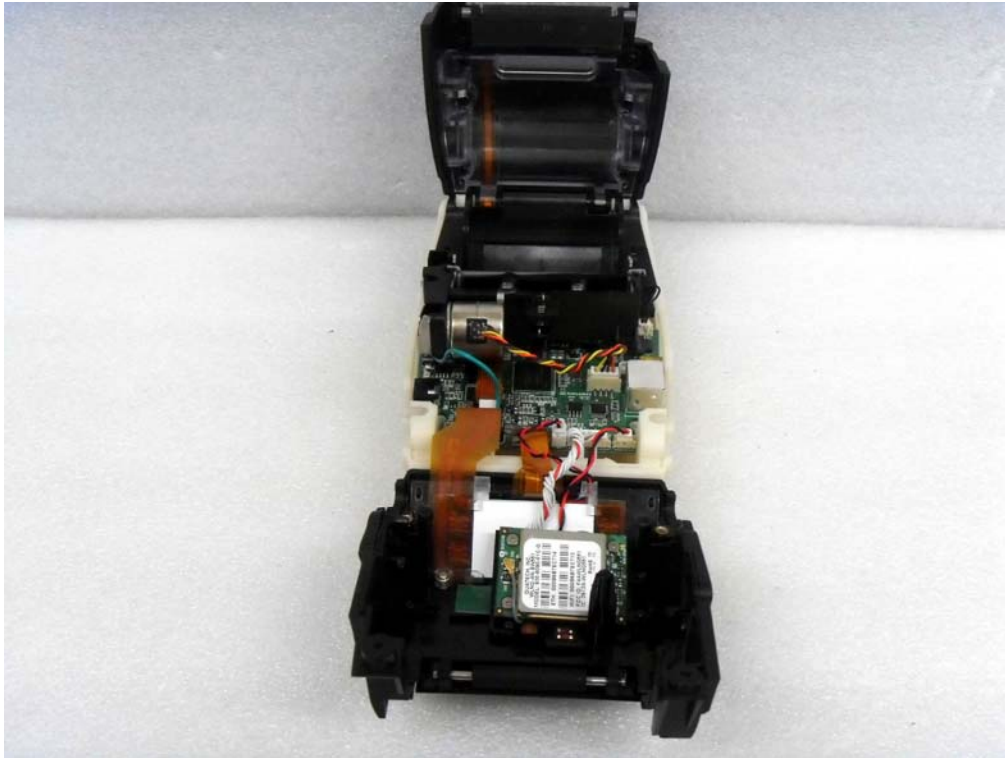
CTK Co., Ltd.

386-1, Ho-dong, Cheoin-gu, Yongin-si, Gyeonggi-do, 449-100, Korea

Tel: +82-31-339-9970 Fax: +82-31-339-9855

www.e-ctk.com

EUT Internal Photographs





CTK Co., Ltd.
The Prime Leader of Global Regulatory Certification

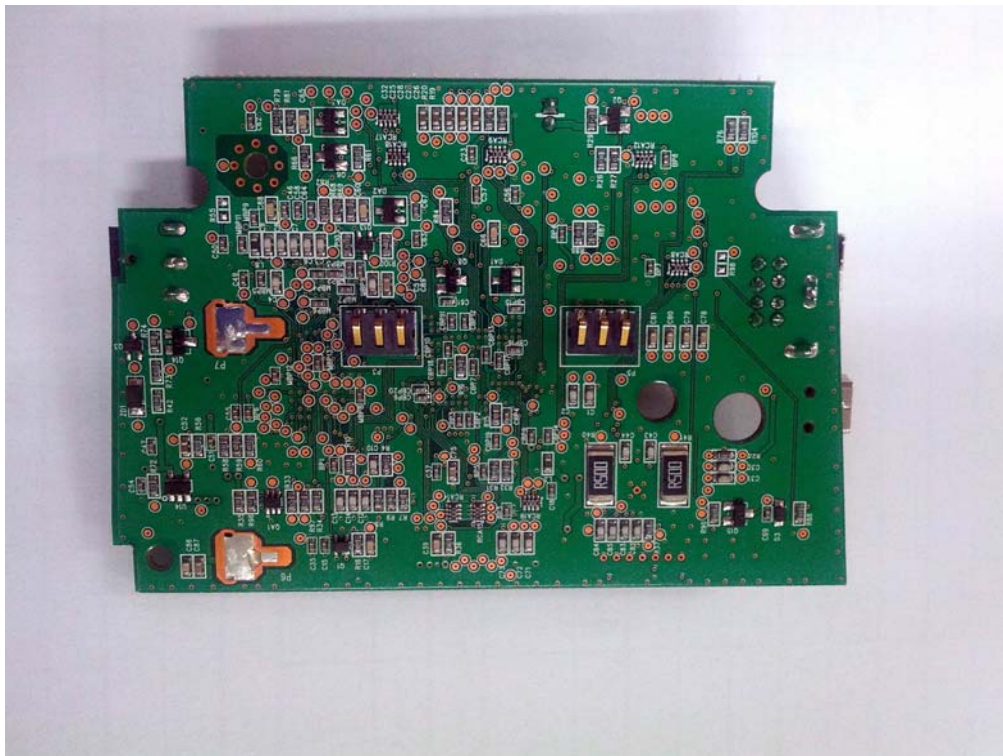
CTK Co., Ltd.

386-1, Ho-dong, Cheoin-gu, Yongin-si, Gyeonggi-do, 449-100, Korea

Tel: +82-31-339-9970 Fax: +82-31-339-9855

www.e-ctk.com

PCB





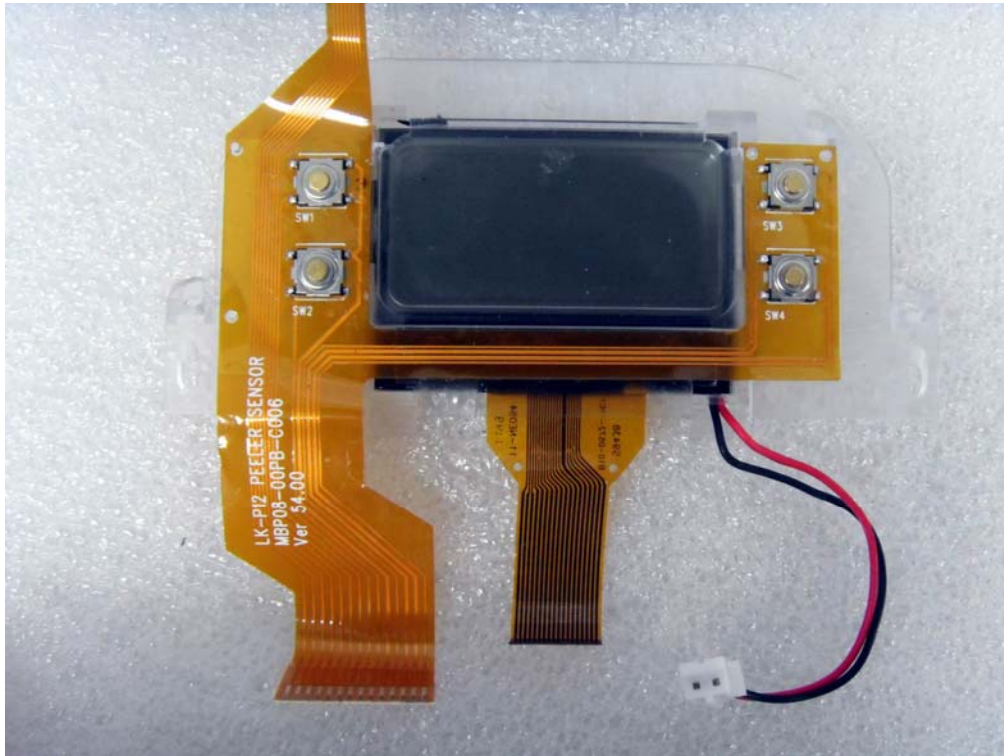
CTK Co., Ltd.
The Prime Leader of Global Regulatory Certification

CTK Co., Ltd.

386-1, Ho-dong, Cheoin-gu, Yongin-si, Gyeonggi-do, 449-100, Korea

Tel: +82-31-339-9970 Fax: +82-31-339-9855

www.e-ctk.com





CTK Co., Ltd.
The Prime Leader of Global Regulatory Certification

CTK Co., Ltd.

386-1, Ho-dong, Cheoin-gu, Yongin-si, Gyeonggi-do, 449-100, Korea

Tel: +82-31-339-9970 Fax: +82-31-339-9855

www.e-ctk.com



Battery Charger 1&2

[Battery Charger 1]





CTK Co., Ltd.
The Prime Leader of Global Regulatory Certification

CTK Co., Ltd.

386-1, Ho-dong, Cheoin-gu, Yongin-si, Gyeonggi-do, 449-100, Korea

Tel: +82-31-339-9970 Fax: +82-31-339-9855

www.e-ctk.com

[Battery Charger 2]





CTK Co., Ltd.
The Prime Leader of Global Regulatory Certification

CTK Co., Ltd.

386-1, Ho-dong, Cheoin-gu, Yongin-si, Gyeonggi-do, 449-100, Korea

Tel: +82-31-339-9970 Fax: +82-31-339-9855

www.e-ctk.com

Battery





CTK Co., Ltd.
The Prime Leader of Global Regulatory Certification

CTK Co., Ltd.


386-1, Ho-dong, Cheoin-gu, Yongin-si, Gyeonggi-do, 449-100, Korea

Tel: +82-31-339-9970 Fax: +82-31-339-9855

www.e-ctk.com

Label and Location





**sewoo**


MODEL :LK-P12W
Country of Origin : South Korea

This device complies with Part 15 of the FCC Rules. Operation is subject to the following two conditions: 1) this device may not cause harmful interference, and 2) this device must accept any interference that may cause undesired operations. This Class B digital apparatus meets all requirements of the Canadian Interference Causing Equipment Regulations. Cet appareil numérique de la classe B respecte toutes les exigences du Règlement sur le matériel brouilleur du Canada.

CONTAINS FCC ID: F4AWLNG511
FCC ID: WF5LKP12WQ

**LISTED**
I.T.E.
9M03
E159381



**2280**