

EMC TEST REPORT For FCC



Test Report No. : CTK-2012-00663
Date of Issue : July 6, 2012
Model/Type No. : LK-P12B and LK-P12AB
Kind of Product : Mobile Printer
Applicant : SEWOO TECH CO., LTD.
Applicant Address : 28-6, Gajangsaneopdong-ro, Osan-si, Gyeonggi-do, 447-210, Korea
Manufacturer : SEWOO TECH CO., LTD.
Manufacturer Address : 28-6, Gajangsaneopdong-ro, Osan-si, Gyeonggi-do, 447-210, Korea
Contact Person : Min-Seok Song / Senior Engineer
Telephone : +81-70-4035-3372
Received Date : April 10, 2012
Test period : Start : April 23, 2012 End : April 24, 2012
Test Results : ☒ **In Compliance** ☐ **Not in Compliance**

The test results presented in this report relate only to the object tested.

Tested by



Bong-jun, Jang
EMC Test Engineer
Date: July 6, 2012

Reviewed by



Jame
EMC Technical Manager
Date: July 6, 2012



CTK Co., Ltd.
The Prime Leader of Global Regulatory Certification

CTK Co., Ltd.

386-1, Ho-dong, Cheoin-gu, Yongin-si, Gyeonggi-do, 449-100, Korea

Tel: +82-31-339-9970 Fax: +82-31-339-9855

www.e-ctk.com

REPORT REVISION HISTORY

Date	Revision	Page No
July 6, 2012	Issued (CTK-2012-00663)	All

This report shall not be reproduced except in full, without the written approval of CTK Co., Ltd. This document may be altered or revised by CTK Co., Ltd. personnel only, and shall be noted in the revision section of the document. Any alteration of this document not carried out by CTK Co., Ltd. will constitute fraud and shall nullify the document.



CTK Co., Ltd.
The Prime Leader of Global Regulatory Certification

CTK Co., Ltd.

386-1, Ho-dong, Cheoin-gu, Yongin-si, Gyeonggi-do, 449-100, Korea

Tel: +82-31-339-9970 Fax: +82-31-339-9855

www.e-ctk.com

TABLE OF CONTENTS

REPORT REVISION HISTORY	2
1.0 General Product Description	4
1.1 Model Differences	4
1.2 Device Modifications	4
1.3 EUT Configuration(s)	5
1.4 Test Software	6
1.5 EUT Operating Mode(s)	6
1.6 Configuration	7
1.7 Calibration Details of Equipment Used for Measurement	9
1.8 Test Facility	9
1.9 Measurement Procedure	9
1.10 Laboratory Accreditations and Listings	10
1.11 Measurement Uncertainty	10
2.0 Emissions Test Regulations	11
2.1 Conducted Voltage Emissions	12
2.2 Radiated Electric Field Emissions	13
APPENDIX A – TEST DATA	14
Conducted Voltage Emissions	14
Radiated Electric Field Emissions	22
APPENDIX B - Test Setup Photos and Configuration	26
Conducted Voltage Emissions	26
Radiated Electric Field Emissions	27
APPENDIX C – EUT Photographs	28
EUT Internal Photographs	31
PCB	32
Battery Charger 1&2	35
Battery	37
Label and Location	38



CTK Co., Ltd.
The Prime Leader of Global Regulatory Certification

CTK Co., Ltd.

386-1, Ho-dong, Cheoin-gu, Yongin-si, Gyeonggi-do, 449-100, Korea

Tel: +82-31-339-9970 Fax: +82-31-339-9855

www.e-ctk.com

1.0 General Product Description

1.0.1 Tested Equipment

- ☒ Unless otherwise indicated, all tests were conducted on Model LK-P12B.
- ☒ Tests performed on Model LK-P12B were considered to be representative of Model LK-P12AB.

1.0.2 Equipment Size, Mobility and Identification

Dimensions: 104(W) by 85(D) by 158(H) ☒ mm
Mobility: ☒ Table-top ☐ Floor-standing ☐ Built-in ☒ Portable
Serial No.: Prototype

1.0.3 Electrical Ratings

[Battery Charger 1] Input: 100-240 Vac, 50-60 Hz, 400 mA
Output: 8.4 Vdc, 0.8 A

[Battery Charger 2] Input: 100-250 Vac, 50-60 Hz, 0.5 A
Output: 8.4 Vdc, 0.8 A

[EUT] Input : 8.4 Vdc
Output : -

1.0.4 Test Voltage & Frequency

Unless indicated otherwise on the individual data sheet or test results, the test voltage and frequency was as indicated below.

Voltage: 120 Vac
Frequency: 60 Hz

1.0.5 Clock & Other Frequencies Utilized

12 MHz

1.1 Model Differences

These models are identical except for as below;

- LK-P12B is Basic model.
- LK-P12AB are identical to LK-P12B only except for model name according to buyer request.

1.2 Device Modifications

The following modifications were necessary for compliance:
Not applicable

1.3 EUT Configuration(s)

See Appendix B for individual test set-up configuration(s). The following peripheral devices and/or interface cables were connected during the measurement:

[USB/Serial Printing Mode]

☒ Peripheral Devices

Device	Manufacturer	Model No.	Serial No.
Personal Computer	comwins	DB-P73	BL5497DQ300097T
LCD Monitor	Lite-On Technology Corp.	VS17	CNN5130QMC
Mouse	LOGITECH	M-U48a	LZC10705528
Keyboard	MONTEREY INTERNATIONAL CORP.	K6515	ZCH3011

☒ Cable Description

#	Description	Ferrite Core	Length (m)	Other Details
1	AC power Cable, Unshielded	No	1.8	Connect to AC power
2	Mouse Cable, Shielded	No	1.5	Between a Personal Computer and a Mouse
3	Keyboard Cable, Shielded	No	1.5	Between a Personal Computer and a Keyboard
4	D-sub Cable, Unshielded	Yes	1.5	Between a Personal Computer and a LCD Monitor
5	USB Cable, Shielded	Yes	1.2	Between the EUT and a Personal Computer
6	Serial Cable, Shielded	No	1.2	Between the EUT and a Personal Computer

[Battery Charging Mode: Battery Charger 1]

☒ Peripheral Devices

Device	Manufacturer	Model No.	Serial No.
Battery Charger 1	Dongguan Shilong Fuhua Electronic Co., Ltd.	UE09WCP-084080SPC	-

☒ Cable Description

#	Description	Ferrite Core	Length (m)	Other Details
1	DC In Cable, Unshielded	No	1.2	Between the EUT and a Battery Charger 1
2	AC Power	-	-	Connect to AC power
3	USB Cable, Shielded	Yes	1.2	Connect to the EUT
4	Serial Cable, Shielded	No	1.2	Connect to the EUT

[Battery Charging Mode: Battery Charger 2]

☒ Peripheral Devices

Device	Manufacturer	Model No.	Serial No.
Battery Charger 2	BridgePower Corp.	BL607080086100NK	-

☒ Cable Description

#	Description	Ferrite Core	Length (m)	Other Details
1	DC In Cable, Unshielded	Yes	1.2	Between the EUT and a Battery Charger 2
2	AC Power	No	1.8	Connect to AC power
3	USB Cable, Shielded	Yes	1.2	Connect to the EUT
4	Serial Cable, Shielded	No	1.2	Connect to the EUT



CTK Co., Ltd.
The Prime Leader of EMI/RF Regulatory Certification

CTK Co., Ltd.

386-1, Ho-dong, Cheoin-gu, Yongin-si, Gyeonggi-do, 449-100, Korea

Tel: +82-31-339-9970 Fax: +82-31-339-9855

www.e-ctk.com

1.4 Test Software

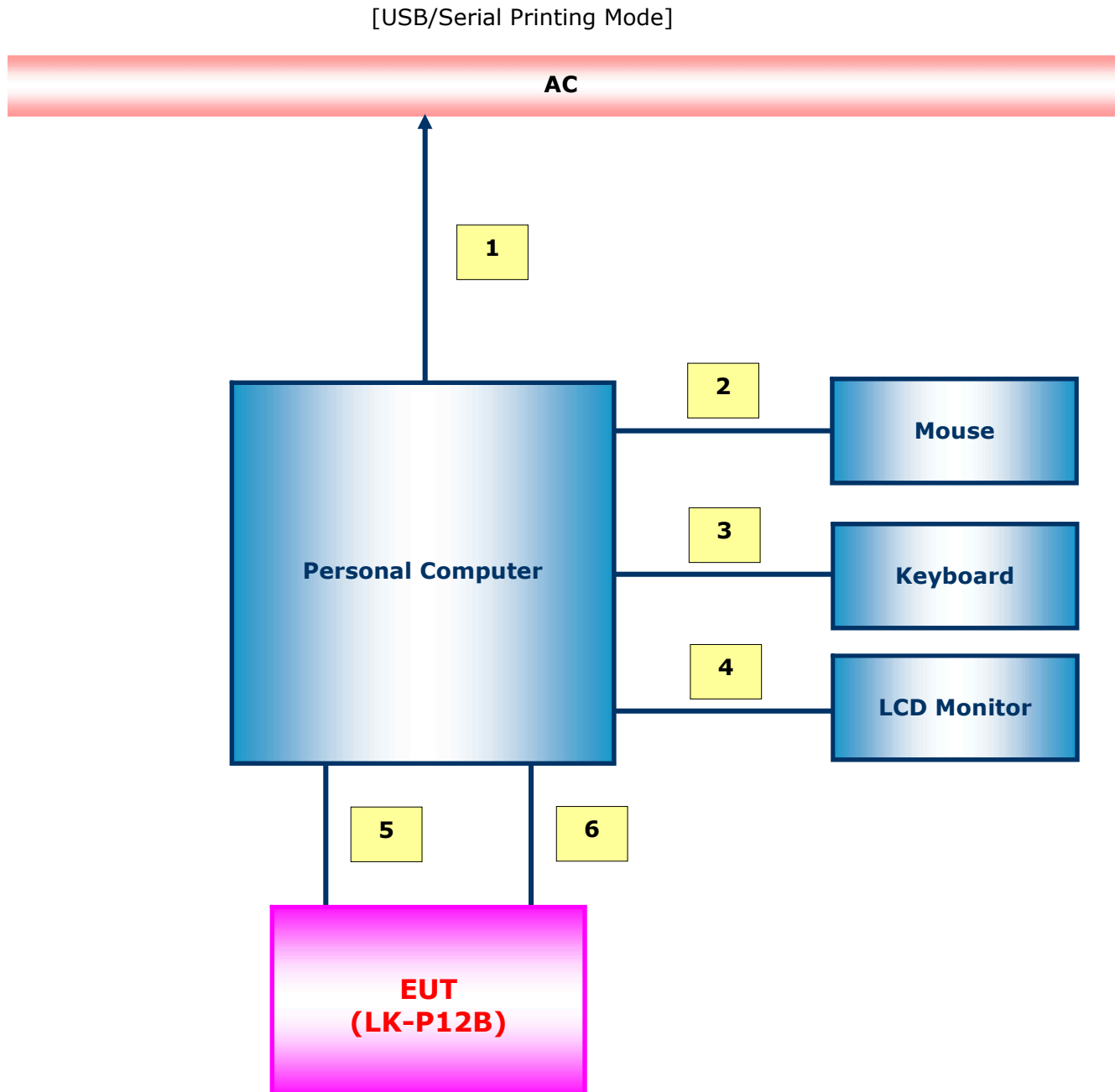
- ☐ EMC Test V 1.0
- ☐ Display Test Patterns - V1.8
- ☐ Ping.exe
- ☒ LK-Pxx CPCL TEST Program (20120126)

1.5 EUT Operating Mode(s)

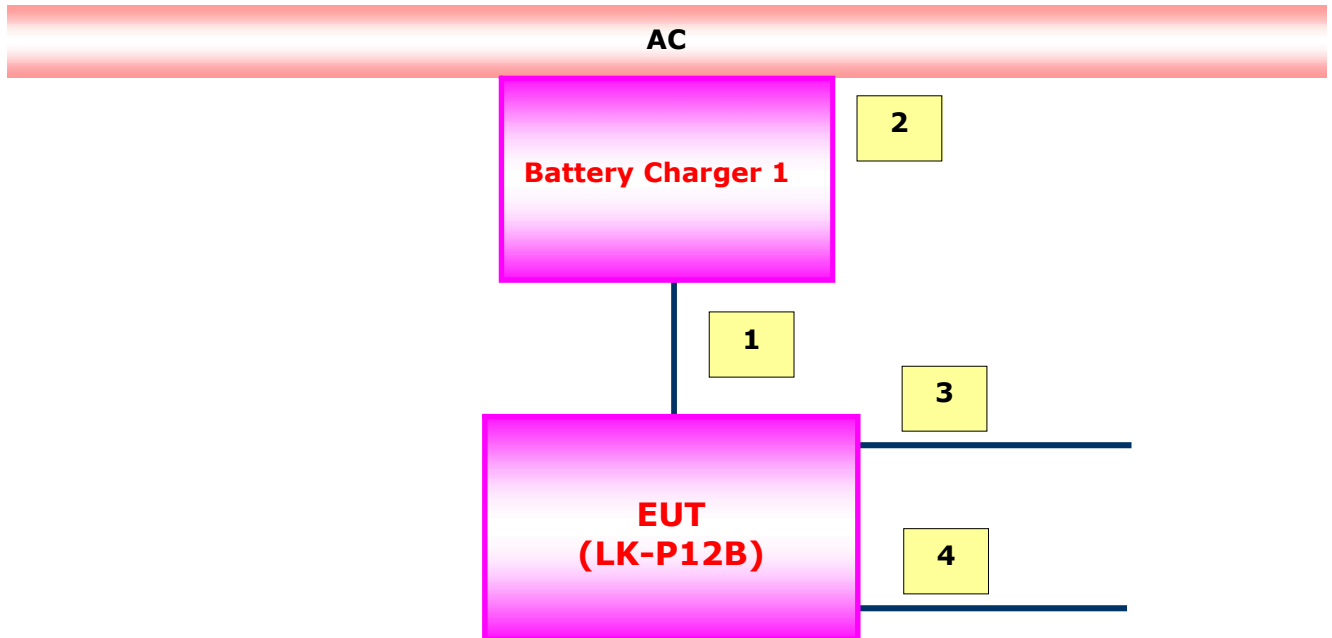
Equipment under test was operated during the measurement under the following conditions:

- | | |
|--|--|
| <input type="checkbox"/> Standby | <input type="checkbox"/> Scrolling 'H' |
| <input type="checkbox"/> Display circles pattern | <input type="checkbox"/> Display color bar pattern |
| <input checked="" type="checkbox"/> Practice operation - | |
| 1) USB/Serial Printing Mode | |
| 2) Battery Charging Mode | |

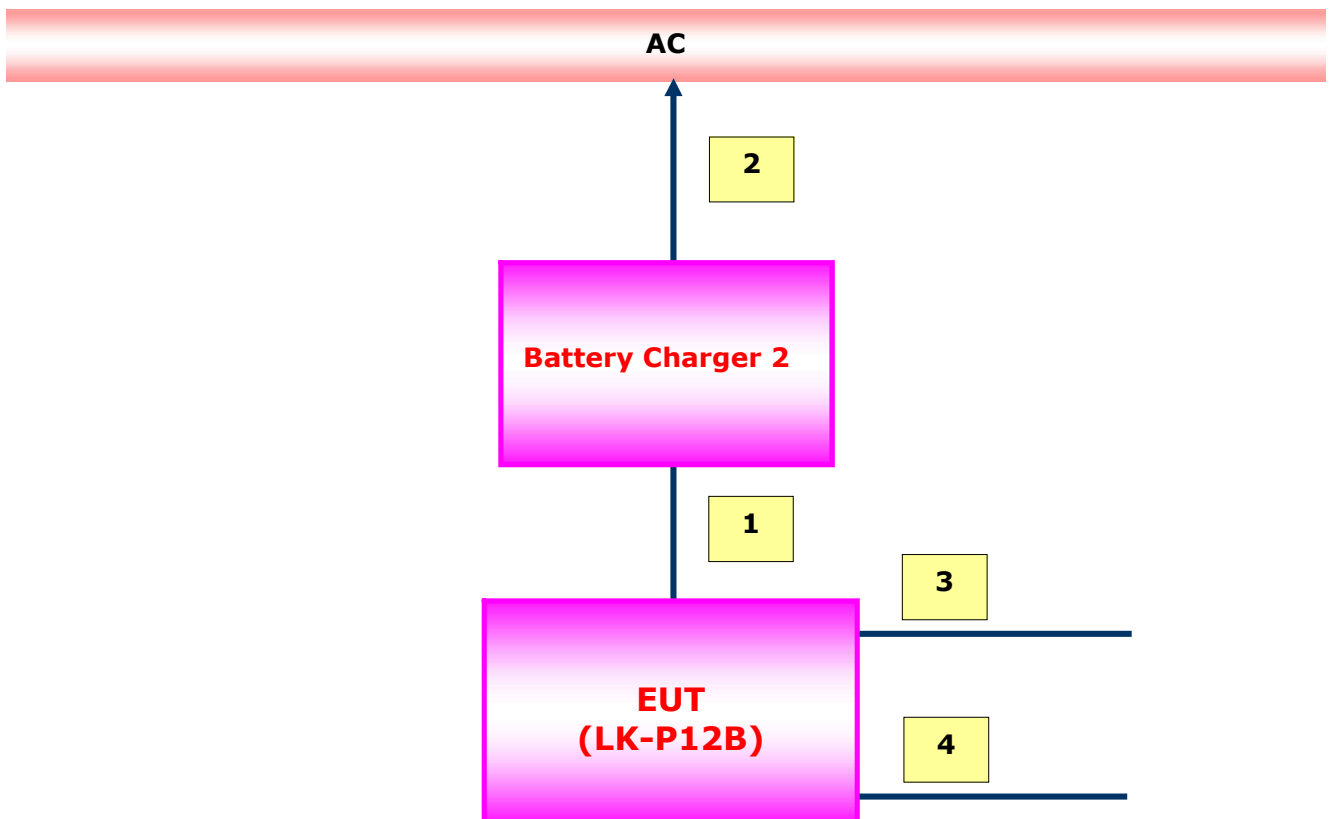
1.6 Configuration



[Battery Charging Mode: Battery Charger 1]



[Battery Charging Mode: Battery Charger 2]





CTK Co., Ltd.
The Prime Leader of Global Regulatory Certification

CTK Co., Ltd.

386-1, Ho-dong, Cheoin-gu, Yongin-si, Gyeonggi-do, 449-100, Korea

Tel: +82-31-339-9970 Fax: +82-31-339-9855

www.e-ctk.com

1.7 Calibration Details of Equipment Used for Measurement

Test equipment and test accessories are calibrated on regular basis. The maximum time between calibrations is one year or what is recommended by the manufacturer, whichever is less. All test equipment calibrations are traceable to the Korea Research Institute of Standards and Science (KRISS), therefore, all test data recorded in this report is traceable to KRISS.

1.8 Test Facility

The measurement facility is located at 386-1, Ho-dong, Cheoin-gu, Yongin-si, Gyeonggi-do, 449-100, Korea. The sites are constructed in conformance with the requirements of ANSI C63.7, ANSI C63.4 and CISPR Publication 22.

1.9 Measurement Procedure

Preliminary AC power line conducted emissions tests were performed shielded room. To find worst mode, several typical mode and typical cable position were tested. Final AC power line conducted emissions test was performed shielded room. (location is same as Preliminary test)
Based on the preliminary tests of the EUT, final test was proceeded worst case test mode and cable configuration.

Preliminary radiated emissions test were performed anechoic chamber (Distance of antenna and EUT was 3 m). To find worst mode, several typical mode and typical cable position were tested and peak level and frequency were recorded.




Final radiated emissions test was performed Open Area Test Site. Based on the preliminary tests of the EUT, final test was proceeded worst case test mode and cable configuration.

* Measurement procedures was In accordance with ANSI C63.4-2003 7.2.3, 7.2.4, 8.3.1.1, 8.3.1.2

Note #1: Comparing this test result and FCC Part 18 limits, the emission of this product can also meet the FCC Part 18.305 Field Strength Limits and 18.307 Conduction Limits.

Note #2: These results are deemed satisfactory evidence of compliance with ICES-003 of The Canadian Interference-Causing Equipment Regulations.

1.10 Laboratory Accreditations and Listings

Country	Agency	Scope of Accreditation	Logo
USA	FCC	3 m & 10 m OATS, 3 m & 10 m SAC and Conducted Test Site to perform FCC Part 15/18 measurements	 805871
JAPAN	VCCI	10 m OATS, 3 m & 10 m SAC and Conducted Test Site	 R-948, C-986, T-1843, R-3627, G-387
KOREA	KCC	EMI (10 m OATS, 10 m SAC and Conducted Test Site) EMS (ESD, RS, EFT/Burst, Surge, CS, Magnetic, Dips and Interruptions)	 No. 51, KR0025

1.11 Measurement Uncertainty

Compliance of the product is based on the measured value.

However, the measurement uncertainty is included for information purposes.

The measurement uncertainties given below are based on a standard uncertainty multiplied by a coverage factor of $k=2$, providing a level of confidence of approximately 95 %.

Measurement Type	Frequency Range	Expanded Uncertainty
Conducted Emission	150 kHz to 30 MHz	± 2.48 dB (C.L.: Approx. 95 %, $k=2$)
Radiated Emission	30 MHz to 1000 MHz	± 3.70 dB (C.L.: Approx. 95 %, $k=2$)



CTK Co., Ltd.
The Prime Leader of Global Regulatory Certification

CTK Co., Ltd.

386-1, Ho-dong, Cheoin-gu, Yongin-si, Gyeonggi-do, 449-100, Korea

Tel: +82-31-339-9970 Fax: +82-31-339-9855

www.e-ctk.com

2.0 Emissions Test Regulations

The emissions tests were performed according to following regulations:

- | | | |
|--|--|--|
| <input type="checkbox"/> EN 61000-6-3:2007 | | |
| <input type="checkbox"/> EN 61000-6-4:2007 | | |
| <input type="checkbox"/> EN 55011:2007 +A2:2007 | <input type="checkbox"/> Group 1
<input type="checkbox"/> Class A | <input type="checkbox"/> Group 2
<input type="checkbox"/> Class B |
| <input type="checkbox"/> EN 55013:2001 +A1:2003 +A2:2006 | | |
| <input type="checkbox"/> EN 55014-1:2006 | | |
| <input type="checkbox"/> EN 55014-1:2006 +A1:2009 | | |
| <input type="checkbox"/> EN 55015:2006 +A1:2007 +A2:2009 | | |
| <input type="checkbox"/> EN 61204-3:2000 | <input type="checkbox"/> Class A | <input type="checkbox"/> Class B |
| <input type="checkbox"/> EN 61131-2:2007 | | |
| <input type="checkbox"/> EN 61326-1:2006 | <input type="checkbox"/> Class A | <input type="checkbox"/> Class B |
| <input type="checkbox"/> EN 55022:2006 +A1:2007 | <input type="checkbox"/> Class A | <input type="checkbox"/> Class B |
| <input type="checkbox"/> EN 61000-3-2:2006 +A1:2009 +A2:2009 | | |
| <input type="checkbox"/> EN 61000-3-3:2008 | | |
| <input type="checkbox"/> VCCI V-3/2011.04 | <input type="checkbox"/> Class A | <input type="checkbox"/> Class B |
| <input type="checkbox"/> AS/NZS CISPR22:2009 | <input type="checkbox"/> Class A | <input type="checkbox"/> Class B |
| <input checked="" type="checkbox"/> FCC Part 15 Subpart B | <input type="checkbox"/> Class A | <input checked="" type="checkbox"/> Class B |
| <input type="checkbox"/> CISPR 22:2006 | <input type="checkbox"/> Class A | <input type="checkbox"/> Class B |



CTK Co., Ltd.
The Prime Leader of Global Regulatory Certification

CTK Co., Ltd.

386-1, Ho-dong, Cheoin-gu, Yongin-si, Gyeonggi-do, 449-100, Korea
Tel: +82-31-339-9970 Fax: +82-31-339-9855
www.e-ctk.com

2.1 Conducted Voltage Emissions

Test Date

April 23, 2012

Test Location

Shielded Room

Test Equipment

	Name of Equipment	Manufacturer	Model No.	Serial No.	Due Date
<input checked="" type="checkbox"/>	EMI TEST RECEIVER	Rohde & Schwarz	ESCI3	100032	2013-02-09
<input checked="" type="checkbox"/>	LISN	Rohde & Schwarz	ENV216	101235	2012-08-18
<input checked="" type="checkbox"/>	LISN	Rohde & Schwarz	ENV216	101236	2012-08-06
<input type="checkbox"/>	EMI Test Receiver	Rohde & Schwarz	ESHS30	828144/002	2013-02-09
<input type="checkbox"/>	LISN	Rohde & Schwarz	ENV216	101150	2013-02-09
<input type="checkbox"/>	LISN	Rohde & Schwarz	ENV216	101151	2012-03-09

Frequency Range of Measurement

150 kHz to 30 MHz

Instrument Settings

IF Band Width: 9 kHz

Test Results

The requirements are: ☐ MET ☐ NOT MET ☒ NOT APPLICABLE

Frequency (MHz)	Measured Data (dBμV)	Margin (dB)	Remark
0.532 500	47.5	8.5	Quasi-peak (Battery Charging Mode: Battery Charger 1)

Remarks

See Appendix A for test data.



CTK Co., Ltd.
The Prime Leader of Global Regulatory Certification

CTK Co., Ltd.

386-1, Ho-dong, Cheoin-gu, Yongin-si, Gyeonggi-do, 449-100, Korea
Tel: +82-31-339-9970 Fax: +82-31-339-9855
www.e-ctk.com

2.2 Radiated Electric Field Emissions

Test Date

April 24, 2012

Test Location

Testing was performed at a test distance of:

- ☐ 10 m OATS ☐ 3 m OATS
☒ 10 m SAC ☐ 3 m SAC

Test Equipment

	Name of Equipment	Manufacturer	Model No.	Serial No.	Due Date
<input checked="" type="checkbox"/>	EMI TEST RECEIVER	Rohde & Schwarz	ESCI7	100814	2012-12-13
<input checked="" type="checkbox"/>	ULTRA Broadband Antenna	Rohde & Schwarz	HL562	100203	2013-07-05
<input checked="" type="checkbox"/>	AMPLIFIER	Sonoma Instrument Co.	310	291721	2013-03-27
<input type="checkbox"/>	EMI TEST RECEIVER	Rohde & Schwarz	ESCI7	100816	2012-12-16
<input type="checkbox"/>	Double Ridged Guide Antenna	ETS-Lindgren	3115	00078894	2013-03-22
<input type="checkbox"/>	PREAMPLIFIER	Agilent Technologies	8449B	3008A02307	2012-11-17

Frequency Range of Measurement

- ☒ 30 MHz to 1 GHz
☐ 1 GHz to _ GHz

Instrument Settings

- ☒ IF Band Width: 120 kHz
☐ IF Band Width: 1 MHz

Test Results

The requirements are: ☒ MET ☐ NOT MET ☐ NOT APPLICABLE

Frequency (MHz)	Measured Data (dB μ V/m)	Margin (dB)	Remark
672.019	39.2	6.8	Quasi-peak (Serial Printing Mode)

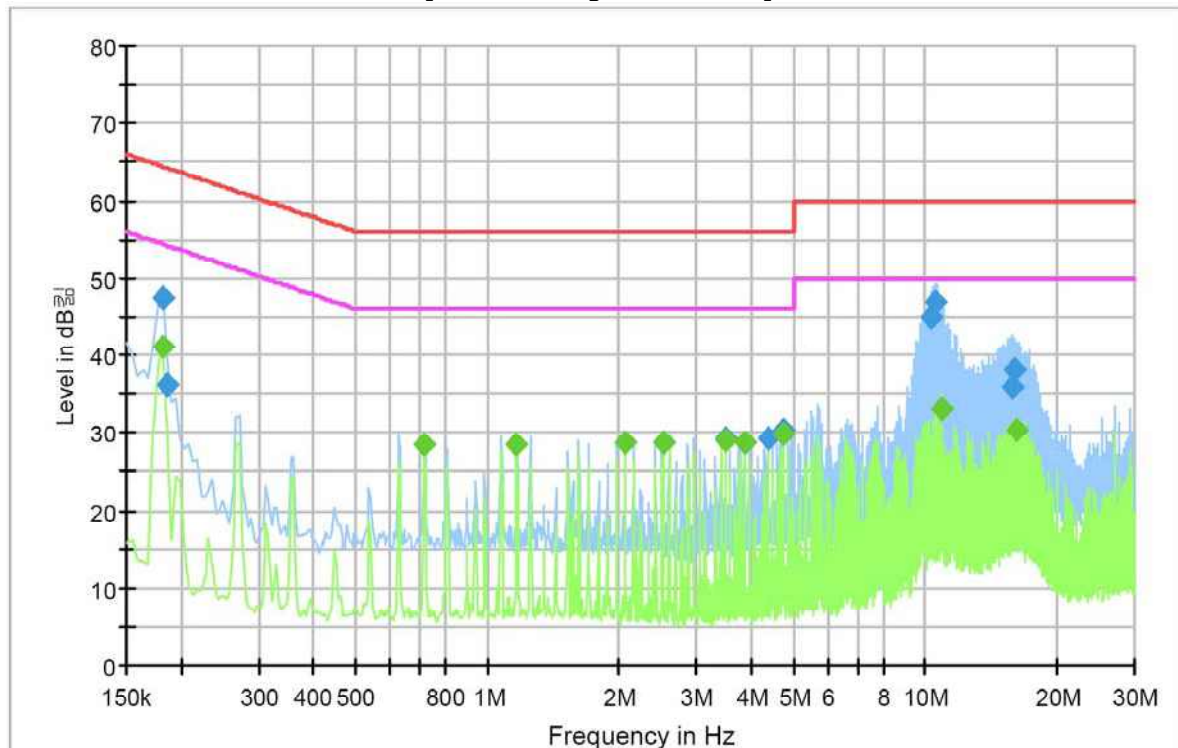
Remarks

See Appendix A for test data.

APPENDIX A – TEST DATA

Conducted Voltage Emissions

[USB Printing Mode: HOT]



Final Result 1

Frequency (MHz)	QuasiPeak (dBμV)	Meas. Time (ms)	Bandwidth (kHz)	Filter	Line	Corr. (dB)	Margin (dB)	Limit (dBμV)
0.181500	47.5	1000.0	9.000	On	L1	10.0	16.9	64.4
0.186000	36.1	1000.0	9.000	On	L1	10.0	28.1	64.2
2.512500	28.8	1000.0	9.000	On	L1	9.9	27.2	56.0
3.498000	29.4	1000.0	9.000	On	L1	9.8	26.6	56.0
4.393500	29.4	1000.0	9.000	On	L1	9.8	26.6	56.0
4.753500	30.2	1000.0	9.000	On	L1	9.8	25.8	56.0
10.306500	44.9	1000.0	9.000	On	L1	9.7	15.1	60.0
10.504500	47.0	1000.0	9.000	On	L1	9.7	13.0	60.0
15.810000	35.8	1000.0	9.000	On	L1	9.8	24.2	60.0
16.057500	38.2	1000.0	9.000	On	L1	9.8	21.8	60.0

Final Result 2

Frequency (MHz)	Average (dBμV)	Meas. Time (ms)	Bandwidth (kHz)	Filter	Line	Corr. (dB)	Margin (dB)	Limit (dBμV)
0.181500	41.1	1000.0	9.000	On	L1	10.0	13.3	54.4
0.717000	28.3	1000.0	9.000	On	L1	10.1	17.7	46.0
1.167000	28.5	1000.0	9.000	On	L1	10.0	17.5	46.0
2.062500	28.7	1000.0	9.000	On	L1	9.9	17.3	46.0
2.512500	28.6	1000.0	9.000	On	L1	9.9	17.4	46.0
3.498000	28.9	1000.0	9.000	On	L1	9.8	17.1	46.0
3.858000	28.7	1000.0	9.000	On	L1	9.8	17.3	46.0
4.753500	29.7	1000.0	9.000	On	L1	9.8	16.3	46.0
10.855500	33.0	1000.0	9.000	On	L1	9.7	17.0	50.0
16.156500	30.4	1000.0	9.000	On	L1	9.8	19.6	50.0



CTK Co., Ltd.

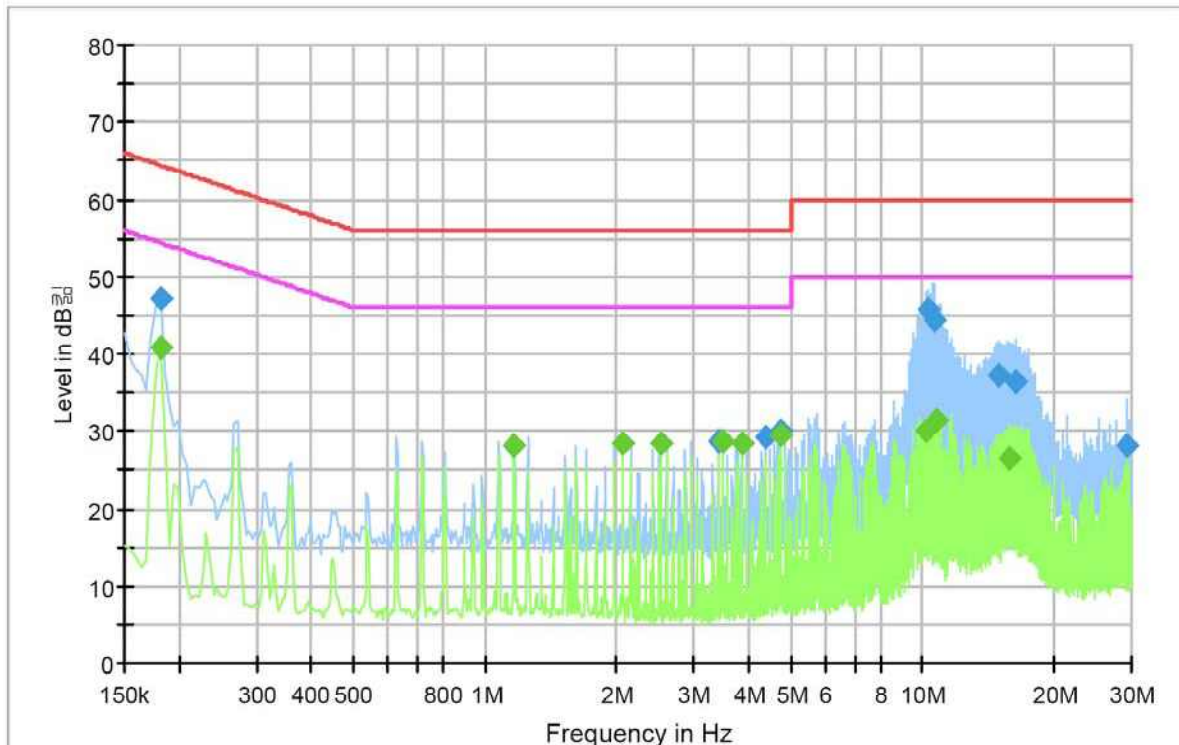
CTK Co., Ltd.

386-1, Ho-dong, Cheoin-gu, Yongin-si, Gyeonggi-do, 449-100, Korea

Tel: +82-31-339-9970 Fax: +82-31-339-9855

www.e-ctk.com

[USB Printing Mode: NEUTRAL]



Final Result 1

Frequency (MHz)	QuasiPeak (dBm)	Meas. Time (ms)	Bandwidth (kHz)	Filter	Line	Corr. (dB)	Margin (dB)	Limit (dBm)
0.181500	47.2	1000.0	9.000	On	N	10.0	17.2	64.4
1.167000	28.2	1000.0	9.000	On	N	10.0	27.8	56.0
3.408000	28.7	1000.0	9.000	On	N	9.8	27.3	56.0
4.393500	29.2	1000.0	9.000	On	N	9.8	26.8	56.0
4.753500	30.0	1000.0	9.000	On	N	9.8	26.0	56.0
10.261500	45.7	1000.0	9.000	On	N	9.7	14.3	60.0
10.612500	44.5	1000.0	9.000	On	N	9.7	15.5	60.0
14.865000	37.1	1000.0	9.000	On	N	9.8	22.9	60.0
16.417500	36.5	1000.0	9.000	On	N	9.8	23.5	60.0
29.463000	28.2	1000.0	9.000	On	N	10.2	31.8	60.0

Final Result 2

Frequency (MHz)	Average (dBm)	Meas. Time (ms)	Bandwidth (kHz)	Filter	Line	Corr. (dB)	Margin (dB)	Limit (dBm)
0.181500	40.9	1000.0	9.000	On	N	10.0	13.6	54.4
1.167000	28.2	1000.0	9.000	On	N	10.0	17.8	46.0
2.062500	28.5	1000.0	9.000	On	N	9.9	17.5	46.0
2.512500	28.3	1000.0	9.000	On	N	9.9	17.7	46.0
3.498000	28.7	1000.0	9.000	On	N	9.8	17.3	46.0
3.858000	28.5	1000.0	9.000	On	N	9.8	17.5	46.0
4.753500	29.5	1000.0	9.000	On	N	9.8	16.5	46.0
10.162500	30.0	1000.0	9.000	On	N	9.7	20.0	50.0
10.765500	31.3	1000.0	9.000	On	N	9.7	18.7	50.0
15.868500	26.6	1000.0	9.000	On	N	9.8	23.4	50.0



CTK Co., Ltd.
The Prime Leader of Global Regulatory Certification

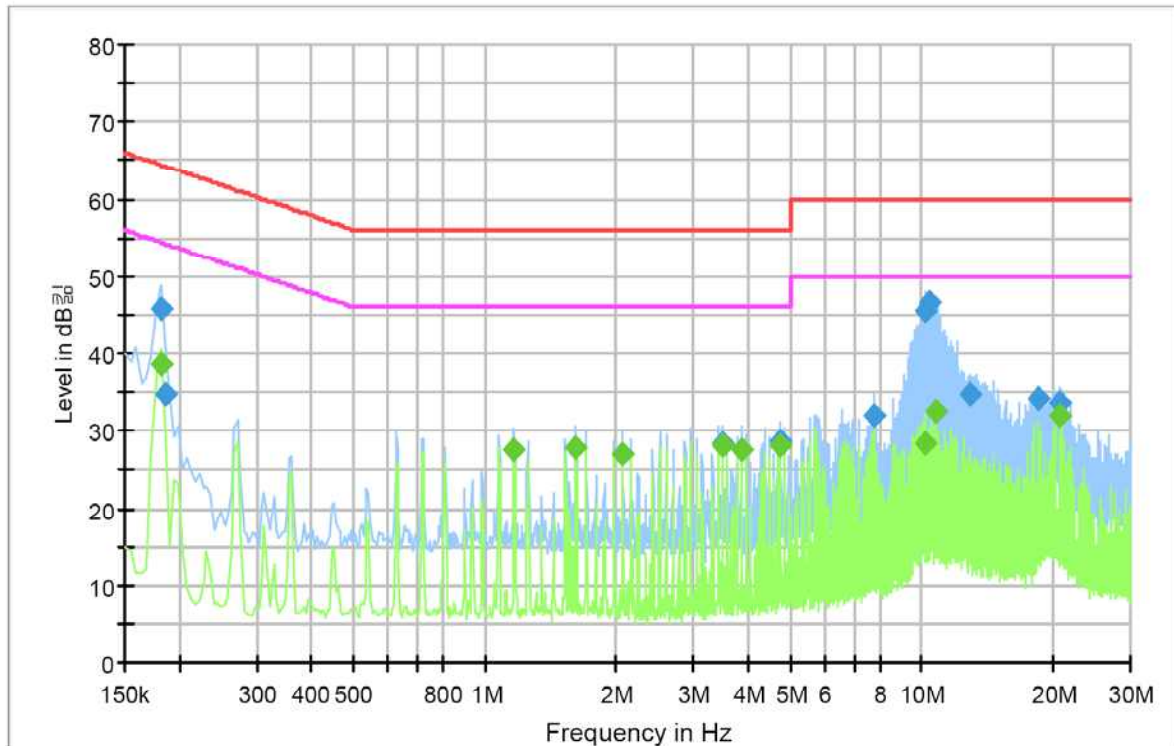
CTK Co., Ltd.

386-1, Ho-dong, Cheoin-gu, Yongin-si, Gyeonggi-do, 449-100, Korea

Tel: +82-31-339-9970 Fax: +82-31-339-9855

www.e-ctk.com

[Serial Printing Mode: HOT]



Final Result 1

Frequency (MHz)	QuasiPeak (dBm)	Meas. Time (ms)	Bandwidth (kHz)	Filter	Line	Corr. (dB)	Margin (dB)	Limit (dBm)
0.181500	45.9	1000.0	9.000	On	L1	10.0	18.5	64.4
0.186000	34.9	1000.0	9.000	On	L1	10.0	29.3	64.2
3.502500	28.4	1000.0	9.000	On	L1	9.8	27.6	56.0
4.758000	28.7	1000.0	9.000	On	L1	9.8	27.3	56.0
7.813500	32.0	1000.0	9.000	On	L1	9.7	28.0	60.0
10.225500	45.5	1000.0	9.000	On	L1	9.7	14.5	60.0
10.473000	46.7	1000.0	9.000	On	L1	9.7	13.3	60.0
12.930000	34.8	1000.0	9.000	On	L1	9.8	25.2	60.0
18.438000	34.1	1000.0	9.000	On	L1	9.8	25.9	60.0
20.625000	33.6	1000.0	9.000	On	L1	9.8	26.4	60.0

Final Result 2

Frequency (MHz)	Average (dBm)	Meas. Time (ms)	Bandwidth (kHz)	Filter	Line	Corr. (dB)	Margin (dB)	Limit (dBm)
0.181500	38.7	1000.0	9.000	On	L1	10.0	15.8	54.4
1.167000	27.5	1000.0	9.000	On	L1	10.0	18.5	46.0
1.617000	27.7	1000.0	9.000	On	L1	9.9	18.3	46.0
2.067000	27.1	1000.0	9.000	On	L1	9.9	18.9	46.0
3.502500	28.2	1000.0	9.000	On	L1	9.8	17.8	46.0
3.862500	27.7	1000.0	9.000	On	L1	9.8	18.3	46.0
4.758000	28.2	1000.0	9.000	On	L1	9.8	17.8	46.0
10.176000	28.4	1000.0	9.000	On	L1	9.7	21.6	50.0
10.774500	32.5	1000.0	9.000	On	L1	9.7	17.5	50.0
20.625000	32.0	1000.0	9.000	On	L1	9.8	18.0	50.0



CTK Co., Ltd.

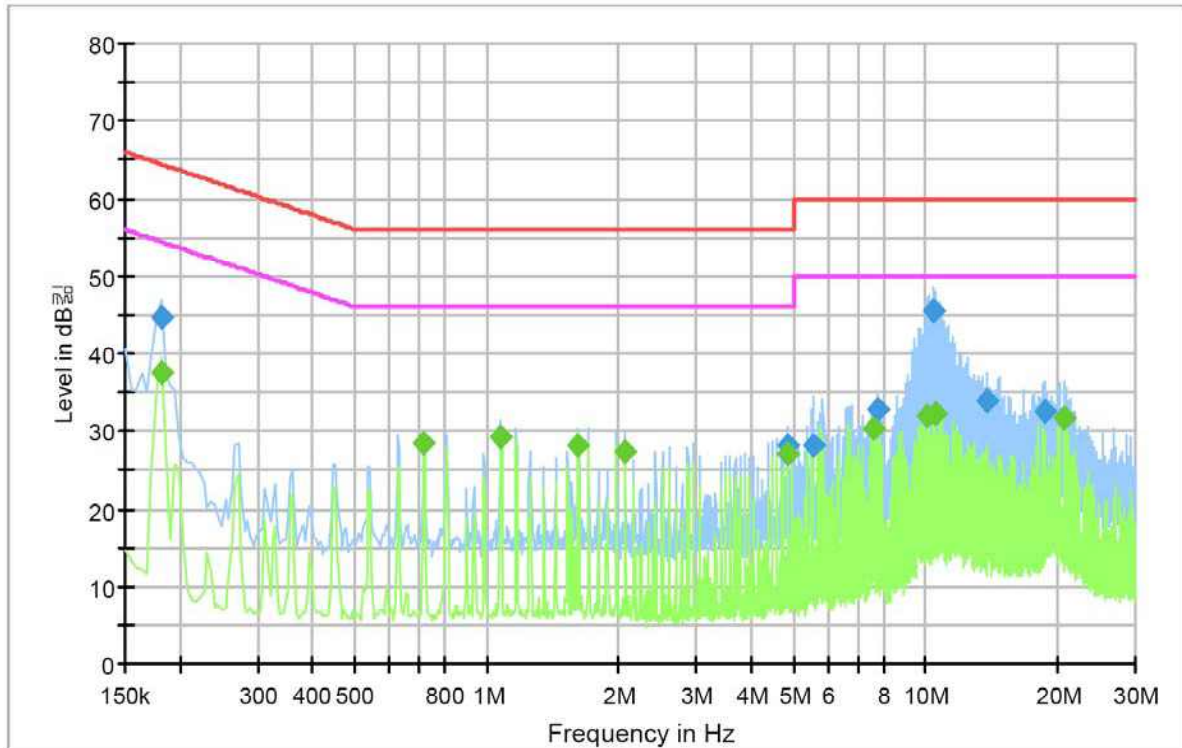
CTK Co., Ltd.

386-1, Ho-dong, Cheoin-gu, Yongin-si, Gyeonggi-do, 449-100, Korea

Tel: +82-31-339-9970 Fax: +82-31-339-9855

www.e-ctk.com

[Serial Printing Mode: NEUTRAL]



Final Result 1

Frequency (MHz)	QuasiPeak (dBm)	Meas. Time (ms)	Bandwidth (kHz)	Filter	Line	Corr. (dB)	Margin (dB)	Limit (dBm)
0.181500	44.8	1000.0	9.000	On	N	10.0	19.7	64.4
1.077000	29.3	1000.0	9.000	On	N	10.0	26.7	56.0
4.848000	28.3	1000.0	9.000	On	N	9.8	27.7	56.0
5.568000	28.0	1000.0	9.000	On	N	9.8	32.0	60.0
7.813500	32.9	1000.0	9.000	On	N	9.7	27.1	60.0
10.378500	45.6	1000.0	9.000	On	N	9.7	14.4	60.0
10.428000	45.5	1000.0	9.000	On	N	9.7	14.5	60.0
13.735500	34.0	1000.0	9.000	On	N	9.8	26.0	60.0
18.753000	32.6	1000.0	9.000	On	N	9.9	27.4	60.0
20.634000	31.8	1000.0	9.000	On	N	9.9	28.2	60.0

Final Result 2

Frequency (MHz)	Average (dBm)	Meas. Time (ms)	Bandwidth (kHz)	Filter	Line	Corr. (dB)	Margin (dB)	Limit (dBm)
0.181500	37.6	1000.0	9.000	On	N	10.0	16.8	54.4
0.717000	28.4	1000.0	9.000	On	N	10.1	17.6	46.0
1.077000	29.4	1000.0	9.000	On	N	10.0	16.6	46.0
1.617000	28.1	1000.0	9.000	On	N	9.9	17.9	46.0
2.067000	27.2	1000.0	9.000	On	N	9.9	18.8	46.0
4.848000	27.1	1000.0	9.000	On	N	9.8	18.9	46.0
7.633500	30.3	1000.0	9.000	On	N	9.7	19.7	50.0
10.126500	31.9	1000.0	9.000	On	N	9.7	18.1	50.0
10.527000	32.2	1000.0	9.000	On	N	9.7	17.8	50.0
20.629500	31.7	1000.0	9.000	On	N	9.9	18.3	50.0



CTK Co., Ltd.

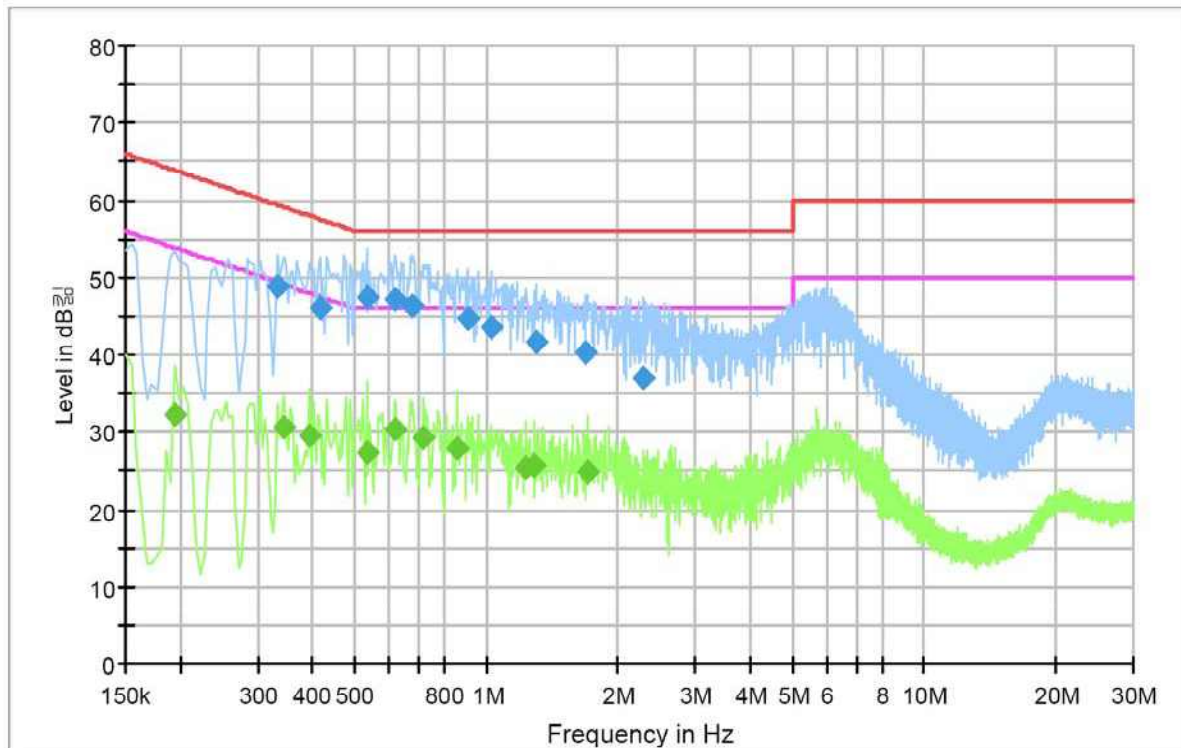
CTK Co., Ltd.

386-1, Ho-dong, Cheoin-gu, Yongin-si, Gyeonggi-do, 449-100, Korea

Tel: +82-31-339-9970 Fax: +82-31-339-9855

www.e-ctk.com

[Battery Charging Mode (Battery Charger 1): HOT]



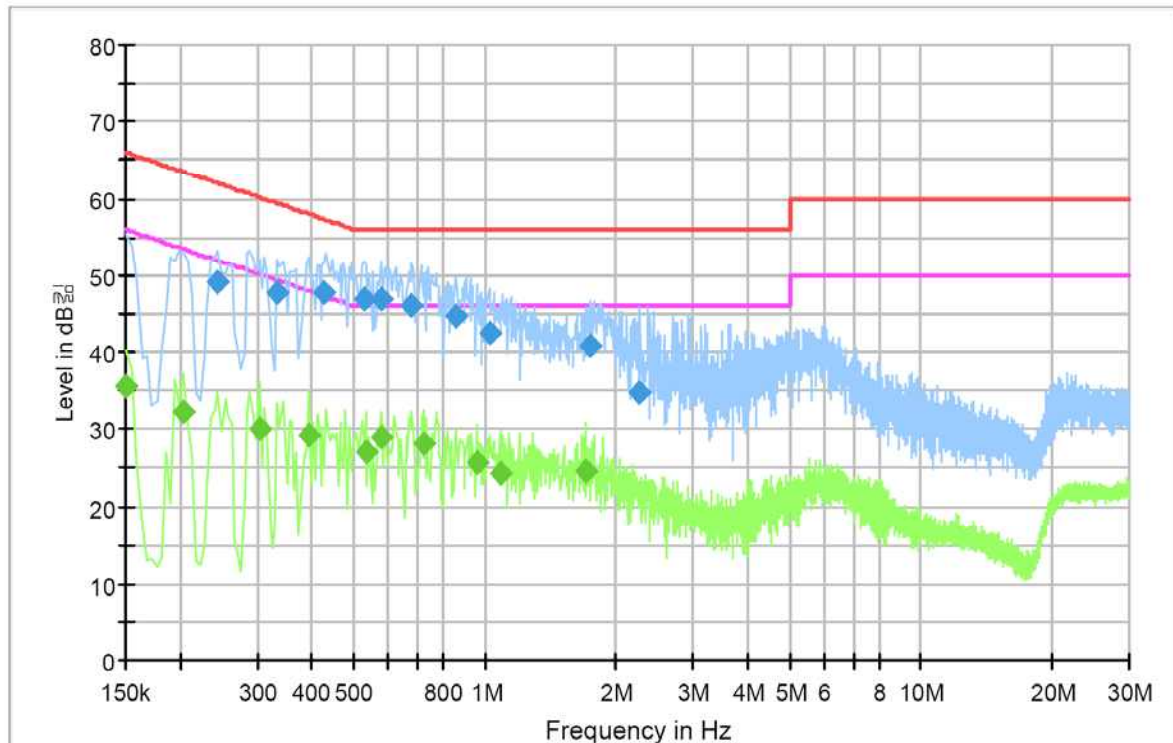
Final Result 1

Frequency (MHz)	QuasiPeak (dBm)	Meas. Time (ms)	Bandwidth (kHz)	Filter	Line	Corr. (dB)	Margin (dB)	Limit (dBm)
0.334500	48.8	1000.0	9.000	On	L1	10.0	10.6	59.3
0.415500	46.0	1000.0	9.000	On	L1	10.0	11.5	57.5
0.532500	47.5	1000.0	9.000	On	L1	10.0	8.5	56.0
0.618000	47.3	1000.0	9.000	On	L1	10.1	8.7	56.0
0.681000	46.5	1000.0	9.000	On	L1	10.1	9.5	56.0
0.906000	44.6	1000.0	9.000	On	L1	10.0	11.4	56.0
1.027500	43.5	1000.0	9.000	On	L1	10.0	12.5	56.0
1.297500	41.6	1000.0	9.000	On	L1	10.0	14.4	56.0
1.693500	40.1	1000.0	9.000	On	L1	9.9	15.9	56.0
2.292000	36.8	1000.0	9.000	On	L1	9.9	19.2	56.0

Final Result 2

Frequency (MHz)	Average (dBm)	Meas. Time (ms)	Bandwidth (kHz)	Filter	Line	Corr. (dB)	Margin (dB)	Limit (dBm)
0.195000	32.3	1000.0	9.000	On	L1	10.1	21.5	53.8
0.343500	30.7	1000.0	9.000	On	L1	10.0	18.4	49.1
0.393000	29.5	1000.0	9.000	On	L1	10.0	18.5	48.0
0.532500	27.4	1000.0	9.000	On	L1	10.0	18.6	46.0
0.618000	30.4	1000.0	9.000	On	L1	10.1	15.6	46.0
0.717000	29.2	1000.0	9.000	On	L1	10.1	16.8	46.0
0.856500	27.7	1000.0	9.000	On	L1	10.0	18.3	46.0
1.230000	25.3	1000.0	9.000	On	L1	10.0	20.7	46.0
1.284000	25.8	1000.0	9.000	On	L1	10.0	20.2	46.0
1.707000	24.8	1000.0	9.000	On	L1	9.9	21.2	46.0

[Battery Charging Mode (Battery Charger 1): NEUTRAL]



Final Result 1

Frequency (MHz)	QuasiPeak (dBμV)	Meas. Time (ms)	Bandwidth (kHz)	Filter	Line	Corr. (dB)	Margin (dB)	Limit (dBμV)
0.244500	49.1	1000.0	9.000	On	N	10.1	12.9	61.9
0.334500	47.8	1000.0	9.000	On	N	10.0	11.5	59.3
0.429000	47.7	1000.0	9.000	On	N	9.9	9.5	57.3
0.528000	47.0	1000.0	9.000	On	N	9.9	9.0	56.0
0.577500	46.9	1000.0	9.000	On	N	10.0	9.1	56.0
0.681000	45.9	1000.0	9.000	On	N	10.1	10.1	56.0
0.856500	44.7	1000.0	9.000	On	N	10.0	11.3	56.0
1.023000	42.6	1000.0	9.000	On	N	10.0	13.4	56.0
1.752000	40.9	1000.0	9.000	On	N	9.9	15.1	56.0
2.265000	34.9	1000.0	9.000	On	N	9.9	21.1	56.0

Final Result 2

Frequency (MHz)	Average (dBμV)	Meas. Time (ms)	Bandwidth (kHz)	Filter	Line	Corr. (dB)	Margin (dB)	Limit (dBμV)
0.150000	35.6	1000.0	9.000	On	N	10.2	20.4	56.0
0.204000	32.2	1000.0	9.000	On	N	10.2	21.3	53.4
0.303000	30.0	1000.0	9.000	On	N	10.1	20.2	50.2
0.393000	29.3	1000.0	9.000	On	N	10.0	18.7	48.0
0.532500	26.9	1000.0	9.000	On	N	9.9	19.1	46.0
0.577500	28.8	1000.0	9.000	On	N	10.0	17.2	46.0
0.726000	28.2	1000.0	9.000	On	N	10.1	17.8	46.0
0.955500	25.6	1000.0	9.000	On	N	10.0	20.4	46.0
1.081500	24.3	1000.0	9.000	On	N	10.0	21.7	46.0
1.707000	24.6	1000.0	9.000	On	N	9.9	21.4	46.0



CTK Co., Ltd.
The Prime Leader of Global Regulatory Certification

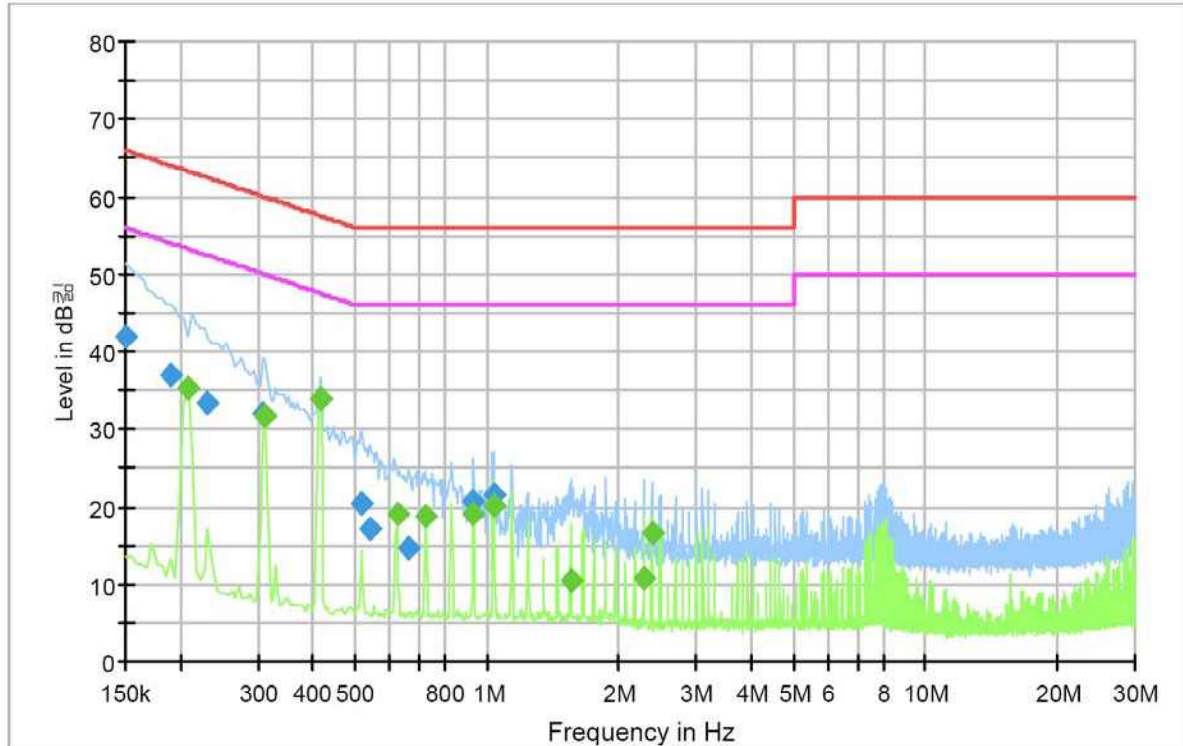
CTK Co., Ltd.

386-1, Ho-dong, Cheoin-gu, Yongin-si, Gyeonggi-do, 449-100, Korea

Tel: +82-31-339-9970 Fax: +82-31-339-9855

www.e-ctk.com

[Battery Charging Mode (Battery Charger 2): HOT]



Final Result 1

Frequency (MHz)	QuasiPeak (dBμV)	Meas. Time (ms)	Bandwidth (kHz)	Filter	Line	Corr. (dB)	Margin (dB)	Limit (dBμV)
0.150000	42.1	1000.0	9.000	On	L1	10.2	23.9	66.0
0.190500	37.1	1000.0	9.000	On	L1	10.0	27.0	64.0
0.231000	33.5	1000.0	9.000	On	L1	10.1	28.9	62.4
0.307500	32.1	1000.0	9.000	On	L1	10.1	27.9	60.0
0.415500	34.0	1000.0	9.000	On	L1	10.0	23.6	57.5
0.519000	20.5	1000.0	9.000	On	L1	10.0	35.5	56.0
0.541500	17.1	1000.0	9.000	On	L1	10.0	38.9	56.0
0.663000	14.6	1000.0	9.000	On	L1	10.1	41.4	56.0
0.933000	20.6	1000.0	9.000	On	L1	10.0	35.4	56.0
1.036500	21.6	1000.0	9.000	On	L1	10.0	34.4	56.0

Final Result 2

Frequency (MHz)	Average (dBμV)	Meas. Time (ms)	Bandwidth (kHz)	Filter	Line	Corr. (dB)	Margin (dB)	Limit (dBμV)
0.208500	35.4	1000.0	9.000	On	L1	10.1	17.9	53.3
0.312000	31.7	1000.0	9.000	On	L1	10.1	18.2	49.9
0.415500	33.9	1000.0	9.000	On	L1	10.0	13.6	47.5
0.622500	19.0	1000.0	9.000	On	L1	10.1	27.0	46.0
0.726000	18.8	1000.0	9.000	On	L1	10.1	27.2	46.0
0.933000	18.9	1000.0	9.000	On	L1	10.0	27.1	46.0
1.036500	20.1	1000.0	9.000	On	L1	10.0	25.9	46.0
1.554000	10.5	1000.0	9.000	On	L1	9.9	35.5	46.0
2.278500	10.7	1000.0	9.000	On	L1	9.9	35.3	46.0
2.377500	16.5	1000.0	9.000	On	L1	9.9	29.5	46.0



CTK Co., Ltd.
The Prime Leader of Global Regulatory Certification

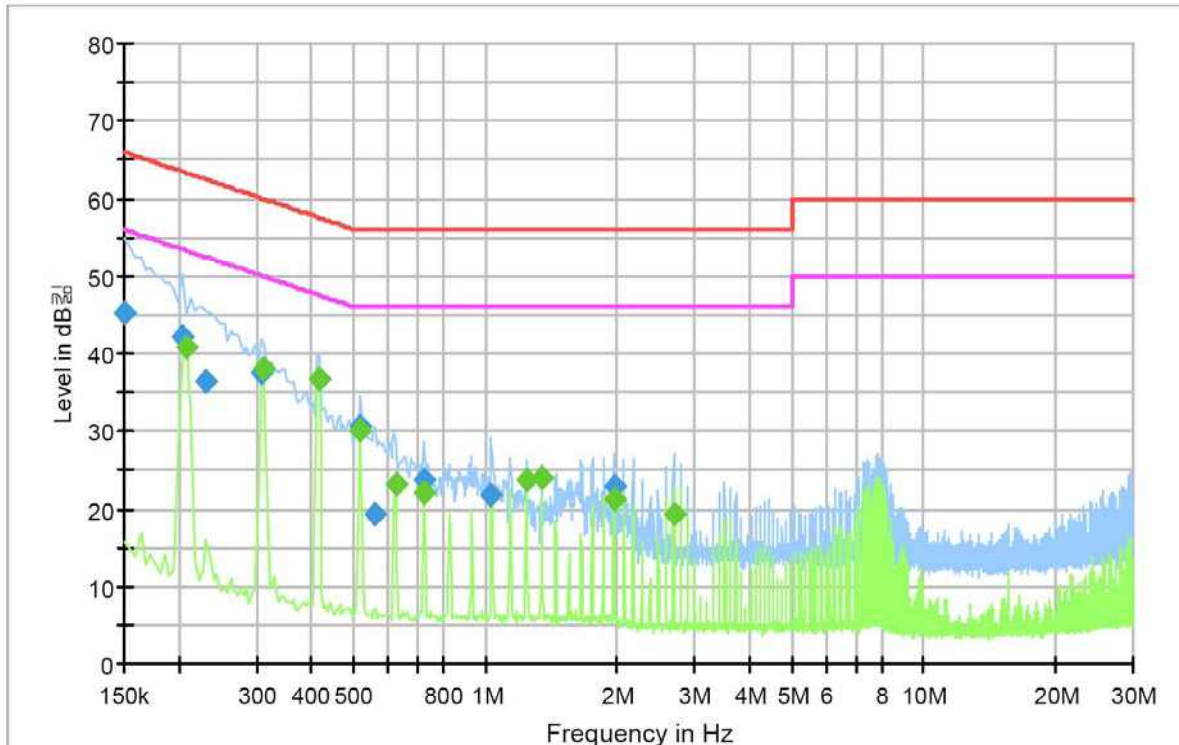
CTK Co., Ltd.

386-1, Ho-dong, Cheoin-gu, Yongin-si, Gyeonggi-do, 449-100, Korea

Tel: +82-31-339-9970 Fax: +82-31-339-9855

www.e-ctk.com

[Battery Charging Mode (Battery Charger 2): NEUTRAL]



Final Result 1

Frequency (MHz)	QuasiPeak (dBm)	Meas. Time (ms)	Bandwidth (kHz)	Filter	Line	Corr. (dB)	Margin (dB)	Limit (dBm)
0.150000	45.2	1000.0	9.000	On	N	10.2	20.8	66.0
0.204000	42.2	1000.0	9.000	On	N	10.2	21.2	63.4
0.231000	36.4	1000.0	9.000	On	N	10.2	26.0	62.4
0.307500	37.4	1000.0	9.000	On	N	10.1	22.6	60.0
0.415500	36.8	1000.0	9.000	On	N	10.0	20.7	57.5
0.519000	30.6	1000.0	9.000	On	N	9.9	25.4	56.0
0.559500	19.4	1000.0	9.000	On	N	10.0	36.6	56.0
0.721500	23.7	1000.0	9.000	On	N	10.1	32.3	56.0
1.032000	21.7	1000.0	9.000	On	N	10.0	34.3	56.0
1.963500	22.9	1000.0	9.000	On	N	9.9	33.1	56.0

Final Result 2

Frequency (MHz)	Average (dBm)	Meas. Time (ms)	Bandwidth (kHz)	Filter	Line	Corr. (dB)	Margin (dB)	Limit (dBm)
0.208500	41.0	1000.0	9.000	On	N	10.2	12.3	53.3
0.312000	37.9	1000.0	9.000	On	N	10.1	12.0	49.9
0.415500	36.8	1000.0	9.000	On	N	10.0	10.8	47.5
0.519000	30.2	1000.0	9.000	On	N	9.9	15.8	46.0
0.622500	23.2	1000.0	9.000	On	N	10.0	22.8	46.0
0.726000	22.1	1000.0	9.000	On	N	10.1	23.9	46.0
1.239000	23.8	1000.0	9.000	On	N	10.0	22.2	46.0
1.342500	23.9	1000.0	9.000	On	N	10.0	22.1	46.0
1.963500	21.3	1000.0	9.000	On	N	9.9	24.7	46.0
2.688000	19.4	1000.0	9.000	On	N	9.9	26.6	46.0



CTK Co., Ltd.
The Prime Leader of Global Regulatory Certification

CTK Co., Ltd.

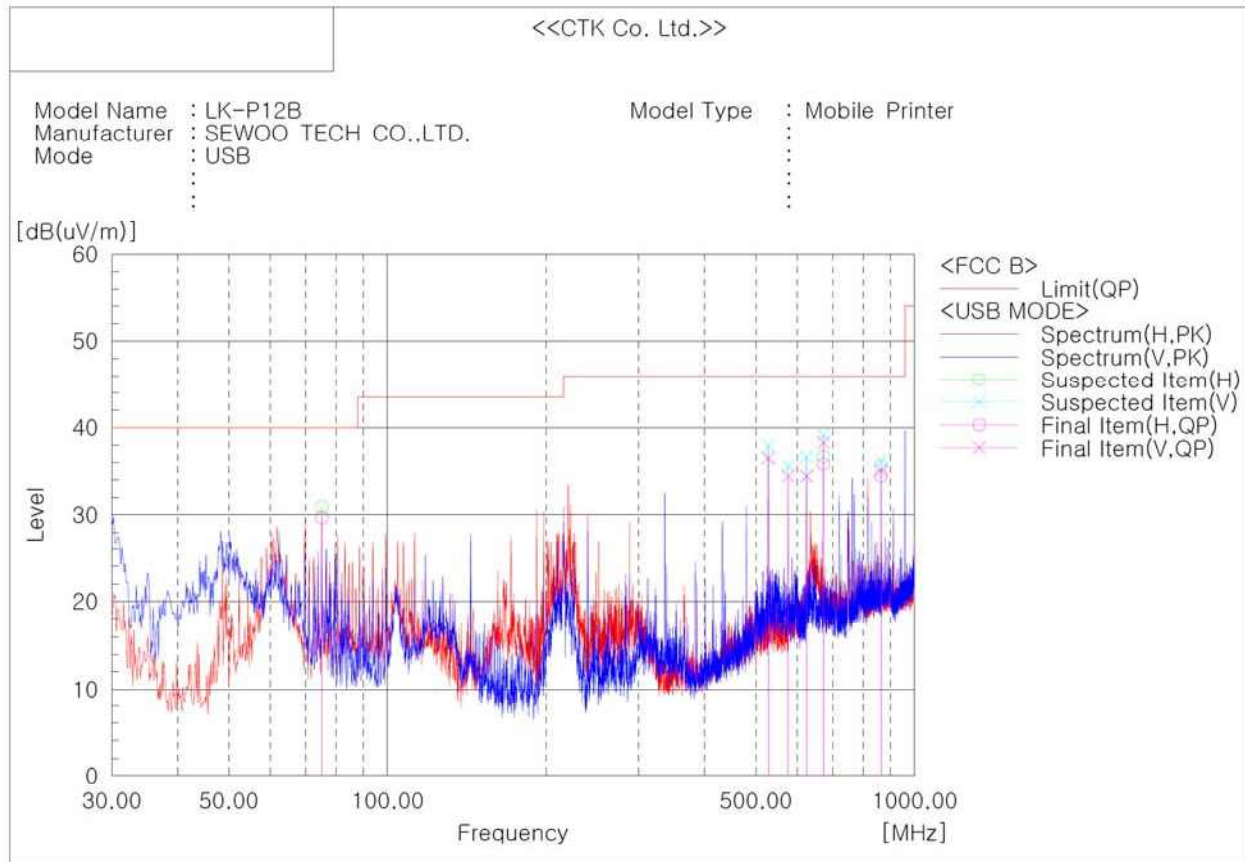
386-1, Ho-dong, Cheoin-gu, Yongin-si, Gyeonggi-do, 449-100, Korea

Tel: +82-31-339-9970 Fax: +82-31-339-9855

www.e-ctk.com

Radiated Electric Field Emissions

[USB Printing Mode]



Final Result

No.	Frequency [MHz]	(P)	Reading QP [dB(uV)]	c.f [dB(1/m)]	Result QP [dB(uV/m)]	Limit QP [dB(uV/m)]	Margin QP [dB]	Height [cm]	Angle [deg]
1	75.105	H	52.7	-23.0	29.7	40.0	10.3	205.0	108.0
2	528.095	V	46.3	-9.8	36.5	46.0	9.5	100.0	70.0
3	575.989	V	43.6	-9.2	34.4	46.0	11.6	100.0	70.0
4	624.004	V	42.8	-8.4	34.4	46.0	11.6	100.0	70.0
5	672.019	V	45.6	-7.3	38.3	46.0	7.7	100.0	220.0
6	672.019	H	43.1	-7.3	35.8	46.0	10.2	100.0	119.0
7	864.079	V	38.7	-3.6	35.1	46.0	10.9	195.0	139.0
8	864.079	H	38.0	-3.6	34.4	46.0	11.6	205.0	0.0



CTK Co., Ltd.

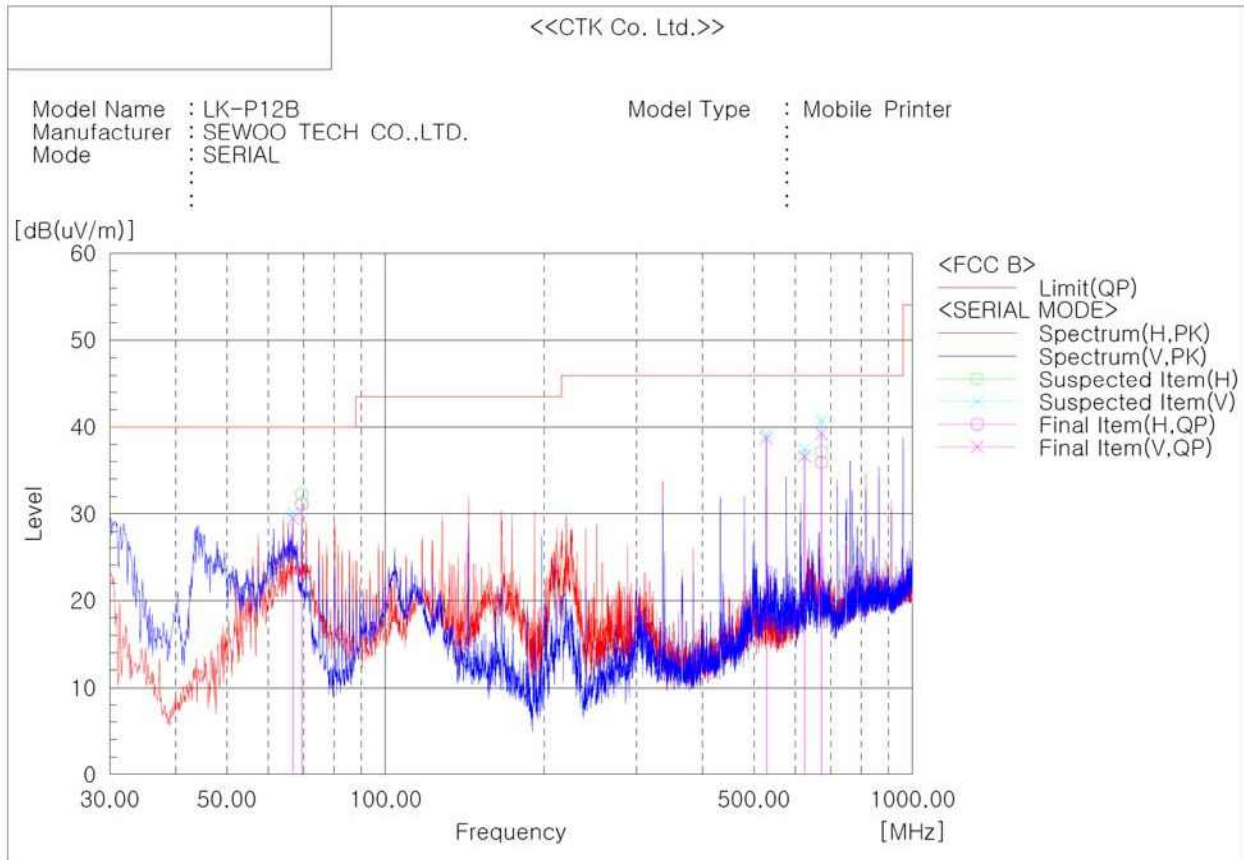
CTK Co., Ltd.

386-1, Ho-dong, Cheoin-gu, Yongin-si, Gyeonggi-do, 449-100, Korea

Tel: +82-31-339-9970 Fax: +82-31-339-9855

www.e-ctk.com

[Serial Printing Mode]



Final Result

No.	Frequency [MHz]	(P)	Reading QP [dB(uV)]	c.f [dB(1/m)]	Result QP [dB(uV/m)]	Limit QP [dB(uV/m)]	Margin QP [dB]	Height [cm]	Angle [deg]
1	66.739	V	54.6	-25.1	29.5	40.0	10.5	100.0	178.0
2	69.406	H	55.5	-24.4	31.1	40.0	8.9	304.0	295.0
3	528.095	V	48.5	-9.8	38.7	46.0	7.3	100.0	29.0
4	624.004	V	45.0	-8.4	36.6	46.0	9.4	100.0	178.0
5	672.019	V	46.5	-7.3	39.2	46.0	6.8	100.0	178.0
6	672.019	H	43.2	-7.3	35.9	46.0	10.1	100.0	280.0



CTK Co., Ltd.
The Prime Leader of Global Regulatory Certification

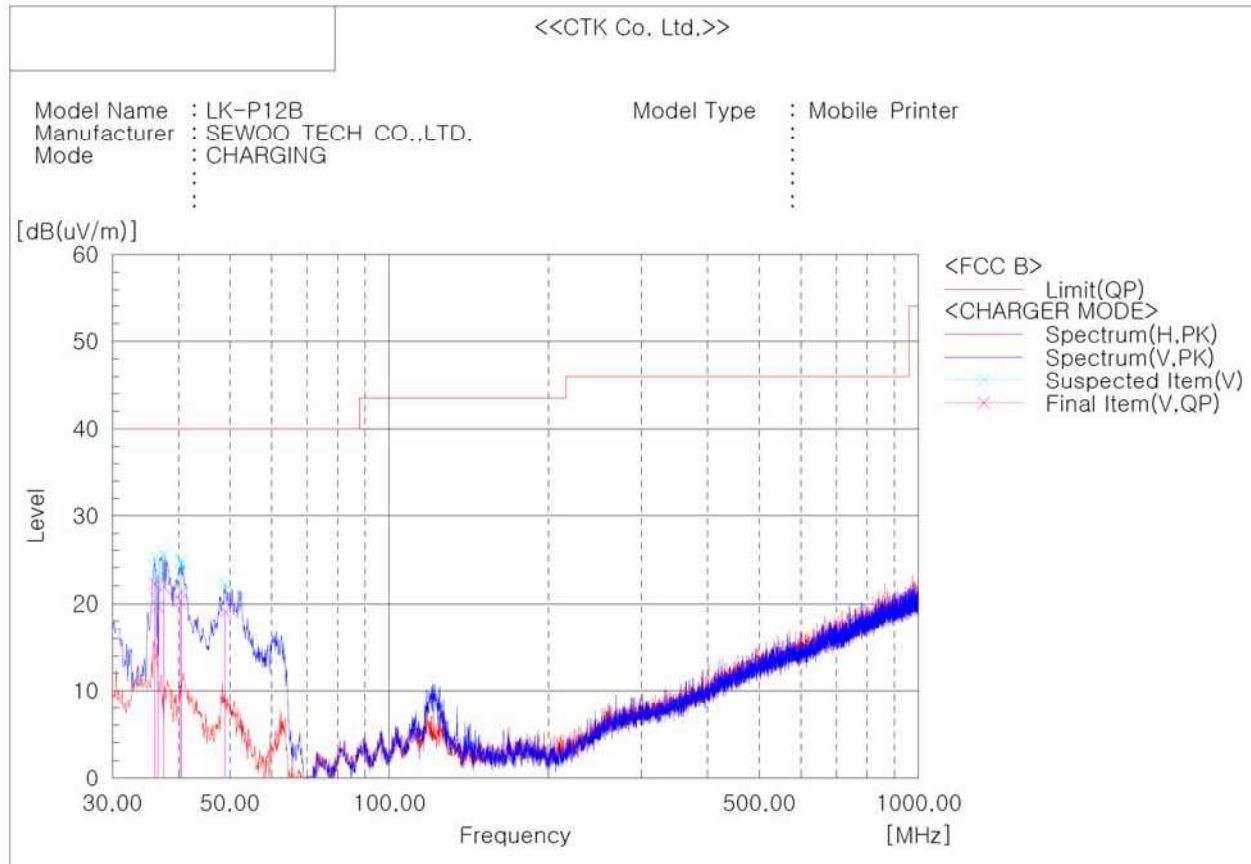
CTK Co., Ltd.

386-1, Ho-dong, Cheoin-gu, Yongin-si, Gyeonggi-do, 449-100, Korea

Tel: +82-31-339-9970 Fax: +82-31-339-9855

www.e-ctk.com

[Battery Charging Mode (Battery Charger 1)]



Final Result

No.	Frequency [MHz]	(P)	Reading QP [dB(uV)]	c.f [dB(1/m)]	Result QP [dB(uV/m)]	Limit QP [dB(uV/m)]	Margin QP [dB]	Height [cm]	Angle [deg]
1	36.063	V	37.1	-14.9	22.2	40.0	17.8	294.0	183.0
2	36.548	V	34.9	-15.2	19.7	40.0	20.3	294.0	183.0
3	37.518	V	37.5	-15.7	21.8	40.0	18.2	194.0	0.0
4	49.036	V	41.2	-22.1	19.1	40.0	20.9	294.0	221.0
5	40.306	V	37.7	-17.4	20.3	40.0	19.7	194.0	64.0
6	40.549	V	38.8	-17.5	21.3	40.0	18.7	194.0	64.0



CTK Co., Ltd.
The Prime Leader of Global Regulatory Certification

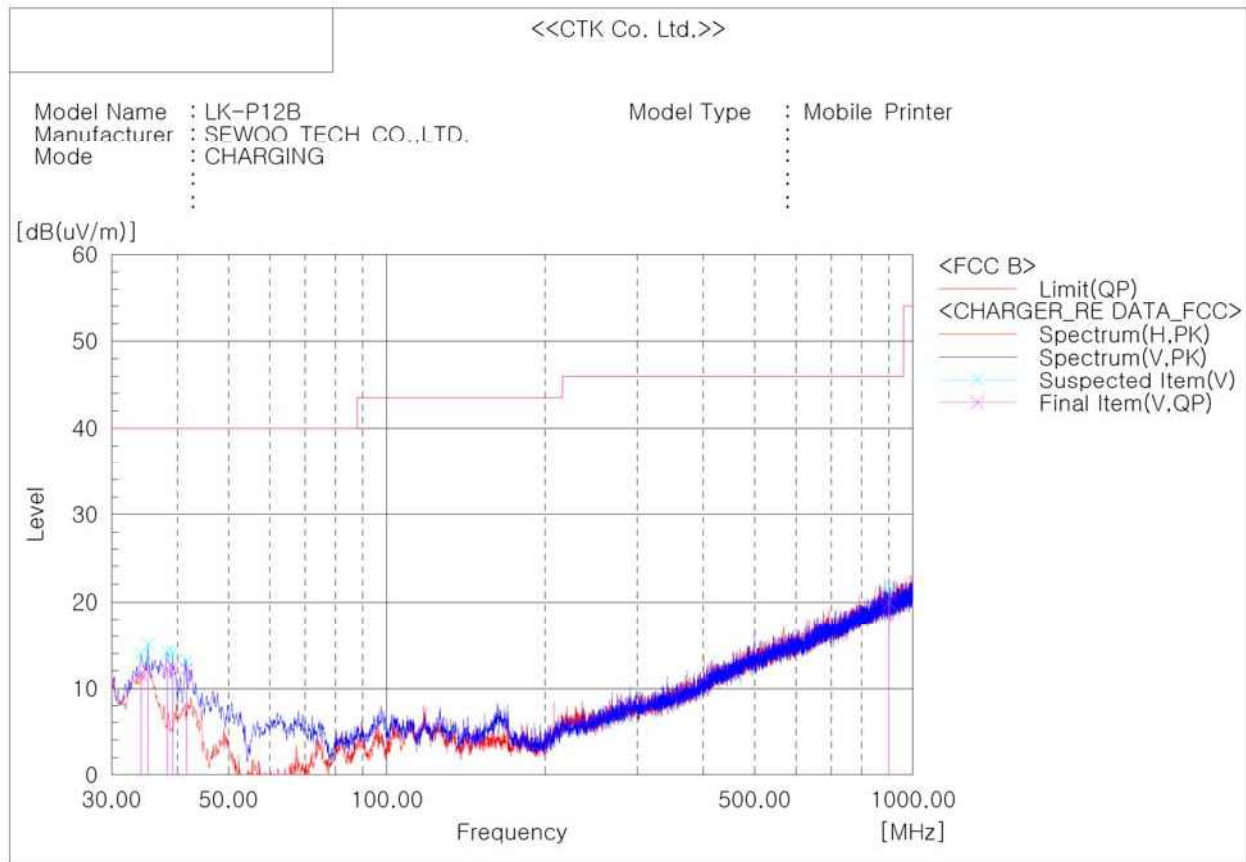
CTK Co., Ltd.

386-1, Ho-dong, Cheoin-gu, Yongin-si, Gyeonggi-do, 449-100, Korea

Tel: +82-31-339-9970 Fax: +82-31-339-9855

www.e-ctk.com

[Battery Charging Mode (Battery Charger 2)]



Final Result

No.	Frequency [MHz]	(P)	Reading QP [dB(uV)]	c.f [dB(1/m)]	Result QP [dB(uV/m)]	Limit QP [dB(uV/m)]	Margin QP [dB]	Height [cm]	Angle [deg]
1	34.123	V	25.6	-14.0	11.6	40.0	28.4	100.0	252.0
2	35.214	V	26.3	-14.4	11.9	40.0	28.1	100.0	102.0
3	38.245	V	28.4	-16.2	12.2	40.0	27.8	100.0	177.0
4	39.215	V	29.2	-16.8	12.4	40.0	27.6	100.0	0.0
5	41.640	V	30.3	-18.1	12.2	40.0	27.8	100.0	139.0
6	901.424	V	22.8	-2.9	19.9	46.0	26.1	195.0	221.0



CTK Co., Ltd.

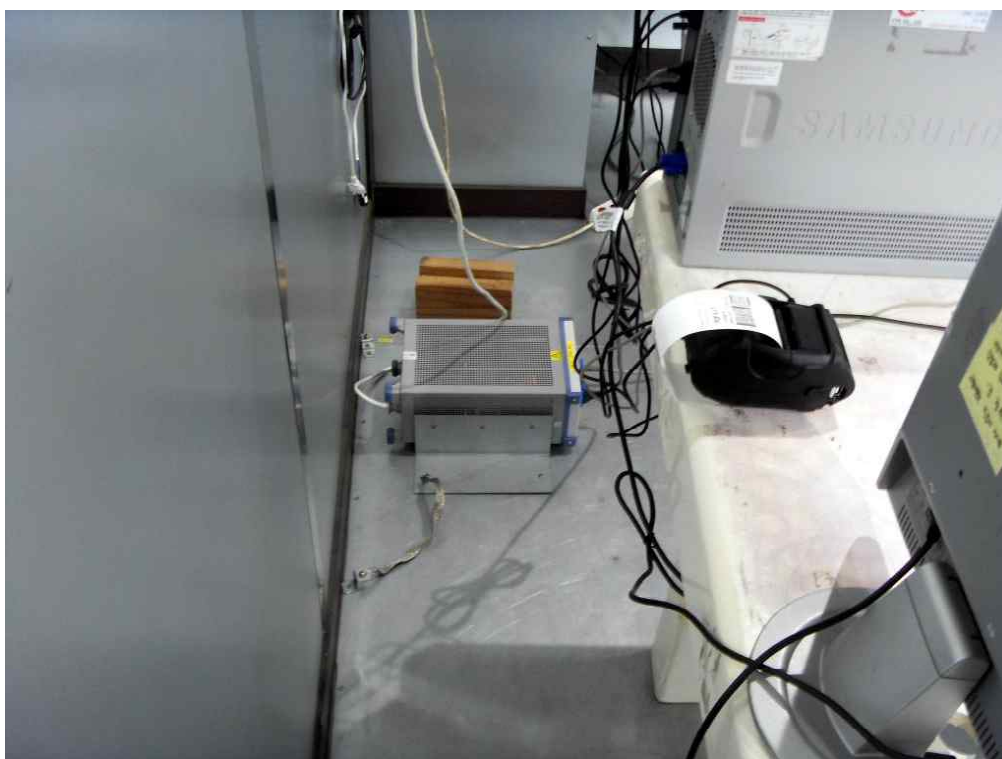
386-1, Ho-dong, Cheoin-gu, Yongin-si, Gyeonggi-do, 449-100, Korea

Tel: +82-31-339-9970 Fax: +82-31-339-9855

www.e-ctk.com

APPENDIX B - Test Setup Photos and Configuration

Conducted Voltage Emissions





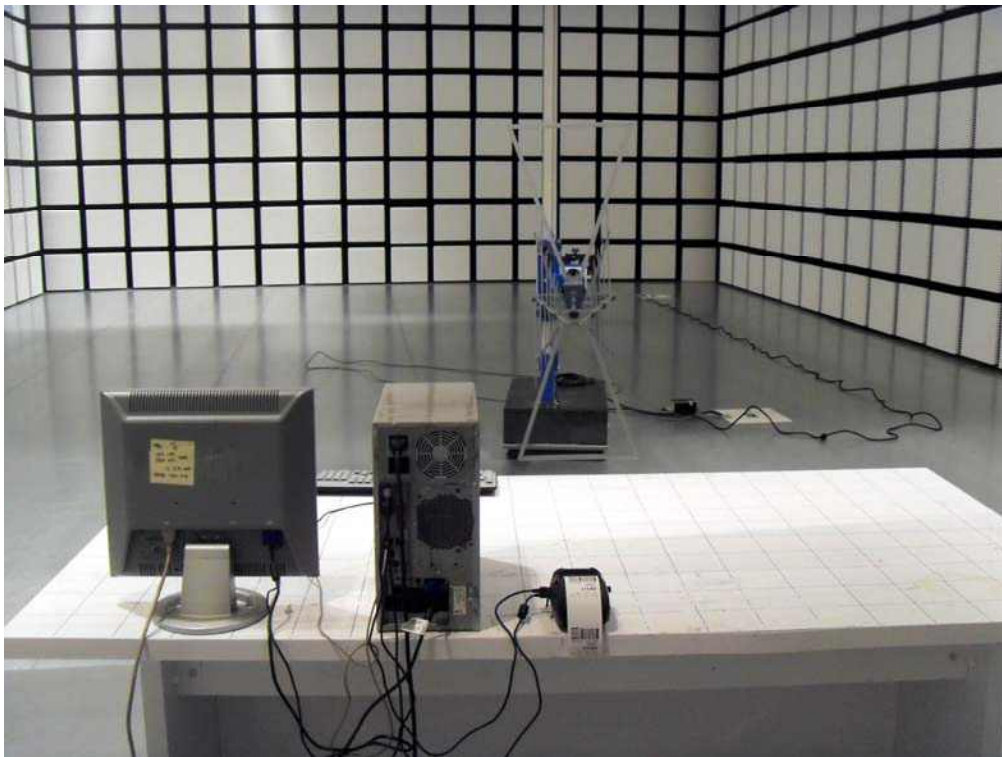
CTK Co., Ltd.

386-1, Ho-dong, Cheoin-gu, Yongin-si, Gyeonggi-do, 449-100, Korea

Tel: +82-31-339-9970 Fax: +82-31-339-9855

www.e-ctk.com

Radiated Electric Field Emissions





CTK Co., Ltd.
The Prime Leader of EUTech Regulatory Certification

CTK Co., Ltd.

386-1, Ho-dong, Cheoin-gu, Yongin-si, Gyeonggi-do, 449-100, Korea

Tel: +82-31-339-9970 Fax: +82-31-339-9855

www.e-ctk.com

APPENDIX C – EUT Photographs



CTK Co., Ltd.
The Prime Leader of Unilateral Regulatory Certification

CTK Co., Ltd.

386-1, Ho-dong, Cheoin-gu, Yongin-si, Gyeonggi-do, 449-100, Korea

Tel: +82-31-339-9970 Fax: +82-31-339-9855

www.e-ctk.com





CTK Co., Ltd.
The Prime Leader of Global Regulatory Certification

CTK Co., Ltd.

386-1, Ho-dong, Cheoin-gu, Yongin-si, Gyeonggi-do, 449-100, Korea

Tel: +82-31-339-9970 Fax: +82-31-339-9855

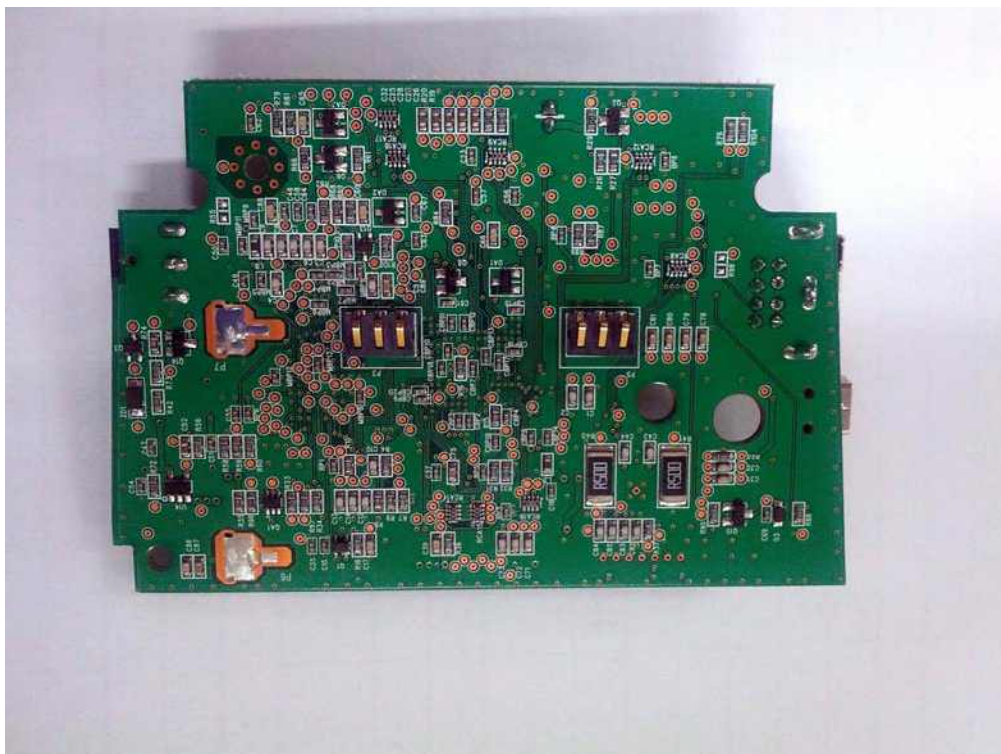
www.e-ctk.com



EUT Internal Photographs



PCB





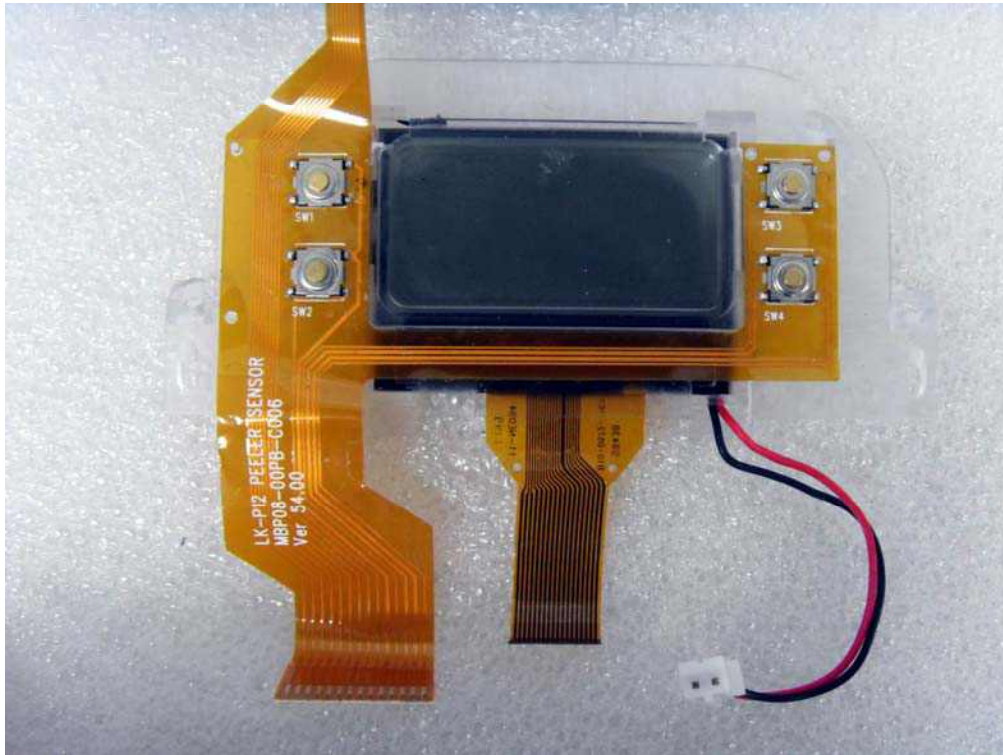
CTK Co., Ltd.
The Prime Leader of Global Regulatory Certification

CTK Co., Ltd.

386-1, Ho-dong, Cheoin-gu, Yongin-si, Gyeonggi-do, 449-100, Korea

Tel: +82-31-339-9970 Fax: +82-31-339-9855

www.e-ctk.com





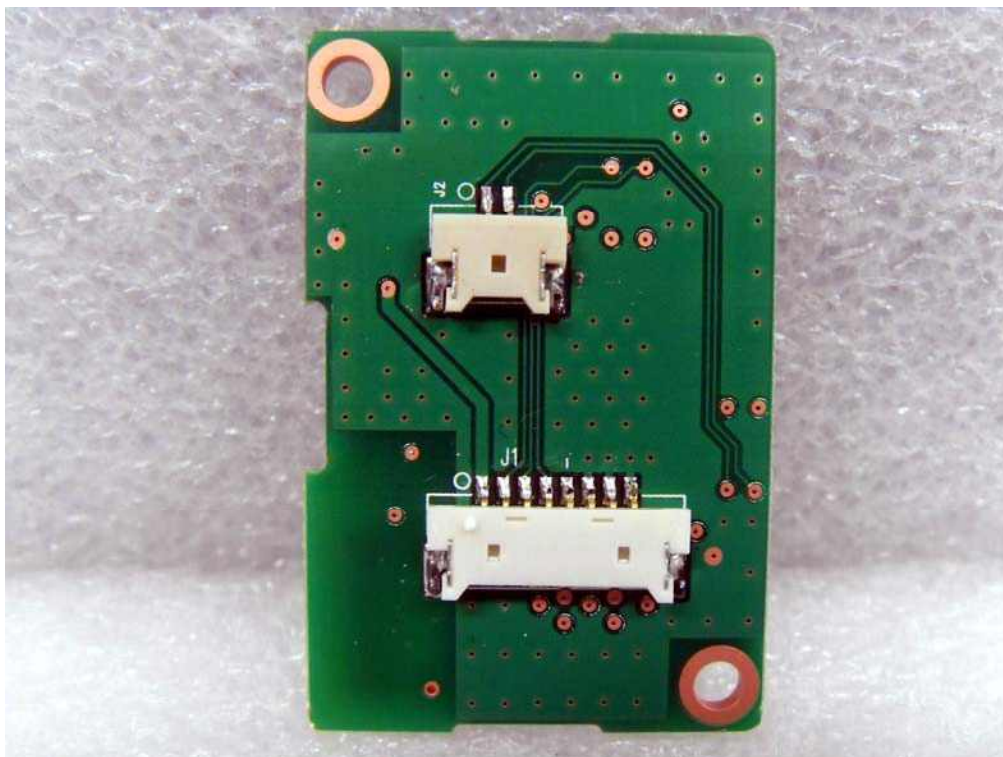
CTK Co., Ltd.
The Prime Leader of Global Regulatory Certification

CTK Co., Ltd.

386-1, Ho-dong, Cheoin-gu, Yongin-si, Gyeonggi-do, 449-100, Korea

Tel: +82-31-339-9970 Fax: +82-31-339-9855

www.e-ctk.com



Battery Charger 1&2

[Battery Charger 1]



[Battery Charger 2]



Battery





CTK Co., Ltd.
The Prime Leader of Global Regulatory Certification

CTK Co., Ltd.

386-1, Ho-dong, Cheoin-gu, Yongin-si, Gyeonggi-do, 449-100, Korea





Tel: +82-31-339-9970

Fax: +82-31-339-9855

www.e-ctk.com

Label and Location



	sewoo	MODEL :LK-P12B Country of Origin : South Korea
<p>This device complies with Part 15 of the FCC Rules. Operation is subject to the following two conditions: 1) this device may not cause harmful interference, and 2) this device must accept any interference that may cause undesired operations. This Class B digital apparatus meets all requirements of the Canadian Interference Causing Equipment Regulations. Cet appareil numérique de la classe B respecte toutes les exigences du Règlement sur le matériel brouilleur du Canada.</p>		
FCC ID: WF5LKP12B		1. 기기명칭 : 무선데이터 통신시스템용 무선기기
IC ID: 9080ALKP12B		2. 인증번호 : KCC-CMM-SWP-LK-P12B
CE 2280		3. 인증받은자의 상호 : (주)세우테크
		4. 제조자 / 제조국가 : (주)세우테크/한국
		※ 해당 무선설비는 운용 중 전파혼신 가능성이 있음
		
<p>UL LISTED I.T.E. 9M03 E159381</p>		