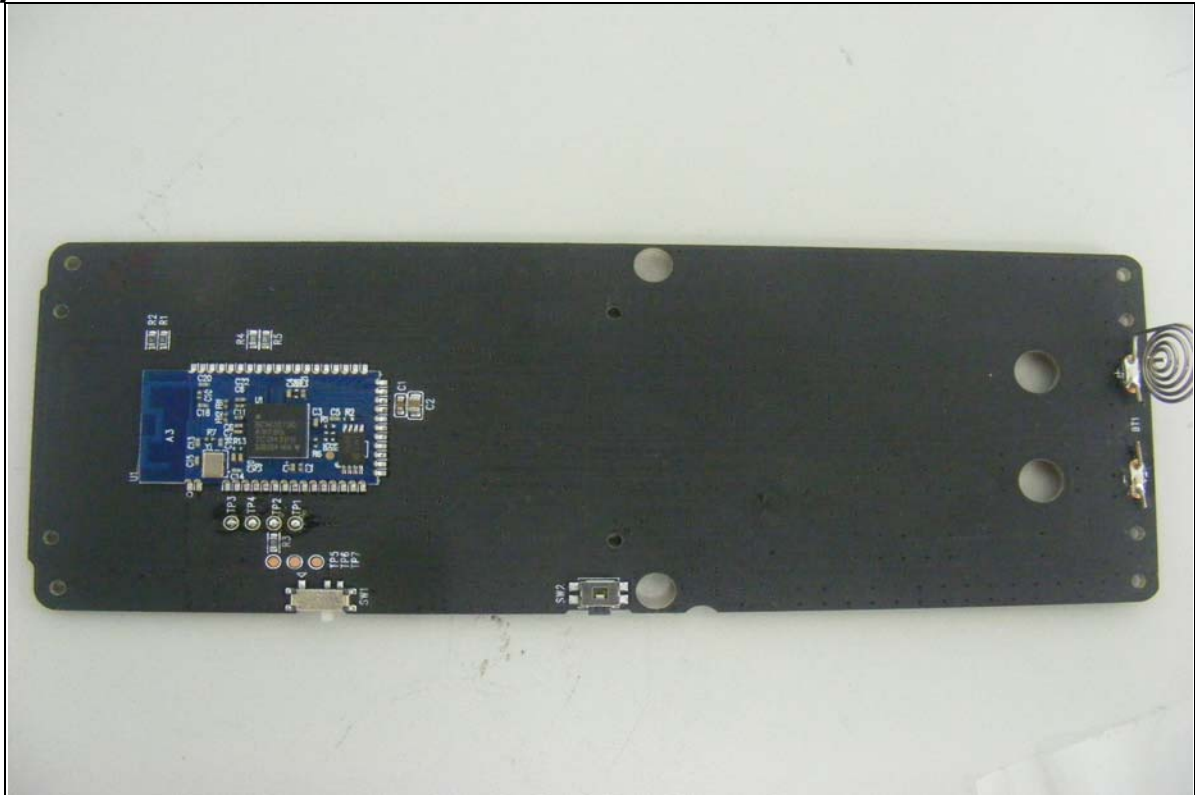


Internal photos of EUT

Top view of EUT



Top view of Main PCB



Bottom view of Main PCB



Side view of Main PCB



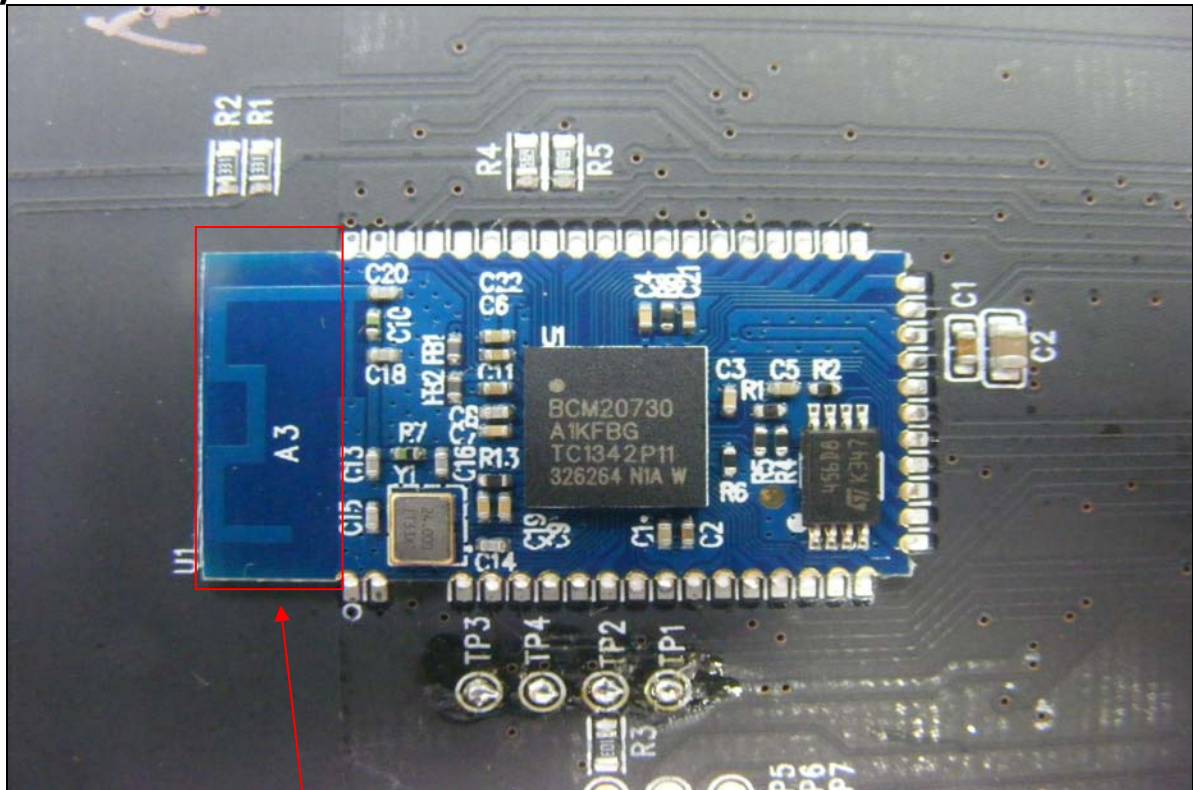
Top view of PCB pattern (Main PCB)



Bottom view of PCB pattern (Main PCB)



Top view of Module & Antenna



PCB Antenna

Side view of Module (Fixed on the main PCB)

