

F C C - TEST REPORT

REPORT NO.: 50299

FCC – Test Report**No. 50299**

Date: 2008-06-18

Page 2 of 13

**FCC listed testlab
acc. to Section 2.948 of the FCC - Rules****Product** : Aquaclean**Product Class** : Part 18 Consumer Device**Brand Name** : --**Model** : 72060**Importer** : RABBIT TANAKA CORPORATION LIMITED



FCC – Test Report

No. 50299

Date: 2008-06-18

Page 3 of 13

TABLE OF CONTENTS

1. Cover sheet
2. Introduction
3. Table of Contents
4. Laboratory Report
5. Test Location and Summary of Test Results
6. Test Equipment List
7. Radiated Emission Test Configuration
8. Conducted Emission Test Configuration
9. Test Procedure
10. Test Results
- 11-12. Measurement Data – Conducted Emission
13. Photograph of the Sample

FCC – Test Report**No. 50299**

Date: 2008-06-18

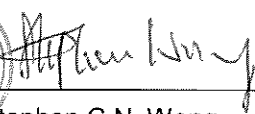
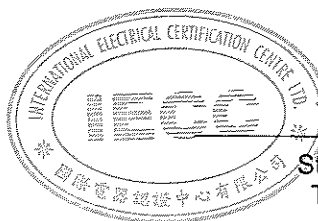
Page 4 of 13

LABORATORY - REPORT**APPLICANT:**

RABBIT TANAKA CORPORATION LIMITED

ADDRESS:7/F., Block A, MP Industrial Centre
18 Ka Yip Street
Siu Sai Wan
Hong Kong**DATE OF SAMPLE RECEIVED:** 2008-06-12**DATE OF TESTING:** 2008-06-16 to 2008-06-18**DESCRIPTION OF SAMPLE:**

Product: Aquaclean
Product class: Part 18 Consumer Device
Model no.: 72060
Rating: AC/DC adaptor : KSLFC1200100W1US,
Input : AC 100-240V 50/60Hz 0.3A; Output : DC 12V 1.0A

CONDITION OF TEST SAMPLE: The received sample was under good condition.**INVESTIGATIONS
REQUESTED:**Measurements to the relevant clauses of F.C.C. Rules and Regulations
Part 18 – Industrial, Scientific, and Medical Equipment**RESULTS:** See the attached test sheets**CONCLUSIONS:** From the measurement data obtained, the tested sample was considered to have **COMPLIED** with the requirements for the relevant clauses of Federal Communications Commission Rules as specified above.
Stephen C.N. Wong
Technical Manager

FCC – Test Report

No. 50299

Date: 2008-06-18

Page 5 of 13

Test Location

International Electrical Certification Centre Ltd.
Unit 602-605, 31 Lok Yip Road, On Lok Tsuen, Fanling, N.T., Hong Kong
Tel : +852 23052570
Fax : +852 27564480
Email : info@iecc.com.hk

Summary of Test Results

Radiated Emission:

Test result: N.A.
Test data: N.A.

Conducted Emission:

Test result: O.K.
Test data: See attached data sheet

FCC – Test Report

No. 50299

Date: 2008-06-18

Page 6 of 13

TEST EQUIPMENT LIST

Equipment	Manufacturer	Model	Serial No.	Last Calibration Date	Next Calibration Date
Test Receiver	Rohde & Schwarz	ESHS 30	839667/002	22/10/2007	21/10/2008
Artificial Mains Network (LISN)	Schwarzbeck	NSLK 8127 / NNLA 8119	8127312	02/11/2007	01/11/2008
Impulse Limiter	Rohde & Schwarz	ESH-3-Z2	--	30/03/2007	29/03/2009

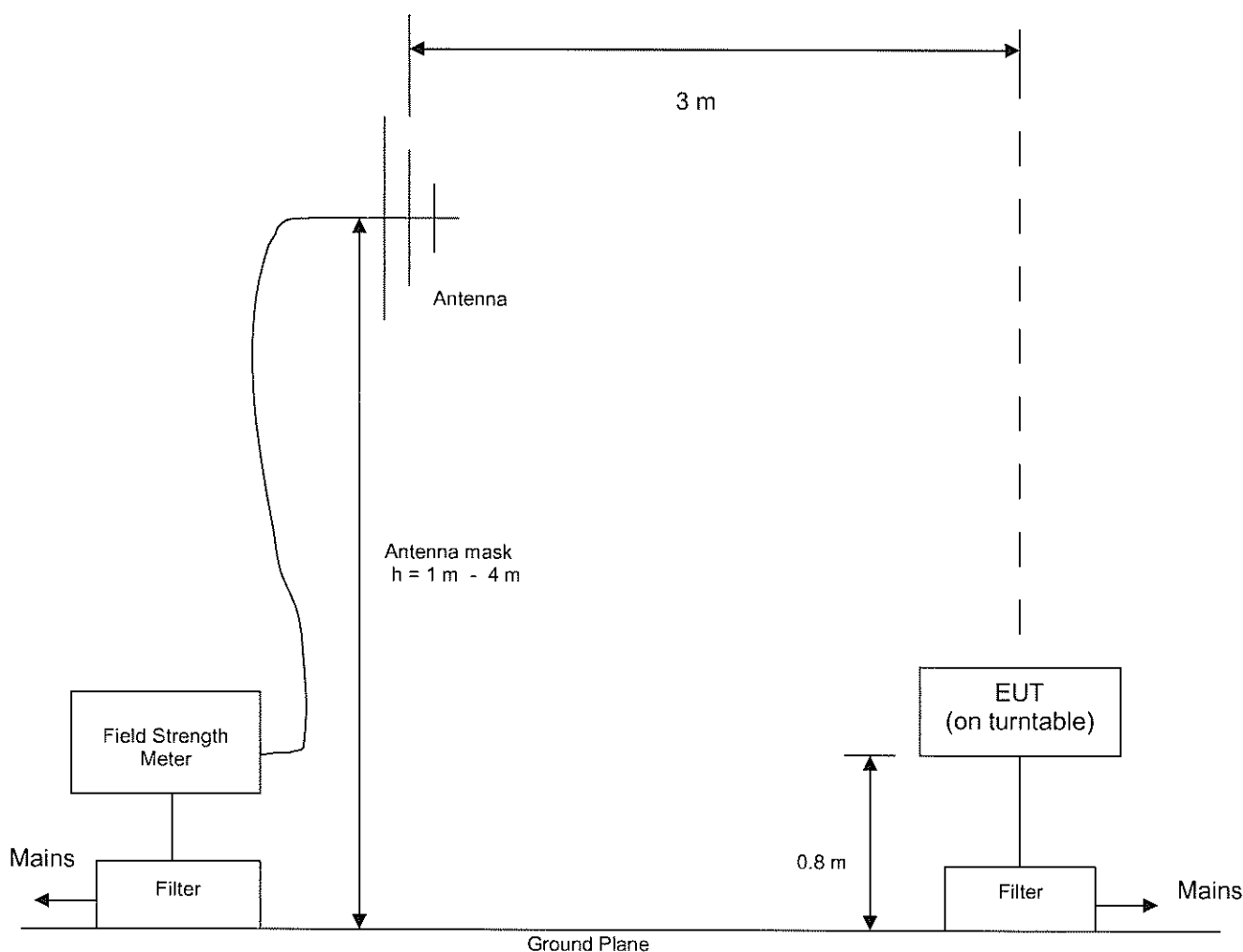
FCC – Test Report

No. 50299

Date: 2008-06-18

Page 7 of 13

Radiated Emission Test Setup (3 m distance) (> 30MHz)



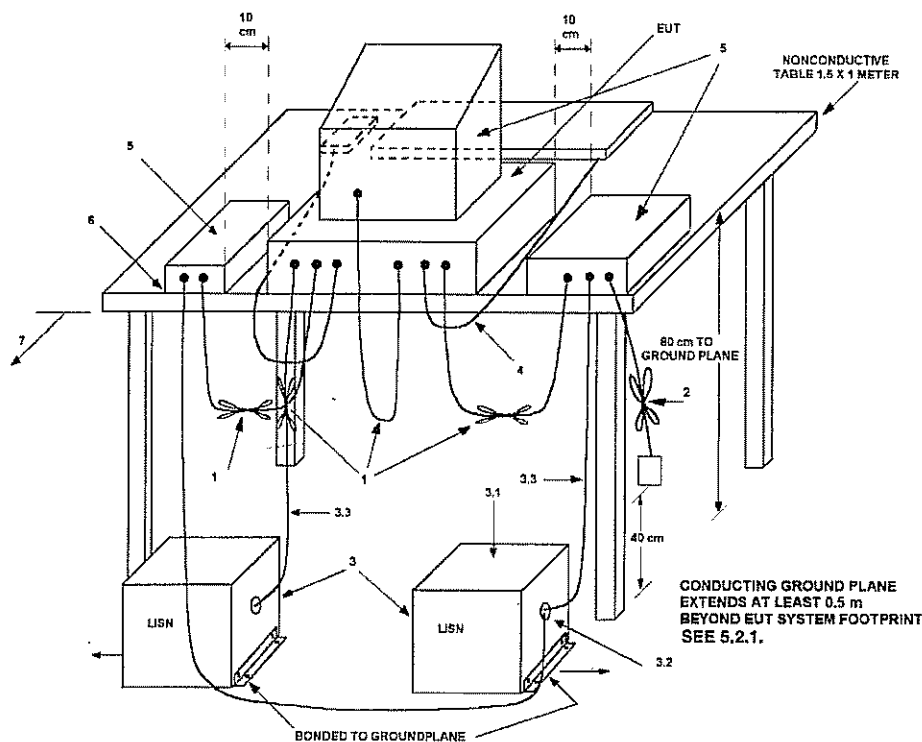
FCC – Test Report

Date: 2008-06-18

No. 50299

Page 8 of 13

Conducted Emission Test Setup



LEGEND:

- 1) Interconnecting cables that hang closer than 40 cm to the groundplane shall be folded back and forth in the center forming a bundle 30 to 40 cm long (see 6.1.4 and 11.2.4).
- 2) I/O cables that are not connected to a peripheral shall be bundled in the center. The end of the cable may be terminated, if required, using the correct terminating impedance. The overall length shall not exceed 1 m (see 6.1.4).
- 3) EUT connected to one LISN. Unused LISN measuring port connectors shall be terminated in 50 Ω. LISN can be placed on top of, or immediately beneath, reference groundplane (see 5.2.3 and 7.2.1).
 - 3.1) All other equipment powered from additional LISN(s).
 - 3.2) Multiple outlet strip can be used for multiple power cords of non-EUT equipment.
 - 3.3) LISN at least 80 cm from nearest part of EUT chassis.
- 4) Cables of hand-operated devices, such as keyboards, mice, etc., shall be placed as for normal use (See 6.2.1.3 and 11.2.4).
- 5) Non-EUT components of EUT system being tested (see also Figure 13).
- 6) Rear of EUT, including peripherals, shall all be aligned and flush with rear of tabletop (see 6.2.1.1 and 6.2.1.2).
- 7) Rear of tabletop shall be 40 cm removed from a vertical conducting plane that is bonded to the groundplane (see 5.2.2 for options).

FCC – Test Report**No. 50299**

Date: 2008-06-18

Page 9 of 13

Test Procedure**Radiated Emission :**

According to Section 18.309, for products with operation frequency below 1.705 MHz, field strength measurements are conducted up to 30MHz. No field strength limits is specified in Section 18.305 for measurements below 30MHz.

In view of the above, since the test model is operated at 83 kHz, no field strength measurement is required.

Note : The Open Area Test Site located at IECC was placed on file with the FCC Pursuant to Section 2.948 of the FCC Rules (FCC Registration No. : 97774).

Conducted Emission :

The EUT was tested according to FCC Measurement Procedure MP-5 for the requirements of FCC Part 18 Subpart C Section 18.307.

During the test, the sample was placed on a wooden table and operated with the AC/DC adaptor KSLFC1200100W1US connected to the supply at AC 120V 60Hz via the LISN. The table is 0.8 meter above the floor. The LISN was connected to the test receiver for conducted emission measurement (450kHz – 30MHz). The measurement was conducted after the lamp was turned on for more than 30 minutes for warm up purpose.

FCC – Test Report**No. 50299**

Date: 2008-06-18

Page 10 of 13

Test Results**Conducted Emission :**

Test Requirement: FCC Part 18 Subpart C Section 18.307

Test Method: FCC Measurement Procedure MP-5

Frequency Range: 450kHz – 30MHz

Class: Class B

Detector: Quasi-Peak

Refer to page 11 - 12 for measurement data.



ISM 1 / 2

Interference Voltage 450 KHz - 30 MHz

acc. FCC PART 18 Subpart C Section 18.307 (c)

Cabin 1

Model: 72060

Spl./Ser.No.: 01/--

Client : RABBIT TANAKA

Product: AQUACLEAN

IECC-No.: 50299

Date: 18.06.08

Test equipment:

Rohde & Schwarz ESHS-30

Schwarzbeck NSLK8127

Connected sets:

--

Operating mode:

OPERATE
(L)

--

RFI suppression parts:

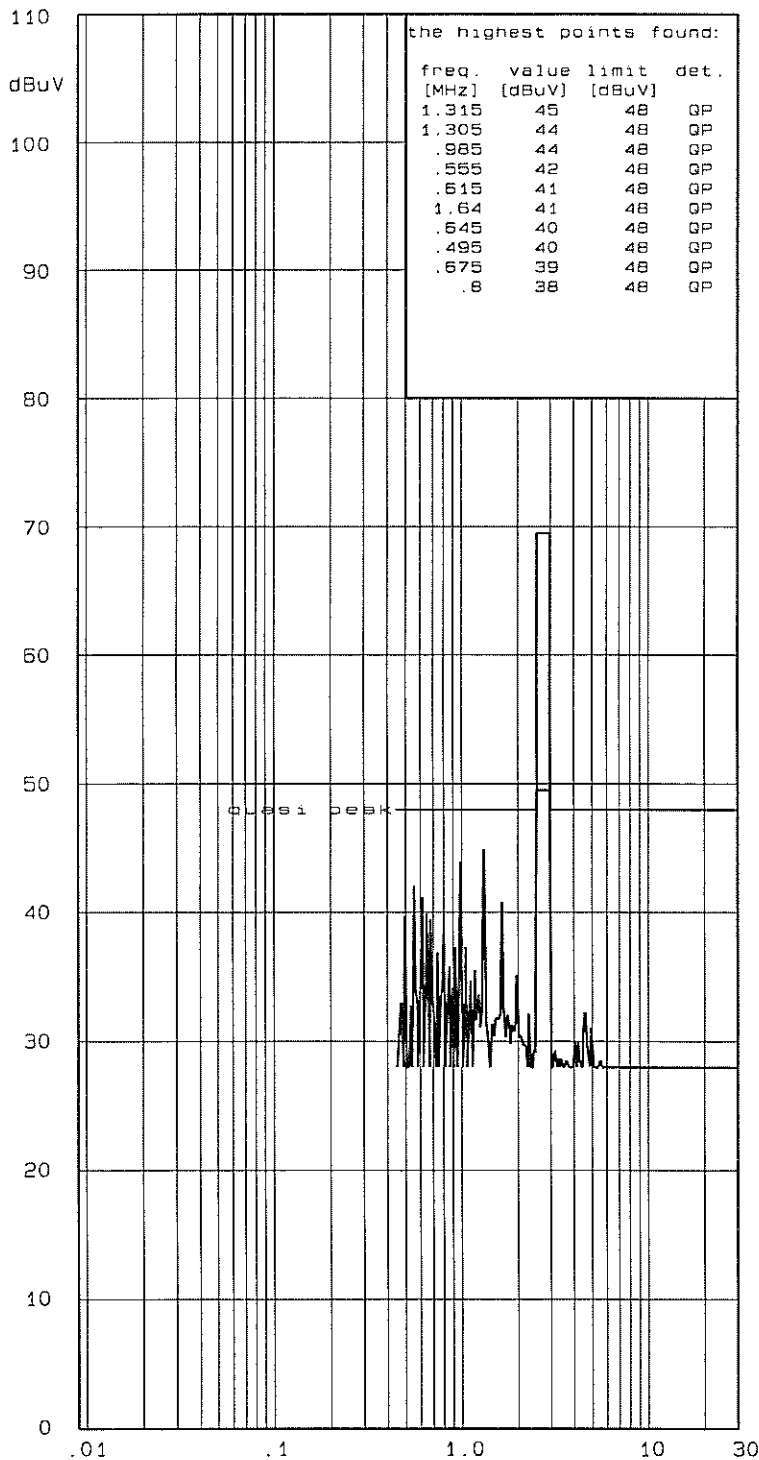
--

* two dB safety margin for
type approval necessary

Operator: ED.

Result: OK

IECC





ISM 1 / 2

Interference Voltage 450 KHz - 30 MHz

acc. FCC PART 18 Subpart C Section 18.307 (c)

Cabin 1

Model: 72060

Spl./Ser.No.: 01/--

Client : RABBIT TANAKA

Product: AQUACLEAN

IECC-No.: 50299

Date: 18.06.08

Test equipment:

Rohde & Schwarz ESHS-30

Schwarzbeck NSLK8127

Connected sets:

--

Operating mode:

OPERATE
(N)

--

--

RFI suppression parts:

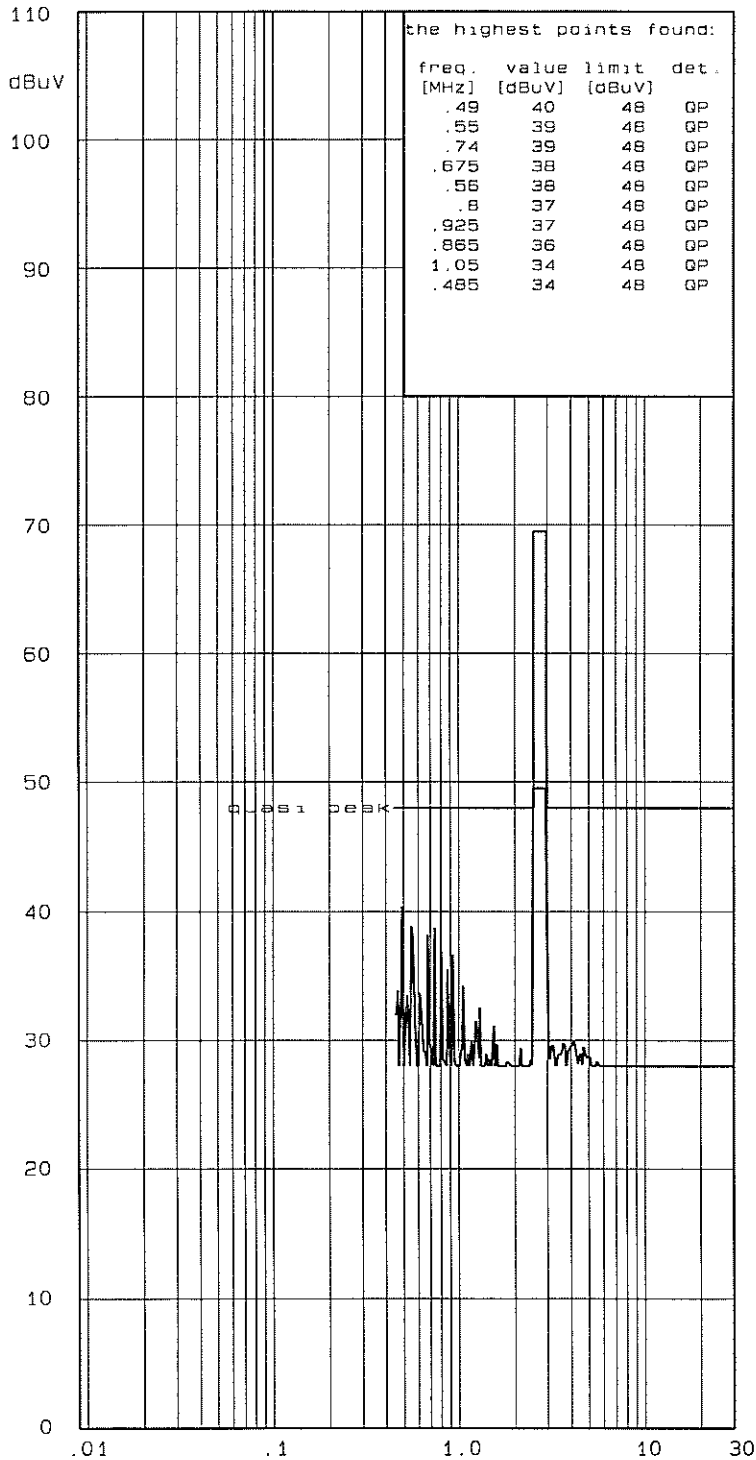
--

* two dB safety margin for
type approval necessary

Operator: ED.

Result: OK

IECC



FCC – Test Report**No. 50299**

Date: 2008-06-18

Page 13 of 13

PHOTOGRAPH OF THE SAMPLE