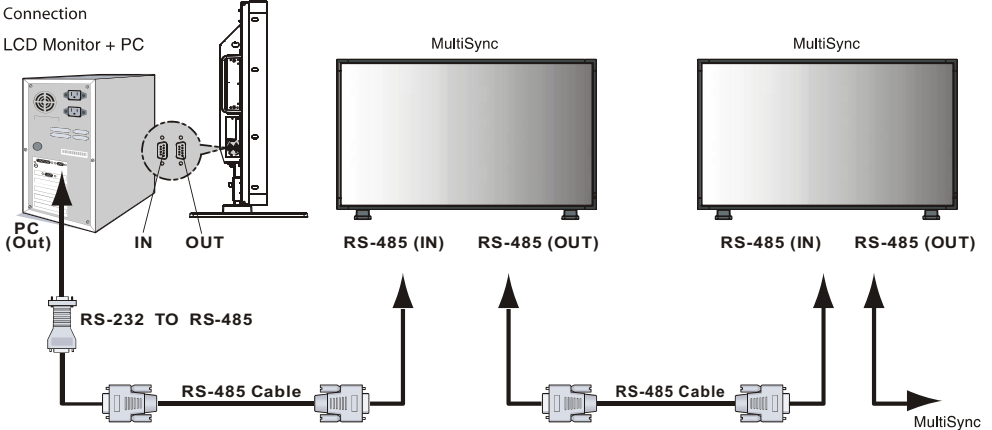


am 46-1

Quick Start

How to connect the display wall:

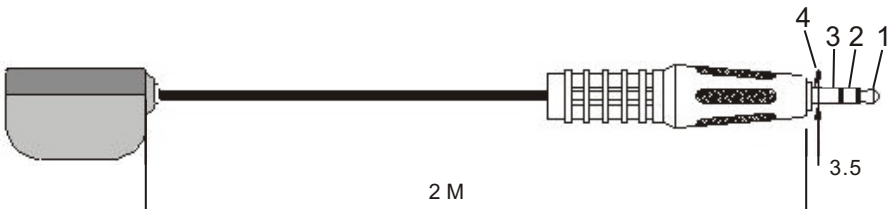


Back Interface Sketch Map



REMOTE: Infrared remote input
SERV-C: For service use(do not insert the IR Receive here)

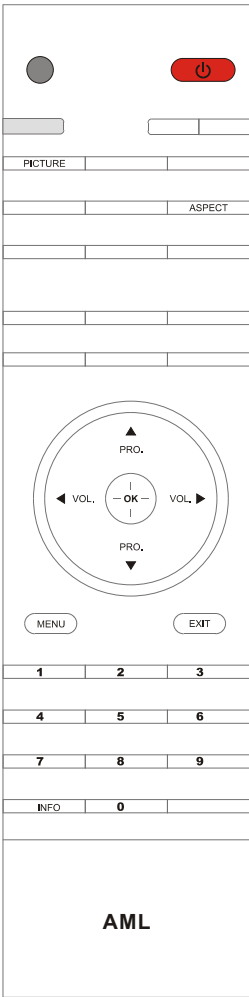
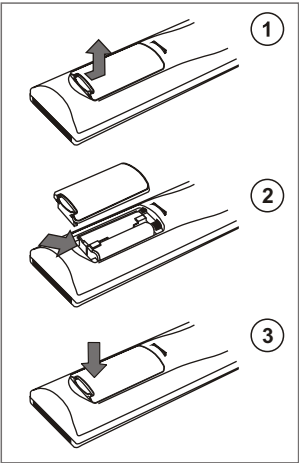
Remote Control Line



Note:1.VCC
2.IR-INPUT
3.LED
4.GND

How to load the supplied batteries into the remote control:

1. Remove the battery compartment lid on the back of the remote control.
2. Insert two AAA-sized batteries into the battery compartment, making sure the positive + and the negative - polarity line up correctly as indicated in the case.
3. Close the battery compartment lid.



Description of remote control buttons:

- ⏻(standby)** To turn the display on or off (standby).
- PICTURE** To select one of the four preset picture settings (STANDARD, BRIGHT, SOFT and PERSONAL).
- ASPECT** To select the aspect ratio (4:3 and FULL).
- PRO.▲▼** **PROGRAM UP/DOWN**
To vertically scroll in menus, select menu options in menu controls.
- VOL.◀▶** **VOLUME UP/DOWN**
To change values in menus.
- OK** To confirm a selection or enter submenu.
- MENU** To access the overview menu.
To return to the previous menu.
- EXIT** To close a menu or remove any display.
- INFO** To display status information of signal.

NOTE:
The display has the feature of auto off without signal for 15 minutes.

Menu Operation

Follow the steps below to set the menu:

1. Press the MENU button on the remote control to display the onscreen menu.
2. Press the VOL. ► or OK button on the remote control to enter the PICTURE menu.
3. Press the PRO. ▲ or ▼ button on the remote control to scroll through the picture features and use VOL. ◀ or ► to adjust:



BRIGHTNESS: to adjust until the darkest parts of the picture become as bright as you want. 50 is the default status.

CONTRAST: to increase or decrease the difference between the black portions and white portions of the picture. When contrast is increased, it helps sharpen the picture. 50 is the default status.

COLOR TEMP.: to select NORMAL, WARM or COOL picture preferences. For NORMAL, whites will maintain their whiteness; COOL will make the whites bluish; and WARM will make the whites reddish. NORMAL is the default status.

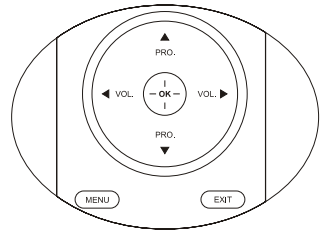
SCALE MODE: to select FULL or 4:3 aspect ratio.

PICTURE MODE: to select a picture mode among STANDARD, BRIGHT, SOFT and PERSONAL.

BACKLIGHT: to adjust the background light.

DEFAULT: to make the three options of BRIGHTNESS, CONTRAST and COLOR TEMP. back to the default value.

MONITOR_ID: to set an ID number for a certain display unit.



Follow the steps below to operate on the display wall with a PC. The user interface appears as right.

1. Power On/off: turn on/off the display wall.
2. The display wall may consist of a maximum of 25 display units. Every unit should have its ID No..

If you click on "Select ID", you can go on to select a certain ID No.;

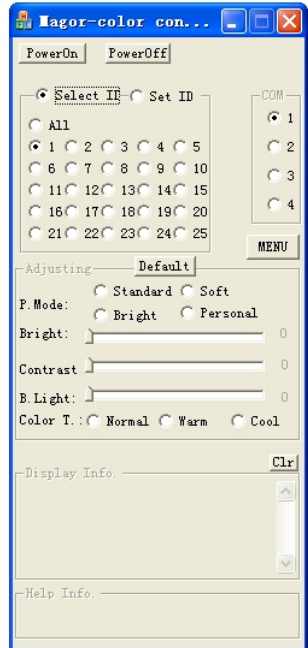
If you select All, the operation will work on all the connected display units on the whole wall.

If you select a certain ID No., the operation will work on the certain display unit.

If you click on "Set ID", there appears automatically a SET button on the right and you can go on to set an ID No. to the connected display unit by selecting a certain No. and then pressing the SET button to confirm.

Note: the "All" function is not available.

3. Inside the "COM" frame, you can select a PC terminal to connect the display wall.
Note: when a certain terminal is occupied, you can't use it. Only when it is released, you can use it by re-clicking on the the terminal.
4. Click on the "MENU" button to display the overview menu on the unit.
5. In the "Adjusting" frame, you can do the following operations:
Click to select a picture mode: **standard**, **Soft**, **Bright** or **Personal**;
Click and hold the mouse to move left or right to adjust the brightness of the picture.
Click and hold the mouse to move left or right to adjust the contrast of the picture.
Click and hold the mouse to move left or right to adjust the background light.
Click to select a color temperature: **Normal**, **Warm** or **Cool**.
If you want to restore all adjustments to the default status, just click on the "Default" button.
6. If there is any information feedback from the display units, it will appear in the display Info frame.
Note: this function is not available.
If there is information in the "Display Info" window, press "Clr", it will be cleared.
7. While you are working on the PC, every time you move the mouse to a certain position like B.Light, there is some help information displayed in the Help Info frame.



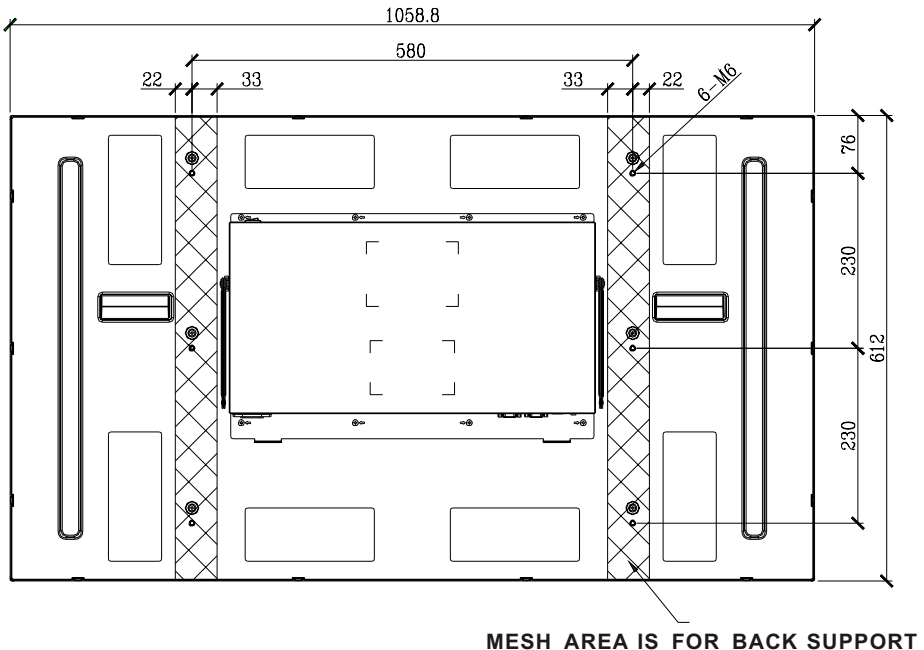
Other Information

NOTE 1: This equipment has been tested and found to comply with the limits for a Class B digital device, pursuant to Part 15 of the FCC Rules. These limits are designed to provide reasonable protection against harmful interference in a residential installation. This equipment generates, uses and can radiate radio frequency energy and, if not installed and used in accordance with the instructions, may cause harmful interference to radio communications. However, there is no guarantee that interference will not occur in a particular installation. If this equipment does cause harmful interference to radio or television reception, which can be determined by turning the equipment off and on, the user is encouraged to try to correct the interference by one or more of the following measures:

- Reorient or relocate the receiving antenna.
- Increase the separation between the equipment and receiver.
- Connect the equipment into an outlet on a circuit different from that to which the receiver is connected.
- Consult the dealer or an experienced radio/TV technician for help.

NOTE 2: Changes or modifications not expressly approved by the party responsible for compliance could void the user's authority to operate the equipment.

Bracket installation



Main unit:

Working voltage: 110-240V~ 50/60Hz

Ampere: 2.54A

Power consumption: <2W (in standby mode)

Screen size (diagonal): 116.8cm

Dimensions (WDXH): 1059mm X128mm X 612mm

Environment:

Working temperature: 5 °C~35 °C

Working humidity: 20%~80%

Storage temperature: -15 °C~45 °C

Storage humidity: 10%~90%

Display mode: On-screen display

OSD language: English

Interface:

HDMI input: 1920×1080P/60Hz Ver1.2

RS 485 in

RS 485 out

Remote in

Character:

WEIGHT: NET: 25 Kg

Brightness: 500 cd/m²

Contrast ratio: 1800:1

Viewing angle : 178°

Response time. G to G: 8ms

Scanning frequency: 50/60 Hz

Native resolution: 1920×1080p

