

# Retractable Bluetooth Headset

## UA-03 User Guide

Product Specification.....	1
Introduction.....	1
Turning Your Headset On and Off...	2
Low Battery.....	2
Pairing Your Headset.....	3
Headset Features.....	4,5
Safety Precautions.....	6
Maintenance.....	7

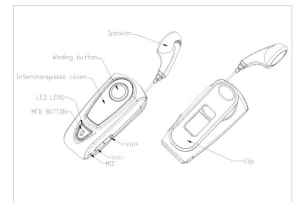


### Patented Mechanism

QD ID No.:B012556

### Product Specification:

Bluetooth Version	V2.0 Class 2 & with backward compatible v1.2
Charging Time	around 2.5 hours
Talk time & Standby Time	7 hours talk time and up to 160 hours standby time
Product range	10metres with no obstructions
Operating Temperatures	0-50°C
Battery type & capacity	Rechargeable Li-Polymer 100mAh



**Introduction:** Thank you for choosing the patented Retractable headset, inside the package we should find:

- 1x Retractable Headset
- 1x USB Car Charger with a USB cable
- 1x User guide

Before using the product, please insert the charger plug into the headset's DC Jack and connect the USB charger into a power source.

The LED will remain lit in red while charging. Once fully charged, the **LED** will turn off.

To extend the battery life, we recommend re-charge the battery every 6 months.

Charging indication will be delayed a few seconds if the headset has not been used for a while.

1

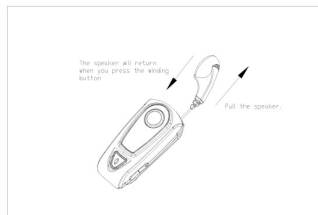
### Turning Your Headset On and Off

Press and hold the **MFB** button for three seconds to turn the headset on or off.

### Low Battery

When the headset is On and the battery capacity becomes low, the **LED** will flash in red.

The headset is designed to clip on your clothing. The earpiece length can be extended by gently pulling on the cord. The length can be retracted (shortened) by pressing the circular winding button near the top of the device.



2

### Headset Features:

These functions are only applicable to mobile phones with Bluetooth Hands-free profiles.

#### Answering a Call

Press the **MFB** once to accept a call when your mobile phone rings.

#### Ending a Call

Press the **MFB** once to end an active call.

#### Reject an incoming call

Press the **MFB** twice to reject a call when your mobile phone rings.

#### Out of range alert

When the distance of the headset and Bluetooth-enabled device is out of range, you will hear a beep in the earphone. If auto-connect is not supported, press the **MFB** once. The headset will turn OFF automatically after 3 minutes.

#### Dialing from Your Mobile phone

Dial on your mobile phone.

#### Using voice-activated dialing

If your mobile phone is equipped with a voice-activated dialing function, press the **MFB** on your headset during standby mode. When you hear a beep, say the voice tag. *(Please be sure to record voice tags in your mobile handset before attempting to use the voice-activated dialing function.)*

#### Reset

Turn off the headset, then press the Volume + button & the **MFB** at the same time for 5 seconds until the LED flashes red.

4

### Safety Precautions:

- Unintentional depression of the retractable button could result in injury from the force of the earphone retraction.
- Be careful when retracting the length of the earphone. Keep a safe distance between your face and the headset.
- Please abide by local laws regarding use of a mobile phone and headset while driving. If you must use the headset while driving, ensure that your attention and focus remains on driving safely.
- Never allow children to play with the headset. Small parts pose a choking hazard.
- Obey all signs that require an electrical device to be switched off in designated areas, such hospitals, electronically restrictive and hazardous environment.
- Turn off your headset prior to boarding aircraft. Do not use your headset in an aircraft.
- Never mount or store your headset over any air bag deployment area as serious injury could result upon deployment.
- Do not attempt to disassemble the headset as it does not contain serviceable components.
- Dispose of battery according to local regulations. Do not dispose as household waste.

6

### Pairing Your Headset:

To successfully use the Headset, it must be paired with a Bluetooth-enable device, like a mobile phone or wireless-friendly computer. Pairing procedures may vary according to device.

1. Activate your mobile phone Bluetooth function by referring to its instructions in the appropriate user guide.
2. Place the headset and the mobile phone where they are visible, within arm's length from each other.
3. Confirm headset is powered OFF.
4. Press and hold the **MFB** for 8 seconds until the headset **LED** flashes blue and red.
5. Search for headset from the Bluetooth-enable device according to the user guide of the device.
6. Enter the pre-programmed passcode "0000" and press "OK" to pair your headset and mobile phone. When pairing is complete, the headset **LED** will flash blue followed by beeps.
7. Now the headset is ready to receive calls. If the pairing does not complete within 1 minute and 30 seconds the headset will automatically turn off. If this occurs, repeat steps 2 through 7 until successful.

3

### Headset Features (continued)

#### Redialing last number called

If your headset is equipped with this function, press the **MFB** twice in standby mode.

The mobile phone will redial the last number called.

#### Transfer call from headset to mobile phone

During an active call, press the **MFB** twice to transfer call to the mobile phone.

#### Transfer call from mobile phone to headset

During an active call, press the **MFB** twice to transfer call to the headset.

#### Mute

Press & hold the Volume button for 3 seconds to mute. When mute, press & hold button again to disable the mute function.

#### Conference (3-way) calling

Please refer to the mobile phone user guide.

#### No network alert

If the service provider network is not available, the headset will beep every 20 seconds.

#### Adjust the Volume

The headset is equipped with an intelligent voice system.

There are eight volume levels possible in your headset.

To increase the volume, press the "+" button until desired volume is reached.

To decrease the volume, press the "-" button until desired volume is reached.

In a quiet environment, you can decrease the earphone volume and speak quietly.

5

### Maintenance:

- Do not yank or forcibly pull the earphone cord.
- Consider turning your headset off before placing it in your pocket or bag. If the **MFB** is accidentally pushed, your mobile phone may place an unintended call.
- Do not expose the headset to liquid or humidity, as it is not waterproof.
- Do not use abrasive cleaning solvents to clean the headset.
- Do not expose the headset to extremely high or low temperatures.
- Do not expose your headset to contact with sharp objects as this will cause scratches and damage.
- Do not stick anything inside the headset as this may damage internal components.
- Do not attempt to replace the headset's battery. It is built-in and is not removable.
- Use only the manufacturer supplied charger when charging the headset.
- Do not disassemble the charger as it may expose you to dangerous voltages or other risks. Incorrect reassembly can cause electric shock when the headset is subsequently used.

7

# CHANNEL ENTERPRISES (H.K.) LTD.

Product Name: Retractable Bluetooth Headset

Model No.: UA-03

FCC ID: WD31515



THIS DEVICE COMPLIES WITH PART 15 THE FCC RULES.

OPERATION IS SUBJECT TO THE FOLLOWING TWO CONDITIONS:

- (1) THIS DEVICE MAY NOT CAUSE HARMFUL INTERFERENCE, AND
- (2) THIS DEVICE MUST ACCEPT ANY INTERFERENCE RECEIVED,  
INCLUDING INTERFERENCE THAT MAY CAUSE UNDESIRED OPERATION.

Keep dry. Precipitation, humidity, and liquids, contain minerals that will corrode electronic circuits.

Do not use or store in dusty, dirty areas.

Do not store in hot areas. High temperatures can shorten the life of electronic devices and warp or melt certain plastics.

Do not store in very cold areas. Moisture can form inside the case, which may damage electronic circuit boards.

Do not attempt to open the case. Non-expert handling of the device may damage the system.

Avoid dropping and strong impact.

Do not change or modification. It is not expressly approved by the party responsible for compliance could void the user's authority to operate the equipment.