

SAR Test Setup Photographs

Right Head Setup

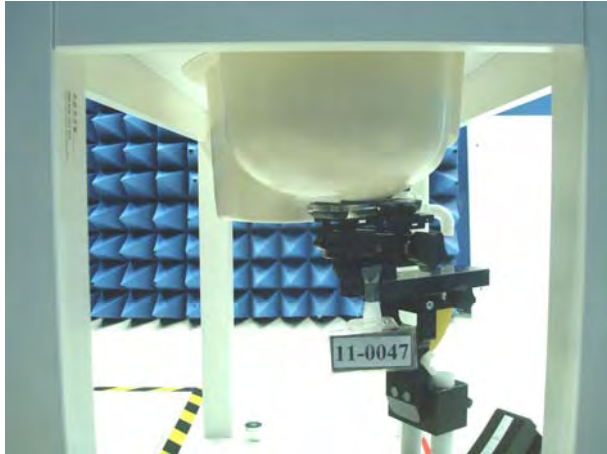


Figure 1. Right Head SAR Test Setup (Cheek)

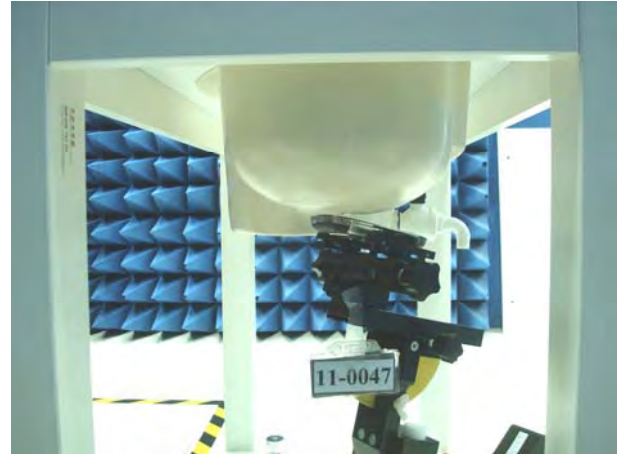
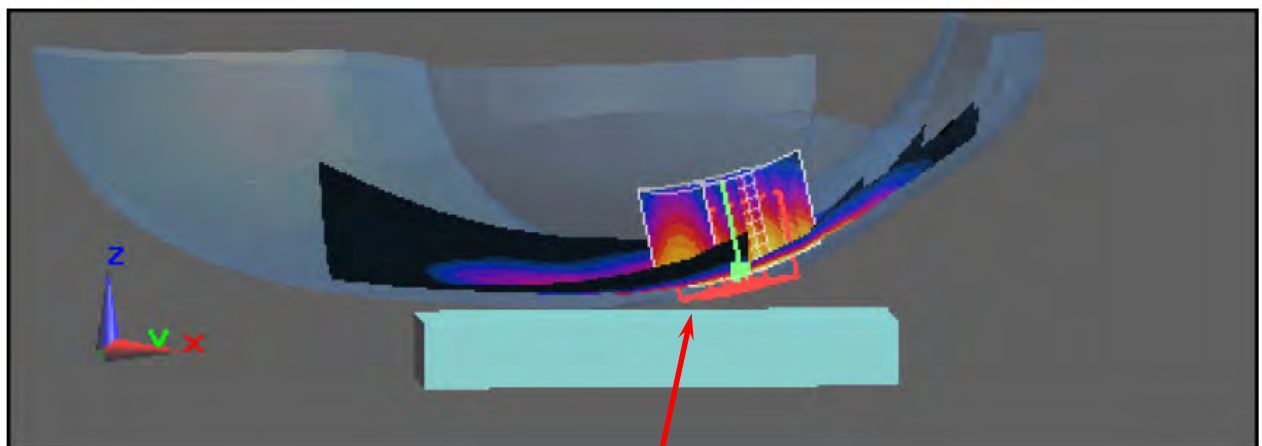


Figure 2. Right Head SAR Test Setup (Tilted)



Right Cheek

Left Head Setup



Figure 3. Left Head SAR Test Setup (Cheek)

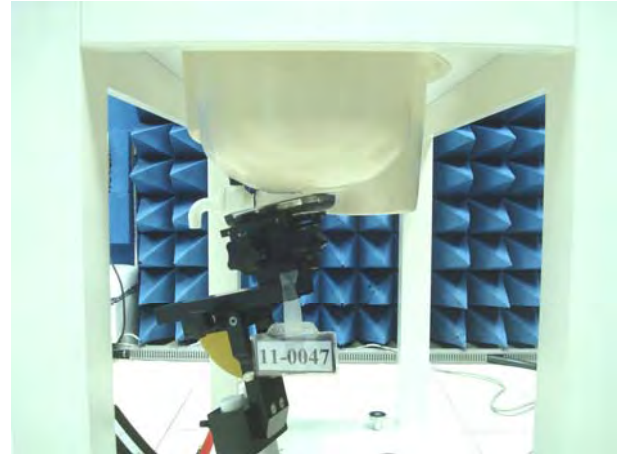
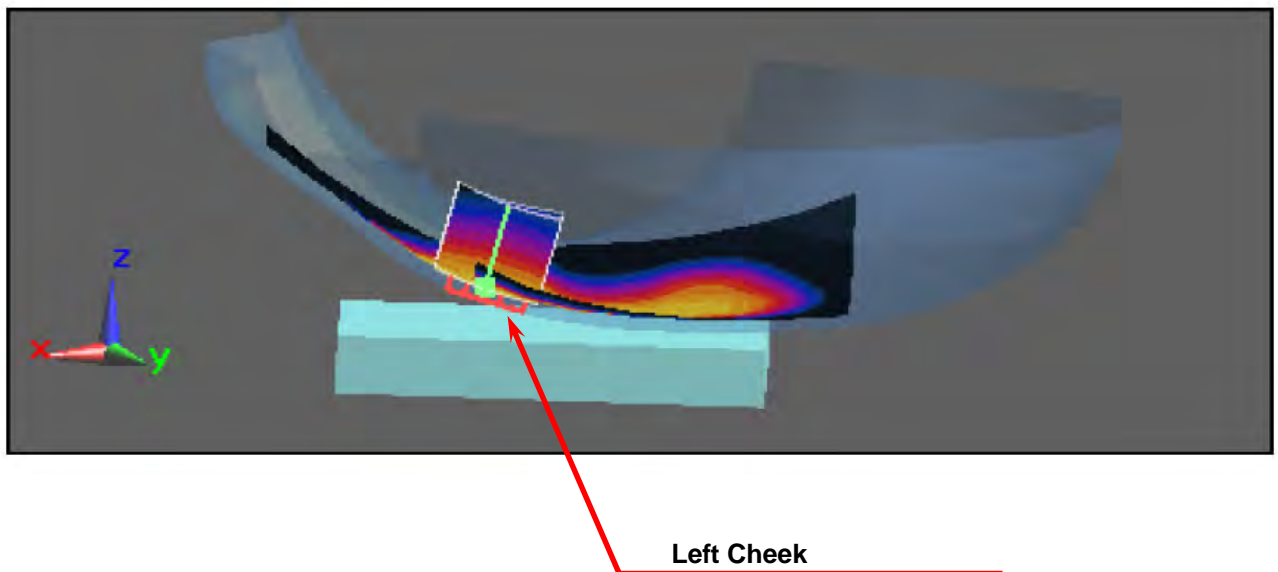


Figure 4. Left Head SAR Test Setup (Tilted)



Body Setup (Back facing to phantom 15mm)

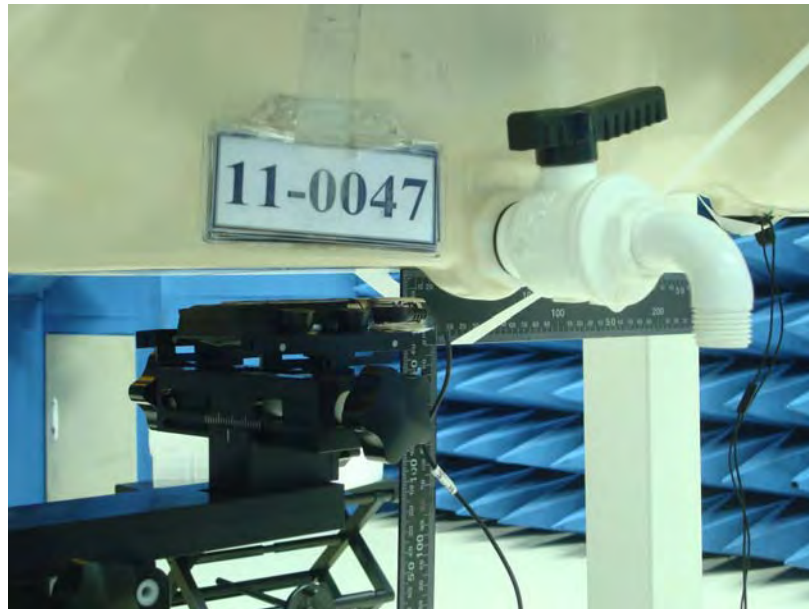
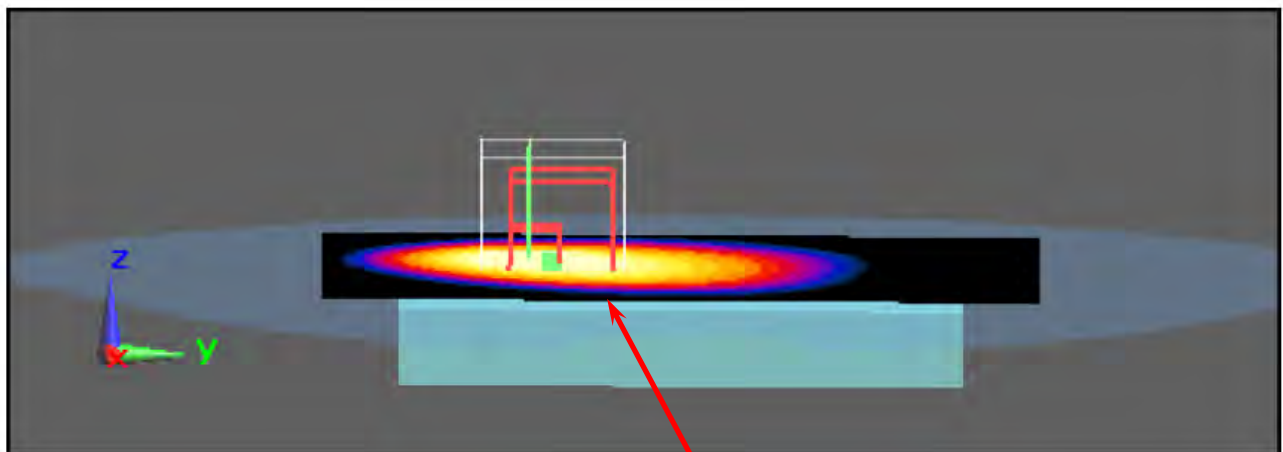


Figure 5. Body SAR Test Setup (Flat Section)



EUT Back side

Body Setup (Display facing to phantom 15mm)

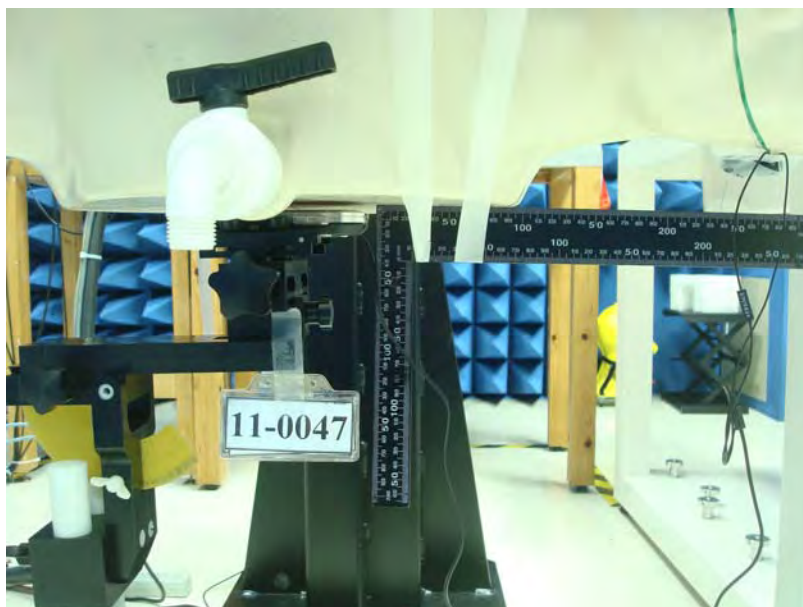
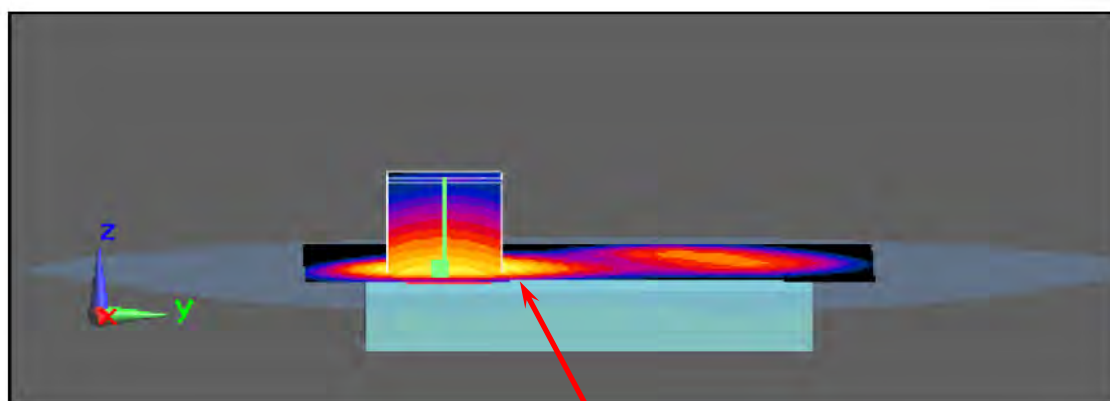


Figure 6. Body SAR Test Setup (Flat Section)



EUT Front side