

Thank you for purchasing INK helmet Bluetooth headset.

INK-01The product will offer you maximum safety and convenience when you're driving a motorcycle or conducting other activity requiring for wearing a helmet.

You can connect the Bluetooth headset with your mobile phone. When you are riding or engaged in other activity,. you don't need to bother manual operation at all. You can talk, answer calls and listen to MP3/4. Its marvelous function and sound quality brings you much extraordinary excitement like driving pleasure

## **Contents**

**Safety Introductions**

**Product Specification**

**Product Application**

**Packing List**

**Operation Interface**

**Operation Instruction**

Recharge

Turn on/off

Matching

Attaching and Detaching

Call Handling

**v**

**Voice Command Function**

**Feature Key-Press Introductions**

**Voice and Light Signal**

**FAQ**

## **Safety Instructions**

Read below information before using the product INK-01 earphone:

- Please read the instructions carefully.
- Please follow the listed warnings and instructions in the specifications.
- Please use clean cloth to clean the product. Don't use water or detergent.
- Please dry up the headset in case of being dropped into water.
- Please don't expose the headset to high temperature, wet and high pressure environment.
- Don't drop or crush.
- Never try to disassemble the product yourself because it will probably cause damage to internal circuit. Damage caused by manmade improper operation will not be covered in the warranty.

Please stop using the product in the event of the following cases:

- The headset is damaged because of being dropped down, wetted or other reasons.
- There is obvious abnormal indication during operation.
- The fault cannot be corrected through testing and cannot work normally.

Note: The product INK-01 belongs to has waterproof device and can be used in rain and snow. However, to guarantee the service life to the maximum extent, we suggest it not be used for long time during bad weather. At any time especially in the time of raining and snowing, please cover

the rechargeable plug hole to avoid being wetted.

Please disconnect the headset from charger under the following circumstances:

- Headset or charger has been wetted.
- The charger fails to work under normal operation. or has malfunctioning when it is in use.
- The charger has subjected to a severe fall.
- The charger has malfunctions.

#### Radio Frequency Interference with other devices

Most electronic devices are shielded against radio interference, but certain are subject to the radiation from the earphone, mainly including:

##### - Pacemaker:

Pacemaker industrial association suggests the minimum distance between mobile phone/headset device and pacemaker shall be 16cm to avoid radiation interference.

##### - Hearing Aid

Some headset may cause radiation interference with hearing aid. In this case, please consult hearing aid manufacturer for alternatives or remedies.

##### - Other Medical Device+

In case you are using other personal medical device, please consult the manufacturer or doctor on radio interference problems. Your doctor may help you in this regard.

### Product Specification

Product Model	INK - 01
Standard Protocol/ Signal Output	Bluetooth 1.2 Version Class II
Frequency Domain :	2.4GHz~2.4835GHz ISM Band
Talk Time	9 小时 Hours
Standby Time	One Week
Support Profile	Headset & Handsfree
Connection Mode	Point to Point
Safety Mechanism	Encryption
Energy Consumption	Low
Battery Capacity	200mAh
Charger	5V 300mA
Operating Temperature	-10-50 Fahrenheit Degree
Device Storage Temperature	-20-60 Fahrenheit Degree
weight of product	76g
Size	68mmX34mmX17mm
Safety Standard	The device is precision apparatus. Please do not drop or crush.

PS : In case of update version, the above information will be subject to the actual product.

### Product Application

Most operation is automatic, offering the most security during your drive

small in size, beautiful in appearance, easy in use, portable

large battery capacity rechargeable polymer lithium cell guarantee 9 hours of talk time and one week long standby time.

compatible with hands free and headset program  
stereo sound, outstanding sound quality

Compatible with travel charger 110/240V 50/60Hz  
answering calls/declining calls can be done through headset device or mobile phone (subject to the function of the mobile phone)

Can dial through mobile phone while answer via headset. \*With some mobile phone, people have to press CTRL button on headset to switch the incoming calls.  
one year quality guarantee

### Packing List

耳机	
带有麦克风和扬声器的夹子	
充电器	
魔术贴尼龙垫	
麦克风的海绵套	
增厚夹 Extra Thick Clip	
用户使用说明书（含质保书）	

--	--

多功能键 Multifunction Button

信号灯 Signal Light



挂断/重播键  
Hang up/Redial Button

声音升高键 Volume Up

耳机防水盖  
Earphone Waterproof

声音降低键  
Volume Dn

Headset

Clamp with microphone and loudspeaker

Charger

Magic Nylon Pad

Sponge for the Microphone

Extra Thick Pad

User Operation Instruction (incl. warranty card)

## Operating Interface

Left One CTRL ( Multifunctional Button )

Left Two Signal Light

Right One Hang up /Redial Button

Upper Right Sound Volume Up

Lower Right Sound Volume Down

Multifunctional Button : Press this button Answering or Dialing

Turn on or off

Match with Mobile Phone

Redial/ Decline Button - Ending/Declining Calls

- Redial

Volume Up - Press to turn up sound volume

Volume Down - Press to turn down sound volume

the functions of the product can be achieved through pressing the buttons.

Note: All the functions of the product can be achieved through pressing the buttons as per the following instruction.

1 Press the control button for over three seconds or for only around one second

2 Press the volume up or down button to adjust volume.



Microphone

Clamp

Patch Panel

Loudspeaker

Charger Waterproof Cover

( open the waterproof cover first, and then insert the charger into the plug and the recharging begins. )

## Operation Instruction

### Recharge

Make sure that the battery is fully charged at the first time. Initial recharging time shall at least five hours.

Afterwards, recharge needs 1-2 hours and can be done whenever the headset is on or off.

Recharge Instruction: connect charger with the recharge plug between the two volume control buttons and connect with power outlet. The red indicator light will be on during charging and off when the charge is completed.

### Turn On/Off

Press and hold the headset control button for at least six seconds until you see the blue LED flash three times and hear a high beep, and then release the button quickly.

Turn off the headset—Press and hold the headset control button for at least three seconds until you see the red LED flash three times and hear a low beep, and then release the button.

### Turn On the Headset for the First Time

To realize wireless communication, you must match your headset and mobile phone. The matching between the two devices requires only one time. 。 After successful matching, if the headset and mobile phone are both turned on, within operational distance, the two devices will be connected automatically unless your delete the headset from your mobile phone matching list

### Matching with Mobile Phone

Method:

1. Turn on your mobile phone and set the Bluetooth function on.
2. Turn the headset off, press and hold the control button until the quick alternating of red and blue signal and then release.
3. Search for the Bluetooth device on the mobile phone as per onscreen instruction on the mobile phone.

4. After a few seconds, INK01 will be displayed on the “found device list” on the mobile phone. Choose it and accept matching.
5. Input 0000 as your PIN code and then press to confirm.
6. Your mobile phone will be duly connected.

Note: if the matching operation fails to be completed within two minutes, the headset will return to the standby mode and you will have to repeat the above matching operation.

Your headset can be connected with 8 mobile phones, but it will normally consider the last connected one as the default connector.

Reconnect the headset with paired mobile phone.

Though the headset and mobile phone have been paired, they might disconnect when your turn off one of them. When you turn on the device again, some mobile phone will require for pairing again. Meanwhile, since the operational distance between the two is 10 meters, signal might be disrupted beyond this distance and reconnection may also be required. After you turn on mobile phone, you can reconnect by the following ways. (Note: Though the headset and mobile phone have been paired already, they might disconnect when your turn off one of them.)

The commonly used solution: Turn off headset. After a few seconds, restart and press CTRL button.

The headset is voice activation capable. Press the CTRL button to activate the voice dialing function. If the headset is voice activation capable, press the CTRL button to activate the voice dialing function. Do nothing. Wait for incoming call and simply press CTRL button to answer to reconnect.

Certain mobile phone pairs with headset through the setup menu of headset. If so, please refer to mobile phone manual and operation instructions.

## **Attaching and Detaching**

### **Initial Attaching**

Prior to attaching, please make sure that your headset is fully charged and has been paired with your mobile phone. In case of matching failure, the headset will not work. (Please refer to charging operation on Page X and matching instructions on Page X for solution.)

After successful matching, please fix the headset onto your helmet as per the following steps:

Attaching Method :

1. Loosen the two screws of the clamp with a screwdriver.

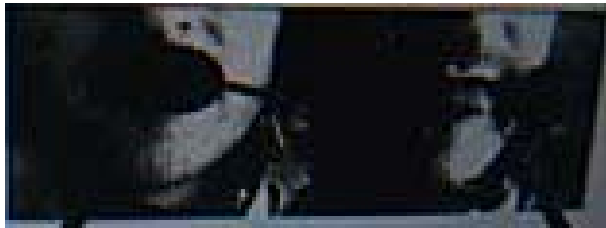


2. Slide the patch panel between the helmet hull and internal pad. (if the helmet hull is too thick, please use included extra thick clip. )



3.

Adjust the clamp to ideal position: make sure the loudspeaker is pointed towards either of your ears and the microphone to your mouth. And then tighten the screw



wrong

right

Use the magic sticker to point the loudspeaker towards either of your ear.

4. Sliding the headset downward along the clamp patch panel until you hear a voice and the headset is locked in relevant place.



Detach the Headset From the Helmet

Use one hand to press against clamp and the other hand to slide the headset upwards. In one second, the headset has been detached for storing or recharging.

按这里  
Press it.



## Call Handling

Note: Certain headset functions require that the mobile phone supports hand-free function.

### Dialing

Dial via the mobile phone

- dial the number on the mobile phone

- press the call/send button to make a call

### Voice Command Dialing

Make sure the mobile phone is on and not in course of communication. Press CTRL button and hear a sound. Speak up your name of the people you intent to call and wait for the response. The response will differ from mobile phones. Note: This operation requires you to record and save the name and corresponding number onto your mobile phone in advance. Meanwhile, your mobile phone shall support the function of voice dialing.

### Answering a Call

Incoming Call Alert Mode of Headset: alert ringing tone is gradually getting higher. When there is incoming calls, you have two alternatives to answer the call:

- press the CTRL button on your headset

If you utter no sound within 7 seconds since the first alert ringing, the incoming calls will be declined automatically and the headset alert ringing will stop.



按此键接听  
Press it to answer a call.

### Ending a Call

Press decline/redial button and hear a sound, the incoming call is ended. If the caller ends the call, there will be no operation needed. Press CTRL button and wait at least three seconds to do voice dial again.



按此键结束通话  
Press it to end a call.



Note: If your mobile phone does not support hand-free function, you cannot end a call by pressing decline/redial button. Correspondingly, you will need to press CTRL button to end the call.

#### Volume Control

The headset device includes AGC technology which can automatically adjust the volume of loudspeaker according to the level of ambient noise and riding speed. Its volume regulating range is  $\pm 30\%$  of original volume

You may also manually regulate voice by pressing the volume up/down button.



In the meanwhile, you will hear a short sound to inform you of successful operation.

#### Declining A Call

When you hear alert ringing of incoming calls, you have two alternatives to decline the call :

- press the redial/decline button on the headset

- If the VR feature is workable, please keep silent for 7 seconds to decline the incoming call.

#### Redial

If your mobile phone is not in the course of conservation, you can simply press the redial/decline button on your headset to dial the last talk number.

### Voice Command feature

This feature allows you to answer or decline a call via voice command without any manual operation.

The default status of the feature is **on**.

If you need to turn off this feature, please refer to the following text.

Note: Normally, VC feature can work well when rider wearing 3/4 helmets and riding at 70km/h or wearing a full helmet and riding at 120km/h. High quality helmet can better represent VC feature and guarantee fluent and clear conversation.

#### Cancel VC Feature

Press and hold the volume up and down buttons at the same time for three seconds. Whenever you went to turn on or turn off this function, you will hear a raising or lowering signal to inform you of successful operation.

#### **Use VC Feature to Answer Calls**

We suggest you set your mobile phone automatic answering default mode. In this way, your mobile phone can answer incoming calls automatically without your extra operation.

Besides, you can use headset device to answer incoming calls. Within 7 seconds after you hear alert ringing, saying out any word will help you to receive the call. If you keep silent during these 7 seconds, the coming call will declined automatically through the headset device.

#### **Use VC Feature to Decline Calls**

If you need to decline incoming calls and reminding voice, please keep silent for consecutive 7 seconds after the bell rings.

### **Key-press Instruction**

Purpose	Operation Instruction
Turn on headset	Press and hold the control button for at least 6 seconds.
Turn off headset	Press and hold the control button for at least three seconds.
Answer incoming calls	Press the CTRL button on your headset quickly/speak out any word
Decline incoming calls	Quickly press the redial/decline/end button on your headset/
Ending calls	Quickly press decline/redial/end button
Turn up sound volume	Quickly press volume up button
Turn down sound volume	Quickly press volume up button
Voice dialing	On standby status, press the control button for a short time and speak out the name. Note: the name and telephone number of the people you are calling should be recorded and saved in your mobile phone beforehand.
Redial	On standby status, press the decline/redial button quickly.

### **Light and Voice Signal Discription**

#### **LED Indication**

Blue Light Flashes Three Time  
 Red Light Flashes Three Time  
 Blue light flashes every three seconds  
 Blue and red light flash alternating  
 Red light flashes every three seconds

#### **Status**

Headset On  
 Headset Off  
 Standby Status; not in the course of conversation  
 Matching Status  
 Low battery charge under standby status

Continuous red light  
Red light goes out

Recharging  
Recharging is finished

### **Voice Alerting**

Gradually raising voice  
Gradually lowering voice  
Low and rhythmic beep  
Low and rhythmic beep  
Gradually raising voice  
Gradually lowering voice

### **Status**

headset is on  
headset is off  
low battery charge under standby status  
low battery charge under conversation status  
voice recognition feature is on  
voice recognition feature is off

## **FAQ**

### **1. If my mobile phone has Bluetooth feature, do I still need a Bluetooth adapter?**

No. This model of headset can be connected with any Bluetooth enabled mobile phone and other Bluetooth devices.

### **2. If my mobile phone does not have Bluetooth feature, how can I use the headset?**

If you use matching adapter (buy separately), plug it into the headset plug hole can realize wireless communication.

### **3. How does the headset work?**

After the headset being paired with Bluetooth enabled mobile phone, the two devices can realize wireless communication by means of Bluetooth technology.

### **4. Can my headset be paired with devices such as MP3/4, CD player and GPS?**

Yes As long as these devices are Bluetooth enabled, the headset can be connected with them. The headset can be connected with various Bluetooth enabled device

### **5. Will other Bluetooth enabled mobile phone interference with my headset? Will other people be able to eavesdrop my conversation?**

No. Once your mobile phone is paired with your headset, your mobile phone only recognizes your headset ID and other Bluetooth enabled mobile phone has no access to your voice signal.

### **6. Will nearby wireless LAN or other 2.4MHz transmission interfere with my headset device?**

We do not have such experience so far. However, generally speaking, all Bluetooth headsets may cause interference including our product.

## **7. Solutions**

### **Problem**

### **Solution**

Bluetooth Problem

Pairing Failure : 1. Delete the headset from your mobile phone blue tooth device list.

. 2. Turn off your mobile phone and headset.

3. Take out the mobile phone battery and then reload it.

4. Refer to the pairing instructions on Page X to repeat operation.

Cannot answer or use voice dial via control button : 1. Make sure the headset is on and in standby mode and blue signal light is flashing slowly.

2. Set the Bluetooth feature of your mobile phone on.
3. Pair the headset with your mobile phone correctly.
4. Reconnect your mobile phone and headset.
5. Check the definition and setup of your mobile phone.
6. Repeat the pairing operation. as is elaborated

in the matching instructions.

Cannot answer calls via VC feature : 1. Make sure the VC feature is on.

2. Make sure you speak loudly enough.

Cannot end calls via decline/redial/ending button : Your mobile phone supports only Bluetooth program but not hands-free profile. Therefore, you will have to use control button to answer or end calls.

Cannot Redial : 1. Make sure your call record is not empty.

2. Make sure your mobile phone supports portable Profile.

Battery fails to support at least 4 hours of talk time: make sure your headset is fully charged.  
Recharging time of fully used up battery is 1-2 hours.  
When recharge is finished, the red indicator light will go out.

Red indicator light flashes unsteadily when connected with charger : 1. Make sure the DC plug of charger is correctly connected.

2. Disconnect the DC plug of charger and reconnect in several seconds.
3. When the recharging for headset is finished, the red light will go out.

Fail to reject a call by keeping silent : 1. Make sure VC feature is workable (see above)

2. Rejection feature can only used on mobile phone that supports hands-free program. Make sure your mobile phone has this feature.

The sound gets lower when the mobile phone is put in the anterior pocket : The Bluetooth signal of certain mobile phone is weak, so, the voice volume is lower, especially when the mobile phone is close to one's body.

Suggestion: Move the mobile phone to pocket that is at the same side of the headset.

Other complains that my voice is too low : 1. Perhaps you are riding too fast.

2. Try some larger microphone sponge pad.

3. Make sure the microphone is positioned towards the corners of your mouth.

Hear tiny noises : That might be caused by nearby interference. If you are using GSM mobile phone, and the mobile phone and headset is quite near each other, this will possible generate noise.

The distance between headset and mobile phone exceeds 10 meters or there is obvious obstacle between them. (Like cement wall etc.).

### **\*\*\* Caution \*\*\***

This device complies with part 15 of the FCC Rules. Operation is subject to the following two conditions: (1) This device may not cause harmful interference, and (2) this device must accept any interference received, including interference that may cause undesired operation.

Changes of modifications not expressly approved by the party responsible for compliance could void the user's authority to operate the equipment.

### **FCC statement**

Note: This equipment has been tested and found to comply with the limits for a Class B digital device, pursuant to part 15 of the FCC Rules. These limits are designed to provide reasonable protection against harmful interference in a residential installation. This equipment generates, uses and can radiate radio frequency energy and, if not installed and used in accordance with the instructions, may cause harmful interference to radio communications. However, there is no guarantee that interference will not occur in a particular installation.

If this equipment does cause harmful interference to radio or television reception, which can be determined by turning the equipment off and on, the user is encouraged to try to correct the interference by one or more of the following measures:

- Reorient or relocate the receiving antenna.
- Increase the separation between the equipment and receiver.
- Connect the equipment into an outlet on a circuit different from that to which the receiver is connected.
- Consult the dealer or an experienced radio/TV technician for help.