

## **Certification Exhibit**

**FCC ID: WC6-ETRX  
IC: 7749A-ETRX**

**FCC Rule Part: 15.247  
IC Radio Standards Specification: RSS-210**

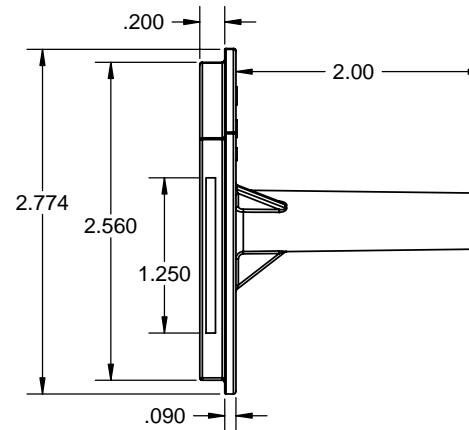
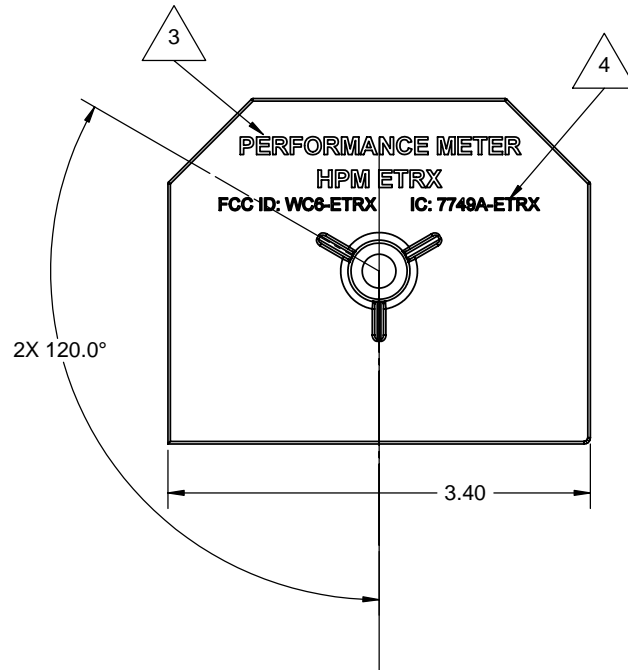
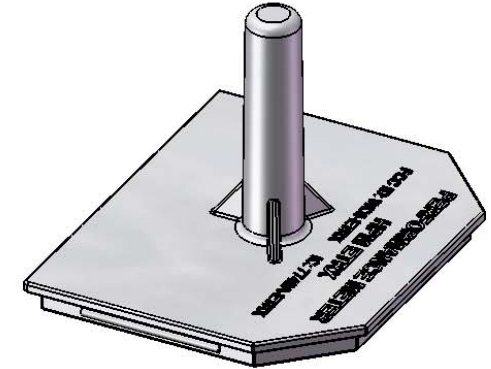
**ACS Report Number: 08-0221 - 15C**

**Manufacturer: Performance Meter, Inc.  
Model: ETRX**

## **Labeling Information**

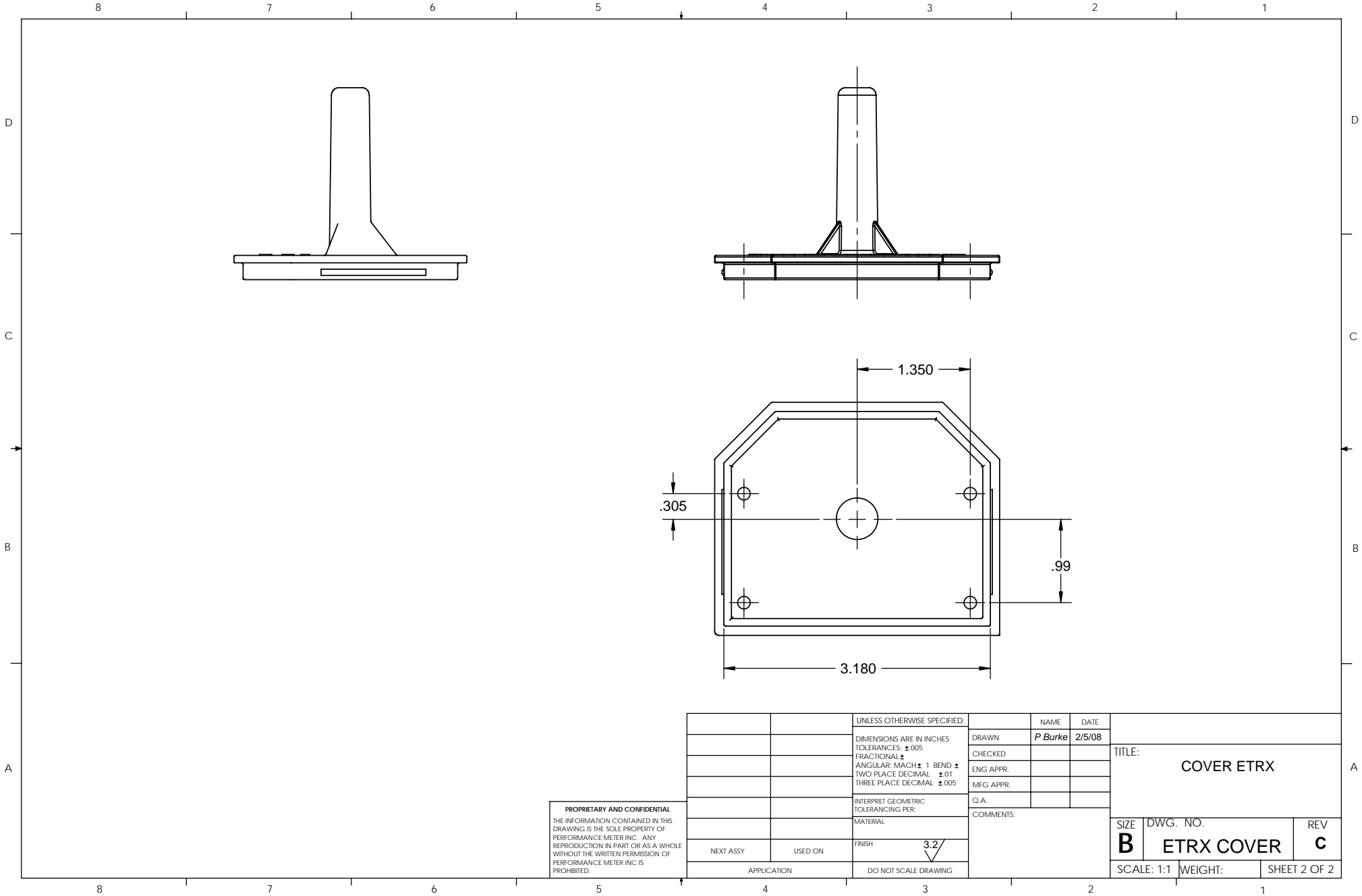
NOTES:

1. APPLICABLE STANDARDS / SPECIFICATIONS  
ASME Y14.5M - 1994 DIMENSIONS AND TOLERANCES.
2. REMOVE ALL BURRS AND SHARP EDGES EQUIVALENT  
TO R .010 MAX. UNLESS OTHERWISE NOTED.
3. RAISED TEXT 14 POINTS AND .010 HIGH, LOCATION APPROXIMATELY AS  
SHOWN. TEXT TO READ: PERFORMANCE METER  
HPM ETRX
4. RAISED TEXT 10 POINTS AND .010 HIGH, LOCATION APPROXIMATELY AS  
SHOWN. TEXT TO READ: FCC ID: WC6-ETRX IC: 7749A-ETRX
5. MATERIAL TO BE BLACK POLYPROPYLENE AND NOT INTERFERE WITH  
RADIO FREQUENCY SIGNALS.
6. MATERIAL TO HAVE ULTRAVIOLET PROTECTION.



PROPRIETARY AND CONFIDENTIAL  
THE INFORMATION CONTAINED IN THIS  
DRAWING IS THE SOLE PROPERTY OF  
PERFORMANCE METER, INC. ANY  
REPRODUCTION IN PART OR AS A WHOLE  
WITHOUT THE WRITTEN PERMISSION OF  
PERFORMANCE METER, INC. IS  
PROHIBITED.

		UNLESS OTHERWISE SPECIFIED:		NAME	DATE			
		DIMENSIONS ARE IN INCHES TOLERANCES: ±.005 FRACTIONAL ± ANGULAR: MACH ±1 BEND ± TWO PLACE DECIMAL ±.01 THREE PLACE DECIMAL ±.005	DRAWN	P Burke	2/5/08	TITLE:  COVER ETRX		
			CHECKED					
			ENG APPR.					
			MFG APPR.					
		INTERPRET GEOMETRIC TOLERANCING PER:	Q.A.			SIZE DWG. NO. REV  B ETRX COVER c  SCALE: 1:1 WEIGHT: SHEET 1 OF 2		
		MATERIAL	COMMENTS:					
NEXT ASSY	USED ON	FINISH 3.2						
APPLICATION		DO NOT SCALE DRAWING						



PROPRIETARY AND CONFIDENTIAL  
THE INFORMATION CONTAINED IN THIS  
DRAWING IS THE SOLE PROPERTY OF  
PERFORMANCE METER INC. ANY  
REPRODUCTION IN PART OR AS A WHOLE  
WITHOUT THE WRITTEN PERMISSION OF  
PERFORMANCE METER INC IS  
PROHIBITED.

		UNLESS OTHERWISE SPECIFIED:		NAME	DATE	TITLE:  COVER ETRX		
		DIMENSIONS ARE IN INCHES TOLERANCES: ±.005	DRAWN	P Burke	2/5/08			
		FRACTIONAL ±	CHECKED					
		ANGULAR: MACH ± 1 BEND ±	ENG APPR.					
		TWO PLACE DECIMAL ±.01	MFG APPR.					
		THREE PLACE DECIMAL ±.005				SIZE DWG. NO. REV <b>B</b> ETRX COVER <b>C</b>		
		INTERPRET GEOMETRIC TOLERANCING PER:	Q.A.					
		MATERIAL	COMMENTS:					
		FINISH 3.2/√						
NEXT ASSY	USED ON	DO NOT SCALE DRAWING				SCALE: 1:1	WEIGHT:	SHEET 2 OF 2
APPLICATION								

- NOTES:
1.

STICK ON LABEL TO COMPLY WITH THE FOLLOWING:

MUST NOT BE METALLIC.

MUST BE WATERPROOF.

PRINTED CHARACTERS MUST NOT FADE OR RUN WHEN SUBMERGED UNDER WATER.

SIZE APPROXIMATELY .750 X 2.5
2.

LABEL TO CONTAIN FCC PART 15 VERBIAGE.
3.

LABEL LOCATION.

2

This device complies with part 15 of the FCC Rules and Industry Canada requirements. Operation is subject to the following two conditions: (1) This device may not cause harmful interference, and (2) this device must accept any interference received, including interference that may cause undesired operation.



PROPRIETARY AND CONFIDENTIAL

THE INFORMATION CONTAINED IN THIS DRAWING IS THE SOLE PROPERTY OF <INSERT COMPANY NAME HERE>. ANY REPRODUCTION IN PART OR AS A WHOLE WITHOUT THE WRITTEN PERMISSION OF <INSERT COMPANY NAME HERE> IS PROHIBITED.

		UNLESS OTHERWISE SPECIFIED:		NAME	DATE	TITLE: FCC PART 15 LABEL		
		DIMENSIONS ARE IN INCHES	DRAWN	P. BURKE	6/30/08			
		TOLERANCES:	CHECKED					
		FRACTIONAL ±	ENG APPR.					
		ANGULAR: MACH ± BEND ±	MFG APPR.					
		TWO PLACE DECIMAL ±	Q.A.			SIZE	DWG. NO.	REV
		THREE PLACE DECIMAL ±	PROPERTY OF PERFORMANCE METER, INC.			B	FCC_PART_15	NR
		INTERPRET GEOMETRIC TOLERANCING PER:				SCALE: 1:2	WEIGHT:	SHEET 1 OF 1
		MATERIAL						
NEXT ASSY	USED ON	FINISH						
WEIGHT: APPLICATION		DO NOT SCALE DRAWING						