



## COMPUTER SPEAKERS

Secret Codes  
Inside Unlock  
Bonus Fun!

See Page 1

OWNER'S MANUAL

FK610

RADICA: and associated trademarks and trade dress are owned by, and used under license from, Mattel, Inc. ©2008 Mattel, Inc. All Rights Reserved.

Are you ready to unlock the FUN?  
Here's how.

**rocketwithSprocket6588**  
Code

Redeem the above Code in the  
Options menu inside U.B. Funkeys™.

For more information visit  
[www.ubfunkeys.com](http://www.ubfunkeys.com)

**PRODUCT FEATURES:**

- Fully compatible with USB.
- USB Powered - no separate power supply or battery required.
- Audio input through 3.5mm stereo jack.

**FCC INFORMATION:**

This equipment has been tested and found to comply with the limits for a Class B digital device, pursuant to Part 15 of the FCC Rules. These limits are designed to provide reasonable protection against harmful interference in a residential installation. This equipment generates, uses and can radiate radio frequency energy and, if not installed and used in accordance with the instructions, may cause harmful interference to radio communications. However, there is no guarantee that interference will not occur in a particular installation. If this equipment does cause harmful interference to radio or television reception, which can be determined by turning the equipment off and on, the user is encouraged to try to correct the interference by one or more of the following measures:

- Reorient or relocate the receiving antenna.
- Increase the separation between the equipment and receiver.
- Connect the equipment into an outlet on a circuit different from that to which the receiver is connected.
- Consult the dealer or an experienced radio/TV technician for help.

This device complies with Part 15 of the FCC Rules. Operation is subject to the following two conditions:

- (1) This device may not cause harmful interference, and
- (2) This device must accept any interference received, including interference that may cause undesired operation.

**PRECAUTIONS:**

- Avoid direct touching or placing any objects in the USB connector, as static electricity may damage the internal components.
- Avoid direct exposure to heat and humidity, as the functionality of this product will be adversely affected by these extreme conditions.
- Avoid dropping the product to prevent accidental damage to the unit.
- Do not disassemble the product, which will void the warranty.
- Do not force the drive into the USB jack if you experience any resistance. This will cause severe damage to the product.
- Do not use or leave it in the following locations: direct sunlight, car under the scorching sun, high humidity area, and erosive gas/liquid area.

Emerson Radio Corp. has produced this audio product under license from Mattel. We have taken great care to make sure your unit was in perfect working order when it left our factory.

It has been designed to give you many years of enjoyment and trouble-free operation. Read this manual before operating this unit to become familiar with its features. In the event you require technical assistance, please contact the Emerson Radio Customer Service hotline at 1-800-898-9020. Retain this manual for future reference.



## **WARNING**

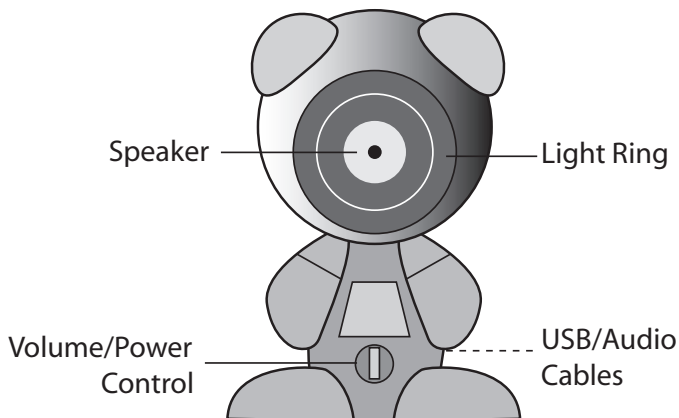
**Choking Hazard—Small Parts and Packaging Materials. Not for children under 8 years.**

- All materials for fastening or packing purposes are not part of the unit and should be discarded for children's safety.
- Please keep all information for future reference.
- This is not a toy.

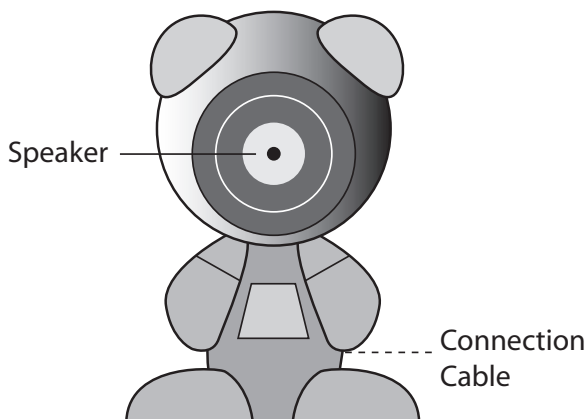
### **NOTE:**

The manufacturer is not responsible for any radio or TV interference caused by unauthorized modifications to this equipment. Such modifications to could void the User's authority to operate the equipment.

## LOCATION OF CONTROLS



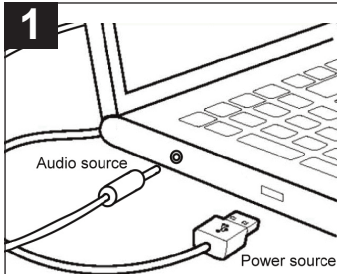
Left Speaker



Right Speaker

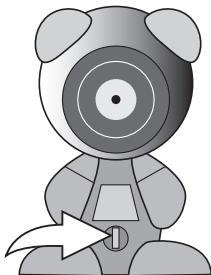
# OPERATION

1



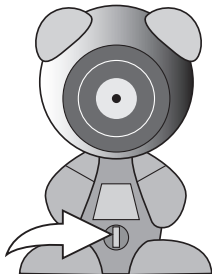
Connect the audio cable (3.5mm) to your computer's Headphone output jack. Connect the USB Cable to your computer's USB jack.

2



Place the speakers at the left and right side of your monitor. Rotate the Volume/Power control clockwise until a click is heard to turn the speakers on; the LED will light.

3



Rotate the Volume/Power control to adjust the volume as desired. To turn the speakers off, rotate the control counter-clockwise until a click is heard, the LED will turn off.

## IMPORTANT:

- Before attempting to install the USB powered Computer Speakers, your computer must have working USB controller listed in the Windows Device Manager.
- Please ensure your speaker has been properly installed before playing music.

# **EMERSON RADIO CORP.**

## **LIMITED WARRANTY (Valid in the United States)**

Emerson Radio Corp. warrants manufacturing defects in original material, including original parts and workmanship, under normal use and conditions, for a period of ninety (90) days from the date of original purchase in the U.S. With your dated proof of purchase, we will provide repair service at no charge for labor and parts at an authorized Depot Repair Facility, or replace the product in our discretion. For repair or replacement, pack your unit in a padded box, enclose your check or money order payable to Emerson Radio

Corp. in the amount of \$9.00 (not required by California residents) to cover shipping and handling costs, and enclose a copy of your proof of purchase. Send your unit to:

Emerson Radio Corp.  
5101 Statesman Drive  
Irving, TX 75063

This warranty does not cover damage from negligence, misuse, abuse, accident, failure to follow operating instructions, commercial use, rental, repairs by an unauthorized facility, or products purchased, used, serviced or damaged outside of the United States.

**THIS WARRANTY GIVES YOU SPECIFIC LEGAL RIGHTS, AND YOU MAY ALSO HAVE OTHER RIGHTS WHICH VARY FROM STATE TO STATE.**

**AU898M**

The serial number of your system is located on a label on the bottom cabinet. Please take a moment now to locate the serial number and write the number in the space provided below. You may be asked to provide this number when calling for product service.

**Model Number:** **FK610**

**Serial Number:** \_\_\_\_\_

