

# RF TEST REPORT



Report No.: 16070254-FCC-R4

Supersede Report No.: N/A

Applicant	Verykool USA Inc	
Product Name	Mobile phone	
Model No.	s5530	
Serial No.	N/A	
Test Standard	FCC Part 15.247: 2015, ANSI C63.10: 2013	
Test Date	January 28 to March 02&April 06, 2016&April 26, 2016	
Issue Date	April 26, 2016	
Test Result	<input checked="" type="checkbox"/> Pass <input type="checkbox"/> Fail	
Equipment complied with the specification <input checked="" type="checkbox"/>		
Equipment did not comply with the specification <input type="checkbox"/>		
<i>Winnie Zhang</i>	<i>David Huang</i>	
Winnie Zhang Test Engineer	David Huang Checked By	
This test report may be reproduced in full only Test result presented in this test report is applicable to the tested sample only		

Issued by:

**SIEMIC (SHENZHEN-CHINA) LABORATORIES**

Zone A, Floor 1, Building 2 Wan Ye Long Technology Park

South Side of Zhoushi Road, Bao' an District, Shenzhen, Guangdong China 518108

Phone: +86 0755 2601 4629801 Email: [China@siemic.com.cn](mailto:China@siemic.com.cn)

## Laboratories Introduction

SIEMIC, headquartered in the heart of Silicon Valley, with superior facilities in US and Asia, is one of the leading independent testing and certification facilities providing customers with one-stop shop services for Compliance Testing and Global Certifications.



In addition to testing and certification, SIEMIC provides initial design reviews and compliance management throughout a project. Our extensive experience with China, Asia Pacific, North America, European, and International compliance requirements, assures the fastest, most cost effective way to attain regulatory compliance for the global markets.

### Accreditations for Conformity Assessment

Country/Region	Scope
USA	EMC, RF/Wireless, SAR, Telecom
Canada	EMC, RF/Wireless, SAR, Telecom
Taiwan	EMC, RF, Telecom, SAR, Safety
Hong Kong	RF/Wireless, SAR, Telecom
Australia	EMC, RF, Telecom, SAR, Safety
Korea	EMI, EMS, RF, SAR, Telecom, Safety
Japan	EMI, RF/Wireless, SAR, Telecom
Singapore	EMC, RF, SAR, Telecom
Europe	EMC, RF, SAR, Telecom, Safety

Test Report No.	16070254-FCC-R4
Page	3 of 44

This page has been left blank intentionally.

## CONTENTS

1. REPORT REVISION HISTORY .....	5
2. CUSTOMER INFORMATION .....	5
3. TEST SITE INFORMATION .....	5
4. EQUIPMENT UNDER TEST (EUT) INFORMATION .....	6
5. TEST SUMMARY .....	8
6. MEASUREMENTS, EXAMINATION AND DERIVED RESULTS .....	9
6.1 ANTENNA REQUIREMENT .....	9
6.2 DTS (6 DB) CHANNEL BANDWIDTH .....	10
6.3 MAXIMUM OUTPUT POWER .....	12
6.4 POWER SPECTRAL DENSITY .....	14
6.5 BAND-EDGE & UNWANTED EMISSIONS INTO NON-RESTRICTED FREQUENCY BANDS .....	16
6.6 AC POWER LINE CONDUCTED EMISSIONS .....	19
6.7 RADIATED SPURIOUS EMISSIONS .....	25
ANNEX A. TEST INSTRUMENT .....	31
ANNEX B. EUT AND TEST SETUP PHOTOGRAPHS .....	33
ANNEX C. TEST SETUP AND SUPPORTING EQUIPMENT .....	39
ANNEX D. USER MANUAL / BLOCK DIAGRAM / SCHEMATICS / PARTLIST .....	43
ANNEX E. DECLARATION OF SIMILARITY .....	44

## 1. Report Revision History

Report No.	Report Version	Description	Issue Date
16070254-FCC-R4	NONE	Original	April 15, 2016
16070254-FCC-R4	V1	Adding data	April 26, 2016

## 2. Customer information

Applicant Name	Verykool USA Inc
Applicant Add	3636 Nobel Drive, Suite 325, San Diego, California 92122 United States
Manufacturer	Zechin Communications Co.,Ltd.
Manufacturer Add	Unit804,8th Floor Desay Tech Building Gaoxin, Road South, Nanshan District Shenzhen,China

## 3. Test site information

Lab performing tests	SIEMIC (Shenzhen-China) LABORATORIES
Lab Address	Zone A, Floor 1, Building 2 Wan Ye Long Technology Park South Side of Zhoushi Road, Bao' an District, Shenzhen, Guangdong China 518108
FCC Test Site No.	718246
IC Test Site No.	4842E-1
Test Software	Radiated Emission Program-To Shenzhen v2.0

## 4. Equipment under Test (EUT) Information

Description of EUT: Mobile phone

Main Model: s5530

Serial Model: N/A

Date EUT received: January 27, 2016

Test Date(s): January 28 to March 02&April 06, 2016&April 26, 2016

Equipment Category : DTS

Antenna Gain:

- GSM850: 1.6dBi
- PCS1900: 3.8 dBi
- UMTS-FDD Band V: 1.7 dBi
- UMTS-FDD Band IV: 3.7 dBi
- UMTS-FDD Band II: 3.8 dBi
- Bluetooth/BLE: 3 dBi
- WIFI: 2.9 dBi
- GPS:1.6 dBi

Type of Modulation:

- GSM / GPRS: GMSK
- EGPRS: GMSK
- UMTS-FDD: QPSK, 16QAM
- 802.11b/g/n: DSSS, OFDM
- Bluetooth: GFSK,  $\pi$  /4DQPSK, 8DPSK
- BLE: GFSK
- GPS:BPSK

RF Operating Frequency (ies):

- GSM850 TX: 824.2 ~ 848.8 MHz; RX: 869.2 ~ 893.8 MHz
- PCS1900 TX: 1850.2 ~ 1909.8 MHz; RX: 1930.2 ~ 1989.8 MHz
- UMTS-FDD Band V TX: 826.4 ~ 846.6 MHz; RX: 871.4 ~ 891.6 MHz
- UMTS-FDD Band IV TX:1712.4 ~ 1752.6 MHz;  
RX : 2112.4 ~ 2152.6 MHz
- UMTS-FDD Band II TX:1852.4 ~ 1907.6 MHz;  
RX: 1932.4 ~ 1987.6 MHz
- WIFI:802.11b/g/n(20M): 2412-2462 MHz

Test Report No.	16070254-FCC-R4
Page	7 of 44

WIFI:802.11n(40M): 2422-2452 MHz

Bluetooth& BLE: 2402-2480 MHz

GPS RX:1575.42 MHz

Max. Output Power: -0.946dBm

Number of Channels: GSM 850: 124CH  
PCS1900: 299CH  
UMTS-FDD Band V : 102CH  
UMTS-FDD Band IV: 202CH  
UMTS-FDD Band II : 277CH  
WIFI :802.11b/g/n(20M): 11CH  
WIFI :802.11n(40M): 7CH  
Bluetooth: 79CH  
BLE: 40CH  
GPS:1CH

Port: Power Port, Earphone Port, USB Port

Trade Name : verykool

Input Power: Adapter:  
Model: SC050100-US  
Input: AC 100-240V; 50/60Hz;0.4A  
Output: DC 5.0V,1A  
Battery:  
Model: 336190PV  
Spec:3.8V,2800mAh,10.64Wh  
Limited charger voltage :4.35V

GPRS/EGPRS Multi-slot class: 8/10/12

FCC ID: WA6S5530

## 5. Test Summary

The product was tested in accordance with the following specifications.

All testing has been performed according to below product classification:

FCC Rules	Description of Test	Result
§15.203	Antenna Requirement	Compliance
§15.247 (a)(2)	DTS (6 dB) CHANNEL BANDWIDTH	Compliance
§15.247(b)(3)	Conducted Maximum Output Power	Compliance
§15.247(e)	Power Spectral Density	Compliance
§15.247(d)	Band-Edge & Unwanted Emissions into Non-Restricted Frequency Bands	Compliance
§15.207 (a),	AC Power Line Conducted Emissions	Compliance
§15.205, §15.209, §15.247(d)	Radiated Spurious Emissions & Unwanted Emissions into Restricted Frequency Bands	Compliance

### Measurement Uncertainty

Emissions		
Test Item	Description	Uncertainty
Band Edge and Radiated Spurious Emissions	Confidence level of approximately 95% (in the case where distributions are normal), with a coverage factor of 2 (for EUTs < 0.5m X 0.5m X 0.5m)	+5.6dB/-4.5dB
-	-	-



## 6. Measurements, Examination And Derived Results

### 6.1 Antenna Requirement

#### **Applicable Standard**

According to § 15.203, an intentional radiator shall be designed to ensure that no antenna other than that furnished by the responsible party shall be used with the device. The use of a permanently attached antenna or of an antenna that uses a unique coupling to the intentional radiator shall be considered sufficient to comply with the provisions of this section. The manufacturer may design the unit so that a broken antenna can be replaced by the user, but the user of a standard antenna jack or electrical connector is prohibited. The structure and application of the EUT were analyzed to determine compliance with section §15.203 of the rules. §15.203 state that the subject device must meet the following criteria:

- a. Antenna must be permanently attached to the unit.
- b. Antenna must use a unique type of connector to attach to the EUT.

Unit must be professionally installed, and installer shall be responsible for verifying that the correct antenna is employed with the unit.

And according to FCC 47 CFR section 15.247 (b), if the transmitting antennas of directional gain greater than 6dBi are used, the power shall be reduced by the amount in dB that the directional gain of the antenna exceeds 6 dBi.

#### **Antenna Connector Construction**

The EUT has 3 antennas:

A permanently attached PIFA antenna for Bluetooth/BLE/WIFI, the gain is 3dBi for Bluetooth/BLE, the gain is 2.9dBi for WIFI.

A permanently attached PIFA antenna for GSM/PCS and UMTS, the gain is 1.6dBi for GSM850, 3.8dBi for PCS1900, 1.7dBi for UMTS-FDD Band V, 3.7dBi for UMTS-FDD Band IV, 3.8dBi for UMTS-FDD Band II.

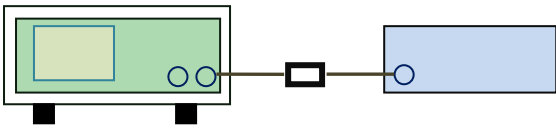
A permanently attached PIFA antenna for GPS, the gain is 1.6dBi for GPS.

**The antenna meets up with the ANTENNA REQUIREMENT.**

**Result:** Compliance.

## 6.2 DTS (6 dB) Channel Bandwidth

Temperature	24°C
Relative Humidity	51%
Atmospheric Pressure	1027mbar
Test date :	February 27, 2016
Tested By :	Winnie Zhang

Spec	Item	Requirement	Applicable
§ 15.247(a)(2)	a)	6dB BW≥ 500kHz;	<input checked="" type="checkbox"/>
RSS Gen(4.6.1)	b)	99% BW: For FCC reference only; required by IC.	<input checked="" type="checkbox"/>
Test Setup	 <p style="text-align: center;">Spectrum Analyzer                      EUT</p>		
Test Procedure	<p>558074 D01 DTS MEAS Guidance v03r03, 8.1 DTS bandwidth 6dB Emission bandwidth measurement procedure</p> <ul style="list-style-type: none"> <li>- Set RBW = 100 kHz.</li> <li>- Set the video bandwidth (VBW) ≥ 3 RBW.</li> <li>- Detector = Peak.</li> <li>- Trace mode = max hold.</li> <li>- Sweep = auto couple.</li> <li>- Allow the trace to stabilize.</li> </ul> <p>Measure the maximum width of the emission that is constrained by the frequencies associated with the two outermost amplitude points (upper and lower frequencies) that are attenuated by 6 dB relative to the maximum level measured in the fundamental emission.</p>		
Remark			
Result	<input checked="" type="checkbox"/> Pass <input type="checkbox"/> Fail		

Test Data    ☒ Yes                      ☐ N/A

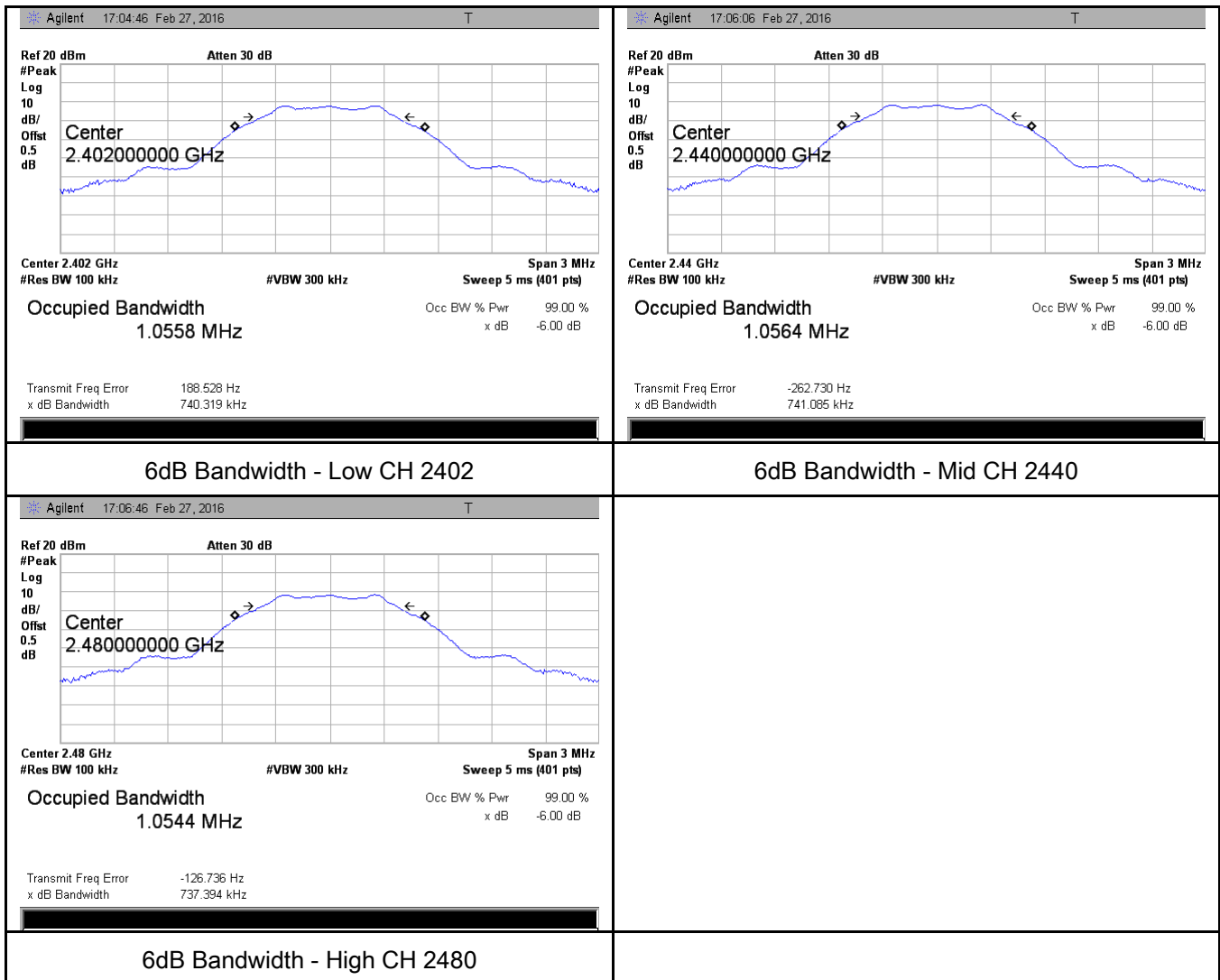
Test Plot    ☒ Yes (See below)                      ☐ N/A

## 6dB Bandwidth measurement result

### Test Data

CH	Freq (MHz)	6dB Bandwidth (kHz)	99% Occupied Bandwidth (MHz)
Low	2402	740.319	1.0558
Mid	2440	741.085	1.0564
High	2480	737.394	1.0544

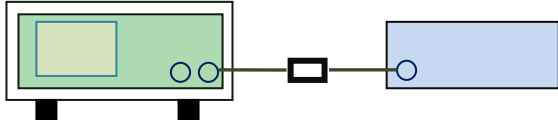
### Test Plots



### 6.3 Maximum Output Power

Temperature	24°C
Relative Humidity	51%
Atmospheric Pressure	1027mbar
Test date :	February 27, 2016
Tested By :	Winnie Zhang

#### Requirement(s):

Spec	Item	Requirement	Applicable
§15.247(b) (3),RSS210 (A8.4)	a)	FHSS in 2400-2483.5MHz with $\geq 75$ channels: $\leq 1$ Watt	<input type="checkbox"/>
	b)	FHSS in 5725-5850MHz: $\leq 1$ Watt	<input type="checkbox"/>
	c)	For all other FHSS in the 2400-2483.5MHz band: $\leq 0.125$ Watt.	<input type="checkbox"/>
	d)	FHSS in 902-928MHz with $\geq 50$ channels: $\leq 1$ Watt	<input type="checkbox"/>
	e)	FHSS in 902-928MHz with $\geq 25$ & $<50$ channels: $\leq 0.25$ Watt	<input type="checkbox"/>
	f)	DTS in 902-928MHz, 2400-2483.5MHz: $\leq 1$ Watt	<input checked="" type="checkbox"/>
Test Setup	 <p style="text-align: center;">Spectrum Analyzer                      EUT</p>		
Test Procedure	<p>558074 D01 DTS MEAS Guidance v03r03, 9.1.2 Integrated band power method Maximum output power measurement procedure</p> <p>a) Set the RBW <math>\geq</math> DTS bandwidth. b) Set VBW <math>\geq 3 \times</math> RBW. c) Set span <math>\geq 3 \times</math> RBW d) Sweep time = auto couple. e) Detector = peak. f) Trace mode = max hold. g) Allow trace to fully stabilize. h) Use peak marker function to determine the peak amplitude level.</p>		
Remark			
Result	<input checked="" type="checkbox"/> Pass <input type="checkbox"/> Fail		

Test Data ☒ Yes ☐ N/A

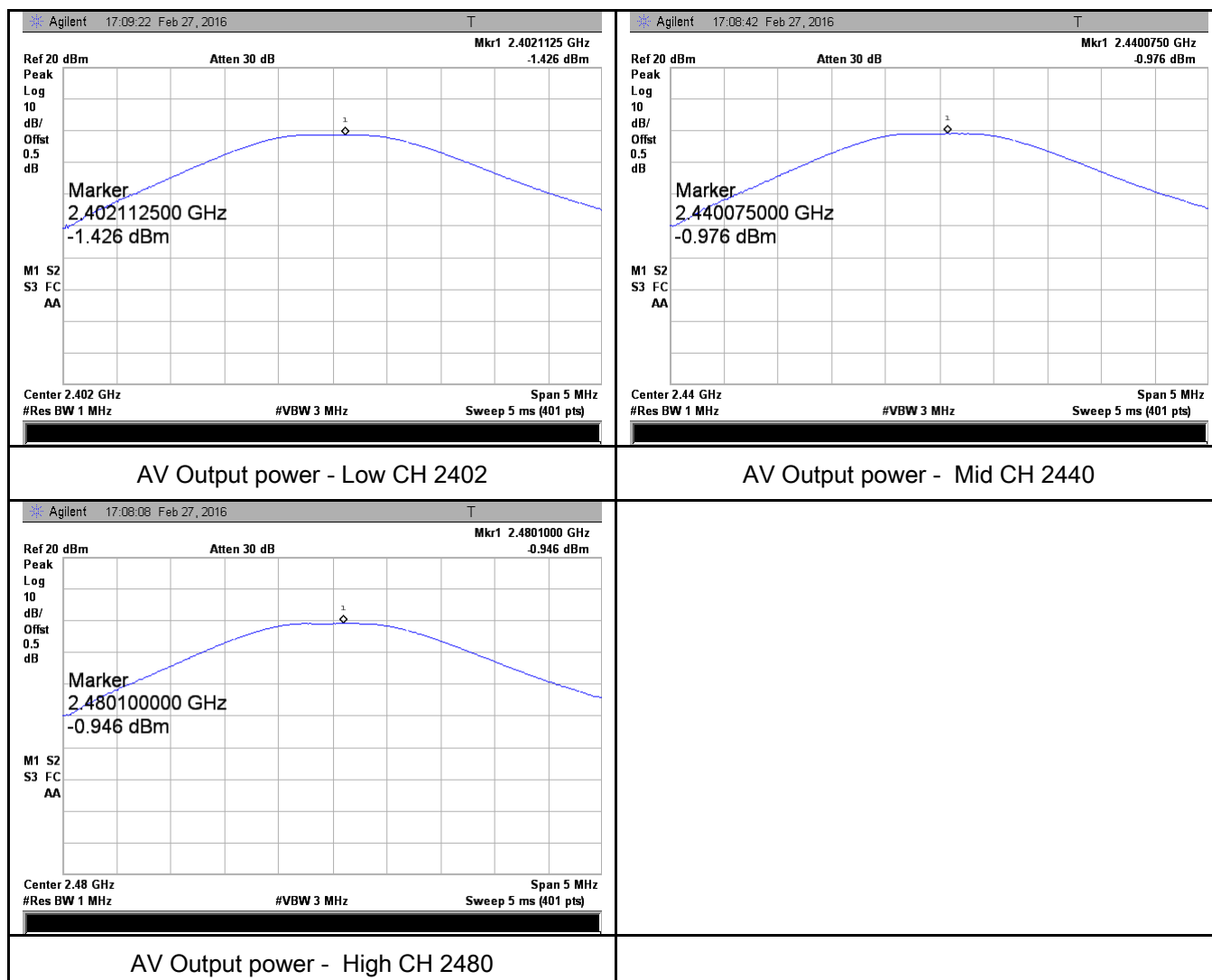
Test Plot ☒ Yes (See below) ☐ N/A

## Output Power measurement result

### Test Data

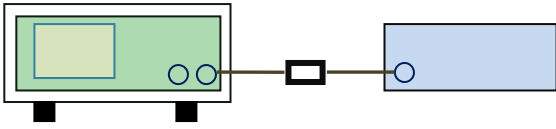
Type	CH	Freq (MHz)	Conducted Power (dBm)	Limit (dBm)	Result
Output power	Low	2402	-1.426	30	Pass
	Mid	2440	-0.976	30	Pass
	High	2480	<b>-0.946</b>	30	Pass

### Test Plots



## 6.4 Power Spectral Density

Temperature	24°C
Relative Humidity	51%
Atmospheric Pressure	1027mbar
Test date :	February 27, 2016
Tested By :	Winnie Zhang

Spec	Item	Requirement	Applicable
§15.247(e)	a)	The power spectral density conducted from the intentional radiator to the antenna shall not be greater than 8 dBm in any 3 kHz band during any time interval of continuous transmission.	<input checked="" type="checkbox"/>
Test Setup	 <p style="text-align: center;">Spectrum Analyzer                      EUT</p>		
Test Procedure	<p>558074 D01 DTS MEAS Guidance v03r03, 10.2 power spectral density method power spectral density measurement procedure</p> <ul style="list-style-type: none"> <li>- a) Set analyzer center frequency to DTS channel center frequency.</li> <li>- b) Set the span to 1.5 times the DTS bandwidth.</li> <li>- c) Set the RBW to: <math>3 \text{ kHz} \leq \text{RBW} \leq 100 \text{ kHz}</math>.</li> <li>- d) Set the VBW <math>\geq 3 \times \text{RBW}</math>.</li> <li>- e) Detector = peak.</li> <li>- f) Sweep time = auto couple.</li> <li>- g) Trace mode = max hold.</li> <li>- h) Allow trace to fully stabilize.</li> <li>- i) Use the peak marker function to determine the maximum amplitude level within the RBW.</li> <li>- j) If measured value exceeds limit, reduce RBW (no less than 3 kHz) and repeat.</li> </ul>		
Remark			
Result	<input checked="" type="checkbox"/> Pass <input type="checkbox"/> Fail		

Test Data    ☒ Yes                      ☐ N/A

Test Plot    ☒ Yes (See below)                      ☐ N/A

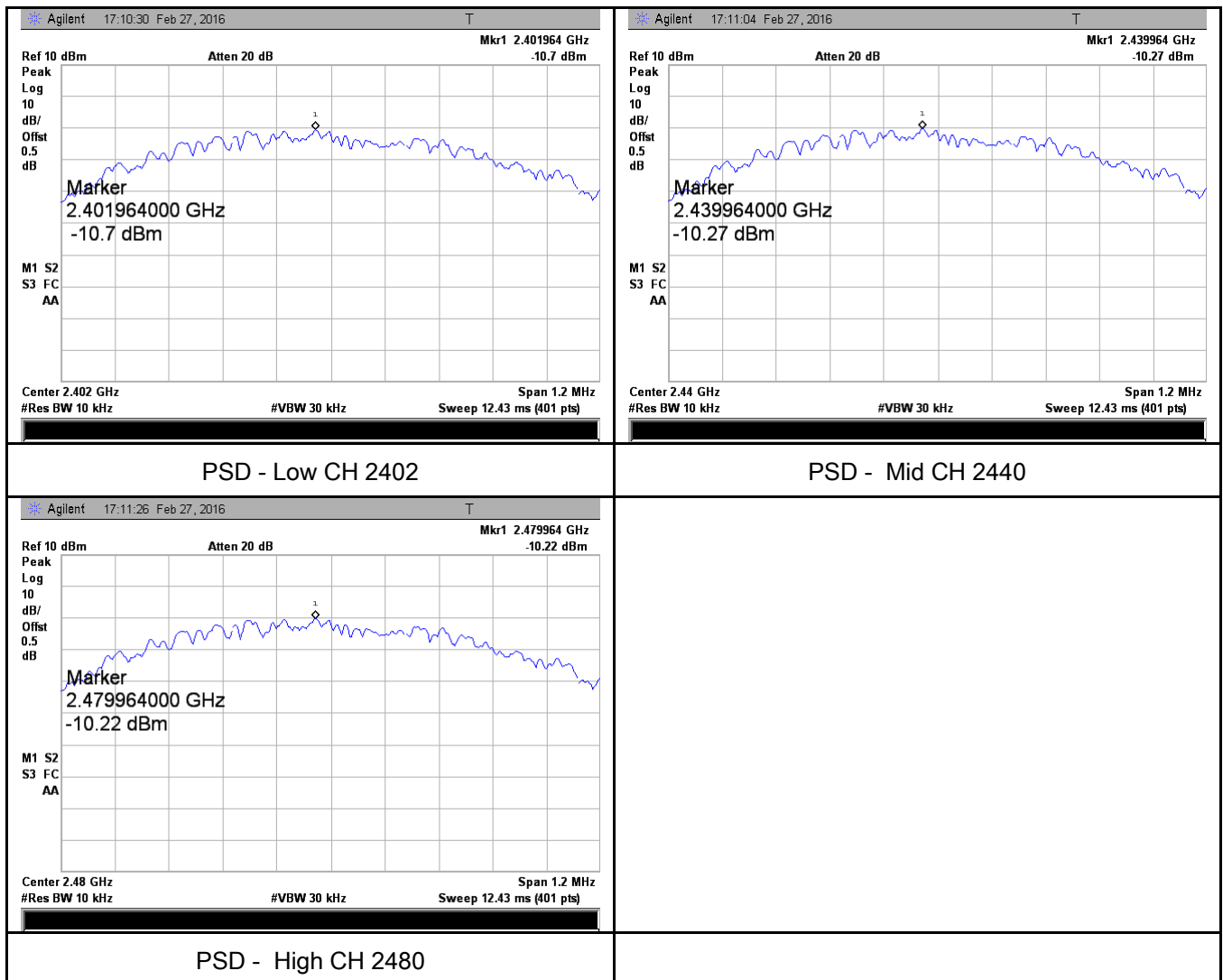
## Power Spectral Density measurement result

### Test Data

Type	CH	Freq (MHz)	Reading (dBm)	Factor (dB)	Result (dBm)	Limit (dBm)	Result
PSD	Low	2402	-10.70	-5.23	-15.93	8	Pass
	Mid	2440	-10.27	-5.23	-15.50	8	Pass
	High	2480	-10.22	-5.23	-15.45	8	Pass

Note: factor=10log(3/10)=-5.23

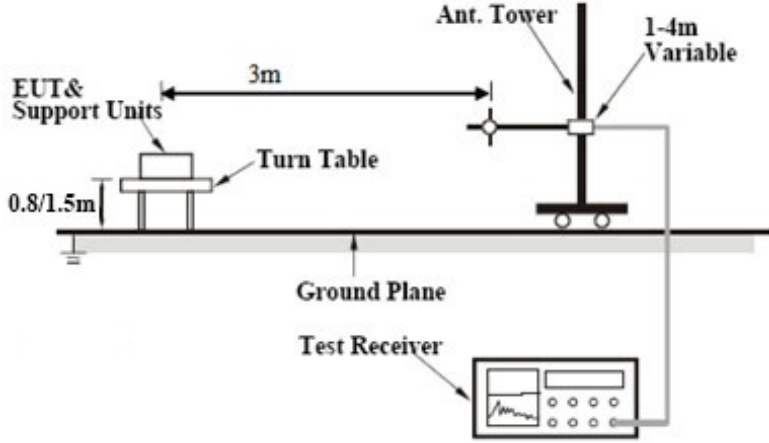
### Test Plots



## 6.5 Band-Edge & Unwanted Emissions into Non-Restricted Frequency Bands

Temperature	23°C
Relative Humidity	58%
Atmospheric Pressure	1006mbar
Test date :	April 06, 2016
Tested By :	Winnie Zhang

### Requirement(s):

Spec	Item	Requirement	Applicable
§15.247(d)	a)	In any 100 kHz bandwidth outside the frequency band in which the spread spectrum or digitally modulated intentional radiator is operating, the radio frequency power that is produced by the intentional radiator shall be at least 20 dB below that in the 100 kHz bandwidth within the band that contains the highest level of the desired power, based on either an RF conducted or a radiated measurement, provided the transmitter demonstrates compliance with the peak conducted power limits.	<input checked="" type="checkbox"/>
Test Setup			
Test Procedure	<p>Radiated Method Only</p> <ul style="list-style-type: none"> <li>1. Check the calibration of the measuring instrument using either an internal calibrator or a known signal from an external generator.</li> <li>2. Position the EUT without connection to measurement instrument. Put it on the Rotated table and turn on the EUT and make it operate in transmitting mode. Then set it to Low Channel and High Channel within its operating range, and make sure the instrument is operated in its linear range.</li> </ul>		



Test Report No.	16070254-FCC-R4
Page	17 of 44

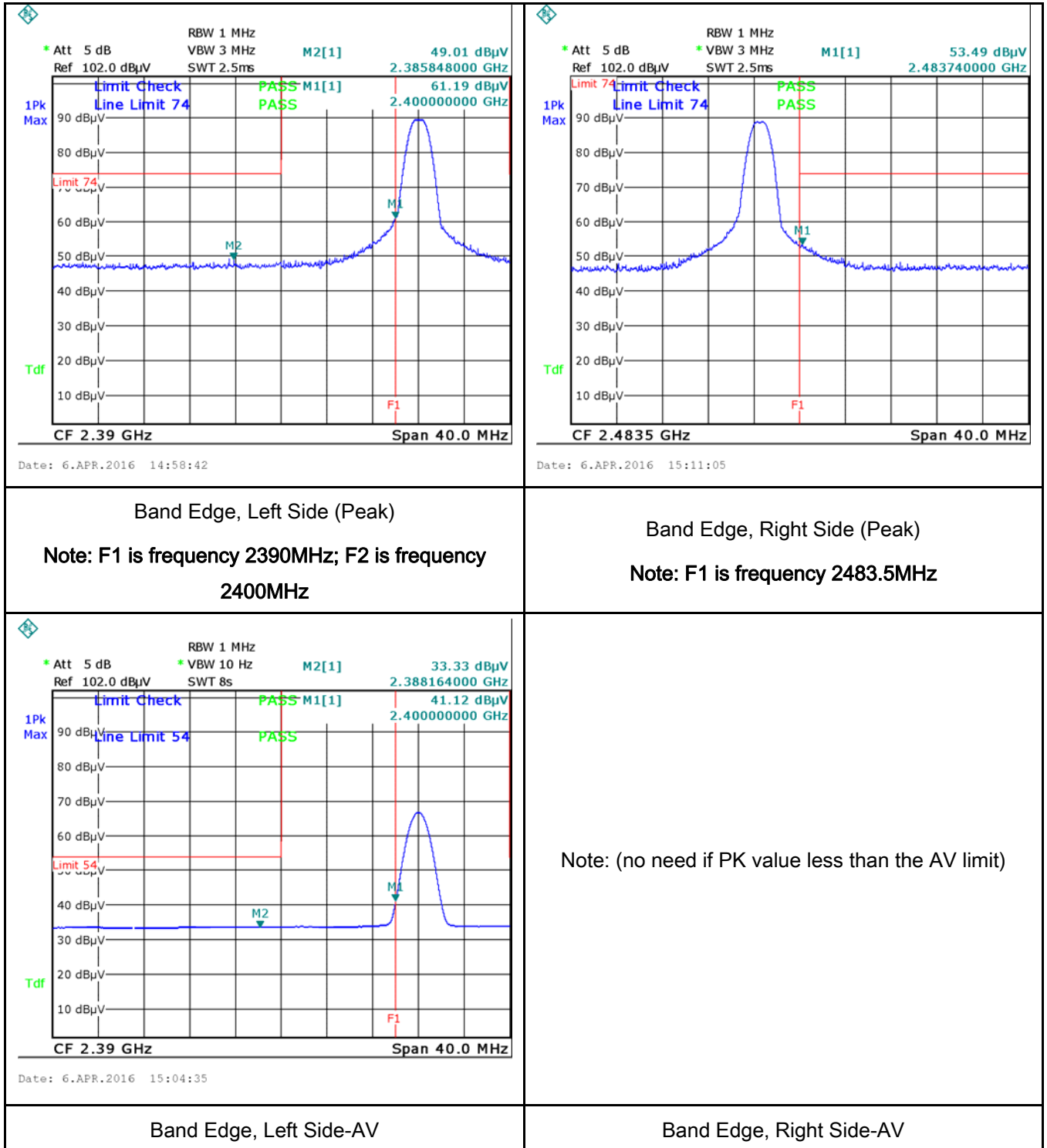
	<ul style="list-style-type: none"> <li>- 3. First, set both RBW and VBW of spectrum analyzer to 100 kHz with a convenient frequency span including 100kHz bandwidth from band edge, check the emission of EUT, if pass then set Spectrum Analyzer as below: <ul style="list-style-type: none"> <li>a. The resolution bandwidth and video bandwidth of test receiver/spectrum analyzer is 120 kHz for Quasiy Peak detection at frequency below 1GHz.</li> <li>b. The resolution bandwidth of test receiver/spectrum analyzer is 1MHz and video bandwidth is 3MHz with Peak detection for Peak measurement at frequency above 1GHz.</li> <li>c. The resolution bandwidth of test receiver/spectrum analyzer is 1MHz and the video bandwidth is 10Hz with Peak detection for Average Measurement as below at frequency above 1GHz.</li> </ul> </li> <li>- 4. Measure the highest amplitude appearing on spectral display and set it as a reference level. Plot the graph with marking the highest point and edge frequency.</li> <li>- 5. Repeat above procedures until all measured frequencies were complete.</li> </ul>
Remark	
Result	<input checked="" type="checkbox"/> Pass <input type="checkbox"/> Fail

Test Data    ☒ Yes                      ☐ N/A

Test Plot     ☒ Yes (See below)            ☐ N/A

## Test Plots

### Band Edge measurement result

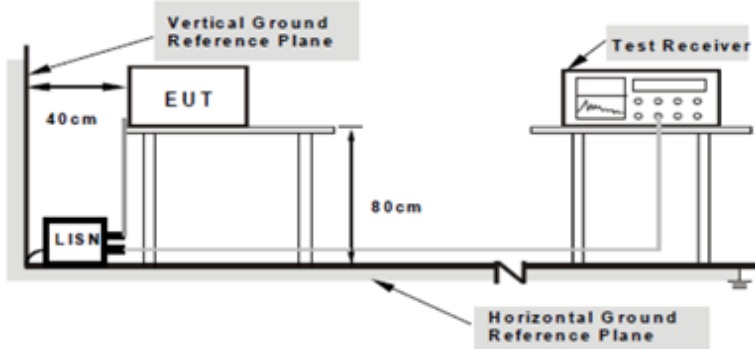


## 6.6 AC Power Line Conducted Emissions

Temperature	23°C
Relative Humidity	58%
Atmospheric Pressure	1006mbar
Test date :	April 06, 2016
Tested By :	Winnie Zhang

### Requirement(s):

Spec	Item	Requirement	Applicable		
47CFR§15.207, RSS210 (A8.1)	a)	For Low-power radio-frequency devices that is designed to be connected to the public utility (AC) power line, the radio frequency voltage that is conducted back onto the AC power line on any frequency or frequencies, within the band 150 kHz to 30 MHz, shall not exceed the limits in the following table, as measured using a 50 [mu] H/50 ohms line impedance stabilization network (LISN). The lower limit applies at the boundary between the frequencies ranges.	<div><input checked="" type="checkbox"/></div>		
		Frequency ranges (MHz)		Limit (dBµV)	
				QP	Average
		0.15 ~ 0.5		66 – 56	56 – 46
		0.5 ~ 5		56	46
5 ~ 30	60	50			

Test Setup	 <p>Note: 1.Support units were connected to second LISN. 2.Both of LISNs (AMN) are 80cm from EUT and at least 80cm from other units and other metal planes support units.</p>
------------	---

Procedure	<ol style="list-style-type: none"> <li>The EUT and supporting equipment were set up in accordance with the requirements of the standard on top of a 1.5m x 1m x 0.8m high, non-metallic table.</li> <li>The power supply for the EUT was fed through a 50W/50mH EUT LISN, connected to filtered mains.</li> <li>The RF OUT of the EUT LISN was connected to the EMI test receiver via a low-loss</li> </ol>
-----------	---

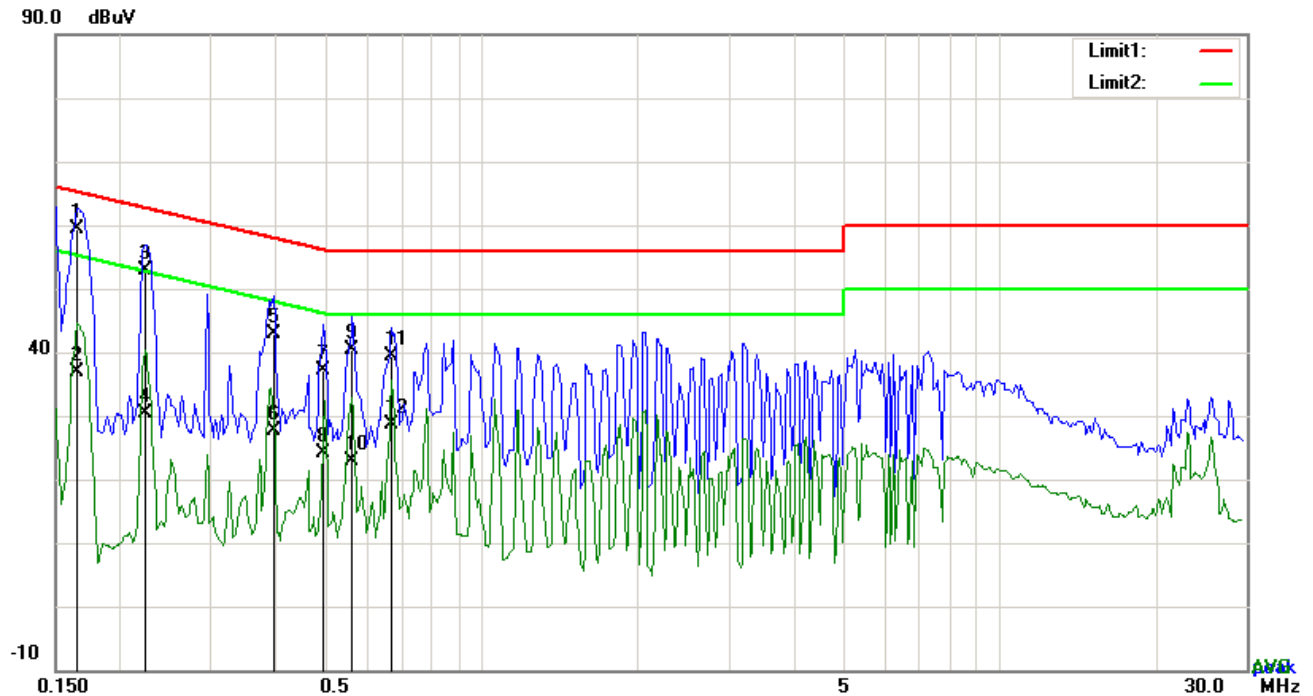
Test Report No.	16070254-FCC-R4
Page	20 of 44

	<p>coaxial cable.</p> <ol style="list-style-type: none"> <li>4. All other supporting equipment were powered separately from another main supply.</li> <li>5. The EUT was switched on and allowed to warm up to its normal operating condition.</li> <li>6. A scan was made on the NEUTRAL line (for AC mains) or Earth line (for DC power) over the required frequency range using an EMI test receiver.</li> <li>7. High peaks, relative to the limit line, The EMI test receiver was then tuned to the selected frequencies and the necessary measurements made with a receiver bandwidth setting of 10 kHz.</li> <li>8. Step 7 was then repeated for the LIVE line (for AC mains) or DC line (for DC power).</li> </ol>
Remark	
Result	<input checked="" type="checkbox"/> Pass <input type="checkbox"/> Fail

Test Data ☒ Yes ☐ N/A

Test Plot ☒ Yes (See below) ☐ N/A

**Test Mode:** Transmitting Mode

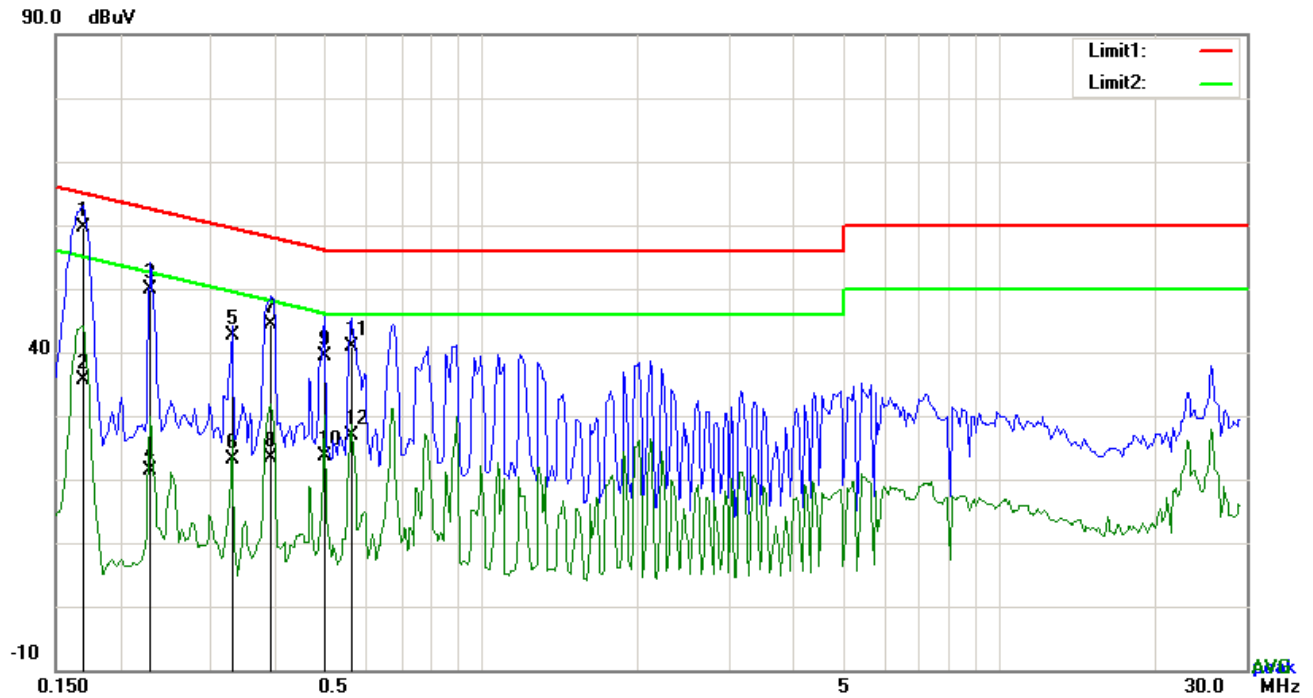


### Test Data

#### Phase Line Plot at 120Vac, 60Hz

No.	P/L	Frequency (MHz)	Reading (dBμV)	Detector	Corrected (dB)	Result (dBμV)	Limit (dBμV)	Margin (dB)
1	L1	0.1656	49.28	QP	10.03	59.31	65.18	-5.87
2	L1	0.1656	26.93	AVG	10.03	36.96	55.18	-18.22
3	L1	0.2241	42.74	QP	10.03	52.77	62.67	-9.90
4	L1	0.2241	20.38	AVG	10.03	30.41	52.67	-22.26
5	L1	0.3957	32.82	QP	10.03	42.85	57.94	-15.09
6	L1	0.3957	17.53	AVG	10.03	27.56	47.94	-20.38
7	L1	0.4932	27.20	QP	10.03	37.23	56.11	-18.88
8	L1	0.4932	14.16	AVG	10.03	24.19	46.11	-21.92
9	L1	0.5634	30.32	QP	10.03	40.35	56.00	-15.65
10	L1	0.5634	12.74	AVG	10.03	22.77	46.00	-23.23
11	L1	0.6687	29.41	QP	10.03	39.44	56.00	-16.56
12	L1	0.6687	18.55	AVG	10.03	28.58	46.00	-17.42

**Test Mode:** Transmitting Mode

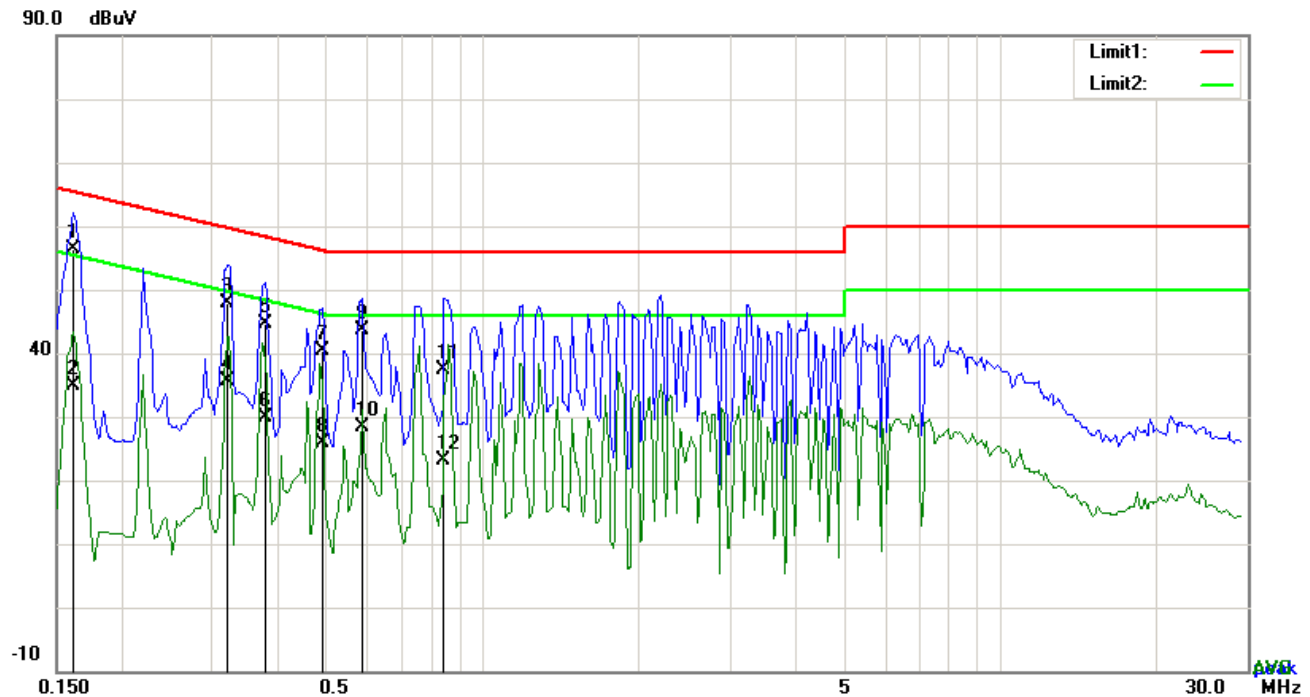


**Test Data**

**Phase Neutral Plot at 120Vac, 60Hz**

No.	P/L	Frequency (MHz)	Reading (dBμV)	Detector	Corrected (dB)	Result (dBμV)	Limit (dBμV)	Margin (dB)
1	N	0.1695	49.71	QP	10.02	59.73	64.98	-5.25
2	N	0.1695	25.57	AVG	10.02	35.59	54.98	-19.39
3	N	0.2280	39.80	QP	10.02	49.82	62.52	-12.70
4	N	0.2280	11.36	AVG	10.02	21.38	52.52	-31.14
5	N	0.3294	32.66	QP	10.02	42.68	59.47	-16.79
6	N	0.3294	13.12	AVG	10.02	23.14	49.47	-26.33
7	N	0.3918	34.35	QP	10.02	44.37	58.03	-13.66
8	N	0.3918	13.41	AVG	10.02	23.43	48.03	-24.60
9	N	0.4971	29.25	QP	10.02	39.27	56.05	-16.78
10	N	0.4971	13.66	AVG	10.02	23.68	46.05	-22.37
11	N	0.5595	30.92	QP	10.02	40.94	56.00	-15.06
12	N	0.5595	16.98	AVG	10.02	27.00	46.00	-19.00

**Test Mode:** Transmitting Mode

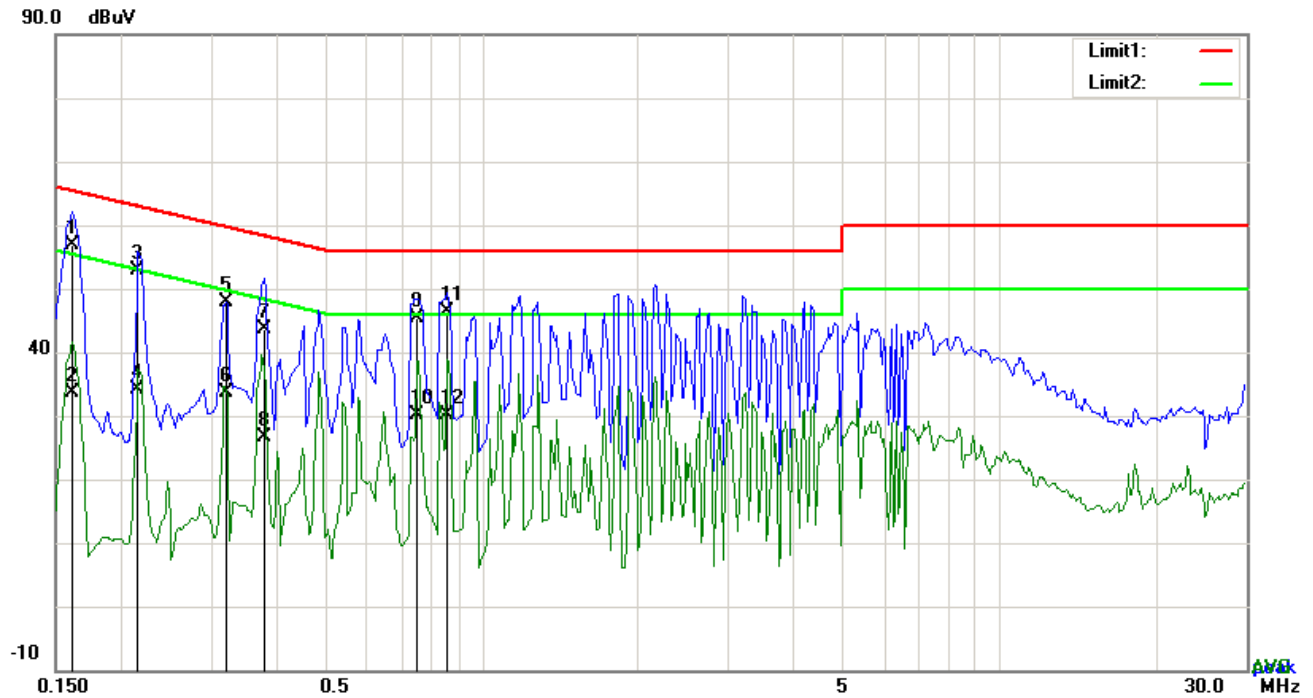


*Test Data*

Phase Line Plot at 240Vac, 60Hz

No.	P/L	Frequency (MHz)	Reading (dBμV)	Detector	Corrected (dB)	Result (dBμV)	Limit (dBμV)	Margin (dB)
1	L1	0.1617	46.29	QP	10.03	56.32	65.38	-9.06
2	L1	0.1617	24.77	AVG	10.03	34.80	55.38	-20.58
3	L1	0.3216	37.96	QP	10.03	47.99	59.67	-11.68
4	L1	0.3216	25.48	AVG	10.03	35.51	49.67	-14.16
5	L1	0.3801	34.60	QP	10.03	44.63	58.28	-13.65
6	L1	0.3801	19.84	AVG	10.03	29.87	48.28	-18.41
7	L1	0.4893	30.33	QP	10.03	40.36	56.18	-15.82
8	L1	0.4893	15.81	AVG	10.03	25.84	46.18	-20.34
9	L1	0.5829	33.66	QP	10.03	43.69	56.00	-12.31
10	L1	0.5829	18.29	AVG	10.03	28.32	46.00	-17.68
11	L1	0.8403	27.31	QP	10.03	37.34	56.00	-18.66
12	L1	0.8403	13.01	AVG	10.03	23.04	46.00	-22.96

**Test Mode:** Transmitting Mode



**Test Data**

**Phase Neutral Plot at 240Vac, 60Hz**

No.	P/L	Frequency (MHz)	Reading (dBμV)	Detector	Corrected (dB)	Result (dBμV)	Limit (dBμV)	Margin (dB)
1	N	0.1617	46.92	QP	10.02	56.94	65.38	-8.44
2	N	0.1617	23.73	AVG	10.02	33.75	55.38	-21.63
3	N	0.2163	42.97	QP	10.02	52.99	62.96	-9.97
4	N	0.2163	24.01	AVG	10.02	34.03	52.96	-18.93
5	N	0.3216	37.83	QP	10.02	47.85	59.67	-11.82
6	N	0.3216	23.49	AVG	10.02	33.51	49.67	-16.16
7	N	0.3801	33.51	QP	10.02	43.53	58.28	-14.75
8	N	0.3801	16.60	AVG	10.02	26.62	48.28	-21.66
9	N	0.7506	35.44	QP	10.03	45.47	56.00	-10.53
10	N	0.7506	20.07	AVG	10.03	30.10	46.00	-15.90
11	N	0.8559	36.44	QP	10.03	46.47	56.00	-9.53
12	N	0.8559	20.15	AVG	10.03	30.18	46.00	-15.82

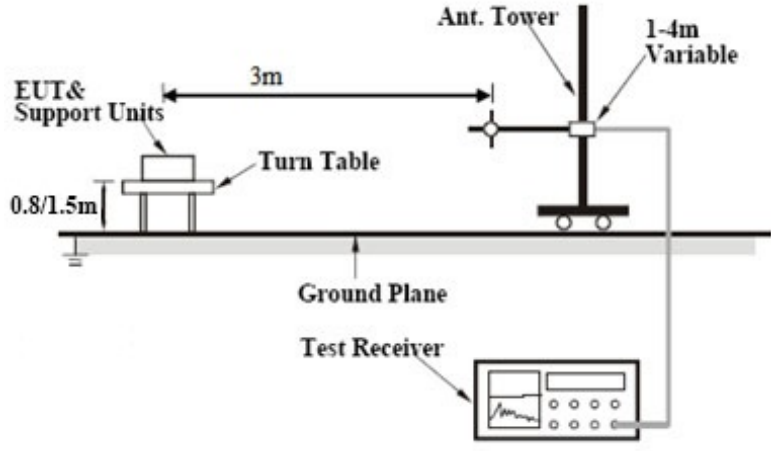


## 6.7 Radiated Spurious Emissions

Temperature	23°C
Relative Humidity	58%
Atmospheric Pressure	1006mbar
Test date :	April 06, 2016 & April 26, 2016
Tested By :	Winnie Zhang

### Requirement(s):

Spec	Item	Requirement	Applicable										
47CFR§15.247(d), RSS210 (A8.5)	a)	<div>Except higher limit as specified elsewhere in other section, the emissions from the low-power radio-frequency devices shall not exceed the field strength levels specified in the following table and the level of any unwanted emissions shall not exceed the level of the fundamental emission. The tighter limit applies at the band edges</div> <table><tr><th>Frequency range (MHz)</th><th>Field Strength (µV/m)</th></tr><tr><td>30 – 88</td><td>100</td></tr><tr><td>88 – 216</td><td>150</td></tr><tr><td>216 960</td><td>200</td></tr><tr><td>Above 960</td><td>500</td></tr></table>	Frequency range (MHz)	Field Strength (µV/m)	30 – 88	100	88 – 216	150	216 960	200	Above 960	500	<div><input checked="" type="checkbox"/></div>
	Frequency range (MHz)	Field Strength (µV/m)											
	30 – 88	100											
88 – 216	150												
216 960	200												
Above 960	500												
b)	<div>For non-restricted band, In any 100 kHz bandwidth outside the frequency band in which the spread spectrum or digitally modulated intentional radiator is operating, the radio frequency power that is produced by the intentional radiator shall be at least 20 dB or 30dB below that in the 100 kHz bandwidth within the band that contains the highest level of the desired power, determined by the measurement method on output power to be used. Attenuation below the general limits specified in § 15.209(a) is not required</div> <div><input checked="" type="checkbox"/> 20 dB down      <input type="checkbox"/> 30 dB down</div>	<div><input checked="" type="checkbox"/></div>											
c)	<div>or restricted band, emission must also comply with the radiated emission limits specified in 15.209</div>	<div><input checked="" type="checkbox"/></div>											

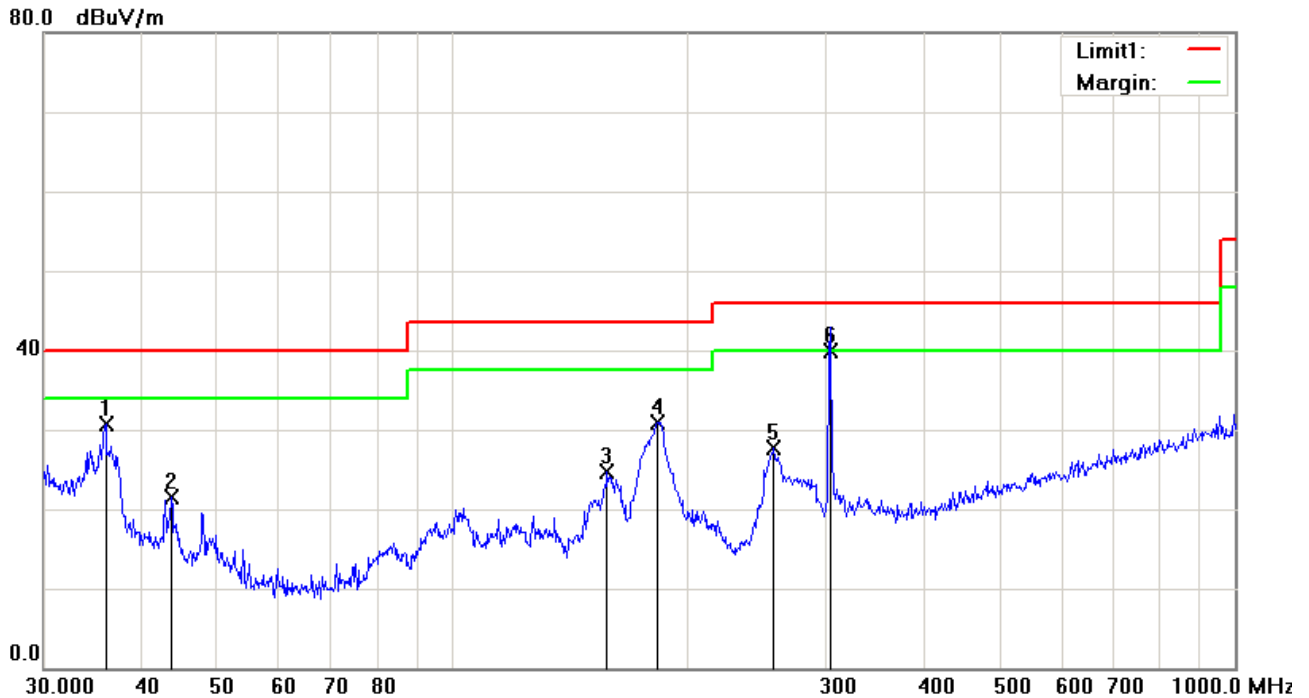
Test Setup	
Procedure	<ol style="list-style-type: none"> <li>The EUT was switched on and allowed to warm up to its normal operating condition.</li> <li>The test was carried out at the selected frequency points obtained from the EUT characterization. Maximization of the emissions, was carried out by rotating the EUT, changing the antenna polarization, and adjusting the antenna height in the following manner: <ol style="list-style-type: none"> <li>Vertical or horizontal polarization (whichever gave the higher emission level over a full rotation of the EUT) was chosen.</li> <li>The EUT was then rotated to the direction that gave the maximum emission.</li> <li>Finally, the antenna height was adjusted to the height that gave the maximum emission.</li> </ol> </li> <li>The resolution bandwidth and video bandwidth of test receiver/spectrum analyzer is 120 kHz for Quasiy Peak detection at frequency below 1GHz.</li> <li>The resolution bandwidth of test receiver/spectrum analyzer is 1MHz and video bandwidth is 3MHz with Peak detection for Peak measurement at frequency above 1GHz. The resolution bandwidth of test receiver/spectrum analyzer is 1MHz and the video bandwidth is 10Hz with Peak detection for Average Measurement as below at frequency above 1GHz.</li> <li>Steps 2 and 3 were repeated for the next frequency point, until all selected frequency points were measured.</li> </ol>
Remark	Different RF configuration has been evaluated but not much difference was found. The data presented here is the worst case data with EUT under 802.11n – HT20-2437MHz mode.
Result	<input checked="" type="checkbox"/> Pass <input type="checkbox"/> Fail

Test Data ☒ Yes ☐ N/A

Test Plot ☒ Yes (See below) ☐ N/A

**Test Mode:** Transmitting Mode

**Below 1GHz**



**Test Data**

**Vertical Polarity Plot @3m**

No	P/L	Frequency (MHz)	Reading (dBμV)	Detector	Corrected (dB)	Result (dBμV)	Limit (dBμV)	Margin (dB)	Height	Degree
1	H	36.0007	35.35	peak	-4.67	30.68	40.00	-9.32	100	19
2	H	43.6585	31.47	peak	-10.04	21.43	40.00	-18.57	100	359
3	H	157.5589	33.01	peak	-8.31	24.70	43.50	-18.80	100	192
4	H	182.5592	40.67	peak	-9.72	30.95	43.50	-12.55	100	143
5	H	257.4222	36.62	peak	-8.85	27.77	46.00	-18.23	100	199
6	H	303.5437	46.78	QP	-6.80	39.98	46.00	-6.02	100	225

## Below 1GHz



## Test Data

### Horizontal Polarity Plot @3m

No	P/L	Frequency (MHz)	Reading (dBμV)	Detector	Corrected (dB)	Result (dBμV)	Limit (dBμV)	Margin (dB)	Height	Degree
1	V	30.0000	33.04	peak	-0.26	32.78	40.00	-7.22	100	171
2	V	35.7491	34.35	peak	-4.49	29.86	40.00	-10.14	100	145
3	V	47.8260	42.15	peak	-12.20	29.95	40.00	-10.05	100	164
4	V	102.3597	37.37	peak	-10.38	26.99	43.50	-16.51	100	261
5	V	173.8135	41.86	peak	-9.41	32.45	43.50	-11.05	100	0
6	V	303.5437	41.85	peak	-6.80	35.05	46.00	-10.95	100	220

## Above 1GHz

Test Mode:	Transmitting Mode
------------	-------------------

### Low Channel (2402 MHz)

Frequency (MHz)	S.A. Reading (dBμV)	Detector (PK/AV)	Polarity (H/V)	Ant. Factor (dB/m)	Cable Loss (dB)	Pre-Amp. Gain (dB)	Cord. Amp. (dBμV/m)	Limit (dBμV/m)	Margin (dB)
4804	38.95	AV	V	33.83	6.86	31.72	47.92	54	-6.08
4804	38.46	AV	H	33.83	6.86	31.72	47.43	54	-6.57
4804	47.13	PK	V	33.83	6.86	31.72	56.1	74	-17.90
4804	46.21	PK	H	33.83	6.86	31.72	55.18	74	-18.82
17616	24.31	AV	V	45.26	11.71	34.54	46.74	54	-7.26
17616	26.38	AV	H	45.26	11.71	34.54	48.81	54	-5.19
17616	45.63	PK	V	45.26	11.71	34.54	68.06	74	-5.94
17616	47.45	PK	H	45.26	11.71	34.54	69.88	74	-4.12

### Middle Channel (2440 MHz)

Frequency (MHz)	S.A. Reading (dBμV)	Detector (PK/AV)	Polarity (H/V)	Ant. Factor (dB/m)	Cable Loss (dB)	Pre-Amp. Gain (dB)	Cord. Amp. (dBμV/m)	Limit (dBμV/m)	Margin (dB)
4880	39.25	AV	V	33.86	6.82	31.82	48.11	54	-5.89
4880	38.15	AV	H	33.86	6.82	31.82	47.01	54	-6.99
4880	44.89	PK	V	33.86	6.82	31.82	53.75	74	-20.25
4880	45.64	PK	H	33.86	6.82	31.82	54.5	74	-19.50
17659	24.36	AV	V	45.29	11.73	34.54	46.84	54	-7.16
17659	25.88	AV	H	45.29	11.73	34.54	48.36	54	-5.64
17659	45.61	PK	V	45.29	11.73	34.54	68.09	74	-5.91
17659	46.74	PK	H	45.29	11.73	34.54	69.22	74	-4.78

### High Channel (2480 MHz)

Frequency (MHz)	S.A. Reading (dBμV)	Detector (PK/AV)	Polarity (H/V)	Ant. Factor (dB/m)	Cable Loss (dB)	Pre-Amp. Gain (dB)	Cord. Amp. (dBμV/m)	Limit (dBμV/m)	Margin (dB)
4960	38.17	AV	V	33.9	6.76	31.92	46.91	54	-7.09
4960	36.34	AV	H	33.9	6.76	31.92	45.08	54	-8.92
4960	47.24	PK	V	33.9	6.76	31.92	55.98	74	-18.02
4960	46.28	PK	H	33.9	6.76	31.92	55.02	74	-18.98
17685	24.36	AV	V	45.3	11.76	34.54	46.88	54	-7.12
17685	26.71	AV	H	45.3	11.76	34.54	49.23	54	-4.77
17685	43.52	PK	V	45.3	11.76	34.54	66.04	74	-7.96
17685	44.47	PK	H	45.22	11.76	32.54	68.91	74	-5.09

**Note:**

1, The testing has been conformed to  $10 \times 2480 \text{ MHz} = 24,800 \text{ MHz}$

2, All other emissions more than 30 dB below the limit

## Annex A. TEST INSTRUMENT

2015-2016

Instrument	Model	Serial #	Cal Date	Cal Due	In use
<b>AC Line Conducted</b>					
EMI test receiver	ESCS30	8471241027	09/17/2015	09/16/2016	<input checked="" type="checkbox"/>
Line Impedance	LI-125A	191106	09/25/2015	09/24/2016	<input checked="" type="checkbox"/>
Line Impedance	LI-125A	191107	09/25/2015	09/24/2016	<input checked="" type="checkbox"/>
LISN	ISN T800	34373	09/25/2015	09/24/2016	<input checked="" type="checkbox"/>
Double Ridge Horn Antenna (1 ~18GHz)	AH-118	71283	09/24/2015	09/23/2016	<input checked="" type="checkbox"/>
Transient Limiter	LIT-153	531118	09/01/2015	08/31/2016	<input checked="" type="checkbox"/>
<b>RF conducted test</b>					
Agilent ESA-E SERIES	E4407B	MY45108319	09/17/2015	09/16/2016	<input checked="" type="checkbox"/>
Power Splitter	1#	1#	09/01/2015	08/31/2016	<input checked="" type="checkbox"/>
DC Power Supply	E3640A	MY40004013	09/17/2015	09/16/2016	<input checked="" type="checkbox"/>
<b>Radiated Emissions</b>					
EMI test receiver	ESL6	100262	09/17/2015	09/16/2016	<input checked="" type="checkbox"/>
Positioning Controller	UC3000	MF780208282	11/19/2015	11/18/2016	<input checked="" type="checkbox"/>
OPT 010 AMPLIFIER (0.1-1300MHz)	8447E	2727A02430	09/01/2015	08/31/2016	<input checked="" type="checkbox"/>
Microwave Preamplifier (1 ~ 26.5GHz)	8449B	3008A02402	03/25/2015	03/24/2016	<input checked="" type="checkbox"/>
Bilog Antenna (30MHz~6GHz)	JB6	A110712	09/21/2015	09/20/2016	<input checked="" type="checkbox"/>
Double Ridge Horn Antenna (1 ~18GHz)	AH-118	71283	09/24/2015	09/23/2016	<input checked="" type="checkbox"/>
Universal Radio Communication Tester	CMU200	121393	09/25/2015	09/24/2016	<input checked="" type="checkbox"/>

## 2016-2017

Instrument	Model	Serial #	Cal Date	Cal Due	In use
<b>AC Line Conducted</b>					
EMI test receiver	ESCS30	8471241027	09/17/2015	09/16/2016	<input checked="" type="checkbox"/>
Line Impedance	LI-125A	191106	09/25/2015	09/24/2016	<input checked="" type="checkbox"/>
Line Impedance	LI-125A	191107	09/25/2015	09/24/2016	<input checked="" type="checkbox"/>
LISN	ISN T800	34373	09/25/2015	09/24/2016	<input checked="" type="checkbox"/>
Double Ridge Horn Antenna (1 ~18GHz)	AH-118	71283	09/24/2015	09/23/2016	<input checked="" type="checkbox"/>
Transient Limiter	LIT-153	531118	09/01/2015	08/31/2016	<input checked="" type="checkbox"/>
<b>RF conducted test</b>					
Agilent ESA-E SERIES	E4407B	MY45108319	09/17/2015	09/16/2016	<input checked="" type="checkbox"/>
Power Splitter	1#	1#	09/01/2015	08/31/2016	<input checked="" type="checkbox"/>
DC Power Supply	E3640A	MY40004013	09/17/2015	09/16/2016	<input checked="" type="checkbox"/>
<b>Radiated Emissions</b>					
EMI test receiver	ESL6	100262	09/17/2015	09/16/2016	<input checked="" type="checkbox"/>
Positioning Controller	UC3000	MF780208282	11/19/2015	11/18/2016	<input checked="" type="checkbox"/>
OPT 010 AMPLIFIER (0.1-1300MHz)	8447E	2727A02430	09/01/2015	08/31/2016	<input checked="" type="checkbox"/>
Microwave Preamplifier (1 ~ 26.5GHz)	8449B	3008A02402	03/25/2015	03/24/2016	<input checked="" type="checkbox"/>
Bilog Antenna (30MHz~6GHz)	JB6	A110712	09/21/2015	09/20/2016	<input checked="" type="checkbox"/>
Double Ridge Horn Antenna (1 ~18GHz)	AH-118	71283	09/24/2015	09/23/2016	<input checked="" type="checkbox"/>
Universal Radio Communication Tester	CMU200	121393	09/25/2015	09/24/2016	<input checked="" type="checkbox"/>



## Annex B. EUT And Test Setup Photographs

### Annex B.i. Photograph: EUT External Photo



Whole Package View



Adapter - Front View



EUT - Front View



EUT - Rear View

Test Report No.	16070254-FCC-R4
Page	34 of 44



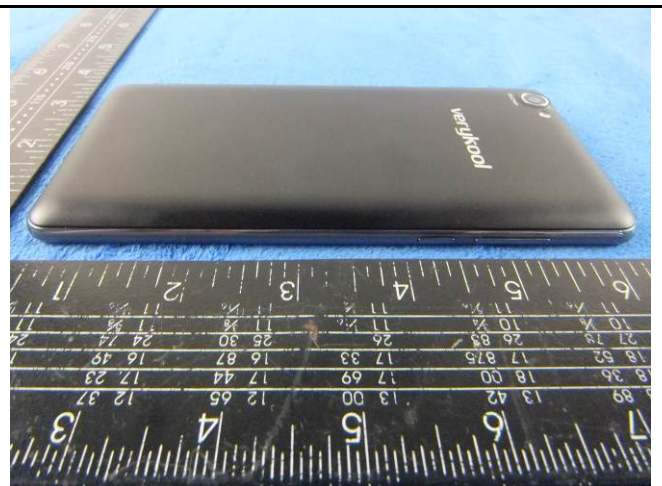
EUT - Top View



EUT - Bottom View



EUT - Left View



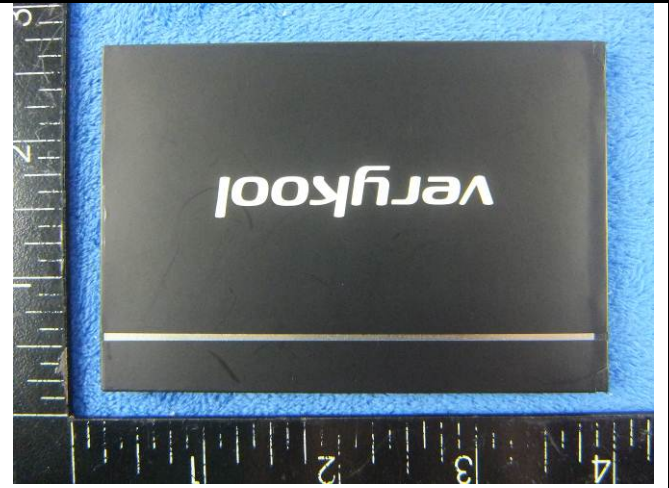
EUT - Right View



**Annex B.ii. Photograph: EUT Internal Photo**



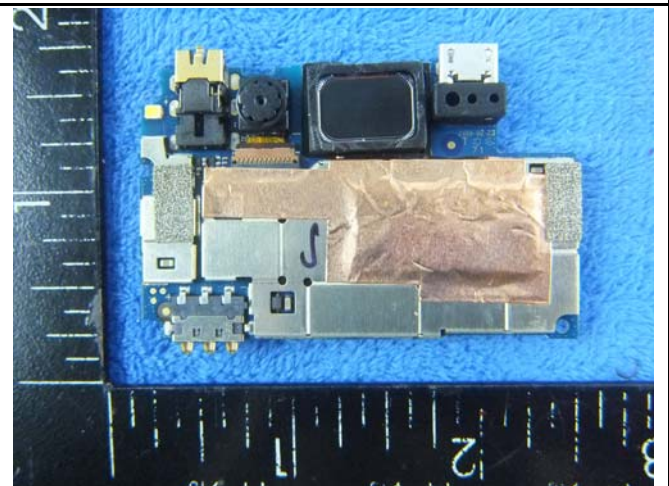
Cover Off - Top View



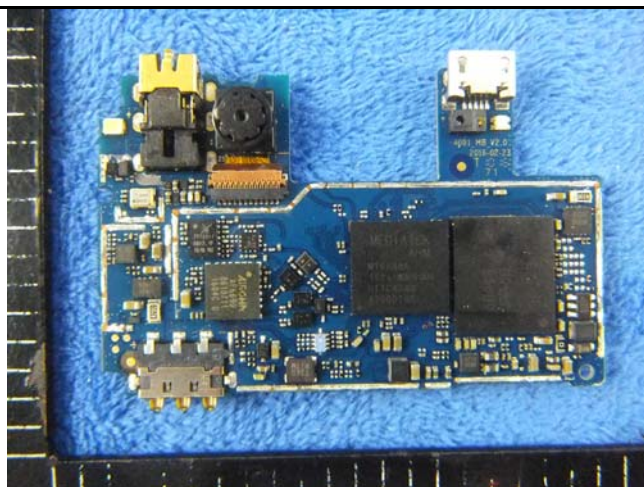
Battery - Front View



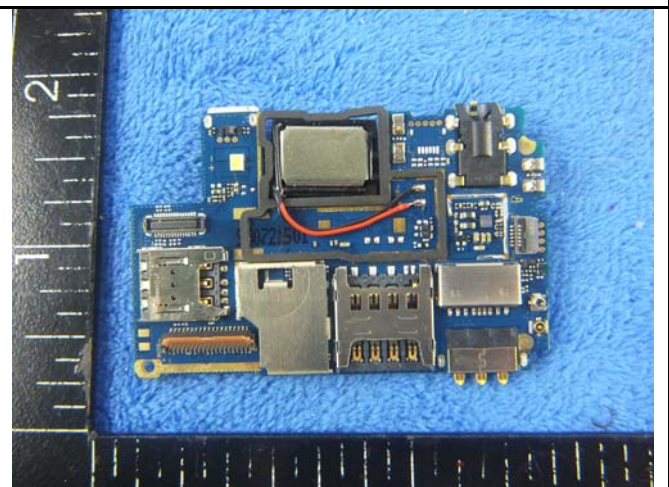
Battery - Rear View



Mainboard with Shielding - Front View



Mainboard without Shielding - Front View

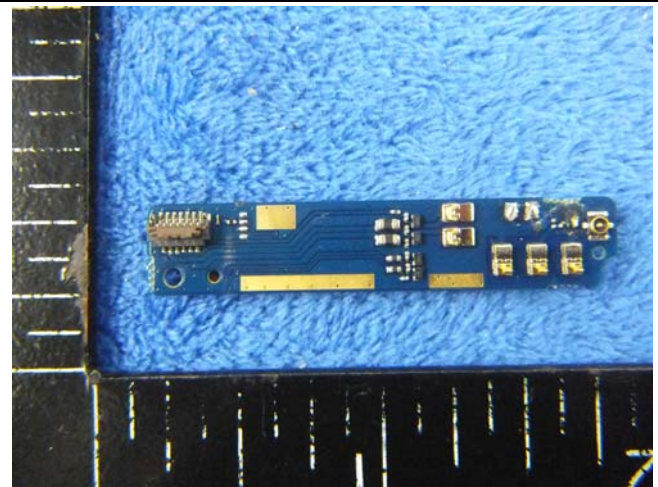


Mainboard with Shielding - Rear View

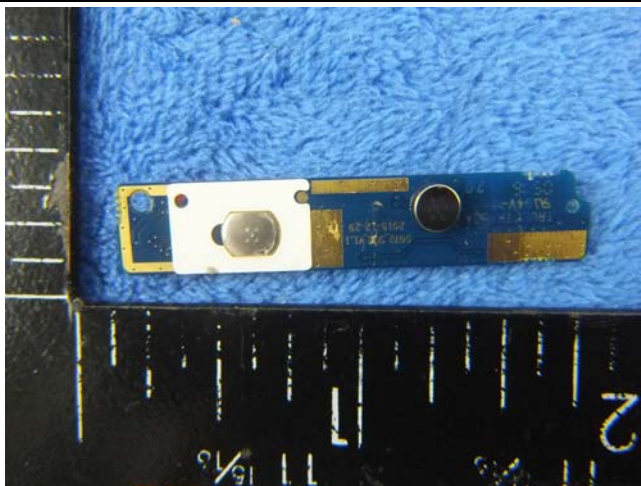




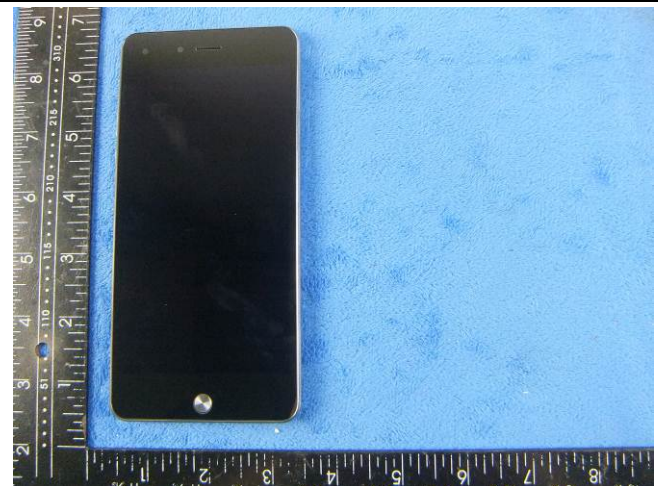
Mainboard without Shielding – Rear View



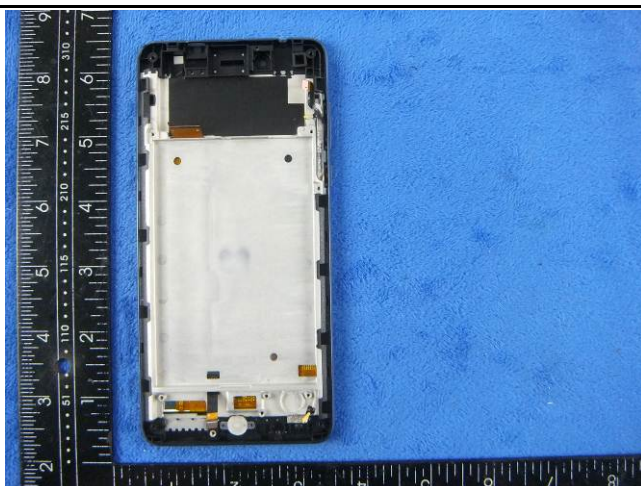
Small Mainboard - Front View



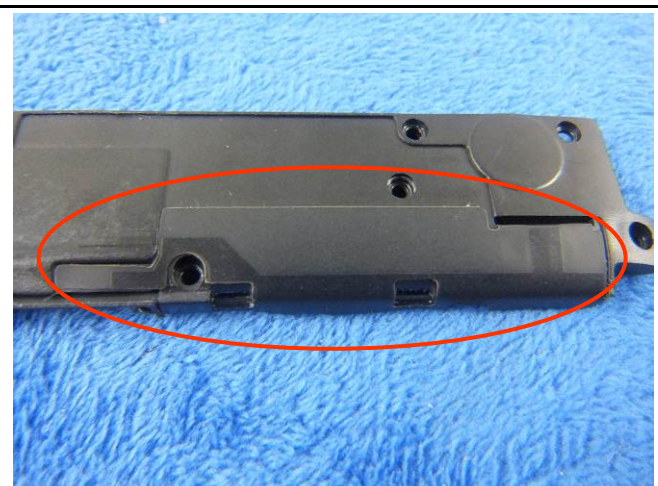
Small Mainboard - Front View



LCD – Front View



LCD – Rear View

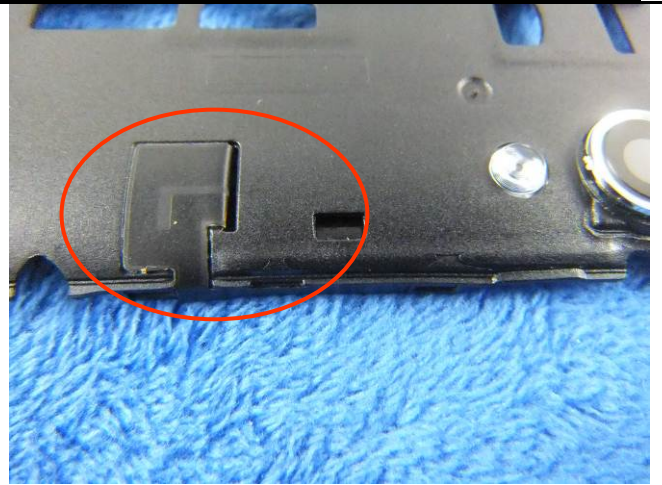


GSM/PCS/UMTS-FDD Antenna View

Test Report No.	16070254-FCC-R4
Page	37 of 44



WIFI/BT/BLE - Antenna View



GPS - Antenna View



**Annex B.iii. Photograph: Test Setup Photo**



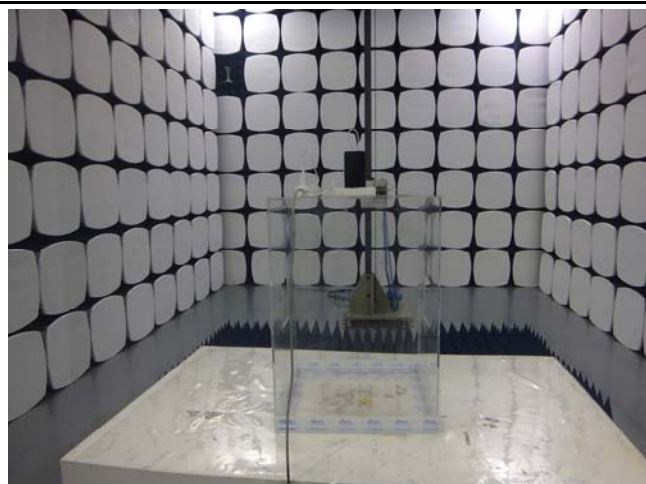
Conducted Emissions Test Setup Front View



Conducted Emissions Test Setup Side View



Radiated Spurious Emissions Test Setup Below 1GHz

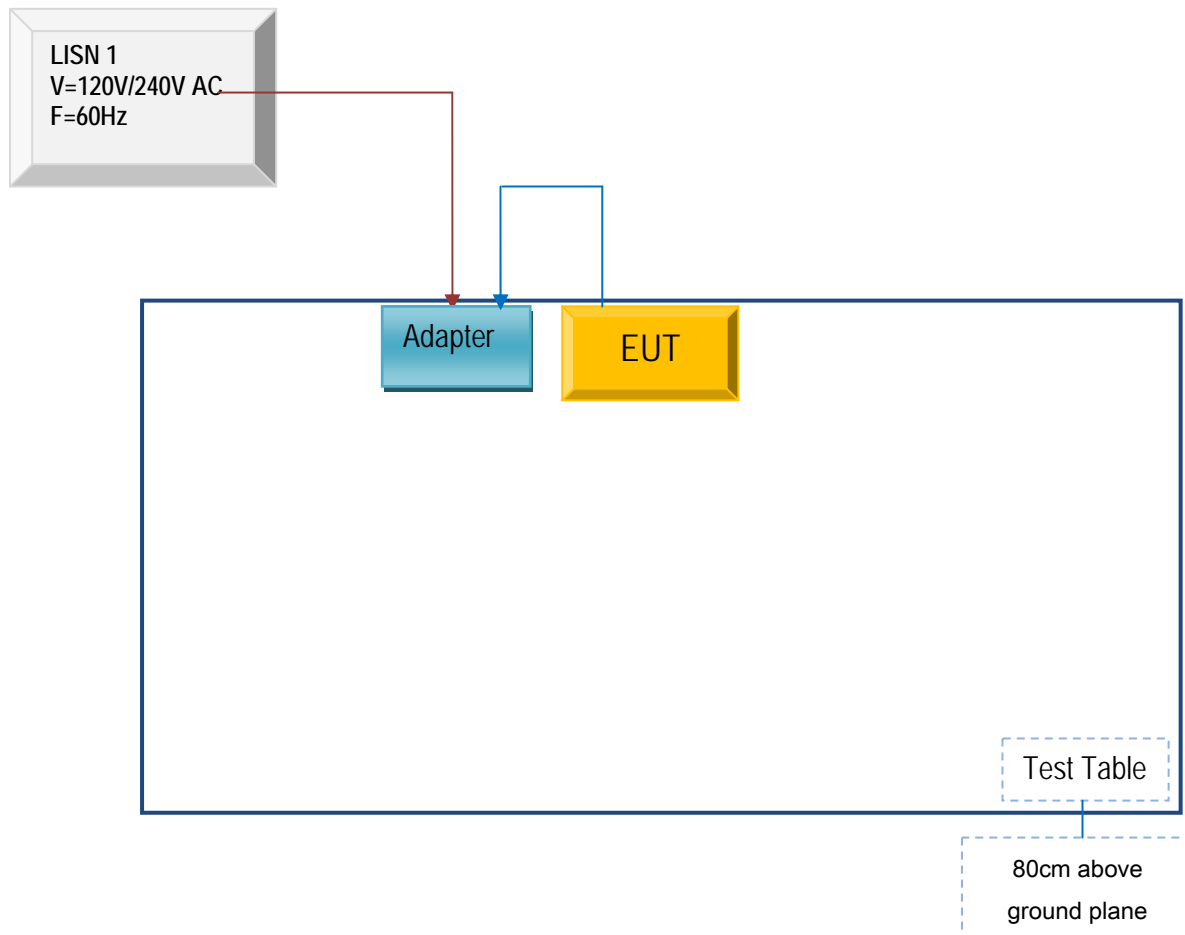


Radiated Spurious Emissions Test Setup Above 1GHz

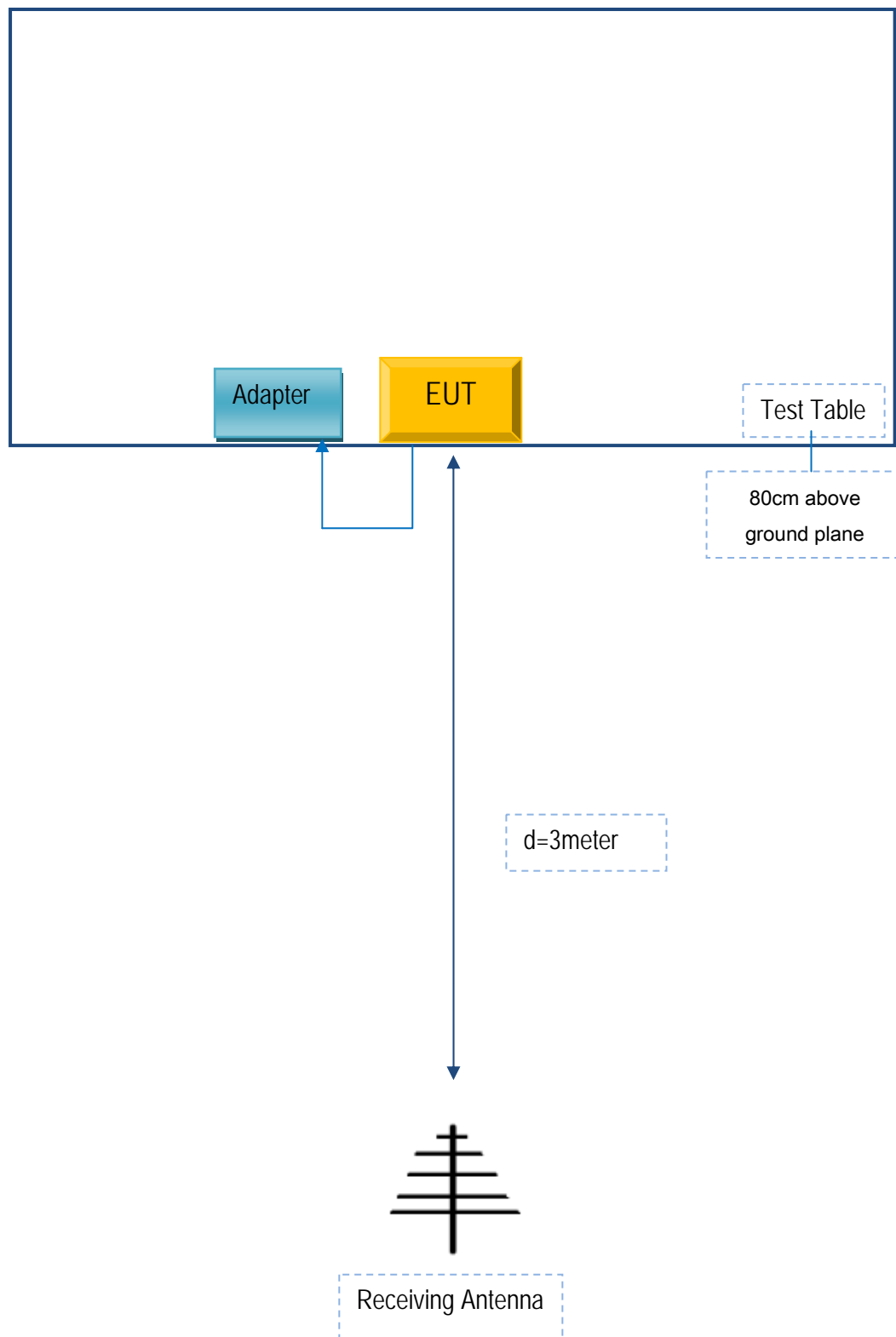
## Annex C. TEST SETUP AND SUPPORTING EQUIPMENT

### Annex C.ii. TEST SET UP BLOCK

#### Block Configuration Diagram for AC Line Conducted Emissions

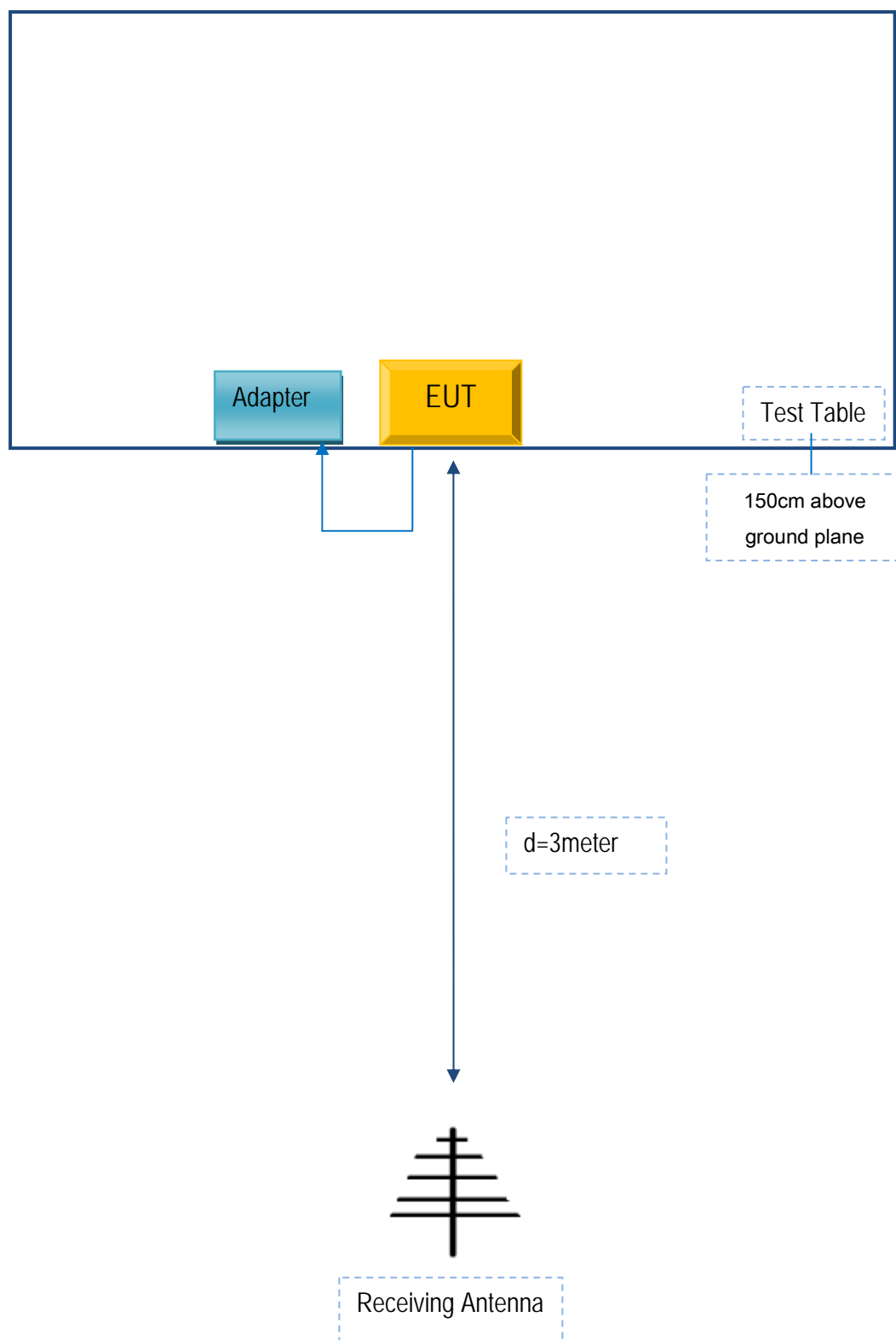


**Block Configuration Diagram for Radiated Emissions ( Below 1GHz ) .**





**Block Configuration Diagram for Radiated Emissions ( Above 1GHz ) .**



## **Annex C. ii. SUPPORTING EQUIPMENT DESCRIPTION**

The following is a description of supporting equipment and details of cables used with the EUT.

### **Supporting Equipment:**

Manufacturer	Equipment Description	Model	Serial No
Verykool USA Inc	Adapter	SC050100-US	Y11243578

### **Supporting Cable:**

Cable type	Shield Type	Ferrite Core	Length	Serial No
USB Cable	Un-shielding	No	0.8m	Y11243578

Test Report No.	16070254-FCC-R4
Page	43 of 44

## Annex D. User Manual / Block Diagram / Schematics / Partlist

N/A

## Annex E. DECLARATION OF SIMILARITY

*verykool*  
Smart. Simple. Safe. Secure.

### Declaration Letter

For our business issue and marketing requirement, we would like to make some change on this model, details as following:

Model No.: s5530 and s5030

We Verykool USA Inc, hereby declare that our product s5530 and s5030, they are using the same PCB and the difference between them are listed as below:

Main Model No.	Series Model No.	Difference
s5030	N/A	For s5530, LCD size is 5.5inch, rear camera is 8MP, battery is 2500mAh, While s5030 LCD is 5inch, rear camera is 5MP, battery is 2200mAh. the original product s5030 was tested by Siemic, project number is 16070105

Thank you!

Sincerely

Signature:



Job Title:

PM Director