



SAR TEST REPORT



Report No.: 16070803-FCC-H

Supersede Report No.:N/A

| | | |
|--|---|---|
| Applicant | Verykool USA Inc | |
| Product Name | Mobile Phone | |
| Model No. | s5007 | |
| Standards | FCC 47 CFR Part2(2.1093) ANSI/IEEE C95.1-1999 IEEE 1528-2013 & Published RF Exposure KDB Procedures | |
| Test Date | July 8 to July 13, 2016 | |
| Issue Date | July 29, 2016 | |
| Test Result | PASS | |
| Equipment complied with the specification | <input checked="" type="checkbox"/> | |
| Equipment did not comply with the specification | <input type="checkbox"/> | |
|  |  |  |
| Wiky Jam Test Engineer | David Huang Checked By | |
| This test report may be reproduced in full only Test result presented in this test report is applicable to the tested sample only | | |

Issued by:
SIEMIC (SHENZHEN-CHINA) LABORATORIES

Zone A, Floor 1, Building 2 Wan Ye Long Technology Park
South Side of Zhoushi Road, Bao'an District, Shenzhen, Guangdong China 518108

Phone: +86 0755 2601 4629801 Email: China@siemic.com.cn

Laboratory Introduction

SIEMIC, headquartered in the heart of Silicon Valley, with superior facilities in US and Asia, is one of the leading independent testing and certification facilities providing customers with one-stop shop services for Compliance Testing and Global Certifications.



In addition to testing and certification, SIEMIC provides initial design reviews and compliance management throughout a project. Our extensive experience with China, Asia Pacific, North America, European, and International compliance requirements, assures the fastest, most cost effective way to attain regulatory compliance for the global markets.

Accreditations for Conformity Assessment

| Country/Region | Scope |
|----------------|------------------------------------|
| USA | EMC, RF/Wireless, SAR, Telecom |
| Canada | EMC, RF/Wireless, SAR, Telecom |
| Taiwan | EMC, RF, Telecom, SAR, Safety |
| Hong Kong | RF/Wireless, SAR, Telecom |
| Australia | EMC, RF, Telecom, SAR, Safety |
| Korea | EMI, EMS, RF, SAR, Telecom, Safety |
| Japan | EMI, RF/Wireless, SAR, Telecom |
| Singapore | EMC, RF, SAR, Telecom |
| Europe | EMC, RF, SAR, Telecom, Safety |

| | |
|-------------|----------------|
| Test Report | 16070803-FCC-H |
| Page | 3 of 105 |

This page has been left blank intentionally.

CONTENTS

| | | |
|----|---|-----|
| 1 | EUT INFORMATION..... | 5 |
| 2 | TECHNICAL DETAILS | 6 |
| 3 | INTRODUCTION..... | 7 |
| 4 | SAR MEASUREMENT SETUP..... | 8 |
| 5 | ANSI/IEEE C95.1 – 1999 RF EXPOSURE LIMIT..... | 19 |
| 6 | SYSTEM AND LIQUID VERIFICATION..... | 20 |
| 7 | UNCERTAINTY ASSESSMENT | 30 |
| 8 | TEST INSTRUMENT | 33 |
| 9 | OUTPUT POWER VERIFICATION | 34 |
| 10 | SAR TEST RESULTS..... | 42 |
| 11 | SAR MEASUREMENT REFERENCES..... | 46 |
| | ANNEX A CALIBRATION REPORTS | 57 |
| | ANNEX B SAR SYSTEM PHOTOGRAPHS..... | 100 |
| | ANNEX C SETUP PHOTOGRAPHS..... | 101 |

1 EUT INFORMATION

| EUT Information | |
|---|---|
| EUT Description | Mobile Phone |
| Model No | s5007 |
| Input Power | Rechargeable Li-ion Battery Model: s5005 Charging Voltage: 3.7V, 2000mAh,7.4Wh Limited charger voltage:4.2V |
| Maximum Conducted Output Power to Antenna | GSM 850 Voice : 32.30dBm PCS 1900 Voice : 28.65dBm WCDMA Band V (Class 3): 23.39dBm WCDMA Band II (Class 3): 23.43dBm WCDMA Band IV (Class 3): 24.18dBm |
| Highest Reported SAR Level(s) | 0.53W/Kg 1g Head Tissue 1.16W/Kg 1g Body Tissue |
| Classification Per Stipulated Test Standard | Portable Device, Class B, No DTM Mode |
| Multi-SIM | N/A |
| Co-located TX | WWAN can transmit simultaneously with Bluetooth WIFI cannot transmit simultaneously with Bluetooth WWAN can transmit simultaneously with WiFi |
| Antenna Separation distances | 11.3cm - WWAN antenna-to-WIFI/Bluetooth antenna |
| Antenna Type(s) | PIFA Antenna(WWAN) |
| Accessory | Earphone |

SAR Test Result

| Equipment Class | Frequency Band | | Highest 1g SAR Summary | | | Highest Simultaneous Transmission 1g SAR(W/kg) |
|------------------|----------------|----------|-------------------------|-----------------------------|---------------------------|--|
| | | | Head (Separation 0mm) | Body-worn (Separation 10mm) | Hotspot (Separation 10mm) | |
| | | | 1g SAR(W/kg) | | | |
| Licensed | GSM | GSM850 | 0.40 | 0.67 | 0.67 | 1.45 |
| | | GSM1900 | 0.17 | 0.66 | 0.66 | |
| | WCDMA | WCDMA V | 0.33 | 0.50 | 0.50 | |
| | | WCDMA II | 0.31 | 1.16 | 1.16 | |
| | | WCDMA IV | 0.53 | 1.15 | 1.15 | |
| Date of Testing: | | | July 8 to July 13, 2016 | | | |

2 TECHNICAL DETAILS

| | |
|---------------------------------|---|
| Purpose | Compliance testing of Mobile Phone model s5007 with stipulated standard |
| Applicant / Client | Verykool USA Inc 3636 Nobel Drive, Suite 325, San Diego, California 92122 United States |
| Manufacturer | Shenzhen Fortuneship Technology Co., Ltd 6/F, Kanghesheng Building, No.1 Chuangsheng Road, Nanshan District, Shenzhen, Guangdong, China |
| Laboratory performing the tests | SIEMIC(Shenzhen-China) Laboratories Zone A, Floor 1, Building 2, Wan Ye Long Technology Park, South Side of Zhoushi Road, Bao'an District, Shenzhen 518108, Guangdong, P.R.C. Tel: +(86) 0755-26014629 VIP Line:950-4038-0435 |
| Test report reference number | 16070803-FCC-H |
| Date EUT received | July 7th, 2016 |
| Standard applied | See Page 45 |
| Dates of test (from – to) | July 8th, 2016~ July 13th, 2016 |
| No of Units: | 1 |
| Equipment Category: | PCE |
| Trade | verykool |
| Model Name: | s5007 |
| RF Operating Frequency (ies) | GSM850 TX: 824.2 ~ 848.8 MHz; RX: 869.2 ~ 893.8 MHz PCS1900 TX: 1850.2 ~ 1909.8 MHz; RX: 1930.2 ~ 1989.8 MHz UMTS-FDD Band V TX: 826.4 ~ 846.6 MHz; RX: 871.4 ~ 891.6 MHz UMTS-FDD Band IV TX:1712.4 ~ 1752.6 MHz; RX : 2112.4 ~ 2152.6 MHz UMTS-FDD Band II TX:1852.4 ~ 1907.6 MHz; RX: 1932.4 ~ 1987.6 MHz WIFI: 802.11b/g/n(20M): 2412-2462 MHz Bluetooth: 2402-2480 MHz |
| Modulation: | GSM / GPRS: GMSK EGPRS: GMSK UMTS-FDD: QPSK 802.11b/g/n: DSSS, OFDM Bluetooth: GFSK, π /4DQPSK, 8DPSK |
| GPRS/EGPRS Multi-slot class | 8/10/12 |
| FCC ID | WA6S5007 |

3 INTRODUCTION

Introduction

This measurement report shows compliance of the EUT with ANSI/IEEE C95.1-1999 and FCC 47 CFR Part2 (2.1093)

The test procedures, as described in IEEE 1528-2013 Standard for IEEE Recommended Practice for Determining the Peak Spatial-Average Specific Absorption Rate (SAR) in the Human Head from Wireless Communications Devices: Measurement Techniques(300MHz~6GHz) and Published RF Exposure KDB Procedures

SAR Definition

Specific Absorption Rate is defined as the time derivative (rate) of the incremental energy (dW) absorbed by (dissipated in) an incremental mass (dm) contained in a volume element (dV) of a given density (ρ).

$$SAR = \frac{d}{dt} \left(\frac{dW}{dm} \right) = \frac{d}{dt} \left(\frac{dW}{\rho dV} \right)$$

SAR is expressed in units of watts per kilogram (W/kg). SAR can be related to the electric field at a point by

$$SAR = \frac{\sigma |E|^2}{\rho}$$

where:

- σ = conductivity of the tissue (S/m)
- ρ = mass density of the tissue (kg/m³)
- E = rms electric field strength (V/m)

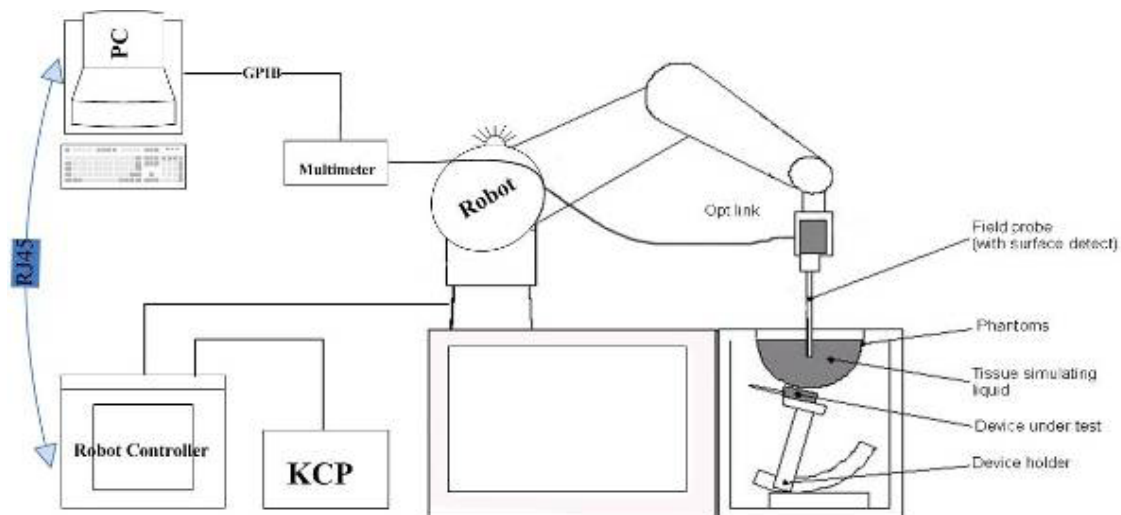
4 SAR MEASUREMENT SETUP

Dosimetric Assessment System

These measurements were performed with the automated near-field scanning system OPENSAR from SATIMO. The system is based on a high precision robot (working range: 850 mm), which positions the probes with a positional repeatability of better than ± 0.02 mm. Special E- and H-field probes have been developed for measurements close to material discontinuity, the sensors of which are directly loaded with a Schottky diode and connected via highly resistive lines to the data acquisition unit.

The SAR measurements were conducted with dosimetric probe (manufactured by SATIMO), designed in the classical triangular configuration and optimized for dosimetric evaluation. The probe has been calibrated according to the procedure described in SAR standard with accuracy of better than $\pm 10\%$. The spherical isotropy was evaluated with the procedure described in SAR standard and found to be better than ± 0.25 dB. The phantom used was the SAM Phantom as described in FCC supplement C, IEEE P1528 and CENELEC EN62209-1.

Measurement System Diagram



The OPENSAR system for performing compliance tests consist of the following items:

1. A standard high precision 6-axis robot (KUKA) with controller and software.
2. KUKA Control Panel (KCP).
3. A dosimetric probe, i.e., an isotropic E-field probe optimized and calibrated for usage in tissue simulating liquid. The probe is equipped with an optical surface detector system.
4. The functions of the PC plug-in card are to perform the time critical task such as signal filtering, surveillance of the robot operation fast movement interrupts.

| | |
|-------------|----------------|
| Test Report | 16070803-FCC-H |
| Page | 9 of 105 |

5. A computer operating Windows XP.
6. OPENSAR software.
7. Remote control with teaches pendant and additional circuitry for robot safety such as warning lamps, etc.
8. The SAM phantom enabling testing left-hand right-hand and body usage.
9. The Position device for handheld EUT.
10. Tissue simulating liquid mixed according to the given recipes (see Application Note).
11. System validation dipoles to validate the proper functioning of the system.

EP100 Probe



Construction Symmetrical design with triangular Core. Built-in shielding against static charges Calibration in air from 100 MHz to 2.5 GHz. In brain and muscle simulating tissue at frequencies from 800 to 6000 MHz (accuracy of 8%) .

Frequency 100 MHz to 6 GHz;

Linearity ; 0.25 dB (100 MHz to 6 GHz) ,

Directivity : 0.25 dB in brain tissue (rotation around probe axis) 0.5 dB in brain tissue (rotation normal probe axis)

Dynamic : 0.001W/kg to > 100W/kg;

Range Linearity: 0.25 dB

Surface : 0.2 mm repeatability in air and liquids

Dimensions Overall length: 330 mm

Tip length: 16 mm

Body diameter: 8 mm

Tip diameter: 2.6 mm

Distance from probe tip to dipole centers: <1.5 mm

Application General dosimetric up to 6 GHz

Compliance tests of GSM Phones

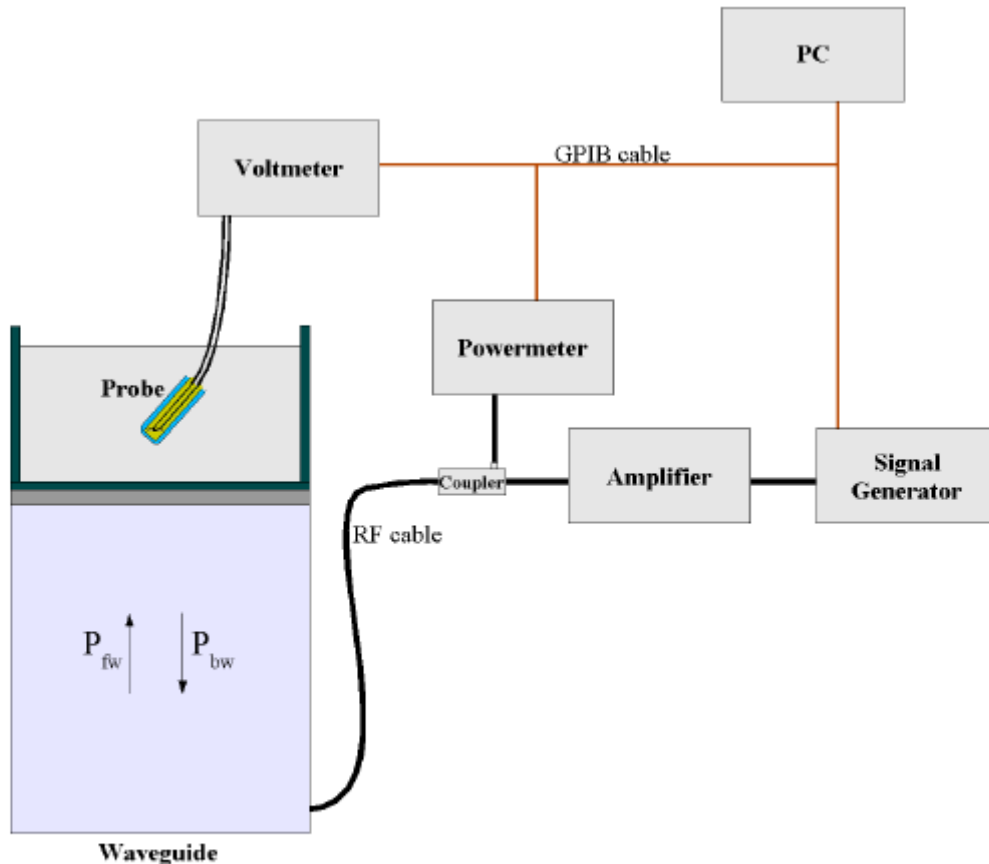
Fast automatic scanning in arbitrary phantoms

The SAR measurements were conducted with the dosimetric probe designed in the classical triangular configuration and optimized for dosimetric evaluation. The probe is constructed using the thick film technique, with printed resistive lines on ceramic substrates.

It is connected to the KRC box on the robot arm and provides an automatic detection of the phantom surface. The 3D file of the phantom is include in OpenSAR software. The Video Positioning System allow the system to take the automatic reference and to move the probe safely and accurately on the phantom.

E-Field Probe Calibration Process

Probe calibration is realized, in compliance with CENELEC EN50361; CEI/IEC 62209 and IEEE 1528 std, with CALISAR, SATIMO proprietary calibration system. The calibration is performed with the technique using reference waveguide.



$$SAR = \frac{4(P_{fw} - P_{bw})}{ab\delta} \cos^2\left(\pi \frac{y}{a}\right) e^{-(2z/\delta)}$$

Where :

- P_{fw} = Forward Power
- P_{bw} = Backward Power
- a and b = Waveguide dimensions
- δ = Skin depth

Keithley configuration:

Rate = Medium; Filter =ON; RDGS=10; FILTER TYPE =MOVING AVERAGE; RANGE AUTO

After each calibration, a SAR measurement is performed on a validation dipole and compared with a NPL calibrated probe, to verify it.

Each probe is calibrated according to a dosimetric assessment procedure described in SAR standard with accuracy better than +/- 10%. The spherical isotropy was evaluated with the procedure described in SAR standard and found to be better than +/-0.25dB. The sensitivity parameters (NormX, NormY, NormZ), the diode compression parameter (DCP) and the conversion factor (ConvF) of the probe are tested.

The free space E-field from probe outputs is determined in a test chamber. This is performed in a TEM cell for frequencies below 0.8 GHz, and in a waveguide above 0.8 GHz for free space. For the free space calibration, the probe is placed in the volumetric center of the cavity and at the proper orientation with the field. E-field correlation calibration is performed in a flat phantom filled with the appropriate simulated brain tissue.

SAM Phantom

The SAM Phantom SAM29 is constructed of a fiberglass shell integrated in a wooden table. The shape of the shell is in compliance with the specification set in IEEE 1528 and CENELEC EN62209-1, IEC62209-2.

The phantom enables the dosimetric evaluation of left and right hand phone usage as well as body mounted usage at the flat phantom region.

A cover prevents the evaporation of the liquid.

Reference markings on the Phantom allow the complete setup of all predefined phantom positions and measurement grids by manually teaching three points in the robot.

Shell Thickness: 2 0.2 mm

Filling Volume: Approx. 25 liters

Dimensions (H x L x W): 810 x 1000 x 500 mm

Liquid is filled to at least 15mm from the bottom of Phantom.



Device Holder

In combination with the Generic Twin Phantom V3.0, the Mounting Device enables the rotation of the mounted transmitter in spherical coordinates whereby the rotation points is the ear opening. The devices can be easily, accurately, and repeatedly positioned according to the FCC and CENELEC specifications. The device holder can be locked at different phantom locations (left head, right head, flat phantom).



Note: A simulating human hand is not used due to the complex anatomical and geometrical structure of the hand that may produced infinite number of configurations [10]. To produce the worst-case condition (the hand absorbs antenna output power), the hand is omitted during the tests.

Data Evaluation

The OPENSAR software automatically executes the following procedure to calculate the field units from the microvolt readings at the probe connector. The parameters used in the valuation are stored in the configuration modules of the software:

| | | |
|------------------|--------------------------------|-------------------|
| Probe Parameters | - Sensitivity | Norm _i |
| | - Conversion factor | ConvFi |
| | - Diode compression point Dcpi | |
| Device Parameter | - Frequency | f |
| | - Crest factor | cf |
| Media Parametrs | - Conductivity | σ |
| | - Density | ρ |

These parameters must be set correctly in the software. They can either be found in the component documents or be imported into the software from the configuration files issued for the OPENSAR components.

The first step of the evaluation is a linearization of the filtered input signal to account for the compression characteristics of the detector diode. The compensation depends on the input signal, the diode type and the DC-transmission factor from the diode to the evaluation electronics. If the exciting field is pulsed, the crest factor of the signal must be known to correctly compensate for peak power. The formula for each channel can be given as

$$V_i = U_i + U_i^2 \cdot \frac{cf}{dcp_i}$$

Where V_i = Compensated signal of channel i ($i = x, y, z$)

U_i = Input signal of channel i ($i = x, y, z$)

cf = Crest factor of exciting field (DASY parameter)

dcp_i = Diode compression point (DASY parameter)

From the compensated input signals the primary field data for each channel can be evaluated:

$$E\text{-field probes: } E_i = \sqrt{\frac{V_i}{\text{Norm}_i \cdot \text{ConvF}}}$$

$$H\text{-field probes: } H_i = \sqrt{V_i} \cdot \frac{a_{i0} + a_{i1}f + a_{i2}f^2}{f}$$

Where V_i = Compensated signal of channel i ($i = x, y, z$)
 Norm_i = Sensor sensitivity of channel i ($i = x, y, z$)
 $\mu\text{V}/(\text{V/m})^2$ for E field Probes
 ConvF = Sensitivity enhancement in solution
 a_{ij} = Sensor sensitivity factors for H -field probes

f = Carrier frequency (GHz)
 E_i = Electric field strength of channel i in V/m
 H_i = Magnetic field strength of channel i in A/m

The RSS value of the field components gives the total field strength (Hermitian magnitude):

$$E_{\text{tot}} = \sqrt{E_x^2 + E_y^2 + E_z^2}$$

The primary field data are used to calculate the derived field units.

$$SAR = E_{\text{tot}}^2 \cdot \frac{\sigma}{\rho \cdot 1000}$$

where SAR = local specific absorption rate in mW/g
 E_{tot} = total field strength in V/m
 σ = conductivity in $[\text{mho/m}]$ or $[\text{siemens/m}]$
 ρ = equivalent tissue density in g/cm^3

Note that the density is normally set to 1 (or 1.06), to account for actual brain density rather than the density of the simulation liquid.

The power flow density is calculated assuming the excitation field as a free space field.

$$P_{\text{pwe}} = \frac{E_{\text{tot}}^2}{3770} \quad \text{or} \quad P_{\text{pwe}} = H_{\text{tot}}^2 \cdot 37.7$$

where P_{pwe} = Equivalent power density of a plane wave in mW/cm^2
 E_{tot} = total electric field strength in V/m
 H_{tot} = total magnetic field strength in A/m

SAR Evaluation – Peak Spatial - Average

The procedure for assessing the peak spatial-average SAR value consists of the following steps

- **Power Reference Measurement**

The reference and drift jobs are useful jobs for monitoring the power drift of the device under test in the batch process. Both jobs measure the field at a specified reference position, at a selectable distance from the phantom surface. The reference position can be either the selected section's grid reference point or a user point in this section. The reference job projects the selected point onto the phantom surface, orients the probe perpendicularly to the surface, and approaches the surface using the selected detection method.

- **Area Scan**

The area scan is used as a fast scan in two dimensions to find the area of high field values, before doing a finer measurement around the hot spot. The sophisticated interpolation routines implemented in OPENSAR software can find the maximum locations even in relatively coarse grids. The scan area is defined by an editable grid. This grid is anchored at the grid reference point of the selected section in the phantom. When the area scan's property sheet is brought-up, grid was at to 15 mm by 15 mm and can be edited by a user.

- **Zoom Scan**

Zoom scans are used to assess the peak spatial SAR values within a cubic averaging volume containing 1 g and 10 g of simulated tissue. The default zoom scan measures 5 x 5 x 7 points within a cube whose base faces are centered around the maximum found in a preceding area scan job within the same procedure. If the preceding Area Scan job indicates more than one maximum, the number of Zoom Scans has to be enlarged accordingly (The default number inserted is 1).

- **Power Drift measurement**

The drift job measures the field at the same location as the most recent reference job within the same procedure, and with the same settings. The drift measurement gives the field difference in dB from the reading conducted within the last reference measurement. Several drift measurements are possible for one reference measurement. This allows a user to monitor the power drift of the device under test within a batch process. In the properties of the Drift job, the user can specify a limit for the drift and have OPENSAR software stop the measurements if this limit is exceeded.

SAR Evaluation – Peak SAR

The procedure for spatial peak SAR evaluation has been implemented according to the IEEE1529 standard. It can be conducted for 1 g and 10 g. The OPENSAR system allows evaluations that combine measured data and robot positions, such as:

- maximum search
- extrapolation
- boundary correction
- peak search for averaged SAR

During a maximum search, global and local maximum searches are automatically performed in 2-D after each Area Scan measurement with at least 6 measurement points. It is based on the evaluation of the local SAR gradient calculated by the Quadratic Shepard's method. The algorithm will find the global maximum and all local maxima within -2 dB of the global maxima for all SAR distributions.

Extrapolation

Extrapolation routines are used to obtain SAR values between the lowest measurement points and the inner phantom surface. The extrapolation distance is determined by the surface detection distance and the probe sensor offset. Several measurements at different distances are necessary for the extrapolation.

They are used in the Cube Scan to obtain SAR values between the lowest measurement points and the inner phantom surface. The routine uses the fourth order least square polynomial method for extrapolation. For a grid using 5x5x7 measurement points with 5mm resolution amounting to 343 measurement points, the uncertainty of the extrapolation routines is less than 1% for 1 g and 10 g cubes.

Definition of Reference Points

Ear Reference Point

Figure 6.2 shows the front, back and side views of the SAM Phantom. The point "M" is the reference point for the center of the mouth, "LE" is the left ear reference point (ERP), and "RE" is the right ERP. The ERPs are 15mm posterior to the entrance to the ear canal (EEC) along the B-M line (Back-Mouth), as shown in Figure 6.1. The plane passing through the two ear canals and M is defined as the Reference Plane. The line N-F (Neck-Front) is perpendicular to the reference plane and passing through the RE (or LE) is called the Reference Pivoting Line (see Figure 6.1). Line B-M is perpendicular to the N-F line. Both N-F and B-M lines are marked on the external phantom shell to facilitate handset positioning [5].

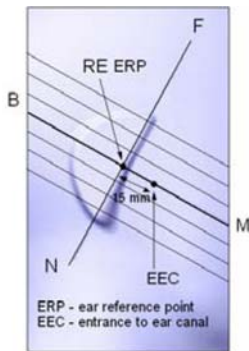


Figure 6.1 Close-up side view of ERP's



Figure 6.2 Front, back and side view of SAM

Device Reference Points

Two imaginary lines on the device need to be established: the vertical centerline and the horizontal line. The test device is placed in a normal operating position with the "test device reference point" located along the "vertical centerline" on the front of the device aligned to the "ear reference point" (See Fig. 6.3). The "test device reference point" is then located at the same level as the center of the ear reference point. The test device is positioned so that the "vertical centerline" is bisecting the front surface of the device at its top and bottom edges, positioning the "ear reference point" on the outer surface of both the left and right head phantoms on the ear reference point [5].

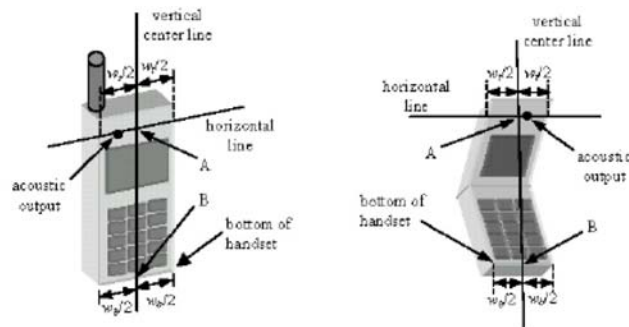


Figure 6.3 Handset Vertical Center & Horizontal Line Reference Points

Test Configuration – Positioning for Cheek / Touch

1. Position the device close to the surface of the phantom such that point A is on the (virtual) extension of the line passing through points RE and LE on the phantom (see Figure below), such that the plane defined by the vertical center line and the horizontal line of the device is approximately parallel to the sagittal plane of the phantom

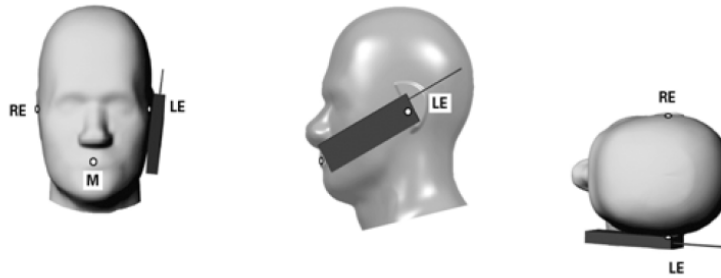


Figure 7.1 Front, Side and Top View of Cheek/Touch Position

2. Translate the device towards the phantom along the line passing through RE and LE until the device touches the ear.
3. While maintaining the device in this plane, rotate it around the LE-RE line until the vertical centerline is in the plane normal to MB-NF including the line MB (called the reference plane).
4. Rotate the device around the vertical centerline until the device (horizontal line) is symmetrical with respect to the line NF.
5. While maintaining the vertical centerline in the reference plane, keeping point A on the line passing through RE and LE and maintaining the device contact with the ear, rotate the device about the line NF until any point on the device is in contact with a phantom point below the ear (cheek). See Figure below.

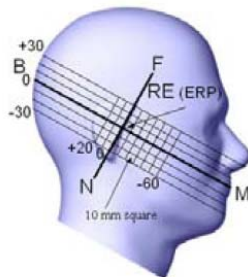


Figure 7.2 Side view w/ relevant markings

Test Configuration – Positioning for Ear / 15° Tilt

With the test device aligned in the Cheek/Touch Position”:

1. While maintaining the orientation of the device, retracted the device parallel to the reference plane far enough to enable a rotation of the device by 15 degrees.
2. Rotate the device around the horizontal line by 15 degrees.
3. While maintaining the orientation of the device, move the device parallel to the reference plane until any part of the device touches the head. (In this position, point A is located on the line RE-LE). The tilted position is obtained when the contact is on the pinna. If the contact is at any location other than the pinna, the angle of the device shall be reduced. The tilted position is obtained when any part of the device is in contact with the ear as well as a second part of the device is in contact with the head (see Figure below).

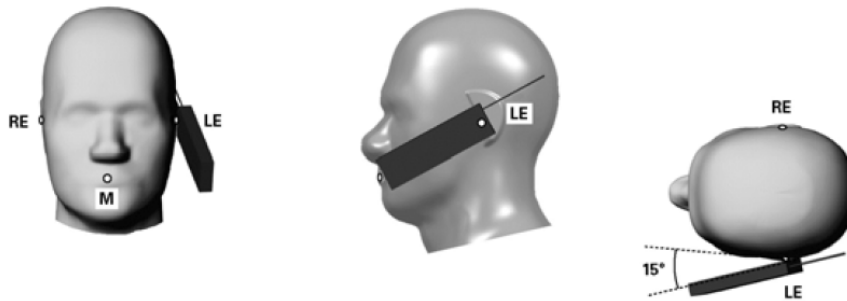
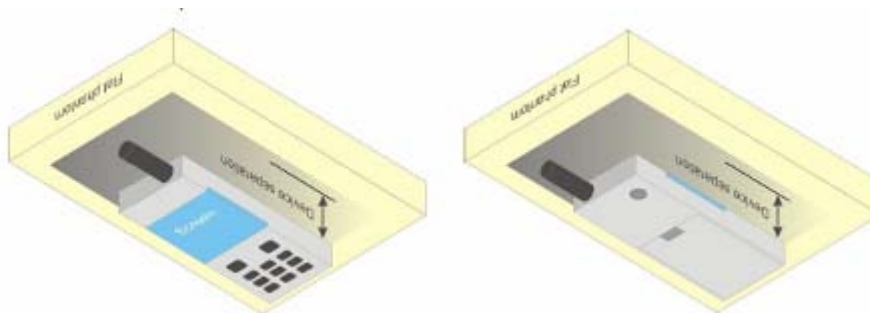


Figure 7.3 Front, Side and Top View of Ear/15° Tilt Position

Test Position – Body Worn Configurations

Body Worn Position

- (a) To position the device parallel to the phantom surface with either keypad up or down.
- (b) To adjust the device parallel to the flat phantom.
- (c) To adjust the distance between the device surface and the flat phantom to 1.5 cm or holster surface and the flat phantom to 0 cm.



5 ANSI/IEEE C95.1 – 1999 RF EXPOSURE LIMIT

In order for users to be aware of the body-worn operating requirements for meeting RF exposure compliance, operating instructions and cautions statements are included in the user's manual.

Uncontrolled Environment

Uncontrolled Environments are defined as locations where there is the exposure of individuals who have no knowledge or control of their exposure. The general population/uncontrolled exposure limits are applicable to situations in which the general public may be exposed or in which persons who are exposed as a consequence of their employment may not be made fully aware of the potential for exposure or cannot exercise control over their exposure. Members of the general public would come under this category when exposure is not employment-related; for example, in the case of a wireless transmitter that exposes persons in its vicinity.

Controlled Environment

Controlled Environments are defined as locations where there is exposure that may be incurred by persons who are aware of the potential for exposure, (i.e. as a result of employment or occupation). In general, occupational/controlled exposure limits are applicable to situations in which persons are exposed as a consequence of their employment, who have been made fully aware of the potential for exposure and can exercise control over their exposure. This exposure category is also applicable when the exposure is of a transient nature due to incidental passage through a location where the exposure levels may be higher than the general population/uncontrolled limits, but the exposed person is fully aware of the potential for exposure and can exercise control over his or her exposure by leaving the area or by some other appropriate means.

Table 8.1 Human Exposure Limits

| | UNCONTROLLED ENVIRONMENT General Population (W/kg) or (mW/g) | CONTROLLED ENVIROMENT Professional Population (W/kg) or (mW/g) |
|--|--|--|
| SPATIAL PEAK SAR ¹ Brain | 1.60 | 8.00 |
| SPATIAL AVERAGE SAR ² Whole Body | 0.08 | 0.40 |
| SPATIAL PEAK SAR ³ Hands, Feet, Ankles, Wrists | 4.00 | 20.00 |

¹ The Spatial Peak value of the SAR averaged over any 1 gram of tissue (defined as a tissue volume in the shape of a cube) and over the appropriate averaging time.

² The Spatial Average value of the SAR averaged over the whole body.

³ The Spatial Peak value of the SAR averaged over any 10 grams of tissue (defined as a tissue volume in the shape of a cube) and over the appropriate averaging time.

6 SYSTEM AND LIQUID VERIFICATION

Basic SAR system validation requirements

The SAR system must be validated against its performance specifications before it is deployed. When SAR probes, system components or software are changed, upgraded or recalibrated, these must be validated with the SAR system(s) that operates with such components. Reference dipoles are used with the required tissue-equivalent media for system validation,

The detailed system validation results are maintained by each test laboratory, which are normally not required for equipment approval. Only a tabulated summary of the system validation status, according to the validation date(s), measurement frequencies, SAR probes and tissue dielectric parameters is required in the SAR report.

System Setup

The system performance check verifies that the system operates within its specifications. System and operator errors can be detected and corrected. It is recommended that the system performance check be performed prior to any usage of the system in order to guarantee reproducible results. The system performance check uses normal SAR measurements in a simplified setup with a well characterized source. This setup was selected to give a high sensitivity to all parameters that might fail or vary over time. The system check does not intend to replace the calibration of the components, but indicates situations where the system uncertainty is exceeded due to drift or failure.

In the simplified setup for system evaluation, the DUT is replaced by a calibrated dipole and the power source is replaced by a continuous wave that comes from a signal generator. The calibrated dipole must be placed beneath the flat phantom section of the SAM twin phantom with the correct distance holder. The distance holder should touch the phantom surface with a light pressure at the reference marking and be oriented parallel to the long side of the phantom. The equipment setup is shown below:

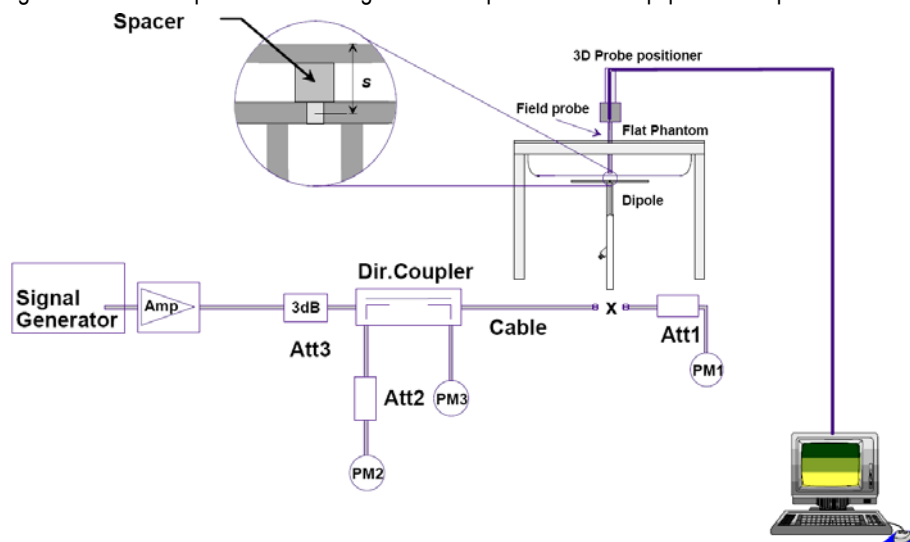


Fig 8.1 System Setup for System Evaluation

1. Signal Generator
2. Amplifier
3. Directional Coupler
4. Power Meter
5. Calibrated Dipole

Note: The output power on dipole port must be calibrated to 30 dBm (1000 mW) before dipole is connected.

System Verification Results

Prior to SAR assessment, the system is verified to 10% of the SAR measurement on the reference dipole at the time of calibration by the calibration facility. Full system validation status and result summary can be found in below.

Target and measurement SAR after Normalized (1W):

| Measurement Date | Frequency (MHz) | Liquid Type (head/body) | Target SAR1g (W/kg) | Measured SAR1g (W/kg) | Normalized SAR1g (W/kg) | Deviation (%) |
|------------------|-----------------|-------------------------|---------------------|-----------------------|-------------------------|---------------|
| July 8th,2016 | 835 | head | 9.65 | 0.0967 | 9.67 | 0.21 |
| July 8th,2016 | 835 | body | 9.98 | 0.0996 | 9.96 | -0.20 |
| July 11th,2016 | 1800 | head | 38.44 | 0.3847 | 38.47 | 0.08 |
| July 11th,2016 | 1800 | body | 39.59 | 0.3970 | 39.70 | 0.28 |
| July 13th,2016 | 1900 | head | 39.52 | 0.4052 | 40.52 | 2.53 |
| July 13th,2016 | 1900 | body | 42.88 | 0.4292 | 42.92 | 0.09 |

Note: system check input power: 10mW

Liquid Verification

The dielectric parameters were checked prior to assessment using the HP85070C dielectric probe kit. The dielectric parameters measured are reported in each correspondent section.

KDB 865664 recommended Tissue Dielectric Parameters

The head and body tissue parameters given in this below table should be used to measure the SAR of transmitters operating in 100 MHz to 6 GHz frequency range. The tissue dielectric parameters of the tissue medium at the test frequency should be within the tolerance required in this document. The dielectric parameters should be linearly interpolated between the closest pair of target frequencies to determine the applicable dielectric parameters corresponding to the device test frequency.

The head tissue dielectric parameters recommended by IEEE Std 1528-2013 have been incorporated in the following table. These head parameters are derived from planar layer models simulating the highest expected SAR for the dielectric properties and tissue thickness variations in a human head. Other head and body tissue parameters that have not been specified in 1528 are derived from tissue dielectric parameters computed from the 4-Cole-Cole equations described above and extrapolated according to the head parameters specified in 1528.

Liquid Confirmation Result:

1. Measured Head liquid Properties

| Date | Freq.(MHz) | Liquid Parameters | Measured | Target | Delta (%) | Limit ± (%) |
|----------------|------------|---|----------|--------|-----------|-------------|
| July 8th,2016 | 835 | Relative Permittivity (ϵ_r): | 41.8 | 41.5 | 0.72 | 5 |
| | | Conductivity (σ): | 0.87 | 0.90 | -3.33 | 5 |
| July 11th,2016 | 1800 | Relative Permittivity (ϵ_r): | 39.73 | 40.0 | -0.68 | 5 |
| | | Conductivity (σ): | 1.38 | 1.40 | -1.43 | 5 |
| July 13th,2016 | 1900 | Relative Permittivity (ϵ_r): | 40.6 | 40.0 | 1.50 | 5 |
| | | Conductivity (σ): | 1.36 | 1.40 | -2.86 | 5 |

2. Measured Body liquid Properties

| Date | Freq.(MHz) | Liquid Parameters | Measured | Target | Delta (%) | Limit ± (%) |
|----------------|------------|---|----------|--------|-----------|-------------|
| July 8th,2016 | 835 | Relative Permittivity (ϵ_r): | 55.16 | 55.20 | -0.07 | 5 |
| | | Conductivity (σ): | 0.96 | 0.97 | -1.03 | 5 |
| July 11th,2016 | 1800 | Relative Permittivity (ϵ_r): | 53.33 | 53.3 | 0.06 | 5 |
| | | Conductivity (σ): | 1.55 | 1.52 | 1.97 | 5 |
| July 13th,2016 | 1900 | Relative Permittivity (ϵ_r): | 53.28 | 53.3 | -0.04 | 5 |
| | | Conductivity (σ): | 1.56 | 1.52 | 2.63 | 5 |

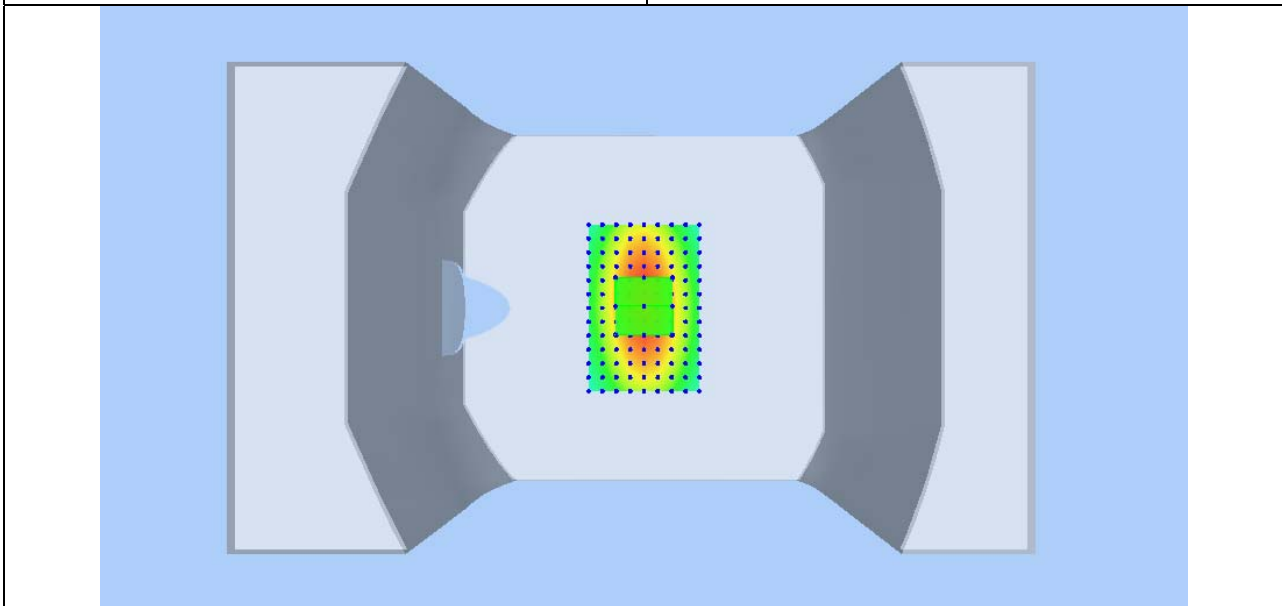
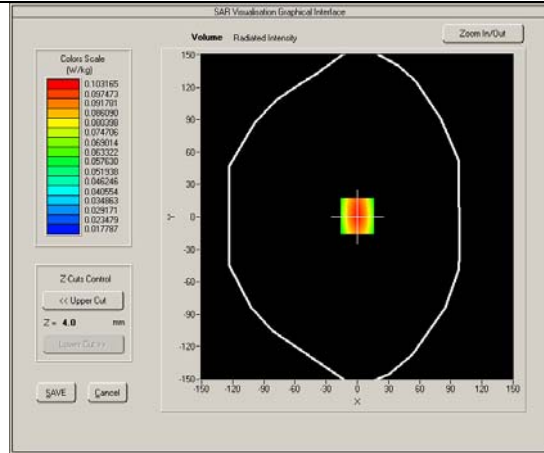
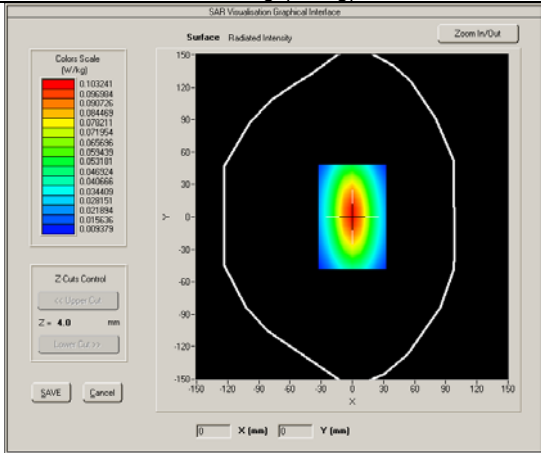
System Verification Plots

Product Description: Dipole

Model: SID835

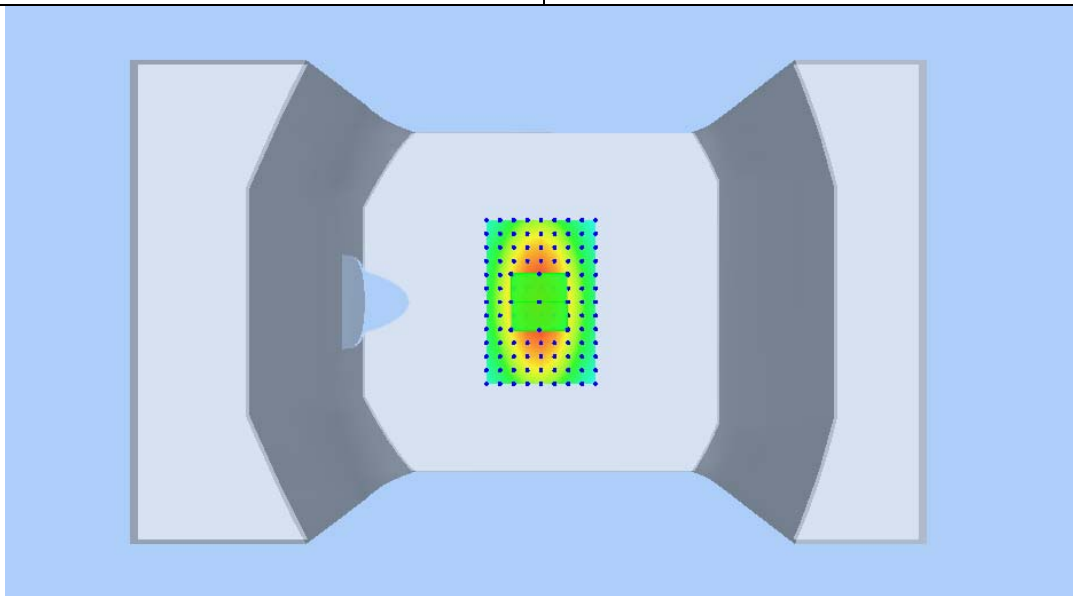
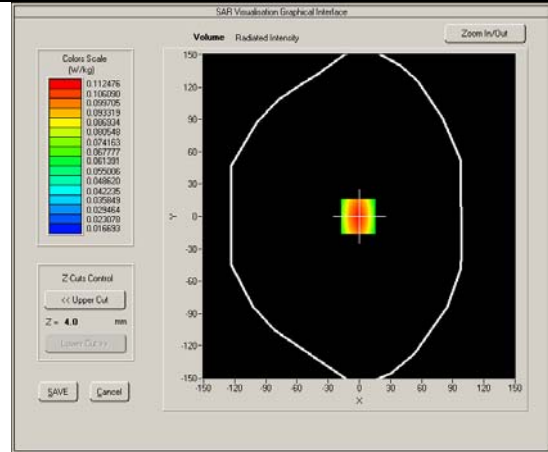
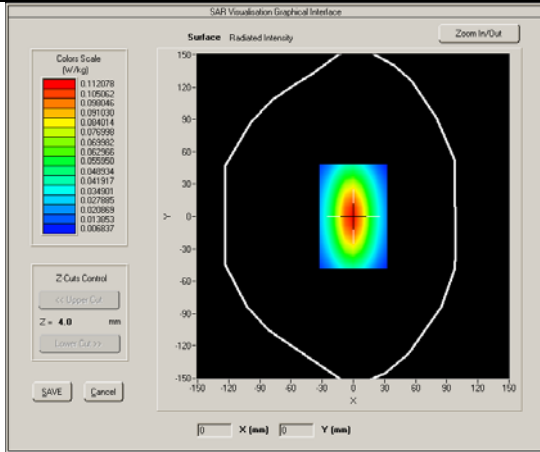
Test Date: July 8th, 2016

| | |
|-----------------------------------|-----------------------------|
| Medium (liquid type) | HSL_835 |
| Frequency (MHz) | 835.000000 |
| Relative permittivity (real part) | 41.8 |
| Conductivity (S/m) | 0.87 |
| Input power | 10mW |
| E-Field Probe | SN 27/15 EPGO262 |
| Crest factor | 1.0 |
| Conversion Factor | 1.90 |
| Sensor-surface | 4mm |
| Area Scan | dx=8mm dy=8mm |
| Zoom Scan | 5x5x7, dx=8mm dy=8mm dz=5mm |
| Variation (%) | 0.110000 |
| SAR 10g (W/Kg) | 0.074824 |
| SAR 1g (W/Kg) | 0.096733 |



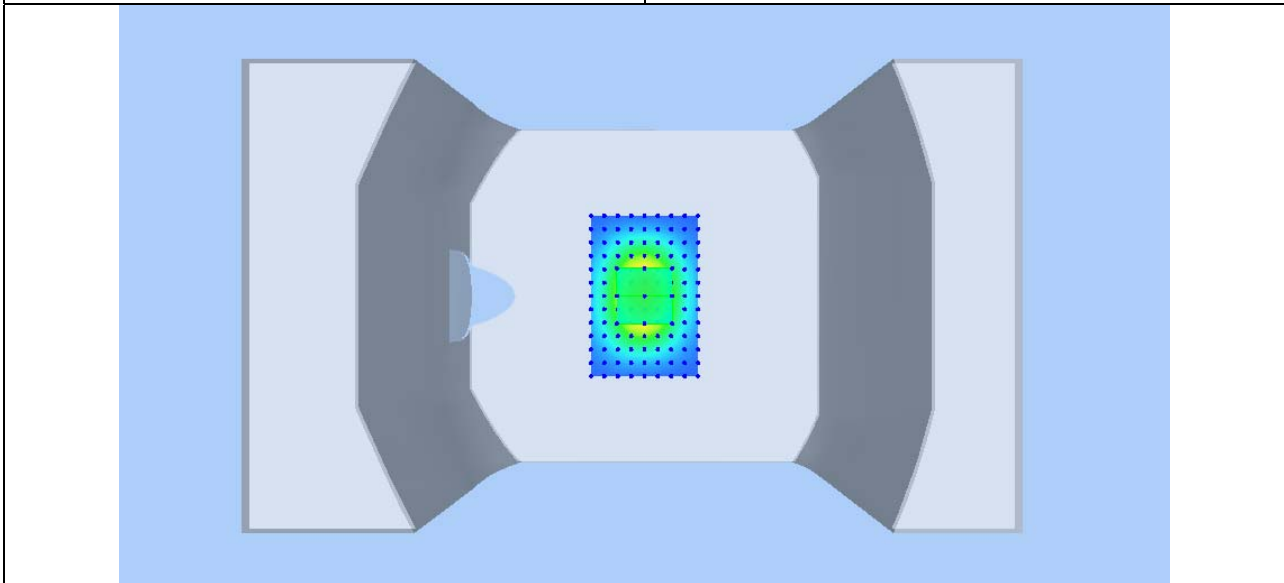
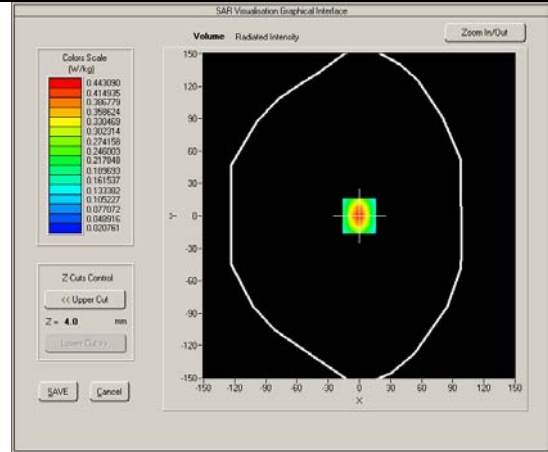
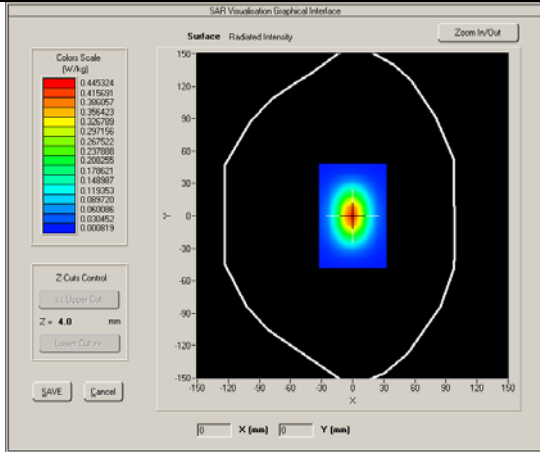
Product Description: Dipole
 Model: SID835
 Test Date: July 8th,2016

| | |
|-----------------------------------|----------------------------|
| Medium(liquid type) | MSL_835 |
| Frequency (MHz) | 835.000000 |
| Relative permittivity (real part) | 55.16 |
| Conductivity (S/m) | 0.96 |
| Input power | 10mW |
| E-Field Probe | SN 27/15 EPGO262 |
| Crest factor | 1.0 |
| Conversion Factor | 1.97 |
| Sensor-surface | 4mm |
| Area Scan | dx=8mm dy=8mm |
| Zoom Scan | 5x5x7,dx=8mm dy=8mm dz=5mm |
| Variation (%) | -0.25000 |
| SAR 10g (W/Kg) | 0.065642 |
| SAR 1g (W/Kg) | 0.099606 |



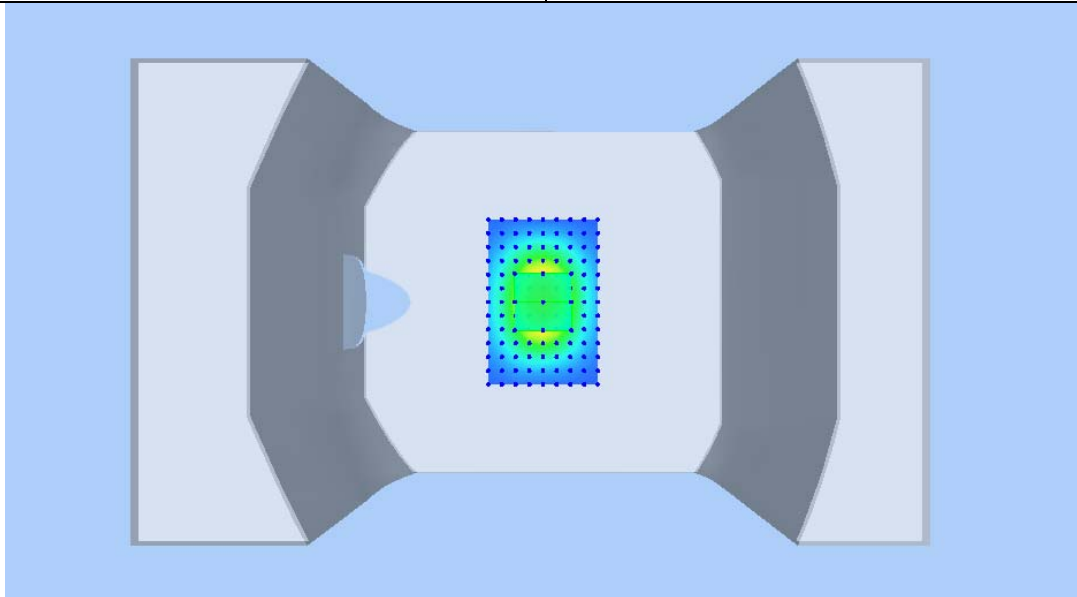
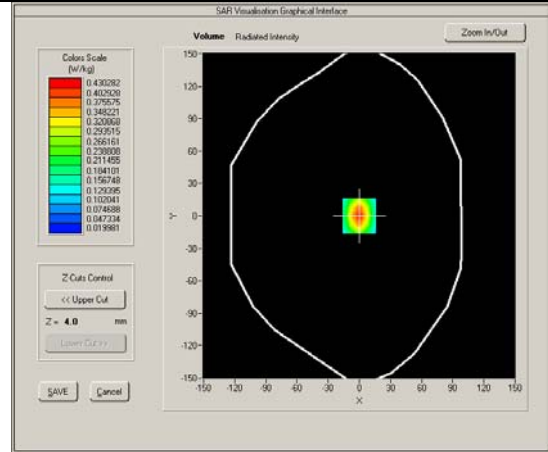
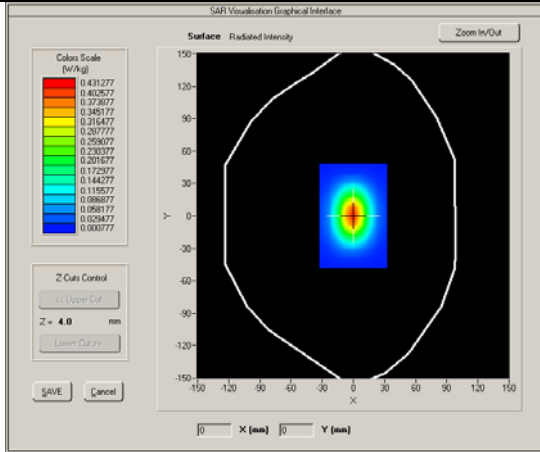
Product Description: Dipole
 Model: SID1900
 Test Date: July 13th,2016

| | |
|-----------------------------------|----------------------------|
| Medium(liquid type) | HSL_1900 |
| Frequency (MHz) | 1900.000 |
| Relative permittivity (real part) | 40.6 |
| Conductivity (S/m) | 1.36 |
| Input power | 10mW |
| E-Field Probe | SN 27/15 EPGO262 |
| Crest factor | 1.0 |
| Conversion Factor | 2.26 |
| Sensor-Surface | 4mm |
| Area Scan | dx=8mm dy=8mm |
| Zoom Scan | 5x5x7,dx=8mm dy=8mm dz=5mm |
| Variation (%) | 0.330000 |
| SAR 10g (W/Kg) | 0.166080 |
| SAR 1g (W/Kg) | 0.405275 |



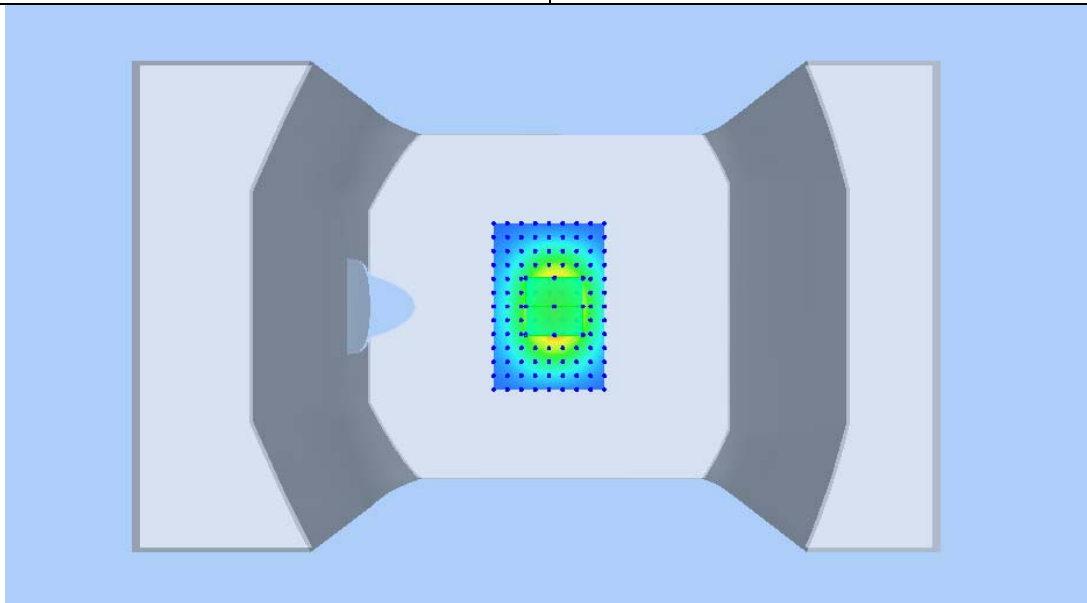
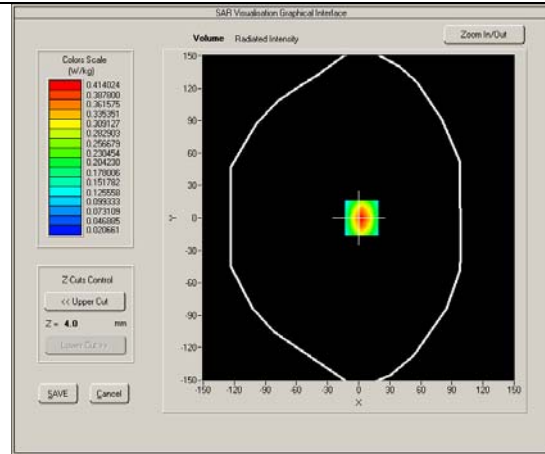
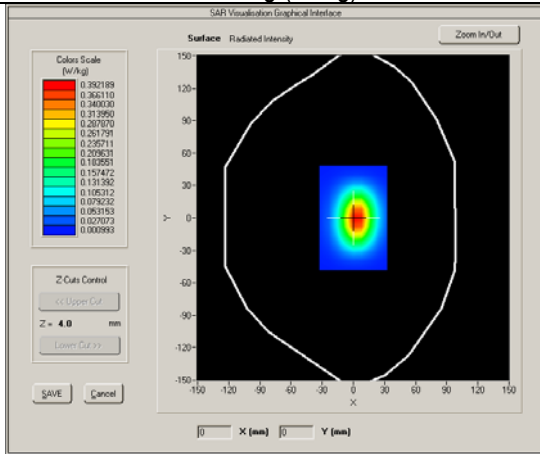
Product Description: Dipole
 Model: SID1900
 Test Date: July 13th,2016

| | |
|-----------------------------------|----------------------------|
| Medium(liquid type) | MSL_1900 |
| Frequency (MHz) | 1900.000 |
| Relative permittivity (real part) | 53.28 |
| Conductivity (S/m) | 1.56 |
| Input power | 10mW |
| E-Field Probe | SN 27/15 EPGO262 |
| Crest factor | 1.0 |
| Conversion Factor | 2.32 |
| Sensor-Surface | 4mm |
| Area Scan | dx=8mm dy=8mm |
| Zoom Scan | 5x5x7,dx=8mm dy=8mm dz=5mm |
| Variation (%) | -0.850000 |
| SAR 10g (W/Kg) | 0.202161 |
| SAR 1g (W/Kg) | 0.429273 |



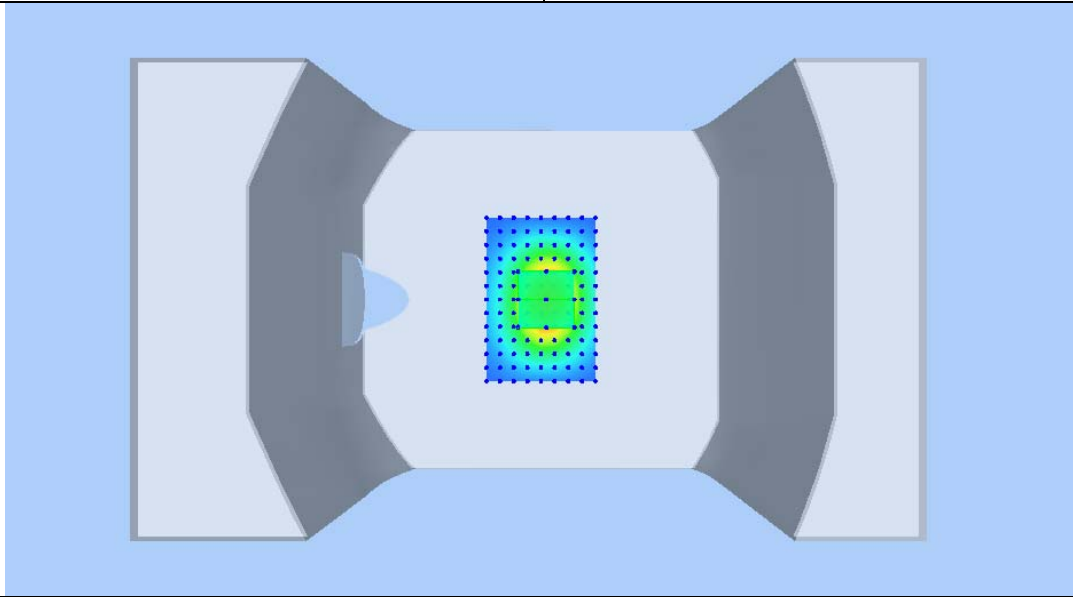
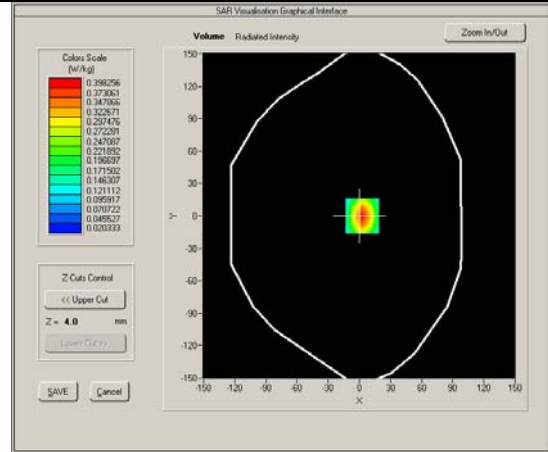
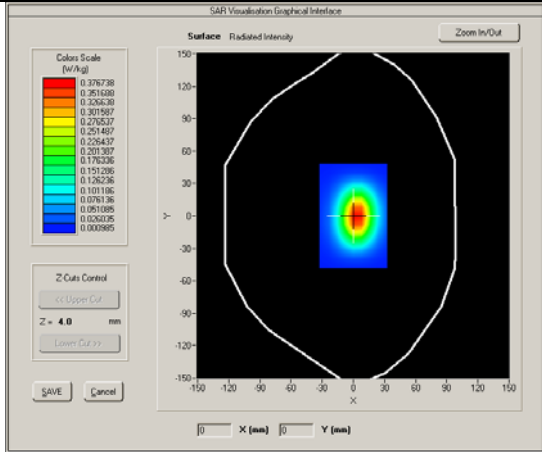
Product Description: Dipole
 Model: SID1800
 Test Date: July 11th, 2016

| | |
|-----------------------------------|----------------------------|
| Medium(liquid type) | HSL 1800 |
| Frequency (MHz) | 1800.000 |
| Relative permittivity (real part) | 39.73 |
| Conductivity (S/m) | 1.38 |
| Input power | 10mW |
| E-Field Probe | SN 27/15 EPGO262 |
| Crest factor | 1.0 |
| Conversion Factor | 2.01 |
| Sensor-Surface | 4mm |
| Area Scan | dx=8mm dy=8mm |
| Zoom Scan | 5x5x7,dx=8mm dy=8mm dz=5mm |
| Variation (%) | -0.53000 |
| SAR 10g (W/Kg) | 0.108852 |
| SAR 1g (W/Kg) | 0.384755 |



Product Description: Dipole
 Model: SID1800
 Test Date: July 11th,2016

| | |
|-----------------------------------|----------------------------|
| Medium(liquid type) | MSL_1800 |
| Frequency (MHz) | 1800.000 |
| Relative permittivity (real part) | 53.33 |
| Conductivity (S/m) | 1.55 |
| Input power | 10mW |
| E-Field Probe | SN 27/15 EPGO262 |
| Crest factor | 1.0 |
| Conversion Factor | 2.05 |
| Sensor-Surface | 4mm |
| Area Scan | dx=8mm dy=8mm |
| Zoom Scan | 5x5x7,dx=8mm dy=8mm dz=5mm |
| Variation (%) | -0.26000 |
| SAR 10g (W/Kg) | 0.182653 |
| SAR 1g (W/Kg) | 0.397003 |



7 UNCERTAINTY ASSESSMENT

The component of uncertainty may generally be categorized according to the methods used to evaluate them. The evaluation of uncertainty by the statistical analysis of a series of observations is termed a Type A evaluation of uncertainty. The evaluation of uncertainty by means other than the statistical analysis of a series of observation is termed a Type B evaluation of uncertainty. Each component of uncertainty, however evaluated, is represented by an estimated standard deviation, termed standard uncertainty, which is determined by the positive square root of the estimated variance

A Type A evaluation of standard uncertainty may be based on any valid statistical method for treating data. This includes calculating the standard deviation of the mean of a series of independent observations; using the method of least squares to fit a curve to the data in order to estimate the parameter of the curve and their standard deviations; or carrying out an analysis of variance in order to identify and quantify random effects in certain kinds of measurement.

A type B evaluation of standard uncertainty is typically based on scientific judgment using all of the relevant information available. These may include previous measurement data, experience and specification, data provided in calibration reports and uncertainties assigned to reference data taken from handbooks. Broadly speaking, the uncertainty is either obtained from an outdoor source or obtained from an assumed distribution, such as the normal distribution, rectangular or triangular distributions indicated in Table below :

| Uncertainty Distribution | Normal | Rectangle | Triangular | U Shape |
|------------------------------------|--------------------|----------------|----------------|----------------|
| Multi-plying Factor ^(a) | 1/k ^(b) | 1 / $\sqrt{3}$ | 1 / $\sqrt{6}$ | 1 / $\sqrt{2}$ |

(a) standard uncertainty is determined as the product of the multiplying factor and the estimated range of variations in the measured quantity

(b) κ is the coverage factor

Standard Uncertainty for Assumed Distribution

The combined standard uncertainty of the measurement result represents the estimated standard deviation of the result. It is obtained by combining the individual standard uncertainties of both Type A and Type -sum-by taking the positive square root of the estimated variances.

Expanded uncertainty is a measure of uncertainty that defines an interval about the measurement result within which the measured value is confidently believed to lie. It is obtained by multiplying the combined standard uncertainty by a coverage factor. Typically, the coverage factor ranges from 2 to 3. Using a coverage factor allows the true value of a measured quantity to be specified with a defined probability within the specified uncertainty range. For purpose of this document, a coverage factor two is used, which corresponds to confidence interval of about 95 %.

The COMOSAR Uncertainty Budget is show in below table:

The following table includes the uncertainty table of the IEEE 1528 from 300MHz to 3GHz and KDB865664 to 6GHZ too, The values are determined by Satimo.

UNCERTAINTY FOR SYSTEM PERFORMANCE CHECK

| Uncertainty Component | Tol. (± %) | Prob. Dist. | Div. | c _i (1 g) | c _i (10 g) | 1 g u _i (± %) | 10 g u _i (± %) | V _i |
|---|---------------|----------------|------|-------------------------|--------------------------|--------------------------------|---------------------------------|----------------|
| Measurement System | | | | | | | | |
| Probe Calibration | 5,8 | N | 1 | 1 | 1 | 5,8 | 5,8 | ∞ |
| Axial Isotropy | 3,5 | R | √3 | (1-cp) ^{1/2} | (1-cp) ^{1/2} | 1,42887 | 1,42887 | ∞ |
| Hemispherical Isotropy | 5,9 | R | √3 | √Cp | √Cp | 2,40866 | 2,40866 | ∞ |
| Boundary Effect | 1 | R | √3 | 1 | 1 | 0,57735 | 0,57735 | ∞ |
| Linearity | 4,7 | R | √3 | 1 | 1 | 2,71355 | 2,71355 | ∞ |
| System Detection Limits | 1 | R | √3 | 1 | 1 | 0,57735 | 0,57735 | ∞ |
| Readout Electronics | 0,5 | N | 1 | 1 | 1 | 0,5 | 0,5 | ∞ |
| Response Time | 0 | R | √3 | 1 | 1 | 0 | 0 | ∞ |
| Integration Time | 1,4 | R | √3 | 1 | 1 | 0,80829 | 0,80829 | ∞ |
| RF Ambient Conditions | 3 | R | √3 | 1 | 1 | 1,73205 | 1,73205 | ∞ |
| Probe Positioner Mechanical Tolerance | 1,4 | R | √3 | 1 | 1 | 0,80829 | 0,80829 | ∞ |
| Probe Positioning with respect to Phantom Shell | 1,4 | R | √3 | 1 | 1 | 0,80829 | 0,80829 | ∞ |
| Extrapolation, interpolation and Integration Algorithms for Max. SAR Evaluation | 2,3 | R | √3 | 1 | 1 | 1,32791 | 1,32791 | ∞ |
| Dipole | | | | | | | | |
| Dipole Axis to Liquid Distance | 2 | N | √3 | 1 | 1 | 1,1547 | 1,1547 | N-1 |
| Input Power and SAR drift measurement | 5 | R | √3 | 1 | 1 | 2,88675 | 2,88675 | ∞ |
| Phantom and Tissue Parameters | | | | | | | | |
| Phantom Uncertainty (shape and thickness tolerances) | 4 | R | √3 | 1 | 1 | 2,3094 | 2,3094 | ∞ |
| Liquid Conductivity - deviation from target values | 5 | R | √3 | 0,64 | 0,43 | 1,84752 | 1,2413 | ∞ |
| Liquid Conductivity - measurement uncertainty | 4 | N | 1 | 0,64 | 0,43 | 2,56 | 1,72 | M |
| Liquid Permittivity - deviation from target values | 5 | R | √3 | 0,6 | 0,49 | 1,73205 | 1,41451 | ∞ |
| Liquid Permittivity - measurement uncertainty | 5 | N | 1 | 0,6 | 0,49 | 3 | 2,45 | M |
| Combined Standard Uncertainty | | RSS | | | | 9,6671 | 9,1645 | |
| Expanded Uncertainty (95% CONFIDENCE INTERVAL) | | k | | | | 19,3342 | 18,3290 | |

UNCERTAINTY EVALUATION FOR HANDSET SAR TEST

| Uncertainty Component | Tol. (± %) | Prob. Dist. | Div. | c_i (1 g) | c_i (10 g) | 1 g u_i (± %) | 10 g u_i (± %) | v_i |
|---|---------------|----------------|------------|-----------------|-----------------|-----------------------|------------------------|-------|
| Measurement System | | | | | | | | |
| Probe Calibration | 5,8 | N | 1 | 1 | 1 | 5,8 | 5,8 | ∞ |
| Axial Isotropy | 3,5 | R | $\sqrt{3}$ | $(1-c_p)^{1/2}$ | $(1-c_p)^{1/2}$ | 1,43 | 1,43 | ∞ |
| Hemispherical Isotropy | 5,9 | R | $\sqrt{3}$ | $\sqrt{C_p}$ | $\sqrt{C_p}$ | 2,41 | 2,41 | ∞ |
| Boundary Effect | 1 | R | $\sqrt{3}$ | 1 | 1 | 0,58 | 0,58 | ∞ |
| Linearity | 4,7 | R | $\sqrt{3}$ | 1 | 1 | 2,71 | 2,71 | ∞ |
| System Detection Limits | 1 | R | $\sqrt{3}$ | 1 | 1 | 0,58 | 0,58 | ∞ |
| Readout Electronics | 0,5 | N | 1 | 1 | 1 | 0,50 | 0,50 | ∞ |
| Response Time | 0 | R | $\sqrt{3}$ | 1 | 1 | 0,00 | 0,00 | ∞ |
| Integration Time | 1,4 | R | $\sqrt{3}$ | 1 | 1 | 0,81 | 0,81 | ∞ |
| RF Ambient Conditions | 3 | R | $\sqrt{3}$ | 1 | 1 | 1,73 | 1,73 | ∞ |
| Probe Positioner Mechanical Tolerance | 1,4 | R | $\sqrt{3}$ | 1 | 1 | 0,81 | 0,81 | ∞ |
| Probe Positioning with respect to Phantom Shell | 1,4 | R | $\sqrt{3}$ | 1 | 1 | 0,81 | 0,81 | ∞ |
| Extrapolation, interpolation and Integration Algorithms for Max. SAR Evaluation | 2,3 | R | $\sqrt{3}$ | 1 | 1 | 1,33 | 1,33 | ∞ |
| Test sample Related | | | | | | | | |
| Test Sample Positioning | 2,6 | N | 1 | 1 | 1 | 2,60 | 2,60 | N-1 |
| Device Holder Uncertainty | 3 | N | 1 | 1 | 1 | 3,00 | 3,00 | N-1 |
| Output Power Variation - SAR drift measurement | 5 | R | $\sqrt{3}$ | 1 | 1 | 2,89 | 2,89 | ∞ |
| Phantom and Tissue Parameters | | | | | | | | |
| Phantom Uncertainty (shape and thickness tolerances) | 4 | R | $\sqrt{3}$ | 1 | 1 | 2,31 | 2,31 | ∞ |
| Liquid Conductivity - deviation from target values | 5 | R | $\sqrt{3}$ | 0,64 | 0,43 | 1,85 | 1,24 | ∞ |
| Liquid Conductivity - measurement uncertainty | 4 | N | 1 | 0,64 | 0,43 | 2,56 | 1,72 | M |
| Liquid Permittivity - deviation from target values | 5 | R | $\sqrt{3}$ | 0,6 | 0,49 | 1,73 | 1,41 | ∞ |
| Liquid Permittivity - measurement uncertainty | 5 | N | 1 | 0,6 | 0,49 | 3,00 | 2,45 | M |
| Combined Standard Uncertainty | | RSS | | | | 10,39 | 9,92 | |
| Expanded Uncertainty (95% CONFIDENCE INTERVAL) | | k | | | | 20,78 | 19,84 | |

8 TEST INSTRUMENT

TEST INSTRUMENTATION

| Name of Equipment | Manufacturer | Type/Model | Serial Number | Calibration Date | Calibration Due |
|--|--------------------------|-----------------|-------------------|------------------|-----------------|
| P C | Compaq | PV 3.06GHz | 375052-AA1 | N/A | N/A |
| Signal Generator | Agilent | 8665B-008 | 3744A10293 | 05/15/2016 | 05/15/2017 |
| MultiMeter | Keithley | MiltiMeter 2000 | 1259033 | 06/21/2016 | 06/21/2017 |
| S-Parameter Network Analyzer | Agilent | 8753ES | US39173518 | 08/04/2015 | 08/04/2016 |
| Wireless Communication Test Set | R & S | CMU200 | 111078 | 07/22/2016 | 07/22/2017 |
| Power Meter | HP | 437B | 3038A03648 | 05/17/2016 | 05/17/2017 |
| E-field PROBE | MVG | SSE2 | SN 27/15 EPGO262 | 07/09/2016 | 07/09/2017 |
| DIPOLE 835 | SATIMO | SID 835 | SN 18/11 DIPC 150 | 06/24/2016 | 06/24/2017 |
| DIPOLE 1800 | SATIMO | SID 1800 | SN 18/11 DIPF 152 | 07/09/2016 | 07/09/2017 |
| DIPOLE 1900 | SATIMO | SID 1900 | SN 18/11 DIPG 153 | 06/25/2016 | 06/25/2017 |
| Communication Antenna | SATIMO | ANTA3 | SN 20/11 ANTA 3 | 06/21/2016 | 06/20/2017 |
| Laptop POSITIONING DEVICE | SATIMO | LSH15 | SN 24/11 LSH15 | N/A | N/A |
| ePOSITIONING DEVICE | SATIMO | MSH73 | SN 24/11 MSH73 | N/A | N/A |
| DUMMY PROBE | ANTENNESSA | | DP41 | N/A | N/A |
| SAM PHANTOM | SATIMO | SAM87 | SN 24/11 SAM87 | N/A | N/A |
| Elliptic Phantom | SATIMO | ELLI20 | SN 20/11ELLI20 | N/A | N/A |
| PHANTOM TABLE | SATIMO | N/A | N/A | N/A | N/A |
| 6 AXIS ROBOT | KUKA | KR5 | 949272 | N/A | N/A |
| high Power Solid State Amplifier (80MHz~1000MHz) | Instruments for Industry | CMC150 | M631-0408 | N/A | N/A |
| Medium Power Solid State Amplifier (0.8~4.2GHz) | Instruments for Industry | S41-25 | M629-0408 | N/A | N/A |
| Wave Tube Amplifier 4-8 GHz at 20Watt | Hughes Aircraft Company | 1277H02F000 | 81 | N/A | N/A |

9 OUTPUT POWER VERIFICATION

Test Condition:

1. Conducted Measurement
EUT was set for low, mid, high channel with modulated mode and highest RF output power.
The base station simulator was connected to the antenna terminal.
2. Conducted Emissions Measurement Uncertainty
All test measurements carried out are traceable to national standards. The uncertainty of the measurement at a confidence level of approximately 95% (in the case where distributions are normal), with a coverage factor of 2, in the range 30MHz – 40GHz is ± 1.5 dB.
3. Environmental Conditions

| | |
|----------------------|----------|
| Temperature | 23°C |
| Relative Humidity | 53% |
| Atmospheric Pressure | 1019mbar |
4. Test Date : July 8th,2016
Tested By : Wiky Jam

Test Procedures:

Mobile Phone radio output power measurement

1. The transmitter output port was connected to base station emulator.
2. Establish communication link between emulator and EUT and set EUT to operate at maximum output power all the time.
3. Select lowest, middle, and highest channels for each band and different possible test mode.
4. Measure the conducted peak burst power and conducted average burst power from EUT antenna port.

Other radio output power measurement

The output power was measured using power meter at low, mid, and hi channels.

Source-based Time Averaged Burst Power Calculation:

For TDMA, the following duty cycle factor was used to calculate the source-based time average power

| Number of Time slot | 1 | 2 | 3 | 4 |
|---------------------|----------|----------|----------|----------|
| Duty Cycle | 1:8 | 1:4 | 1:2.66 | 1:2 |
| Duty cycle factor | -9.03 dB | -6.02 dB | -4.26 dB | -3.01 dB |
| Crest Factor | 8 | 4 | 2.66 | 2 |

Remark: *Time slot duty cycle factor = $10 * \log (1 / \text{Time Slot Duty Cycle})$*

Source based time averaged power = Maximum burst averaged power (1 Uplink) – 9.03 dB

Source based time averaged power = Maximum burst averaged power (2 Uplink) – 6.02 dB

Source based time averaged power = Maximum burst averaged power (4 Uplink) – 3.01 dB

Test Result:

GSM:

| Burst Average Power (dBm); | | | | | | | | |
|--|--------|-------|-------|------------------------|---------|-------|--------|------------------------|
| Band | GSM850 | | | | PCS1900 | | | |
| Channel | 128 | 190 | 251 | Tune up Power tolerant | 512 | 661 | 810 | Tune up Power tolerant |
| Frequency (MHz) | 824.2 | 836.6 | 848.8 | / | 1850.2 | 1880 | 1909.8 | / |
| GSM Voice (1 uplink),GMSK | 32.29 | 32.19 | 32.14 | 32±1 | 29.77 | 29.56 | 29.66 | 29±1 |
| GPRS Multi-Slot Class 8 (1 uplink),GMSK | 32.22 | 32.14 | 32.08 | 32±1 | 28.73 | 28.74 | 28.75 | 29±1 |
| GPRS Multi-Slot Class 10 (2 uplink),GMSK | 30.3 | 30.24 | 30.15 | 30±1 | 26.3 | 26.37 | 26.56 | 26±1 |
| GPRS Multi-Slot Class 12 (4 uplink),GMSK | 26.51 | 26.44 | 26.34 | 26±1 | 22.75 | 22.74 | 22.75 | 22.7±1 |
| EGPRS Multi-Slot Class 8 (1 uplink) GMSK MCS1 | 32.15 | 32.11 | 31.98 | 32±1 | 28.56 | 28.53 | 28.64 | 29±1 |
| EGPRS Multi-Slot Class 10 (2 uplink) GMSK MCS1 | 30.22 | 30.12 | 30.08 | 30±1 | 26.28 | 26.30 | 26.46 | 26±1 |
| EGPRS Multi-Slot Class 12 (4 uplink) GMSK MCS1 | 26.45 | 26.43 | 26.33 | 26±1 | 22.7 | 22.73 | 22.85 | 22±1 |
| Remark : GPRS, CS1 coding scheme. EGPRS, MCS1 coding scheme. Multi-Slot Class 8 , Support Max 4 downlink, 1 uplink , 5 working link Multi-Slot Class 10 , Support Max 4 downlink, 2 uplink , 5 working link Multi-Slot Class 12 , Support Max 4 downlink, 4 uplink , 5 working link | | | | | | | | |

| Source Based time Average Power (dBm) | | | | | | | | |
|---|--------|-------|-------|---------------------|---------|-------|--------|---------------------|
| Band | GSM850 | | | | PCS1900 | | | |
| Channel | 128 | 190 | 251 | Time Average factor | 512 | 661 | 810 | Time Average factor |
| Frequency (MHz) | 824.2 | 836.6 | 848.8 | / | 1850.2 | 1880 | 1909.8 | / |
| GSM Voice (1 uplink),GMSK | 23.26 | 23.16 | 23.11 | -9.03 | 20.74 | 20.53 | 20.63 | -9.03 |
| GPRS Multi-Slot Class 8 (1 uplink),GMSK | 23.19 | 23.11 | 23.05 | -9.03 | 19.70 | 19.71 | 19.72 | -9.03 |
| GPRS Multi-Slot Class 10 (2 uplink),GMSK | 24.28 | 24.22 | 24.13 | -6.02 | 20.28 | 20.35 | 20.54 | -6.02 |
| GPRS Multi-Slot Class 12 (4 uplink),GMSK | 23.50 | 23.43 | 23.33 | -3.01 | 19.74 | 19.73 | 19.74 | -3.01 |
| EGPRS Multi-Slot Class 8 (1 uplink) GMSK MCS1 | 23.12 | 23.08 | 22.95 | -9.03 | 19.53 | 19.50 | 19.61 | -9.03 |
| EGPRS Multi-Slot Class 10 (2 uplink) GMSK MCS1 | 24.20 | 24.10 | 24.06 | -6.02 | 20.26 | 20.28 | 20.44 | -6.02 |
| EGPRS Multi-Slot Class 12 (4 uplink) GMSK MCS1 | 23.44 | 23.42 | 23.32 | -3.01 | 19.69 | 19.72 | 19.84 | -3.01 |
| Remark : Time average factor = 1 uplink , $10 \cdot \log(1/8) = -9.03\text{dB}$, 2 uplink , $10 \cdot \log(2/8) = -6.02\text{dB}$, 4 uplink , $10 \cdot \log(4/8) = -3.01\text{dB}$ Source based time average power = Burst Average power + Time Average factor | | | | | | | | |

Note: 1. due to the source based time average power; Body SAR was performed at GPRS Multi-slot class 10.

WCDMA BAND V

| Band/ Time Slot configuration | Channel | Frequency | Average power (dBm) | Tune up Power tolerant |
|-------------------------------|---------|-----------|---------------------|------------------------|
| RMC 12.2kbps | 4132 | 826.4 | 21.20 | 21±1 |
| | 4175 | 835.0 | 21.36 | 21±1 |
| | 4233 | 846.6 | 21.25 | 21±1 |
| HSDPA Subtest1 | 4132 | 826.4 | 21.29 | 21.5±1 |
| | 4175 | 835.0 | 21..78 | 21.5±1 |
| | 4233 | 846.6 | 21.69 | 21.5±1 |
| HSDPA Subtest2 | 4132 | 826.4 | 21.52 | 21.5±1 |
| | 4175 | 835.0 | 21.59 | 21.5±1 |
| | 4233 | 846.6 | 21.54 | 21.5±1 |
| HSDPA Subtest3 | 4132 | 826.4 | 21.79 | 21.5±1 |
| | 4175 | 835.0 | 21.27 | 21.5±1 |
| | 4233 | 846.6 | 21.16 | 21.5±1 |
| HSDPA Subtest4 | 4132 | 826.4 | 21.06 | 21.5±1 |
| | 4175 | 835.0 | 21.3 | 21.5±1 |
| | 4233 | 846.6 | 21.09 | 21.5±1 |
| HSUPA Subtest1 | 4132 | 826.4 | 21.16 | 21.5±1 |
| | 4175 | 835.0 | 21.87 | 21.5±1 |
| | 4233 | 846.6 | 21.56 | 21.5±1 |
| HSUPA Subtest2 | 4132 | 826.4 | 21.25 | 21.5±1 |
| | 4175 | 835.0 | 21.28 | 21.5±1 |
| | 4233 | 846.6 | 21.27 | 21.5±1 |
| HSUPA Subtest3 | 4132 | 826.4 | 21.36 | 21.5±1 |
| | 4175 | 835.0 | 21.39 | 21.5±1 |
| | 4233 | 846.6 | 21.34 | 21.5±1 |
| HSUPA Subtest4 | 4132 | 826.4 | 21.65 | 21.5±1 |
| | 4175 | 835.0 | 21.64 | 21.5±1 |
| | 4233 | 846.6 | 21.68 | 21.5±1 |
| HSUPA Subtest5 | 4132 | 826.4 | 21.55 | 21.5±1 |
| | 4175 | 835.0 | 21.51 | 21.5±1 |
| | 4233 | 846.6 | 21.5 | 21.5±1 |

Note: 1. Due to the maximum SAR for 12.2kbps RMC < 75% of the SAR limit, SAR was performed at RMC 12.2kbps.

WCDMA Band II :

| Band/ Time Slot configuration | Channel | Frequency | Average power (dBm) | Tune up Power tolerant |
|-------------------------------|---------|-----------|---------------------|------------------------|
| RMC 12.2kbps | 9262 | 1852.4 | 20.65 | 21±1 |
| | 9400 | 1880.0 | 21.77 | 21±1 |
| | 9538 | 1907.6 | 21.39 | 21±1 |
| HSDPA Subtest1 | 9262 | 1852.4 | 21.53 | 21.5±1 |
| | 9400 | 1880.0 | 21.61 | 21.5±1 |
| | 9538 | 1907.6 | 21.65 | 21.5±1 |
| HSDPA Subtest2 | 9262 | 1852.4 | 21.85 | 21.5±1 |
| | 9400 | 1880.0 | 21.78 | 21.5±1 |
| | 9538 | 1907.6 | 21.4 | 21.5±1 |
| HSDPA Subtest3 | 9262 | 1852.4 | 21.56 | 21.5±1 |
| | 9400 | 1880.0 | 21.85 | 21.5±1 |
| | 9538 | 1907.6 | 21.56 | 21.5±1 |
| HSDPA Subtest4 | 9262 | 1852.4 | 21.1 | 21.5±1 |
| | 9400 | 1880.0 | 21.62 | 21.5±1 |
| | 9538 | 1907.6 | 21.29 | 21.5±1 |
| HSUPA Subtest1 | 9262 | 1852.4 | 21.33 | 21.5±1 |
| | 9400 | 1880.0 | 21.54 | 21.5±1 |
| | 9538 | 1907.6 | 21.56 | 21.5±1 |
| HSUPA Subtest2 | 9262 | 1852.4 | 21.06 | 21.5±1 |
| | 9400 | 1880.0 | 21.55 | 21.5±1 |
| | 9538 | 1907.6 | 21.52 | 21.5±1 |
| HSUPA Subtest3 | 9262 | 1852.4 | 21.29 | 21.5±1 |
| | 9400 | 1880.0 | 21.63 | 21.5±1 |
| | 9538 | 1907.6 | 21.24 | 21.5±1 |
| HSUPA Subtest4 | 9262 | 1852.4 | 21.3 | 21.5±1 |
| | 9400 | 1880.0 | 21.62 | 21.5±1 |
| | 9538 | 1907.6 | 21.25 | 21.5±1 |
| HSUPA Subtest5 | 9262 | 1852.4 | 21.05 | 21.5±1 |
| | 9400 | 1880.0 | 21.64 | 21.5±1 |
| | 9538 | 1907.6 | 21.84 | 21.5±1 |

Note: 1. Due to the maximum SAR for 12.2kbps RMC < 75% of the SAR limit, SAR was performed at RMC 12.2kbps.

WCDMA BandIV:

| Band/ Time Slot configuration | Channel | Frequency | Average power (dBm) | Tune up Power tolerant |
|-------------------------------|---------|-----------|---------------------|------------------------|
| RMC 12.2kbps | 1313 | 1712.6 | 20.86 | 21±1 |
| | 1413 | 1732.6 | 21.00 | 21±1 |
| | 1512 | 1752.4 | 20.80 | 21±1 |
| HSDPA Subtest1 | 1313 | 1712.6 | 21.35 | 21.3±1 |
| | 1413 | 1732.6 | 21.39 | 21.3±1 |
| | 1512 | 1752.4 | 21.36 | 21.3±1 |
| HSDPA Subtest2 | 1313 | 1712.6 | 21.06 | 21.3±1 |
| | 1413 | 1732.6 | 21.05 | 21.3±1 |
| | 1512 | 1752.4 | 21.39 | 21.3±1 |
| HSDPA Subtest3 | 1313 | 1712.6 | 21.26 | 21.3±1 |
| | 1413 | 1732.6 | 21.28 | 21.3±1 |
| | 1512 | 1752.4 | 21.29 | 21.3±1 |
| HSDPA Subtest4 | 1313 | 1712.6 | 21.17 | 21.3±1 |
| | 1413 | 1732.6 | 21.09 | 21.3±1 |
| | 1512 | 1752.4 | 21.18 | 21.3±1 |
| HSUPA Subtest1 | 1313 | 1712.6 | 21.26 | 21.3±1 |
| | 1413 | 1732.6 | 21.35 | 21.3±1 |
| | 1512 | 1752.4 | 21.29 | 21.3±1 |
| HSUPA Subtest2 | 1313 | 1712.6 | 21.42 | 21.3±1 |
| | 1413 | 1732.6 | 21.53 | 21.3±1 |
| | 1512 | 1752.4 | 21.35 | 21.3±1 |
| HSUPA Subtest3 | 1313 | 1712.6 | 21.52 | 21.3±1 |
| | 1413 | 1732.6 | 21.58 | 21.3±1 |
| | 1512 | 1752.4 | 21.25 | 21.3±1 |
| HSUPA Subtest4 | 1313 | 1712.6 | 21.16 | 21.3±1 |
| | 1413 | 1732.6 | 21.18 | 21.3±1 |
| | 1512 | 1752.4 | 21.35 | 21.3±1 |
| HSUPA Subtest5 | 1313 | 1712.6 | 21.43 | 21.3±1 |
| | 1413 | 1732.6 | 21.63 | 21.3±1 |
| | 1512 | 1752.4 | 21.59 | 21.3±1 |

Note: 1. Due to the maximum SAR for 12.2kbps RMC < 75% of the SAR limit, SAR was performed at RMC 12.2kbps.

WIFI Mode (2.4G)

| Mode | Channel number | Frequency (MHz) | Data rate(Mbps) | Average Output Power(dBm) | Average Tune up limited(dBm) |
|---------------|----------------|-----------------|-----------------|---------------------------|------------------------------|
| 802.11b | 1 | 2412 | 1 | 8.33 | 8.5±1 |
| | 6 | 2437 | 1 | 8.38 | 8.5±1 |
| | 11 | 2462 | 1 | 8.54 | 8.5±1 |
| 802.11g | 1 | 2412 | 6 | 8.28 | 8.5±1 |
| | 6 | 2437 | 6 | 8.24 | 8.5±1 |
| | 11 | 2462 | 6 | 8.62 | 8.5±1 |
| 802.11n(HT20) | 1 | 2412 | MCS0 | 8.48 | 8.5±1 |
| | 6 | 2437 | MCS0 | 8.65 | 8.5±1 |
| | 11 | 2462 | MCS0 | 8.60 | 8.5±1 |
| 802.11n(HT40) | 3 | 2422 | MCS0 | 8.33 | 8.5±1 |
| | 6 | 2437 | MCS0 | 8.38 | 8.5±1 |
| | 9 | 2452 | MCS0 | 8.54 | 8.5±1 |

Bluetooth Measurement Result

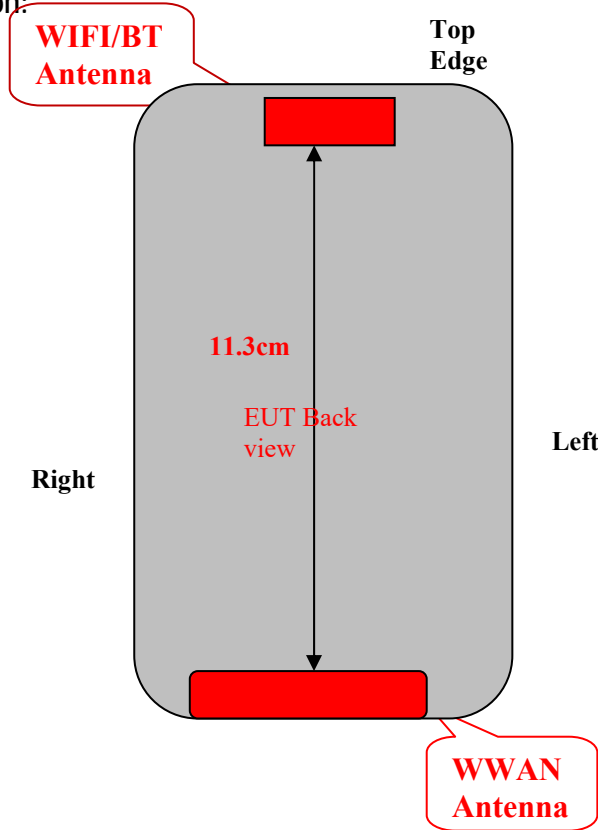
| Mode | Frequency (MHz) | Output Power(dBm) | Tune up limited(dBm) |
|----------|-----------------|-------------------|----------------------|
| GFSK | 2402 | 7.093 | 8±1 |
| | 2441 | 7.921 | 8±1 |
| | 2480 | 8.837 | 8±1 |
| π/4DQPSK | 2402 | 9.078 | 9.9±1 |
| | 2441 | 10.13 | 9.9±1 |
| | 2480 | 10.83 | 9.9±1 |
| 8DPSK | 2402 | 9.572 | 10.5±1 |
| | 2441 | 10.67 | 10.5±1 |
| | 2480 | 11.46 | 10.5±1 |

Note: 1. Both WIFI and BT power was test and only Maximum Power was provide here.

2. SAR Test Exclusion Threshold for WIFI&BT is about 9.6mW, the maximum tune up power of WIFI is 9.5dBm=8.91mW, BT is 2dBm=1.58mW, no stand-alone SAR is required.

Antenna Separation Information:

EUT antenna location:



Test position consideration:

| Distance of EUT antenna-to-edge/surface(mm), Test distance:5mm | | | | | | |
|---|-----------|------------|-----------|------------|----------|-------------|
| Antennas | Back side | Front side | Left Edge | Right Edge | Top Edge | Bottom Edge |
| WWAN | 2 | 2 | 2 | 2 | 128 | 2 |
| WLAN | 2 | 2 | 56 | 2 | 2 | 127 |
| Bluetooth | 2 | 2 | 56 | 2 | 2 | 127 |

| Test distance:5mm | | | | | | |
|-------------------|-----------|------------|-----------|------------|----------|-------------|
| Antennas | Back side | Front side | Left Edge | Right Edge | Top Edge | Bottom Edge |
| WWAN | YES | YES | YES | YES | NO | YES |
| WLAN | NO | NO | NO | NO | NO | NO |
| Bluetooth | NO | NO | NO | NO | NO | NO |

Note:

1. Head/Body-worn/Hotspot mode SAR assessments are required.
2. Referring to KDB 941225 D06v02, when the overall device length and width are $\geq 9\text{cm} * 5\text{cm}$, the test distance is 10mm. SAR must be measured for all sides and surfaces with a transmitting antenna located within 25mm from that surface or edge.
3. Per KDB 447498 D01v05r02, for handsets the test separation distance is determined by the smallest distance between the outer surface of the device and the user, which is 0 mm for head SAR, 10 mm for hotspot SAR, and 10 mm for body-worn SAR.
4. WLAN/BT SAR is not required due to the low power.

10 SAR TEST RESULTS

Test Condition:

| | | | |
|----|---|----------------------|----------|
| 1. | SAR Measurement The distance between the EUT and the antenna of the emulator is more than 50 cm and the output power radiated from the emulator antenna is at least 30 dB less than the output power of EUT. | | |
| 2 | Measurement Uncertainty: See page 34 for detail | | |
| 3 | Environmental Conditions | Temperature | 23°C |
| | | Relative Humidity | 53% |
| | | Atmospheric Pressure | 1019mbar |
| 4 | Test Date : July 8th,2016~July 13th, 2016 Tested By : Wiky Jam | | |

Generally Test Procedures:

1. Establish communication link between EUT and base station emulation by air link.
2. Place the EUT in the selected test position. (Cheek, tilt or flat)
3. Perform SAR testing at middle or highest output power channel under the selected test mode. If the measured 1-g SAR is ≤ 0.8 W/kg, then testing for the other channel will not be performed.
4. When SAR is < 0.8 W/kg, no repeated SAR measurement is required

For WCDMA test:

1. KDB941225 D01-Body SAR is not required for HSDPA when the average output of each RF channel with HSDPA active is less than 0.25dB higher than measured without HSDPA using 12.2kbps RMC or the maximum SAR for 12.2kbps RMC $< 75\%$ of the SAR limit.
2. KDB941225 D01-Body SAR is not required for handset with HSPA capabilities when the maximum average output of each RF channel with HSUPA/HSDPA active is less than 0.25dB higher than that measure without HSUPA/HSDPA using 12.2kbps RMC AND THE maximum SAR for 12.2kbps RMC is $< 75\%$ of the SAR limit

SAR Summary Test Result:

GSM850

| Date of Measured : July 8th, 2016 | | | Body-worn/Hotspot Separation Distance: 10mm | | | | | |
|-----------------------------------|---------|-----------------|---|-----------------|-----------------------|----------------------------------|--------------------------------------|--------------------------------|
| Position | Channel | Mode | SAR 1g(W/kg) | Limit (W/kg) | Power Drift (%) | Maximum Turn-up Power(dBm) | measured output power (dBm) | Scaled Maximum SAR(W/kg) |
| Right Head Cheek | Mid | GSM voice | 0.313 | 1.6 | 1.02 | 33 | 32.19 | 0.38 |
| Right Head Tilt | Mid | GSM voice | 0.157 | 1.6 | -1.02 | 33 | 32.19 | 0.19 |
| Left Head Cheek | Mid | GSM voice | 0.335 | 1.6 | -1.38 | 33 | 32.19 | 0.40 |
| Left Head Tilt | Mid | GSM voice | 0.164 | 1.6 | 1.51 | 33 | 32.19 | 0.20 |
| Body Front side | Mid | GPRS Class10 | 0.428 | 1.6 | -2.96 | 31 | 30.24 | 0.51 |
| Body Back-side | Mid | GPRS Class10 | 0.564 | 1.6 | -1.39 | 31 | 30.24 | 0.67 |
| Body Right-side | Mid | GPRS Class10 | 0.252 | 1.6 | 0.26 | 31 | 30.24 | 0.30 |
| Body Left-side | Mid | GPRS Class10 | 0.354 | 1.6 | 1.53 | 31 | 30.24 | 0.42 |
| Body Bottom-side | Mid | GPRS Class10 | 0.126 | 1.6 | -2.33 | 31 | 30.24 | 0.15 |

WCDMA BAND V (850)

| Date of Measured : July 8th, 2016 | | | Body-worn/Hotspot Separation Distance: 10mm | | | | | |
|-----------------------------------|---------|-----------------|---|-----------------|-----------------------|----------------------------------|--------------------------------------|--------------------------------|
| Position | Channel | Mode | SAR 1g(W/kg) | Limit (W/kg) | Power Drift (%) | Maximum Turn-up Power(dBm) | measured output power (dBm) | Scaled Maximum SAR(W/kg) |
| Right Head Cheek | Mid | RMC 12.2kbps | 0.222 | 1.6 | 2.37 | 22 | 21.36 | 0.26 |
| Right Head Tilt | Mid | RMC 12.2kbps | 0.107 | 1.6 | 1.34 | 22 | 21.36 | 0.12 |
| Left Head Cheek | Mid | RMC 12.2kbps | 0.281 | 1.6 | -3.01 | 22 | 21.36 | 0.33 |
| Left Head Tilt | Mid | RMC 12.2kbps | 0.132 | 1.6 | 0.91 | 22 | 21.36 | 0.15 |
| Body Front side | Mid | RMC 12.2kbps | 0.243 | 1.6 | -2.13 | 22 | 21.36 | 0.28 |
| Body Back-side | Mid | RMC 12.2kbps | 0.430 | 1.6 | -1.46 | 22 | 21.36 | 0.50 |
| Body Right-side | Mid | RMC 12.2kbps | 0.120 | 1.6 | 1.28 | 22 | 21.36 | 0.14 |
| Body Left-side | Mid | RMC 12.2kbps | 0.127 | 1.6 | -2.06 | 22 | 21.36 | 0.15 |
| Body Bottom-side | Mid | RMC 12.2kbps | 0.109 | 1.6 | 0.63 | 22 | 21.36 | 0.13 |

PCS1900:

| Date of Measured : July 13th, 2016 | | | Body-worn/Hotspot Separation Distance:10mm | | | | | |
|------------------------------------|---------|-----------------|--|-----------------|-----------------------|----------------------------------|--------------------------------------|--------------------------------|
| Position | Channel | Mode | SAR 1g(W/kg) | Limit (W/kg) | Power Drift (%) | Maximum Turn-up Power(dBm) | measured output power (dBm) | Scaled Maximum SAR(W/kg) |
| Right Head Cheek | Mid | GSM voice | 0.158 | 1.6 | -2.88 | 30 | 29.56 | 0.17 |
| Right Head Tilt | Mid | GSM voice | 0.097 | 1.6 | 1.08 | 30 | 29.56 | 0.11 |
| Left Head Cheek | Mid | GSM voice | 0.117 | 1.6 | 0.65 | 30 | 29.56 | 0.13 |
| Left Head Tilt | Mid | GSM voice | 0.076 | 1.6 | 0.25 | 30 | 29.56 | 0.08 |
| Body Front side | Mid | GPRS Class10 | 0.307 | 1.6 | 1.31 | 27 | 26.37 | 0.35 |
| Body Back side | Mid | GPRS Class10 | 0.575 | 1.6 | -2.95 | 27 | 26.37 | 0.66 |
| Body Right-side | Mid | GPRS Class10 | 0.185 | 1.6 | 2.99 | 27 | 26.37 | 0.21 |
| Body Left-side | Mid | GPRS Class10 | 0.163 | 1.6 | -1.87 | 27 | 26.37 | 0.19 |
| Body Bottom-side | Mid | GPRS Class10 | 0.102 | 1.6 | -0.83 | 27 | 26.37 | 0.12 |

WCDMA BAND II (1900):

| Date of Measured : July 13th, 2016 | | | Body-worn/Hotspot Separation Distance: 10mm | | | | | |
|------------------------------------|---------|-----------------|---|-----------------|-----------------------|----------------------------------|--------------------------------------|--------------------------------|
| Position | Channel | Mode | SAR 1g(W/kg) | Limit (W/kg) | Power Drift (%) | Maximum Turn-up Power(dBm) | measured output power (dBm) | Scaled Maximum SAR(W/kg) |
| Right Head Cheek | Mid | RMC 12.2kbps | 0.259 | 1.6 | 0.55 | 22 | 21.77 | 0.27 |
| Right Head Tilt | Mid | RMC 12.2kbps | 0.122 | 1.6 | 1.38 | 22 | 21.77 | 0.13 |
| Left Head Cheek | Mid | RMC 12.2kbps | 0.292 | 1.6 | 1.70 | 22 | 21.77 | 0.31 |
| Left Head Tilt | Mid | RMC 12.2kbps | 0.165 | 1.6 | 0.28 | 22 | 21.77 | 0.17 |
| Body Front side | Mid | RMC 12.2kbps | 0.453 | 1.6 | -2.04 | 22 | 21.77 | 0.48 |
| Body Back-side | Low | RMC 12.2kbps | 0.851 | 1.6 | 0.60 | 22 | 20.65 | 1.16 |
| Body Back-side | Mid | RMC 12.2kbps | 0.878 | 1.6 | 0.48 | 22 | 21.77 | 0.93 |
| Body Back-side | Mid | RMC 12.2kbps | 0.859 | 1.6 | -3.22 | 22 | 21.77 | 0.91 |
| Body Back-side | High | RMC 12.2kbps | 0.830 | 1.6 | -1.68 | 22 | 21.39 | 0.96 |
| Body Right-side | Mid | RMC 12.2kbps | 0.271 | 1.6 | -1.44 | 22 | 21.77 | 0.29 |
| Body Left-side | Mid | RMC 12.2kbps | 0.253 | 1.6 | 0.08 | 22 | 21.77 | 0.27 |
| Body Bottom-side | Mid | RMC 12.2kbps | 0.128 | 1.6 | -3.14 | 22 | 21.77 | 0.13 |

WCDMA BAND IV (1700):

| Date of Measured : July 11th, 2016 | | | Body-worn/Hotspot Separation Distance: 10mm | | | | | |
|------------------------------------|---------|-----------------|---|-----------------|-----------------------|----------------------------------|--------------------------------------|--------------------------------|
| Position | Channel | Mode | SAR 1g(W/kg) | Limit (W/kg) | Power Drift (%) | Maximum Turn-up Power(dBm) | measured output power (dBm) | Scaled Maximum SAR(W/kg) |
| Right Head Cheek | Mid | RMC 12.2kbps | 0.419 | 1.6 | 2.36 | 22 | 21.00 | 0.53 |
| Right Head Tilt | Mid | RMC 12.2kbps | 0.206 | 1.6 | 1.38 | 22 | 21.00 | 0.26 |
| Left Head Cheek | Mid | RMC 12.2kbps | 0.416 | 1.6 | -2.22 | 22 | 21.00 | 0.52 |
| Left Head Tilt | Mid | RMC 12.2kbps | 0.201 | 1.6 | 0.28 | 22 | 21.00 | 0.25 |
| Body Front side | Mid | RMC 12.2kbps | 0.641 | 1.6 | -0.67 | 22 | 21.00 | 0.81 |
| Body Back-side | Low | RMC 12.2kbps | 0.821 | 1.6 | 1.21 | 22 | 20.86 | 1.07 |
| Body Back-side | Mid | RMC 12.2kbps | 0.882 | 1.6 | 0.20 | 22 | 21.00 | 1.11 |
| Body Back-side | Mid | RMC 12.2kbps | 0.878 | 1.6 | -3.60 | 22 | 21.00 | 1.11 |
| Body Back-side | High | RMC 12.2kbps | 0.876 | 1.6 | 0.66 | 22 | 20.80 | 1.15 |
| Body Right-side | Mid | RMC 12.2kbps | 0.267 | 1.6 | -1.44 | 22 | 21.00 | 0.34 |
| Body Left-side | Mid | RMC 12.2kbps | 0.239 | 1.6 | 1.60 | 22 | 21.00 | 0.30 |
| Body Bottom-side | Mid | RMC 12.2kbps | 0.147 | 1.6 | -0.28 | 22 | 21.00 | 0.19 |

Measurement variability consideration

According to KDB 865664 D01v01 section 2.8.1, repeated measurements are required following the procedures as below:

1. Repeated measurement is not required when the original highest measured SAR is $< 0.80\text{W/kg}$; steps 2) through 4) do not apply.
2. When the original highest measured SAR is $\geq 0.80\text{ W/kg}$, repeat that measurement once.
3. Perform a second repeated measurement only if the ratio of largest to smallest SAR for the original and first repeated measurements is > 1.20 or when the original or repeated measurement is $\geq 1.45\text{ W/kg}$ (~ 10% from the 1-g SAR limit).
4. Perform a third repeated measurement only if the original, first or second repeated measurement is $\geq 1.5\text{ W/kg}$ and the ratio of largest to smallest SAR for the original, first and second repeated measurements is > 1.20 .

Repeated SAR:

| Band | Position | Channel | Mode | measured SAR(W/kg) | | | | |
|---------------|----------------|---------|--------------|--------------------|--------------|-------|--------------|-------|
| | | | | Original | 1st Repeated | | 2nd Repeated | |
| | | | | | Value | Ratio | Value | Ratio |
| WCDMA BAND IV | Body Back-side | Mid | GPRS Class10 | 0.882 | 0.878 | 1.00 | NA | NA |
| WCDMA BAND II | Body Back-side | Mid | GPRS Class10 | 0.878 | 0.859 | 1.02 | NA | NA |

Simultaneous Transmission SAR Analysis.

| No. | Applicable Simultaneous Transmission Combination |
|-----|--|
| 1. | WWAN+WIFI |
| 2. | WWAN+BT |

Note:

1. For simultaneous transmission analysis, Bluetooth SAR is estimated per KDB 447498 D01 v06 base on the formula below:
 - $(\text{max. power of channel, including tune-up tolerance, mW}) / (\text{min. test separation distance, mm}) \cdot [\sqrt{f_{\text{GHz}}/x}] \text{ W/kg}$ for test separation distances $\leq 50\text{ mm}$;
where $x = 7.5$ for 1-g SAR, and $x = 18.75$ for 10-g SAR.
 - 0.4 W/kg for 1-g SAR and 1.0 W/kg for 10-g SAR, when the test separation distances is $> 50\text{ mm}$.²¹
2. If the test separation distances is $\leq 5\text{mm}$, 5mm is used for estimated SAR calculation.
3. WIFI maximum tune up power is 9.5dBm, BT's maximum tune up power is 11.5dBm and the estimated SAR is listed below.

| Test position | Head(0.5cm) | Body-worn(1.0cm) |
|--------------------------|-------------|------------------|
| WIFI Estimated SAR(W/kg) | 0.37 | 0.19 |
| BT Estimated SAR(W/kg) | 0.59 | 0.29 |

Maximum Summation:

| position | WWAN | WIFI | BT | WWAN+WIFI | WWAN+BT |
|------------|-----------------|-----------------|-----------------|-----------|---------|
| | Max. Scaled SAR | Max. Scaled SAR | Max. Scaled SAR | | |
| Head 0cm | 0.53 | 0.37 | 0.59 | 0.90 | 1.12 |
| Body 1.0cm | 1.16 | 0.19 | 0.29 | 1.35 | 1.45 |

Note: 1g-SAR scalar summation $< 1.6\text{W/kg}$, so no simultaneous SAR is required.

11 SAR MEASUREMENT REFERENCES

References

1. FCC 47 CFR Part 2 "Frequency Allocations and Radio Treaty Matters; General Rules and Regulations"
2. IEEE Std. C95.1-1999, "IEEE Standard for Safety Levels with Respect to Human Exposure to Radio Frequency Electromagnetic Fields, 3kHz to 300GHz", 1999
3. IEEE Std. 1528-2013, "IEEE Recommended Practice for Determining the Peak Spatial-Average Specific Absorption Rate (SAR) in the Human Head from Wireless Communications Devices: Measurement Techniques", June 2013
4. IEC 62209-2, "Human exposure to radio frequency fields from hand-held and body-mounted wireless communication devices—Human models, instrumentation, and procedures – Part 2: Procedure to determine the specific absorption rate(SAR) for wireless communication devices used in close proximity to the human body(frequency range of 30MHz to 6GHz)", March 2010
5. FCC KDB 447498 D01 v06, "RF Exposure Procedures and Equipment Authorization Policies For Mobile and Portable Device", October 23, 2015
6. FCC KDB 941225 D01 v03r01, "3G SAR Measurement Procedures", October 23, 2015
7. FCC KDB 865664 D01 v01r04, "SAR Measurement Requirements For 100MHz to 6GHz", August 7, 2015
8. FCC KDB648474 D04 v01r03, "SAR Evaluation Considerations for Wireless Handsets". October 23, 2015
9. FCC KDB 941225 D06 v02r01, Hot Spot SAR ,October 23, 2015

Maximum SAR measurement Plots

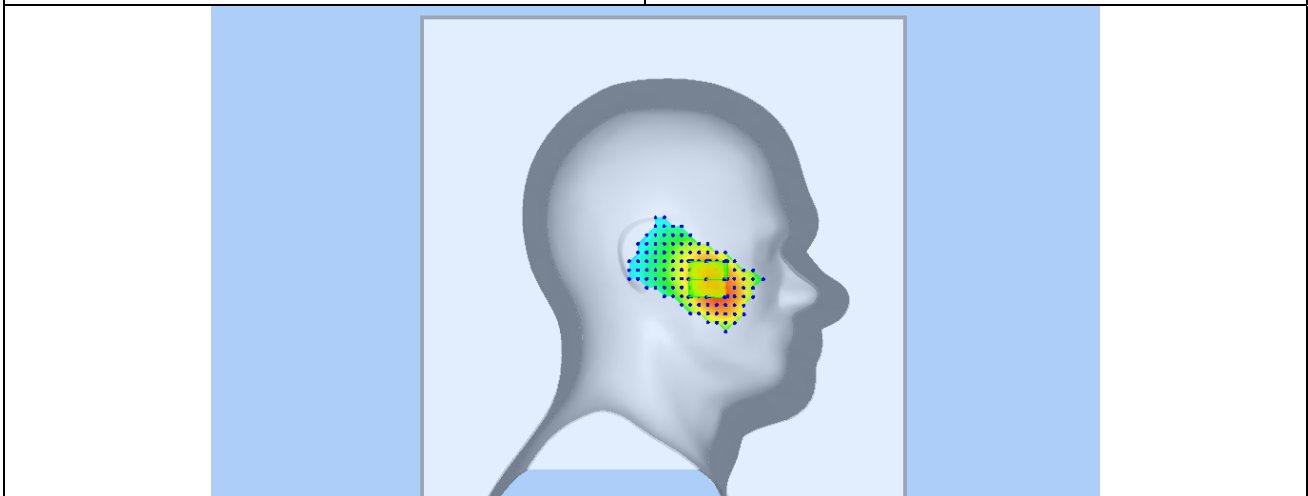
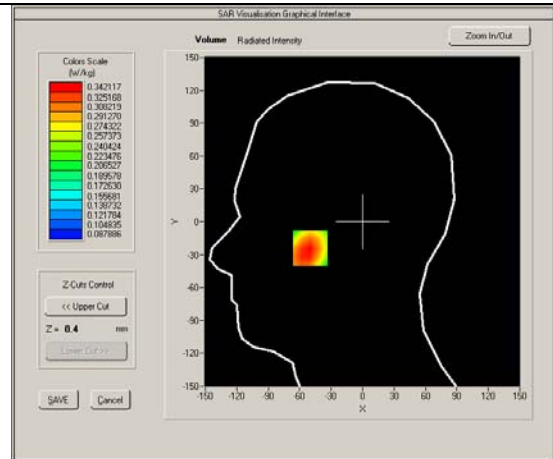
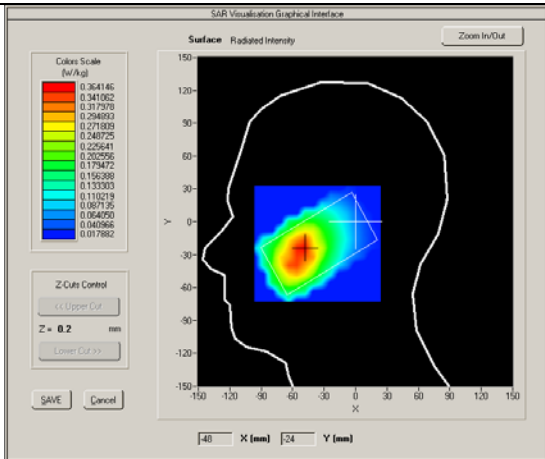
Test mode: GSM850, Middle channel (Left Head Cheek)

Product Description: Mobile Phone

Model: s5007

Test Date: July 8th, 2016

| | |
|-----------------------------------|-----------------------------|
| Medium(liquid type) | HSL_835 |
| Frequency (MHz) | 836.6000 |
| Relative permittivity (real part) | 41.8 |
| Conductivity (S/m) | 0.87 |
| E-Field Probe | SN 27/15 EPGO262 |
| Crest factor | 8.0 |
| Conversion Factor | 1.90 |
| Sensor-Surface | 4mm |
| Area Scan | dx=8mm dy=8mm |
| Zoom Scan | 5x5x7, dx=8mm dy=8mm dz=5mm |
| Variation (%) | -2.600000 |
| SAR 10g (W/Kg) | 0.142118 |
| SAR 1g (W/Kg) | 0.335184 |
| SURFACE SAR | VOLUME SAR |

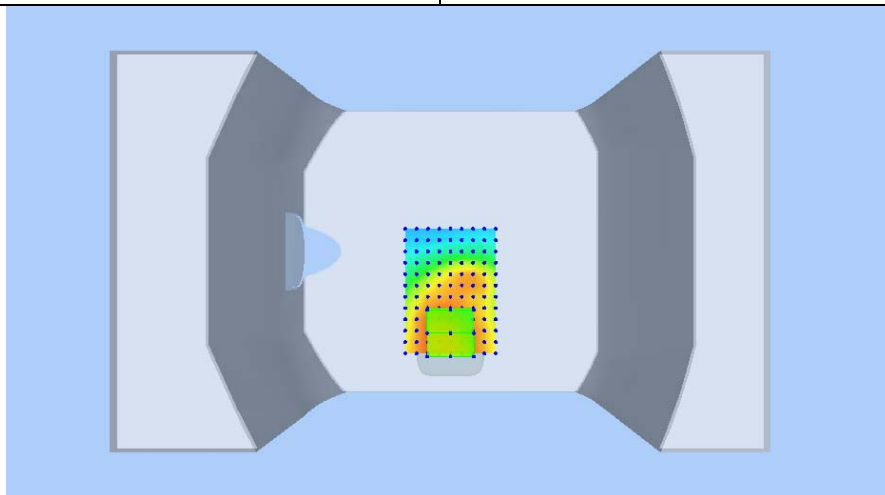
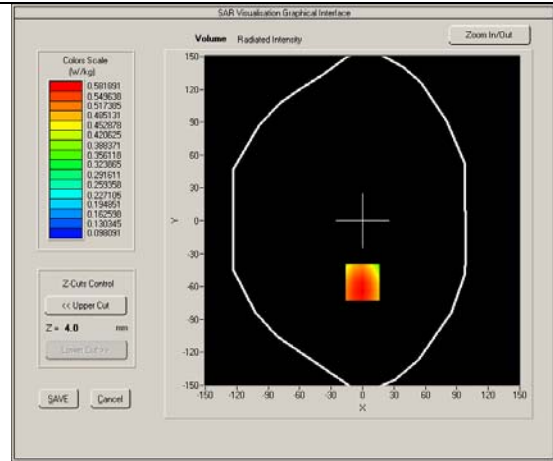
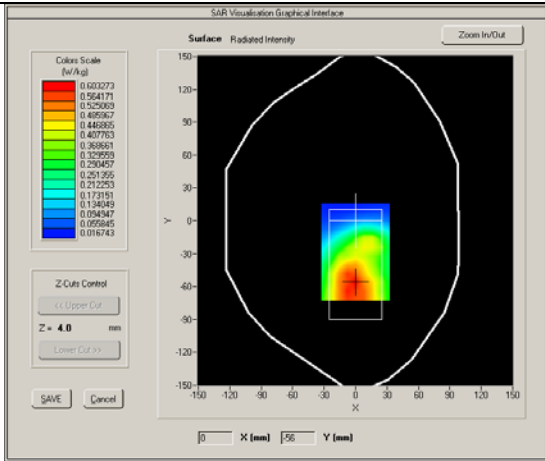


Test mode: GPRS850, Middle channel (Body Back Side)
 Product Description: Mobile Phone
 Model: s5007
 Test Date: July 8th, 2016

| | |
|-----------------------------------|----------------------------|
| Medium(liquid type) | MSL_835 |
| Frequency (MHz) | 836.6000 |
| Relative permittivity (real part) | 55.16 |
| Conductivity (S/m) | 0.96 |
| E-Field Probe | SN 27/15 EPGO262 |
| Crest factor | 2.0 |
| Conversion Factor | 1.97 |
| Sensor-Surface | 4mm |
| Area Scan | dx=8mm dy=8mm |
| Zoom Scan | 5x5x7,dx=8mm dy=8mm dz=5mm |
| Variation (%) | -0.090000 |
| SAR 10g (W/Kg) | 0.256421 |
| SAR 1g (W/Kg) | 0.564461 |

SURFACE SAR

VOLUME SAR



Test mode: WCDMA Band V, Middle channel (Left Head Cheek)

Product Description: Mobile Phone

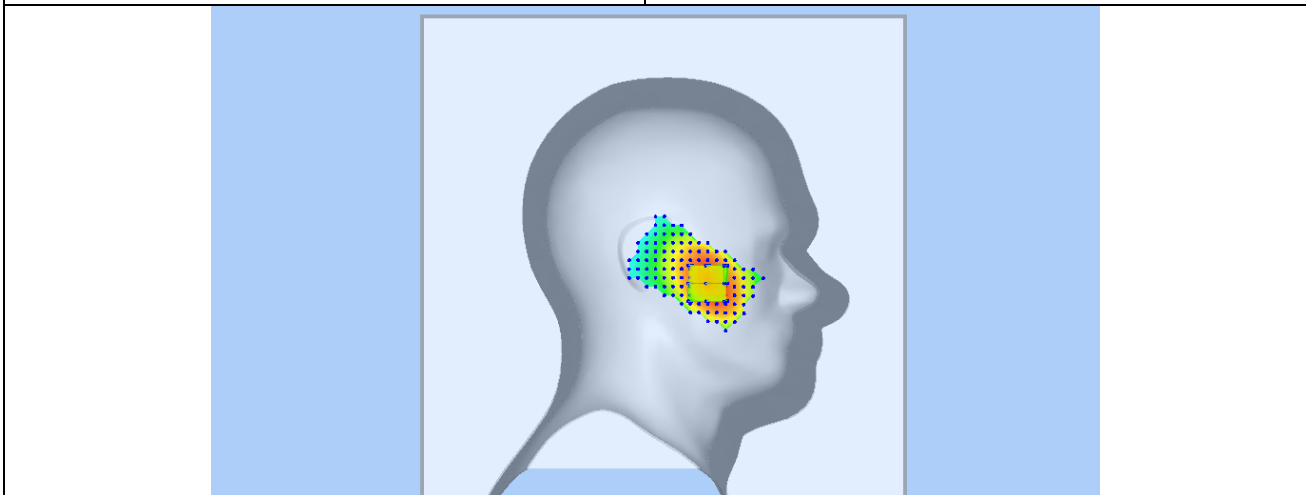
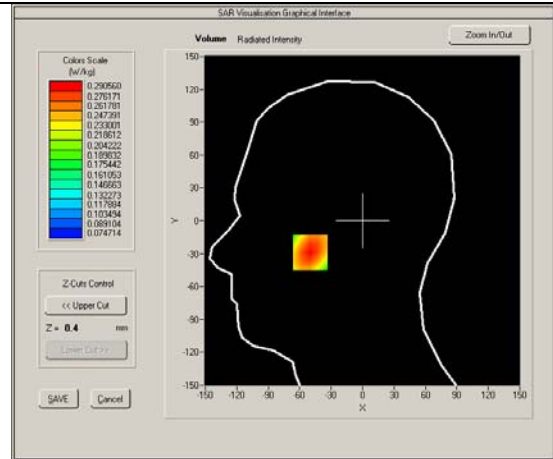
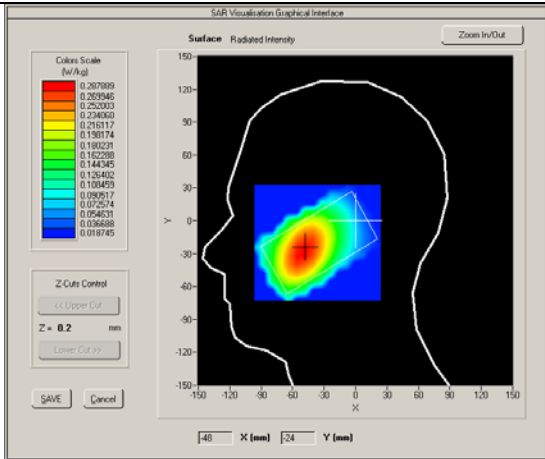
Model: s5007

Test Date: July 8th, 2016

| | |
|-----------------------------------|----------------------------|
| Medium(liquid type) | HSL_835 |
| Frequency (MHz) | 835.000 |
| Relative permittivity (real part) | 41.8 |
| Conductivity (S/m) | 0.87 |
| E-Field Probe | SN 27/15 EPGO262 |
| Crest factor | 1.0 |
| Conversion Factor | 1.90 |
| Sensor-Surface | 4mm |
| Area Scan | dx=8mm dy=8mm |
| Zoom Scan | 5x5x7,dx=8mm dy=8mm dz=5mm |
| Variation (%) | 1.730000 |
| SAR 10g (W/Kg) | 0.123723 |
| SAR 1g (W/Kg) | 0.281103 |

SURFACE SAR

VOLUME SAR



Test mode: WCDMA Band V, Middle channel (Body Back Side)

Product Description: Mobile Phone

Model: s5007

Test Date: July 8th, 2016

| | |
|-----------------------------------|----------------------------|
| Medium(liquid type) | MSL_835 |
| Frequency (MHz) | 835.0000 |
| Relative permittivity (real part) | 55.16 |
| Conductivity (S/m) | 0.96 |
| E-Field Probe | SN 27/15 EPGO262 |
| Crest factor | 1.0 |
| Conversion Factor | 1.97 |
| Sensor-Surface | 4mm |
| Area Scan | dx=8mm dy=8mm |
| Zoom Scan | 5x5x7,dx=8mm dy=8mm dz=5mm |
| Variation (%) | -0.220000 |
| SAR 10g (W/Kg) | 0.227683 |
| SAR 1g (W/Kg) | 0.430107 |

SURFACE SAR

VOLUME SAR

