

FIGURE 1  
LED LCD TV (M/N: 55H7B)  
COVER REMOVED

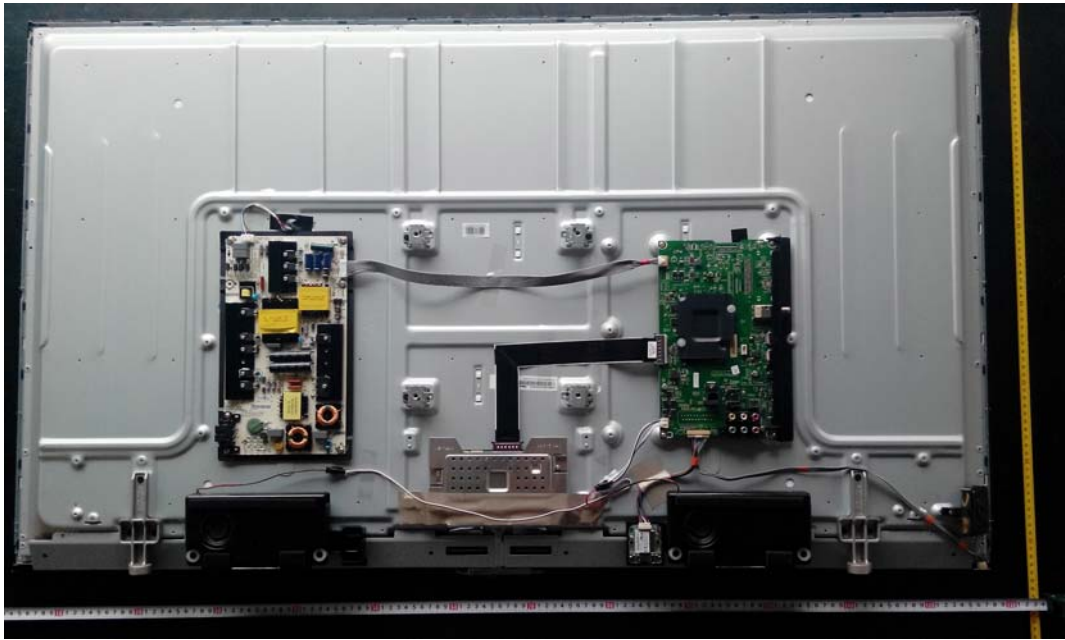


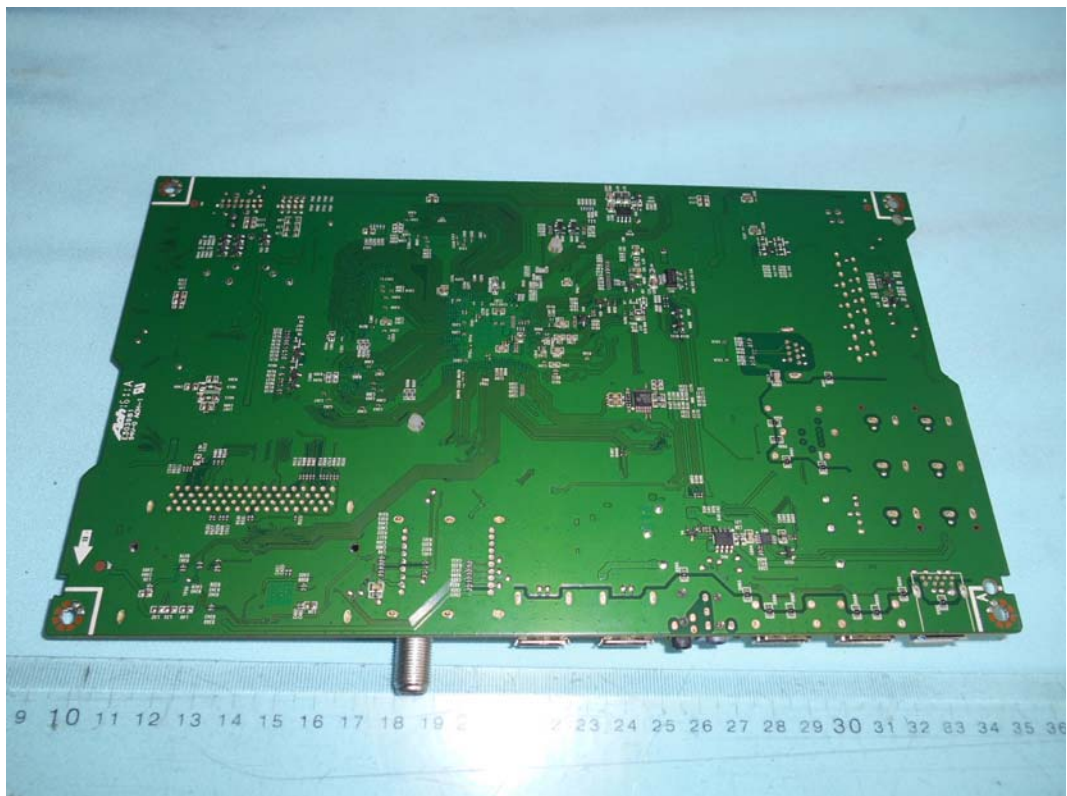
FIGURE 2  
LED LCD TV (M/N: 55H7B)  
LCD PANEL LABEL



*FIGURE 3*  
*LED LCD TV (M/N: 55H7B)*  
*MAIN BOARD (COMPONENT SIDE)*



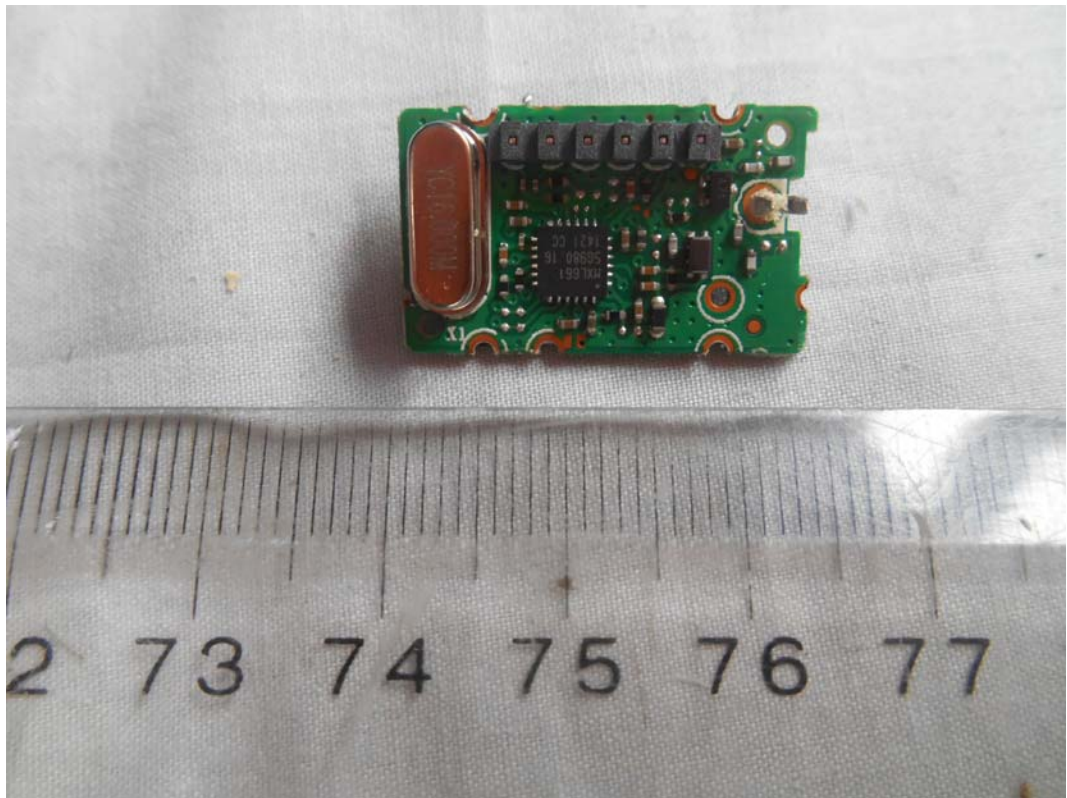
*FIGURE 4*  
*LED LCD TV (M/N: 55H7B)*  
*MAIN BOARD (SOLDERED SIDE)*







*FIGURE 7*  
*LED LCD TV (M/N: 55H7B)*  
*TUNER BOARD (COMPONENT SIDE)*



*FIGURE 8*  
*LED LCD TV (M/N: 55H7B)*  
*TUNER BOARD (SOLDERED SIDE)*

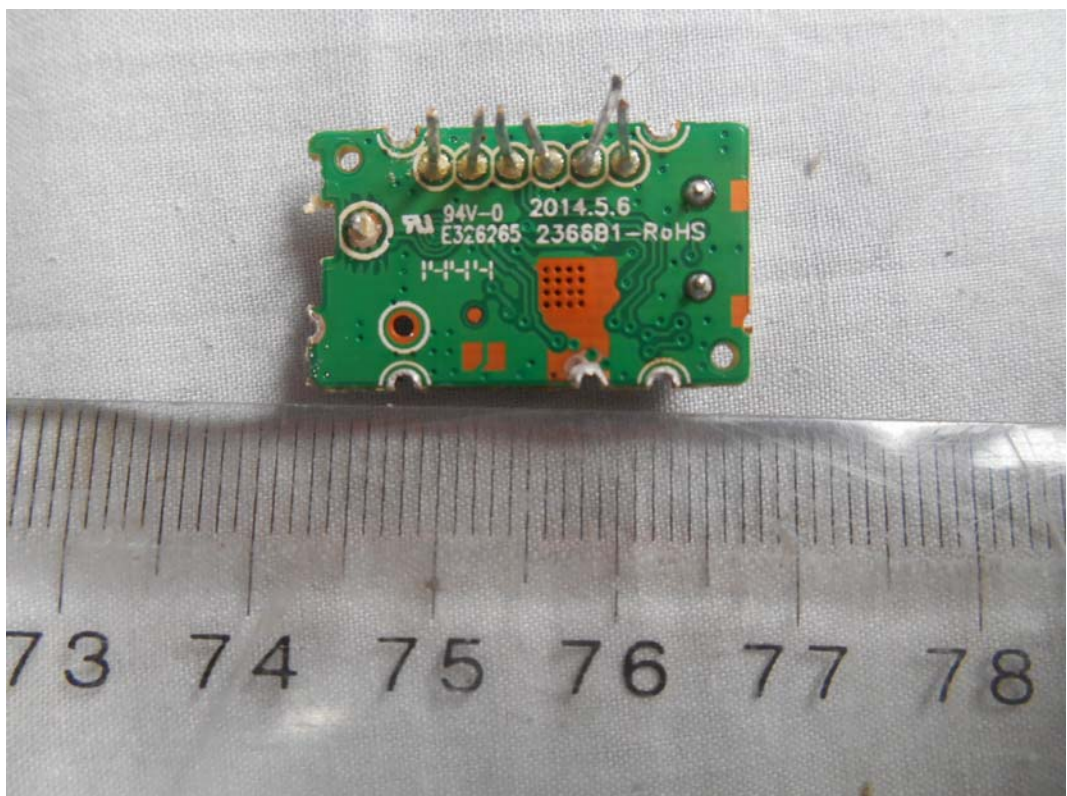




FIGURE 9  
LED LCD TV (M/N: 55H7B)  
RF BOARD (COMPONENT SIDE)



FIGURE 10  
LED LCD TV (M/N: 55H7B)  
RF BOARD (SOLDERED SIDE)

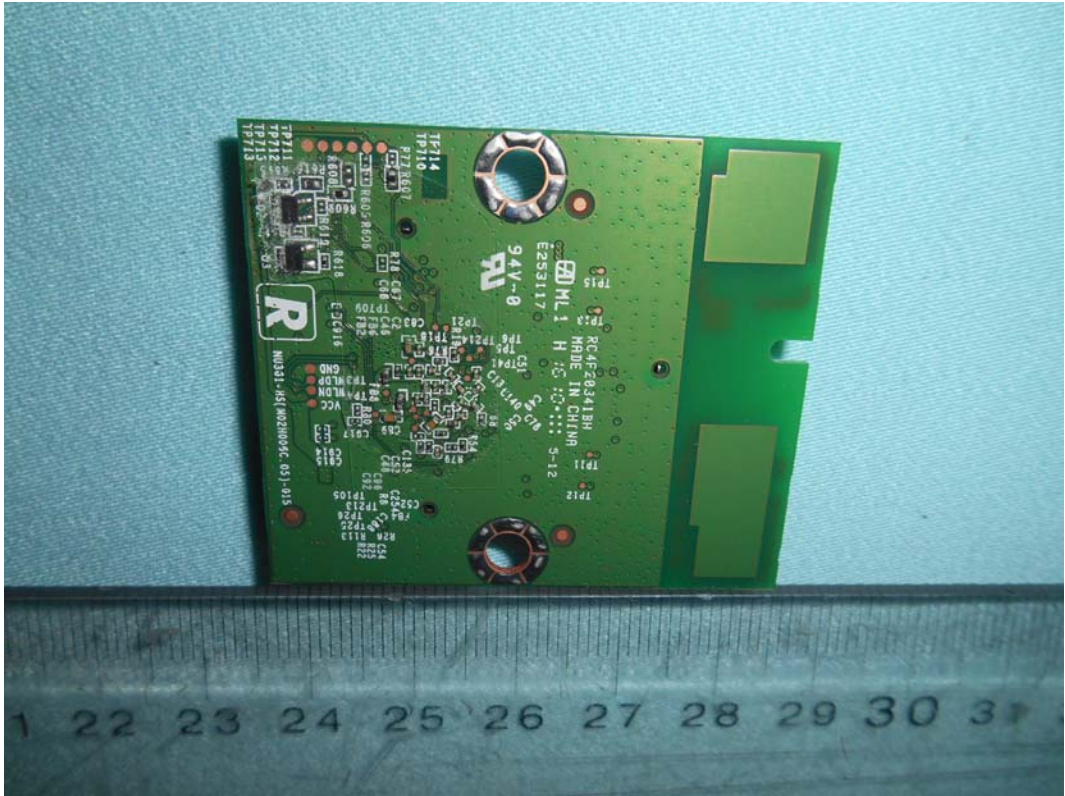


FIGURE 11  
LED LCD TV (M/N: 55H7B)  
CHIP & CRYSTAL ON RF BOARD

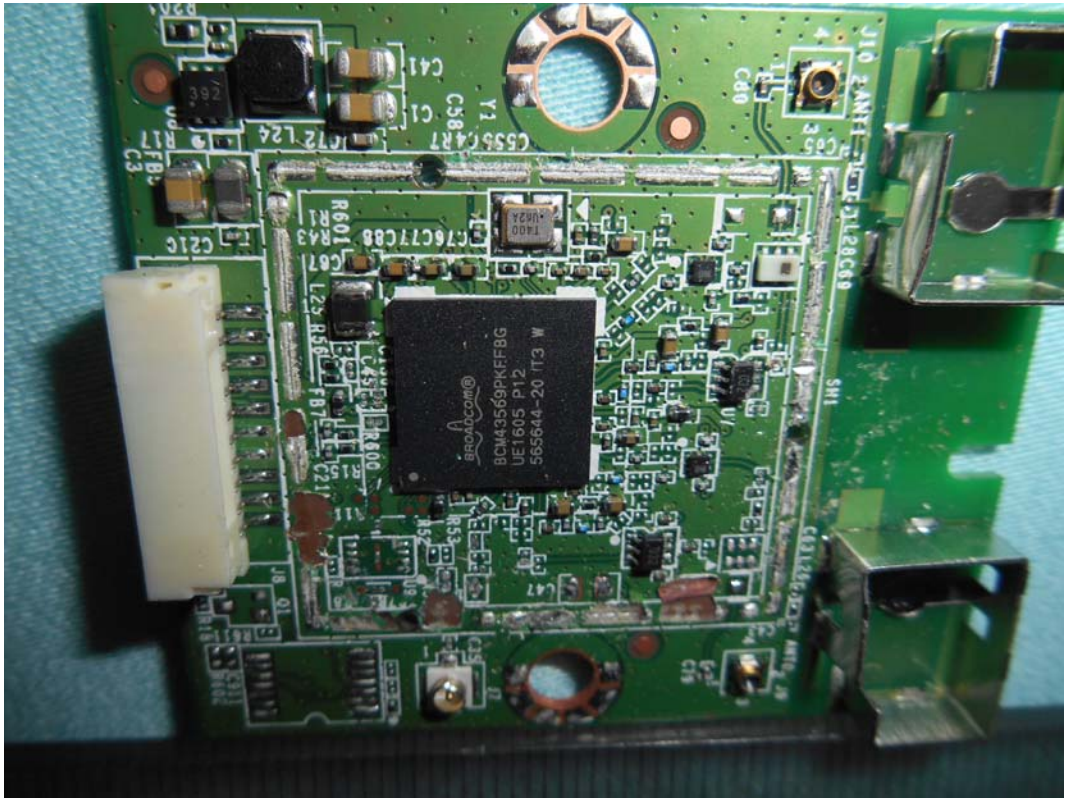


FIGURE 12  
LED LCD TV (M/N: 55H7B)  
RF BOARD LABEL





FIGURE 13  
LED LCD TV (M/N: 55H7B)  
DEBUG #1

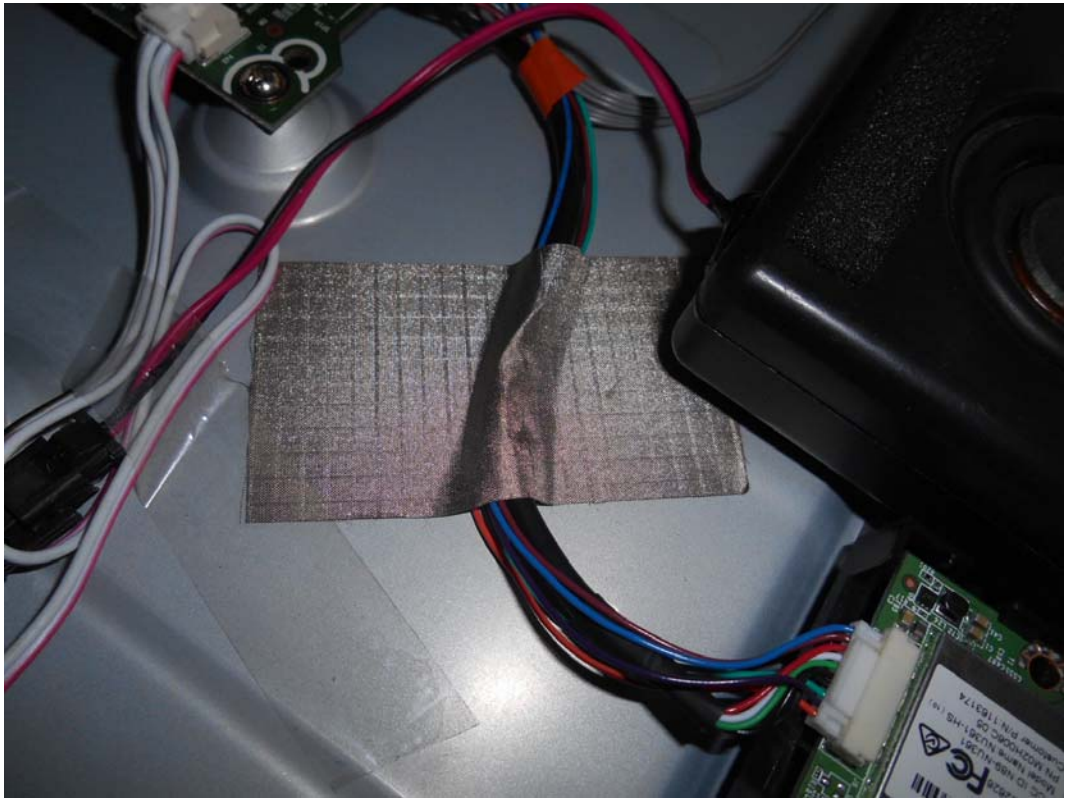


FIGURE 14  
LED LCD TV (M/N: 55H7B)  
DEBUG #2

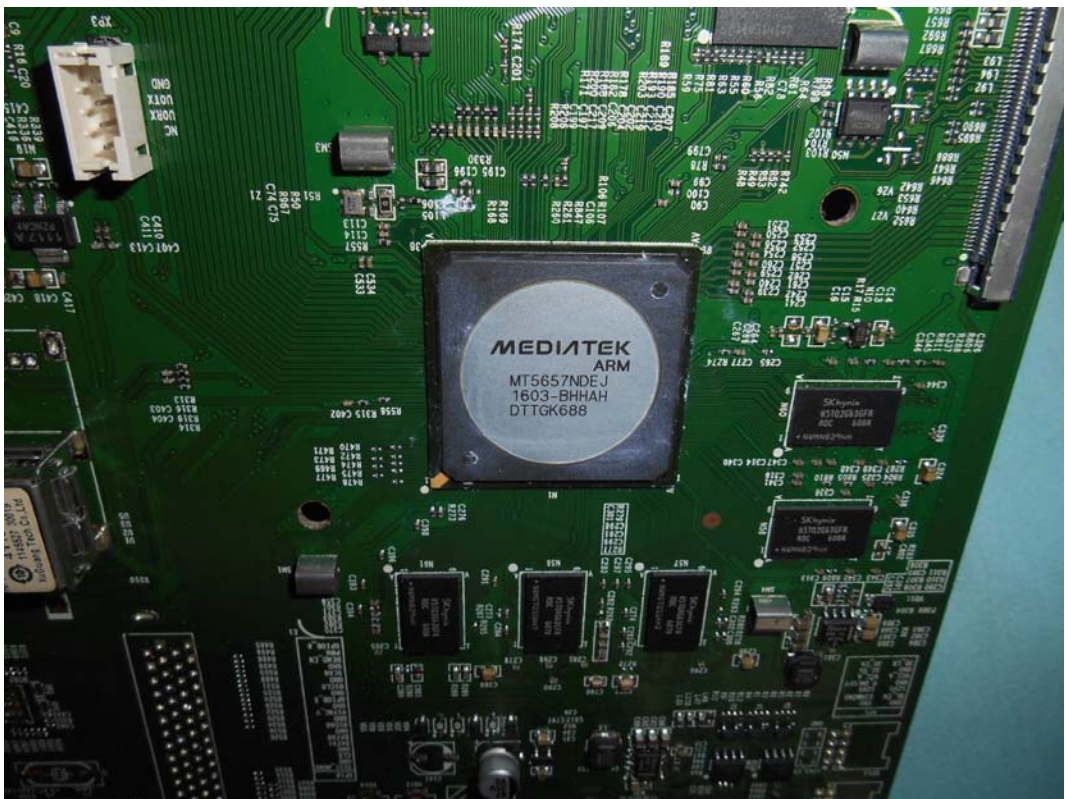


FIGURE 15  
LED LCD TV (M/N: 55H7B)  
DEBUG #3

