

*FIGURE 1*  
*LED LCD TV (M/N: 55H4G)*  
*COVER REMOVED*



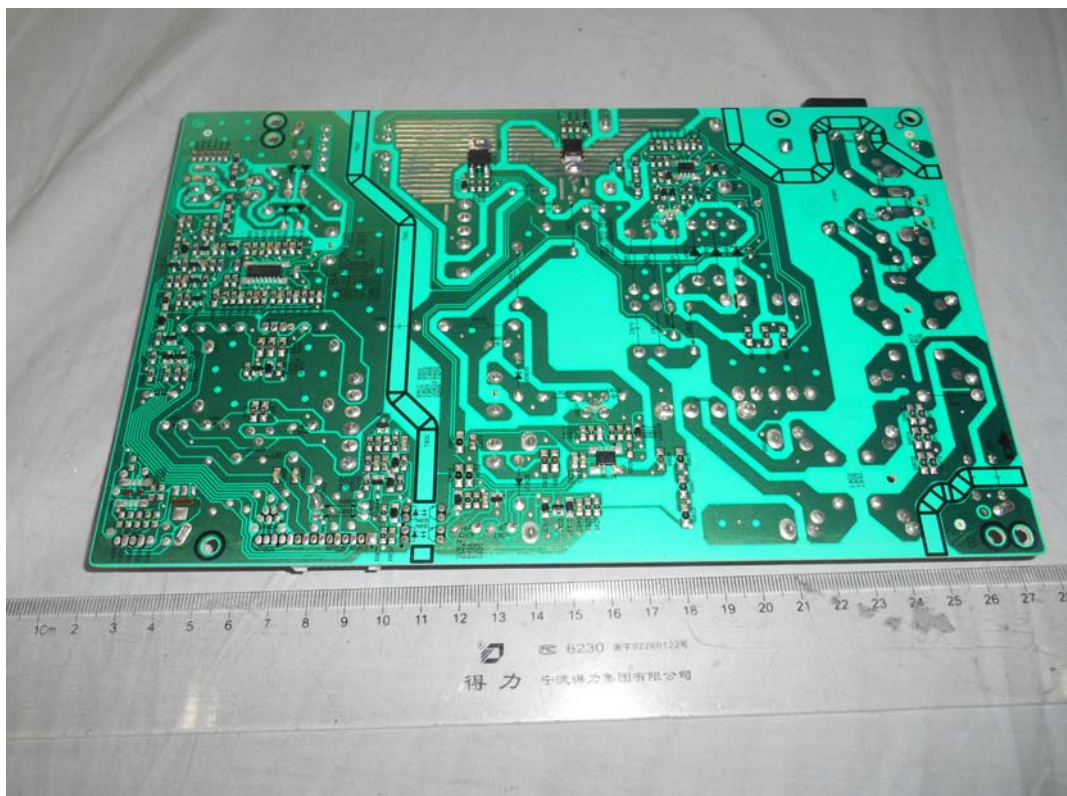
*FIGURE 2*  
*LED LCD TV (M/N: 55H4G)*  
*LCD PANEL LABEL*



*FIGURE 3*  
*LED LCD TV (M/N: 55H4G)*  
*POWER BOARD (COMPONENT SIDE)*



*FIGURE 4*  
*LED LCD TV (M/N: 55H4G)*  
*POWER BOARD (SOLDERED SIDE)*



*FIGURE 5*  
*LED LCD TV (M/N: 55H4G)*  
*MAIN BOARD (COMPONENT SIDE)*



*FIGURE 6*  
*LED LCD TV (M/N: 55H4G)*  
*MAIN BOARD (SOLDERED SIDE)*

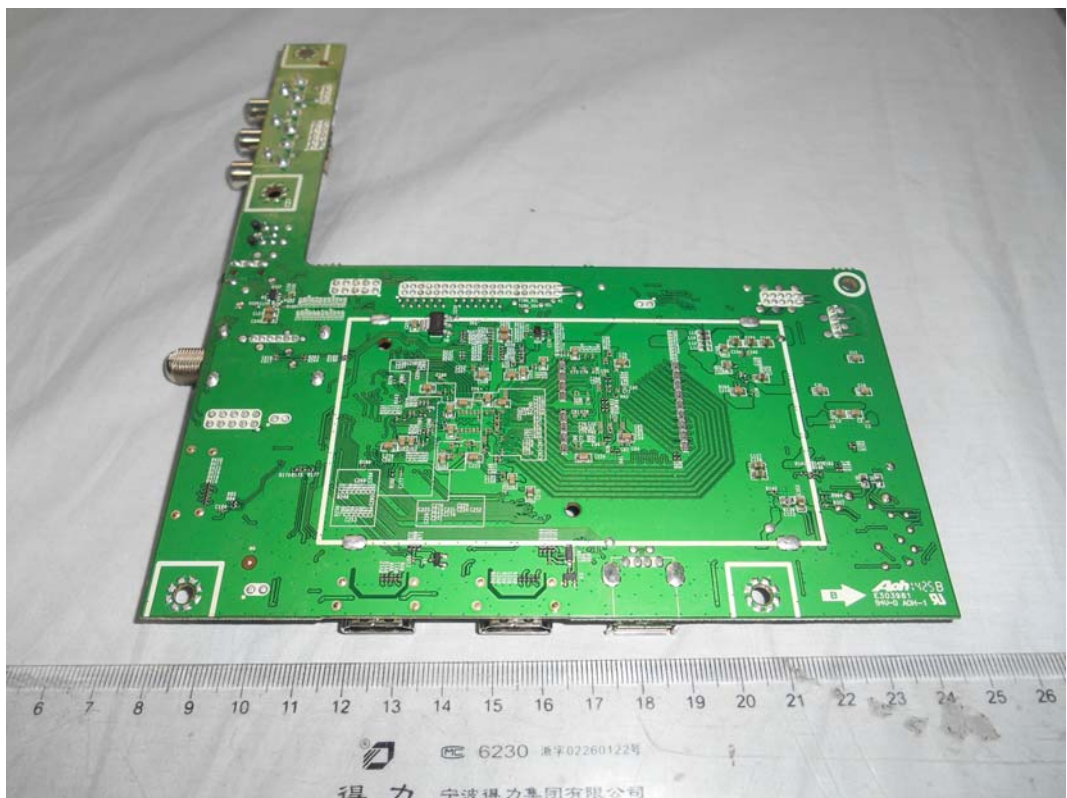


FIGURE 7  
LED LCD TV(M/N: 55H4G)  
CHIP ON MAIN BOARD

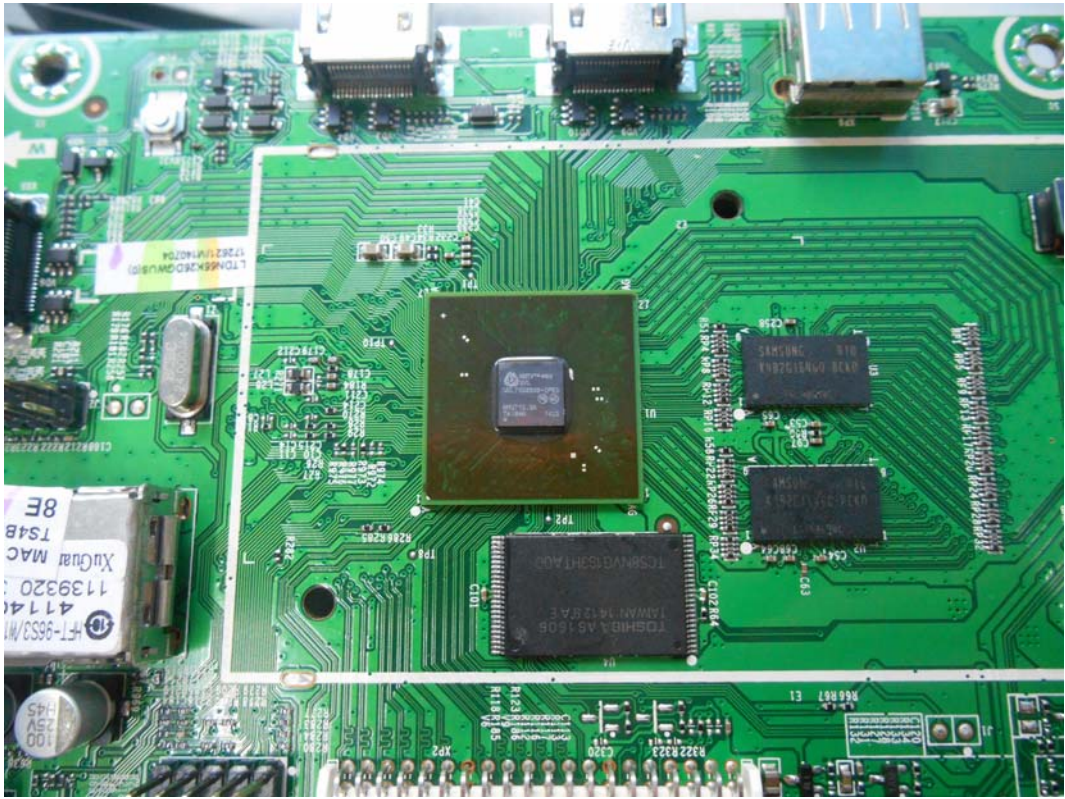


FIGURE 8  
LED LCD TV(M/N: 55H4G)  
CRYSTAL ON MAIN BOARD

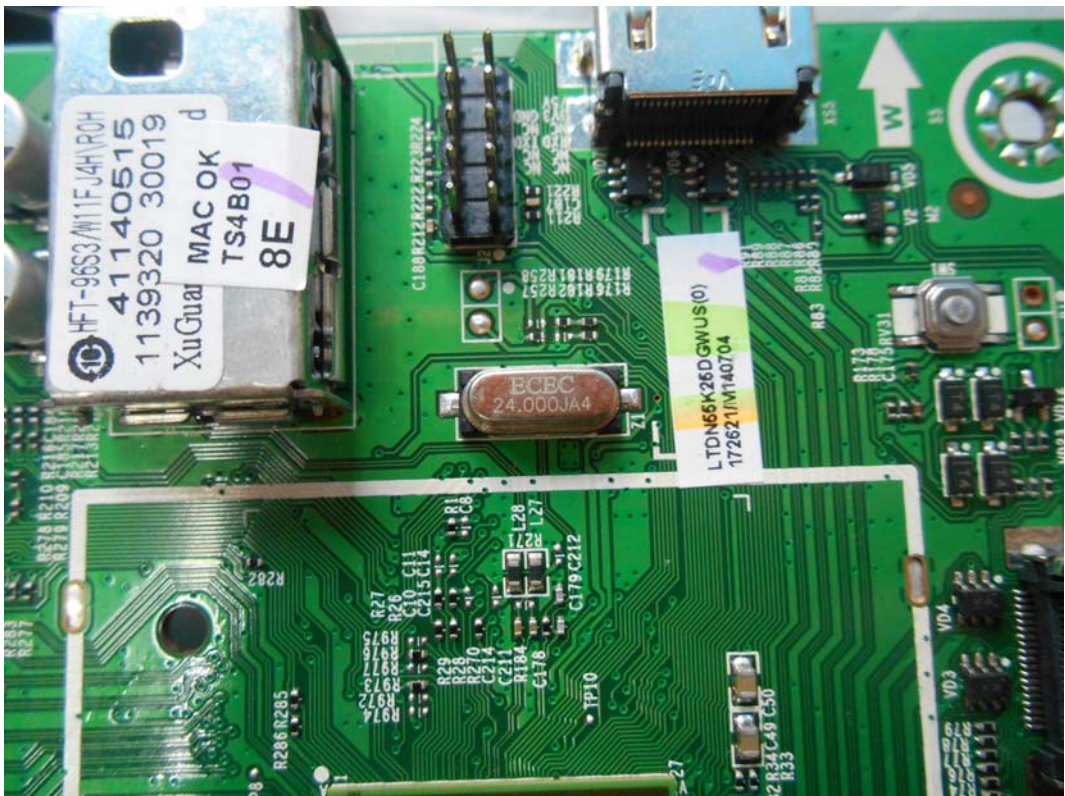


FIGURE 9  
LED LCD TV (M/N: 55H4G)  
TUNER ON MAIN BOARD



FIGURE 10  
LED LCD TV (M/N: 55H4G)  
TUNER BOARD

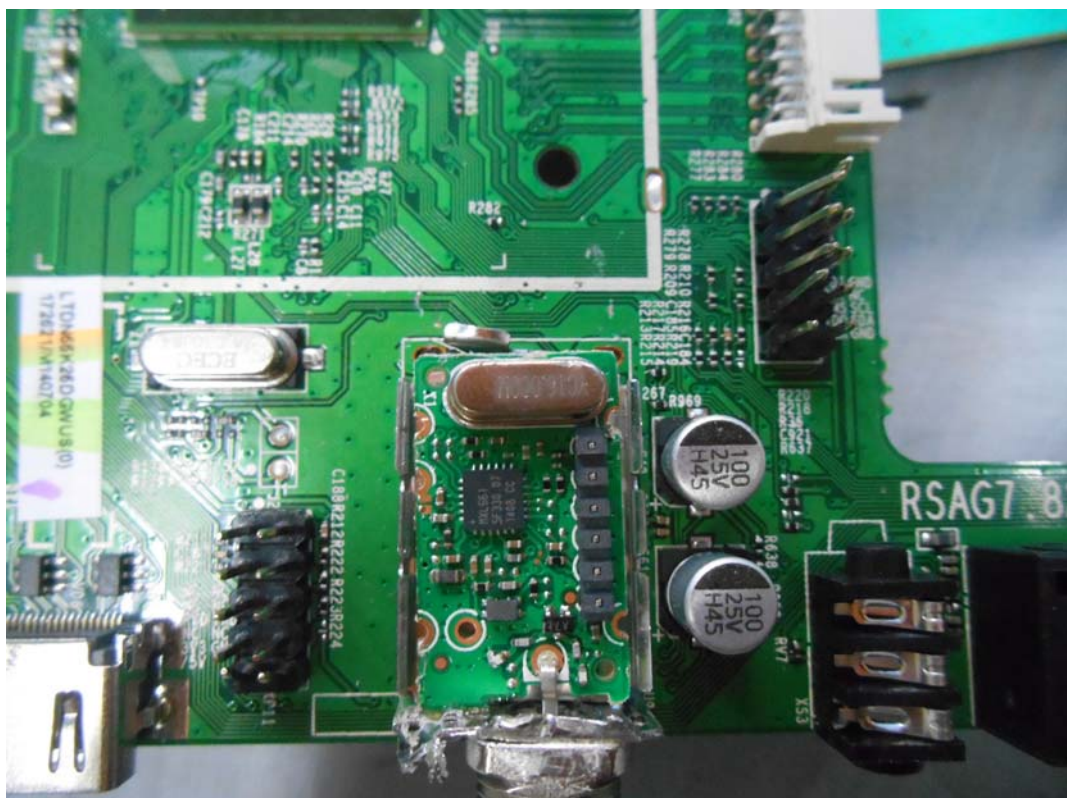


FIGURE 11  
LED LCD TV (M/N: 55H4G)  
KEY BOARD (COMPONENT SIDE)



FIGURE 12  
LED LCD TV (M/N: 55H4G)  
KEY BOARD (SOLDERED SIDE)



FIGURE 13  
LED LCD TV (M/N: 55H4G)  
LCD BOARD (COMPONENT SIDE)



FIGURE 14  
LED LCD TV (M/N: 55H4G)  
LCD BOARD (SOLDERED SIDE)

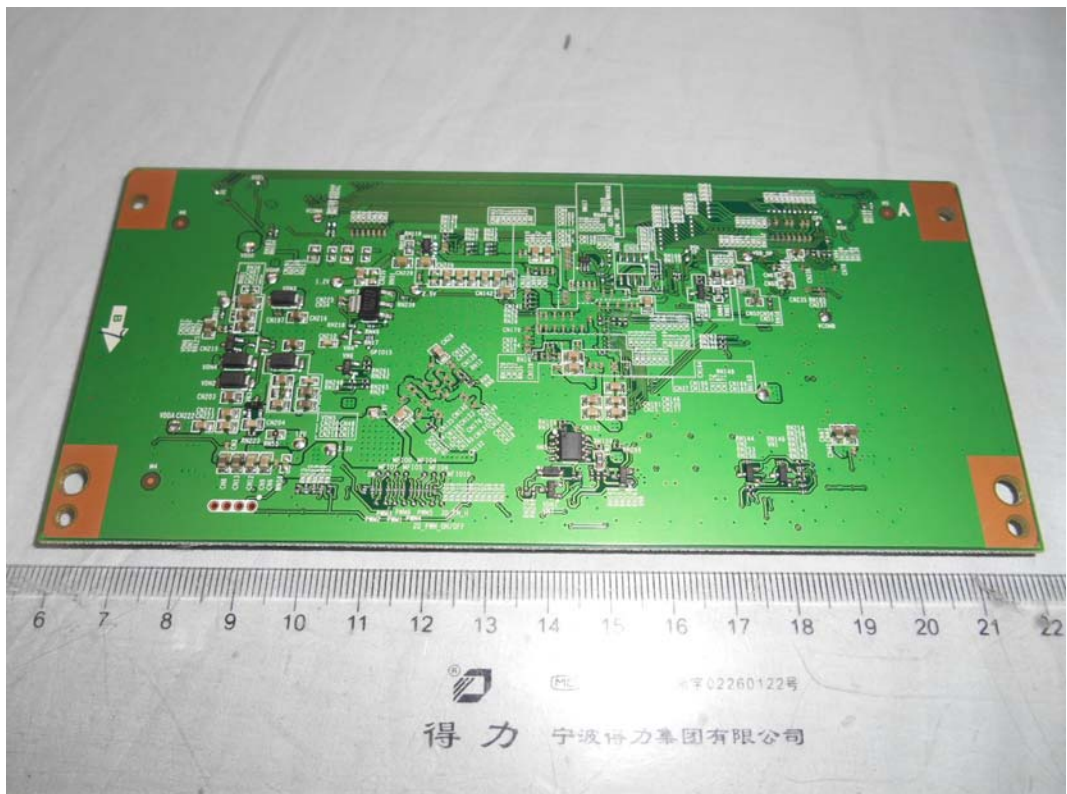


FIGURE 15  
LED LCD TV (M/N: 55H4G)  
CRYSTAL ON LCD BOARD

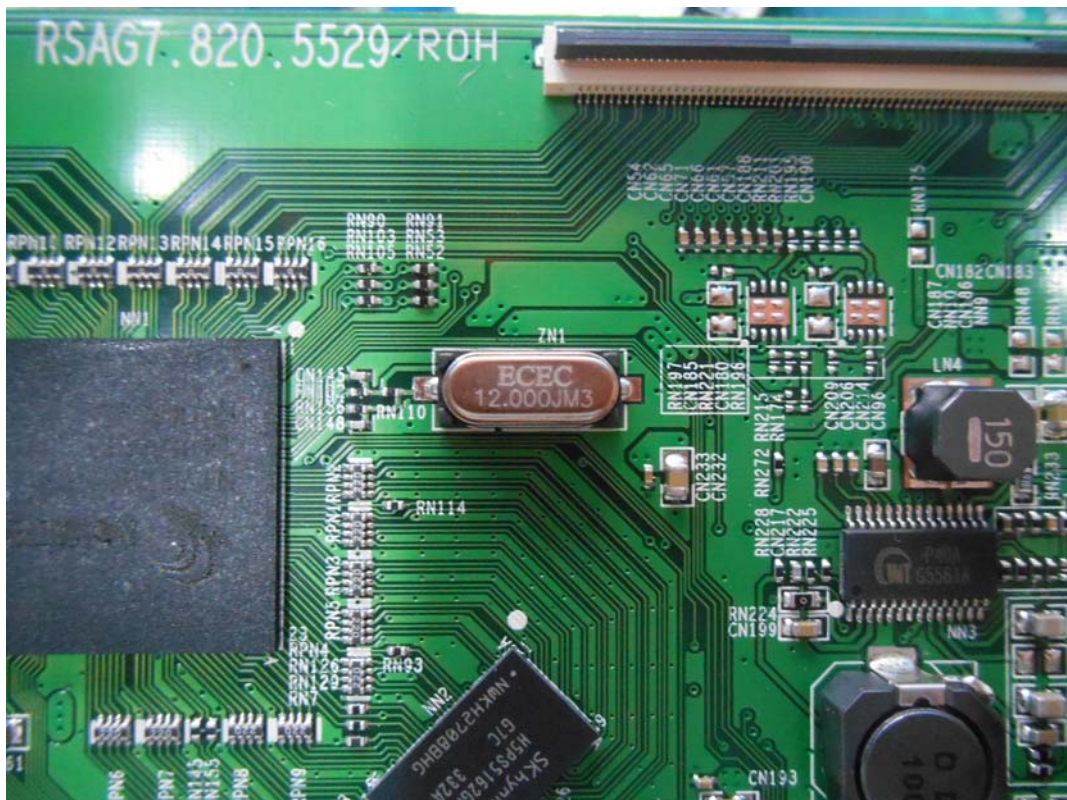


FIGURE 16  
LED LCD TV (M/N: 55H4G)  
RF BOARD (COMPONENT SIDE)





FIGURE 17  
LED LCD TV (M/N: 55H4G)  
RF BOARD (SOLDERED SIDE)

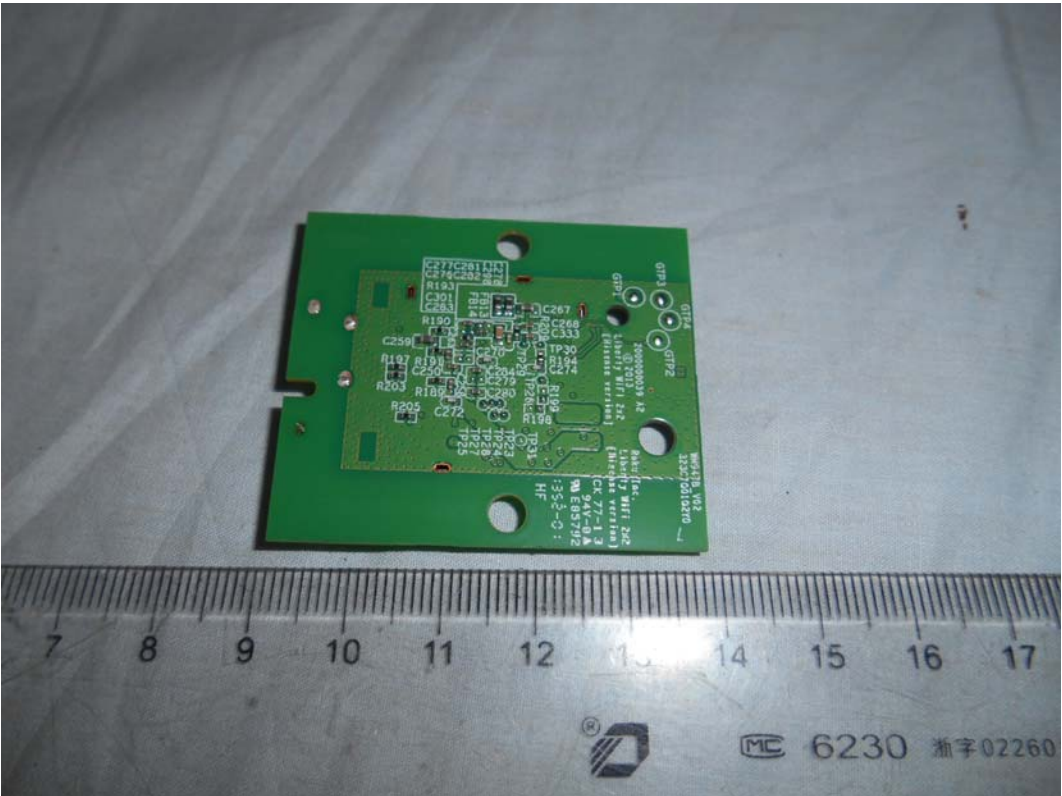


FIGURE 18  
LED LCD TV (M/N: 55H4G)  
DEBUG

