

Product specification

This product is TCL TV remote control (IR+BT), the device under test is powered by 2*AAA battery. And directly use the TV connection Bluetooth operation. The 3V battery powers the Bluetooth Chip RTL8762EJF, and the Bluetooth chips are only different labels, and the rest exactly the same. This module uses a PCB antenna with a crystal frequency of 40MHz.

Product Name: Remote Controller

Model name: RC923A

Crystal frequency value: 40MHz

Number of keys: 26

Battery : 2 x AAA

BT Features:

Operating frequency range: 2402-2480MHz

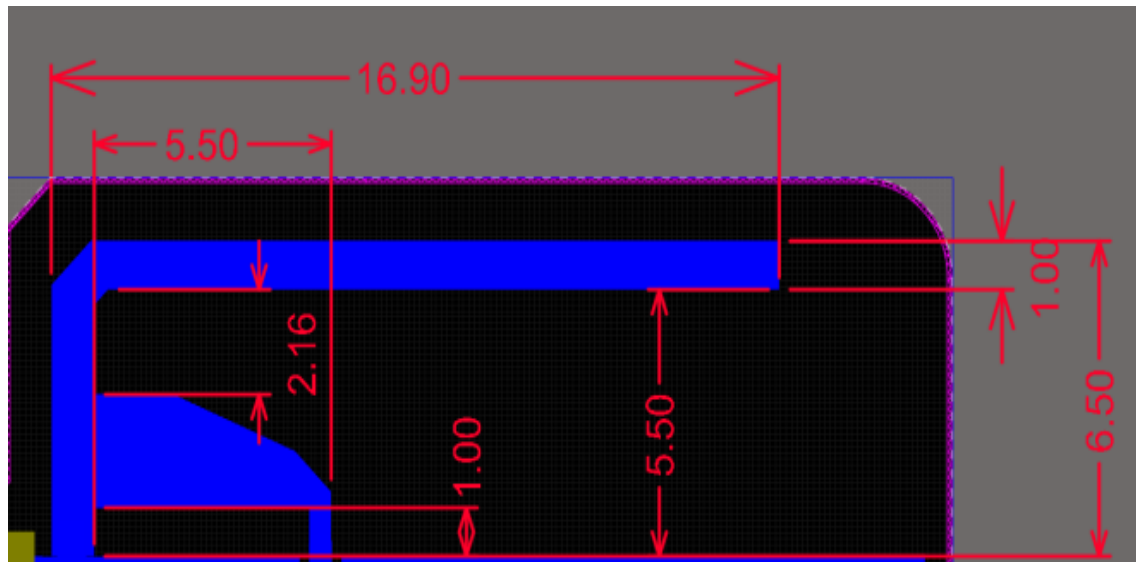
Number of channels: 40CH

Modulation type: GFSK

Supported transmission rate: LE 1M/2M

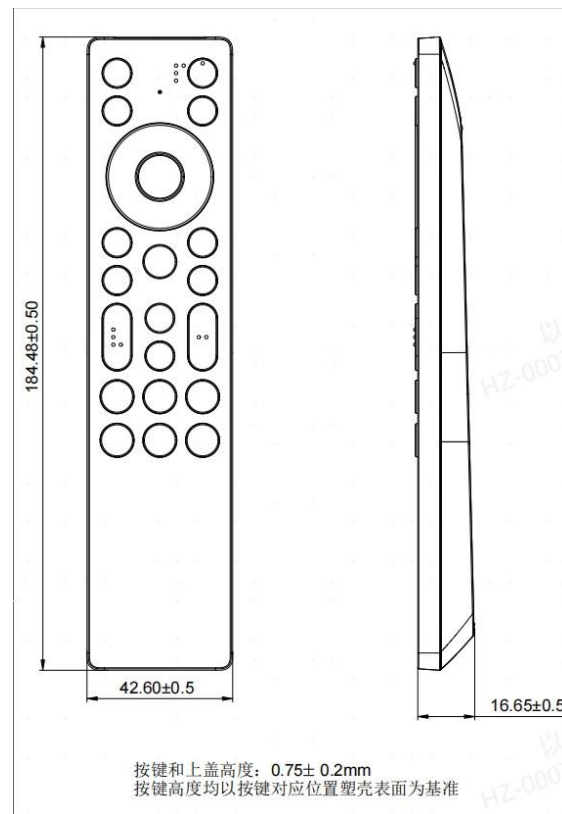
Antenna type: PCB antenna

Antenna size:



Unit: mm

Product dimension drawing



Common items

work envirimt: 0°C to 45°C , 20 to 85%RH, 86 to 106Kpa

storage temperature: -10°C to 60°C

NOTICE

FCC Notice:

The device complies with the FCC rules, Part 15. Operation is subject to the following two conditions:

1. This device may not cause harmful interference, and
2. This device must accept any interference received, including interference that may cause undesired operation. Changes or modifications not expressly approved by the party responsible for compliance could void the user's authority to operate the equipment.

This equipment has been tested and found to comply with the limits for a Class B digital device, pursuant to part 15 of the FCC Rules. These limits are designed to provide reasonable protection against harmful interference in a residential installation. This equipment generates, uses and can radiate radio frequency energy and, if not installed and

used in accordance with the instruction manual, may cause harmful interference to radio communications.

However, there is no guarantee that interference will not occur in a particular installation. If this equipment does cause harmful interference to radio or television reception, which can be determined by turning the equipment off and on, the user is encouraged to try to correct the interference by one or more of the following measures:

1. Reorient or relocate the receiving antenna.
2. Increase the separation between equipment and receiver.
3. Connect the equipment into an outlet on a circuit different from that to which the receiver is connected.
4. Consult the dealer or an experienced radio/TV technician for help.

FCC Radiation Exposure Statement:

The equipment complies with FCC radiation exposure limits set forth for an uncontrolled environment.

The equipment can be used in portable exposure condition without restriction.

ISED Notice:

This device contains licence-exempt transmitter(s)/receiver(s) that comply with Innovation, Science and Economic Development Canada's licence-exempt RSS(s). Operation is subject to the following two conditions:

- (1) This device may not cause interference.
- (2) This device must accept any interference, including interference that may cause undesired operation of the device.

L'émetteur/récepteur exempt de licence contenu dans le présent appareil est conforme aux CNR d'Innovation, Sciences et Développement économique Canada applicables aux appareils radio exempts de licence.

L'exploitation est autorisée aux deux conditions suivantes :

- (1) L'appareil ne doit pas produire de brouillage;
- (2) L'appareil doit accepter tout brouillage radioélectrique subi, même si le brouillage est susceptible d'en compromettre le fonctionnement.

IC Radiation Exposure Statement:

This equipment complies with ISED radiation exposure limits set forth for an uncontrolled environment. The equipment can be used in portable exposure condition without restriction.

Cet équipement est conforme aux limites d'exposition au rayonnement d'ISD établies pour un environnement non contrôlé. L'équipement peut être utilisé en état d'exposition portable sans restriction.