

Introduction

Thank you for choosing Rosewill's 802.11n Wireless Dual Band USB adapter – RNX-N600UBE. This chapter is to introduce you more about this Wireless Adapter.

1.1 Package Content

Before getting started, please verify that your package includes the following items:

1. Rosewill RNX-N600UBE 802.11n Wireless Dual Band USB Adapter x 1
2. External 4dBi Dual Band Antenna x 2
3. Quick Installation Guide x 1
4. USB Cable x1
5. Resource CD x 1, including:
 - Wireless Utility and Driver
 - User Manual

Note:

Make sure that the package contains the above items. If any of the listed items are damaged or missing, please contact with your distributor.

1.2 Overview of the Product

With the 802.11n 2T2R MIMO technology, the RNX-N600UBE allows high packet throughput rate up to 300Mbps maximum download and upload. It can also interoperate with other wireless (802.11b, 802.11g, 802.11a) standard and support dual frequency at 2.4GHz and 5GHZ. The adapter supports 64/128/152 bit WEP, WPA and WPA2 encryptions to prevent outside intrusion and protect your personal information from being exposed.

The adapter is easy to install and manage. The Quick Setup guides you step-by-step through the installation process; With unmatched wireless performance, reception, and security protection, the RNX-N600UBE is the best choice for easily adding or upgrading wireless connectivity to your notebook and computer.

1.3 Features

- Complies with IEEE 802.11n and 802.11a/b/g standard for 2.4GHz/5GHz Wireless LAN
- 2T2R up to 300 Mbps upload and download Transfer Rate in 802.11n mode of operation
- High level of security with Wireless encryption of 64/128-bit WEP, WPA, WPA2, and Cisco CCX V5 Compliance.

- Runs under most operating systems: Windows 2K/XP/Vista/7 (32/64 bits), Mac OSX 10.4~10.6 and Linux 2.6.x.
- Supports One-Click WPS (WiFi Protected Setup) connection.
- Supports MIMO Power Saving which reduce power under idle time

1.4 Product Specification

Chipset	Ralink RT5572N
Standard	IEEE 802.11a/b/g/n
Modulation Type	OFDM/CCK/16-QAM/64-QAM
Bus Type	USB Interface (Mini 5pin)
Frequency Band	2.4GHz / 5GHz DUAL
Data Rate	11n: 300/150/108/81/54/27 Mbps 11b: 1,2,5.5,11 Mbps 11g: 6,9,12,24,36,48,54 Mbps, 135/121.5/108/81/54/40.5/27/13.5Mbps, 130/117/104/78/52/39/26/13 Mbps, 65/58.5/52/39/26/19.5/13/6.5 Mbps 11a: 6,9,12,24,36,48,54 Mbps, 135/121.5/108/81/54/40.5/27/13.5Mbps, 130/117/104/78/52/39/26/13 Mbps, 65/58.5/52/39/26/19.5/13/6.5 Mbps
Max. EIRP Output Power	2.4GHz band: 9.0 mW Max 5.2GHz band: 6.8mW Max ; 5.8GHz Band:5.8mW
Receive Sensitivity	300M: -68 dBm@10% PER 150M: -68 dBm@10% PER 130M: -68 dBm@10% PER 108M: -68 dBm@10% PER 54M: -68 dBm@10% PER 11M: -85 dBm@ 8% PER 6M: -88 dBm@10% PER 1M: -90 dBm@8% PER
Security	64/128/152 bit WEP, WPA/WPA2, WPA-PSK/WPA2-PSK (TKIP/AES); WPS button; Cisco CCX5.0
Antenna	2x External 4dBi Dual Band Antenna (SMA Connector)
OS support	Windows 200; Windows XP/Vista/7 32 and 64 bit; Linux Kernel 2.6.x; Mac OS X 10.4, 10.5, and 10.6
Dimension	3.54" x 2.16" x 0.47" (90 x 55 x 12 mm)
Temperature	Operating: 32~104°F (0~40°C); Storage: -40~158°F (-40~70°C)

Humidity	Operating: 10~90% (Non-Condensing); Storage: Max. 95% (Non-Condensing)
----------	--

1.5 System Requirement

You must have at least the following

- A laptop computer/desktop PC with an available USB port
- At least a 300MHz processor and 32MB of memory
- Windows OS for Win98SE, ME, 2000, XP, Vista, 7 or Mac OS X 10.4~10.6
- A CD-ROM Drive
- USB controller properly installed and working in the computer
- A 802.11n \ 802.11g or 802.11a/b Wireless (and Dual Band) Access Point/Router (for infrastructure Mode) or another 802.11n \ 802.11g or 802.11b wireless (and Dual Band) adapter (for Ad-Hoc; Peer-to-Peer networking mode).

1.6 LED Status

This USB Adapter contains one LED. Please refer to the following description for LED definition.

LED Indications	Status	Working Status
Radio/ACT LED	Blink blue	The Adapter is Radio on
	Blink blue and flashing intermittently	The Adapter is already connected but is not transmitting or receiving data
	Blink blue and fast flashing	The Adapter is activity and transmitting of receiving data.
	Off	The Adapter is Radio off

Installation Guide

2.1 Hardware Installation

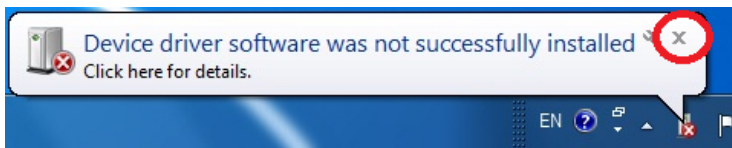
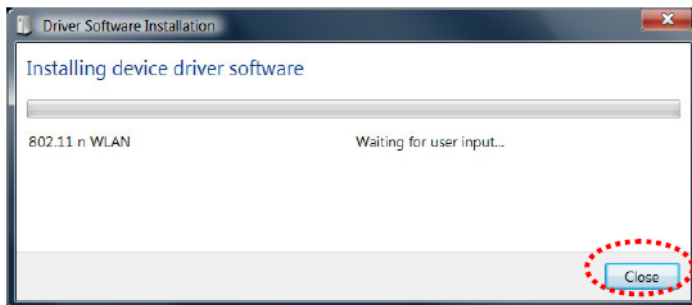
- Please first connect the RNX-N600UBE with the USB cable, then insert into your PC or NB USB slot.



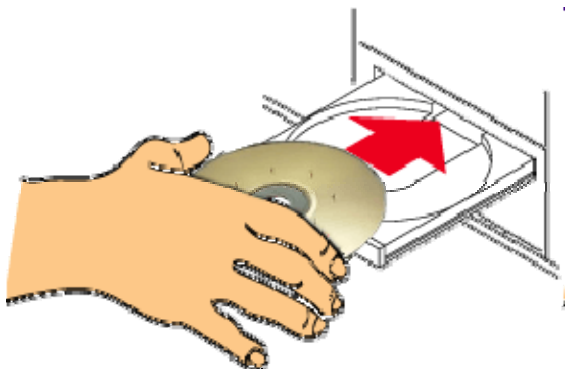
- If the following window popup, please click Cancel or Close:
 - Under Win XP



- Under Windows Vista/Win7



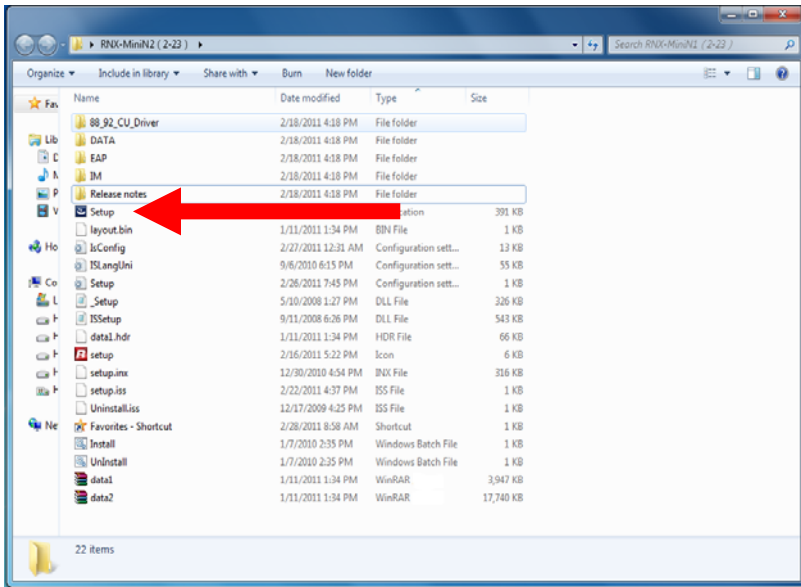
2.2 Installing Drivers and/or Utility :



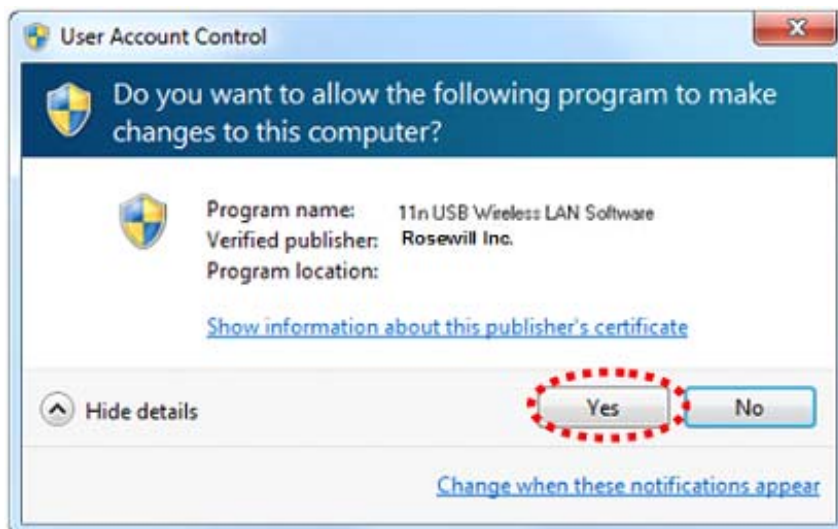
Please insert the CD into your CD-rom drive



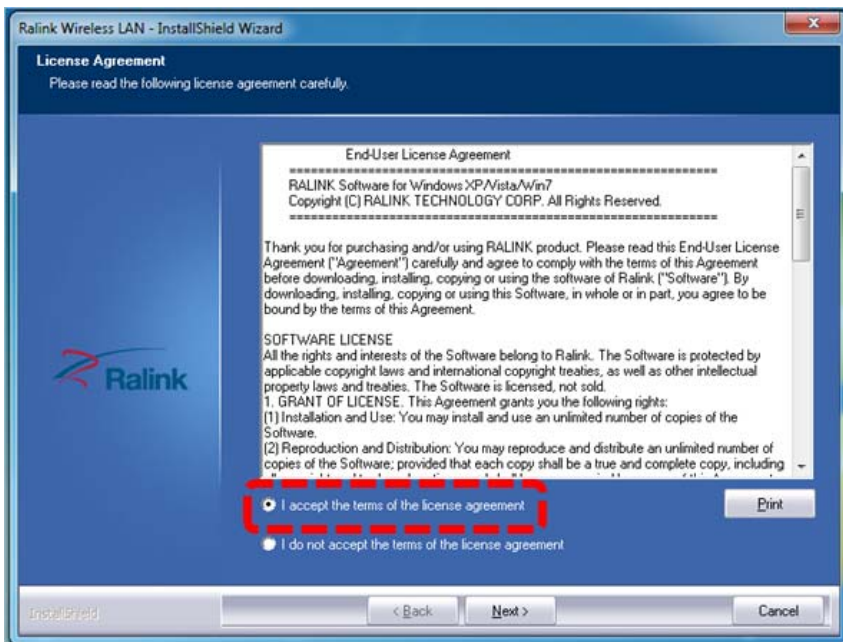
Click on the “**Driver Installation**” option when the Smart Wizard page popup.



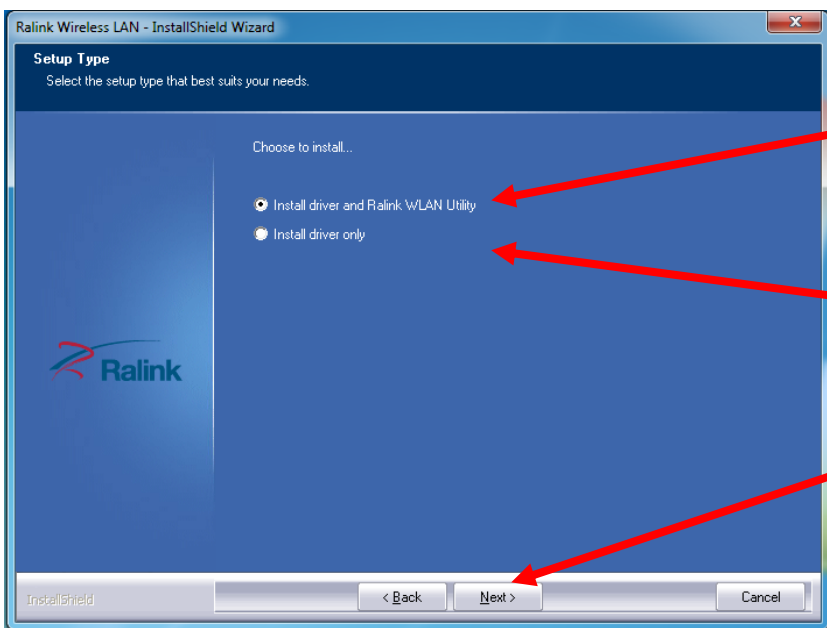
If the program didn't run automatically, please select **Browse CD**, and then double click on the **Setup.exe** in the CD to start the process.



Click **Yes** if the following window popup



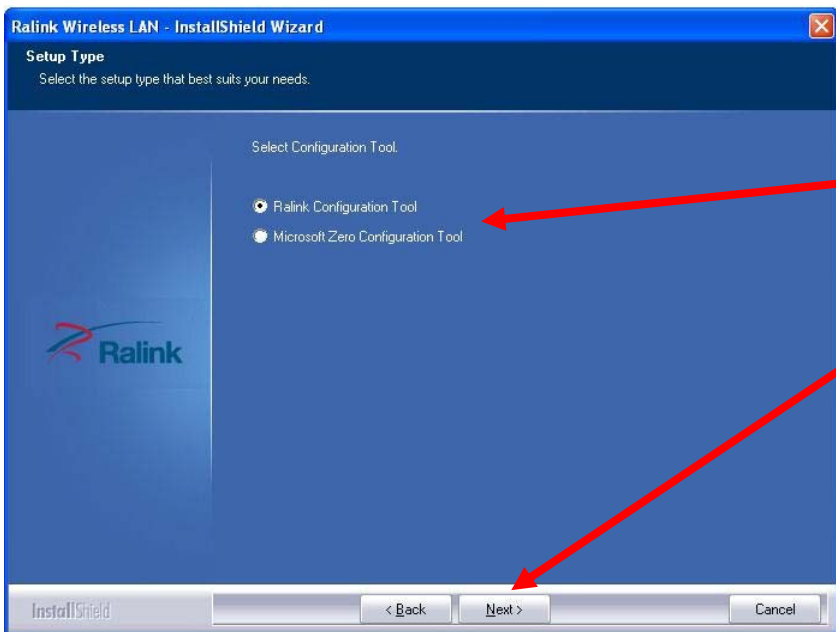
Upon Clicking **Yes**, you should see a **“License Agreement”** window popup. Please select **“I accept the terms of the license agreement”** then click **“Next>”**



On the next window, you will have the option of **“Install driver and Ralink WLAN Utility”** or **“Install Driver only”**

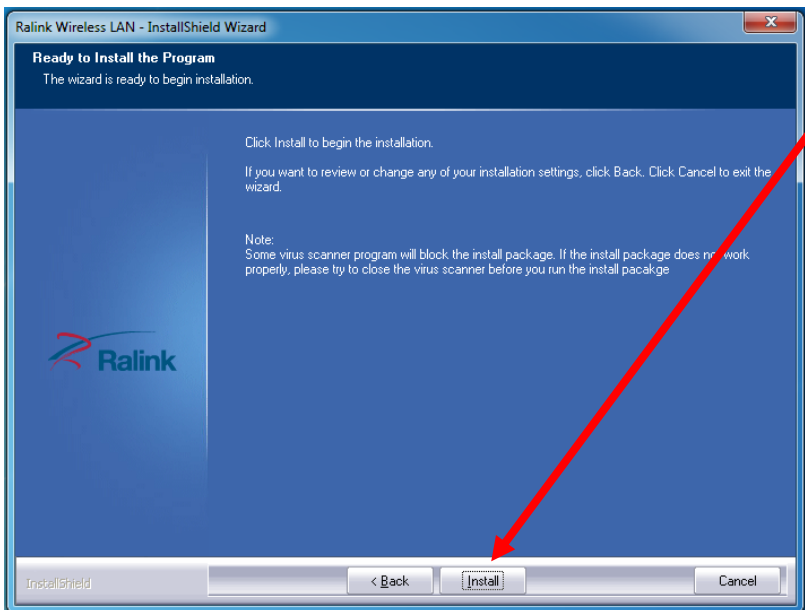
Win7 users are recommended to select **“Install Driver only”**

Please select **“Next >”** after your selection to continue the installation process.

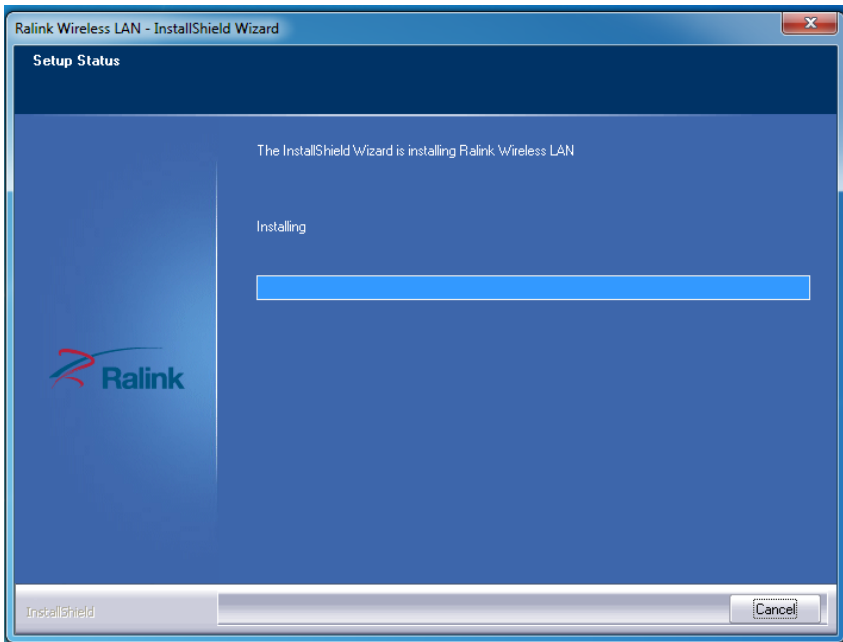


When Install under Window XP, you may see this selection window, you can select among “**Ralink Configuration Tool**” or “**Microsoft Zero Configuration Tool**”

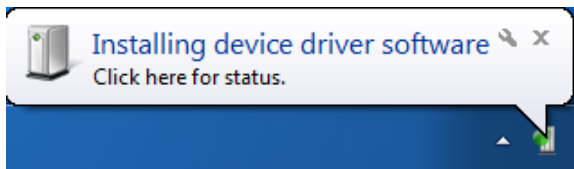
Once select, please click “**Next >**” to continue.



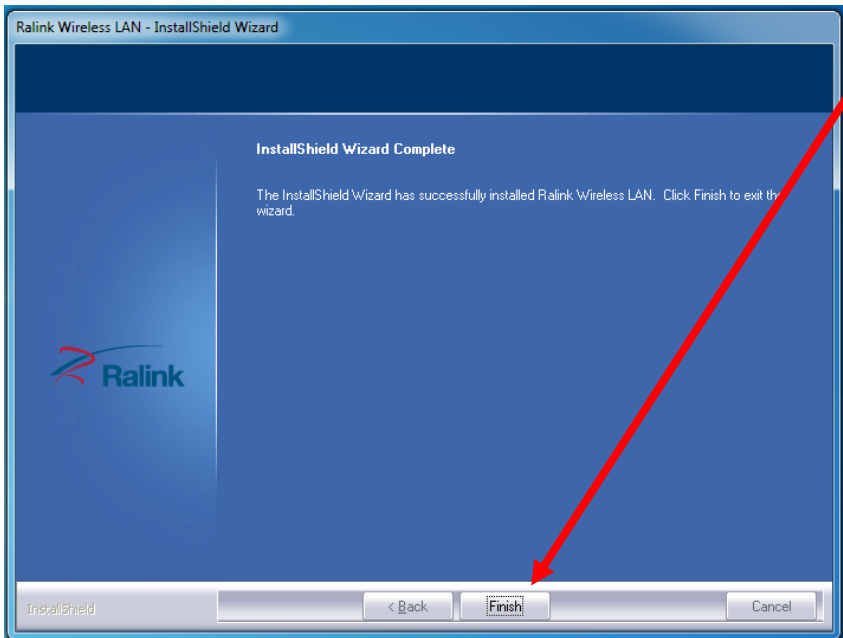
Please select “**Install**” to continue.



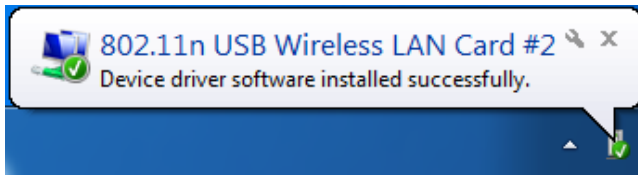
Setup wizard will process.



During the Installation process, you may see this popup on your lower right hand corner showing you the installation status.



Click **“Finish”** to complete the installation process



When complete, this window at the lower right hand corner will pop up, thus complete the driver installation.

if you see below window popup, please select **install this driver software anyway**.

Win7



Win XP



Wireless Connection Guide


This chapter describes how to configure your Adapter for wireless connectivity on your Wireless Local Area Network (WLAN) and use the data security encryption features.

After Installing the Adapter, the Adapter's tray icon will appear in your system tray. It appears at the bottom of the screen, and shows the signal strength using color and the received signal strength indication (RSSI).

In the following instruction for making a network connection, we use the provided Utility to configure your wireless network settings.

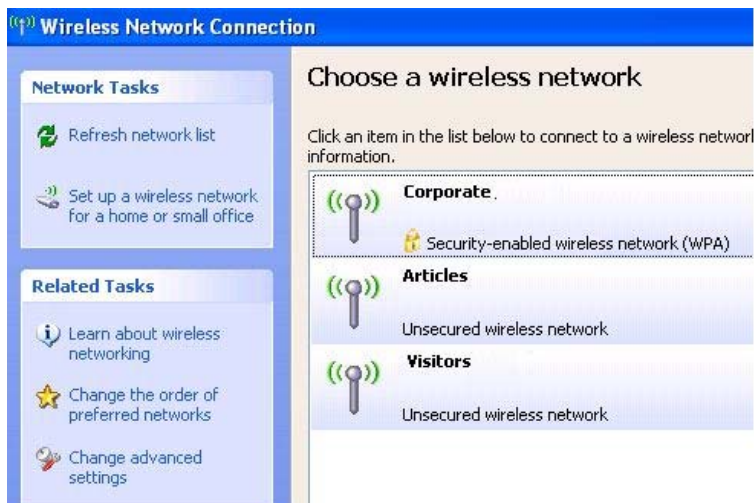
Note: You could use either the software we provide or Microsoft Zero Configuration tool to configure this adapter.

3.1 Connecting with Microsoft Zero Configuration tool (Win XP)

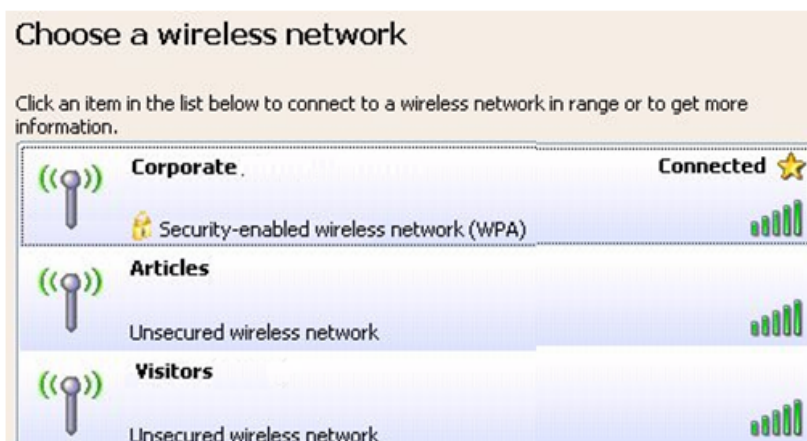
- After specifying the Microsoft Zero Configuration tool to configure your wireless network, right click on the  icon on system tray. Select "**View Available Wireless Networks**" to specify your wireless network.



- The tool shows the available wireless networks. Select your demanding network to connect with.



- If prompted, enter the password/network key for your wireless network and click the Connect button.

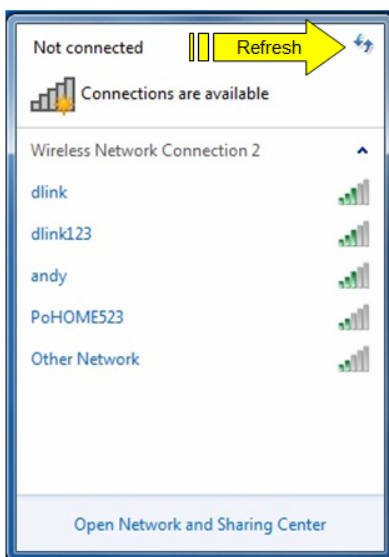


3.2 Connecting with Window 7

You can easily access to wireless with Win7. First, move your mouse to lower right hand corner as below and click on the icon where arrow pointing to.



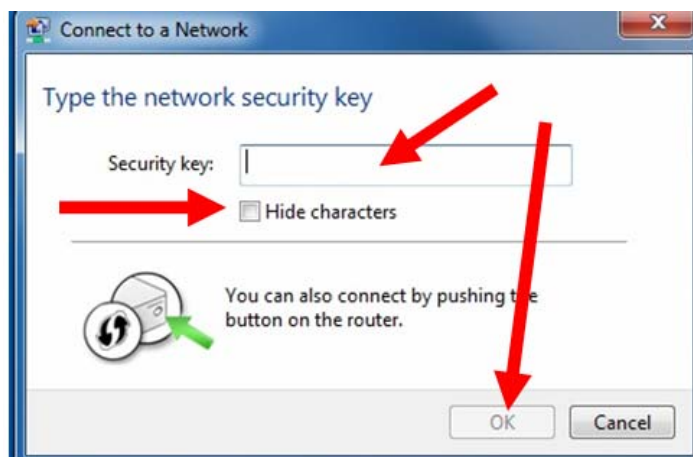
Click **Refresh** to get an update of your Wireless Network Connection. This should help you search the SSID of the network you want to connect to.



Select your desired SSID, then Click “Connect”.



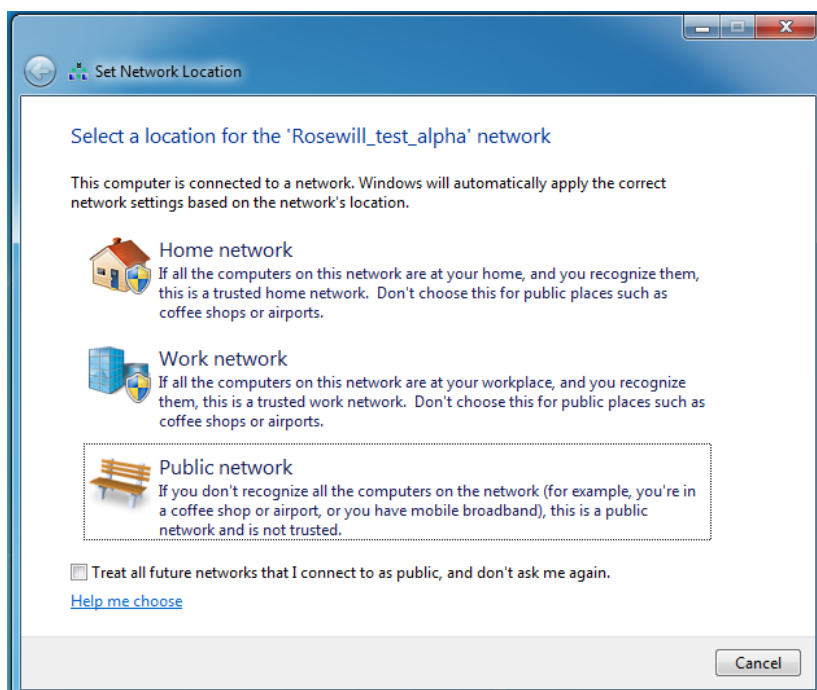
You will be prompt to ask you entering the network security key. Once entered, please click OK to complete.




You should see below in a very short period and find out whether you are connected or now.

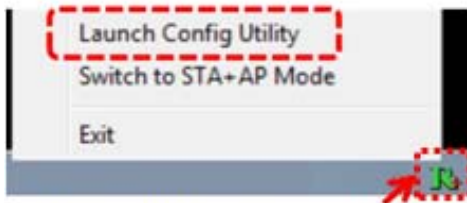


If this is your first time connect, you will see a window show up and ask you for setting up Network Location. Please select the location based on your internet usage.

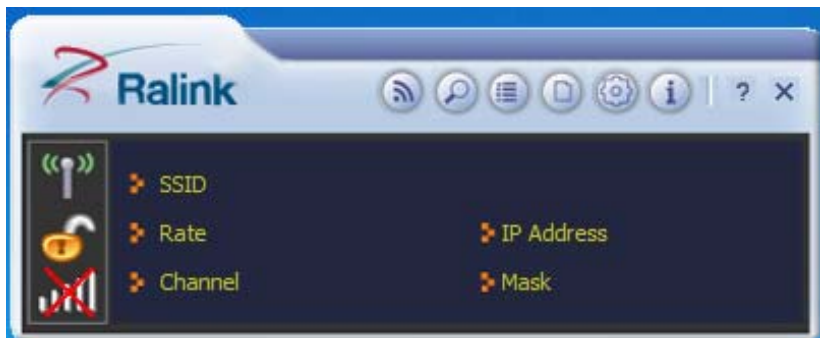


3.3 Connecting with Ralink Wireless Utility

We also provide a Ralink Wireless Utility for users to connect to a wireless network easily. It provides more information and configuration for this adapter. As default, the Utility will start automatically if you select **“Install driver and Ralink WLAN Utility”** when installing drivers. You can find this icon  and double click to start it on the lower right hand corner of your computer desktop. Or you can **right click** the tray icon and select **Launch Config Utility**.





Right Click on the "R" logo





This is the startup window of the Ralink Wireless Utility


Here is each button's function:


-  **Wi-Fi Direct**
(will appear only if your computer can support this function)

-  **Site Survey**

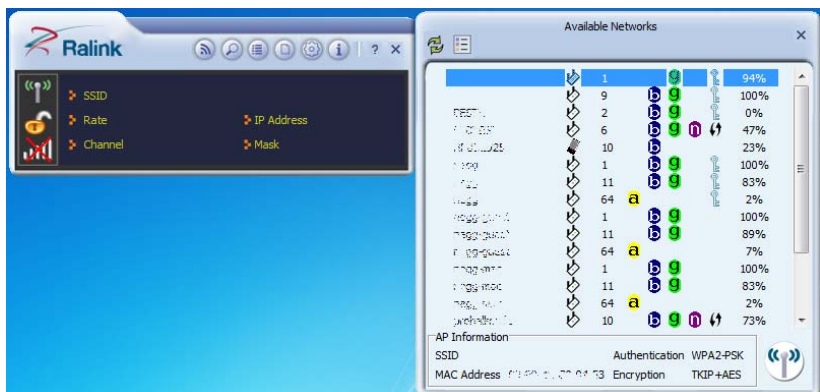
-  **Link Information**


-  **Profile**


-  **Advanced**

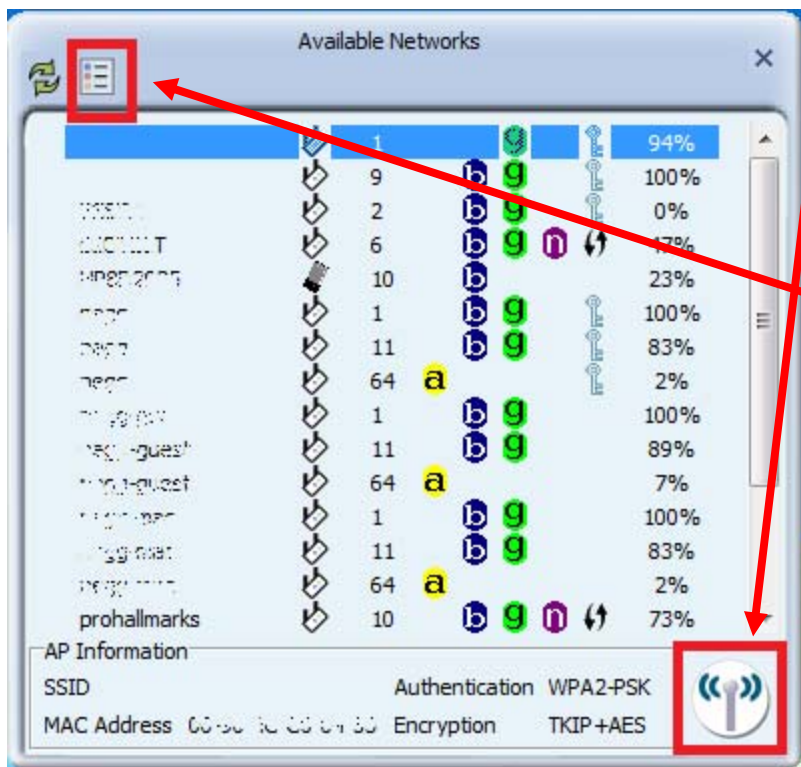
-  **About**


For Detail, please see manual.




Please first start by selecting  to search nearby wireless signal for connection.

When first click on , a window will popup and presents to you the nearby Wi-Fi Signals.



One time connect:
Please first highlight your desired SSID, then click . Then follow the popup window's direction to connect. (**Please see manual for detail**)

Setup the Profile for all future connect:

Please click  to add the SSID to profile for all future use. For detail, please follow Manual's **Add/Edit Profile** section.

Now you have completed the setup of your wireless network. You should be ready to surf!

Thank you for purchasing a quality Rosewill Product.
Please register your product at: www.rosewill.com for complete warranty information and future support for your product.

FCC Warning:

This device complies with Part 15 of the FCC Rules. Operation is subject to the following two conditions:

- (1) this device may not cause harmful interference, and
- (2) this device must accept any interference received, including interference that may cause undesired operation.

Changes or modifications not expressly approved by the party responsible for compliance could void the user's authority to operate the equipment.

NOTE: This equipment has been tested and found to comply with the limits for a Class B digital device, pursuant to Part 15 of the FCC Rules. These limits are designed to provide reasonable protection against harmful interference in a residential installation. This equipment generates, uses and can radiate radio frequency energy and, if not installed and used in accordance with the instructions, may cause harmful interference to radio communications. However, there is no guarantee that interference will not occur in a particular installation. If this equipment does cause harmful interference to radio or television reception, which can be determined by turning the equipment off and on, the user is encouraged to try to correct the interference by one or more of the following measures:

- Reorient or relocate the receiving antenna.
- Increase the separation between the equipment and receiver.
- Connect the equipment into an outlet on a circuit different from that to which the receiver is connected.
- Consult the dealer or an experienced radio/TV technician for help.

FCC RF warning statement: The device has been evaluated to meet general RF exposure requirement. The device can be used in portable exposure condition without restriction.

--Within the 5.15-5.25 GHz band, U-NII devices will be restricted to indoor operations to reduce any potential for harmful interference to co-channel MSS operations.