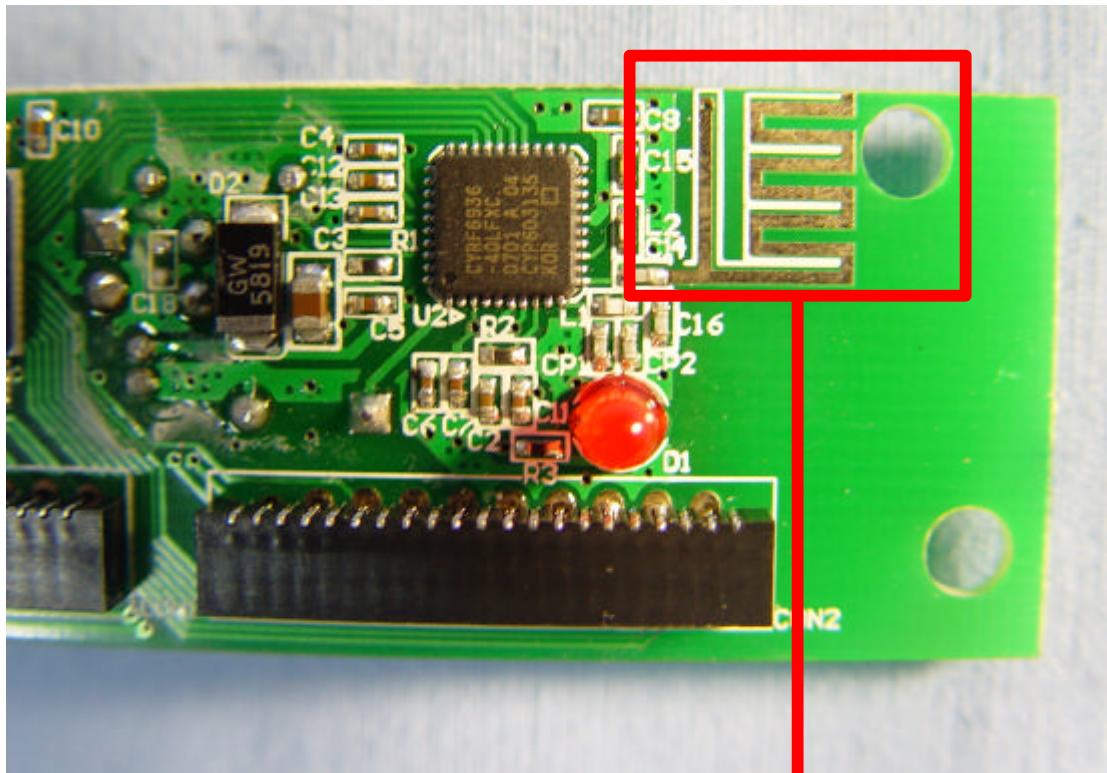


Antenna Spec

Antenna type: Printed Antenna



Antenna



CCS WUGU Antenna Pattern

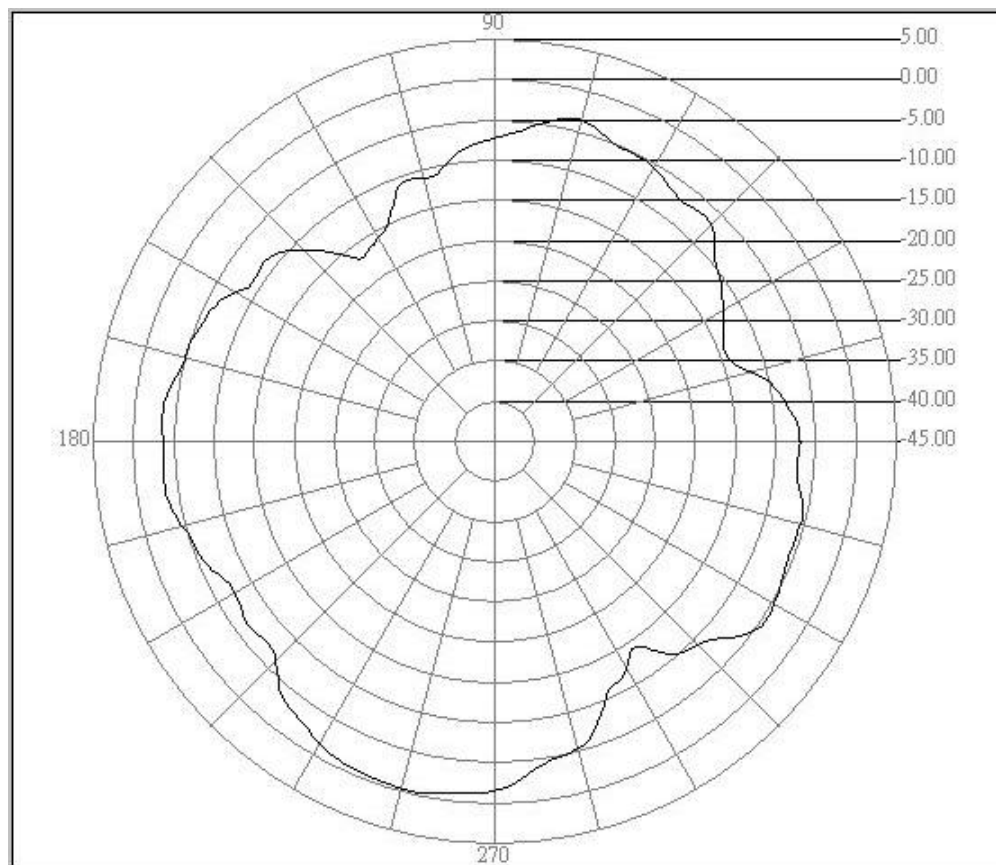
Job No.:新巨-keyboard-2500-H

Date:2006/12/21

Time:下午 04:34

Temp.()/Hum.(%):25 /80%

Tested by:



Center freq.(MHz): 2500

Polarization : H Plane

Max gain(dBi):-0.31

Min gain(dBi):-16.85

Avg gain(dBi):-5.61



CCS WUGU Antenna Pattern

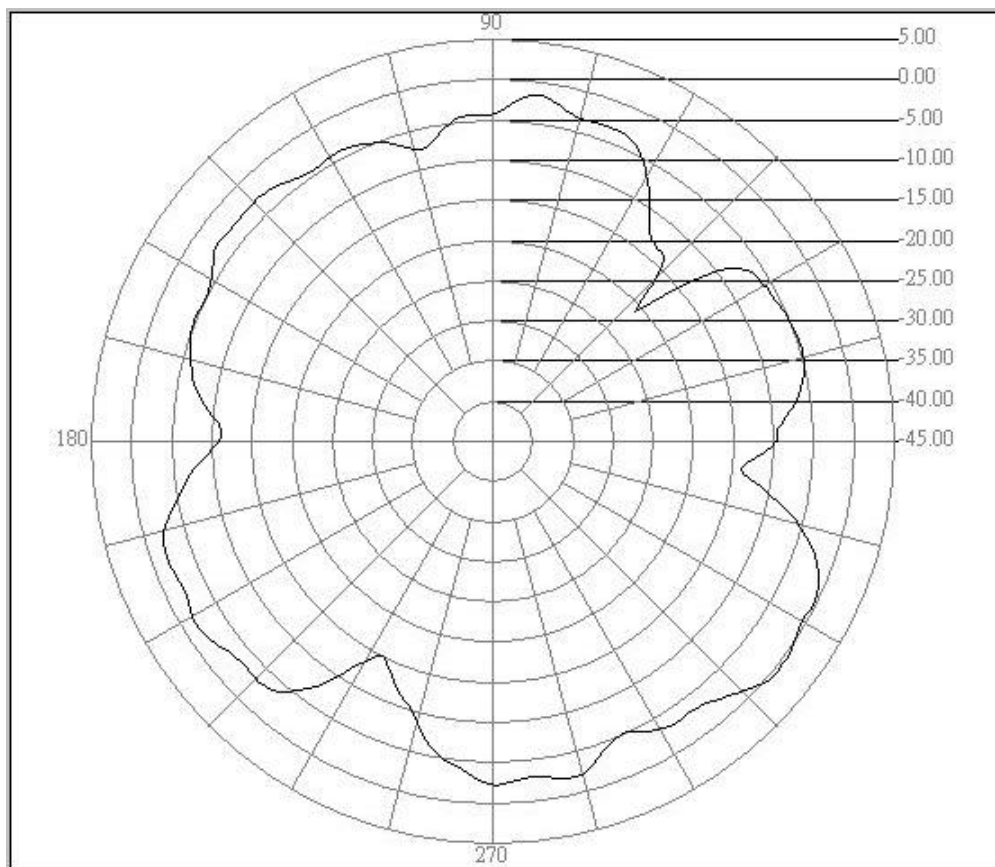
Job No.:新巨-keyboard-2500-E

Date:2006/12/21

Time:下午 04:44

Temp.()/Hum.(%):25 /80%

Tested by:



Center freq.(MHz): 2500

Polarization : E Plane

Max gain(dBi):0.52

Min gain(dBi):-20.99

Avg gain(dBi):-4.25



CCS WUGU Antenna Pattern

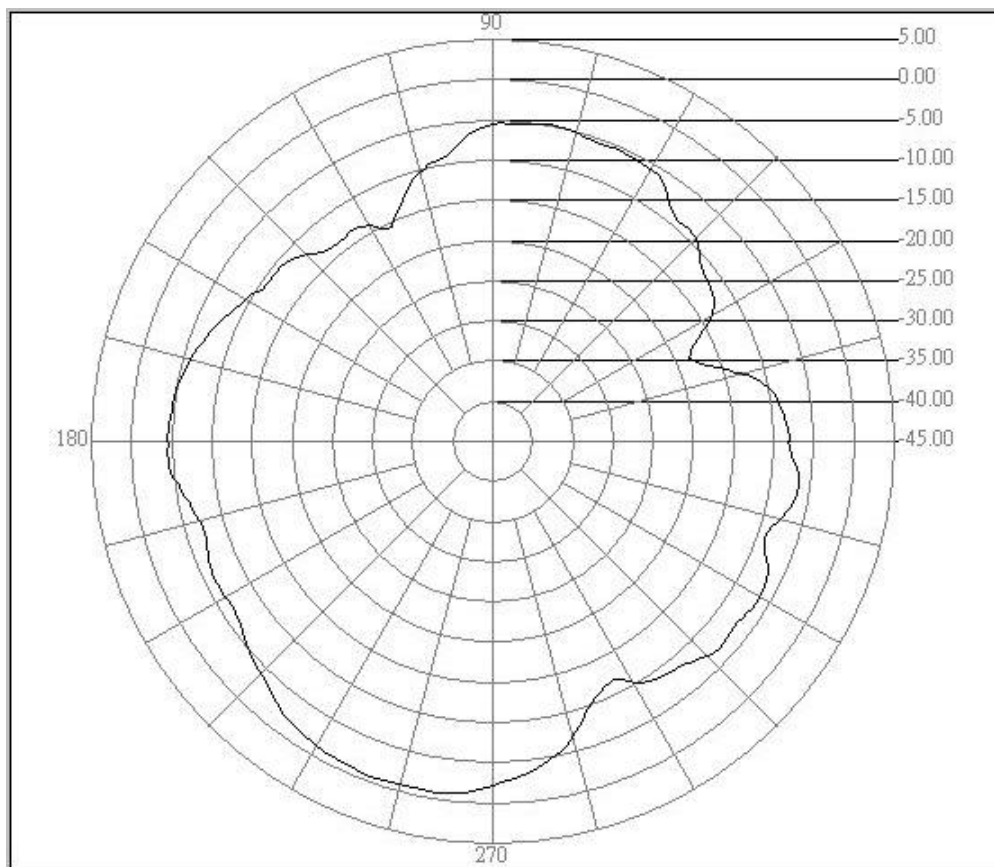
Job No.:新巨-keyboard-2450-H

Date:2006/12/21

Time:下午 04:36

Temp.()/Hum.(%):25 /80%

Tested by:



Center freq.(MHz): 2450

Polarization : H Plane

Max gain(dBi):-0.59

Min gain(dBi):-18.41

Avg gain(dBi):-6.03



CCS WUGU Antenna Pattern

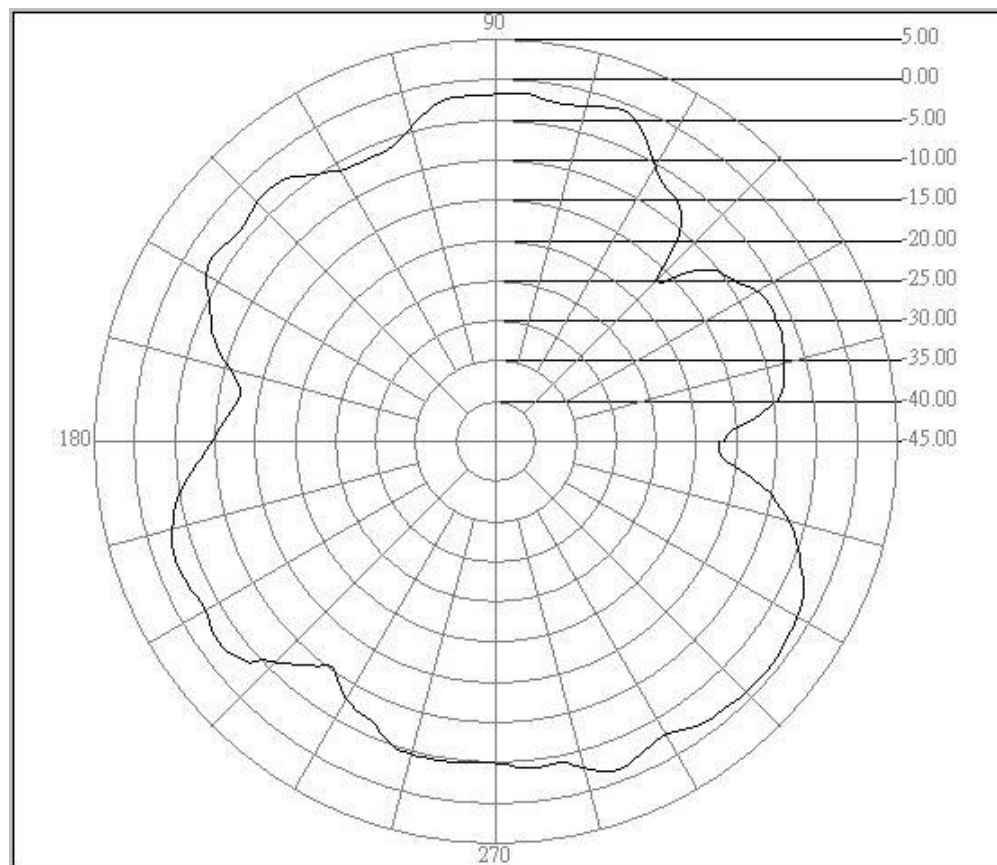
Job No.:新巨-keyboard-2450-E

Date:2006/12/21

Time:下午 04:42

Temp.()/Hum.(%):25 /80%

Tested by:



Center freq.(MHz): 2450

Polarization : E Plane

Max gain(dBi):-0.81

Min gain(dBi):-17.16

Avg gain(dBi):-4.36



CCS WUGU Antenna Pattern

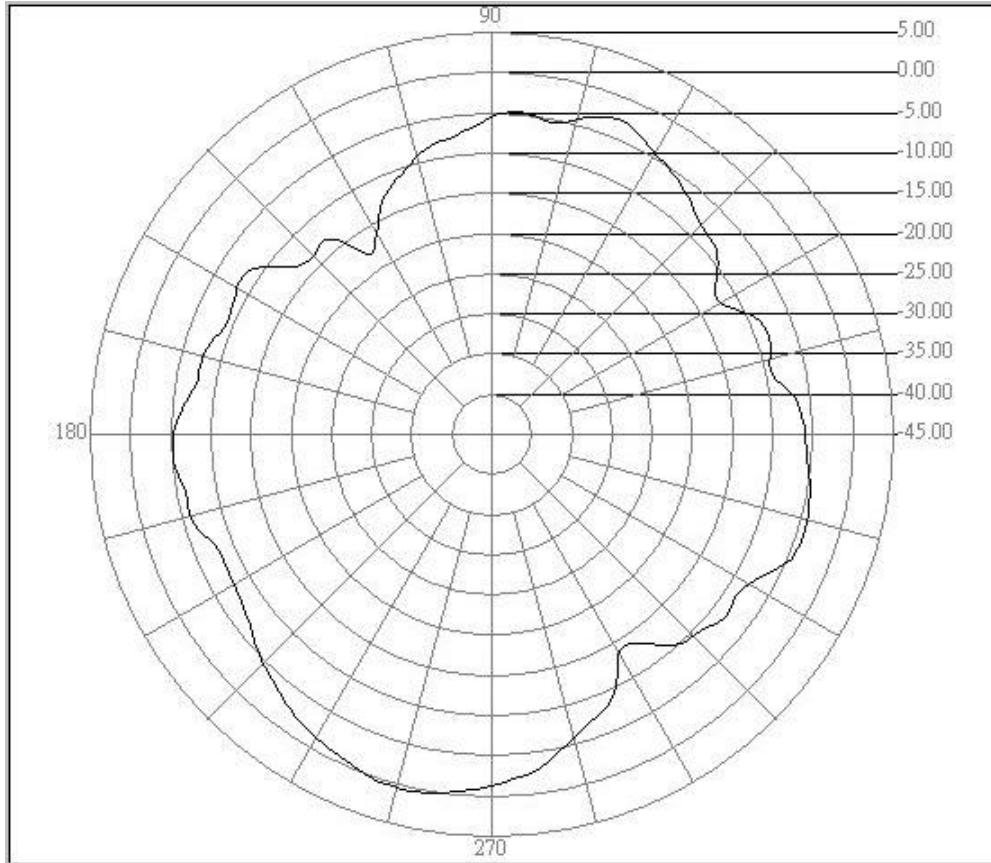
Job No.:新巨-keyboard-2400-H

Date:2006/12/21

Time:下午 04:37

Temp.()/Hum.(%):25 /80%

Tested by:



Center freq.(MHz): 2400

Polarization : H Plane

Max gain(dBi):0.51

Min gain(dBi):-17.99

Avg gain(dBi):-5.52



CCS WUGU Antenna Pattern

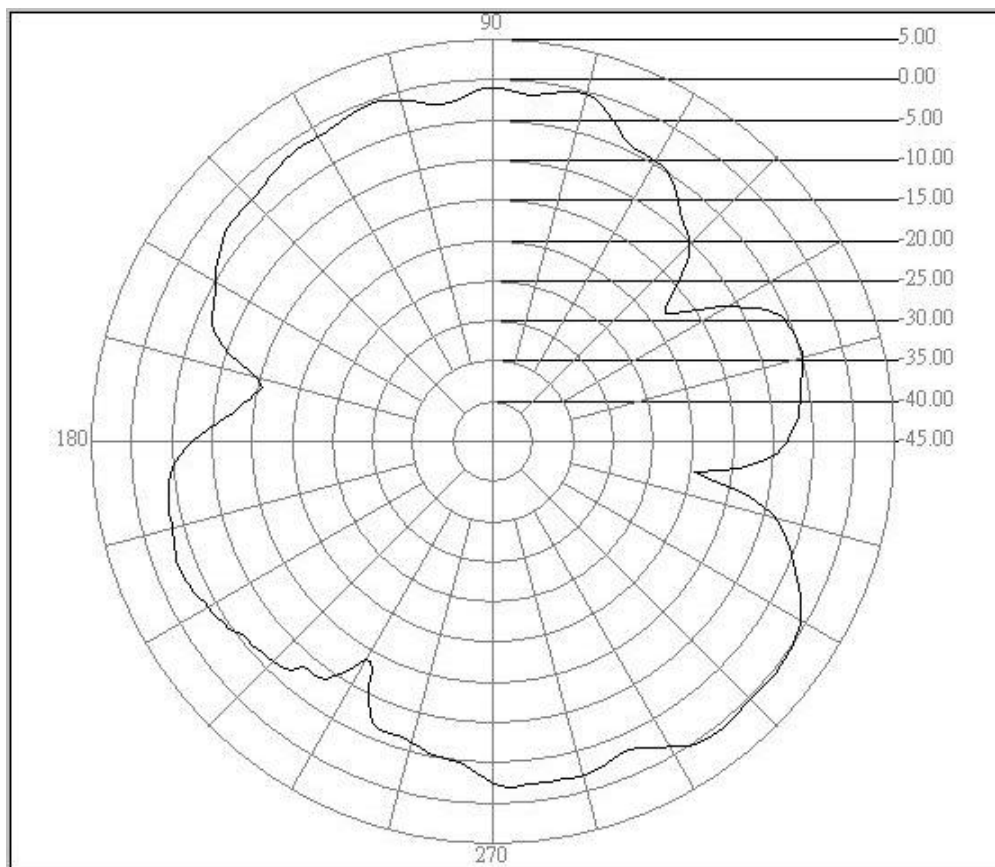
Job No.:新巨-keyboard-2400-E

Date:2006/12/21

Time:下午 04:40

Temp.()/Hum.(%):25 /80%

Tested by:



Center freq.(MHz): 2400

Polarization : E Plane

Max gain(dBi):0.71

Min gain(dBi):-19.64

Avg gain(dBi):-3.58