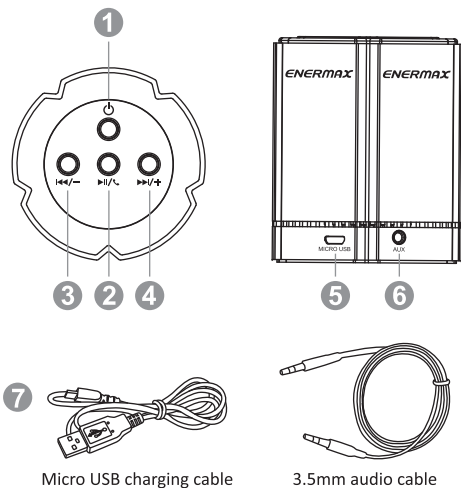


EAS02S
Wireless Speaker

Thank you for choosing Enermax EAS02S Wireless Speaker! Before you use the speaker, make sure to completely charge the device, and become familiar with the Bluetooth function on your paired devices.



Specifications

Model Name	EAS02S
Audio Specifications	
Speaker Unit	Ø52mm 4W driver + Ø52mm passive radiator
Frequency Response	70Hz-18KHz
Maximum Sound Level	110db
Signal-to-Noise Ratio	80db

General Specifications	
Battery Type	Li-Po rechargeable battery
Battery Life	Approx. 8 hours (varies by volume level and audio content)
Battery Charge Time	3 hours
Weights	320g
Dimensions	Ø72mm x H85mm

Connectivity Specifications	
Frequency Range	2.4 GHz – 2.48 GHz
Profile Support	HFP, A2DP, AVRCP, HSP, GAVDP, IOP
Line of Signal Range	70 ~ 75ft (actual operating distance depending upon environmental factors)

EN

The General Features

• Function

- On / Off**
 - Hold : Power on / off (connect with your device by bluetooth after power on)
 - Press : Light on / off
- Play / Pause, answering call**
 - Press : Play / Pause music
 - Short press the button to play / pause the music in Bluetooth mode
 - Short press the button to answer incoming calls, and press it again to end the call
 - Hold the button to reject incoming calls
- Prev / Volume down**
 - Press : Prev. the track
 - Hold : Volume down
- Next / Volume up**
 - Press : Next track
 - Hold : Volume up
- Charging interface**
- Audio input**
- Accessories**
- Bluetooth connection**
 - Turn on the speakers. Enter the status of the two speakers connected to each other. Bluetooth indicator light 1s pulse flashing
 - Two speakers connected to each other successfully, the Bluetooth indicator is always on. Default prompt tone.
 - Two speakers connected to each other is not successful, Bluetooth indicator light 0.1s pulse flashing.
 - Mobile / computer / other devices / open Bluetooth, and then click on the search, in the search to the machine inside the choice of EAS02S. After the pairing is successful, the Bluetooth indicator light is always on. Default prompt tone.
 - Keep press the play button to disconnect the Bluetooth connection. Default prompt tone.

ES

Características Generales

• Funciones

- Encendido / Apagado**
 - Mantener apretado : encendido / apagado
 - Haga clic en : La luz de encendido / apagado
- Play / Pausa / Contestar Llamadas**
 - Pulsar brevemente el botón para reproducir / pausar la música en modo Bluetooth.
 - Pulsar brevemente el botón para contestar llamadas, y pulsarlo de nuevo para terminar la llamada.
 - Pulsar durante más tiempo el botón para rechazar las llamadas.
- Pista anterior / Bajar Volumen**
 - Pulsar brevemente el botón para reproducir la pista anterior.
 - Pulsar durante más tiempo el botón para bajar el volumen.
- Pista siguiente / Subir el volumen**
 - Pulsar brevemente el botón para pasar a la pista siguiente.
 - Pulsar durante más tiempo el botón para subir el volumen.

5 Rozhranie nabíjania

6 Entrada de audio

7 Accesorios

IT

Caratteristiche generali

• Funzioni

- On / Off**
 - Tenere premuto : Acceso / spento
 - Clicca : Luce on / off
- Play / Pausa / risposta chiamata**
 - Premere brevemente il bottone per eseguire / mettere in pausa i brani in modalità Bluetooth.
 - Premere brevemente il bottone per rispondere alle chiamate in entrata e premerlo di nuovo per terminare la chiamata.
 - Premere il bottone per un periodo più lungo per rifiutare la chiamata entrante.
- Brano Precedente / Abbassare Volume**
 - Premere brevemente il bottone per eseguire il brano precedente.
 - Premere per un periodo più lungo il bottone per abbassare il volume.
- Brano successivo / Aumentare Volume**
 - Premere brevemente il bottone per passare al brano successivo.
 - Premere per un periodo più lungo il bottone per aumentare il volume.
- Interfaccia di Carica**
- Ingresso audio**
- Accessori**

SK

Všeobecná charakteristika

• Funkcia

- Zapnúť / vypnúť**
 - Podržte : Zapnúť / vypnúť napájanie
 - Kliknutie : Svetlo zapnuté / vypnuté
- Play / Pause, answering call**
 - Press : Play / Pause music
 - Short press the button to play / pause the music in Bluetooth mode.
 - Short press the button to answer incoming calls, and press it again to end the call.
 - Long press the button to reject incoming calls
- Predchádzajúca skladba / Znížiť hlasitosť**
 - Ak chcete prehrať predchádzajúcu skladbu, krátko stlačte tlačidlo č.
 - Ak chcete znížiť hlasitosť, dlho stlačte tlačidlo č.
- Ďalšia skladba / Zvýšiť hlasitosť**
 - Ak chcete preskočiť ďalšiu skladbu, krátko stlačte tlačidlo č.
 - Ak chcete zvýšiť hlasitosť, dlho stlačte tlačidlo č.
- Nabíjacie rozhranie**
- audio vstup**
- Príslušenstvo**

TW

功能說明

- 開 / 關**
 - 長按：開 / 關
 - 輕按：開啟 / 關閉LED燈
- 播放 / 暫停 / 接聽電話**
 - 在藍牙模式下短按按鈕可播放 / 暫停音樂EAS02在藍牙模式下具有免持接聽功能，按下按鈕可接聽電話，再按一下可結束通話，如果不想接聽，可以長按按鈕拒絕接聽
- 上一首 / 降低音量**
 - 短按按鈕可以播放前一首歌曲，長按按鈕可以降低音量
- 下一首 / 增加音量**
 - 短按按鈕可以播放下一首歌曲，長按按鈕可以增加音量
- 充電介面**
- 音源孔**
- 配件**

FCC Notices

The manufacturer is not responsible for any radio or TV interference caused by unauthorized modifications to this equipment. Such modifications could void the user's authority to operate the equipment.

This device complies with Part 15 of the FCC Rules.

- (1) This device may not cause harmful interference, and
- (2) this device must accept any interference received, including interference that may cause undesired operation.

NOTE: This equipment has been tested and found to comply with the limits for a Class B digital device, pursuant to part 15 of the FCC Rules. These limits are designed to provide reasonable protection against harmful interference in a residential installation. This equipment generates uses and can radiate radio frequency energy and, if not installed and used in accordance with the instructions, may cause harmful interference to radio communications. However, there is no guarantee that interference will not occur in a particular installation. If this equipment does cause harmful interference to radio or television reception, which can be determined by turning the equipment off and on, the user is encouraged to try to correct the interference by one or more of the following measures:

- Reorienting or relocating the receiving antenna
- Increasing the distance between the equipment and receiver
- Connecting the equipment to an outlet on a circuit which is different from the one the receiver is connected to
- Consult a qualified expert for help