

PS3IR-1000

User Manual



Version 1.0

© Schmartz, Inc. 2009

Warnings:

- Do not expose PS3IR-1000 to excessive heat.
- Install only indoors in dry locations.
- Clean with dry or slightly damp soft cloth.

Liability Statement

Every effort has been made to insure that this product is free of defects. Schmartz, Inc. cannot be held liable for the use of this hardware or any direct or indirect consequential damages arising from its use. All rights are reserved. No parts of this manual may be transmitted or reproduced by any means mechanical or electronic, including photocopying, or recording by any information storage/retrieval system without the written consent of Schmartz, Inc.

Schmartz, Inc. reserves the right to revise any of its hardware / firmware to improve its products where necessary or desirable.

Table of Contents

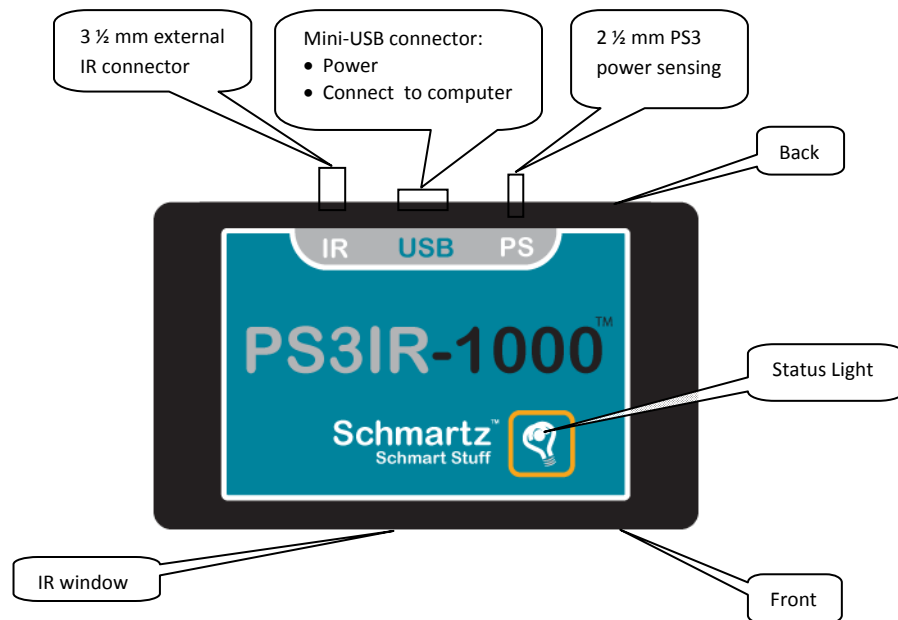
INTRODUCTION.....	4
GETTING ACQUAINTED	4
UTILITY TOOL.....	5
EXTERNAL IR INPUT.....	6
PS3 POWER SENSING	7
TRAINING YOUR UNIVERSAL REMOTE	8
USER MACROS	9
CREATING MACROS	9
USING MACROS	11
FIRMWARE UPDATES	12
TROUBLESHOOTING GUIDE	13
PS3IR-1000 IS NOT WORKING AT ALL	13
PS3 WILL NOT POWER DOWN	14
REMOTE OPERATES INCONSISTENTLY, RANGE NOT SATISFACTORY	14
PS3 POWERS UP UNEXPECTEDLY	14
POWER SENSING NOT WORKING PROPERLY	14
REGULATORY COMPLIANCE.....	15

Introduction

Getting Acquainted

The PS3IR-1000 has several features that require you to be familiar with the device layout and terminology. The picture below is what your device looks like from the top. There are three connectors on the back, from left to right these are:

- IR, a 3 ½ mm female connector used to connect to an external IR source (IR Repeater).
- USB, a mini USB connector used to power your device or connect to your PC for various configuration and support reasons.
- PS, a 2 ½ mm female connector used to connect to the PS3 for optional external power sensing.



The status light, in the Schmartz logo, will be on when power is applied and will flash as commands are being processed. The status light will help you verify that the device is operating properly.

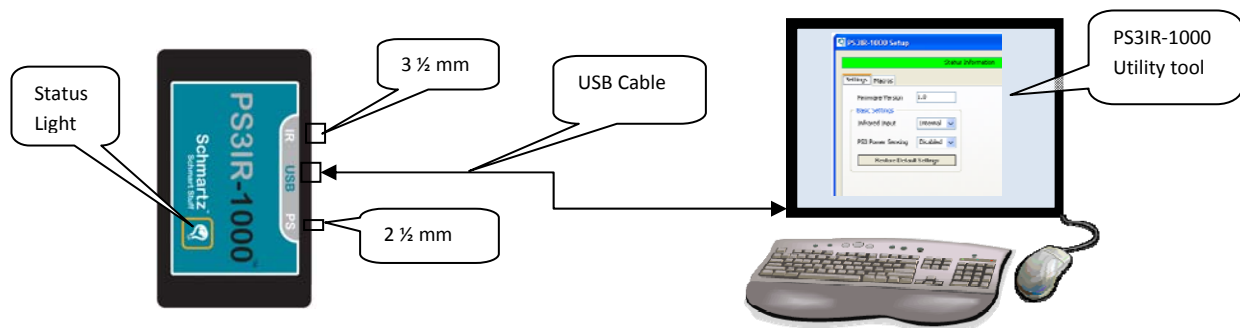
The IR window is on the front of the device. This window must have line of sight with your remote control in order for the internal sensor to “see” the IR commands.

Utility tool

The PS3IR-1000 comes from the factory with the most frequently used features properly configured as default settings. If you wish to utilize advanced features, you would use the PS3IR-1000 Utility tool to configure these features:

- Use of external IR inputs (Are you using an IR Repeater?).
- Use of PlayStation 3® (PS3) power sensing.

To use the PS3IR-1000 Utility, connect the PS3IR-1000 to your computer using the supplied USB cable. The Utility is available to any PC running Windows 2000 or later and can be found on the Schmartz.com website.



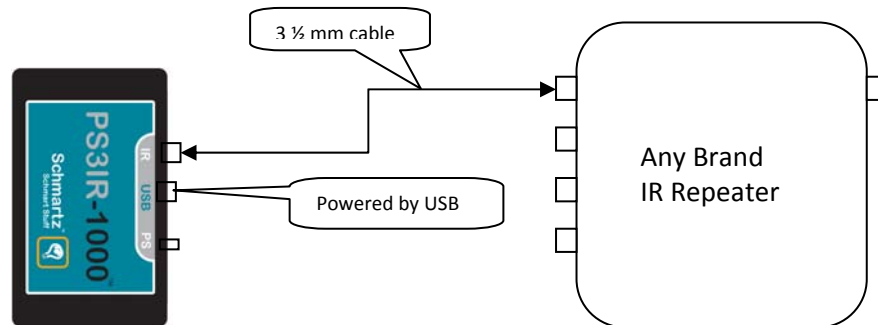
The PS3IR-1000 Utility is also used for other advanced features such as training your universal remote, controlling your PS3 directly from your computer and writing user macros. All of these features are discussed elsewhere in this manual.

External IR Input

By default, the PS3IR-1000 receives signals from your remote control using its internal IR sensor. Optionally, the PS3IR-1000 can receive signals from an IR repeater (all brands are supported).

Connections:

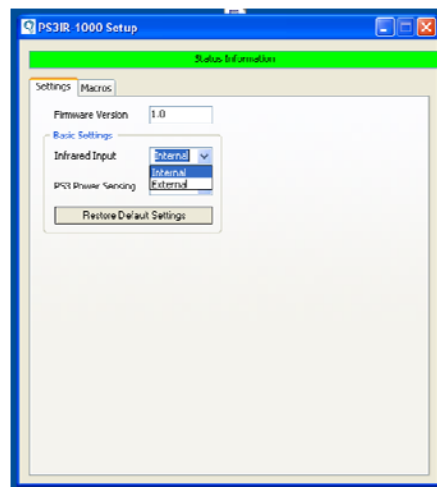
- Use a 3 ½ mm cable for the PS3IR-1000 and the IR repeater (standard cable).
- There are no polarity or length considerations for this connection.



Configuration:

- Connect the PS3IR-1000 to your computer using the supplied USB cable.
- Go to Schmartz.com and locate the PS3IR-1000 Setup tool ([click here](#)). Click on the link.
- The PS3IR-1000 Utility tool provides two options for IR inputs:
 - Internal (IR sensor)
 - External (cable connected to IR Repeater)
- The factory default for IR input is “Internal”.
- Configuration changes are stored automatically.

The following image illustrates selecting “Internal” setting for Infrared input:

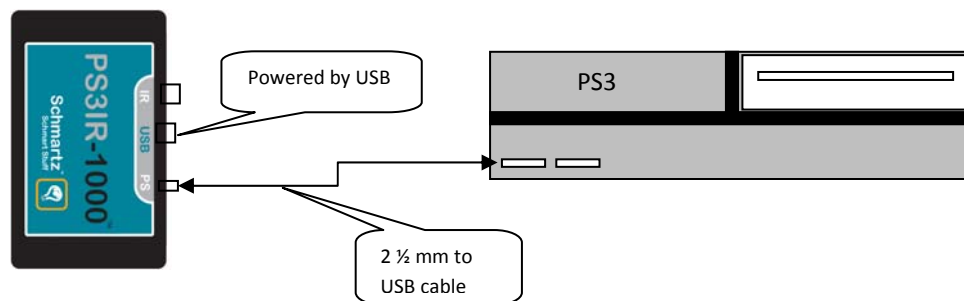


PS3 Power Sensing

The PS3IR-1000 keeps track of the power status of the PS3 internally. It is possible to lose proper track of power status due to manual operations (such as inserting a DVD). For ideal tracking of PS3 power status, you may use the power sensing feature. This feature requires a cable between the PS3 and the PS3IR-1000. You may make this cable yourself (see diagram below) or purchase this cable separately from Schmartz.

Connections:

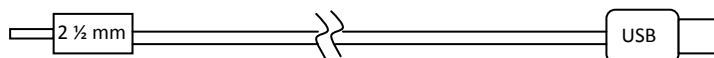
- Make sure your PS3 is at firmware level 2.20 or higher.
- Connect the power sensing cable between any PS3 USB port and the PS3IR-1000 PS port.



Configuration:

- Connect the PS3IR-1000 to your computer using the supplied USB cable.
- Go to Schmartz.com and locate the PS3IR-1000 Utility tool ([click here](#)). Click on the link.
- The PS3IR-1000 Utility tool provides two options for power sensing:
 - Disabled
 - Enabled
- The factory default for power sensing is “Disabled”.
- Configuration changes are saved automatically.

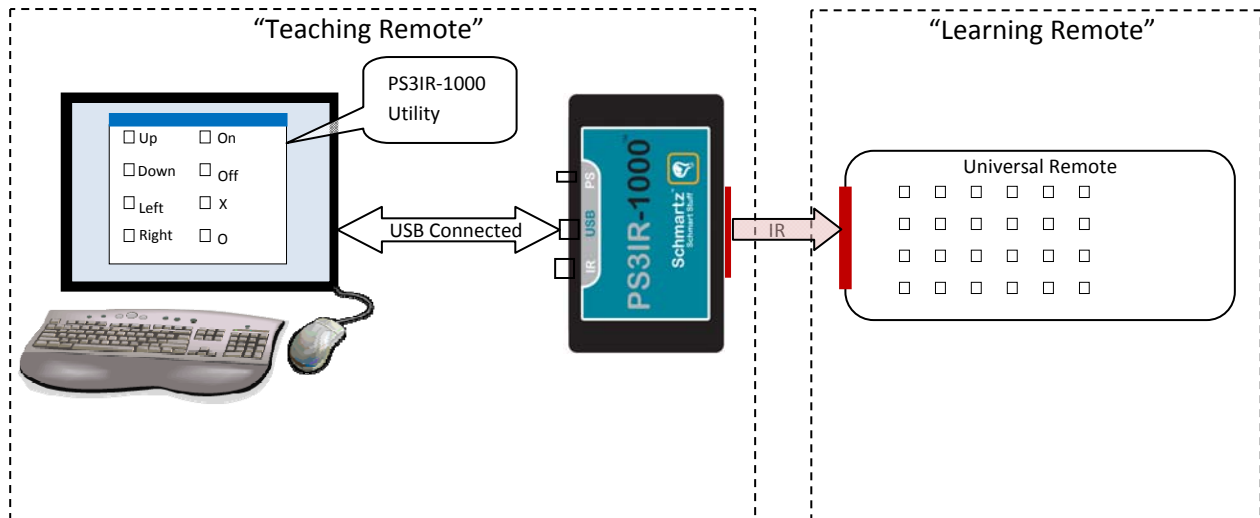
To create your own power sensing cable, refer to the following diagram:



One end is a standard 2 1/2 mm male plug. There are no polarity considerations, so either wire can be connected to either side of the plug. The other end is a USB connector – use the outside two pins. There are no polarity considerations, so either wire can be connected to either pin of the USB plug.

Training your universal remote

Training a universal remote requires two remote controls. The “teaching remote” refers to the remote control that is providing the training commands. For the remainder of this discussion the “training remote” refers to a combination of the PS3IR-1000 and your computer running the PS3IR-1000 Utility. This will serve as the PS3 remote control. The “learning remote” refers to your universal remote as illustrated in the following diagram.



Use the following procedure to train your universal remote with PS3 commands:

- Connect the PS3IR-1000 to your computer, start the PS3IR-1000 Utility and select the “Teach” tab.
- Point the PS3IR-1000 IR window at the Universal Remote IR window.
- Refer to the documentation for your universal remote to determine how your universal remote is trained.
- When the documentation refers to the “Teaching Remote”, use the corresponding buttons on the PS3IR-1000 Utility remote.
- Repeat these steps until you have trained your universal remote with the necessary PS3 commands.

User Macros

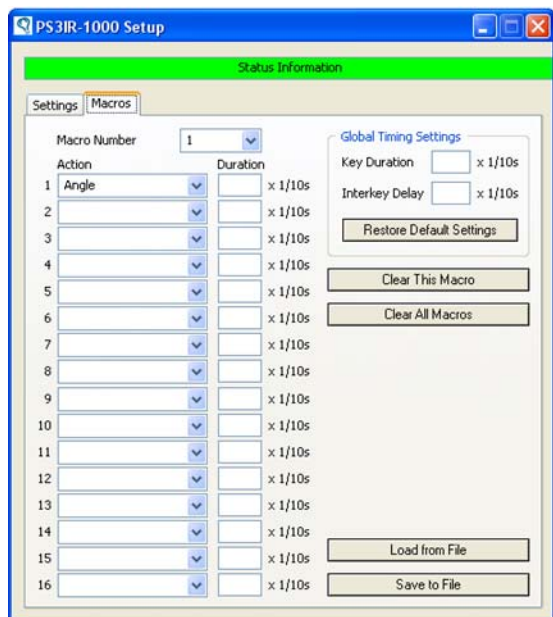
User macros are a series of commands that can be defined once and then used over and over to automate frequently used functions such as launching your favorite game, listening to music, or displaying a slideshow. To create or edit a macro, simply connect your PS3IR-1000 to your computer and run the Utility tool. Once the Utility tool is running click on the “Macro” tab to reveal the macro page of the Utility tool.

Creating Macros

On the macro page you will find two settings that apply to all macros in a global fashion. As the author of macros, you can control how long a command key is pressed (Key Duration) and how much delay exists between the keys (Interkey Delay). The fields for these values are in the upper right section of the macro page. You may leave the system defaults or set your own values to your own needs. The values in these fields are in 1/10 second intervals. You may specify a value from 1 to 250 meaning time intervals as small as 1/10 sec up to 25 seconds. If you click the “Restore Default Settings” button, the factory default value will be set in both Key Duration and Interkey Delay fields.

Macros are made up of a series of steps. Each step can be:

- Send a Key with an optional duration (All PS3 remote keys are supported)
- Delay execution for a specified duration
- Issue another macro (can NOT issue this macro from within this macro)



You can define up to 12 macros, each of which may be up to 16 steps. The PS3IR-1000 will detect and prevent “never ending” macros.

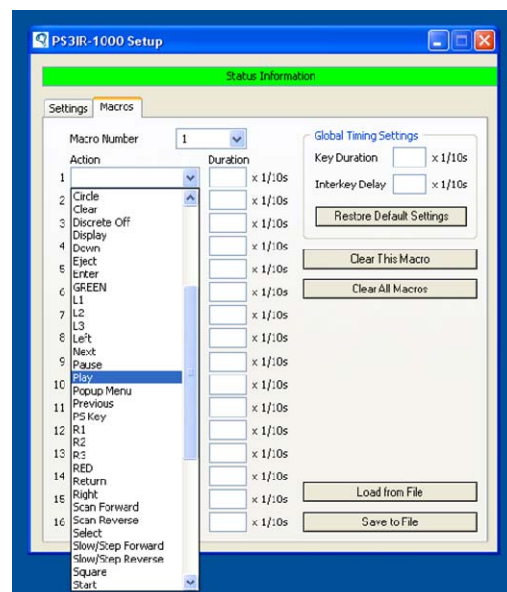
There are several buttons and selector boxes on the Utility tool relating to macros. They are:

- Selector box “Macro Number” – Use this to select which of the 12 macros you want to create or edit.
- There are two buttons to clear (erase) macros. These buttons are:
 - Clear This Macro – clears the macro selected in the Macro Number selector box.
 - Clear All Macros – clears all 12 macros.

WARNING: The Clear buttons are permanent and cannot be undone.

- Execute This Macro – this button will execute the selected macro if the PS3IR-1000 is properly paired with a PS3 that is within Bluetooth receiver range. If the PS3 is not available to you then you will have to test the macro using your universal remote and PS3 at a later time.
- Load from File – this button loads all 12 macros from a predefined location on your computer.
- Save to File – Saves all 12 macros from your PS3IR-1000 to a predefined location on your computer. Of course you will want to create some macros before saving them ☺.

To begin the process of creating a macro, first think about what you want the PS3 to do and how you would accomplish the task using a remote control. You may consider jotting the steps on a piece of paper and testing your plan using the PS3 and a remote control. After planning your macro, you are ready to start creating the macro with the Utility tool. Start by selecting the Macro Number you wish to create. Starting with step 1 select the command you wish to use first. The screen shot below shows that step 1 of Macro 1 will be the command key “Play”. With each command you may optionally specify duration in 1/10 second intervals. Specifying duration for each command will take extra space and may reduce the number of steps available for this macro. If you do not specify duration, the default duration is used. Repeat the process of selecting a command key for each macro step until you are done entering your macro (up to 16 steps). There are no special requirements to end a macro – when you are done issuing commands, leave the rest of the macro steps blank.



Using Macros

The PS3IR-1000 understands IR commands for Macro keys 1 through 12. Your universal remote will have to be taught these keys and mapped to locations of your choice in your particular universal remote before you can issue your macro command via your universal remote. If you have not done that step, you can still test your macro using the “Execute This Macro” button and your PS3.

When planning your macros, keep in mind that a macro can use another macro. If there are a series of steps that are common to several tasks, you can prefect this series of steps and save it as a macro that can be used over and over.

There may be cases in developing macros that you want to wait to give the PS3 time to perform a long operation (perhaps power up or loading a game). For the cases that you want to insert a deliberate delay in your macro, there is a command in the drop down list of commands called “Delay”. This is not actually a PS3 command but it is a command to the PS3IR-1000. In this case you would use the duration to set the time to wait. If you wanted a 15 second delay, you would enter a 150 in the duration field with the macro step that contained the “Delay” command.

Firmware Updates

From time to time Schmartz may determine that firmware updates are required to keep the PS3IR-1000 operating properly or to add new features. It will be necessary to attach the PS3IR-1000 to your computer and run the PS3IR-1000 Utility tool to take advantage of the new firmware.

To obtain the latest firmware, go to Schmartz.com, locate the PS3IR-1000 Utility tool and click on the link to start the program running on your workstation. You may plug the PS3IR-1000 into your computer before or after starting the PS3IR-1000 Utility. The Utility tool will locate your PS3IR-1000 and automatically update your firmware as needed.

When you are finished, you may unplug your PS3IR-1000 and return it to its permanent location.

Troubleshooting Guide

PS3IR-1000 is not working at all.

Diagnose general problems systematically:

- 1) **Is the PS3IR-1000 powered up properly?** Is the status light on solid?

If yes – go to step 2.

If no – Plug USB cable into any powered USB port. Consider using:

- Satellite receiver
- DVR/TIVO
- Nearby computer
- Other component with a USB port
- USB charger

Make sure the selected component is plugged into a working power outlet. **Do not use a PS3 USB port for power** as those ports are not powered when the PS3 is in standby. If these steps fail, replace the USB cable.

If you are unable to get the status light on, contact Schmartz for help.

- 2) **Is the PS3IR-1000 receiving and processing IR commands?** If you are using Internal IR mode, set your remote control to address the PS3 and click buttons on the remote to send IR commands. If the status light flashes briefly when you click a button on the remote, then the unit is receiving and processing IR commands. If you are using IR external mode, the status light should flash when IR commands are delivered through the IR Repeater. If the status light is flashing when IR commands are delivered to the PS3IR-1000 go to step 3.

If the status light is not flashing, consider:

- Is your remote control properly programmed with PS2 codes? See the installation instructions.
- Is the remote control working (i.e., will it operate other devices properly)?
- Is the remote control set to address the PS3IR-1000?
- Is there an unobstructed line of sight between the remote control and the PS3IR-1000?
- Is the PS3IR-1000 set up for External IR? The factory default setting is for internal IR processing. If you have run the PS3IR-1000 Utility, you may have set IR input to External.

If you are unable to get the status light to flash (indicating IR command processing), contact Schmartz for help.

- 3) **Is the PS3IR-1000 properly paired with your PS3?** Assuming the status light flashes in response to IR commands and the PS3 is not accepting commands from the PS3IR-1000, you have to re-do the pairing procedure. (Refer to the installation instructions). After pairing, if the status light flashes and the PS3 is not responding, contact Schmartz for help.

PS3 will not power down

Problem: I issue a command from the PS3IR-1000 to power off the PS3 but the PS3 does not shut off.

Solution: If you have enabled power sensing in the PS3IR-1000 but have not connected the power sensing cable, the PS3IR-1000 will never power off the PS3. To correct this, connect the power sensing cable or disable the power sensing feature.

Remote operates inconsistently, range not satisfactory

Problem: My remote works sometimes or I have to move closer to the PS3IR-1000.

Solution: Most IR remote controls should operate correctly up to 25 feet. Put new batteries in the remote control to make sure they are fresh. Make sure there is an unobstructed view between the remote and the PS3IR-1000. Avoid bright sunlight or very bright incandescent light near the PS3IR-1000. Plasma TV screens may also interfere with operation of IR remote controls.

PS3 powers up unexpectedly

Problem: The PS3 powers up unexpectedly. Usually when I am shutting everything down, the PS3 comes on.

Solution: The PS3IR-1000 normally keeps track of the PS3 power status internally. If you have done anything manually to the PS3 that affects power that the PS3IR-1000 is unaware of (powered off PS3 using a game controller, use manual power switch or insert a DVD), the PS3IR-1000 may be out of sync regarding power status. If these manual situations result in an undesirable operating environment, you can use the optional power sensing feature of the PS3IR-1000 and connect a power sensing cable between the PS3IR-1000 and the PS3. With the power sensing feature enabled and properly connected, unexpected power up is eliminated.

Power sensing not working properly

Problem: I am using power sensing but PS3 not powering up/down correctly.

Solution: Proper operation of PS3IR-1000 power sensing depends on two things:

- Connecting a power sensing cable between the PS3 (any USB port and the PS3IR-1000 PS port). Verify that this cable is connected properly.
- Verify that power sensing is enabled (See PS3 POWER SENSING section.)

Regulatory Compliance

The PS3IR-1000 complies with Part 15 of the FCC Rules. Operation is subject to the following two conditions:

1. This device may not cause harmful interference
2. This device must accept any interference received, including interference that may cause undesired operation.

Changes or modifications not expressly approved by Schmartz Inc. could void the authority to operate the equipment.

NOTE: This equipment has been tested and found to comply with the limits for a Class B digital device, pursuant to Part 15 of the FCC Rules. These limits are designed to provide reasonable protection against harmful interference in a residential installation. This equipment generates, uses and can radiate radio frequency energy and, if not installed and used in accordance with the instructions, may cause harmful interference to radio communications. However, there is no guarantee that interference will not occur in a particular installation.

If this equipment does cause harmful interference to radio or television reception, which can be determined by turning the equipment off and on, the user is encouraged to try to correct the interference by one or more of the following measures:

- Reorient or relocate the receiving antenna.
- Increase the separation between the equipment and receiver.
- Connect the equipment into an outlet on a circuit different from that to which the receiver is connected.
- Consult the dealer or an experienced radio/TV technician for help.