



User Manual

UM-230, UC-230

Version : 1.0
19 April 2013

The contents of this installation guide product improvement or feature changes are subject to change without prior notice.

User Manual

Table of Contents

1. PURPOSE of DOCUMENT.....	3
2. REFERENCE	4
3. About the product.....	5
UM-230	5
UC-230.....	6
4. How to Power On/Off the terminal	7
UM-230	7
UC-230.....	7
5. Battery Installation.....	8
6. Battery Charging.....	9
7. Changing the printing paper	10
8. Merchant Menu	11
8.1 Terminal Application Menu	11
8.2. Merchant Configuration Menu	13

1. PURPOSE of DOCUMENT

This manual is protected by copyright with all rights reserved.

This manual may not be copied, reproduced, adapted or translated into another language, either in whole or in part without prior consent of Hanchang System.

The contents of this manual are provided "as is" and the specification herein is subject to change without prior notification.

The specification in this UM-230 user manual makes no warranty of any kind with regard to this manual, including, but not limited to, the implied warranties of merchantability and fitness for a particular purpose.

All programs included in this product are protected by copyright. All rights are reserved. Reproduction, adaptation, or translation without prior written permission is prohibited.

All product names used in this manual or mentioned on the product are trade names, trademarks and/or registered trademarks of the respective owners.

Hanchang System Corp.

1058-2 Singil-dong, Danwon-gu, Ahnsan-si, Gyeonggi-do, 425-839, South Korea

TEL : +82-31-493-0900

FAX : +82-31-493-0905

2. REFERENCE

UM-230 is an EFT-POS terminal, which runs Linux. UM-230 is an online transaction terminal to complete versatile roles not only credit card transactions but also keeping records of sales in total, current states, any data you want including their updates.

UM-230 operates based on the cutting-edge Linux OS which enables users to achieve a very high degree of works swiftly.

UM-230 not only increases convenience of your work by using credit card transaction and print-out receipts, but also allows you to refer a bank check with connection to an external device.



USER MANUAL



Adapter(UM-230)



Paper roll



Adapter(UC-230)



Telephone Cable(UC-230)

The contents in this manual are subject to change to improve the product's function without a notice in advance.

Use only No.26 AWG or larger, telephone line cord, if necessary.
Otherwise, it can cause damage to the machine.(UC-230 only)

3. About the product

UM-230



UM-230 Left Side

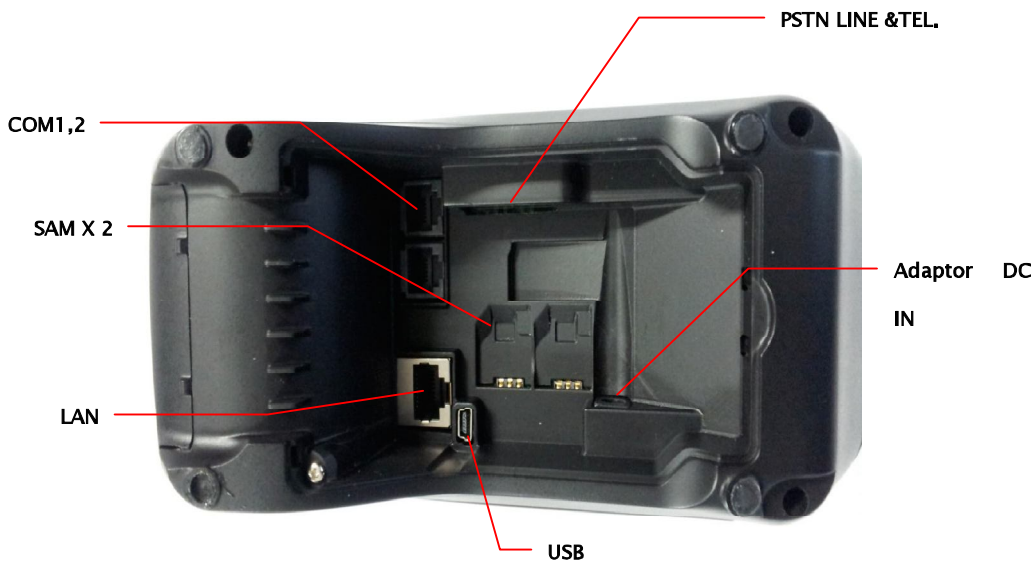


UM-230 Front

UC-230



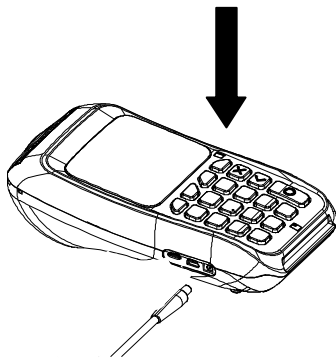
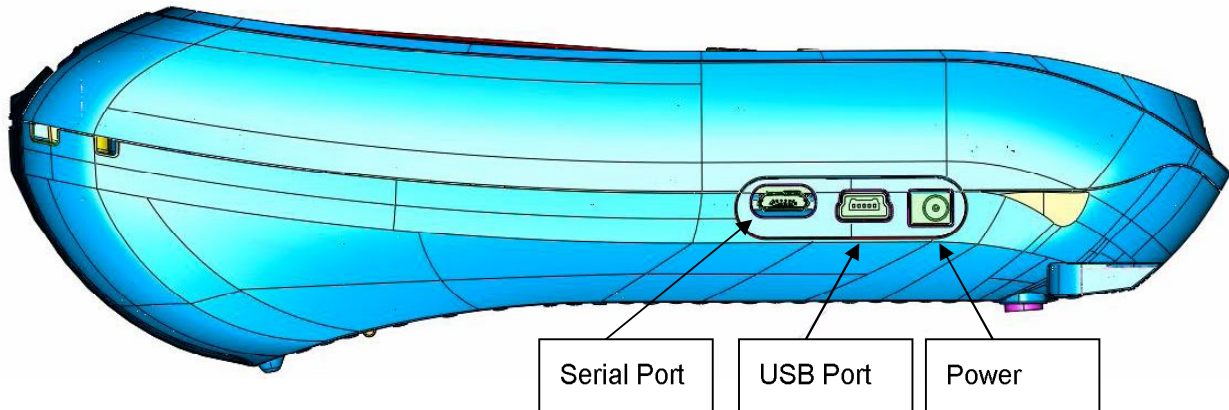
UC-230 Right Side



UC-230 Left Side

4. How to Power On/Off the terminal

UM-230



1. Put the terminal in a safe position.
2. Connect it to the power plug in left side
3. Press the CANCEL key.

UC-230.



1. Plug the power cable to the terminal
2. Press the CANCEL key to power up

5. Battery Installation



1. Insert the battery on the bottom of the printer as the picture shown.
2. Push the battery inside until it snaps into place.

Note)

As the battery is not initially charged when purchased, charge it first before use. (Use the

CAUTION

RISK OF EXPLOSION IF BATTERY IS REPLACED BY AN INCORRECT TYPE.
DISPOSE OF USED BATTERIES ACCORDING TO THE INSTRUCTIONS

CAUTION :

Any Changes or modifications not expressly approved by the manufacturer could void the user's authority to operate the equipment.

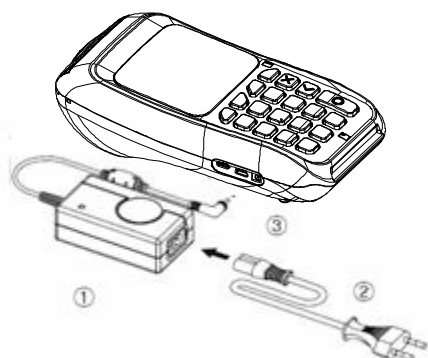
Mobile Device RF Exposure Statement

RF Exposure - This device is only authorized for use in a mobile application. At least 20 cm of separation distance between the transmitting antenna device and the user's body must be maintained at all times.

This equipment has been tested and found to comply with the limits for a Class B digital device, pursuant to part 15 of the FCC Rules. These limits are designed to provide reasonable protection against harmful interference in a residential installation. This equipment generates, uses and can radiate radio frequency energy and, if not installed and used in accordance with the instructions, may cause harmful interference to radio communications. However, there is no guarantee that interference will not occur in a particular installation. If this equipment does cause harmful interference to radio or television reception, which can be determined by turning the equipment off and on, the user is encouraged to try to correct the interference by one or more of the following measures:

- Reorient or relocate the receiving antenna.
- Increase the separation between the equipment and receiver.
- Connect the equipment into an outlet on a circuit different from that to which the receiver is connected.
- Consult the dealer or an experienced radio/TV technician for help.

6. Battery Charging



- 1) Turn the power off.
- 2) Connect the power cable ② to the battery charger ①.
- 3) Open the interface cap. ③.
- 4) Connect the battery charger ① into the power connector of the printer.
- 5) Plug the cord ② in a power outlet.

Note)

In case of not using of its own battery charger provided by our company, a serious damage can occur, which is not covered. (While charging the battery, Voltage and current should be met).

Warning)

Turn the power off while charging the battery

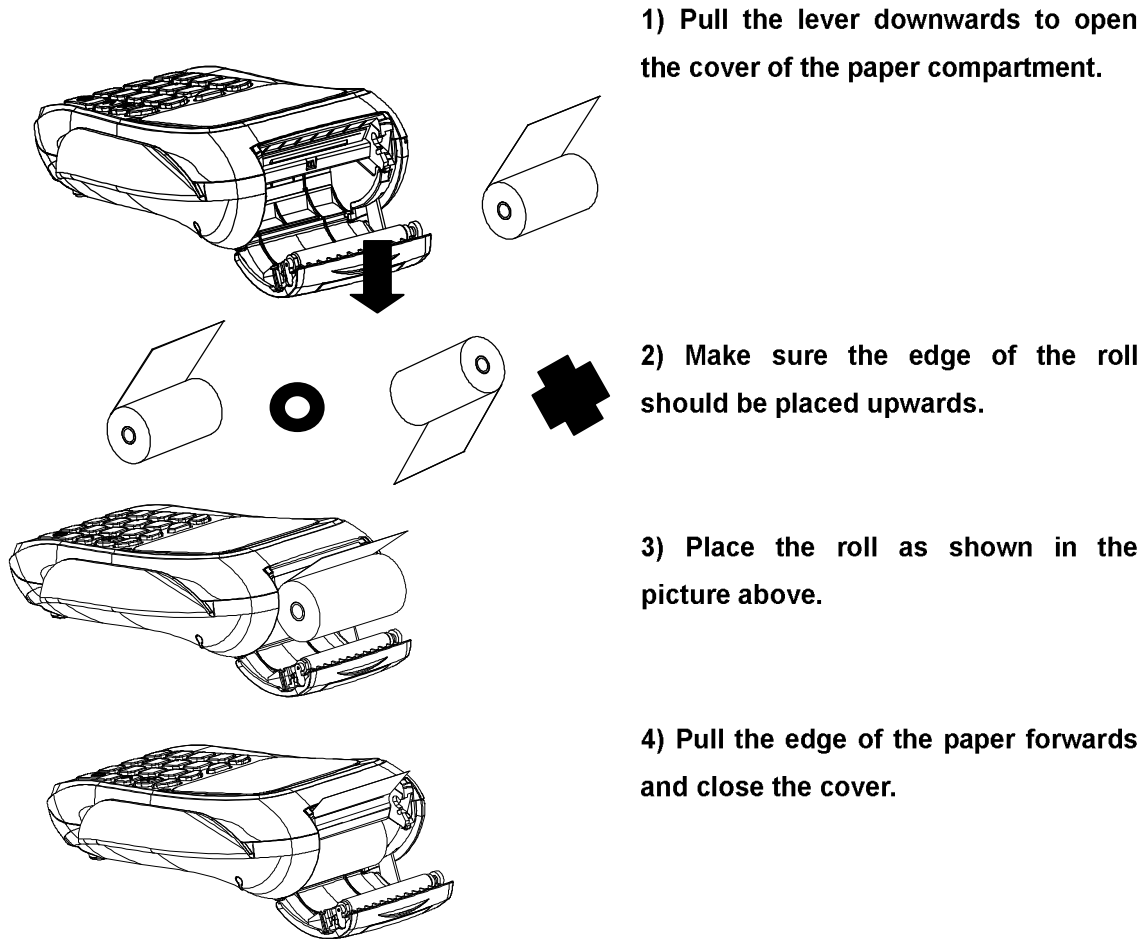
The color of the lamp displays the charging states as follows.

Color of lamp	Charge State	Time required
Red light on	Charging is on	2 1/2 hour
Green light off	80 %	
Green light on	Charging completed	
Red light off	Battery problem or not positioned in right place	

Warning

1. When red light is off, put the battery in position again
2. Regardless of 4~ 5 time trial, in case that red light is still on, consult your provider or retailer.
3. Charging hours can be varied depending on the types of chargers and operating temperature.

7. Changing the printing paper



This device complies with part 15 of the FCC Rules.

Operation is subject to the following two conditions.

1) This device may not cause harmful interference, and

2) This device must accept any interference received, including interference that may cause undesired operation.

* Part 68 is UC230 only.

8. Merchant Menu

8.1 Terminal Application Menu

Credit Authorisation

M&SERVICE

13/01 Wed 14:11

Swipe card or press no. 1
In case of the IC card, insert the IC card.

CREDIT-APP

SWIPE CARD

(when you press no. 1)
Swipe card.

CREDIT-APP

Amount?

\$

Enter amount.

CREDIT-APP

PIN?

Enter PIN.

SEND DATA

PLEASE WAIT

RECEIVE DATA

PLEASE WAIT

TR-SUCCESS

12345678

The terminal
prints a receipt.

Cancelation

M&SERVICE

13/01 Wed 14:11

Press void

CREDIT-CAN

SWIPE CARD

Swipe card

CREDIT-CAN

ORG DATE?

YY/MM/DD

13/02/18

Enter the original transaction date
YY : Year. Ex) in case of 2013, enter 2013
MM : Month. Ex) In case of Feb, enter 02.
DD : Day. Ex) in case the date is 18, enter 18

CREDIT-CAN

ORG APP NO

12345678

Enter transaction number

CREDIT-CAN

Amount?

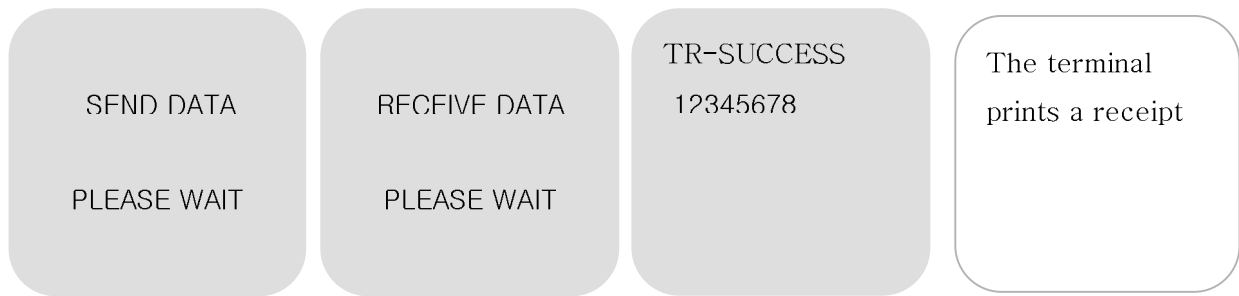
\$

Enter transaction number

CREDIT-CAN

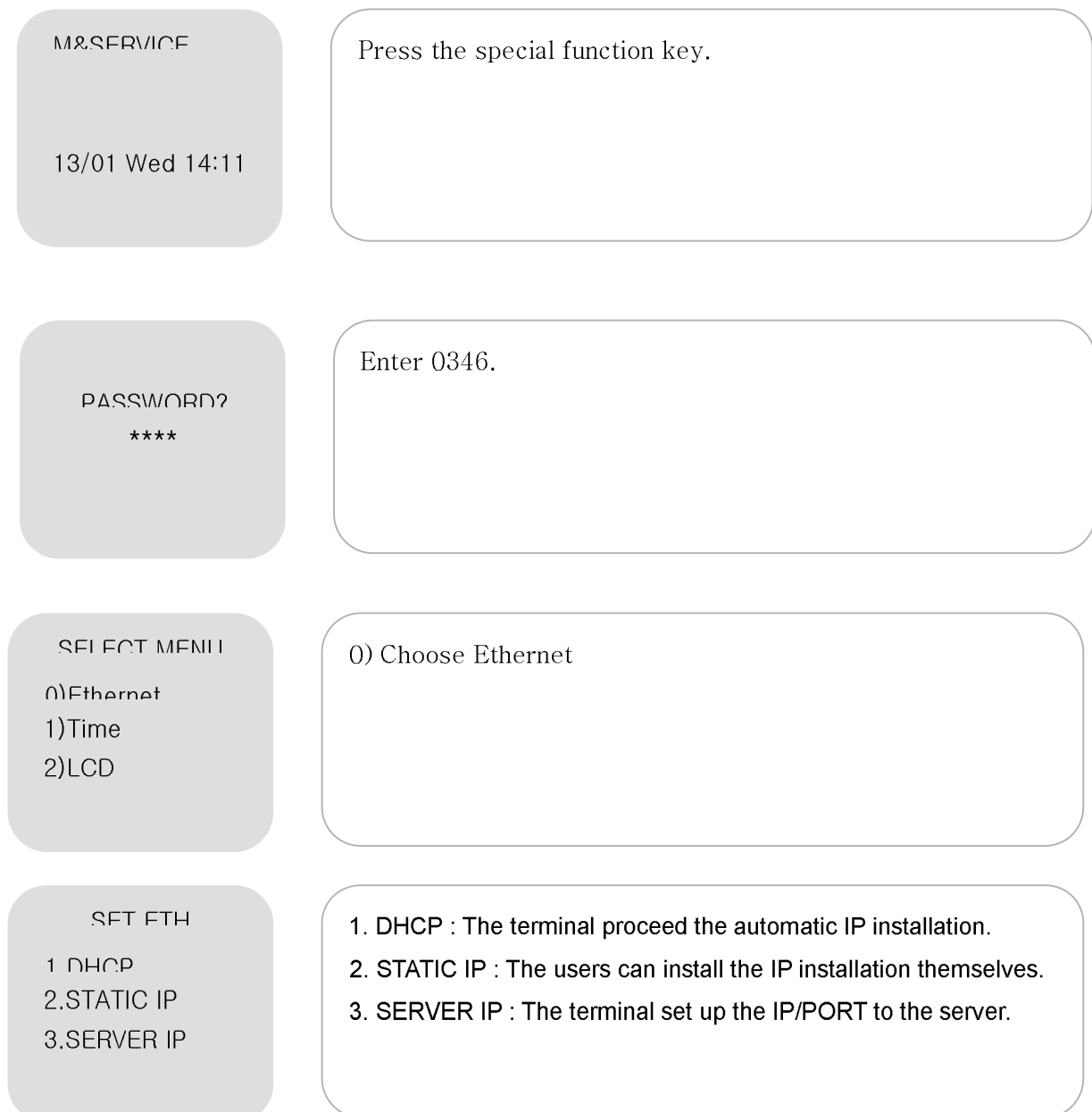
PIN?

Enter the PIN



8.2. Merchant Configuration Menu

Terminal IP installation



Time set up

M&SERVICE

13/01 Wed 14:11

Press the special function key

PASSWORD?

Enter 0346.

SPECIAL MENU

0)Ethernet

1)Time

2)LCD

Choose 1)Time.

SET TIME

CUR:130228113602

SET:130228113601

CUR means current time, and SET means the time to be set up.

Format : YY MM DD hh mm ss

Ex) 2013-02-28 am 11:39:11 -> 130228113911