



User Manual & Quick Guide

Any kinds of displays become an interactive whiteboard with U-Pointer

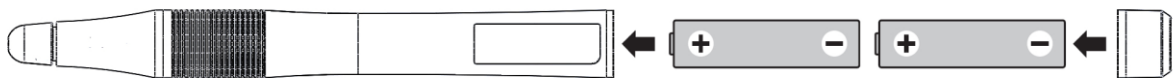
U-Pointer is an Interactive Whiteboard that adopts an image process technology. It captures U-Pointer Pen's movement on display and analyzes the movement. With U-Pointer, any kinds of displays, Projector, PDP, LCD, rear projection display and etc. becomes an interactive whiteboard with high quality and easiness.

Table of contents

Shipping Contents	3
Connecting the U-Pointer to PC	3
Pen Action	4
- Exchanging the Pen Tip	4
Driver Installation	5
Configuration Setting	7
- The U-Pointer Configuration	7
- Alignment View	8
- Calibration	8
Running the U-Pointer	10
Specifications	11
Trouble Shooting	12

Shipping Contents

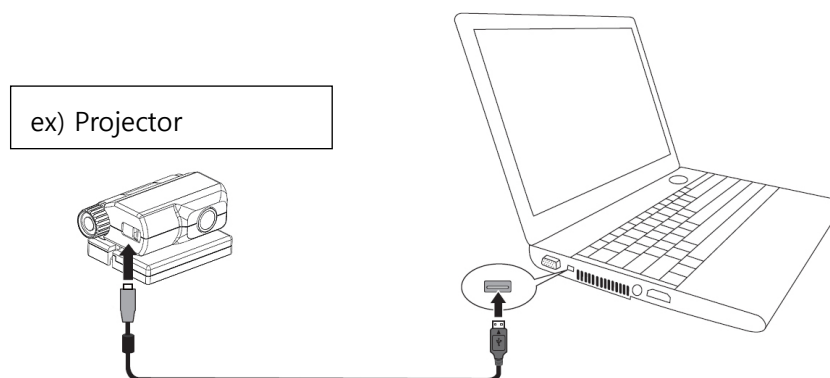
1. **U-Pointer** : Interactive Whiteboard Sensor.
2. **Installation CD** : CD contains U-Pointer driver, i-Pro software and user manual.
3. **Quick manual** : Short cut of how to use the U-Pointer.
4. **U-Pointer Pen** : U-Pointer Pen is a pen type wireless mouse. Before using the pen, insert the batteries into the pen.
5. **Mini USB Cable** : Connects the U-Pointer to PC.
6. **Batteries** : AAA size batteries.
7. **Extra Pen Tip** : 5 extra pen tips for each pen.



Caution : When inserting the batteries into the U-Pointer Pen, make sure the battery polarities are correct.

Connecting the U-Pointer to PC

Use the USB cable* to connect the U-Pointer to PC.



Plug the USB mini-B end into the U-Pointer and plug the USB type-A end into PC.

*. A USB cable of 5 meters is provided. Use a USB repeater cable If you need to extend the length.

Pen Action

The U-Pointer Pen provides the following 4 actions:

Click : Touch an icon or a menu on the screen.

Double Click : Touch an icon or a menu on the screen two times.

Right Button Click : Touch an icon or menu for at least 1.5 seconds.

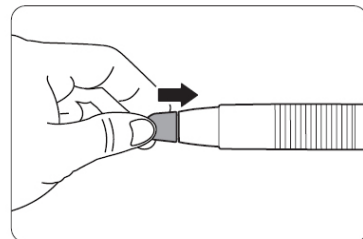
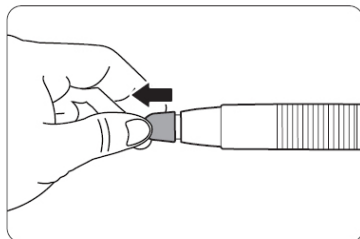
Drag : Touch and drag an object on the screen.

Exchanging the Pen Tip

1. Removing the pen tip

Hold the pen tip with your fingers. Shake and pull the pen tip out of the pen.

1. Inserting the pen tip



Push the pen tip gently, but not abruptly.

Driver Installation

Insert the U-Pointer CD into your CD/DVD-ROM driver. The Installation assistant will run automatically. Follow the instructions on the screen. If the assistant does not run automatically, double click on the “setup.exe” under CD/DVD-ROM directory and the Installation assistant will display.

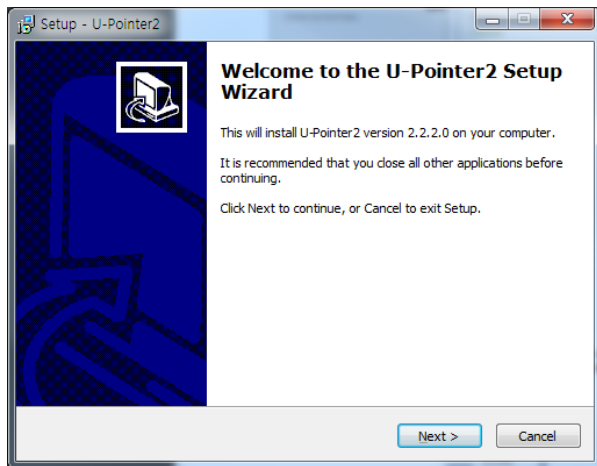
1. Click Install U-Pointer 2 in the installation assistant.



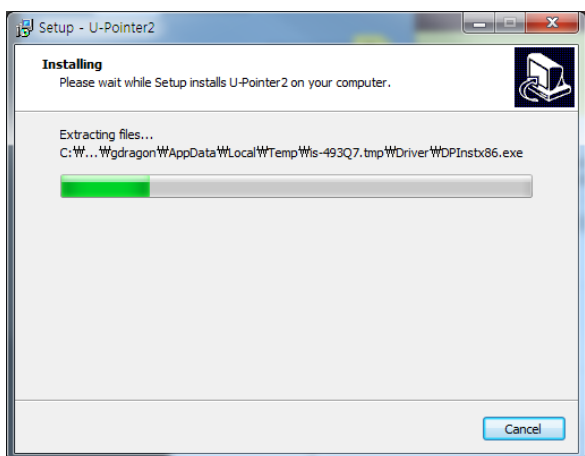
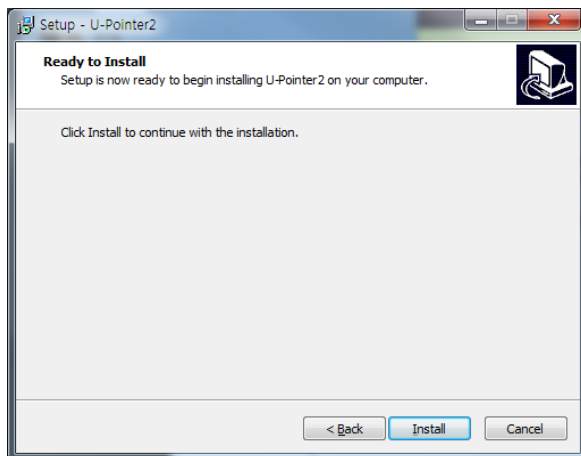
2. Select a language and click “OK”.



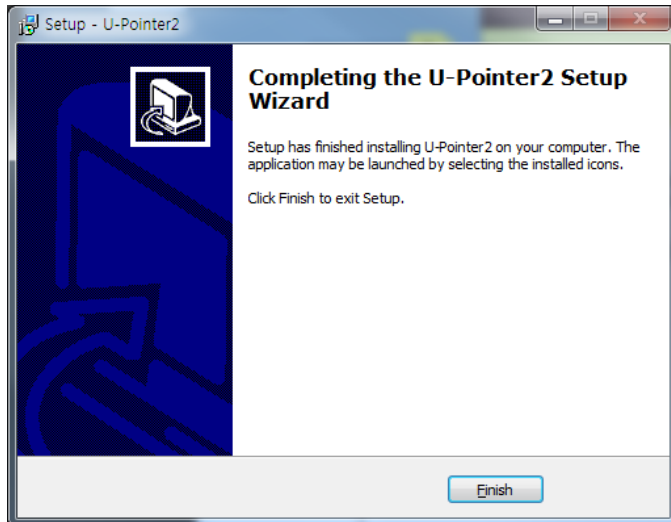
3. The installation dialog box will appear. Click next. During the installation process, it is recommended to close other applications.



4. Click **Install**, the installation begins.

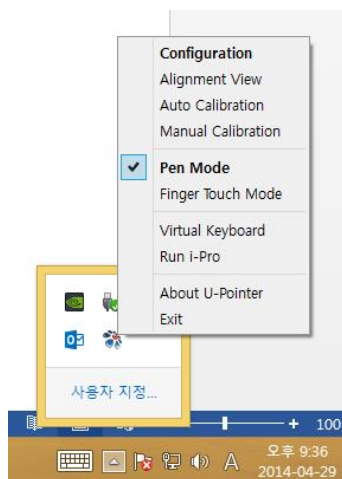


5. The installation ends and a dialog box will appear. Click "Finish".



After the installation is finished,

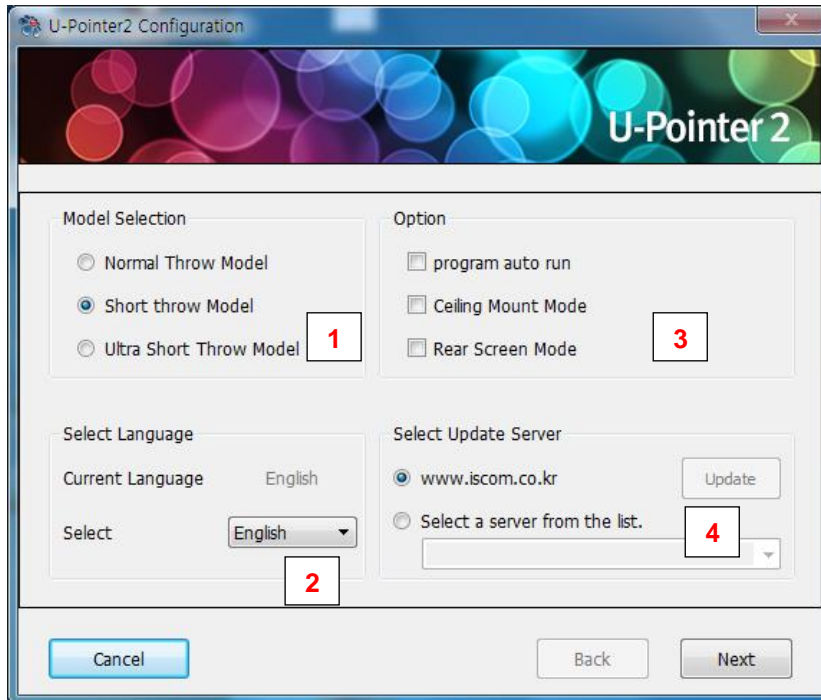
- The U-Pointer icon will be created on the desktop.
- The installation folder will be created on C: directory.



- When running the U-Pointer, the U-Pointer icon appears on the system tray area.
- Click on the U-Pointer icon on system tray area and a popup menu will appear.

When using the U-Pointer for the first time, the configuration window will appear on the desktop to help you configure the U-Pointer.

Configuration Setting



The U-Pointer Configuration

To use the U-Pointer, the proper setting of the U-Pointer configuration is needed.

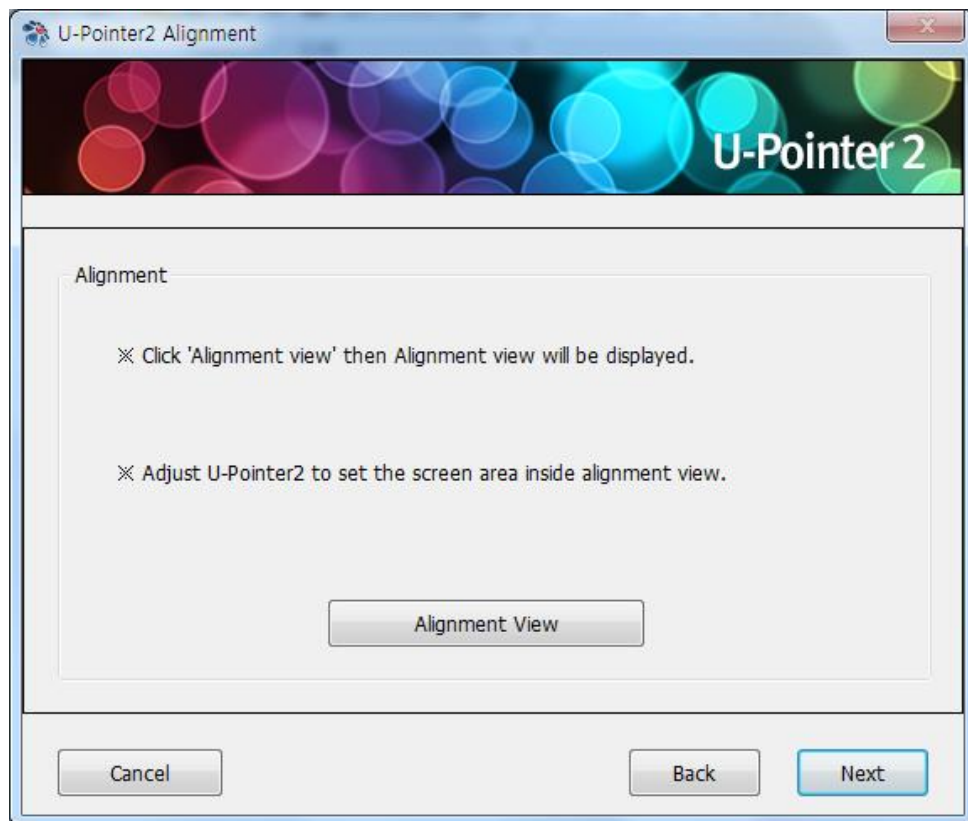
The Configuration setting window will help you to set up U-Pointer correctly.

1. **U-Pointer configuration** : Select the U-Pointer type you're going to use.
2. **U-Pointer Language** : The default language is the same as the language for your operating system. If you want to change the language, click on and then language list will display.
After selecting your preferred language, quit the U-Pointer and start the U-Pointer again.
3. **U-Pointer Option** :
 - Program auto run : Click this item if you want the U-Pointer to run automatically when Windows starts.
 - Ceiling Mount Mode : Click this item if you mount the projector on the ceiling.

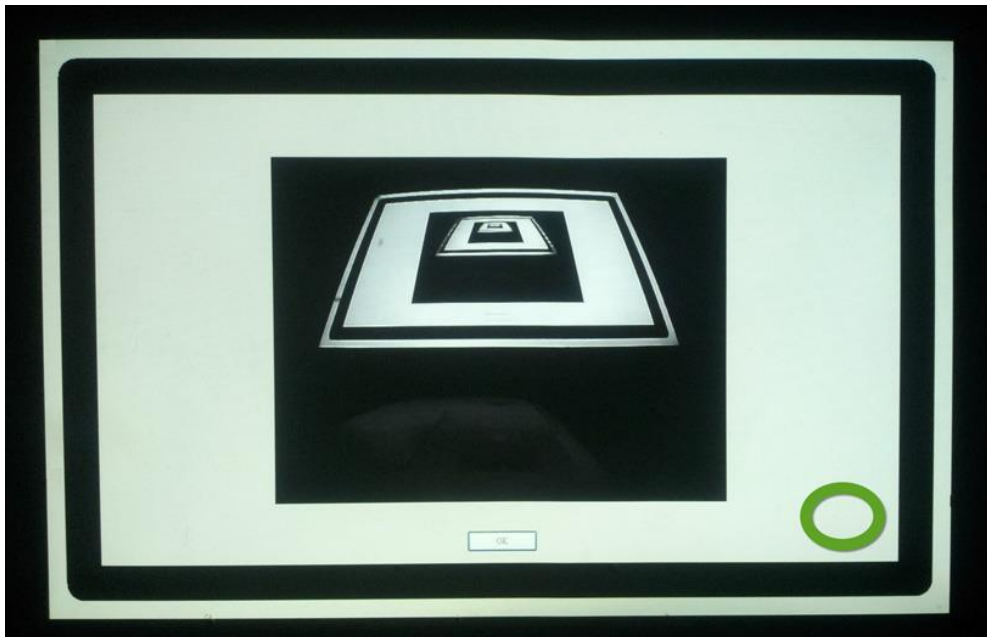
When the projector is placed on the table, do not click this item.
 - Rear Screen Mode : If the projector is installed on the rear screen system, click this item.
4. **U-Pointer Update Server**

Alignment View

The U-Pointer Alignment function is to set the orientation of the U-Pointer to the screen.

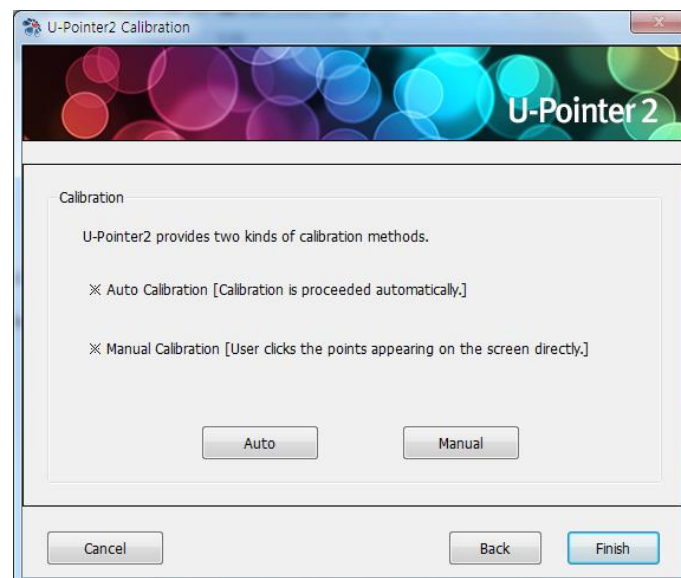


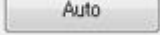
Alignment View : When clicking on the “Alignment View”, the screen image is displayed on the alignment view as illustrated.

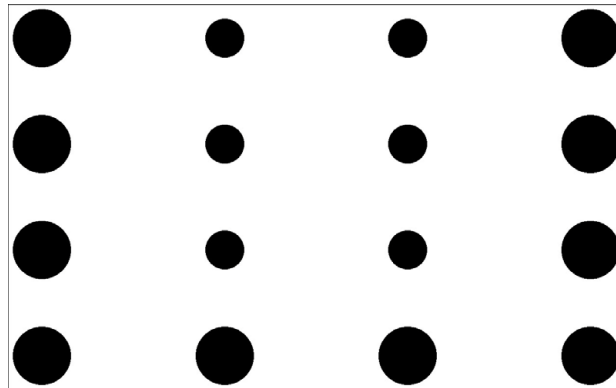


Calibration

U-Pointer provides two kinds of calibration methods : auto calibration and manual calibration.




Auto calibration* : click on  and the calibration process will run automatically.

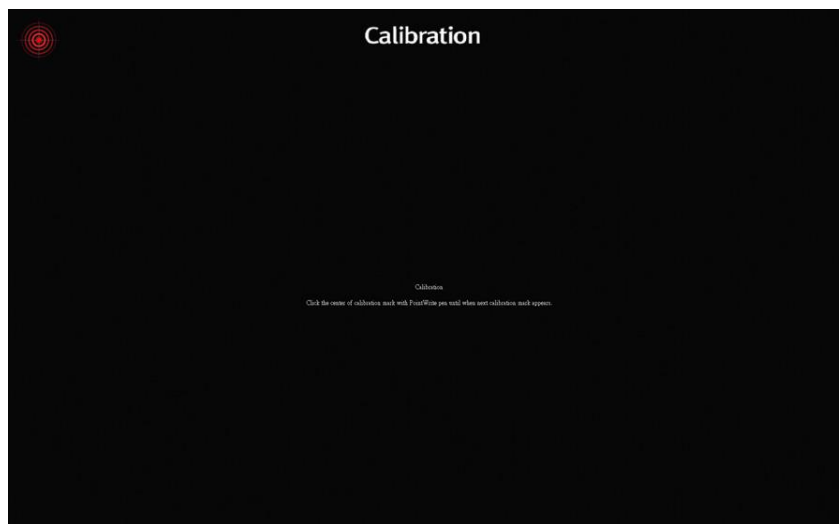


When you choose this method, white image is shown on the screen and the pattern image is displayed.



*. Due to excessive ambient light, auto calibration may fail or the accuracy level may drop.
In this case, please execute the manual calibration.

Manual calibration : click on  and the calibration window will be projected on the screen. Use the U-Pointer pen to click on the center of calibration cursor immediately after it appears. Then the next cursor will display. Repeat this process until the last calibration cursor disappears.

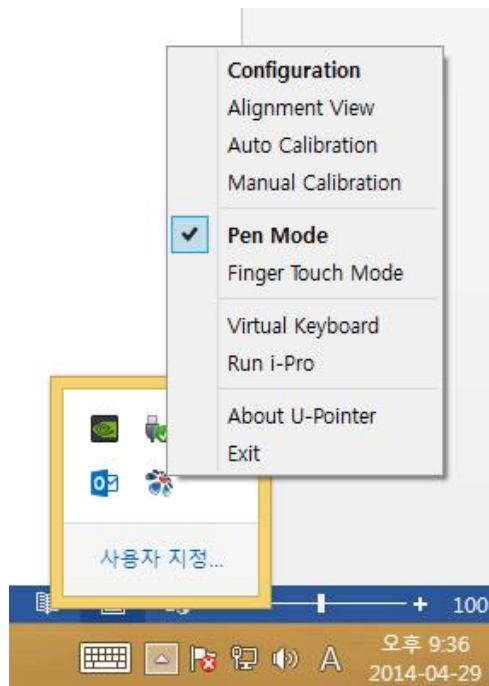


Running the U-Pointer



After you double click on the U-Pointer icon on the desktop, the U-Pointer will initiate and the U-Pointer icon will be created on the system tray area.

Right click on the U-Pointer icon on the system tray area and a pull-up menu appears.



Configuration : Choose this when you want to change the installation position of the projector.

To change the language,

Alignment View : See “Alignment View” on page 9 for details.

Auto Calibration : If the accuracy is not enough when using the U-Pointer, execute the auto calibration again.

Manual Calibration : If the accuracy is not enough when using the U-Pointer or the auto calibration fails, execute the manual calibration.

Pen Mode : Writing and touch are possible in this mode with electronic pen included in a product.

Finger Touch Mode : Finger Touch and writing are possible with laser module as an option.

Virtual Keyboard : If keyboard input is needed, click on the “Virtual Keyboard” and then keyboard will appear on the screen.

Run i-Pro : Choose this when you want to run the “i-Pro”.

About U-Pointer : This menu provides the U-Pointer version information. Click this menu, and then version information window will appear.

Specifications

U-Pointer	
Model name	U-Pointer
Technology	Image Processing Technology
Refresh Rate	60fps
Response Time	16.7ms
Auto Calibration	Yes
Operating Distance	Follow Projector Specification
Multi-User	4
Multiple Operation	2 (Dual)
PC Connection	Mini USB
Power Source	PC USB Power
Max USB Cable Length	15 m (5 m USB cable + Repeater)
OS Supported	Windows: WinXP, Vista, 7, 8 / Mac: Snow Leopard or later
U-Pointer Pen	
Power	AAA Battery*2
Length	15 mm
Weight	35 g
Color	Black

*. The accuracy of auto calibration will be impacted depending on your environment.

Trouble Shooting

1. The U-Pointer pen doesn't operate as mouse on the screen after calibration.

- **Check the connection is correct.**
 - Check the U-Pointer module is correctly connected to computer via USB cable.
 - Check the USB device is detected by computer.
- **USB signal is not stable.**
 - If you're using a notebook, please connect with AC power.
 - If the length of USB cable exceed 10m, the signal repeater is necessary.
- **The interference appears on the screen which impact U-Pointer pen's usage.**
 - Remove extra USB devices (ex.USB reader) on the computer.
 - Remove the infrared devices like remote control and infrared microphone in front of the screen.
 - Remove the reflected accessory like watch or metal necklace.
 - Re-connect USB cable and calibrate again.

2. The Pen doesn't work when drawing.

- Avoid any obstruction on the path of the camera view.
- Check the battery power of the pen.

3. Auto calibration fail.

- **Check the alignment view.**
 - Check the projection pattern is well included from the camera view.
- **Check the environment.**
 - If there is ambient bright shining directly to the screen, please use manual calibration to calibrate.
- **Check the resolution is the same between PC and projector.**



i-Pro 4

Software Manual

Copyright © ISCommunications Co., Ltd. All Rights Reserved.
The contents of this manual can be changed for product enhancement.

Part of or all of this manual cannot be changed or transmitted to other parties without permission of ISCommunications.

Information of i-Pro4

The latest information and software will be provided at the ISCommunications's website : <http://www.iscom.co.kr> or <http://eng.iscom.co.kr>

TEL: +82-51-731-6601, +82-2-2688-6601

FAX: +82-51-731-6604, +82-2-2611-6604, 0303-0500-6601

INDEX

Chapter 1. Introduction	4
Chapter 2. Circumstances	5
A. Cautions Before Use	5
B. PC requirements	5
Chapter 3. Installation	6
Chapter 4. Operation of i-Pro4	9
A. Using Icon	9
B. Using Program group	9
C. Execute by U-Pointer/U-Vision	10
Chapter 5. Screen Constitution and Main Functions	11
A. Consist of Toolbar	11
B. Toolbar	11
C. Consist of Toolbar in Floating Mode	12
D. Detailed Description of Tools in Floating Mode	12
① Activate Main Menu	12
② Choose a Color and Pen Type	13
③ Choose a Mode	13
④ Choose a Transparent Mode, Pen and Diagram Frame	13
⑤ Create a Note	14
⑥ Move a Note	14
⑦ Enlarge a Note	14
⑧ Recording	15
⑨ Eraser Tool	15
E. Detailed Description of Tools in Immovable Mode	15
① Activate Main Menu	15
② Create a Note	16
③ Choose a Color	16
④ Choose a Pen Type	17
⑤ Choose a Transparent Mode	17
⑥ Choose a Pen and Diagram Frame	17
⑦ Choose an Eraser Frame	18
⑧ Check Note's Movement and List	18
⑨ Enlarge a Note	18
⑩ Recording	19
⑪ Application of Window	19
⑫ Choose Objects	19

INDEX

F. Description of Main Menu	20
Chapter 6. Applications	20
A. Application documents	20
B. Application of Clipart	21
C. Check and Delete of Note Movement & List	24
D. Save and Print a Note	26
E. Save and Open a Presentation	27
F. Choose Objects	28
G. Eraser Function	30
Chapter 7. Extra Functions	31
A. Virtual Keyboard	31
B. Emphasize Screen	31
C. Blind Function	32
Chapter 8. Configuration	34
A. Folder	34
B. Note	34
C. Dual Display	35
D. Recording	35
E. Volume	36
F. Options	36
G. Information	37
Chapter 9. Remove Software	37
A. Remove from Program Group	37
B. Remove from Control Panel	38
Chapter 10. Notice	38

Chapter 1. Introduction

'i-Pro' is board software optimized to U-Pointer/U-Vision. You will have more effective lecture with delicate writing and various convenient tools of 'i-Pro' and U-Pointer/U-Vision



'i-Pro' has two representative features.

1. Digital Writing Function
2. Contents Authoring Function

'i-Pro' provides fast and stable writing speed as it optimized to U-Pointer/U-Vision.

Enjoy powerful presentation, education and contents authoring with 'i-Pro'.

Chapter 2. Circumstances

A. Cautions Before Use

‘i-Pro’ supports Windows XP and Vista, and other OS, Mac, Lynux are not supported. It is also operated with U-Pointer/U-Vision. Necessarily, execute this program with U-Pointer/U-Vision.(i-Pro is executed only when U-Pointer/U-Vision is run in your PC. Please execute U-Pointer/U-Vision prior to run i-Pro.)

B. PC requirements

	Minimum requirement	Recommended Requirement
CPU	Pentium 4, 1GHz	Dual Core
RAM	512M Byte	1G Byte
HDD	70M Byte	100M Byte
Graphic Card	128M Byte	128M Byte
OS	Windows XP, Vista, 7	Windows XP, Vista, 7
Others	Microphone, Speaker	Microphone, Speaker

Chapter 3. Installation

A. Software Installation

Insert CD that came with U-Pointer/U-Vision into CD-ROM drive and click “install i-Pro”, and then please select the installation language.

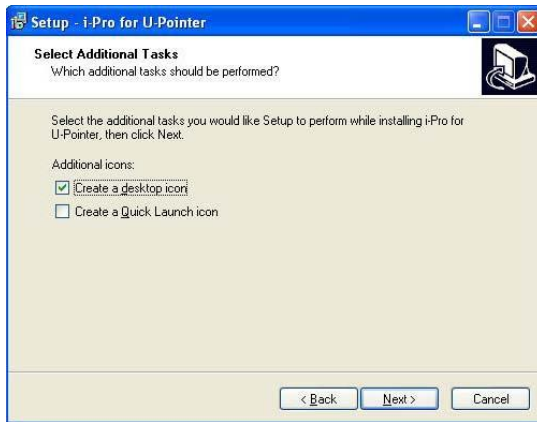


Installation Wizard pops up and click ‘next’.

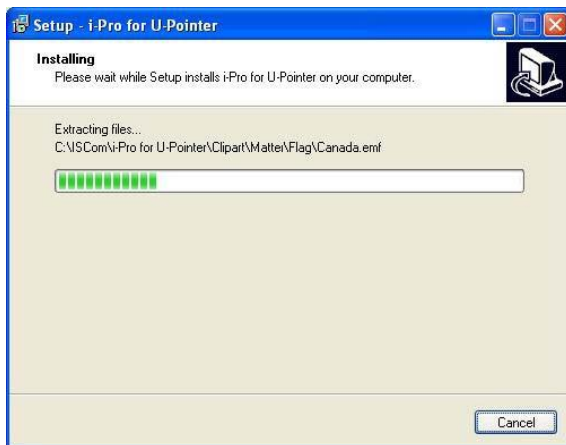


At additional function application, click one of the blanks for creating an icon. Then click 'next'.

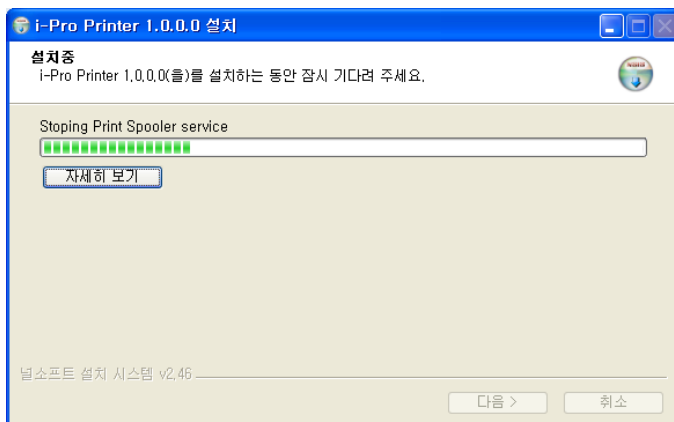
→ In this stage, you can create desktop icon or quick launch icon. Select on your preference and click "Next"



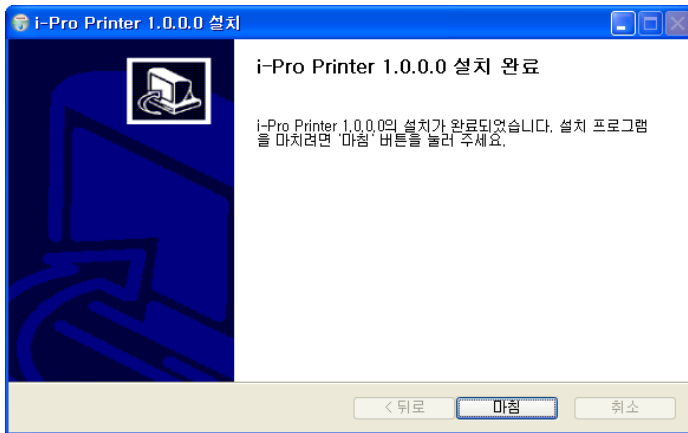
Now, it is ready to install 'i-Pro'. Click 'installation' menu.



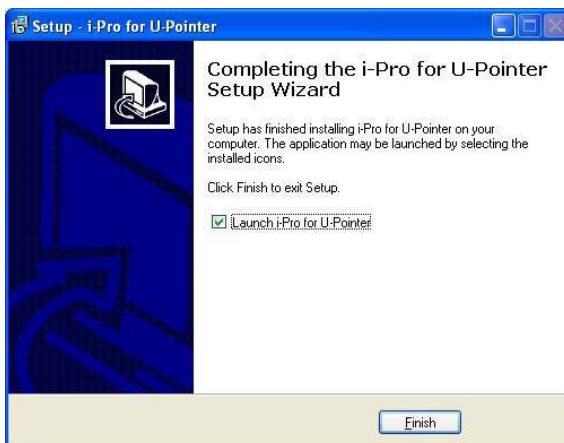
Install "i-Pro Printer" clicking "next"



“i-Pro Printer” installation was completed. Please click the Finish button.



The installation is completed. Click ‘Finish’. If you want to finish installation and execute i-Pro at once, then click ‘Launch i-Pro’ and ‘Finish’.



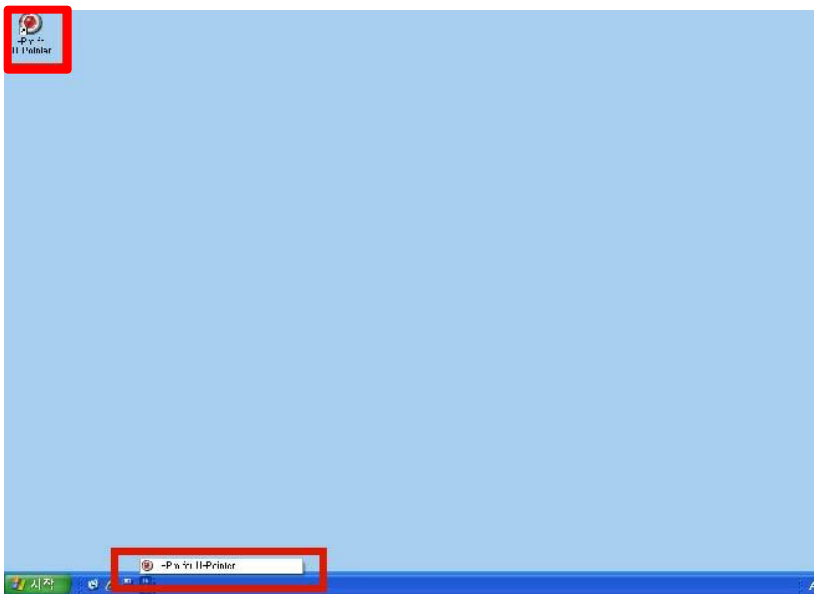
Chapter 4. Executing i-Pro

Notice

Execute U-Pointer/U-Vision prior to run i-Pro. If you execute i-Pro before U-Pointer/U-Vision, an error message is pop up and i-Pro will not work.

A. Executing i-Pro with i-Pro icon

If you select ‘Create a desktop icon’ or ‘Create a quick launch icon’ during installation, i-Pro icon is created on background or quick launch tray. You may execute the i-Pro by clicking one of these icons.

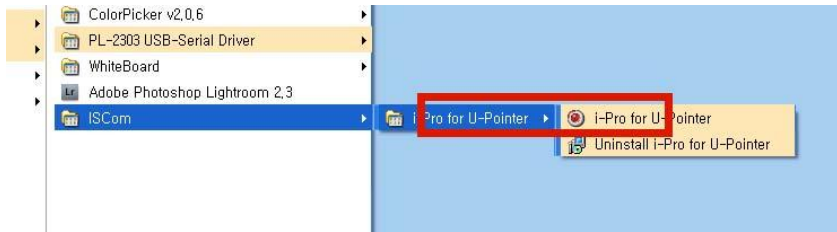


바탕화면과 빠른 실행 영역에서 i-Pro 4 아이콘을 확인하실 수 있습니다.

B. Executing i-Pro with program menu

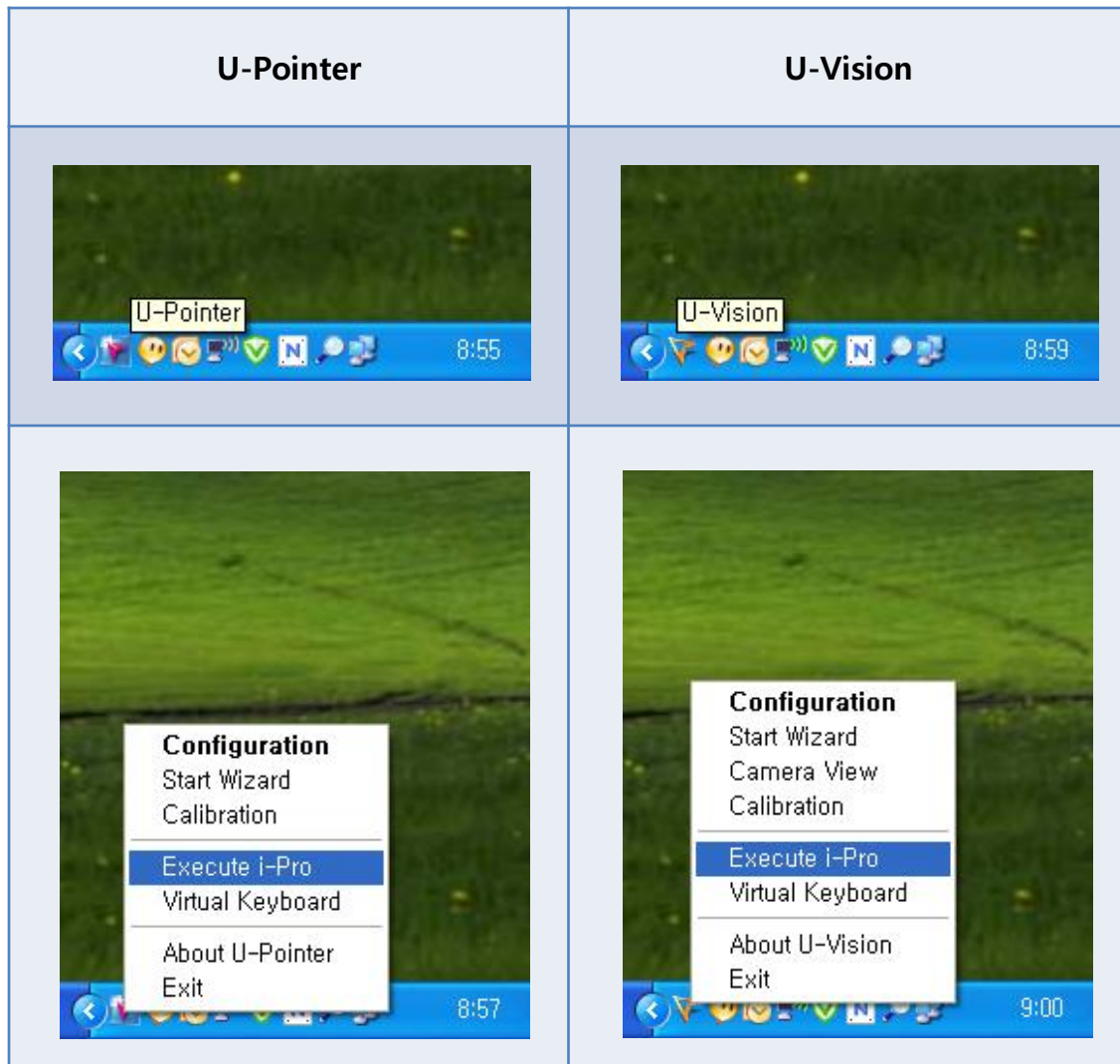
① In case that the i-Pro icon is removed in windows background or you did not select ‘Create a desktop icon’ and ‘Create a quick launch icon’ during installation, you can execute the i-Pro through program menu. Follow instructions below.

- a. Click the “start” button on window task bar.
- b. Click ‘all programs’.
- c. Click ‘ISCom’ in the browsed program menu.
- d. Click ‘i-Pro4’ menu.
- e. i-Pro menu will be browsed and click ‘i-Pro’ icon and then i-Pro will be executed.



C. Execute i-Pro with U-Pointer/U-Vision menu

① i-Pro can be executed by clicking i-Pro icon in U-Pointer/U-Vision menu. When U-Pointer/U-Vision is executed, U-Pointer/U-Vision icon is created on windows taskbar tray. Click U-Pointer/U-Vision icon with U-Pointer/U-Vision pen, and U-Pointer/U-Vision menu will be browsed. In the menu you can find i-Pro icon and click it. I-Pro will be executed.



Chapter5. Screen Constitution and Main Functions

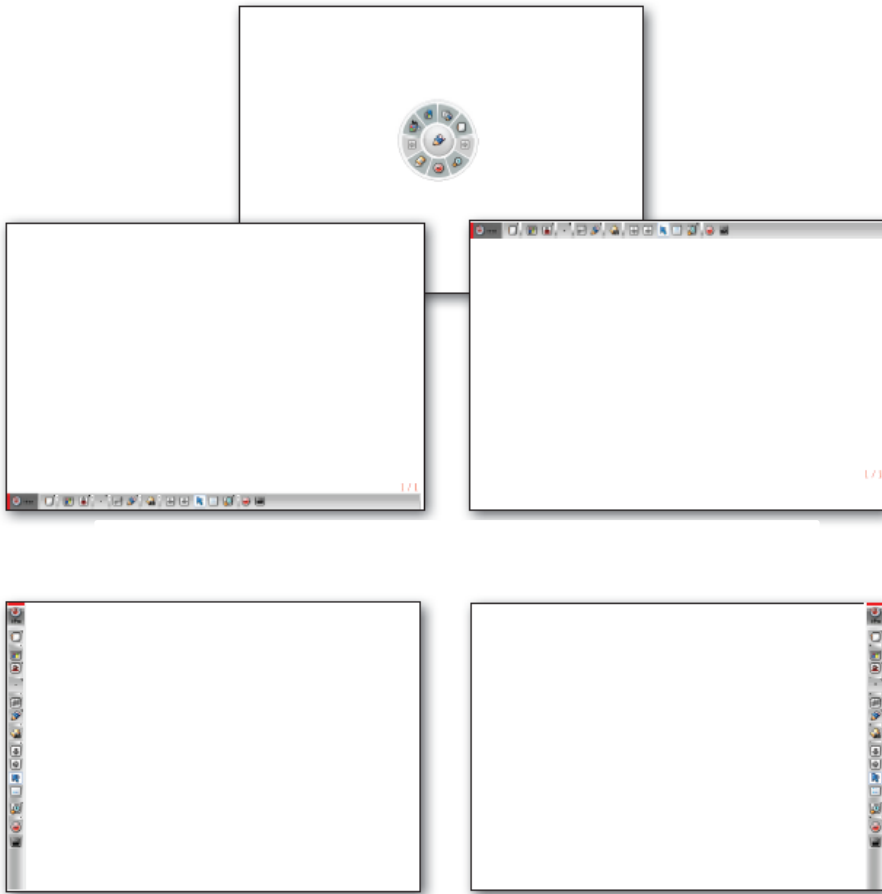
A. type of Toolbar

Types of Toolbar

Toolbar of i-Pro can be located any position according to user's preference. There are straight toolbar and floating tool bar. Straight toolbar can be located any side of window and floating toolbar can be floated to any position by the control of user.

Toolbar type and position are selectable in the main menu of i-Pro and type & position of toolbar are stored when you quit i-Pro for next usage.

B. Toolbar type and position



C. Floating toolbar



Floating toolbar comprises 3 sections A, B, C and each section is connected hierarchically.

A section has two functions

The first function is to show current tool now in use. If you select Pen tool of object tool, proper icon will be displayed.

The second function is to browse main menu of i-Pro. If you right – button –click in this area, main menu will be created.

B section :

Tools and functions of i-Pro are grouped according to their similarity and in the B section, icon for grouped tools and functions are listed.

During your usage, Diagram, eraser and mode switching tool are frequently used. For your convenience, these function group can be switched only by clicking corresponding icon,

In C section, detail function and tools are displayed.

When you click any icon in B section, corresponding icons are appears in section C.

If no selection actions in C section during 5 seconds, C section will be disappears.

D. Description of Tools in Floating Toolbar



① Browsing Main Menu

To activate main menu on floating mode, Press A section for seconds with an U-Pointer/U-Vision pen or click right button of a mouse.



② Selecting Color and Pen thickness

When you click this icon, 16 kinds of color and 4 thickness of pen will be appeared in section C.

Click color or pen thickness on your preference.



③ Switching Function

	When you press this icon during your presentation using i-Pro, Writing mode will be switched to windows mode so that you can run other application S/W of windows.
	In this mode, what you draw, clipart, or diagram can be treated as object. So you can rotate, enlarge, copy, paste the objects.
	You can use Pen and Mouse without switching mode specially.
	You can expand Note's size without any limitation.



④ Choose a Transparent Mode, Pen and Diagram

	When clicked, red underline is displayed and switched to transparent mode. In this mode, every new drawing is overlapped to background, diagram and drawings so that you can see bottom drawings. If you release transparent mode, click the icon once more.
	Pen tools. You can select pen type.
	Brush-pen. You can express thickness according to writing-speed.
	Straight line
	Rectangular
	Rectangular filled with color
	Circle
	Circle filled with color
	Straight line with arrow both ends
	Straight line with one arrow end



Creating note, creating clipart, importing document, capturing screen functions are grouped in this icon.

⑤ Creating a Note

	New note is created. Background color of note is set in “configuration menu”
	Chalkboard Background
	Music Note Background
	English Note Background
	Manuscript Note Background
	Graph Note Background
	Import any ordinary files.
	Insert clipart into note.
	Import every images available in P.C.
	Show Note List



⑥ Page Up/Down

Note Page Up and down. Activate only when two or more notes are created.

⑦ Magnifying

Magnifying selected note region or enlarge all note area to 100% to 400%. Size and position of All objects in the note varies according to magnifying ratio.



100%	Return to original note size
200%	Magnifying note to 200%
300%	Magnifying note to 300%
400%	Magnifying note to 400%
	Magnifying selected region. If you want to return to original size, click “100”
	Magnifying and reducing the screen by each grade



⑧ Recording




What you written on the note during your lecture is recorded in movie file format.

※ What you written on the note during your lecture is recorded in movie file format.



⑨ Eraser Tool

Tools for erasing object in the note. Erase all and partially are supported.

	Erase all objects in the note
	Erase object selectively
	Erase Region : objects in selected region will be deleted

E. Description of Fixed Toolbar

Toolbar can be positioned 4 sides of window, but shape and function are same.

① Browsing Main Menu



To activate main menu, press the i-Pro icon for seconds with U-Pointer/U-Vision pen or click right button of PC mouse.

② Creating a Note

Click the icon marked below for 0.3 second and the menu creates a note is opened. To create a note checked default, click the icon shortly or the bar next to the icon.



	New note is created. Background color of note is set in "configuration menu"
	Chalkboard Background
	Music Note Background
	English Note Background
	Manuscript Note Background
	Graph Note Background
	Import any ordinary files.
	Insert clipart into note.
	Import every images available in P.C.
	Show Note List
	Second menu option.

③ Choose a Color

Click the color icon or a color browsing bar next to the color icon then color menu will be opened.



④ Pen thickness control

Click the pen thickness icon in the picture and then current pen thickness will appear. To control pen thickness, click pen thickness control icon next to pen thickness icon. Pen thickness control slide will appears and drag the slider.



⑤ Transparent Mode

When clicked, normal writing mode is switched to transparent mode. In this mode, every new drawing is verlapped to background, diagram and drawings so that you can see bottom drawings through upper drawing. If you want to release transparent mode, click the icon once more.



⑥ Select Pen or Diagram

Pen/diagram menu is browsed by two ways. The first is to press Pen/Diagram icon for a while and the second is to click browser icon next to Pen/Diagram icon.



You can select diagrams or pen in the browsed menu. When pen or diagrams are selected, selected icon appears in Pen/Diagram icon.





	Pen tools. You can select pen type.
	Brush-pen. You can express thickness according to writing-speed.
	Straight line
	Rectangular
	Rectangular filled with color
	Circle
	Circle filled with color
	Straight line with arrow both ends
	Straight line with one arrow end
	Second menu option.

⑦ Choose an Eraser

Press eraser icon for a while and then eraser sub menu will be appeared or clicking browser menu bar next to eraser icon do the same.






After you select the type of eraser in sub menu, the selected eraser icon will appear in the eraser icon area.

	Erase all objects in the note
	Erase object selectively
	Erase Region : objects in selected region will be deleted
	Second menu option.

⑧ Page Up/Down and Note list

Function to move previous or next page. This function is activated only when two or more notes are created.



	Move to previous note
	Move to next note
	Note list : in the note list window, you can open wanted note by double clicking or delete note selectively

⑨ Magnifying

Magnifying selected note region or enlarging all note area to 100% to 400%. Size and position of All objects in the note varies according to magnifying ratio.





⑩ Recording

What you written on the note during your lecture is recorded in movie file format in this mode. By means of this function, you can create lecture contents and make an on-line service.

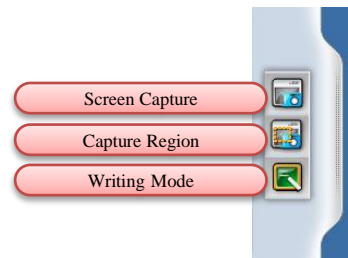
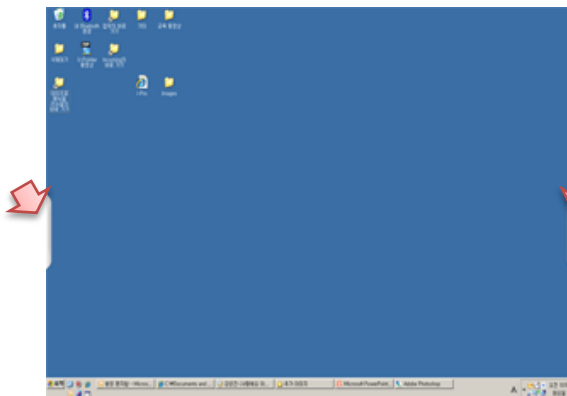


※ Windows Media Encoder provided by Microsoft should be installed to your computer to use recording function of i-Pro

	Record start icon: when clicked this icon becomes in-active mode for preventing double operation.
	Record stop icon: This icon becomes activated only when recording is initiated.

⑪ Switching to Windows Mode

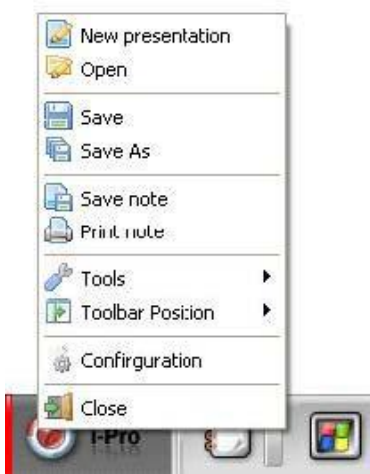
Not quitting i-Pro, you can switch to Windows mode and run other application programs.

**⑫ Objects control mode**

In this mode, what you draw, clipart, or diagram can be treated as objects. So you can rotate, enlarge, copy, paste the objects.



F. Description of Main Menu



New Presentation :	Start new presentation
Open :	Open stored lecture notes
Save :	Save current presentation
Save as :	Save current note with designate name
Save note :	Save note in picture file format
Print note :	Print note
Tool :	selecting virtual keyboard, spotlight, blind.
Toolbar Position :	selecting toolbar position in windows frame
Configuration :	setting configuration of i-Pro
Close :	finishing i-Pro

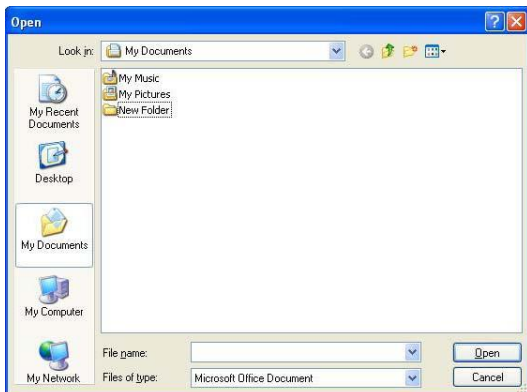
Chapter 6. Applications

A. Importing documents

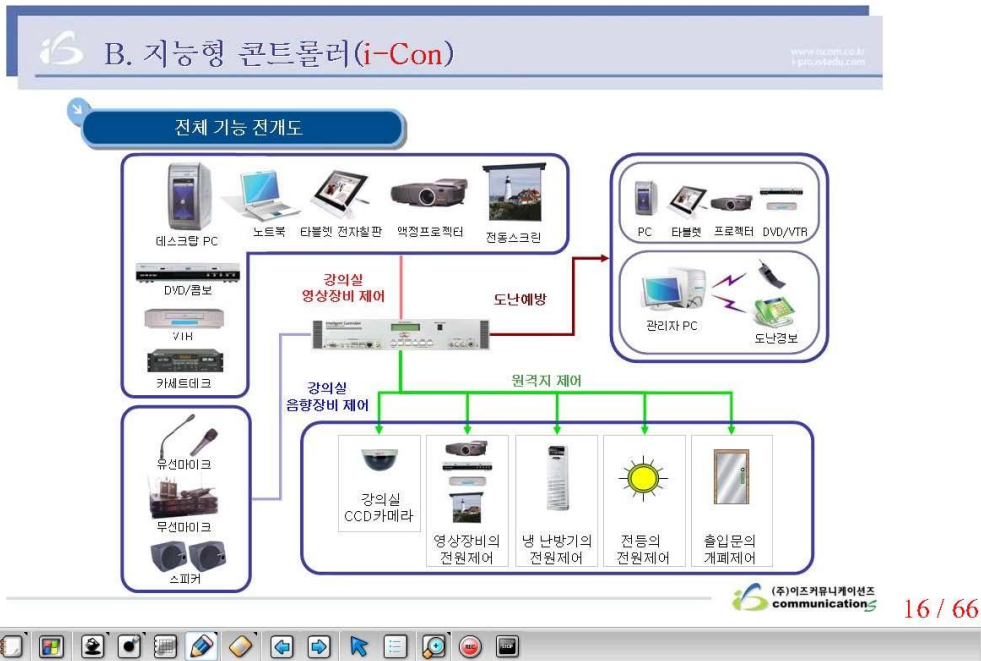
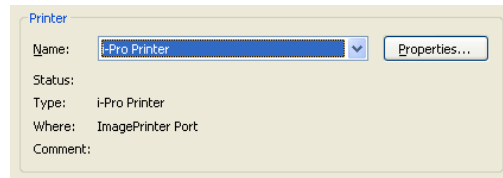
Pro provides 5 kinds of backgrounds (refer to Chapter5. D-⑤, E-②) for your convenience during presentation. In addition to this, default 350 number of clipart and your Microsoft Office Documents can be imported for your presentations.

To import Microsoft office documents, follows the instructions hereafter.

- As described in D-⑤ and E-② of chapter 5, click "import documents".
- A dialog box will be appeared as following and the file imported will be opened accordingly.



- c. When the selected file opened, click “print” in menu as you do print actually
- d. Terminate “every opened applications” after completing “print” .
Printer was set as “i-Pro Printer” automatically as photo as below when you use “i-Pro”,
Therefore, you can import every available documents regardless of “Windows mode” or “Intelligent mode”
through printing in “i-Pro Printer”



- d. To import Microsoft office documents, Microsoft Office should be necessary in your PC and works properly.
You can import “Office-Document” as well as “PDF file”

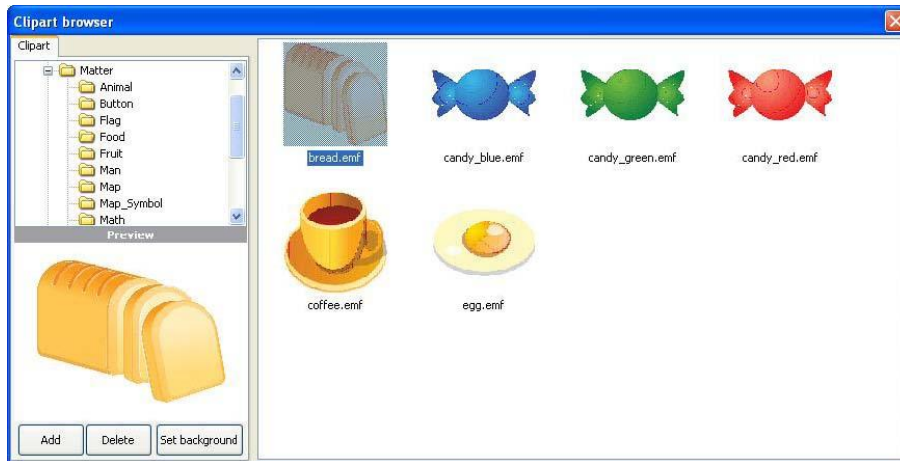
B. Application of Clip Art

i-Pro provides 350 clipart for your presentations and interface for adding user clipart.

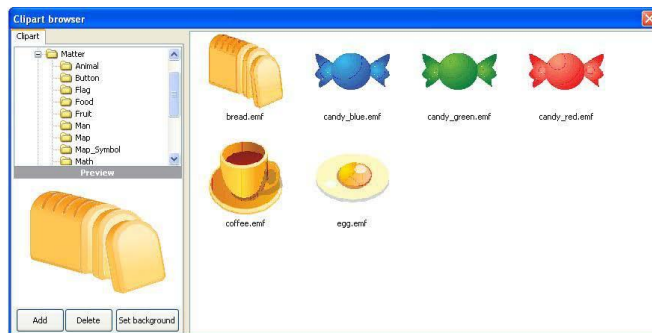
To use clipart, follow the instructions.

- Click the clipart icon [clipart icon]. Refer to Chapter5. D-⑤ and E-②.
- Clipart dialog box is opened.

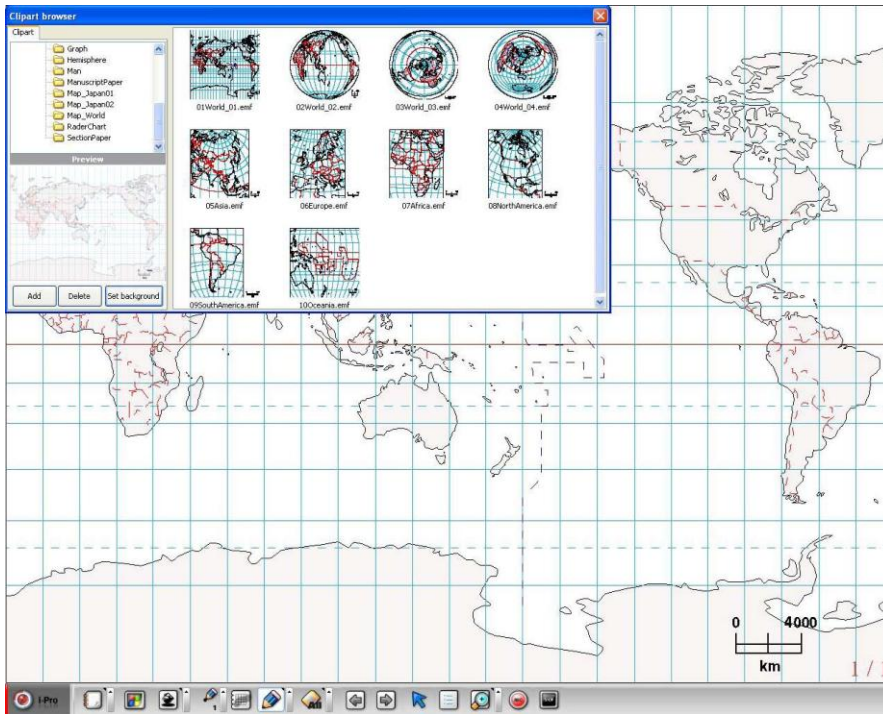
c. selecting clipart directory and then thumbnail of clipart is displayed on the right. If you click thumbnail, you can see magnified clipart in preview window.



d. Double click clipart or drag one of the clipart into note area and then clipart is inserted into the note.



e. To set clip art as a background, select a clipart and click 'set background' button. Only one clipart can be designated as background for each note.



f. Adding clipart : Click 'Add' button to add user clipart to i-Pro clipart folder and then dialog box appears.

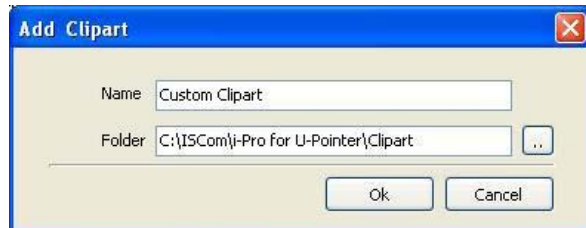


g. Click Browser button [browser button icon] and then folder dialog box appears.

Designating clipart folder and input clipart folder name. Click “Confirm” button.

Clipart folder is now created in the i-Pro clipart directory.

Be sure sub folders of designated clipart folder is added to i-Pro clipart folder.

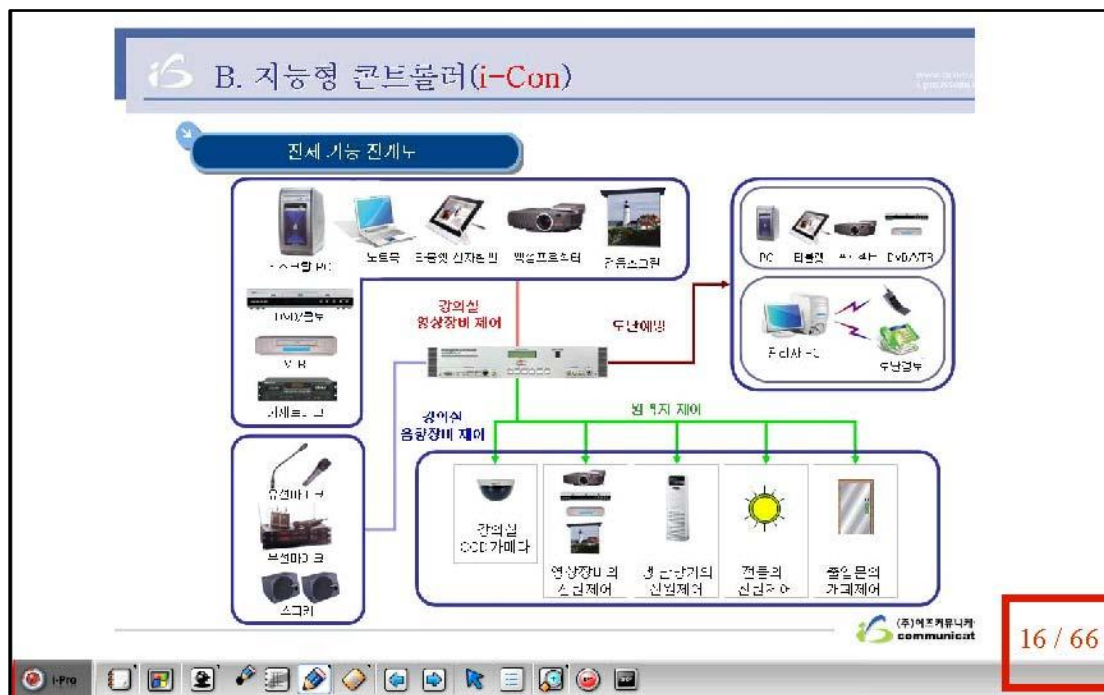


h. Added clipart folder is available until when you delete the clipart folder

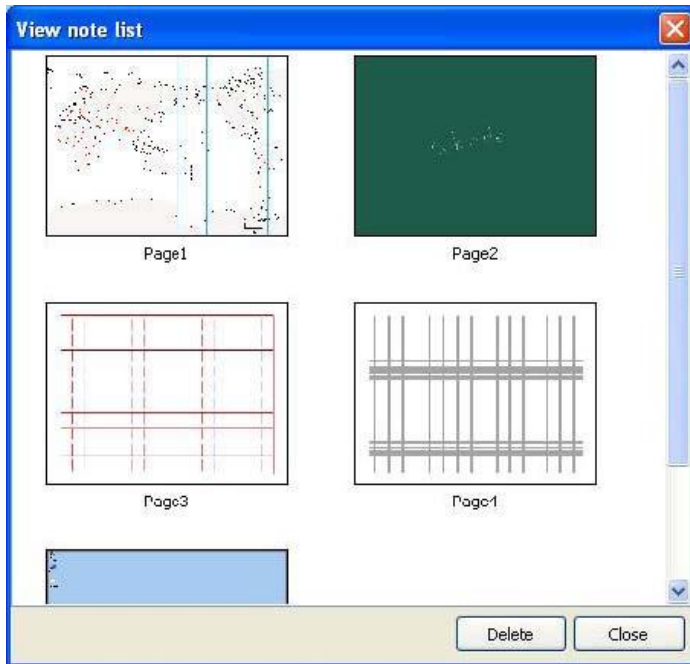
i. To remove the added clipart folder, select and click ‘delete’. But, the clip art provided by i-Pro is not deleted.

C. Note list and delete

① During presentation, number of notes are created or prepared lecture notes are used. You can check total number of notes and current page in the right lower region of note frame.



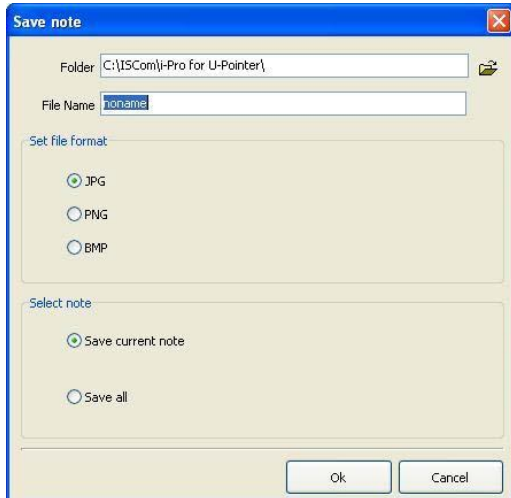
- ② Note List : As explained in Chapter5. D-⑤ and E-⑧, click and check all the notes created until now.



- ③ To move to selected note, double-click it with a U-Pointer/U-Vision pen or mouse.
- ④ To delete note, select note to be deleted and click 'Delete' of the box.
- ⑤ To delete number of notes, use drag function of U-Pointer/U-Vision Pen or mouse.
Drag a certain region so that the notes to be deleted are included in the region.
Click 'Delete' button.

D. Save and Print Note

① Save Note



a. Your presentation notes can be saved as picture file format. Click main menu and 'Save note'. Refer to Chapter5. F-①

b. Designate folder to be saved and input file name

c. Select picture file format and select current note or all

d. Click 'Confirm'.

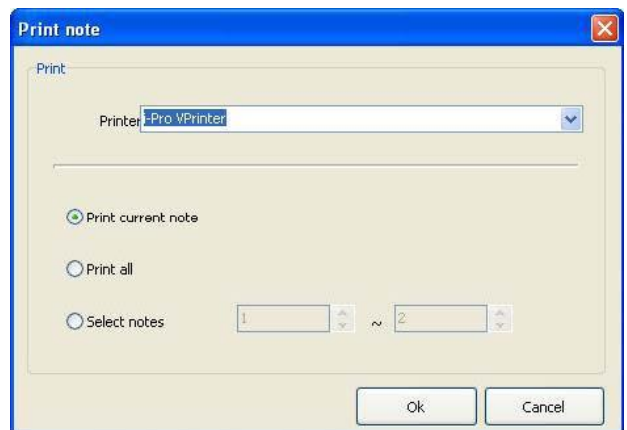
② Print Note

a. Your presentation notes can be printed. Click main menu and 'Print Note'. Refer to Chapter5. F-①

b. Select printer connected to your computer.

c. Choose notes to be printed. You can select current note, all notes and selected notes using print option.

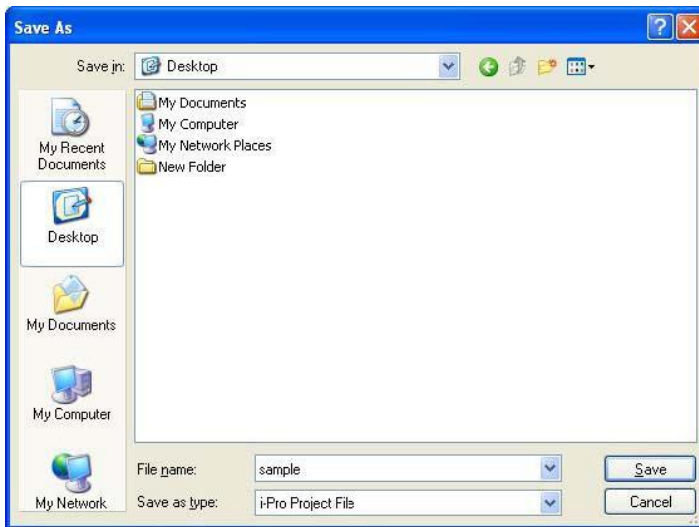
d. Click 'Confirm'



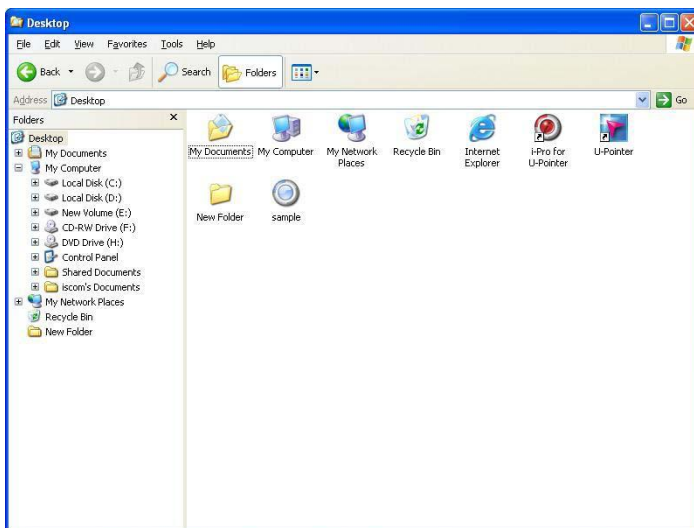
E. Save and Open Presentation

① Your presentation is saved as a file and the file can be used for your other presentation using other PC. Only requirement of PC is that i-Pro is installed.

- a. To save your presentation, click the 'save' in main menu. Refer Chapter5. F-①.
- b. Dialog box will appear. In the dialog box, designate folder and input file name. Click 'Save', then file is saved on the folder in .ist file format.



- c. Open the folder in which the presentation is saved. You can find the file with i-Pro file icon.



d. To open the presentation, you can use windows search function or 'open' menu of i-Pro.

When using windows search function, search presentation file in the folder and double click it.

When using 'Open' menu of i-Pro, click 'Open' menu. Select file and click 'Open' button. Refer to Chapter5. F-①.



② 'Save As' menu of i-Pro will support you to save current presentation with another name.

③ To start new presentation after finishing current presentation, click 'New Presentation' Menu and proceeds a new presentation. Refer to Chpater5. F-①. Before new presentation is initiated, Dialog box that asks whether to save former presentation or not. Click 'Yes' or 'No'.

F. Object

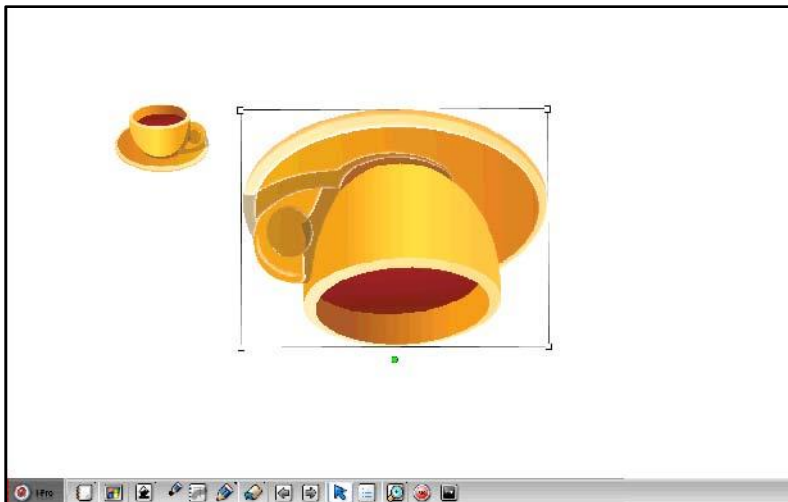
Clipart or your drawings can be treated as objects so you can adjust size, rotate, drag as you want.

a. To switch to Object Control Mode, click 'object control menu' of toolbar. Refer to Chanpter5. D-② and E-⑫.

b. After entering Object Control Mode, the background color of menu is changed () and the cursor shape becomes is In object select mode, the button is changed to ().

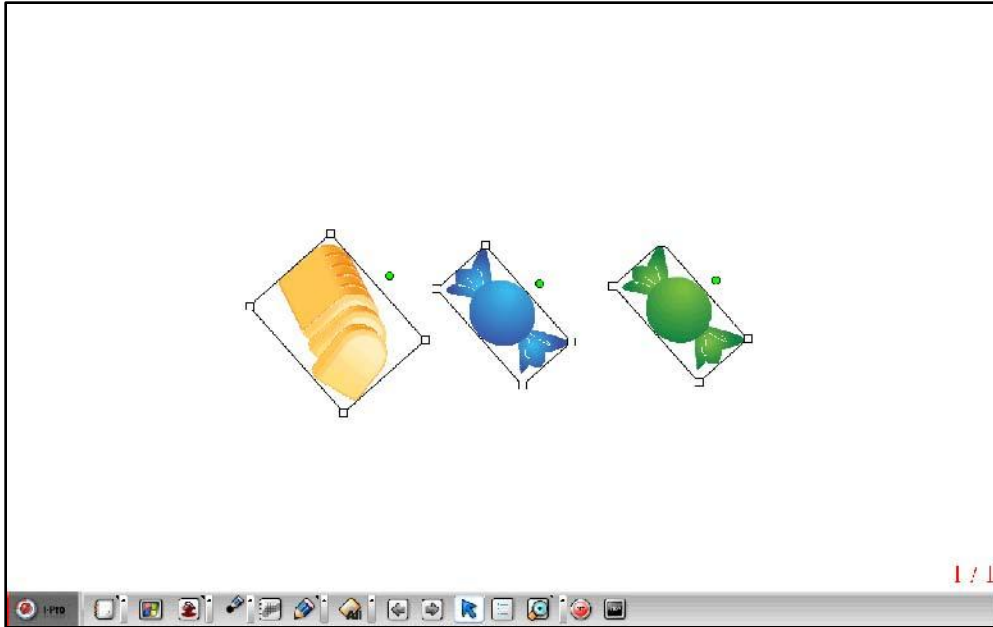
c. Click the object you want to reshape; supporting lines around the selected object appears like Power Point Object. In this state, you can reshape the object.

d. The below is sample image for showing reshape object. The original shape of cup is change in this mode.



e. If you want to treat number of objects at the same time, like Power Point, drag some area in which target objects are included and reshape them.

Several objects are selected at once.




f. i-Pro provides object control popup menu. Click right button on the selected object area. Popup menu is appeared and control the objects.

Cut	- Cut: Cut a selected object.
Copy	- Copy: Copy a selected to
Paste	- Paste: Paste an object copied or cut.
Delete	- Delete: Delete selected object.
Select All	- Select all: Select all objects in current note.
Reset to initial shape	- Reset to initial shape: Reset the selected object to initial shape.


G. Use an Eraser Function

① i-Pro provides three types of eraser. Erase All, Erase Object, Erase Region


a. Erase all

Click 'Erase all' button[]. All clip art and writings are erased but background is not erased. Refer to Chapter5. D-⑧, E-⑦.

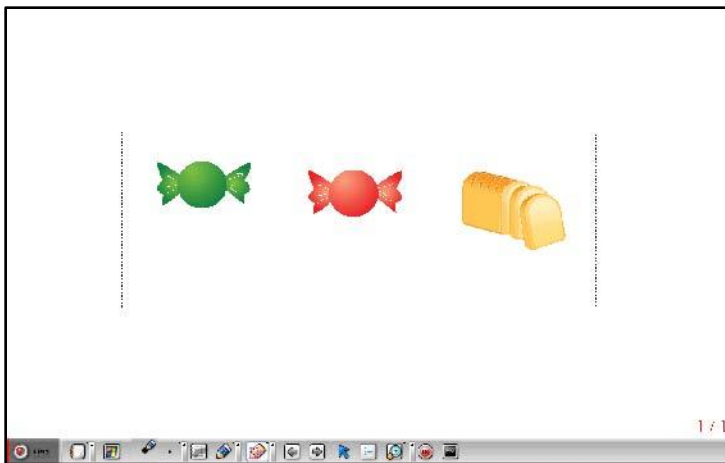
b. Erase object

Click 'Erase object'[] and click clipart or drawing on the note. The clipart or drawings will be erased respectively. Refer to Chapter5. D-⑧, E-⑦. Refer to Chapter6. F to select objects.

c. Erase region

Click 'Erase region'[] and drag region in which clipart and drawings to be erased are included.

When click 'Erase region' and then shape of mouse cursor becomes cross(). If dragged a region, the selected region is displayed as dotted rectangular. After dragging, all the objects in the rectangular are disappeared at once.



d. Erase by object menu

As explained in F-①-f, objects can be erased by clicking 'delete' function in object menu.

Chapter 7. Extra Functions

i-Pro provides several functions to increase efficiencies during your presentation.

A. Virtual Keyboard

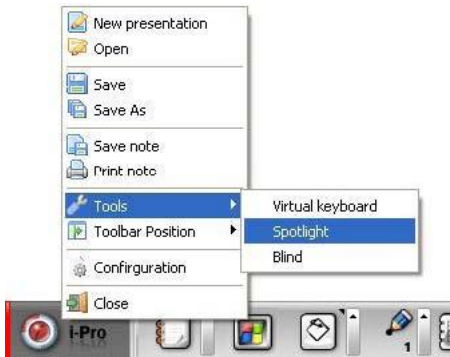
- ① In some cases, you may need to input letters by means of keyboard during you use U-Pointer/U-Vision. In this case, you can input letters using virtual keyboard that will appear on window.
- ② Click virtual keyboard submenu in main menu of i-Pro. The virtual keyboard will be appeared on the window. Input letters by pressing virtual keyboard. Refer to Chapter5. D-①, E-①

Virtual keyboard is activated.

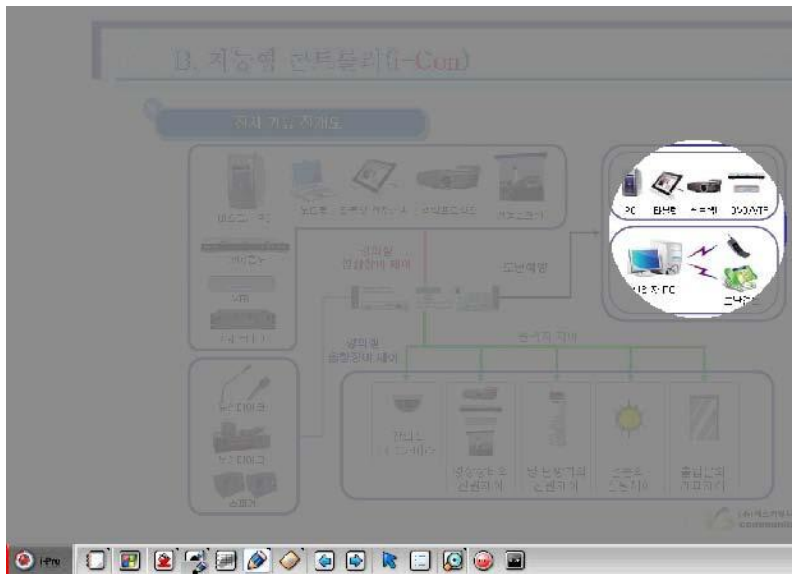


B. Spot Light

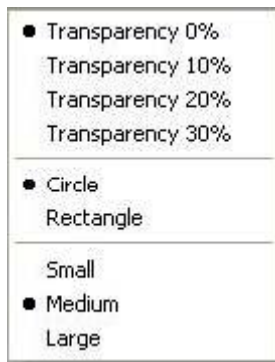
- ① To attract audience's attention, emphasizing a target part of a note is necessary. A spot light function is provided in i-Pro.
- ② Spot light function is activated by selecting 'Spot Light' function in Tool of main menu. Refer to Chapter5. D-① and E-①.



- ③ After spot light function is activated, color of note area becomes transparent dark gray and spot light will appear. You can move the spot light by dragging with U-Pointer/U-Vision Pen.



- ④ After the spot light function is activated, Spot light control and closing box will appear on right upper corner of note.



Transparency 0% : 0% transparency of gray screen.

Transparency 10% : 10% transparency of gray screen

Transparency 20% : 20% transparency of gray screen

Transparency 30% : 30% transparency of gray screen

Circle : Spot light shape to be circle

Rectangular : Spot light shape to be rectangular

Small size : Small size of spot light

Middle size : Middle size of spot light

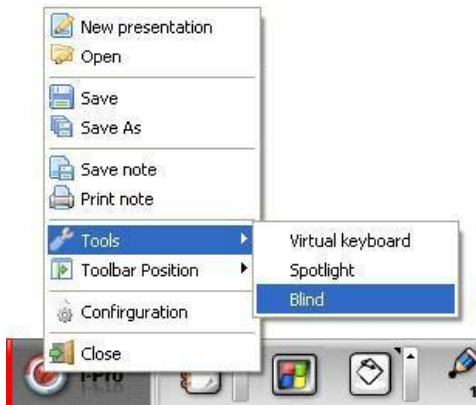
Large size : Large size of spot light

C. Blind

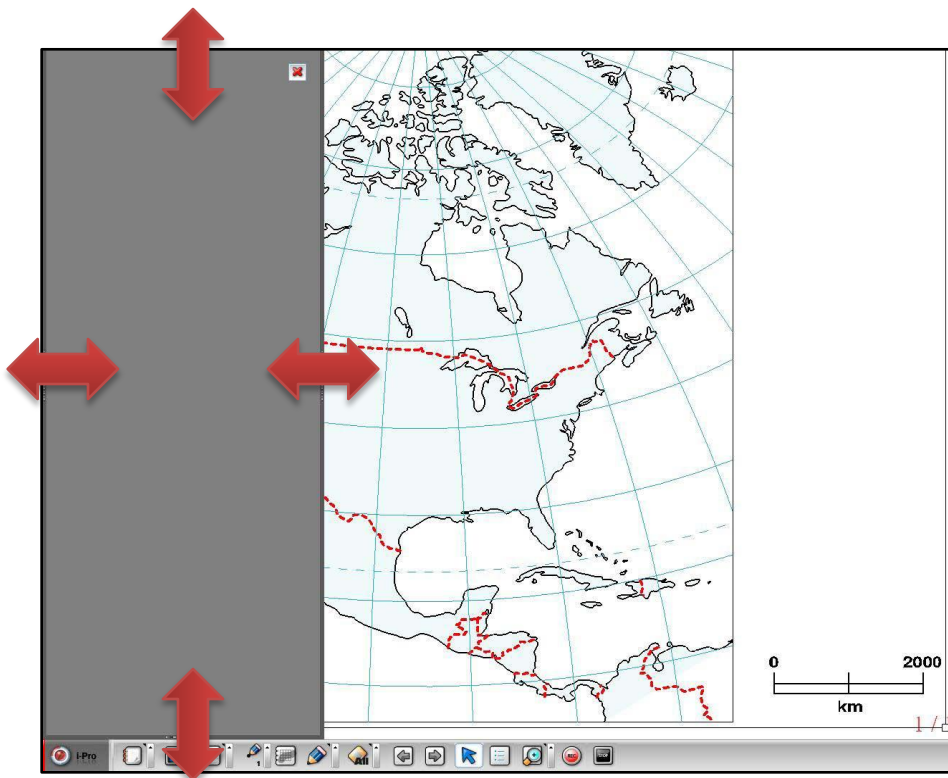
- ① Like a blind in the glass window, Blind of i-Pro blinds all screen area and open by dragging from side of window so that part of note is exposed.

You can open note from any side of windows frame.

- ② Click Blind function in Tools menu in main menu of i-Pro. And then all note is blinded and closing button will appear on right upper corner. Refer to Chapter5. D-① and E-①



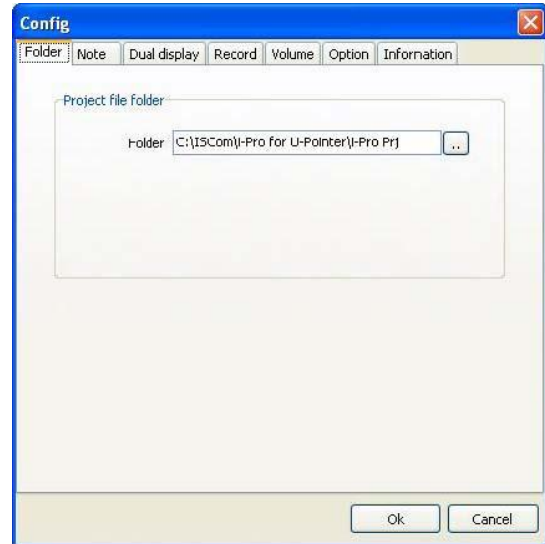
③ Place cursor to any edge of note frame, and then cursor image becomes both end arrow line. In this state, drag cursor. Note will be opened according to dragging.



Chapter 8. Configurations

A. Folder

After i-Pro is installed in your PC, default folder to save note and presentation is 'i-Pro Prj' folder created under "IScom/i-Pro" directory. To change this folder, use Folder configuration. In the dialog box, click 'folder' and designate folder in your preference.



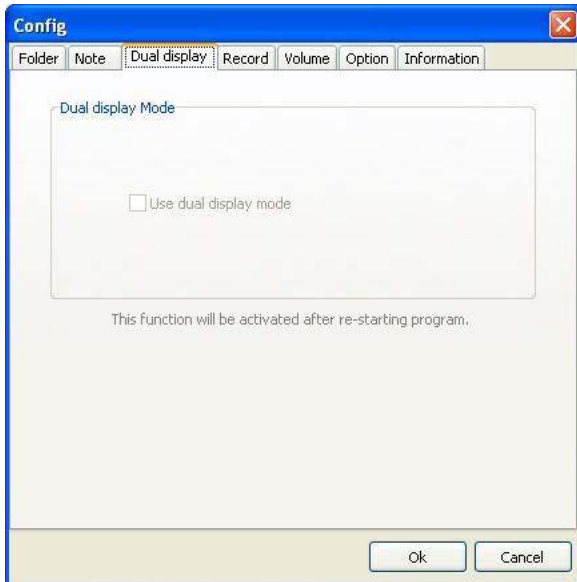
B. Note



① Background of color of new note is changed by this function. Click 'note' and change color. Default color of note is white.

C. Dual Display

① To use extended display, dual display should be selected. Dual Display mode enables you to use two wide range of writing area. To construct this mode, two display, tow U-Pointer/U-Vision is needed. Ask your U-Pointer/U-Vision dealer for more information.



D. Recording

① For accurate recording operation, you can set attributes of recording function.

Default folder for saving presentation is 'i-Pro Contents' folder under ISCom folder in root directory. To change folder, designate folder in the dialog box.

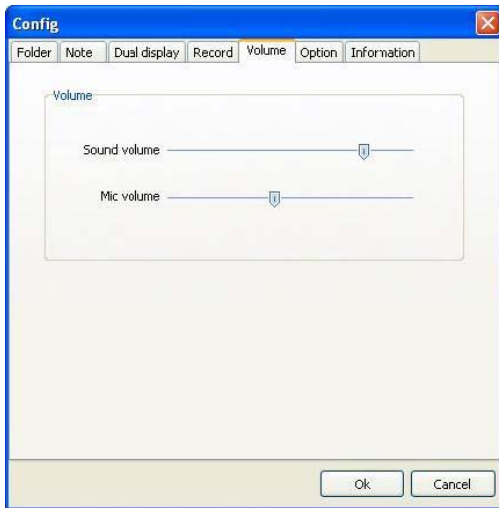
If you want to designate file name before recording, select 'Ask File Name before Recording'.

If you check 'Confirm message before recording', confirm dialog box appear before recording.



E. Volume

Mic and Speaker volume are set in this configuration. Slide volume and sound by dragging slide bar.

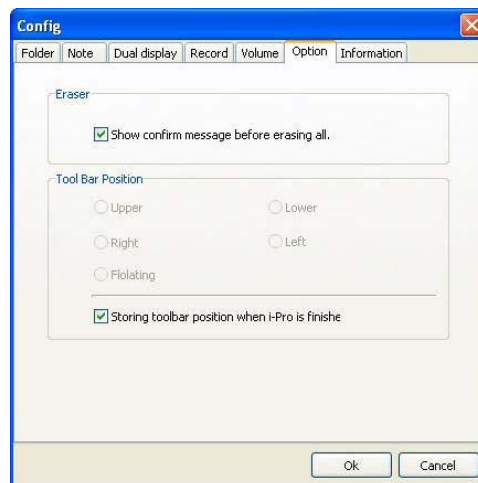


F. Option

Two options are provided in the option menu.

- ① Confirm message at 'Erase All': to prevent your mistake, confirm message box will appear when you click 'Erase All'
- ② Set Toolbar location

You can place tool bar in 5 ways. Select toolbar position according to your preference. This toolbar position is saved when you check 'Storing Toolbar position when i-Pro is finished'



G. Version Information

In the information dialog box, you can check i-Pro version information. If the version is not the last version, click 'Update' button.

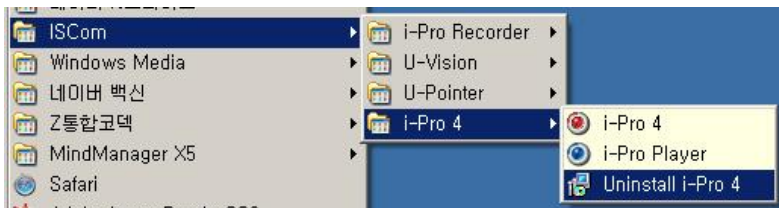


Chapter 9. Uninstall i-Pro

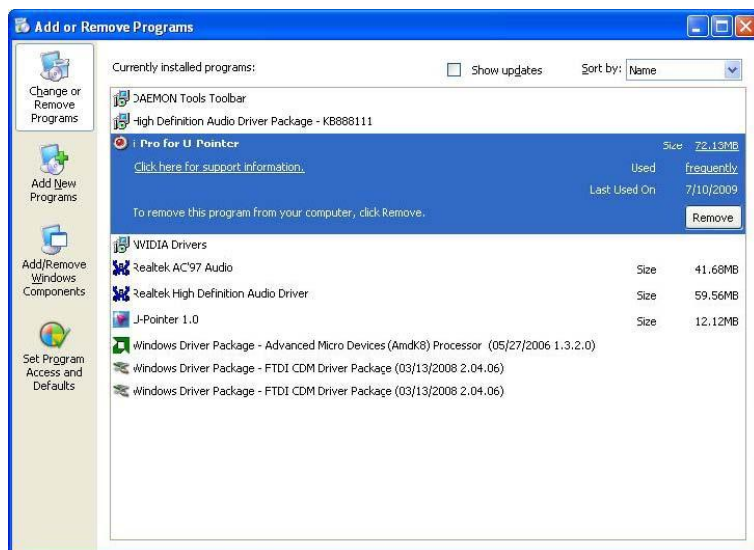
A. Uninstall i-Pro using Windows Program menu

In the programs menu of Windows, you can find ISCom folder.. Click ISCom folder and i-Pro folder consecutively, you can find 'Uninstall i-Pro' menu. Click it to uninstall i-Pro.

※ Files created by users are not deleted even though you uninstalled i-Pro. If you want to remove these, use Windows Search Browser.



B. Uninstall i-Pro using Control Panel of Windows



Run 'Program Add/delete' in the 'Program Add/delete' in Windows Control Panel.
Select i-Pro and click 'Delete'

Chapter 10. Notice

Copyright © ISCommunications Co., Ltd. All Rights Reserved.
The contents of this manual can be changed for product enhancement.

Part of or all of this manual cannot be changed or transmitted to other parties without permission of Iscommunications.

Information of i-Pro

The late information and software is provided at the ISCommunications's website: <http://www.iscom.co.kr> or <http://eng.iscom.co.kr>

TEL: +82-51-731-6601, +82-2-2688-6601

FAX: +82-51-731-6604, +82-2-2611-6604, 0303-0500-6601

FCC Compliance Statements

Note: This equipment has been tested and found to comply with the limits for a Class B digital device, pursuant to part 15 of the FCC Rules. These limits are designed to provide reasonable protection against harmful interference in a residential installation. This equipment generates, uses and can radiate radio frequency energy and, if not installed and used in accordance with the instructions, may cause harmful interference to radio communications. However, there is no guarantee that interference will not occur in a particular installation. If this equipment does cause harmful interference to radio or television reception, which can be determined by turning the equipment off and on, the user is encouraged to try to correct the interference by one or more of the following measures:

- Reorient or relocate the receiving antenna
- Increase the separation between the equipment and receiver.
- Connect the equipment into an outlet on a circuit different from that to which the receiver is connected.
- Consult the dealer or an experienced radio / TV technician for help.

Warning : Your are cautioned that any change or modifications to the equipment not expressly approved by the party responsible for compliance could void your authority to operate such equipment.