



# ira

## Wi-Fi Internet Radio Adapter

### User Guide

IR001

**Livio+Radio**

Version 2.0 Software 18606-1A5



## **Contents**

<b>About Livio Radio</b>	<b>2</b>
<b>Package Contents</b>	<b>2</b>
<b>Remote Control</b>	<b>2</b>
<b>Getting Started</b>	<b>3</b>
<b>Set The Time and date</b>	<b>5</b>
<b>Favorite Stations (FAV)</b>	<b>5</b>
<b>Media Center</b>	<b>6</b>
<b>Software Update</b>	<b>6</b>
<b>Reset to Default</b>	<b>7</b>
<b>Advanced Settings</b>	<b>7</b>
<b>Menu Map</b>	<b>8</b>
<b>IMPORTANT SAFETY INSTRUCTIONS</b>	<b>10</b>
<b>Warranty</b>	<b>11</b>

## ABOUT LIVIO RADIO

Our Philosophy is Simple: We Love Radio. Really, it's the driving force behind our work. Like our products themselves, we're a hip and laid-back bunch. No frills. No crazy features. No cumbersome junk. We do our jobs so our customers don't have to and we find ways to bring online audio to more people, in more places.

We're proud of our products and our customers love them. Don't believe it? Google us. We dare you.

## PACKAGE CONTENTS

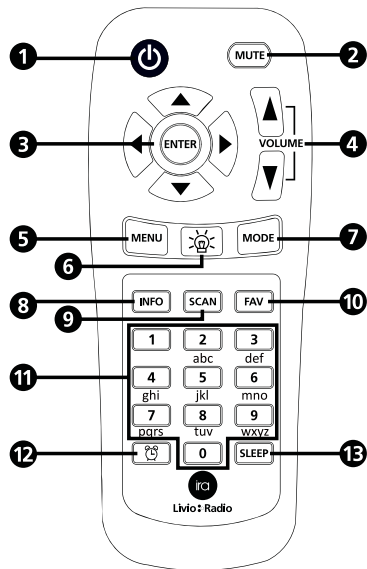
Please make sure that the following contents are included in the original package:

1. Ira Internet Radio Adapter
2. AC Power Adapter
3. RCA Cables
4. RCA to 3.5mm Adapter
5. Remote Control
6. User Manual

## REMOTE CONTROL

1. **POWER:** ON/OFF
2. **MUTE:** Because we all get phone calls now and again. Press MUTE to turn volume off completely. Press MUTE a second time to return to the previously set volume level.
3. **DIRECTIONAL PAD + ENTER:** These are your controls to navigate Ira's display
4. **VOLUME:** Adjusts the volume output
5. **MENU:** Open the main menu display for options.
6. **LIGHT SETTING:** Turns the display backlight on/off.
7. **MODE:** Switch to USB Mode to play audio from a connected USB Device or select UPnP to stream audio from a compatible computer media server (advanced users).
8. **INFO:** Displays station information.
9. **SCAN:** Scan's to a similar Internet radio station.
10. **FAV:** Favorite station list.

**To add stations to the Favorite station list:** When you hear a station you would like to save as a favorite, press and hold the FAV button.



**To show a list of your saved Favorite stations :** Press the FAV button on the remote control once.

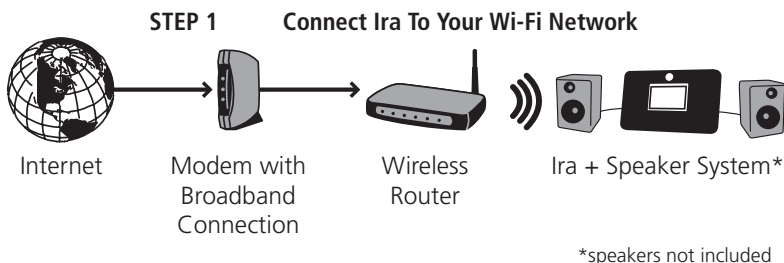
**To Delete a favorite :** Select the station you wish to delete from the list, press the right arrow on the remote, and then select "Delete."

11. **0-9 Keys:** Quickly jump to a favorite station and use to enter numbers and letters. (same keyboard as used for text messaging on your phone)

1	2 ABC	3 DEF
4 GHI	5 JKL	6 MNO
7 PQRS	8 TUV	9 WXYZ
	0	

12. **ALARM SET :** Brings up the alarm clock menu
13. **SLEEP TIMER :** Sets a sleep timer on the IRA to shut down after selected minutes.

## GETTING STARTED



Plug Ira into a wall power outlet and it will automatically turn itself on and find available Wi-Fi Internet. Ira will first ask if you would like to set up by showing "Would you like to configure Network now?"

1. You can select "Yes" to go through automatic set up.
  - If your router has a button labeled WPS you can select "Yes (WPS)." WPS will automatically set up your IRA to your router using a secure password and is the fastest way to set the IRA up to your Wi-Fi Internet at home.
  - Select "NO" to skip set up.
2. Ira will show that it is scanning for available networks and then display a list of networks.

3. Select the network you wish to connect to:
- a. If there is a key symbol next to the network you will need to enter the password for the network. Use the arrows or the number keypad to enter letters on the network.

*NOTE: Passwords are Case-Sensitive. Be sure to enter the characters accurately.*

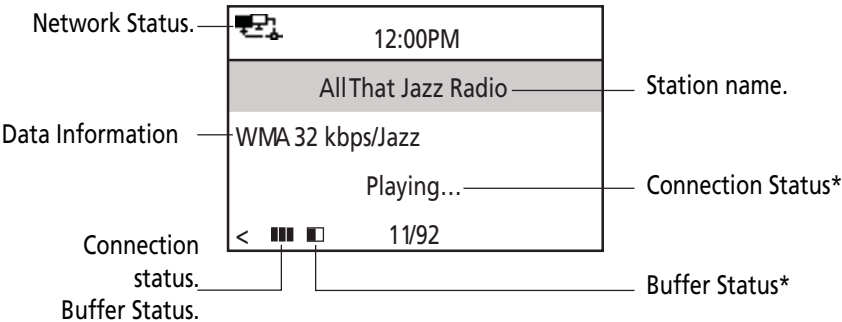
- b. Press right to move to the next character and left to delete
- c. When you are done press the "ENTER" key.

NOTE: PLEASE READ SAFETY INSTRUCTIONS AND ALL WARNINGS BEFORE USING IRA.

Your password is the same Wi-Fi password you use on a laptop or PC to connect to the Internet.

*Some Wi-Fi networks hide their names for security reasons. If you can not see your Wi-Fi network in the list, you can manually enter in the Wi-Fi information by selecting "Configuration" and then "Network" from the main menu..*

*If Ira still does not connect follow the Advanced Settings guidelines.*



## STEP 2 Connect Ira To Your Speaker System

Ira includes both an RCA cable (Red/White) and a RCA adapter. You can plug Ira into any aux input on a boombox, home stereo, or television. These inputs are usually marked with an "IN" or "INPUT", and may also be colored red and white.

*We recommend setting the volume level to 10 on Ira before turning on your speaker system.*



Uses 1/8" (3.5 mm) or RCA plug to connect to your speaker system.

**STEP 3      Enjoy The Music You Love**

Ira comes pre-loaded with thousands of free Internet radio stations.

To listen to music, simply press "Menu" on the remote, then select "Internet radio" and "Browse Stations" to find a station or a podcast.

**SET THE TIME AND DATE**

To set the time and date, select: MENU > Date & Time > "Set Date and Time"

**FAVORITE STATIONS (FAV)**

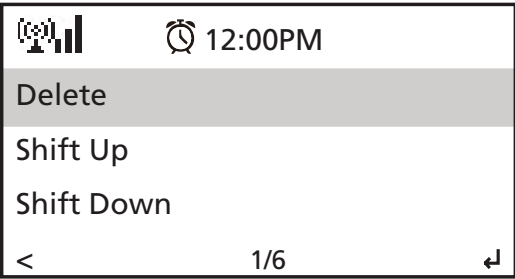
When you hear a station you would like to save as a favorite, press and hold the "FAV" button.

	The station is being added to My Favorites.
	The station has already been in My Favorites.
	Favorite exceeds the maximum of 250 entries.

To show a list of your saved Favorite (FAV) stations press the FAV button on the remote control one time.

	12:00PM
Add to My Favorite	
Auto Scan	
Play	
<	2/4

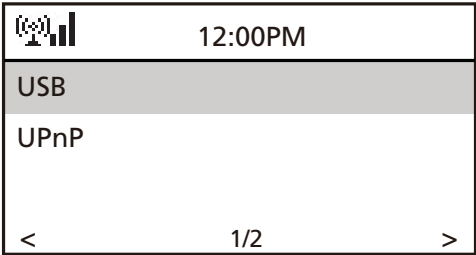
To delete a station from the Favorite (FAV) list, highlight the station and press and hold the FAV button.



A maximum of 40 stations can be saved in the Favorite (FAV) list.

MEDIA CENTER

Within the Media Center you can play music from a USB drive or through a media server on a computer within your home.



- 1. **USB** – Connect any USB stick or hard drive to the back of the IRA. Select USB from the Media Center menu and the connected drive name will appear once the USB storage drive is connected.
  - a. Highlight the drive name and press the right navigation button to access the drive. Select the music you wish to play, then press either the right navigation button or the enter button to play.
  - b. IRA supports the following music formats: MP3, WMA and FLAC (up to 320Kbps) via USB.
- 2. **UPnP (Advanced users only):** This function lets you playback music from the computer through UPnP (sometimes known as DLNA) servers. The computer with the UPnP server must be on the same network as the IRA.  
To connect:
  - a. Highlight one media server then press the right navigation button to start accessing UPnP audio playback.
  - b. IRA through UPnP supports MP3 and WMA (up to 320kbps).

*Note: music sorting method depends on which media server you use*

SOFTWARE UPDATE

From time to time we may update the software to add new features.

Software updates are available at [www.livioradio.com/help](http://www.livioradio.com/help)

If there is a new software available, download it from the Livio web site. Once the firmware is downloaded to your computer, move the firmware file to an empty USB stick. The only file on the USB stick should be the "flash bin" file downloaded from the Livio web site. If there are any other files on the USB stick the IRA will not perform an upgrade.

To update the firmware version: 1. GO to Configuration > Software Update and select the item you are allowed to download. 2. Select 'Yes' to begin downloading it. Wait for a few seconds until the device reboots. NOTE: Do not turn off the device while the update is proceeding.

## RESET TO DEFAULT

The Configuration > Reset to Default option allows you to reset the device to its factory defaults. Your favorite lists will be erased. You may want to reset to default if your network settings have changed or if you want to erase all stored items on the IRA and return it to the default factory settings (the way the IRA is set up out of the box.)

## ADVANCED SETTINGS

If you are having trouble with the automatic set up, this section has all of the questions you will need to ask the person or service that set up your wireless connection. The person may require your MAC address.

To find Ira's MAC address, use your remote:

MENU > Information Center > System Information

Then highlight Wireless MAC Address. The MAC Address will scroll across the screen.

### Write Down The MAC Address As Displayed:

\_ \_ : \_ \_ : \_ \_ : \_ \_ : \_ \_ : \_ \_

*MAC addresses use only numbers 0-9 and only letters A, B, C, D, E, and F.*

IF YOU ARE HAVING TROUBLE WITH THE AUTOMATIC SETUP, YOU MAY NEED THE FOLLOWING INFORMATION ABOUT YOUR HOME WIRELESS INTERNET CONNECTION.

#### Auto DHCP?

YES ☐

NO ☐

*If NO what IP address does the Livio need:*

---

**Network Mask (or Subnet)**      *e.g. 255.255.255.0*

---

**Router Gateway Address**      *e.g. 192.168.1.1*

---



**DNS Server 1 Address**

e.g. 192.168.1.1

---

**Do you need a DNS#2 address?** YES ☐ NO ☐  
*If YES enter DNS#2 Address:*

---

**SSID (aka Network Name):**

---

**Note:** SSID is CASE SENSITIVE, and must use correct combination of upper or lower case letters.

**Network Password**


---

**Note** Firewall Information: Check that the following ports are open: UDP and TCP ports 80 and 123; DNS port 53.

Once you have this information you are ready to enter the settings by going to:

MENU > Configuration > Network > Manual Configuration

**MENU MAP**

Main Menu

Internet Radio

Browse Preset

My Favorite

Browse Stations

Local Radio

Music

Talk

Sports

By Location

By Language

Live TV (Audio)

Podcasts

Settings

Search Stations

Enter Custom Station

History

Media Center

USB

UPnP

Information Center

Weather Information

Financial Information



## System Information

- Version Number
- Wireless MAC Address
- Wireless IP Address

## Configuration

### Network

- Wireless Network Configuration
- Wireless Network (WPS PBC)
- Manual Configuration
- Check Network when Power ON

### Date&Time

### Alarm

### Language

### Dimmer

### Sleep Timer

### Buffer

### Weather



- Show on Standby
- Temperature Unit
- Set Location

### Login Radiotime

### Software Update

### Reset to Default

CAUTION: TO PREVENT FIRE OR SHOCK HAZARD, DO NOT USE THIS PLUG WITH AN EXTENSION CORD, RECEPTACLE OR OTHER OUTLET UNLESS THE BLADES CAN BE FULLY INSERTED TO PREVENT BLADE EXPOSURE. TO PREVENT FIRE OR SHOCK HAZARD, DO NOT EXPOSE THIS APPLIANCE TO RAIN OR MOISTURE.

 <p>The lightning flash with arrowhead symbol, within an equilateral triangle is intended to alert the user to the presence of insulated 'dangerous voltage' within the product's enclosure that may be of sufficient magnitude to constitute a risk of electric shock to persons.</p>	<div style="border: 1px solid black; padding: 5px; text-align: center;"> <b>CAUTION</b>        RISK OF ELECTRIC SHOCK        DO NOT OPEN     </div> <p><b>WARNING:</b> To reduce the risk of electric shock, do not remove cover (or back). No user serviceable parts are inside. Refer servicing to qualified personnel.</p>	 <p>The exclamation point within an equilateral triangle is intended to alert the user to the presence of important operating and maintenance (servicing) instructions in the literature accompanying the appliance.</p>
--	---	--

## IMPORTANT SAFETY INSTRUCTIONS

- 1.) Read these instructions.
- 2.) Keep these instructions.
- 3.) Read all warnings.
- 4.) Follow all instructions.
- 5.) Do not use this apparatus near water.
- 6.) Clean only with dry cloth.
- 7.) Do not block any ventilation openings. Install in accordance with the manufacturer's instructions.
- 8.) Do not install near any heat sources such as radiators, heat registers, stoves, or other apparatus (including amplifiers) that produce heat.
- 9.) Protect the power cord from being walked on or pinched particularly at plugs, convenience receptacles, and the point where they exit the apparatus.
- 10.) Only use attachments/accessories specified by the manufacturer.
- 11.) Unplug this apparatus during lightning storms or when unused for long periods of time.
- 12.) Refer all servicing to qualified service personnel. Servicing is required when the apparatus has been damaged in any way, such as power-supply cord or plug is damaged, liquid has been spilled or objects have fallen into the apparatus, the apparatus has been exposed to rain or moisture, does not operate normally, or has been dropped.
- 13.) This appliance should not be exposed to dripping or splashing water and no object filled with liquids such as vases shall be placed near the apparatus.
- 14.) Do not overload wall outlet. Use only power source as indicated.
- 15.) Use replacement parts as specified by the manufacturer.
- 16.) Please do not use as a flotation device.
- 17.) No open flame sources, such as lighted candles, should be placed on or near the device.



- 18.) Place in a stable location so it will not fall, which could cause product damage or bodily harm.
- 19.) Refer all servicing to qualified service personnel. Servicing is required when the device has been damaged in any way, such as power-supply cord or plug is damaged, liquid has been spilled or objects have fallen into the device, the device has been exposed to rain or moisture, does not operate normally, or has been dropped.

## WARRANTY

Livio Radio Limited Consumer Warranty - United States of America

Livio Radio warrants all Radio Products sold by Livio Radio (each "Product") to be free of defects in material and workmanship, subject to the following conditions:

The duration of Livio Radio's warranty with respect to each Product is limited to one (1) year from the date of sale to the original consumer purchaser. No other express warranties are made with respect to any Product.

All implied warranties, including warranties of merchantability and fitness for a particular product are limited to the warranty period set forth above. This warranty is not transferable and applies only to the original consumer purchaser of the Product. Livio Radio will, as its sole obligation under this warranty, replace or repair, at its option, any Product that does not conform to this warranty.

Products may be repaired or replaced with new or refurbished items. This limited warranty does not cover defects in appearance, cosmetic or decorative items, including any non-operative parts. Under no circumstances will Livio Radio be liable for any incidental or consequential damages under this warranty or any implied warranties. These remedies are the customer's exclusive remedies for breach of warranty. This limited warranty only extends to customers who purchase the Products in the United States.

Livio Radio will not be responsible for damage resulting from any:

1. Deviation from Livio Radio's operating instructions as printed in Livio Radio's catalog or on any packaging, labels or other literature provided with a Product
2. Installation of a Product in a manner which is inconsistent with Livio Radio's written instructions
3. Alteration or modification of a Product
4. Misuse
5. Neglect
6. Abuse
7. Accident
8. Normal wear and tear
9. Commercial use
10. Improper storage
11. Environmental conditions, including excessive temperature or humidity
12. Service by any entity other than a Livio Radio authorized repair facility
13. Use of the Product in conjunction with any non-Livio Radio branded accessory
14. Other improper application, installation or operation of this Product, or

15. Defects or malfunctions of which Livio Radio is not advised within ten (10) days of the expiration of the limited warranty period.

## How You Can Get Service

To obtain warranty service during the first thirty (30) days after the date of purchase, you must return the defective Product with the original receipt to the original place of purchase. To obtain warranty service during the first thirty (30) days for Products purchased specifically from [www.livioradio.com](http://www.livioradio.com) you must contact the E-Store directly at the number provided on your invoice. For all Products for the remainder of the limited warranty period, you must contact Livio Radio by phone at the customer service number listed at [www.livioradio.com](http://www.livioradio.com). If further clarification or additional information is required from Livio Radio, you may call Livio Radio at our customer service number listed at [www.livioradio.com](http://www.livioradio.com). If warranty service is needed at any time during the warranty period, the purchaser will be required to furnish a sales receipt/proof of purchase indicating the date of purchase, amount paid and place of purchase. Customers who fail to provide such proof of purchase will have the Product returned to them or will be charged for the repair/replacement of any Product. The customer is responsible for shipping the Product to an authorized Livio Radio Warranty Facility.

## How State Law Relates to the Warranty

Some states do not allow limitations on the duration of implied warranties, or the exclusion or the limitation of incidental or consequential damages. Thus, the above limitations or exclusions may not apply to you. This warranty gives you specific legal rights. You may also have other rights that may vary from state to state. NO PERSON IS AUTHORIZED BY LIVIO RADIO TO MODIFY OR ADD TO THIS LIMITED WARRANTY.

“FCC Compliance and Advisory Statement: This device complies with Part 15 of the FCC Rules. Operation is subject to the following two conditions: 1) this device may not cause harmful interference, and 2) this device must accept any interference received, including interference that may cause undesired operation.”

## Canada Warranty

Livio Radio warrants all Radio Products sold by Livio Radio (each “Product”) to be free of defects in material and workmanship, subject to the following conditions:

The duration of Livio Radio’s warranty with respect to each Product is limited to one (1) year from the date of sale to the original consumer purchaser. No other express warranties are made with respect to any Product.

All implied warranties, including warranties of merchantability and fitness for a particular product are limited to the warranty period set forth above. This warranty is not transferable and applies only to the original consumer purchaser of the Product. Livio Radio will, as its sole obligation under this warranty, replace or repair, at its option, any Product that does not conform to this warranty.

This limited warranty does not cover defects in appearance, cosmetic or decorative items, including any non-operative parts. Under no circumstances will Livio Radio be liable for any loss of revenue, loss of profits or failure to realize expected savings (collectively, “Economic Loss”) under this warranty or any implied conditions or warranties. These remedies are the customer’s exclusive remedies for breach of conditions or warranty. This limited warranty only extends to customers who purchase the Products in Canada.

Livio Radio will not be responsible for damage resulting from any:

1. Deviation from Livio Radio’s operating instructions as printed in Livio Radio’s catalog or on any packaging, labels or other literature provided with a Product

2. Installation of a Product in a manner which is inconsistent with Livio Radio's written instructions
3. Alteration or modification of a Product
4. Misuse
5. Neglect
6. Abuse
7. Accident
8. Normal wear and tear
9. Commercial use
10. Improper storage
11. Environmental conditions, including excessive temperature or humidity
12. Service by any entity other than a livio radio authorized repair facility
13. Use of the product in conjunction with any non-livio radio branded accessory
14. Other improper application, installation or operation of this product, or
15. Defects or malfunctions of which Livio Radio is not advised within ten (10) days of the expiration of the limited warranty period.

## How You Can Get Service

To obtain warranty service during the first thirty (30) days after the date of purchase, you must return the defective Product with the original receipt to the original place of purchase.

To obtain warranty service during the first thirty (30) days for Products purchased specifically from [www.livioradio.com](http://www.livioradio.com) you must contact the E-Store directly at the number provided on your invoice. For all Products for the remainder of the limited warranty period, you must contact Livio Radio by phone at the customer service number listed at [www.livioradio.com](http://www.livioradio.com). If further clarification or additional information is required from Livio Radio, you may call Livio Radio at our customer service number listed at [www.livioradio.com](http://www.livioradio.com). If warranty service is needed at any time during the warranty period, the purchaser will be required to furnish a sales receipt/proof of purchase indicating the date of purchase, amount paid and place of purchase. Customers who fail to provide such proof of purchase will have the Product returned to them or will be charged for the repair/replacement of any Product. The customer is responsible for shipping the Product to an authorized Livio Radio Warranty Facility.

How Provincial Law Relates to the Warranty: Some provinces do not allow limitations on the duration of implied conditions or warranties, or the exclusion or the limitation of Economic Loss. Thus, the above limitations or exclusions may not apply to you. This warranty gives you specific legal rights. You may also have other rights that may vary from province to province.

**NO PERSON IS AUTHORIZED BY LIVIO RADIO TO MODIFY OR ADD TO THIS LIMITED WARRANTY**

This device complies with part 15 of the FCC rules.

Operation is subject to the following two conditions:

1. This device may not cause harmful interference, and
2. This device must accept any interference received, including interference that may cause undesired operation.

This Class B apparatus complies with Canadian ICES-003.

Cet appareil numérique de la classe B est conforme à la NMB-003 du Canada.

## IMPORTANT SAFETY INSTRUCTIONS

1. Read these instructions.
2. Keep these instructions.
3. Heed all warnings.
4. Follow all instructions.
5. Do not use this apparatus near water.
6. Clean only with dry cloth.
7. Do not block any ventilation openings. Install in accordance with the manufacturer's instructions.
8. Do not install near any heat sources such as radiators, heat registers, stoves, or other apparatus (including amplifiers) that produce heat.
9. Protect the power cord from being walked on or pinched particularly at plugs, convenience receptacles, and the point where they exit from the apparatus.
10. Only use attachments / accessories specified by the manufacturer.
11. Unplug this apparatus during lightning storms or when unused for long periods of time.
12. Refer all servicing to qualified service personnel. Servicing is required when the apparatus has been damaged in any way, such as power-supply cord or plug is damaged, liquid has been spilled or objects have fallen into the apparatus, the apparatus has been exposed to rain or moisture, does not operate normally, or has been dropped.
13. This appliance shall not be exposed to dripping or splashing water and no object filled with liquids such as vases shall be placed on the apparatus.
14. Do not overload wall outlet. Use only power source as indicated.
15. Use replacement parts as specified by the manufacturer.

## **FCC Statement**

This equipment has been tested and found to comply with the limits for a Class B digital device, pursuant to part 15 of the FCC rules. These limits are designed to provide reasonable protection against harmful interference in a residential installation. This equipment generates, uses and can radiate radio frequency energy and, if not installed and used in accordance with the instructions, may cause harmful interference to radio communications. However, there is no guarantee that interference will not occur in a particular installation. If this equipment does cause harmful interference to radio or television reception, which can be determined by turning the equipment off and on, the user is encouraged to try to correct the interference by one or more of the following measures:

- Reorient or relocate the receiving antenna.
- Increase the separation between the equipment and receiver.
- Connect the equipment into an outlet on a circuit different from that to which the receiver is connected.
- Consult the dealer or an experienced radio/TV technician for help.

To assure continued compliance, any changes or modifications not expressly approved by the party responsible for compliance could void the user's authority to operate this equipment. (Example- use only shielded interface cables when connecting to computer or peripheral devices).

## **FCC Radiation Exposure Statement**

This equipment complies with FCC RF radiation exposure limits set forth for an uncontrolled environment. This transmitter must not be co-located or operating in conjunction with any other antenna or transmitter. This equipment should be installed and operated with a minimum distance of 20 centimeters between the radiator and your body.

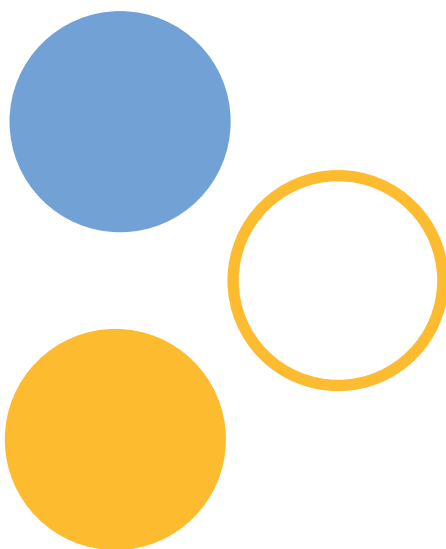
This equipment complies with Part 15 of the FCC Rules. Operation is subject to the following two conditions:

- (1) This device may not cause harmful interference, and
- (2) This device must accept any interference received, including interference that may cause undesired operation.

## **Caution!**

The manufacturer is not responsible for any radio or TV interference caused by unauthorized modifications to this equipment. Such modifications could void the user authority to operate the equipment.





Need help?  
[www.LivioRadio.com/help](http://www.LivioRadio.com/help)