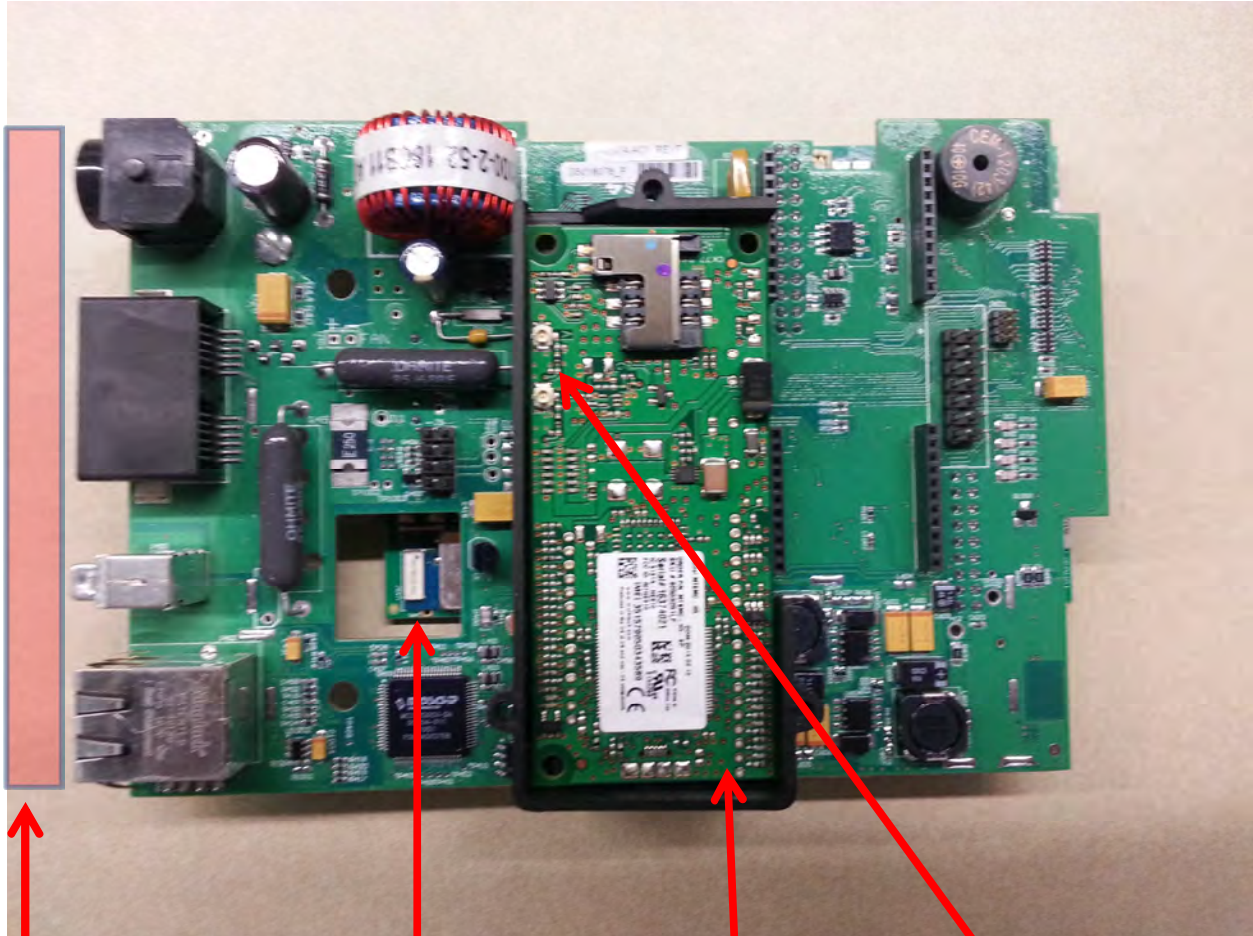


## Internal Photos of Host Device

### PCBs – Top view



Bluetooth Module on bottom PCB (under top PCB). Antenna included on module.

Cellular Module on top PCB (above bottom PCB).

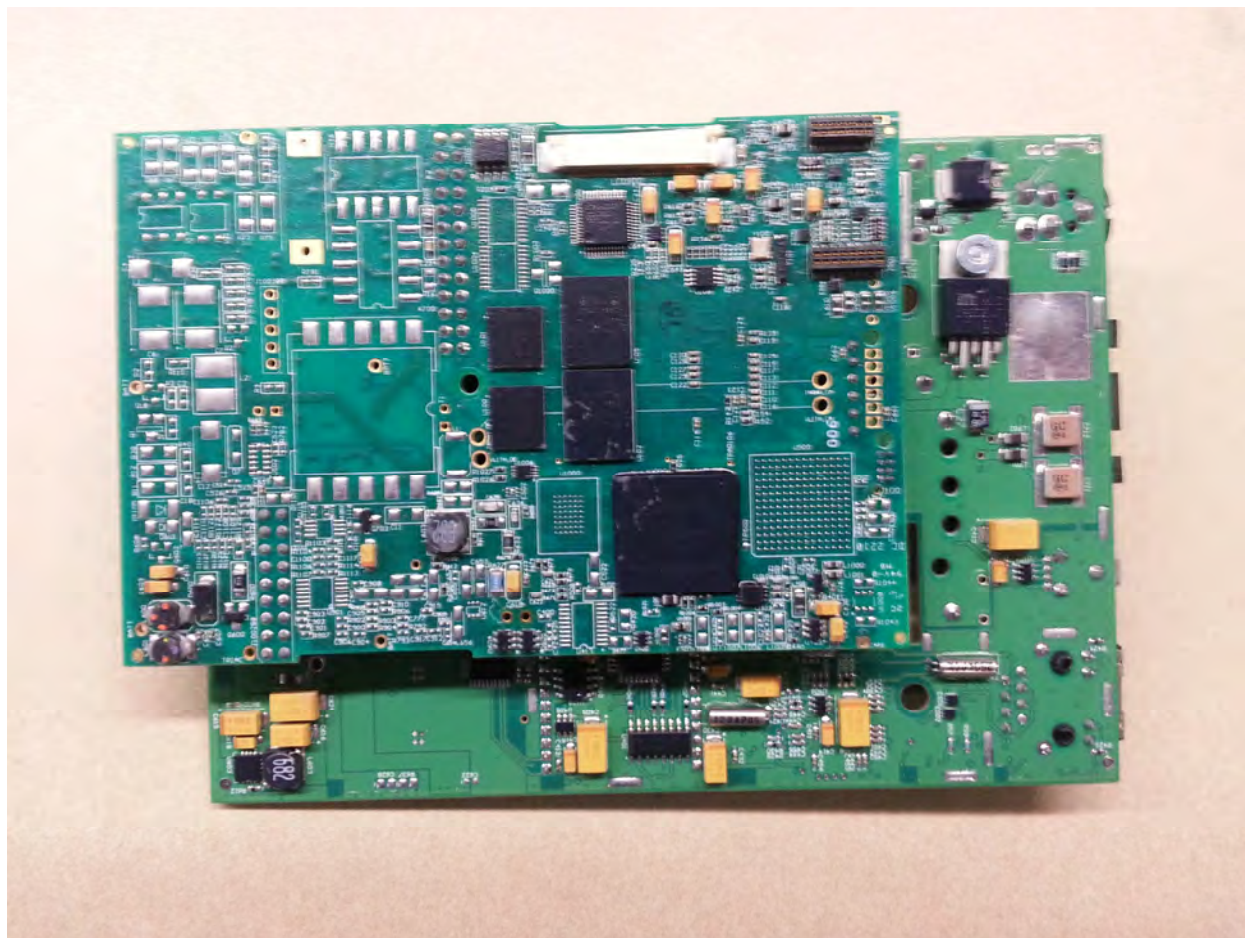
Cellular Module antenna connection

Back of host device where Cellular Module antenna is mounted to plastic housing.

## Internal Photos of Host Device

---

PCBs – Bottom view



## Internal Photos of Host Device

---

Zoomed – Bluetooth Module with antenna





## Internal Photos of Host Device

---

### Zoomed – Cellular Module

