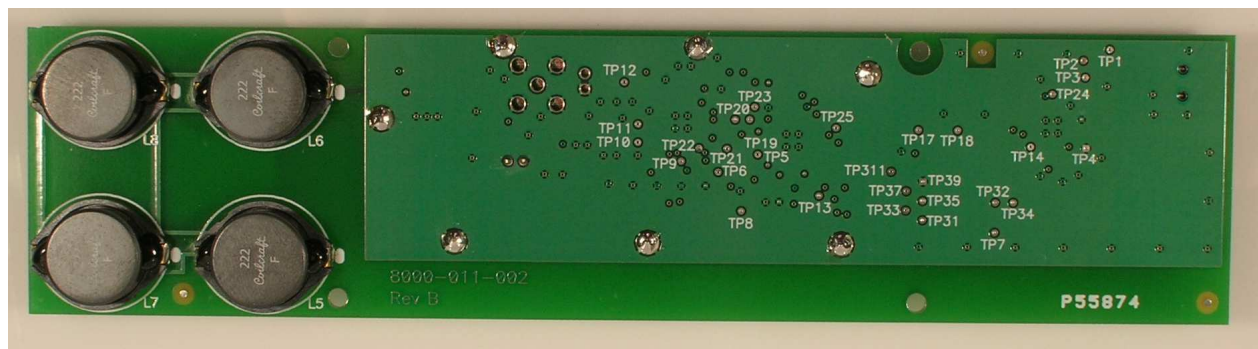




MODEL 8000-011-002 External Reader/Writer RFID Board	OEM Operating/Installation Instructions
--	---



Features:

- ISO 15693, 18000-3, Tag-it™ HF-I Compatible
- Read up to 4 Tags Simultaneously
- 13.56MHz Reader/Writer
- Integrated antenna with up to 3 inch read range
- USB 2.0 powered
- Windows XP™, Linux™ compatible
- Dimensions: 1.5" x 5.75 "

1.0 Product Introduction

The Sargent and Greenleaf external RFID reader/writer (part number 8000-011-002) is a multi tag RFID reader/writer that can be easily integrated into any security/tracking system.

2.0 Product Installation Requirements

- 1 available USB port for every board
- Silicon labs USB to UART driver

3.0 Product Installation

Simply plug the external reader/writer into an available USB 2.0 port on a PC or laptop. The 2 red LEDs (D1 and D2) will flash on and off during the startup routine.

Once this process is completed the board will go into a standalone operating mode for manufacturing diagnostics. Please reference table 1.1 to determine the state of reed switch and the RFID antenna.

Red LED D1	Red LED D2
Blinking – System is in start up	Blinking – System is in startup
Flashing – RFID tag is present	On – Board has power
Off – RFID tag is not present	Off – No power

4.0 Application Development

To integrate this RFID reader/writer into a new or existing system please contact your sales representative from Sargent and Greenleaf for pricing of the development kit which will include an interface control document.

5.0 Notes to the Customer

NOTE: Changes or modifications not expressly approved by the manufacture could void the user's authority to operate the equipment.

NOTE: This device complies with part 15 of the FCC Rules. Operation is subject to the following two conditions: (1) This device may not cause harmful interference, and (2) this device must accept any interference received, including interference that may cause undesired operation.

NOTE: This equipment has been tested and found to comply with the limits for a Class B digital device, pursuant to Part 15 of the FCC Rules. These limits are designed to provide reasonable protection against harmful interference in a residential installation. This equipment generates, uses and can radiate radio frequency energy and, if not installed and used in accordance with the instructions, may cause harmful interference to radio communications.