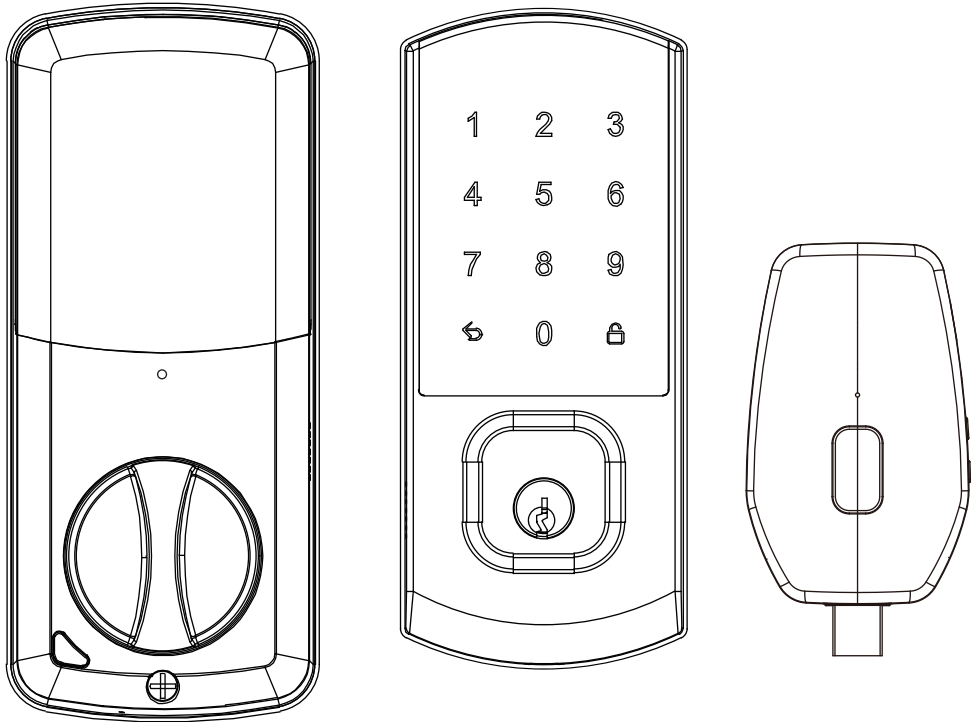


Delaney Smart Deadbolt

Model: W3U-Nexus &W3U-Nexus-B

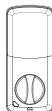
Version 1.0



PLEASE READ THESE INSTRUCTIONS CAREFULLY BEFORE USING THIS PRODUCT
AND KEEP THIS MANUAL FOR FUTURE REFERENCE.



Exterior Lock



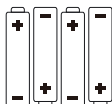
Interior Lock



Smart Bridge



Door Sensor



AA Alkaline Battery *4



Excluded

#2 Phillips Head Screwdriver

Screw Pack



S3: M5*30mm* 3
For 50mm door thickness



S4: M5*40mm* 3
For 60mm door thickness



Physical Key



S5:
Screw for Smart Lock *1
(M4 *14mm)



S6:
Screw for Smart Lock *1
(M4 *12mm)



Reset Pin

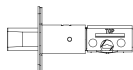
Deadbolt Pack



Strike Plate Set



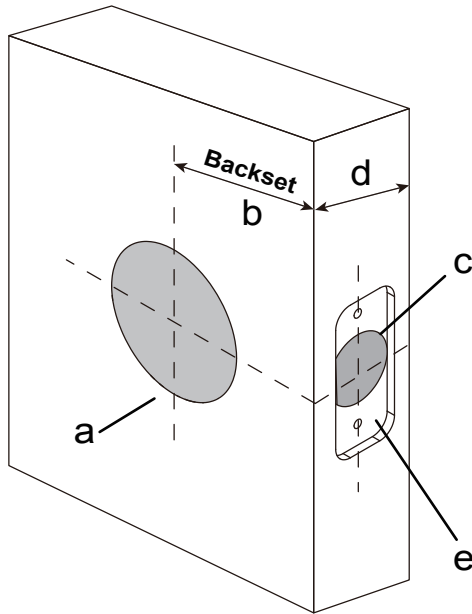
S2 Strike Screws * 2



Deadbolt *1

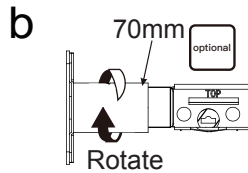
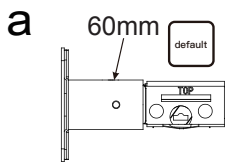


S1 Latch Screws * 2



1. PREPARE DOOR AND CHECK DIMENSIONS

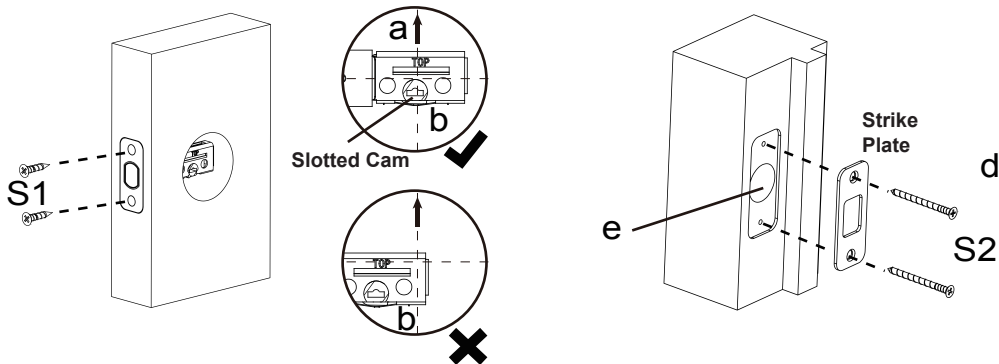
- a. Make sure that the main hole diameter in the door face is 2-1/8"(54mm).
- b. The backset is the distance from the door edge to the center of the 2-1/8" main hole. It should be either 2-3/8"(60mm) or 2-3/4" (70mm)
- c. Make sure that the hole diameter in the door edge for the latch is 1" (25mm)
- d. Make sure that the door thickness is between 1-3/8"(35mm) and 2-3/6" (60mm)
- e. Make sure the door edge has a cutout large enough for the latch faceplate



2. PREPARE THE DEADBOLT LATCH

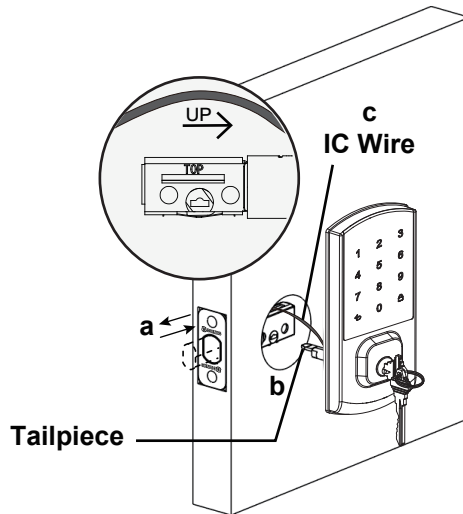
a. The Deadbolt Latch is already set for a 2-3/8"(60mm) backset but can be adjusted to a 2-3/4" (70mm) backset if needed.

b. To adjust the 2-3/4" (70mm) backset, hold the tail of the latch and rotate the front of the latch 180 degrees.



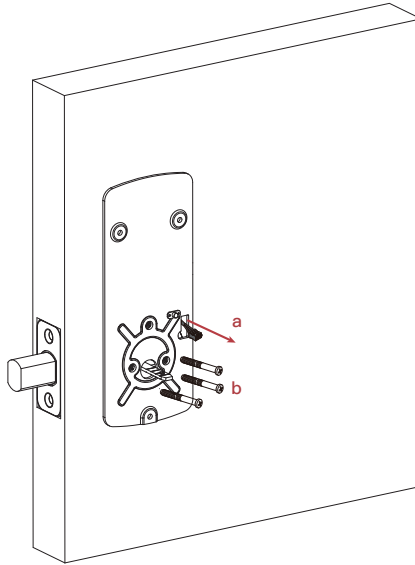
3. INSTALL THE LATCH AND STRIKE PLATE

- With the bolt retracted, insert the Deadbolt Latch into the 1"(25mm) hole in the door edge with the word "TOP" in the upper position and the slotted cam at the bottom.
- Make sure the slotted cam is centered in the 2-1/8"(54mm)-main hole. If not, see Step 1b and measure the backset of your door again and adjust the latch.
- Insert two (S1) Latch Screws in the faceplate holes and tighten using a #2 Phillips Head screwdriver.
- Select the Strike Plate that best matches the cutout on the door jamb. Insert two (S2) Strike Screws in the holes of the Strike and tighten firmly using a #2 Phillips Head screwdriver.
- Make sure that the hole in the jamb is at least 1-1/8(29mm) deep to allow full bolt extension.



4. INSTALL THE EXTERIOR ASSEMBLY

- a. Make sure that the latch bolt is retracted (unlocked)
- b. Orient the Tailpiece in a horizontal position.
- c. Pass the IC Wire over the latch and insert the Tail piece into the slotted cam of the latch.
- d. Hold the Exterior Assembly against the door and make sure it is straight.
- e. Insert the key and rotate to make sure the latch bolt extends and retracts smoothly

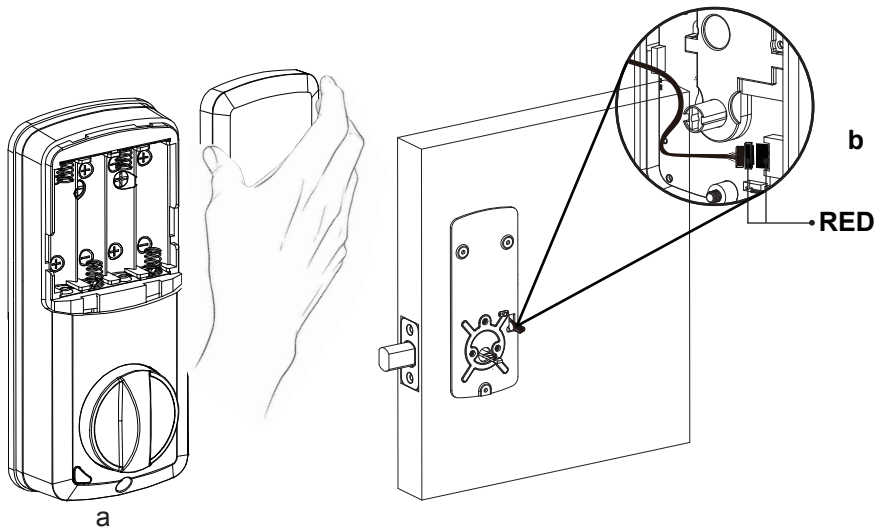


5.INSTALL THE MOUNTING PLATE

- a. Pass the IC Wire through the WIRE HOLE opening as shown.
- b. Place the plate against the door and make sure it is straight.
- c. Insert the upper Mounting Plate Screw first and partially tighten with a #2 Phillips Head screwdriver, so that the mounting plate position can still be adjusted.

Note: Select the S3 mounting plate screw if the door thickness is less than 1-9/7"(50mm), while select S4 mounting plate screw if the door thickness is between 1-9/7" (50mm) and 2-3/6"(60mm)

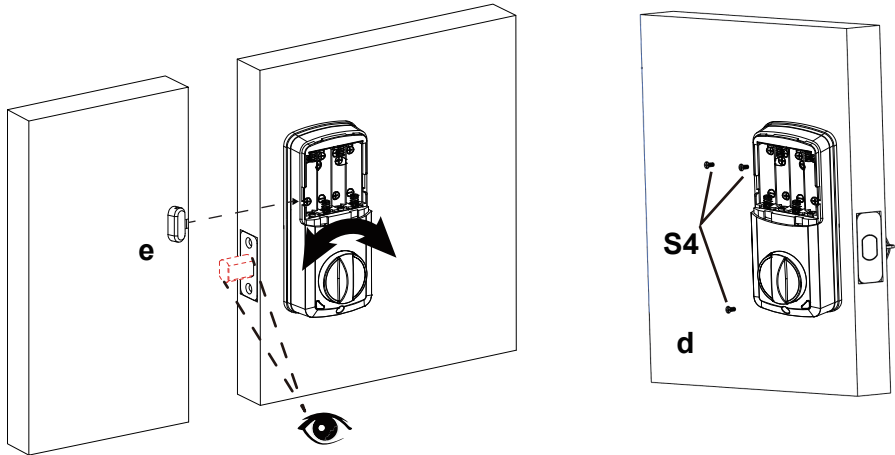
- d. Then insert the bottom two mounting plate screws. Firmly tighten all three screws using a #2 Phillips Head screwdriver
- e. Once again, insert the key in the Exterior Assembly and test to make sure the latch extends and retracts smoothly



6.CONNECT THE IC WIRE

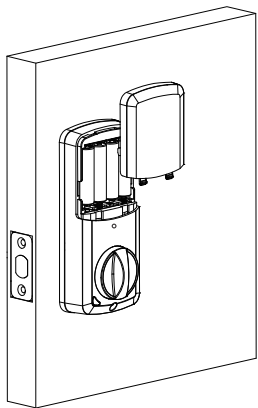
a. Remove the battery cover from the Interior Assembly by holding the two sides to push it up and pull it out.

b. Connect the IC Wire connector to the PCB connector by aligning them as shown and inserting firmly. The IC Wire connector is color coded red to indicate the correct side to face out.



7.INSTALL THE INTERIOR ASSEMBLY

- a. Place the Interior Assembly against the Mounting Plate and door face, making sure not to pinch the IC Wire.
- b. The Turnpiece should be oriented vertically. Make sure the tailpiece slides into the horizontal slot of the Turnpiece.
- c. Check deadbolt operation by rotating the Turnpiece towards the latch to extend the bolt. Rotate it back to retract the bolt, which should move freely.
- d. After checking proper mechanical operation, attach the Interior Assembly to the Mounting Plate with three S4 Interior Assembly Screws using a #2 Phillips Head screwdriver.
- e. Install the door sensor to the door edge, closed to the arrow mark within 1-5/7" (40mm)



DO NOT MIX OLD AND NEW BATTERIES

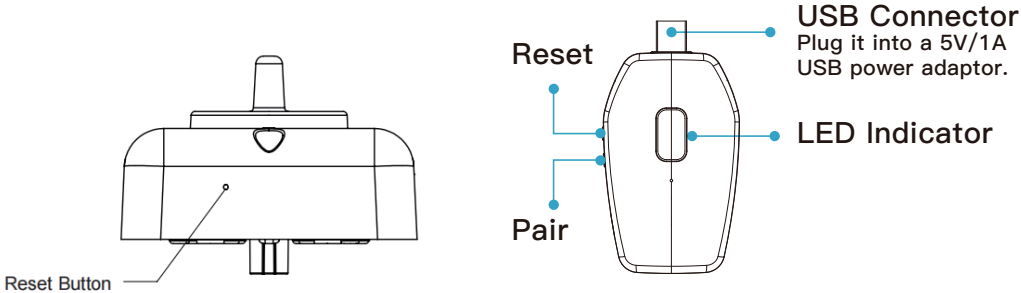
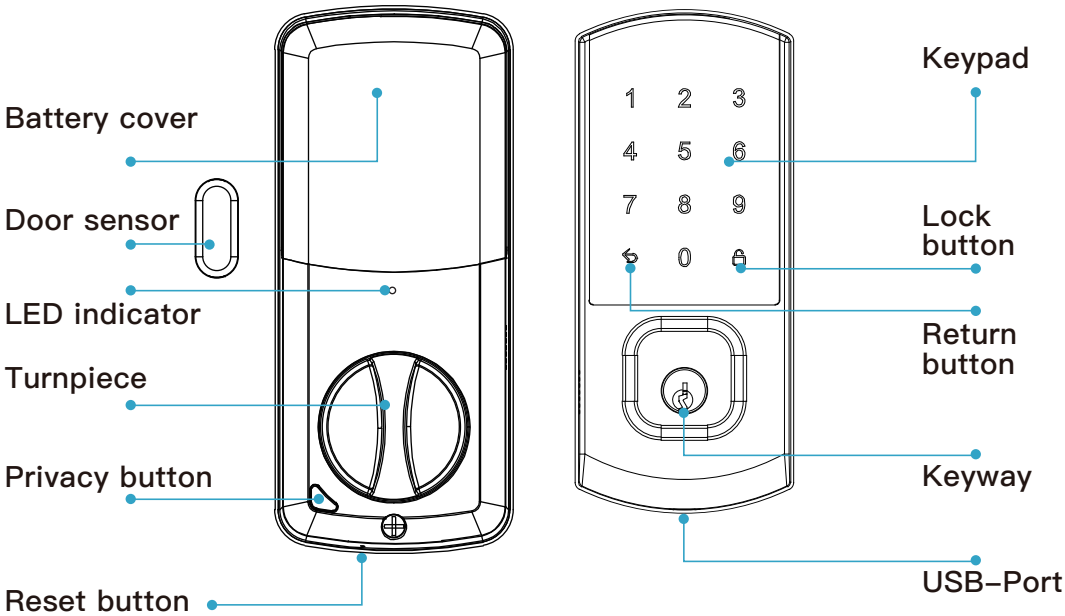
8.INSERT THE BATTERIES

- a. Make sure that the latch bolt is retracted (unlocked)
- b. Insert 4 new AA alkaline batteries according to the diagram in the battery compartment. When replacing batteries, remove all old batteries before inserting new batteries.

Lock overview

Interior Assembly

Exterior Assembly



System Alerts			
Lock Activity	Buzzer	Interior LED	Keypad
Power-on	beep*1		Lights up White
Button Press	beep*1		White Flashes 1 time
Low Battery		Lights up RED	Return Button lights up RED
Critical Low Battery	beep*3	Lights up RED	Return Button lights up RED
Enable Privacy Mode			1/5/9/3/7 Button Flashes White
Successfully Lock	Long beep*1	Lights up GREEN	
Successfully Unlock		Lights up GREEN	1/2/3/4/6/7/8/9 Button Flashes White
Unsuccessfully Unlock		Lights up GREEN	1/5/9/3/7 Button Flashes White
Bluetooth/Wi-Fi Connection	beep*2	Lights up GREEN until APP disconnection	
Wrong Passwords	Long beep*1		1/5/9/3/7 Button Flashes White
Keypad Shutdown	beep*2		1/5/9/3/7 Button Flashes White
Enable Bluetooth	beep*1		
Disable Bluetooth	beep*2		
Factory Reset	Long beep		All Buttons Flash White
Door Open	beep for 15 seconds	Flashes RED for 15 seconds	Lock button Flashes RED for 15 seconds
Deadbolt Jammed	beep for 15 seconds	Flashes ORANGE for 15 seconds	
Deadbolt Tampered	beep for 3 mins		All Buttons Flash White and Red for 5 seconds

Bridge LED Indicator	
Power on	Red LED Flashes
Factory Reset	Red LED Flashes
Pairing	Blue LED Flashes
Wi-Fi Connection	Blue LED Light up
Wi-Fi Disconnection	Red LED light up

Definitions

Factory Reset(Lock)

This procedure will delete all User Codes associated with the lock.

1. Keep the door open and unlocked.
2. Insert the Reset pin into the hole in bottom of the unit and press the Reset Button for 5 seconds until your hear a long beep

Definitions

Factory Reset(Bridge)

Press and hold the reset button on the bridge for 8 seconds until the red LED flashes

Wrong Entry

After 5 consecutive unsuccessful attempts to open the deadbolt, the deadbolt will emit one long beep, the 13579 button will flash white and the keypad will shutdown for 3 minutes

Critical Low Battery

If keypad stops lighting up after unlocking one time, then battery power is at a critically low level and motorized locking will stop working to prevent accidental lock-outs. Please change batteries immediately. When replacing batteries, remove all old batteries before inserting new batteries

Tamper Alert

In the event the exterior lock is being pried or tampered with, the lock will emit beeps for 3 minutes and keypad flashes white and red for 5 seconds.

Emergency Power

In case battery power is completely lost, please charge it by the USB bank power in the TYPE-C port below the keypad.

Hidden Password

A total of 26 hidden digits including actual PIN code can be entered to prevent the actual PIN code from being exposed. For example: the actual PIN code is 232323. You can unlock the door by entering the phantom code as: ****232323****, *means any codes

Auto Lock

Auto Lock feature will automatically extend the dead-bolt after it has been unlocked

One-Touch Locking

To easily lock the deadbolt, press the return button.

APP Guide

Please download the "Keyfree Manager Plus" App from Google play and App store.



Android



ios

Create new account

- ① Click the Register
- ② Input the email address and click next
- ③ Click the verification and find the code in your email box
- ④ Create account passwords and click save icon

Carrier 9:22 AM 100%

Log in

Log in

Account
Please enter e-mail

Password
Please enter at least 8 letters or numbers

Auto Login

Login

Register Forgot Password ?

☒ Agreed Privacy Policy and User Agreement

Carrier 9:22 AM 100%

< Register

Create KFM Account

Email address
google@gmail.com

Next

Carrier 9:22 AM 100%

< Register

Create KFM Account

Email address
google@gmail.com

Enter Verification Code
QWERTY Verification

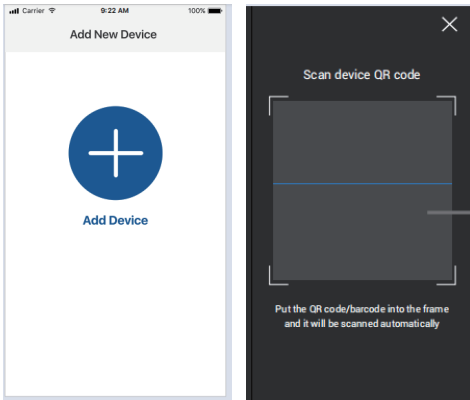
Account Password
1234567

Verify Password
Please enter at least 8 letters or numbers

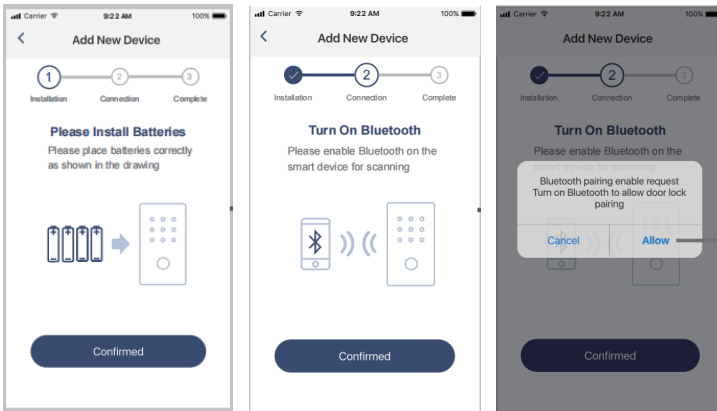
Save

Add Lock

- ① Click the add device icon and scan the QR code in battery door

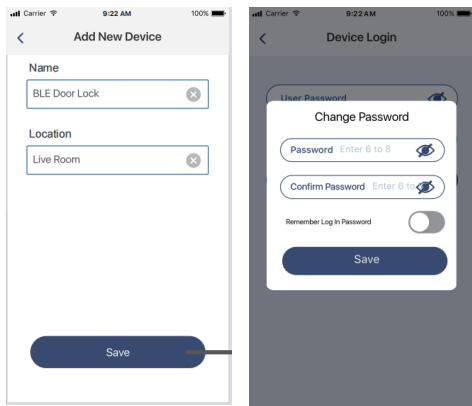


- ② Follow the Wizard to complete the doorlock pairing

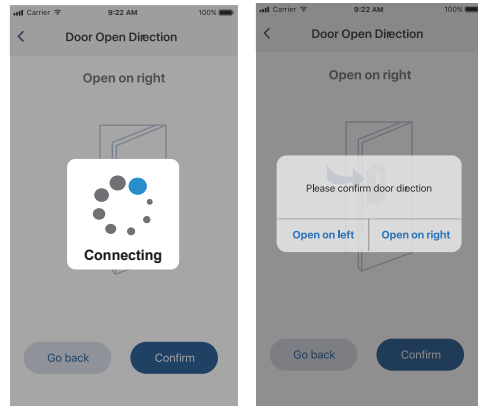


Add Lock

③ Name the lock and setup passwords



④ Door open Direction Setup

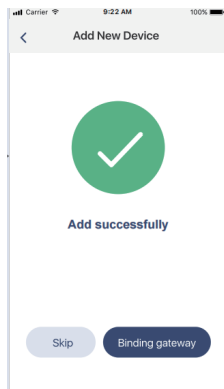


④ Door open Direction Setup



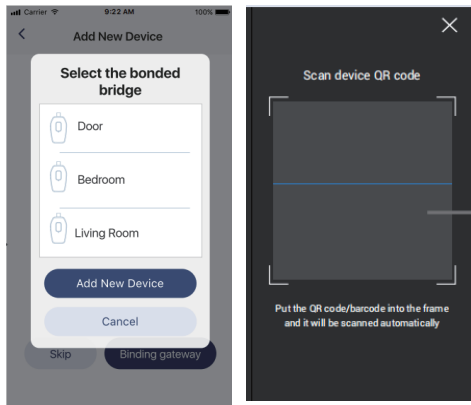
⑤ Doorlock pairing successfully

⑥ Click the Binding gateway if you own a gateway. If not, please skip this step.

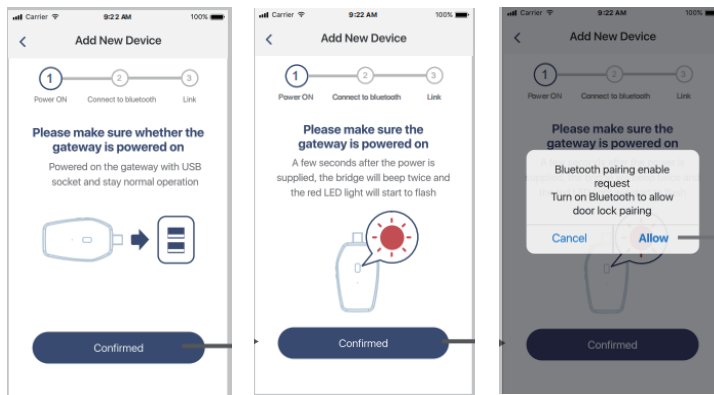


Binding Bridge

- ① Click the add device icon and scan the QR code in gateway



- ② Follow the Wizard to complete the gateway pairing



Binding Bridge

③ Name the device

9:23 AM 100%

Add New Device

Name
JGWMHED1-XXXX

Location
Live Room

Save

④ Select your appropriate Wi-Fi setting

9:22 AM 100%

Add New Device

Search Wi-Fi list...

9:22 AM 100%

Wi-Fi Selection

360 VMFi-JSW-1
360 VMFi-JSW-2
360 VMFi-JSW-3
360 VMFi-JSW-4

Cancel Search Again

9:22 AM 100%

Wi-Fi Config

WIFI SSID 360 VMFi-JSW-1

WIFI Password 65432

Pairing confirmation

9:22 AM 100%

Wi-Fi Config

1 2 3 4 5 6 7 8 9 0
- / : ; () * & @ #
+ = , < > ? ! ' " ~
ABC [Globe] [Globe] space return

⑤ Gateway pairing successfully

9:22 AM 100%

Add New Device

Add successfully

Skip Binding doorlock

Home Page

Return to Device List

Advanced setting

Wi-Fi connection

Bluetooth connection

Door open status

Door closed status

Return to Device List

Unlock status

Lock status

Battery status

Account information

Event list

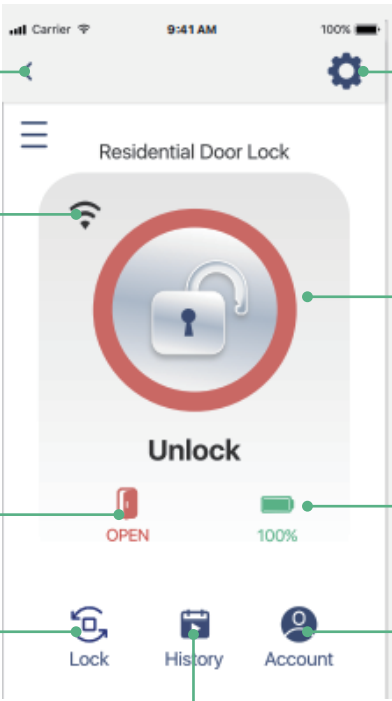
Low battery status

Device offline

Device online

Door open status

Door closed status



Advance setting

Keep Unlocked	Allows a door remains unlocked for a specific period or under certain conditions. When it is activated, the door will not automatically lock, providing continuous access without the need to re-enter codes or use a key.
System Setting	Setup device name, location and time format.
Admin Setting	Identify the Admin information and setup admin passwords *Emergency password allows a user to set up one password that can be used in emergency situations. It would create emergency event in history or push an emergency message to admin if you input emergency. The message pushing should be actives with gateway binding.
Add User	Allows admin to add new users to the system
User List	Identify the users in the list and establish a specific schedule for each of them
Gateway	Setup the Gateway information
About	Identify the Firmware and APP version

This device complies with Part 15 of the FCC rules. Operation is subjected to the following two conditions: (1) this device may not cause harmful interference, and (2) this device must accept any interference received, including interference that may cause undesired operation.

Changes or modifications not expressly approved by the party responsible for compliance could void your authority to operate

the equipment.

This equipment complies with FCC radiation exposure limits set forth for an uncontrolled environment.

The distance between user and products should be no less than 20cm.

This equipment has been tested and found to comply with the limits for a Class B digital device, pursuant to Part 15 of the

FCC Rules. These limits are designed to provide reasonable protection against harmful interference in a residential installation. This equipment generates, uses and can radiate radio frequency energy and, if not installed and used in accordance with the instructions, may cause harmful interference to radio communications. However, there is no guarantee that interference will not occur in a particular installation. If this equipment does cause harmful interference

to radio or television reception, which can be determined by turning the equipment off and on, the user is encouraged to try

to correct the interference by one or more of the following measures:

- Reorient or relocate the receiving antenna.
- Increase the separation between the equipment and receiver.
- Connect the equipment into an outlet on a circuit different

from that to which the receiver is connected.

- Consult the dealer or an experienced radio/TV technician for help