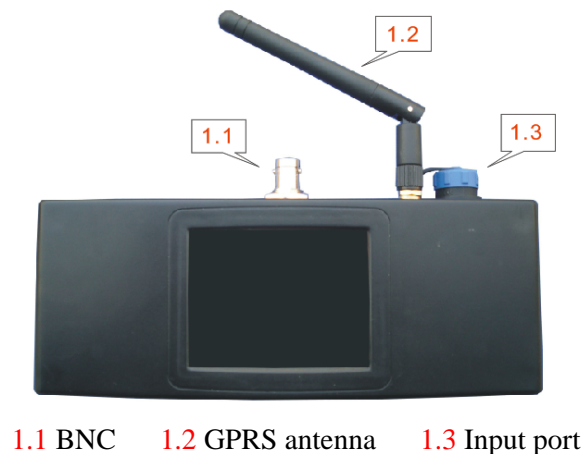


Specification

Description :



WMC is a kind of product enjoys GPRS wireless communication, can external connect GPS global positioning system and provide boardcast information for display equipment. The boardcast information consist of word、 picture and animation, play carrier is 2.8 inch LCD; boardcast information received by GPRS antenna or saved by Memory card; the external connect GPS global positioning system adopt BNC interface input.

There are corresponding card slot for SIM card and Memory card in WMC. Once insert SIM card, the product can receive and send message; Once insert the Memory card, product can display the message stored in Memory card without receiving display message.

WMC is basically equipped with LED display on automobile, and provide boardcast information to LED display. When this equipment is connected to the Internet, words, graphic or animation files played by this equipment can be remotely viewed and monitored by the control center using the proprietary software. When this equipment is connected to the external LED panel, these files can be viewed and monitored from the external LED panel.

Notice: The equipment is sold to CPM, LLC as part of a LED display system under contract. This equipment is for private use only. Not for public sale.

Function :

- ✧ GPRS wireless communication
- ✧ Can external connect GPS global positioning system
- ✧ Can external connect to the display equipment to synchronized display.

✧ Boardcast information consist of word、 picture、 animation

Technic parameter :

- Input voltage: DC12V
- Input Power: 3.1W
- Voltage fit bound: DC9.6~15V
- Band: EDGE/GSM/GPRS 850/900/1800/1900MHz
- EMS memory: 128MB ROM+64MB RAM
- Memory card: 2GB Micro SD
- LCD: 2.8'QVGA Touch panel
- Display media: AVI/SWF/ JPG/BMP
- GPS: SIRF III
- Product dimension: 180(L)x70(W)x38.8(H)mm
- Weight: 0.3Kg

	Manufacturer	Model/part No.	Gain
GPRS antenna	Rong Hua Electronic Co.,Ltd	TLB-2400-B	1dB
GPS antenna	Guan Zhou Shi Gao Ke Zhong Shi Telecommunication Technology Co.,Ltd	GPS	28dB

User specification :

Once connect WMC input port to DC12V power supply,product will start-up,play software and display information automatically.System can finish automatically without any setting by consumer.

A SIM card that can connect with GPRS wireless Internet should be inserted, then product can receive message from GPRS and display. The playing software can run and display automatically after product start-up, and playing message is picked up from Memory card where message is inputted and saved before hand.

Notice: This version of the WMC runs automatically and does not support touch panel operation. Product have no the End-User reconciliation process,and have been adjusted well before sale. It is operated by proprietary software remotely by the end user via cellular service.



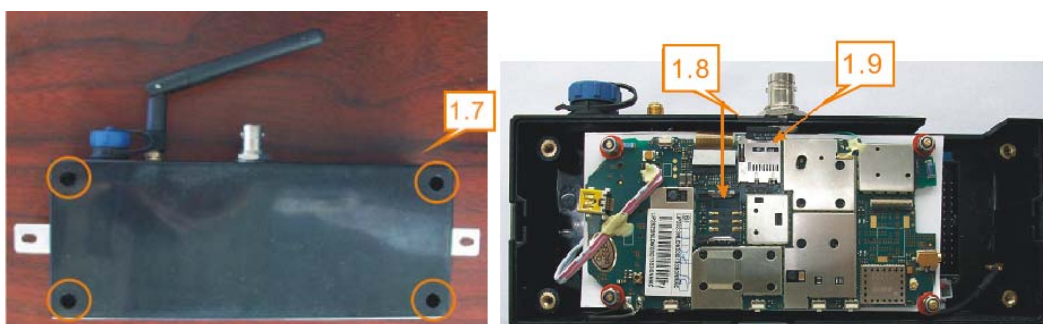
1.4 Panel mounted female connector 1.5 Panel mounted male connector

- **Power source:** Please make sure the electronic line connector is suit to panel mounted male connector when you switch on the power source of DC12V, there are screw thread on the male connector and female connector, screw down the blue cover of connector of the female connector after plugging with right direction, which to prevent plugs break off.



1.6 GPS antenna

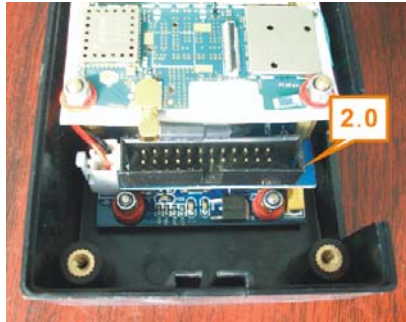
- **Enter GPS:** Please make sure the interface is suit to the BNC of the product before enter GPS antenna.



1.7 screw hole 1.8 SIM card slot 1.9 Memory card slot

- **Fix SIM card and Memory card:** First, screw out the four bolts at the back of product. Then, insert the SIM card into the SIM card slot with its gold contacts facing down (the cutoff corner of the SIM card should match the cut-off corner in the device). Also the Memory card, insert the Memory card into the Memory card

slot with its gold contacts facing down; If you want to pick out the Memory card, press the Memory card, it will be out automatically.



2.0 Display signal output port

- **Exterior connect LED display:** when the product connect LED display, the product have special display signal output port; the display content be transmitted to LED display to synchronized display.







2.1 Bracket

- **Installation:** There are two brackets in the right and left for installation, you can use a screw to fix it. (The equipment is installed by the end user) It can be mounted on the metal rib or metal frame across an automobile underneath the roof or using Velcro or strong cable tie on the rib securing the equipment in a mobile application. Or it can be mounted under the hood, inside the glove compartment, on the floor, or inside the trunk of an automobile in a mobile application. Or mounted inside a LED sign on metal frame in a stationary application, such as a LED sign on a post or on a wall. The end user plans to drill two holes to mount the equipment on the metal frame or the metal rib across the automobile in the space between the roof and the plastic ceiling in the mobile application.

Notice: Because product installed in LED display crust, customer just can see the display content showed by LED display, but not the display showed by product; but the content showed by both of them are consistent and synchronized.

Warning:

-  Input voltage must be in the scope of DC9.6~15V.
-  The GPRS antenna can not be installed at the area with signal screen.
-  The product is not waterproof,do not put it out-of –doors.
-  FCC Radiation Exposure Statement The antennas used for this transmitter must be installed to provide a separation distance of at least 20 cm from all persons and must not be collocated or operating in conjunction with any other antenna or transmitter.