

Quick Manual

Model : INT-910H

V1.1E



- Contents -

Copyright and greement.....	3
Size and Features.....	3
Caution when using N-GEN.....	4
1. N-GEN product components.....	5
2. N-GEN Introduction.....	5
©Usinguser' s manua	5
©Soft Reset.....	5
©Hard Reset.....	6
© How to use stylus pen.....	6
© LED Alarm.....	7
© Battery attaching/detaching.....	7
© Charging.....	7
© Option of N-GEN.....	8
3. Connecting N-GEN to desktop PC.....	9
4. Start.....	9
5. Microsoft Windows CE 5.0 general.....	11
Main Window.....	11
TaskBar.....	13
6. Setting High Speed Internet.....	22
Internet connecting through desktop PC.....	26
7. How to optimize battery longevity.....	27
8. Using Demo Program of N-GEN. (Option).....	28
[RFID Demo Program]····	28
9. Q&A.....	31
Check up list before requesting A/S.....	33
[Appendix] glossary.....	34
Word frequently used in PDA.....	34

Copyright and Agreement

- The user' s manual is prepared by most current product technology. It may contain editing error or omitting due to a difficulty expression of technical feature.
- If an application program provided by other supplier using by **N-GEN**, refer to the supplier for a program manual.
- The application program providers have the responsibility of indicating their contact number for customer service on **N-GEN** terminal, item box, or program.
- INT information System Corporation do not warranty any programs produced and added by the third software companies after **N-GEN** products are distributed from our factories.
- INT information System Corporation has the right to ask warranty of any programs to the program providers to meet the needs of mobile networking companies.
- The contents in the user' s manual are protected under the Software Copyright Act. Copy, reproduction, distribution of the contents in the user' s manual without any written agreement notice of INT information System Co. Ltd., is considered as criminal actions, and may be sentenced up to 3years of imprisonment and \$50,000 fine by Software Copyright Act.
- Windows, MS Office, Outlook, ActiveSync, Internet Explorer programs are the registered brand of Microsoft.
- **N-GEN** is the registered brand of INT information System Co. Ltd.The brands of other products and service referred in this manual belong to corresponding providers.

NOTE: This equipment has been tested and found to comply with the limits for a Class B digital device, pursuant to part 15 of the FCC Rules. These limits are designed to provide reasonable protection against harmful interference in a residential installation. This equipment generates, uses and can radiate radio frequency energy and, if not installed and used in accordance with the instructions, may cause harmful interference to radio communications. However, there is no guarantee that interference will not occur in a particular installation. If this equipment does cause harmful interference to radio or television reception, which can be determined by turning the equipment off and on, the user is encouraged to try to correct the interference by one or more of the following measures:

- Reorient or relocate the receiving antenna.
- Increase the separation between the equipment and receiver.
- Connect the equipment into an outlet on a circuit different from that to which the receiver is connected.
- Consult the dealer or an experienced radio/TV technician for help.

Size and Features

Frequency Range	FHSS 902~928 MHz
Frequency Detail	Untill ± 300 MHz of allocated frequency
Dimensions	87.8 x 70 x 218mm
Weight	600g
RF Power	1.0 Watt (+30dBm)
Operation Power	7.4Vdc
Operation Temperature	-20 ~ +50°C

Caution when using N-GEN

Be aware of user caution before using the product for user' s safety and finance protection.

User Caution

- (1) When the unit is lost or stolen, notify to communication networking company management immediately.
- (2) Do not rent the unit without authorized permission.
- (3) Do not use the unit while driving.
- (4) For technical help, contact designated service centers.
- (5) Contact responding suppliers directly for questions on applications and work programs other than hardware and basic installed software programs.
- (6) Use proper and supplied batteries, chargers and accessories by INT information System Co. Ltd. Any defect on a unit while using other batteries, chargers and accessories cannot get warranty.
- (7) When uses this device you keep it over 20Cm from your body.

Carrying and Storage Caution

- (1) Avoid high temperature and humidity. It may cause fatality to the device.
- (2) Avoid intentional dropping from high elevation. It may cause fatality to the device.
- (3) Charge batteries fully before the first time use of the device.

Do not reconstruct

Do not reconstruct N-GEN for any purpose. It may cause fire of the unit, and wound or electric shock to users.

For reconstructed units, warranty will be expired immediately.

1. N-GEN product components

Immediately after opening the item box check the basic components in unit listed as following.

- 1 unit of N-GEN main body, 1 standard battery
- USB cradle
- Portable Adapter
- User' s manual (quick manual)
- Stylus pens (1 unit with main body)

2. N-GEN Introduction

◎ Using user's manual

The user' s manual provides useful information for users to understand well how to use N-GEN.

The contents related to phone and communication is applied to the device embedded with GSM/GPRS module for voice and data communication.

◎ Soft Reset

For unexpected error occurred while using software, click reset button.

Initial screen will be popped up and shows windows CE 5.0 logo with [start Up] sign on upper part of screen. Last stage, main screen will be settled. In case pre-setting of password, password enter screen will be popped up right before main screen.

In soft reset mode, application will be shut down, and unsaved data will be lost. However saved data and file will be safe.



[SOFT RESET SCREEN]

◎ Hard Reset

For fatal problem with a device, and application problem beyond the soft reset solution, press reset button for 4 seconds, then screen becomes dimmed and power will go off

After that, press reset button smoothly, then it will go to hard reset mode reloading OS from flash memory.

4–5 seconds later window CE 5.0 logo and process bar will be popped up. After all image loading main screen will be settled.

User shall caution that all data will be set as default value except data in flash disk folder



[HARD RESET SCREEN]

Caution	<ol style="list-style-type: none">1. When soft reset, press reset button longer than one second may trigger hard reset.2. When hard reset, every created data, data file and programs personal managing data downloaded from PC will be lost. To avoid such cases, use external storage device or internal flash disk having regular back up of important data
----------------	---

◎ How to use stylus pen

TAP

To Select items or executing. Click touch screen one time

Double Click

Similar function as mouse double click function of computer, click screen twice

Drag & Drop

Similar function as mouse drag function of computer, with pressing screen, drag item to move to other position.

Tap and Hold

Similar function as mouse right click button of computer mouse, after tapping, leave Stylus pen touching the screen. This function is frequently used for file copy, delete, and paste or with when keyboard is using.

◎ LED Alarm

Type	LED status	Details	
CDMA status LED	Blue Blinking	CDMA standby (within range of phone and internet) CDMA	
		Blue on	CDMA communication processing (in use of voice, internet)
		Blue off	CDMA is off or out of range
Scanner LED	Green	When Barcode is read successfully	

◎ Battery attaching/detaching



Battery attaching

As picture shown, put the battery pack to back of PDA, and lock the battery pack with locking device

Battery detaching

Press locking device to the right, then using upper notch, detach the battery from main body.

◎ Charging

Connect plug-in from charger to charge jack of main body, or charge jack of cradle, and then place main body onto cradle.

Charging LED

Type	LED Status	Details
Charging in Cradle LED	Red	In Charging
Direct charging to main battery	Green	Fully Charging

Caution	<p>Do not use any other charger except one (9V / 2.5A) provided. Plug to the wall facing “ DC 9V sticker” upside. When cradle charging, check if tightly the plugged as shown on left picture. Make sure to handle it gentle; damage with excessive force may cause no warranty.</p> <p>Incongruent change of battery can cause the explosion.</p> <p>When attached battery is completely discharged, plug charger to main body, then reset the device to check if screen is back on. To use, do at least 10 minute charging.</p>
---------	---

* When charging, the status of the battery attached to main body can be confirmed by the LED left of upper corner of main body. Also the status of Sub-battery can be confirmed by the LED right of low corner of Cradle

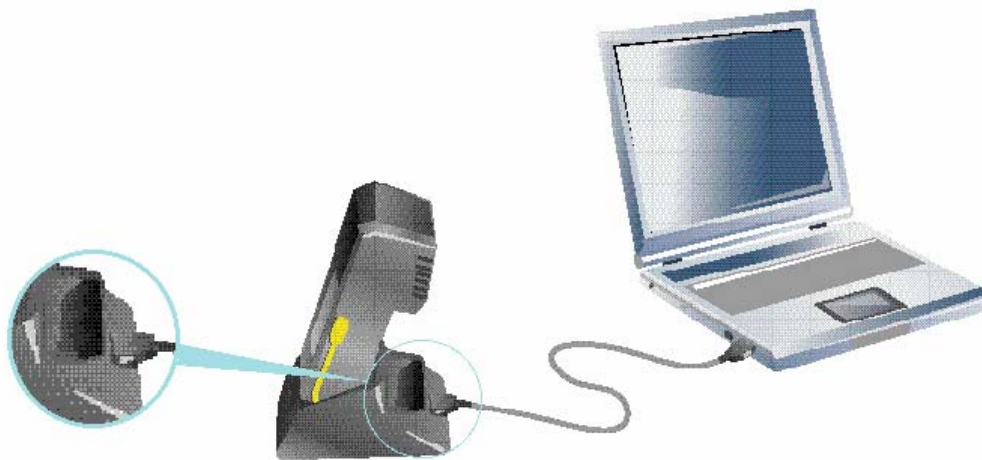
© Option of N-Gen

Option List.	Type	Details
Barcode Scanner	2D Laser Type	Opticon 38400bps serial

3. Connecting N-GEN to desktop PC

A USB cradle of N-GEN supports charging and USB connection. Connecting step of USB cradle of N-GEN is as following.

1. Connect charger to USB cradle.
2. Connect charger to power source (to wall)
3. Connect USB cable of USB cradle to USB port of desktop PC
4. Place N-GEN onto docking cradle then execute Synchronization with Desktop PC



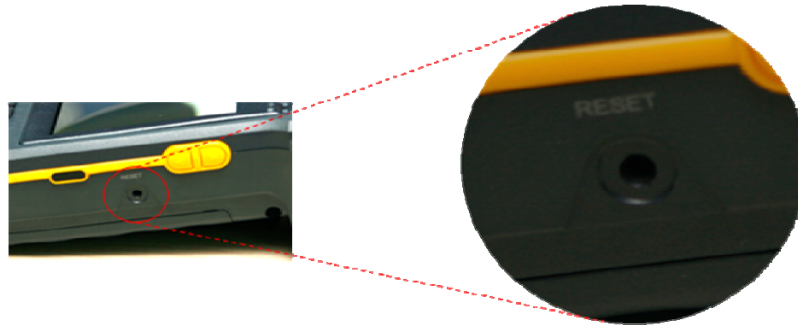
4. Start

This section explains to start N-GEN when first time use

Follow the below step

1. Attach the battery to N-GEN.
2. Connect the battery charger.
3. Click reset button (soft reset)..

Before N-GEN is executing in first time, make sure to charge the battery fully. Light clicking of reset button by stylus pen will initiate N-GEN to connect battery power source. After 4-5 seconds later, N-GEN goes to hard rest mode that will load images from flash Rom to SDRAM. Window logo and process bar will be popped up confirming loading status. If main screen is fully loaded, N-GEN is ready to use.

**Warning**

If the battery is completely discharged, all data and file may get lost. To prevent it, power of the main body to save mode. If low battery warning sign is popped up, please recharge the battery before further use.

4. After connecting charger to N-GEN, LED will be light on located upper left of PDA. To check if battery is fully charged, wait until LED becomes green. Charging will takes 3 hours from beginning to fully charge. N-GEN may be used while being charged however it will cause more time to fully charged.
5. Setting Stylus pen: once N-GEN executing, the screen setting wizard will be popped up (also will be popped up doing hard reset). The screen setting wizard will arrange the touch screen. With stylus pen, continue to press (+) sign. Then (+) sign will move to other location, continue to press (+) sign moving to that location. After all process are done, N-GEN will show main screen where user can start to work.
6. Connecting to N-GEN to desktop PC: for Synchronization of files and data between N-GEN and desktop PC, connect USB connector to USB port of desktop PC, then place N-GEN to cradle. After that, execute ActiveSync to desktop PC.
7. Power off
If long period of time, device is not going to be used, please shut off power completely pressing reset button longer than 4 second. This process is also identical as hard reset so make sure to back up important data with backup memory.

5. Microsoft Windows CE 5.0 general

This section deals with general overview of Microsoft Window CE 5.0.

The outline will be

- Using Main window

- Using taskbar

- Using Settings

Main Window

When power is on, Window CE 5.0 (similar to Window XP) will be loading. Main window shows desktop and taskbar.



On desktop screen, shortcuts of main application are popped up.
Next will be details of shortcuts.



My Computer: Shows N-GEN internal structure such as folders and files.



Recycle Bin: file and data can be completely deleted and recovered. Deleted folder from window explore and desktop will be stored here.



Caution

When empty Recycle Bin, no file or data can be recovered after that.



Internet explore: search web or intranet With Internet Explore, Internet or intranet is available. N-GEN uses Microsoft pocket Internet explore 6.0.



Media player: replay audio and video files Media player supports ASF, WMA, MP3, and WAV format of files. More details are available in “ 10. Using Microsoft application” from CD. N-GEN uses window Media 9 Series.



MS word Pad: write and manage document. Microsoft word pad collaborates with Microsoft Word from desktop PC, thus, user can easily excess to own documents. More details are available in “ 10 using Microsoft application” from CD.



My documents: store and view the program, file and data. Users make various file using applications, and store to my documents. Also users can read and modify the files from my documents.

N-GEN has function similar to right mouse function of desktop PC. Such as ...
With Stylus pen, continue to press the screen, right button menu will be popped up. Icon arranging, desktop refreshing, file copy/cut/paste, new folder and new properties setting are possible function

TaskBar

Taskbar of windows CE 5.0 is structured simply and easily to use. Below picture shows structure of Taskbar.



Start icon: Start icon is the most initial point of N-GEN program. Press start menu Using Stylus pen. Program, favorites, document, setting, help and run will be popped up.

Now from each menu, subsidiary executable program will be popped up as on picture. User can choose program to execute by this way. Start menu of Windows CE 4.2 is quite similar to desktop PC' s.

Taskbar shows status of character input, battery, network connection and executing program.

Using Taskbar and Start Menu which is located under Start > Settings, user can configure the Taskbar into their preference.

Next will be shown functionality of icons from taskbar



Quick connection: Press quick connection button, then program connection menu will be popped up. With quick connection, user can excess to frequently used program faster. screen rotation, IrDA, Alarm, back light and task manager are there.



Screen rotation: rotate the screen to different angle. With Screen rotation, N-GEN screen can be rotated vertically or horizontally. Desktop screen is not applied with this function **to get better rotation, set up the size of desktop screen within 240 x 240 pixels.** To rotate the screen

1. Press quick connection icon, then select screen rotation.

Execute the application program. Screen rotation is available to My Computer, Media player, my document, Internet explore, Microsoft word, image viewer and personal management.

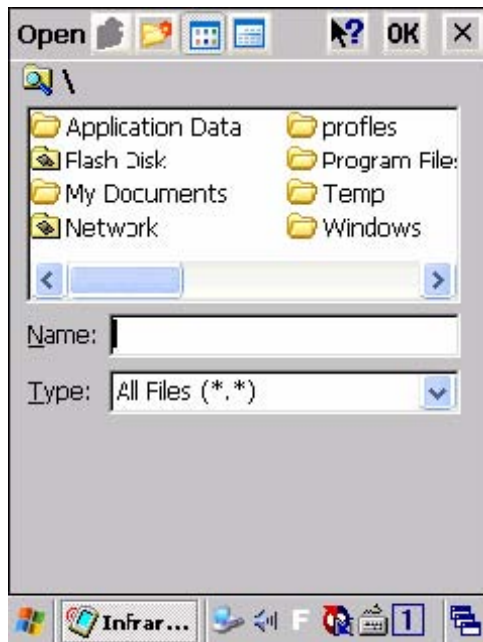
<p>Caution</p>	<ol style="list-style-type: none"> 1. Software keyboard is only option to input characters in screen rotation mode. 2. It may happen that executing program is not fitted into screen in screen rotation mode. 3. To rotate application program horizontally, rotate the screen first, then execute the program
-----------------------	---



IrDA communication: execute IrDA communication using OBEX communication rule. OBEX for Microsoft Window CE 5.0 provides binary protocol to exchange data between various devices effectively and easily. This function is run by IrDA protocol. N-GEN is able to communicate with Any devices including desktop, notebook, pocket PC and other PDA that have a OBEX for IrDA communication

To use IrDA communication:

1. Place IrDA port of N-GEN facing IrDA port of the device to communicate with.
2. Press Quick connection icon, then select IrDA communication
3. After executing IrDA communication, connection status message will be shown as above picture. When device is found to communicate with, device name will be shown, and also “ send” , “ connect / disconnect” icon will be shown same time.
4. To send file or data, press, “ send “ icon
5. Open file screen will be popped up, select file to send and press “ OK” .
6. In the middle of IrDA communication window, file/data sending message will be shown. When file/data is sent successfully, a message saying, “ file sent 100%” will be shown and file sending is completed.



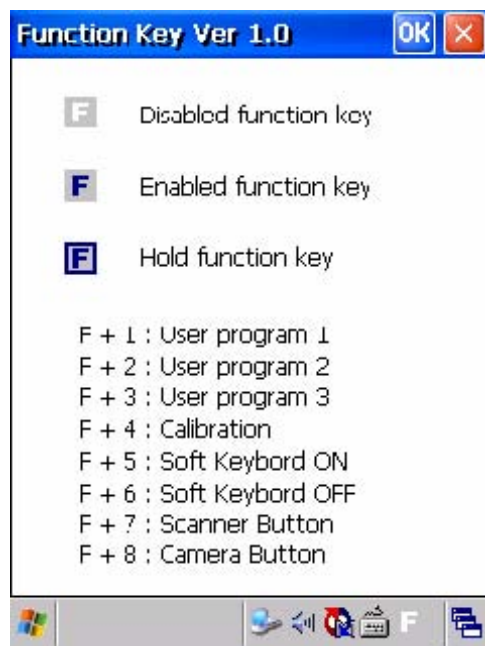
7. When file or data is being downloaded to N-GEN from other devices, downloading message will be shown. Downloaded file is stored in My Computer>My Received Files. A message saying “ File downloaded successfully” indicates that downloading file is completed
8. When IrDA communication is completed, press “ Disconnect the communication” icon and close the IrDA communication program.



Wireless LAN: You can use internet with Wireless LAN. Wireless LAN supports IEEE 802.11b/g.

How to make a connection with Wireless LAN:

1. Turn on the AP (Access Point) which supports IEEE 802.11b/g.
2. TAP on 'WLAN ON' under QUICK MENU icon on the tray bar.
3. Please select the desired access point on WLAN connection manager and TAP on 'Connect'.
4. TAP on 'WLAN OFF' under QUICK MENU icon on the tray bar to finish WLAN connection.



Function Key Mode: If you press the down button on the left side, you can change the Function Mode.

How to use the Function Key:

1. Press 1~8 number keys on Function Enable or Hold Mode.
2. Under Start < Programs < Utility < Buttons you can set the ' User programs'.



Upper/lower case Selection:

Press this icon to change the letter to upper or lower case. If you select upper case, capital letter and its character will appear on the number key pad. It serves the same function with Shift key.



Hot key Selection:








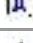

If you use hot key such as “ z ” , “ x ” , “ c ” and “ v ” , you can carry out Cancel, Cut, Copy, and Paste, respectively.

If you want to change the features of soft keyboard, select keyboard in Go to Start> Setting> Control Panel> Input Panel and click the option you like to set up.

Input Method:

To carry out character key-in using [keyboard] input, press keyboard icon on the taskbar. In case of {Script Reorganization}, you can key in by activating Transcriber in the following order. Start → program → Transcriber. When you press the keyboard once, it will appear on the screen and one more press will make it disappear.

Status indication icon: The icons to indicate status on the N-GEN taskbar are as follows

Status indication icon on the taskbar	
Icons	Details
	Low battery.
	Battery in charging.
	Connected to Desktop PC by USB
	Quick connection icon
	Phone program icon
	Function Status icon
	Keypad Alpha Numeric Status icon
	Caps Lock ON icon
	Network connection status. Status of Internet connection through CDMA Status of Internet connection through WLAN



Reference

N-GEN has the similar function as right mouse click of desktop PC. Press LCD touch panel by a Stylus pen, then right button menu will be shown

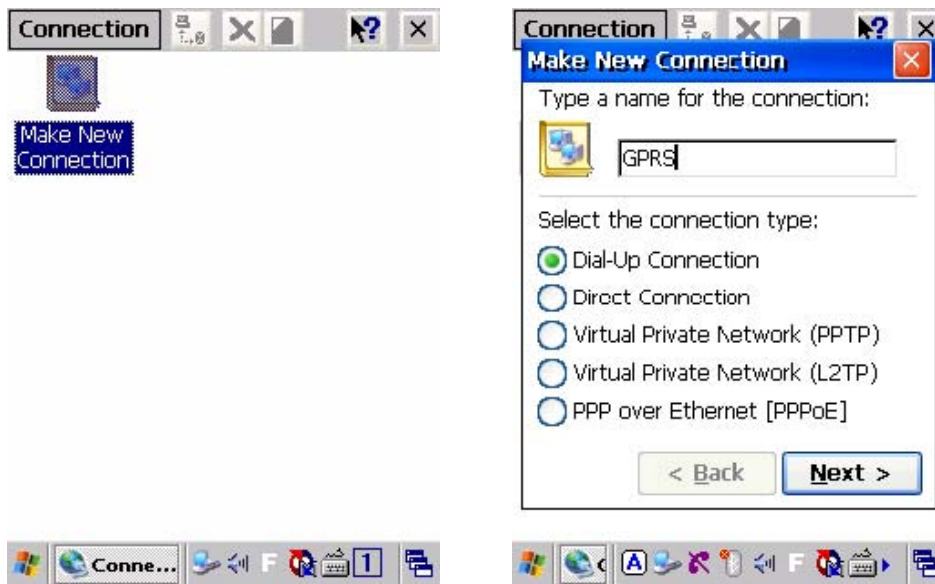
Under right button menu, there are functions to arrange icons, refresh desktop screen, cut/copy/past file and data, create a new folder, and set up properties

6. Setting High Speed Internet

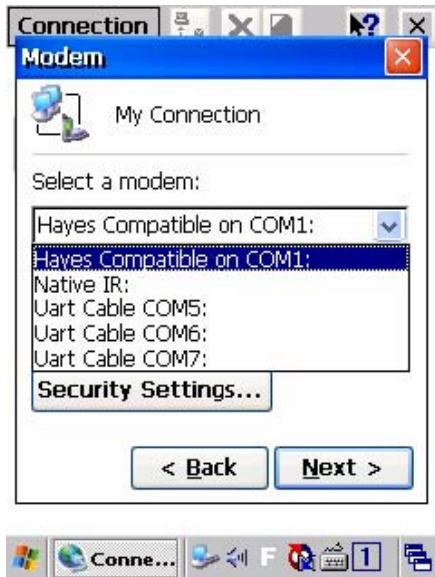
※ Internet setting is set to the corresponding country as default. User can change the settings using GPRS Setting option on the GSM Phone Program. For detailed manual setting you can refer to the following explanation.



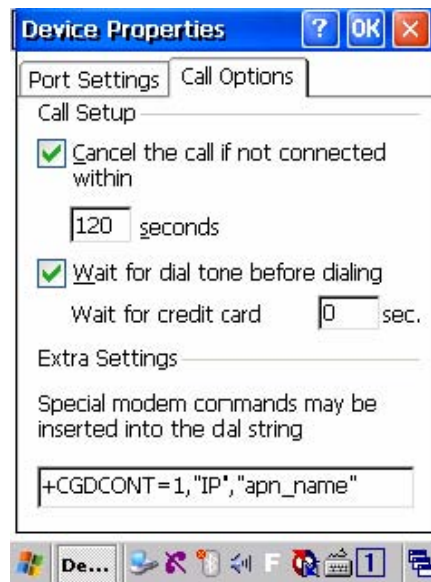
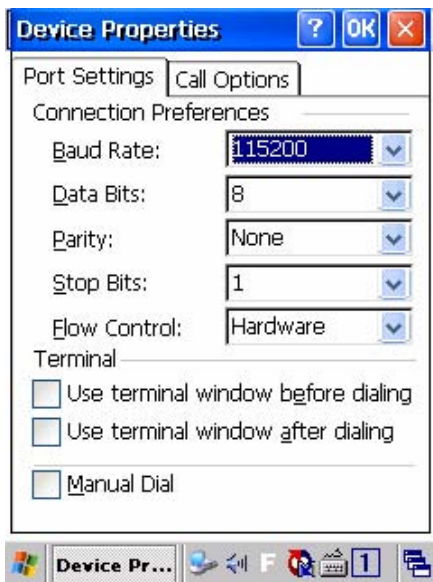
1. Start / Settings / Network and Dial-up Connections or Control Panel / Network and Dial-up Connections.



2. Select make new Connection. Enter the name of connection. check dial-up connection, and press next..



3. Select Hayes Compatible on COM1



4. Press [configure..], and set [Device properties] .

Port Settings Tab : Set a Baud Rate to 115200. other data remain as the picture below.

Call Options Tab : On Extra settings Enter special modem commands
“ +CGDCONT=1” ,” IP” ,” apn_name” then press OK.




5. After done with configuration, input “ *99***1#” in the ‘ Phone number’ edit box and leave all the rest untouched. As last press ‘ Finish’ button.



6. Now the connection icon would have been generated on the ‘ Network and Dial-UP Connections’ Window as the picture below. On the window which pops up by double-clicking on this icon, user needs to input the username and the password, provided by the SIM card or Network provider.



Check mark “ save password” , then press “ connect” to finish Internet setting
After using Internet, press  button from taskbar to disconnect



7. On the internet explorer, select View >Internet Options and under Autodial name on the

Connection Tab, you can choose the name which has been generated. If the configuration setting was not correct, the name would not be displayed.

Now you can use internet just by running Internet Explorer without extra procedure for Dial-Up Connecting.

Internet connecting through desktop PC

This connection method is used in “ PC connection” in control panel, and with partnership setting, Internet is available through USB Active Sync. This method is a economical way when user downloads upgrade program or files to PDA while USB connection is used.

The Setting step is as next.

Explore > View> Internet option > connection> Autodial name choose the name [USB@PocketPDA], this option is only available when Desktop PC is online with Internet.

7. How to optimize battery longevity

When you work outside office or home, you will especially want your battery to last as long as possible. There are several tips for longer battery life.

A. If possible, use external power supplies.

If possible, always connect your device to external power supplies using battery charger. In particular, it is strongly recommended to use external power in the following cases:

- When you set up Dial-up connection (The more communication with local base station, the more power consumed.)
- When you use backlight function
- When connected to a desktop computer
- When you use other peripheral devices
- When you have to run LED lamp to flash for a long time

B. When you are not using the device, turn it off.

When you use the battery power, if you do not touch the keyboard or use a stylus pen or mouse for more than 3 minutes, the device will automatically be shut down. Shorten this time to have longer battery life

C. LCD Backlight and Keypad Backlight set to the minimum brightness.

On Start > Settings > Control Panel > Backlight > Level, scroll down the level of brightness at Battery mode to the minimum. On the Backlight tap, check 'Battery power, and device is idle' and set the time to 15 second.



If battery power is too low, “ Too Low Battery” message will appear on the taskbar and start window. In that case, you have to recharge N-GEN using the charger. Otherwise, it may cause problems in the system.

8. Using Demo Program of N-GEN.



Reference

Installed demo program has very limited functions to test PDA function. More API and SDK will be available for the technical support.

[Descriptions of RFID demonstration program]

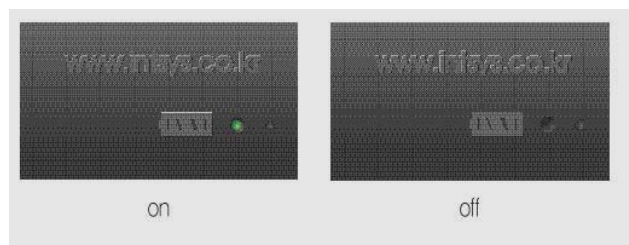
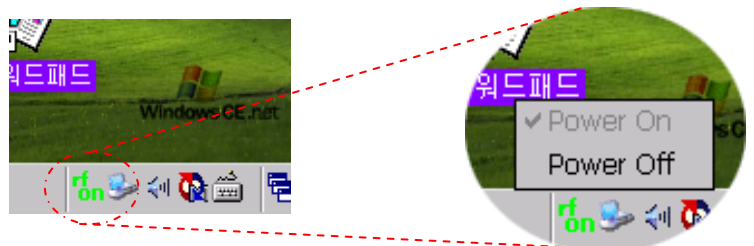
Running RFID program with N-GEN

n-Gen collects data of RFID tags because it has RFID UHF reader.

How to read RFID tags

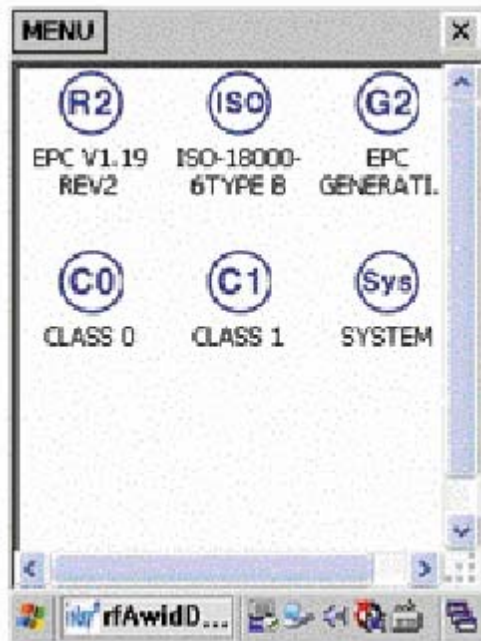
1. Run RFID Demonstration program on the screen.

(If you can't see the icon on the screen, please run WFlashDiskWRFIDWIntsysRfReader.exe.



2. Check the RFID Lamp on the back side of n-Gen out after click the RFID button at the LCD.

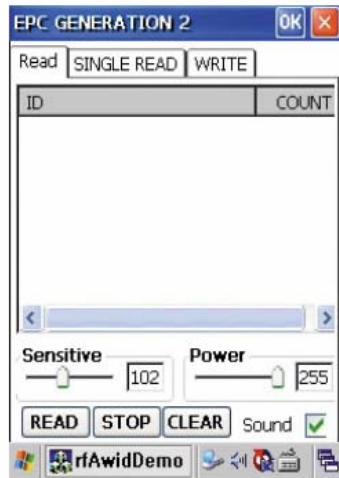
3. Double click the protocol which you want to run.



4. Make n-Gen face RFID tags.



5. Click the Read button.



Warning

Reading rate would be the best if you put n-Gen and tags at same line.

This device complies with Part 15 of the FCC Rules.

Operation is subject to the following two conditions :

- (1) This device may not cause harmful interference, and
- (2) This device must accept any interference received, including interference that may cause undesired operation.

CAUTION : Changes or modifications not expressly approved by the party responsible for compliance could void the user s authority to operate this device.

9. Q&A

[RFID function]

Q: What should I do if RFID doesn't work?

A: First, please check RFID is running as see the lamp on back side of n-Gen. Please contact us if it doesn't work even the lamp turned on.

[Phone function]

Q: I have many telephone numbers, do I need to use PDA only to register them ?

A: Sync. is possible with schedule, address book and inbox of Microsoft outlook 2000/2002. Use a outlook of desktop PC to register your phone numbers, then, synchronized with PDA. However outlook express is not reliable with PDA. Please be aware.

Q: how can I backup the address book?

A: It is configured by the phone program that the detected modification on the phonebook will be automatically backed up every 2 minutes. If you wish to do it manually, Go to Start > Programs > Utility > Ms-Backup and check PIMS Data to back up.

Q: how can I control the volume of phone ringer and other party's voice?

A: The volume of Phone ringer, you can adjust on the bell-sound menu under configuration and Adjusting other party's voice volume while on the phone, you can do it using up, down button on the left side of N-GEN.

Q: I forgot the password for phone program

A: defaults value is " 0000" . Password you set up will stay even after reset the N-GEN. So make sure to memorize it or have it stored other place. Otherwise, please contact A/S center

[speed related]

Q: the speed has been slowdown suddenly.

A: multi-tasking may slow down the speed. Loading multi program at once may also causing performance down.

Visiting website with many images may causing slow down since data can be remained on cash memory. Go to [explore > view> internet option], and then delete cash and history. If high quantities of data are saved to folders other than Flash Disk folder, it may takes SDRAM space causing slow speed. Please use an exclusive device, CF or SD for it

If some of application program may cause the slow down, try soft reset. The problem cannot be solved by soft reset, try hard reset. Make sure to back up important data before hard reset. Use this option only when application program that has no compatibility with N-GEN such as games are causing the problem

[Multimedia]

Q: I downloaded movie, can I use PDA to watch it?

A: Though, our N-GEN is not performed as desktop PC, N-GEN has been upgraded with multimedia player compared to other PDA. Adding extra memory and arranging a screen size of movie to N-GEN, movie will be possible to be shown.

Q: what is file format I can use with N-GEN?

A: that is WMA, MPG, ASF, ASX (online), MP3, WAV, AVI (may differ by Codex)

Q: which format are good fits to N-GEN?

A: that are MPEG1 Video / Audio WMA for PDA.

To watch movie in PDA, download movie set for PDA or encode it to PDA size.

Q: how can I escape from full screen of movie ?

A: touch the screen one time , or use ESC key left side of PDA

Check up list before requesting A/S

[Dark screen]

If power button is pressed too long, LCD backlight may go off.

Press power button again, backlight will be back on

If LCD backlight is set too low, it may cause dark screen.

Press [start > program> utilities> backlight], and then reset the brightness of backlight

Backlight may be set on auto off mode

Press [start>setting>control panel> display], and then uncheck the light off from light tap.

Backlight will be always on

[Stylus pen input error]

if screen shows improperly, press [start> setting>control panel> stylus], then revise the screen using revision tap.

If screen is not responding to double click, press [start>setting> control panel> stylus, then reset double click speed.

[Slow down of program speed]

Using many programs at once may cause the slowdown. Reduce number of executing programs..

Insufficient program memory of PDA may cause the slowdown

Press [start>setting> control panel> system], and then extend boundary of program memory using slider from memory tap.

If Storage is taken large memory space, move data to backup, then extend program memory more.

Appendix. [glossary]

Word frequently used in PDA

Backup: copied data stored in safe place such as PDA file, desktop PC, Compact flash or other device

Restore: returning device status to latest stage of data after last backup

.
Battery adapter: external power supplier to PDA transforming AC power source to DC.

.
Compact Flash: despicable memory device for peripherals such as high performance memory card, scanner, Camera, wireless LAN card.

USB Sync Cradle: a device to connect PDA to desktop PC.

.
Driver: a program that controls device

.
IrDA port: data transmitting port using signal of infrared rays

IrDA (Infrared Data Association Protocol): standard rules to use infrared rays communication between devices

POP3(Post Office Protocol v3):a protocol used to retrieve email from a mail server

ROM (Read-Only memory): a flash memory that has Microsoft Windows O/S for PDA and installed program

Flash Disk: a memory that data can be saved with no power source, and is read/written parts of ROM

Stylus Pen: a pen used to write touch screen.

Touch screen: a type of display screen that has a touch-sensitive transparent panel covering the screen

SD(Secure Digital): A device used to provide security and expandability and high processing ability to electronics

About our service

We provide warranty of our product according to the consumer harm compensation regulation.

- Please contact the seller when the product has problems.
(Otherwise, please contact our call service center.)
- Please get the written date for free warranty which is verified from the date.
(Otherwise, the date is calculated after 6 months from manufacture date.)

Model : N-GEN"2" (INT-910HA)

Date of purchasement : SERIAL NO:

Store:

Free services

You can get the free services when you find natural problems within 1 year after you bought.

Kinds of Consumer harm		contents	
		Before 1 year	After 1 year
In case to occur critical problems with in 10 days		replace	
Possible repair	In case to have same problems 5 times	Free	charged
Impossible repair	Impossible repair even having materials	replace	Charged replacement
	Impossible repair because of the lack of materials	replace	Plus 10% charged replacement

Charged Services

1. Not in case of break down

Please read this manual carefully to avoid the charged service.

(Regarding to special rules when repair is impossible)

2. Consumer mistakes

- Repair and open the product by consumer
- Other people beside the sellers and engineers repair
- Break downs by drop
- Break downs using accessories which the manufacture doesn't designate

3. And others

- Break downs by natural disasters
- Out of durability (Battery)

INTsys Co., Ltd

This warranty is valid in Korea.

Q&A and A/S Consulting

Please contact us as below if you have questions and problems with our products.

You may get fast directions on the product box and program company.

- Representative number : 82-2-3281-1777
/FAX : 82-2-3281-1528
- Only for A/S consulting : 82-2-864-5509
- Address: 4th fl. Heehoon Tower building 110-1 Guro5dong, Guro-gu, Seoul (152-055)
- Available hours : 9 A.M.~ 6 P.M.

* Online A/S Services : <http://www.intsys.co.kr>