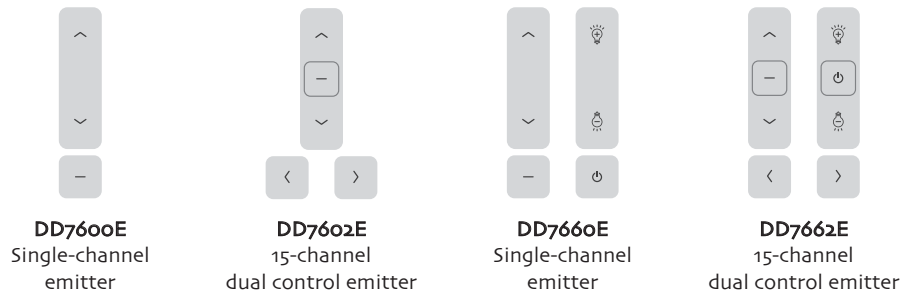


# DD7600E Series

## Handheld Emitter Instruction

Version: A/01

### Instruction Of Buttons



### Key Symbol



### Technical specification

Battery: 3VDC (AAA battery × 2)	Battery life: >2 years
Working temperature: -10°C~+50°C	Radio range: 150 meters outdoor, 35 meters indoor
Radio frequency: 433.92MHz	Dimension: 144mm × 45mm × 14.8mm

### Warning

- 1, Emitter couldn't expose to moisture or be struck heavily, or else the emitter life will be affected.
- 2, If the emitter is not so sensitive or the radio range becomes shorter, pls check whether to change the battery.
- 3, It's forbidden to use different type battery to avoid any dangerous risk.
- 4, Dispose of used batteries properly.

### 1. Jog / Tilt Mode

Note: 1, The JOG UP and JOG DOWN buttons only control the channel where the current emitter is located, Release the button to send code.  
2, This function is available in all series of emitters.

JOG UP × 1



Motor jog up

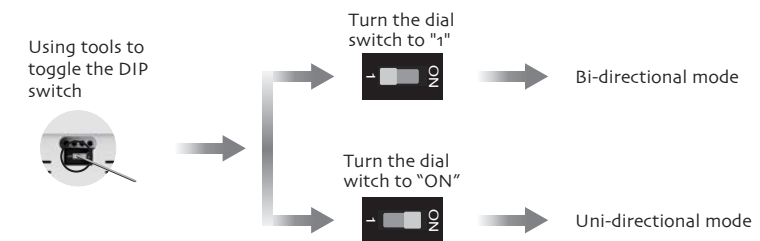
JOG DOWN × 1



Motor jog down

### 2. DIP Switch Function

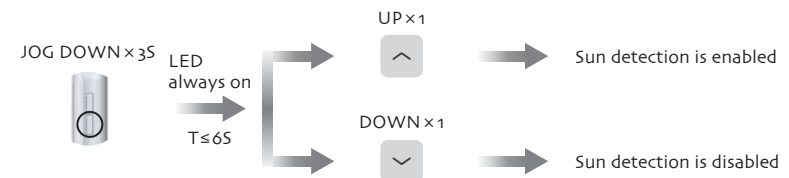
Note: The factory defaults to "1" and defaults to bidirectional mode.



### Following 3/4 Only Apply to Emitter Without LCD Display

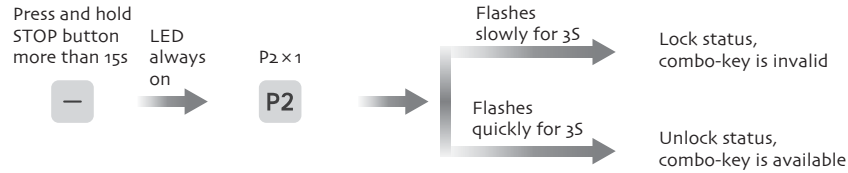
### 3. Enable / Disable Sun Detection (In bi-directional mode)

Note: Long press JOG DOWN button until the LED stays on for 6S, and the operation is effective. Press STOP button to directly exit the setting.



#### 4. Lock / Unlock Combo-key Operation

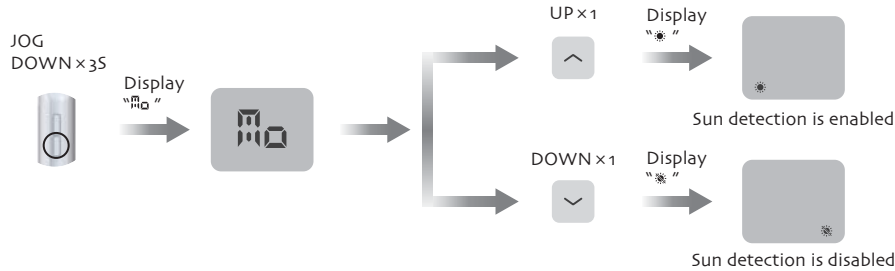
Note: 1,Both setting buttons (P2) can be operated.  
2,The factory default is unlock status, repeat same operation to switch status circularly.  
3,When the combo-keys are locked, if you press the combo-keys, the emitter won't send any signal and LED won't flash.



#### Following 5/6/7/8/9 Only Apply to Emitter With LCD Display

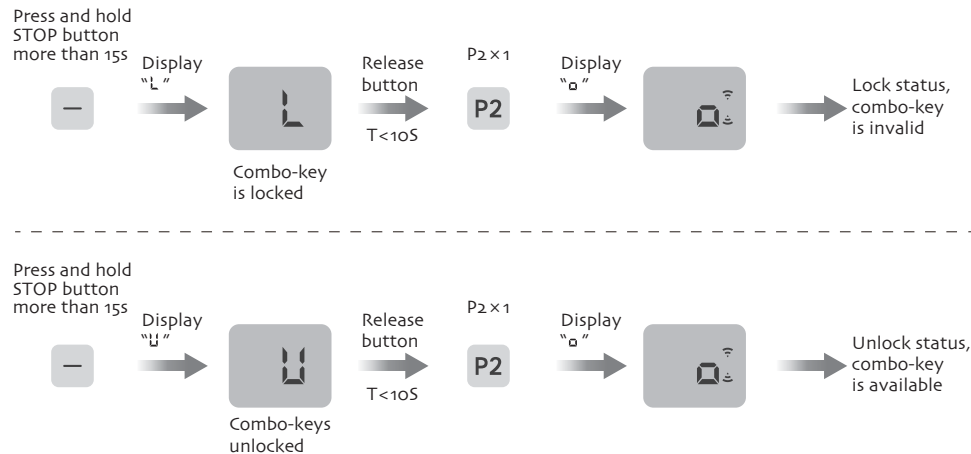
#### 5. Enable / Disable Sun Detection (In bi-directional mode)

Note: The motor needs to be paired with wind-rain-sun sensor and only when the motor has a limit, the sun detection function can be enabled and disabled.



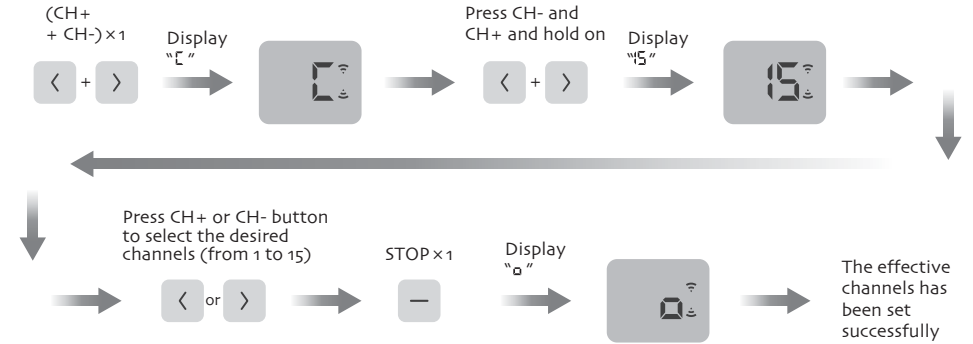
#### 6. Lock / Unlock Combo-key Operation

Note: 1,Both setting buttons (P2) can be operated.  
2,The factory default is unlock status, repeat same operation to switch status circularly.  
3,Under lock status, the combo-keys don't work; Under unlock status, the combo-keys will work normally.



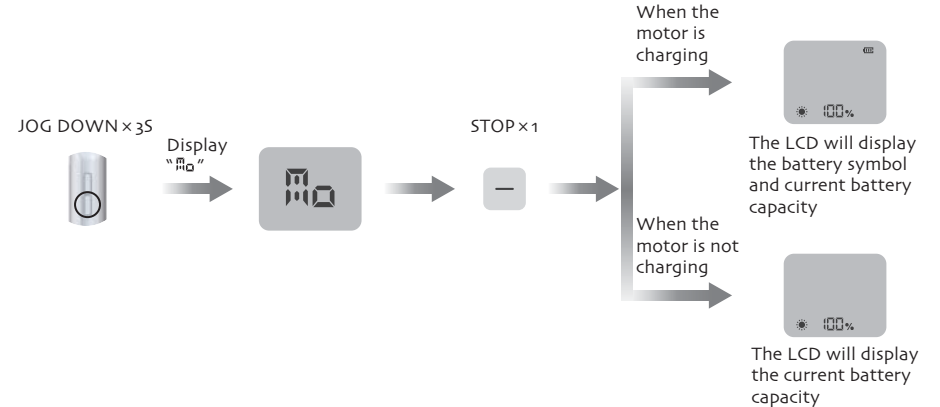
#### 7. Set Number Of Channels

Note: In the setting status, press UP or DOWN button to exit quickly. Repeat the same process if you want to adjust the Max. channels.

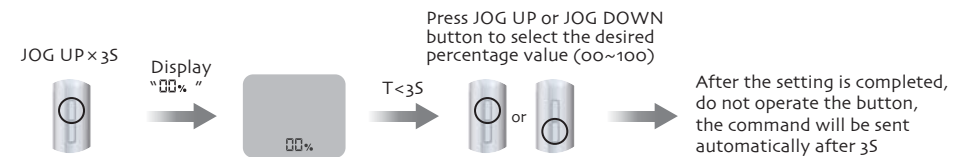


#### 8. Battery Check Function (In bi-directional mode)

Note: 1,Only the paired motor can check the battery and the current channel can only check one paired motor.  
2,Only the motors which are paired by long pressing STOP button for 25s will have the battery check function.



#### 9. Motor Percentage Running (In bi-directional mode)



## FCC Warning Statement

This device complies with Part 15 of the FCC Rules. Operation is subject to the following two conditions:

(1) This device may not cause harmful interference, and (2) this device must accept any interference received, including interference that may cause undesired operation.

Note: This equipment has been tested and found to comply with the limits for a Class B digital device, pursuant to part 15 of the FCC Rules. These limits are designed to provide reasonable protection against harmful interference in a residential installation. This equipment generates, uses and can radiate radio frequency energy and, if not installed and used in accordance with the instructions, may cause harmful interference to radio communications. However, there is no guarantee that interference will not occur in a particular installation. If this equipment does cause harmful interference to radio or television reception, which can be determined by turning the equipment off and on, the user is encouraged to try to correct the interference by one or more of the following measures:

- Reorient or relocate the receiving antenna.
- Increase the separation between the equipment and receiver.
- Connect the equipment into an outlet on a circuit different from that to which the receiver is connected.
- Consult the dealer or an experienced radio/TV technician for help.

NOTE 2: Any changes or modifications to this unit not expressly approved by the party responsible for compliance could void the user's authority to operate the equipment.