

A Wireless shielding mode

Additional function

Setting button × 6s



Run for hint × 2



Release button



Red LED flashes twice

OK

Enter the wireless shielding mode, turn off the wireless reception function.



Short press the setting button on the receiver to restore the wireless reception function.

A Reset to factor mode

Additional function

Setting button × 14s



Run for hint × 4



Release button



Red LED flashes four times

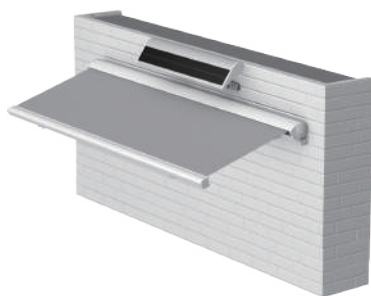
OK

Reset to factory mode successfully

A Installation Method

Additional function

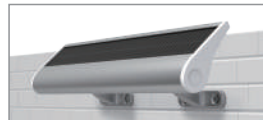
Installation position 1: Side Mounting



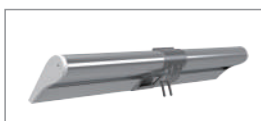
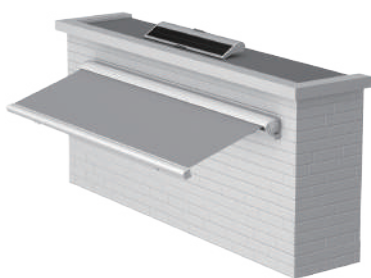
✓ Correct installation method

Install the bracket as shown in the figure

✗ Wrong installation method



Installation position 2: Top Mounting



✓ Correct installation method

Install the bracket as shown in the figure

✗ Wrong installation method



DD1536H/DD1538H

Solar Station With Integrated Receiver Specification

Version NO.: A/02

T Product description

Technical support

DM35DS-10N/9R
DM35DS-13N/13R
DM45DS-20N/10R

DD1536H

DM35DS-10N/9R
DM35DS-13N/13R
DM45DS-20N/10R
DM45DS-50N/5R
DM45DS-50N/12R

DD1538H

- Stall protection function
- Low power consumption sleep mode
- Output voltage: 9.5V~12.6V
- Working temperature: -15°C ~ 55°C
- DD1536H Maximum output power: 80W
Size: 400mm × 50mm
- DD1538H Maximum output power: 90W
Size: 580mm × 50mm
- Can use the MICRO USB 5V Android charging line
- One DD1536H/DD1538H can store maximum 10 emitter channels. If there are already 10 channels, it will take turns to cover former channels from last one if adding more channels.



- ① When emitter is under group control, match code will be invalid.
- ② The motor works continuously for 4 minutes and then stops automatically.

T Matchable emitter

Technical support

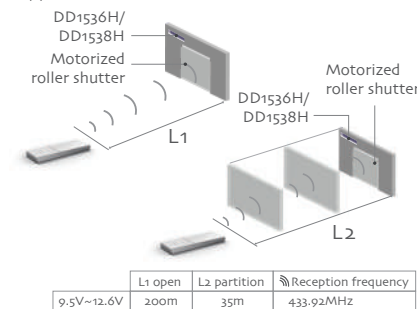
DD1600H
Single-channel emitterDD1602H
15-channel emitterDD1800H
Single-channel emitter

T Control range

Technical support



Effective transmitting distance may have deviation due to actual environment



T Button specification

Technical support



- ① After connect to USB, when the battery voltage is higher than 12V, the green LED indicator is always bright.
- ② After connect to USB, when the battery voltage is higher than 10.2V~12V, the green LED indicator light flashes.
- ③ When the battery voltage is less than 10.2V, the red LED indicator flashes 10 times, indicating low voltage.



LED indicator light (red light indicator function, green light indicates charging status)

Charger jack

Stroke button

RF exposure statement

This equipment complies with the FCC radiation exposure limits set forth for an uncontrolled environment. This transmitter must not be co-located or operating in conjunction with any other antenna or transmitter.

FCC Warning

This device complies with Part 15 of the FCC Rules. Operation is subject to the following two conditions:
(1) This device may not cause harmful interference, and (2) this device must accept any interference received, including interference that may cause undesired operation.

Note: This equipment has been tested and found to comply with the limits for a Class B digital device, pursuant to part 15 of the FCC Rules. These limits are designed to provide reasonable protection against harmful interference in a residential installation. This equipment generates, uses and can radiate radio frequency energy and, if not installed and used in accordance with the instructions, may cause harmful interference to radio communications. However, there is no guarantee that interference will not occur in a particular installation. If this equipment does cause harmful interference to radio or television reception, which can be determined by turning the equipment off and on, the user is encouraged to try to correct the interference by one or more of the following measures:
—Reorient or relocate the receiving antenna.
—Increase the separation between the equipment and receiver.
—Connect the equipment into an outlet on a circuit different from that to which the receiver is connected.
—Consult the dealer or an experienced radio/TV technician for help.

NOTE 2: Any changes or modifications to this unit not expressly approved by the party responsible for compliance could void the user's authority to operate the equipment.

A

Additional function

Add emitter

Method one

Setting button × 2s

Run for hint × 1

Red LED always bright once

Release button

Stop button × 2s

Run for hint × 2, Red LED flashes × 3

OK

Success add emitter

Method two

①During the settings, the time between two operation must be shorter than 10s, otherwise it will quit the setting.
②Emitter **a** is the one already matched code, while emitter **b** has not, need to add.

P2 × 1

Run for hint × 1, Red LED flashes × 1

P2 × 1

Run for hint × 1, Red LED flashes × 1

Stop button × 2s

Run for hint × 2, Red LED flashes × 3

OK

Success add emitter **b**

Method three

①During the settings, the time between two operation must be shorter than 10s, otherwise it will quit the setting.
②Emitter **a** is the one already matched code, while emitter **b** has not, need to add.

P2 × 1

Run for hint × 1, Red LED flashes × 1

P2 × 1

Run for hint × 1, Red LED flashes × 1

P2 × 1

Run for hint × 2, Red LED flashes × 3

OK

Success add emitter **b**

A

Additional function

Switch Direction

Method one

Within 30 seconds after the setting up or add emitter

(Up button+ down button) × 2s

Run for hint × 1

Release button

OK

Success switch direction

Method two

Setting button × 10s

Run for hint × 3

Release button

Red LED flashes three times

OK

Success switch direction

A

Additional function

Delete one emitter

Method one

Setting button × 2s

Run for hint × 1

Red LED always bright once

Release button

Stop button × 2s

Run for hint × 2, Red LED flashes × 3

OK

Success delete emitter

Method two

①During the settings, the time between two operation must be shorter than 10s, otherwise it will quit the setting.
②Emitter **a** and **b** are already matched code, while emitter **b** has need to delete.

P2 × 1

Run for hint × 1, Red LED flashes × 1

P2 × 1

Run for hint × 1, Red LED flashes × 1

P2 × 1

Run for hint × 2, Red LED flashes × 3

OK

Success delete emitter **b**

A

Additional function

Delete all emitters

Method one

P2 × 1

Run for hint × 1, Red LED flashes × 1

Stop button × 1

Run for hint × 1, Red LED flashes × 1

P2 × 1

Run for hint × 2, Red LED flashes × 3

OK

Success delete all emitters

A

Additional function

Jog-move / continuous mode switching

Continuous motion mode

①During the settings, the time between two operation must be shorter than 10s, otherwise it will quit the setting.
②In the jog-move mode, short press the up button or down button to release within 2 seconds, and the motor will start running by jog-move. If long press is longer than 2 seconds, the motor will run continuously.

(Up button+ down button) × 5s

Run for hint × 1

Release button

Stop button × 1

Run for hint × 1, Red LED always bright × 1

OK

Switch to jog moving mode

Jog-move mode

(Up button+ down button) × 5s

Run for hint × 1

Release button

Stop button × 1

Run for hint × 2, Red LED flashes × 3

OK

Switch to continuous moving mode