

Tubular Motor- DM35F/S Specification



(A-00)

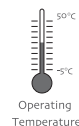
Product introduction

⚠ One motor maximum can store 10 channels, over 10 channels, if still need add new emitters, it will be repeating covered last channel.



Functional features:

- Setting up + add emitter +delete emitter
- With up and down limit manually setting
- Step-move limit setting
- Group control function
- Direction Change
- Resistance protection function
- Set /delete limit function
- With third limit position function

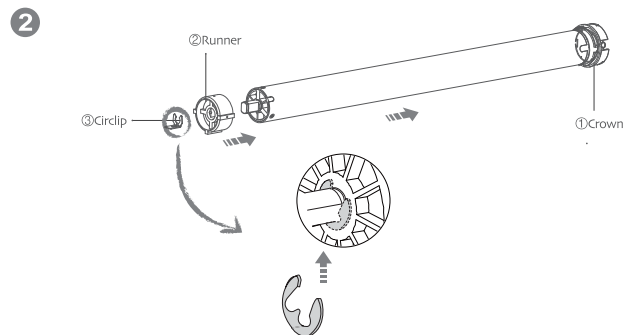
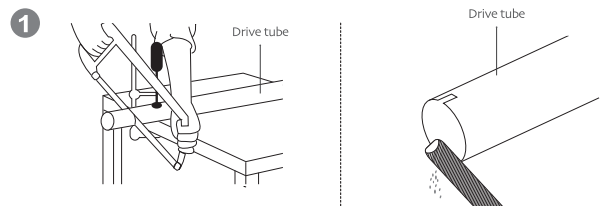


Parameter

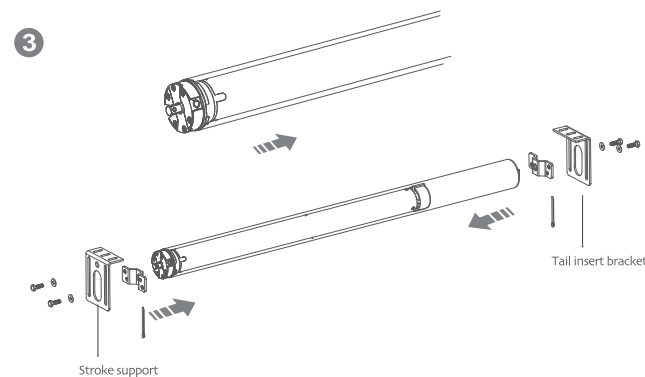
Type	DM35F/S-6N/33r
Rated Torque(N.m)	6N.m
Rated Current(A)	0.53A
Rated Voltage(V)	120V

Motor Installation

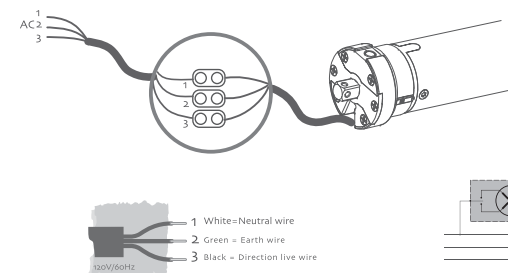
- ①Driving tube must be close-fitting with crown and drive adapter.
- ②Choose crown and drive adapter based on the driving tube.



3



4



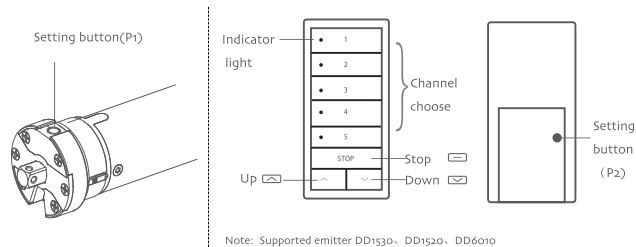
Operation note

⚠ Please read the following precautions before use:

1. Please refer to the AC wiring diagram
You must isolate the extra wires. The wire pressing block in the accessory bag is available for this usage, or you can use other method.
2. Don't operate motors when in low voltage alarm.
3. Operating:
①The valid interval of the emitter button is 6s, the emitter will quit the set after 6s.
②The motor will run or beep for hint, please do the next step after the hint.
4. Set limit position:
①Before use, you have to set up/down limit position, and it is invalid when the up/down limit and the third limit are at the same location.
②After limit setting, with power and memory function.
③Limit delete will clear all limit memory.
④It will exit limit setting when program there is no operation for 2 minutes.
⑤When the motor moving up or down, press the setting button P2 once, the motor will be under the step-moving status, press the setting button P2 again, the motor will Run continuously. Press the stop button, it will exit the limit position setting.
5. If the emitter is lost, please set up again with new emitter.



Button specification



1 Setting up

P2→P2→Up/Stop

If you want to change the direction of rotation, please do the reverse of direction setting.



Note: set up if no limit position, otherwise add code, it will not delete the elder emitters and the limit position.

2 The reverse of direction setting

Up+Down



Note: repeat the reverse of direction setting operation, the direction of motor can be reverted in a loop

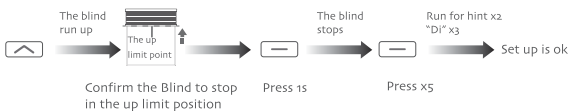
3 Limit position

Method one

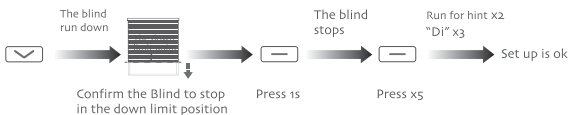
1, Enter the limit setting mode (P2→Up→P2)



2, Set up limit (Up→Stop→Stop)

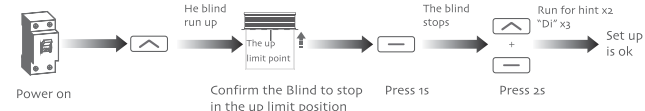


3, Set down limit (Down→Stop→Stop)

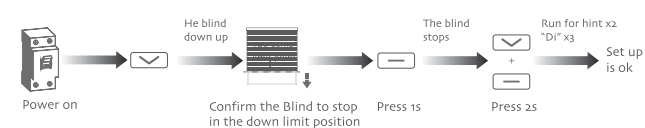


Method two

1, Set up limit (Up+Stop)



2, Set down limit (Down+Stop)

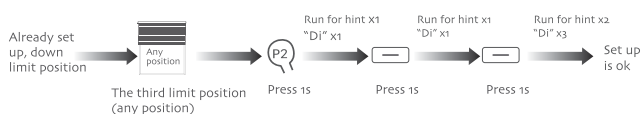


Note: The motor will dot move if there is no limit position; it will continuous run if long press(25) up or down button . when setting limit position , Method one and method two can't crossover operation.

4 The third limit position setting

1, The third limit position setting

①After the up limit and down limit setting, you can set the third limit point between them as the half open position;



2, The third limit cancel (P2→Stop→Stop)



5 Dot-move setting

P2→Up→Down/ Up+Down→Stop

Method one



Method two

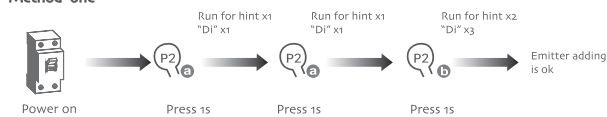


Note: Run and beep one time, enable the dot-move; run 2 times and beep 3 times, disable the dot-move; If there is no limit position there is no dot-move function.

6 Add Emitter

P2 a →P2 a →P2 b / P2 a →P2 a →Stop b

Method one



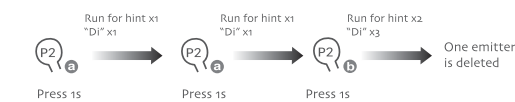
Note:Emitter a is the one already matched code, while emitter b has not

Method two



7 Delete one emitter

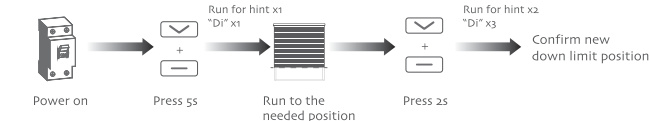
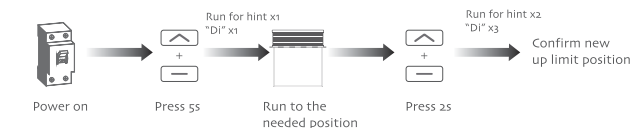
P2 a →P2 a →P2 b



Note:With the same method,you only can delete the emitter b,not the emitter a

8 Fine-tune setting

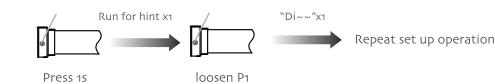
Up+Stop→Up+Stop/Down+Stop→Down+Stop



Note: to Fine-tune set, the blind must in the up/down limit position

P1 button operation

1, Set up or add emitter

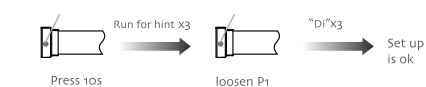


Note: set up if no limit position, otherwise add code, it will not delete the elder emitters and the limit position

2, The reverse of direction setting



3, Restore factory settings



Fault and solution

NUMBER	PHENOMENON	REASON	PROCESSING METHOD
1	Motor can't running	a, Motor overheating. b, Set up fault, c, If long press the set button, the motor still don't run, power short-circuit, Circuit board bad or motor bad.	a, When motor is cooled b, Set up again c, Contact service

FCC STATEMENT

1. This device complies with Part 15 of the FCC Rules. Operation is subject to the following two conditions:

- (1) This device may not cause harmful interference.
 - (2) This device must accept any interference received, including interference that may cause undesired operation.
2. Changes or modifications not expressly approved by the party responsible for compliance could void the user's authority to operate the equipment.

NOTE: This equipment has been tested and found to comply with the limits for a Class B digital device, pursuant to Part 15 of the FCC Rules. These limits are designed to provide reasonable protection against harmful interference in a residential installation.

This equipment generates uses and can radiate radio frequency energy and, if not installed and used in accordance with the instructions, may cause harmful interference to radio communications. However, there is no guarantee that interference will not occur in a particular installation. If this equipment does cause harmful interference to radio or television reception, which can be determined by turning the equipment off and on, the user is encouraged to try to correct the interference by one or more of the following measures:

Reorient or relocate the receiving antenna.

Increase the separation between the equipment and receiver.

Connect the equipment into an outlet on a circuit different from that to which the receiver is connected.

Consult the dealer or an experienced radio/TV technician for help.