

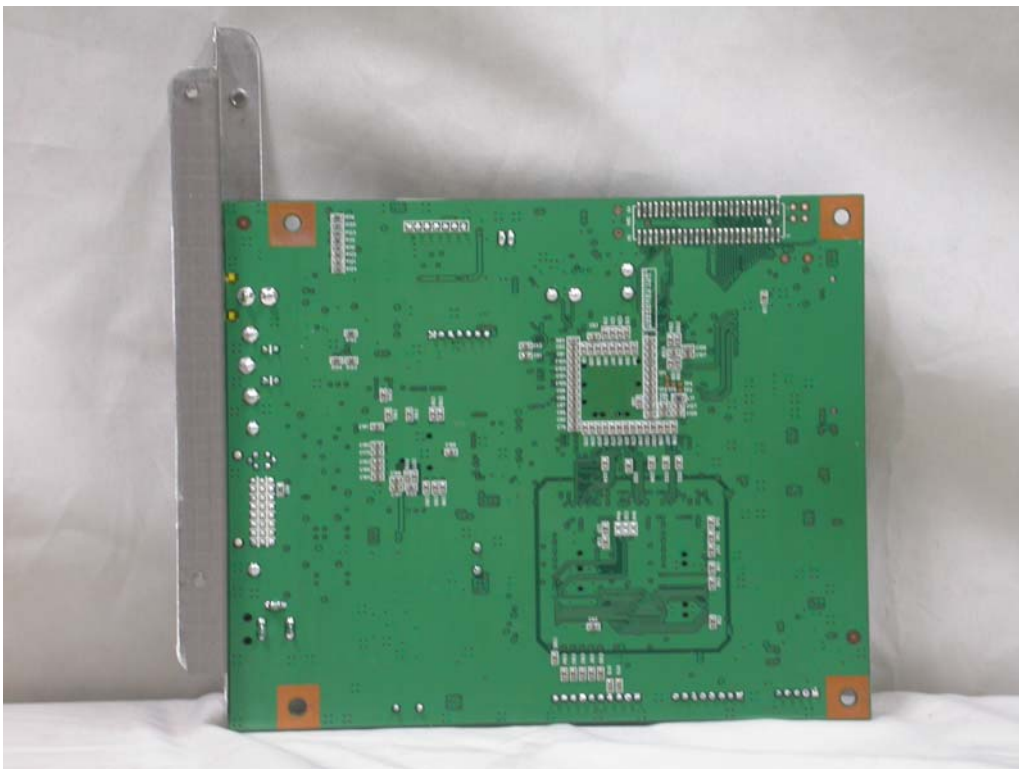
Internal Photos

1. Main Board

1.1. Front



1.2. Rear

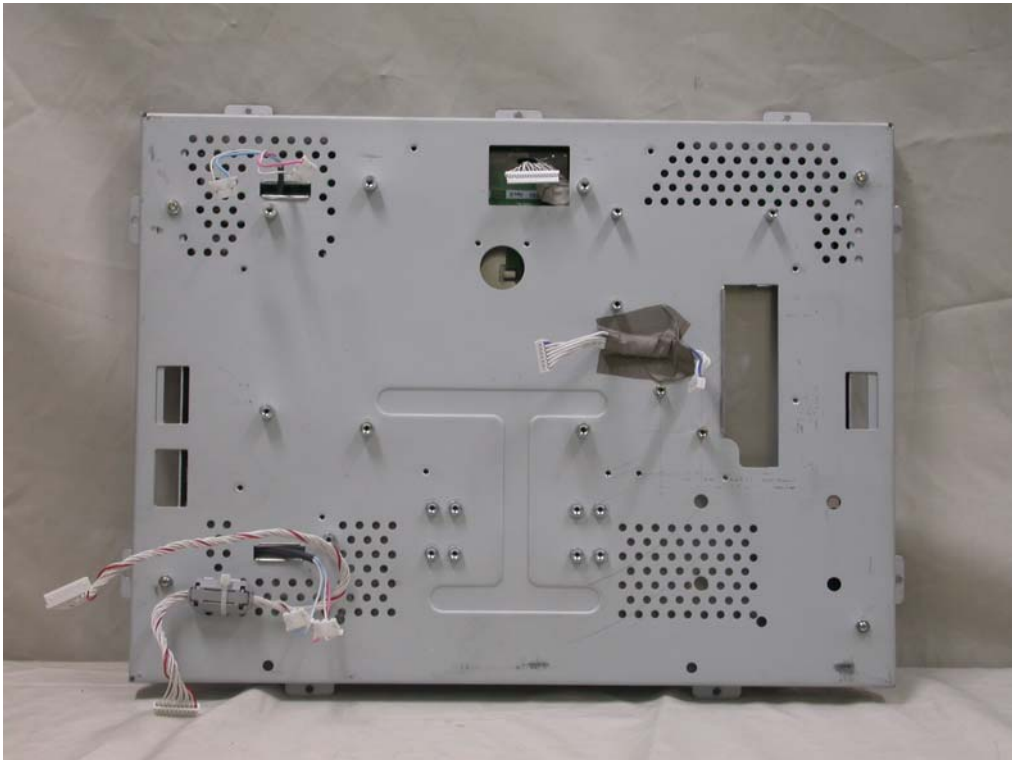


2. LCD

2.1. Front_NEC



2.2. Rear_NEC



2.3. Front_SHARP



2.4. Rear_SHARP

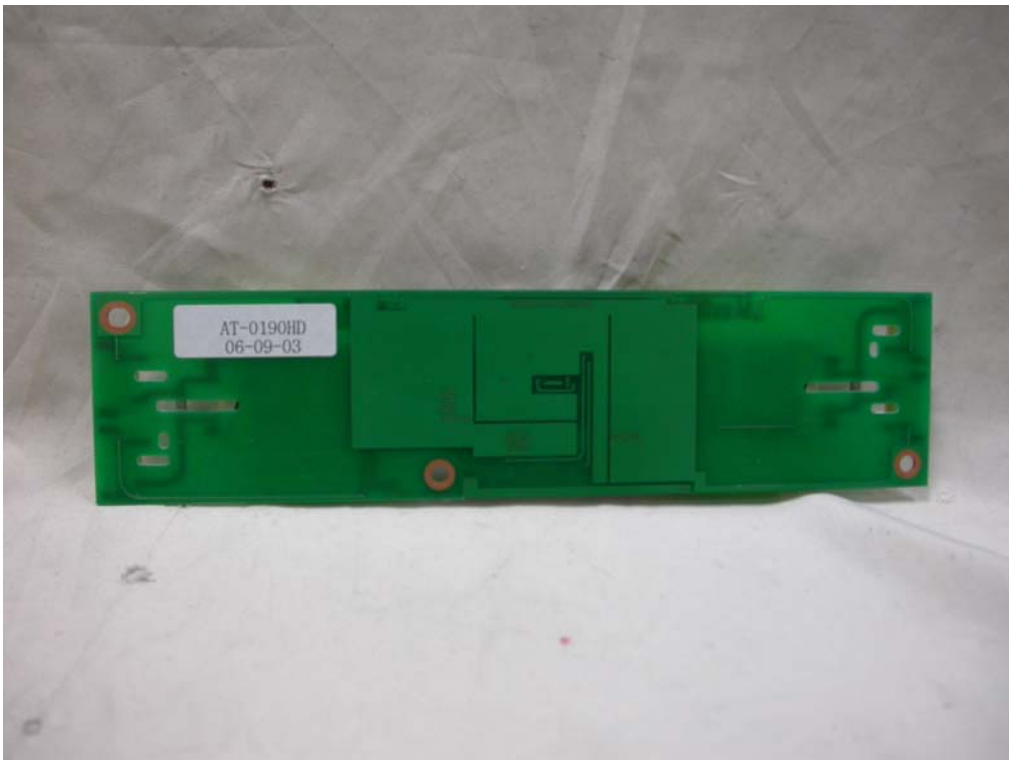


3. Inverter

3.1. Front



3.2. Rear



4. Control Board

4.1. Front

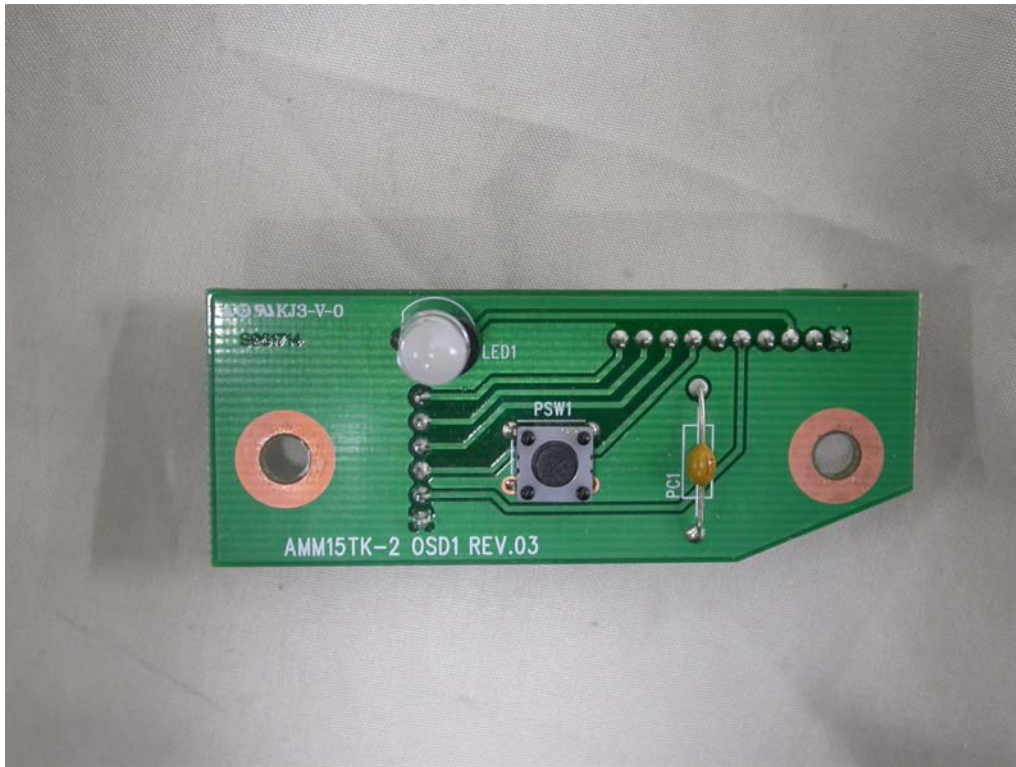


4.2. Rear

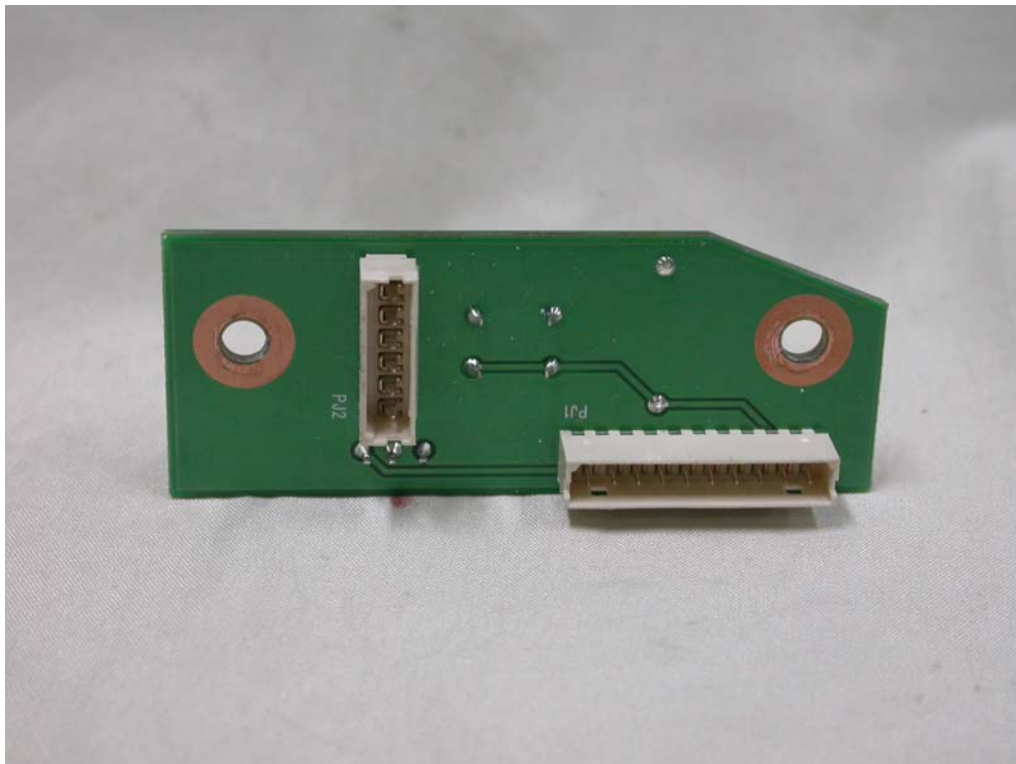


5. LED Board

5.1. Front



5.2. Rear



6. AC/DC Adapter

6.1. Front

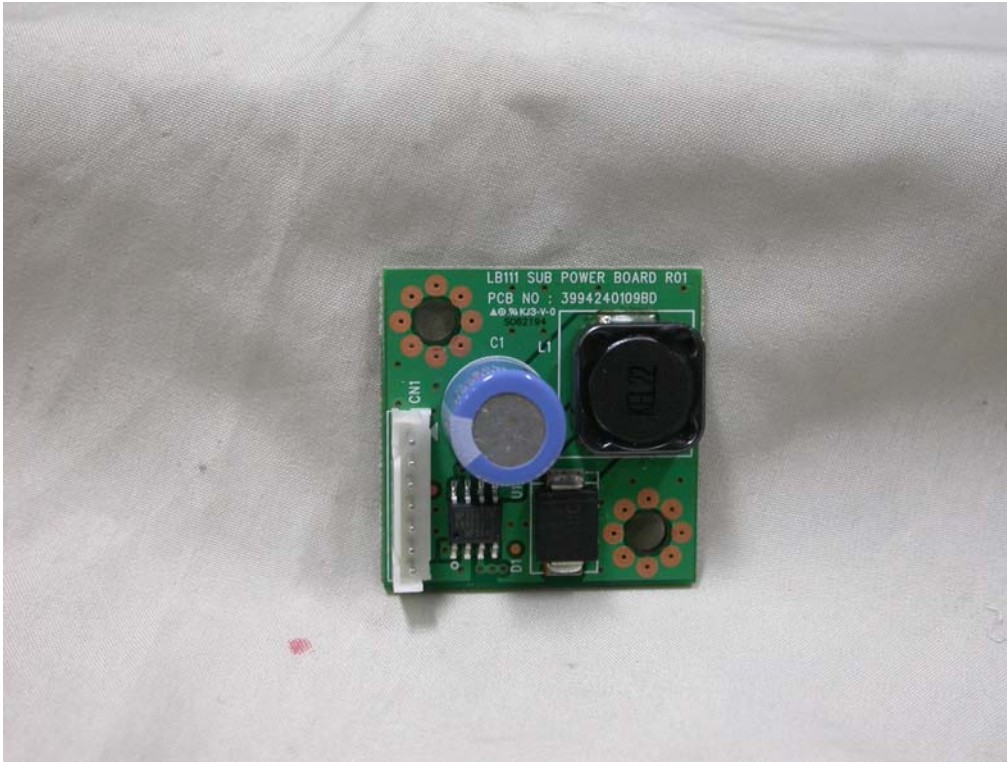


6.2. Rear



7. Sub Power Board

7.1. Rear



7.2. Rear

