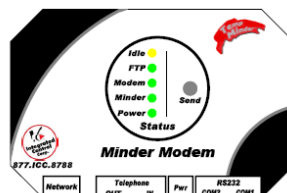




Temperature Minder Site Planning and Installation Manual



Temp Minder™

Site Planning Instructions



The Temp Minder™ system is easy to install and only takes about 1 hour. The standard temperature probes are designed to measure temperatures inside refrigerators and freezers. Follow the survey steps below to insure that your wireless Temp Minder will operate reliably for years to come.

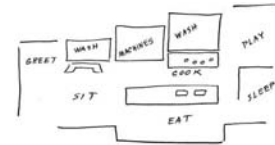


Survey – A quick survey of the facility allows you to plan where the temperature probes will be located. List all the coolers and freezers that you plan to monitor along with the alarm values.

For example:

Probe Survey Chart						
Probe #	Probe Name	High Alarm, °F	Low Alarm, °F	Time to Alarm	On Time	Off Time
1	Walk In Refrigerator.	45	33	0:10	12:00 AM	12:00 AM
2	Walk In Freezer	35	-40	0:20	12:00 AM	12:00 AM
3	Salad Bar	45	33	0:10	6:00 AM	10:00 PM
4	Pasta Bar	45	33	0:10	6:00 AM	10:00 PM
5	Ice Cream Freezer	32	-40	0:15	12:00 AM	12:00 AM

Site plan – Create a sketch of the facility to monitor and mark the placement of the probes. The receiver monitor display is usually located in or around the main office so when an alarm sounds the staff can hear it.



Using the Site Sketch and the Probe Survey Chart, measure the farthest probe distance from the receiver and locate one or more repeaters using the rules above.

For questions regarding placement of probes and repeaters, please fax the site survey and chart to Integrated Control 631-673-6756 with your company name and contact number or call Temp Minder™ support at 631-673-5100 for assistance.

Customer Survey Chart

Probe #	Probe Name	High Alarm, °F	Low Alarm, °F	Time to Alarm	On Time	Off Time
1						
2						
3						
4						
5						
6						
7						
8						
9						
10						
11						
12						

Kitchen Layout

INSTALLATION INSTRUCTIONS

1 – What's in the box?

The standard Temperature Minder box consists of the following parts:

- 1 – Temp Minder Display
- 1 – Minder Modem
- 5 – Temperature Probes
- 1 – 25' Cat5 Cable
- 1 – 8' Telephone cable
- 1 – AC-DC Power Supply

Prior to starting the install, verify that all parts are in the box

2 – Mounting the Display

The Temp Minder display should be mounted in a location that is accessible by the staff and can also be heard if there is a temperature alert

- On the back of the display unit, notice two mounting holes.
- Using the appropriate drill bit, drill two holes into the wall that the display will be mounted to.
- Screw the ICC provided wall screws into the wall.
- Mount the display unit accordingly.



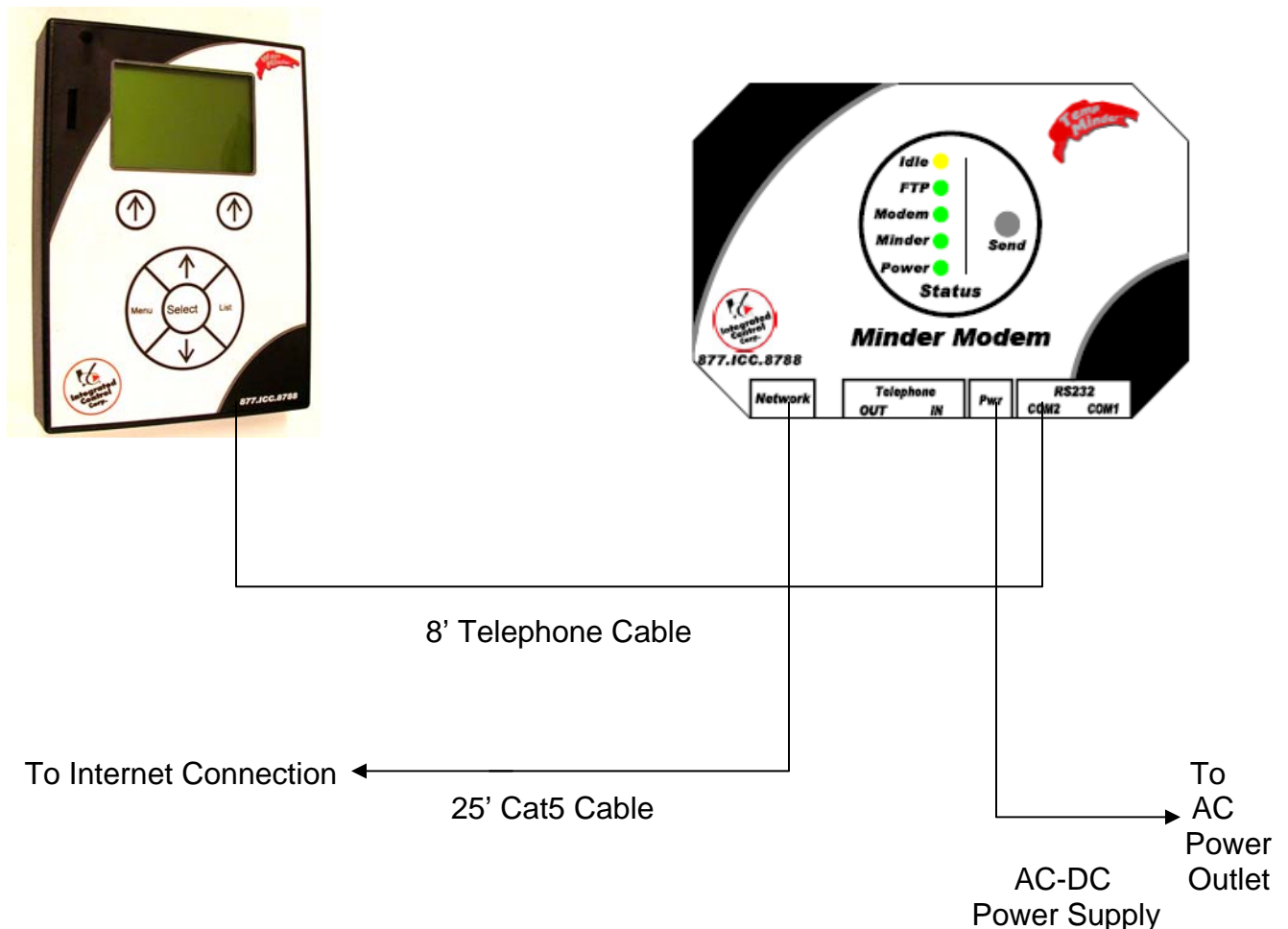
3 – Mounting the Minder Modem

The minder modem should be mounted within 7' of the Display unit, within 6' of an AC power outlet (an extension cord can be used if the outlet is more than 6' away) and within 25' of an internet connection.

- On the back of the minder modem unit, notice two mounting holes.
- Using the appropriate drill bit, drill two holes into the wall that the minder modem will be mounted to.
- Screw the ICC provided wall screws into the wall.
- Mount the minder modem accordingly.

4 – Running the cables

1. Run the cables using the wiring diagram below.



5 – Adding the probes

If ICC is provided with the Site plan prior to shipping, the temp minder will be shipped with probes already added. Skip to Section 6.

Prior to mounting the probes, they should be added to the temp minder first.

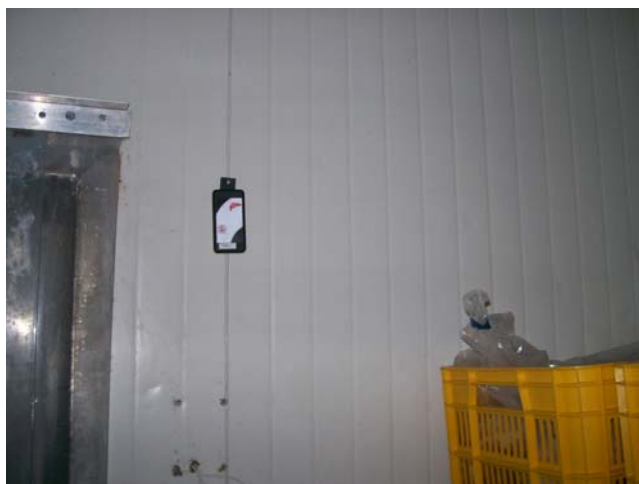
- Determine where each probe will be placed and label each probe accordingly.
- Check the system settings and verify that “Probe Search” is set to Auto.



- **Pull the tab away from the probe to turn on the probe.**
- When the tab is pulled away a “New Probe Found” screen will display on the temp minder.
- Press “Select” to add that probe.
- After adding the probe the temp minder will display the “Limit Settings” Screen.
- Edit the limits accordingly. (Refer to operation manual).

6 – Mounting the probes

- Find the best location to mount the probe in the area that you will be monitoring.
- Drill a hole.
- Mount the probe using the ICC provided mounting bracket and screw.
- If there is an available screw to use in the location you are monitoring use that screw.



7 – Determining Placement of Repeaters

- After mounting the probes go to the signal period screen located in the menu.
- ***Start with the probe closest to the receiver/display.***
- Notice on the screen the time in seconds counting up to the right of the probe name and temperature.
- If the seconds reset to 1 within 40 to 50 seconds no repeater is needed for that location.
- If the seconds do not reset to 1, install a repeater near the probe location.
- After installing the first repeater view the signal period for the next closest probe and repeat steps.



Changes Or Modifications Not Expressly Approved By The Party Responsible For Compliance Could Void The User's Authority To Operate The Equipment.