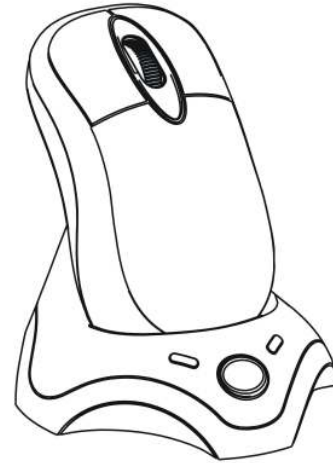


Wireless Optical Wheel Mouse Rechargeable

USE'S GUIDE



CAUTION: To use this device properly, please read the user's guide before installation.

FCC Compliance and Advisory Statement

Federal Communications Commission (FCC) Notice

This device complies with Part 15 of the FCC rules. Operation is subject to the following two conditions:

- (1) This device may not cause harmful interference, and
- (2) This device must accept any interference received, including interference that may cause undesired operation.

This equipment has been tested and found to comply with the limits of a Class B digital device, pursuant to Part 15 of the FCC Rules. These limits are designed to provide reasonable protection against harmful interference in a residential installation. This equipment generates, uses and can radiate radio frequency energy and, if not installed and used in accordance with the instructions, may cause harmful interference to radio communications. However, there is no guarantee that interference will not occur in particular installations. If this equipment does cause harmful interference to radio or television reception, which can be determined by turning the equipment off and on, the user is encouraged to try to correct the interference by one or more of the following measures:

1. Reorient/Relocate the receiving antenna.
2. Increase the separation between the equipment and receiver.
3. Connect the equipment into an outlet on a circuit different from that the receiver is connected.
4. Consult the dealer or an experienced radio/ TV technician for help.

CAUTION:

Change or modifications not expressly approved by the manufacturer responsible for compliance could void the user's authority to operate the equipment.

Make sure your mouse port has the proper configuration. Refer to your computer documentation for the correct port configuration.

You may have other system devices (e.g. a LAN card) that conflict with your mouse. Check the IRQ/address setting of these devices for conflicts, and change the setting as required.

The Screen Cursors Does Not Move Properly

Change the position of your radio receiver, because it may be too far from the mouse or the computer monitor or a large metal object may be interfering with the receiver's radio reception. Try moving the stand and/or mouse to improve reception.

Charge the battery

you may also need to change the channel for the mouse. Press the Connect button on the receiver, then press the Connect button on the mouse.

If your tabletop surface is red in color or is highly reflective like a mirror, your tabletop surface may be interfering with the optical sensor of the mouse. Try using a mouse pad or use the mouse on a different tabletop surface.

NOTE:

The manufacturer is not responsible for any radio or TV interference caused by unauthorized modifications to this equipment. Such modifications could void the user authority to operate the equipment.

Step2:double click the 3 keyMagic.exe
Step3:follow the on screen instruction to finish the setup

A small mouse icon will appear at the right side of the windows status bar.

How to program a button

Step1:double click the mouse icon,a mouse properties window will open
Step2:select configure mouse button
Step3:select the button you want to program
Step4:select the instruction you want the button to be
Step5:click ok to finish button programming

How to configure mouse wheel

Step1:double click the mouse icon,a mouse properties window will open
Step2:select configure mouse wheel
Step3:you can select the scroll speed or set the wheel as volume controller
Step4:click ok to finish wheel setting

Troubleshooting

Mouse does not work upon installation

Try one or more of the following:

For optimal performance ,place the receiver at lease eight inches or 20 centimeters away from the mouse or other electrical devices,such as the computer,the computer monitor,or external drive.

Make sure you have installed the batteries correctly.

If you are working on a metallic surface,try using a mouse pad turning the receiver on its side for better reception.

Press the CONNECT button on the receiver,then press the Connect button on themouse.

Mouse Not Detected

When using the mouse ,it may not be detected by the computer,To remedy this problem,try the following:

Make sure the receiver cable is plugged into the right mouse port.

Welcome

Your mouse uses a newly developed optical sensor that replaces the traditional mouse ball and uses radio technology to communicate with your computer.The optical sensor accurately scans the surface of your desktop many times per second for smooth and fast cursor tracking on your computer screen.And because there are no moving parts,There is nothing to clean or adjust. The digital radio technology does not require line-of-sight placement and usage. Your mouse come with a mouse stand which acts as a receiver and a charger, you can place your mouse on the stand to charge the batteries installed in the mouse

Getting Ready

Please check the following contents of your Cordless Optical Wheel Mouse.

- 1 x cordless Optical Wheel Mouse
- 1 x Mouse Stand
- 2 x AA NIMH Rechargeable Batteries
- 1 x Floppy Disk Driver for programmable Buttons

Installing the Batteries

Step 1.Open the battery cover
Step 2.Insert the batteries as shown inside the battery compartment.
Step 3.Replace the cover.



Connecting the Receiver

The Cordless Mouse uses digital radio technology. Communication between the mouse and your computer is achieved with great reliability using radio waves.The cordless mouse do not have bulky cables that can ger in the way, the mouse emit radio frequencies as a means of communicating,which is picked up by the receiver and passed onto your computer.

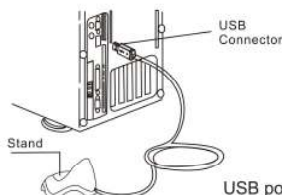
The receiver is connected to your computer via a 1.2 meter USB cable.And it plugs into your computer's USB Port.



USB port

For USB port installation

Windows 98 or higher or Macintosh OS 8.6 or higher is required for USB port installation.Connect the receiver cable to the USB port on the computer. For Windows,you may be prompted to insert the Windows software CD.Insert this software CD into the computer's CD-ROM driver when asked to do so. Then following the on-screen instructions.

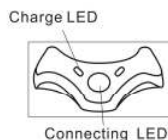


USB port installation

Indicators on Receiver

There is two indicator on the receiver

- 1.Connect:the indicator will flash when you press the connect button.when the receiver successful change the IDs,the indicator will flash several fast.
- 2.Charging:the indicator will light on when charging the battery in mouse the indicator will turn off when the battery is full.



Setting up your Cordless mouse

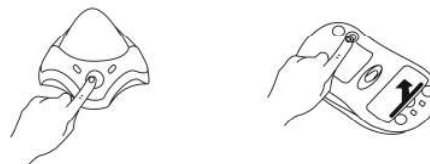
After you have installed the receiver,you are ready to place the mouse on your desktop.Because the mouse use cordless radio technology,palacement of you mouse is not critical,giving you considerable freedom of movement and a more enjoyable computing experience.

For optical performance,place the stand at least eight inches or 20 centimeters away from the mouse or other electrical devices,such as the computer,the computer monitor,or external drive.

Changing the Channel or security IDS

Your mouse come with 2 channel and multi security ids,which can let your receiver only listen to one mouse.Do following step to change channel and security Ids when you get undesired interference from annother device used nearby.

- 1.Press the CONNECT button on the Receiver.connect indicator will flash.
- 2.Press the CONNECT button on the bottom of the Mouse ONCE.



NOTE:

- 1.The indicating LED will light steadily when the linkage is completed.
- 2.you need to re-connect the mouse and the receiver when you take the battery out of the mouse.
- 3.Some mouse may have only one channel due to various product versions.

Charge the Mouse

Your mouse uses two AAA size Ni-MH rechargeable batteries.Before you use the wireless mouse,you need to place the mouse on the stand to charge the batteries for 12 hours.This is very important to battery life.Please make sure the charege indicator is light ON when you charge the mouse.

When you feel your wireless mouse is not working smoothly,that means that the batteries need to be rechaged.Please put the mouse on the stand to charge. Normally it will take 6 hour to get the battery fully charged.Please make sure the charge indicator is light ON when you charge the mouse.

Installing the Driver

Your mouse come with a programmable buttons driver,in which you can assignn the button functions,set the scroll speed,etc.

Step1:Insert the floppy disk or CD-ROM to your computer