

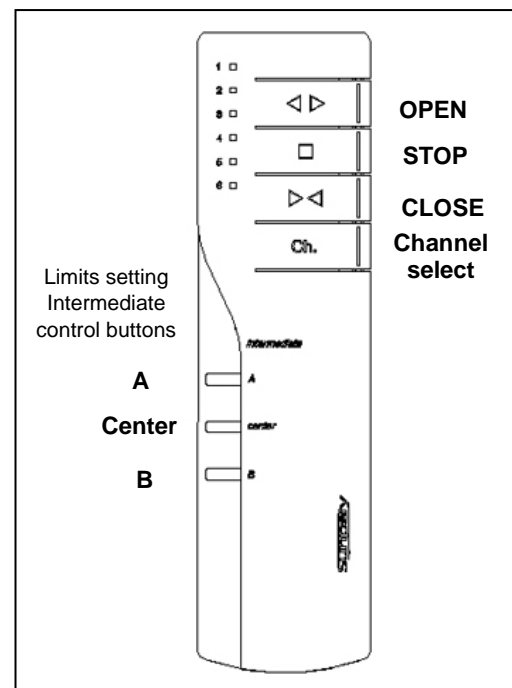
Instruction Manual

Remote control C222

Sunpery remote C222 is a handy tool to be used for operating Sunpery window covering automation systems. It works in both drapery and roller systems and controls up to 6 channels drapery systems or 6 channels of roller systems. Multiple motors can be grouped and controlled by each channel.

1. Commissioning

In first time of using the remote, the motor needs to recognize the remote. Press channel selecting button, one of channel indicating digits will illuminate, keep press the channel button until the desired channel digit turns up. The motor needs to be powered off for 1 minute, Then power on again. Within 90 seconds after power on, press and hold OPEN and CLOSE buttons simultaneously. The selected channel number will turn up with slow flash. The motor react with a movement to indicate motor receiving the signal from the remote and confirm communication in between has been established. Test run by press OPEN or CLOSE button.



2. Changing travel Direction

The buttons on the remote control should provide indication for the direction of movements of an automation system. If they are not, for example, when press OPEN button the blinds goes down, you may need to change the direction.

To change direction, motor is to be power-off for 1 minute, then power on again. Press and hold button A and button B simultaneously, the digit flash slowly, motor reacts with jogs to confirm change made. This can only be done within 2 minutes of the motor gets connected to power. Test run by press OPEN or CLOSE button.

3. Limit setting

No limit setting is required for Sunpery standard DC drapery motors, only Sunpery encoded motors, such as electronic motors for roller blinds and AC drapery motors require limit settings. To enter into limit setting mode, press and hold button A and button B buttons simultaneously during normal operating mode which is after initial 2 minutes of power up. The channel digit flashes slowly, and motor react with jogs. Press OPEN or CLOSE button to move the blinds to the position where you wish to set the limit. Press button A, and motor jogs to confirm the first limit has been set. Press CLOSE or OPEN button to move the blinds to the other position where you wish to set the other limit. Press button B, and motor jogs to confirm the other limit has been set and out of limit setting mode.

4. Intermediate stop setting

No intermediate stop setting is required for Sunpery standard DC drapery motors, only Sunpery encoded motors, such as electronic motors for roller blinds and AC drapery motors require have intermediate stop feature. There are up to three intermediate stops can be set with Sunpery encode motors. If only end limits were set, the motor will automatically with intermediate stops at 25%, 50% and 75% by its factory settings.

Setting intermediate stops needs to be down during the time of setting end limits. As in step 3, get into limit setting mode by press and hold button A and button B simultaneously. After reaction from the motor, move the blinds by press OPEN or CLOSE button to where you want to set first limit. Press button A, and motor reacts to confirm the first limit has set. Then move the blinds to the position where you want to set the first intermediate stop, press button A and button Center simultaneously. Motor reacts to confirm the first intermediate stop has been set. Further move the blinds to the position where you want for the central intermediate stop, press button Center and motor reacts to confirm the center intermediate stop setting. Further moving the blinds to where you want for the next intermediate stop, press button B and button Center simultaneously. Motor reacts to confirm the last intermediate stop has been set. Further move the blinds to where the end limit should be, press button B, motor reacts by jogs to confirm the last limit has been set and out of limit setting mode.

5. Operating

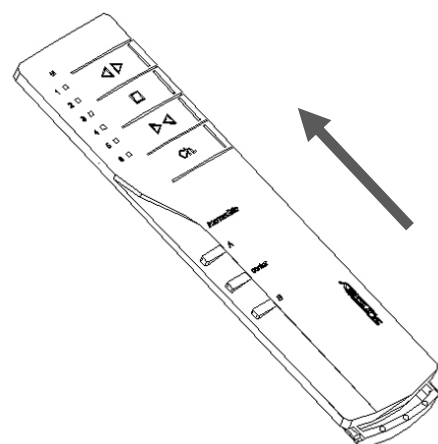
To operate, simply press OPEN or CLOSE for driving the window coverings, the system will be running until meets its end of travel span. If it is a encode motor, press button A will drive the system to the first intermediate stop. Press button Center will move the system to the center intermediate stop. Press button B will move it to the third intermediate stop.

6. Delete channel settings at the motor

Select the channel that commending the motor to which you want to cancel the channel setting. Press and hold OPEN and STOP buttons, motor react with jogs. The particular channel on the remote will deleted from the motor, therefore no long operate the motor. If press and hold STOP and CLOSE buttons, motor reacts with jogs, all the channel settings on the motor will be deleted if the motor has been programmed with more than one remote or more than one channel on the same remote. To test effectiveness of the deleting, simply press any of the action buttons, OPEN, CLOSE, intermediate buttons . Motor should not move.

7. Replacing battery

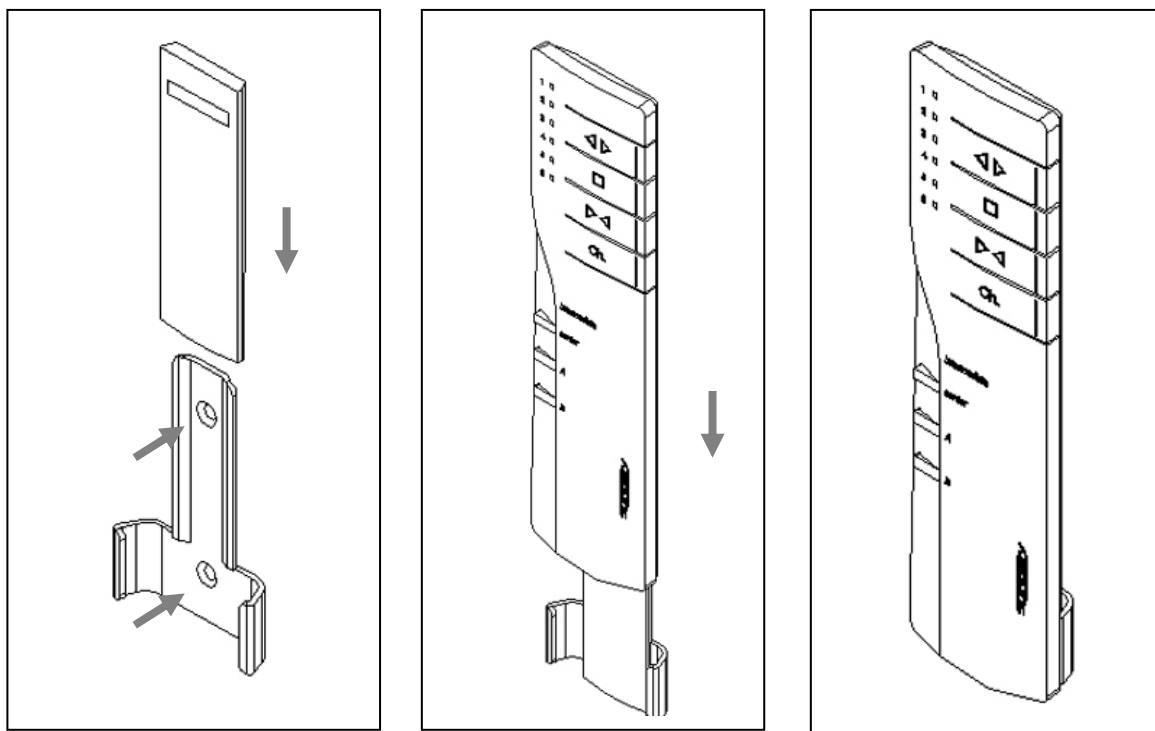
The remote is powered by two Li-ion button batteries, Model number: CR24300. The battery lasts for over two years under normal operating condition. When digits “1” and “6” turn up at the same time, it means the batteries are flat, time to replace. The battery is a standard type. You can easily find it in shops. Open the remote case by pushing top lid to up direction. After top lid get moved in about 5mm, it can be removed and the battery can be seen. Simply replace the old battery with new ones, then



put the top lid back.

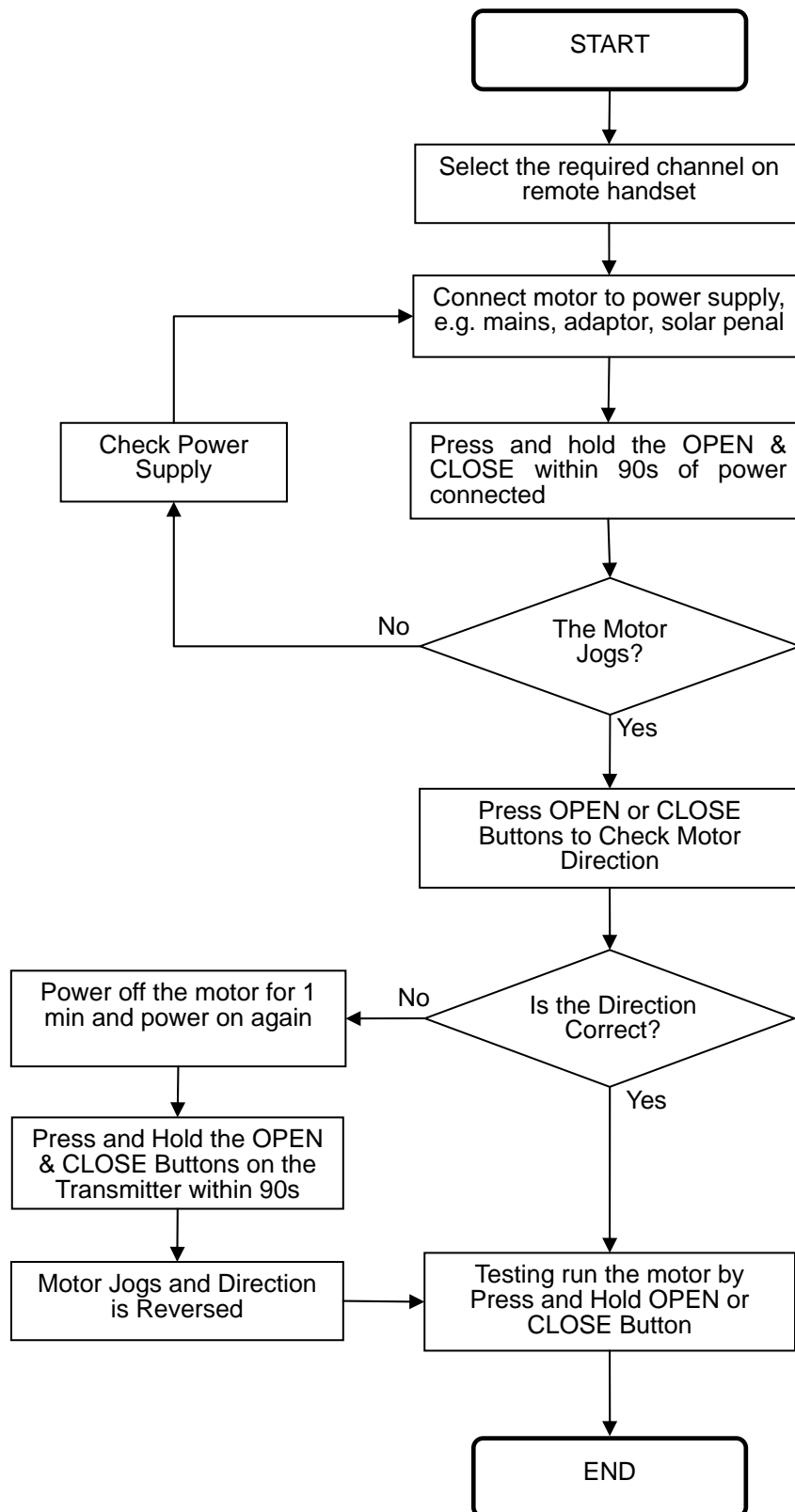
8. Wall bracket

A wall bracket is specially designed for when you need to place the remote on the wall. Fix the metal part to the wall by two head-sink screws. Slide the plastic part on to the metal part. Place the handset onto the wall bracket.



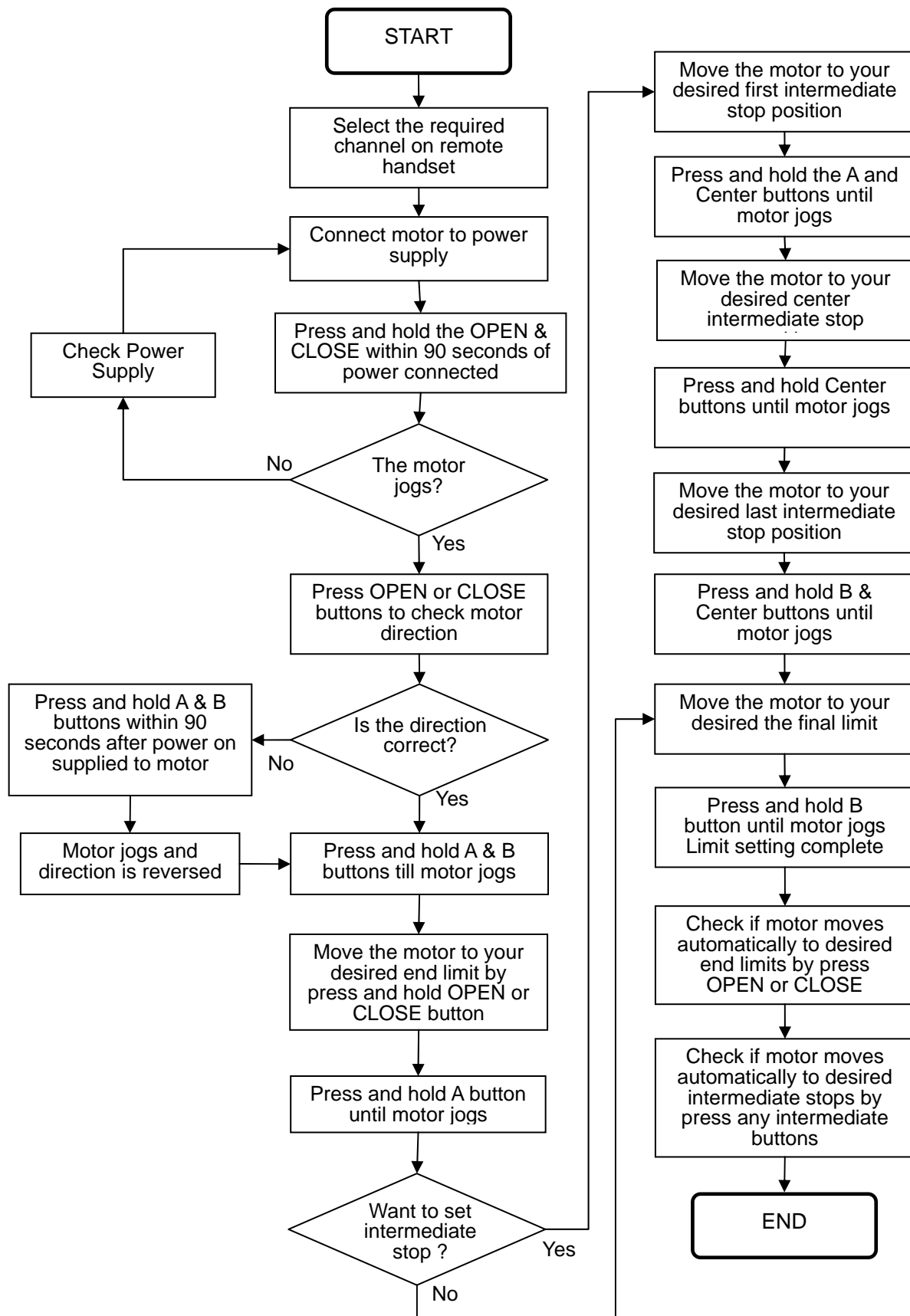
The flowchart -----programming Sunpery standard DC drapery system from the remote

Warning: In order to prevent damage, never start programming with the lead carrier at very end of rail.



The flowchart -----programming a Sunpery encode motor from the remote

Warning: In order to prevent damage, never start programming with the system at its extreme end..



FCC ID: VXC-C222-9120

This device complies with Part 15 of the FCC Rules. Operation is subject to the following two conditions: (1) this device may not cause harmful interference, and (2) this device must accept any interference received, including interference that may cause undesired operation.

changes or modifications not expressly approved by the party responsible for compliance could void the user's authority to operate the equipment.

NOTE: This equipment has been tested and found to comply with the limits for a Class B digital device, pursuant to Part 15 of the FCC Rules. These limits are designed to provide reasonable protection against harmful interference in a residential installation. This equipment generates, uses and can radiate radio frequency energy and, if not installed and used in accordance with the instructions, may cause harmful interference to radio communications. However, there is no guarantee that interference will not occur in a particular installation. If this equipment does cause harmful interference to radio or television reception, which can be determined by turning the equipment off and on, the user is encouraged to try to correct the interference by one or more of the following measures:

- Reorient or relocate the receiving antenna.
- Increase the separation between the equipment and receiver.
- Connect the equipment into an outlet on a circuit different from that to which the receiver is connected.
- Consult the dealer or an experienced radio/TV technician for help.