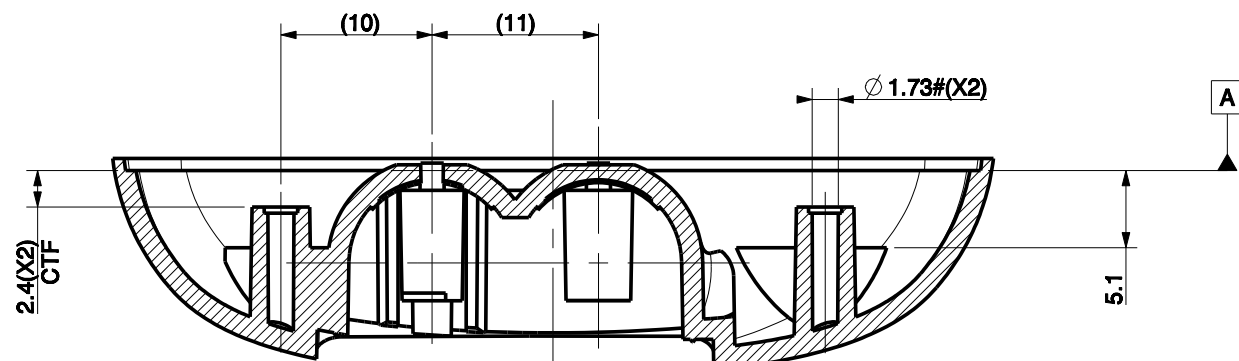
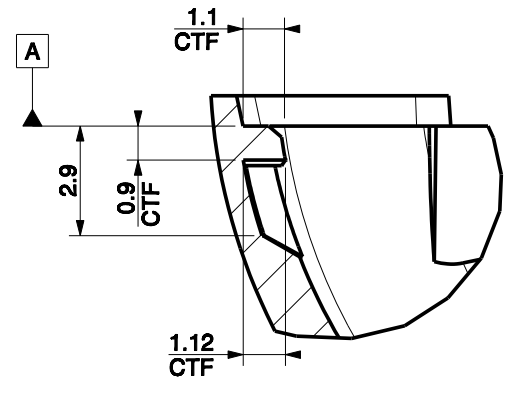
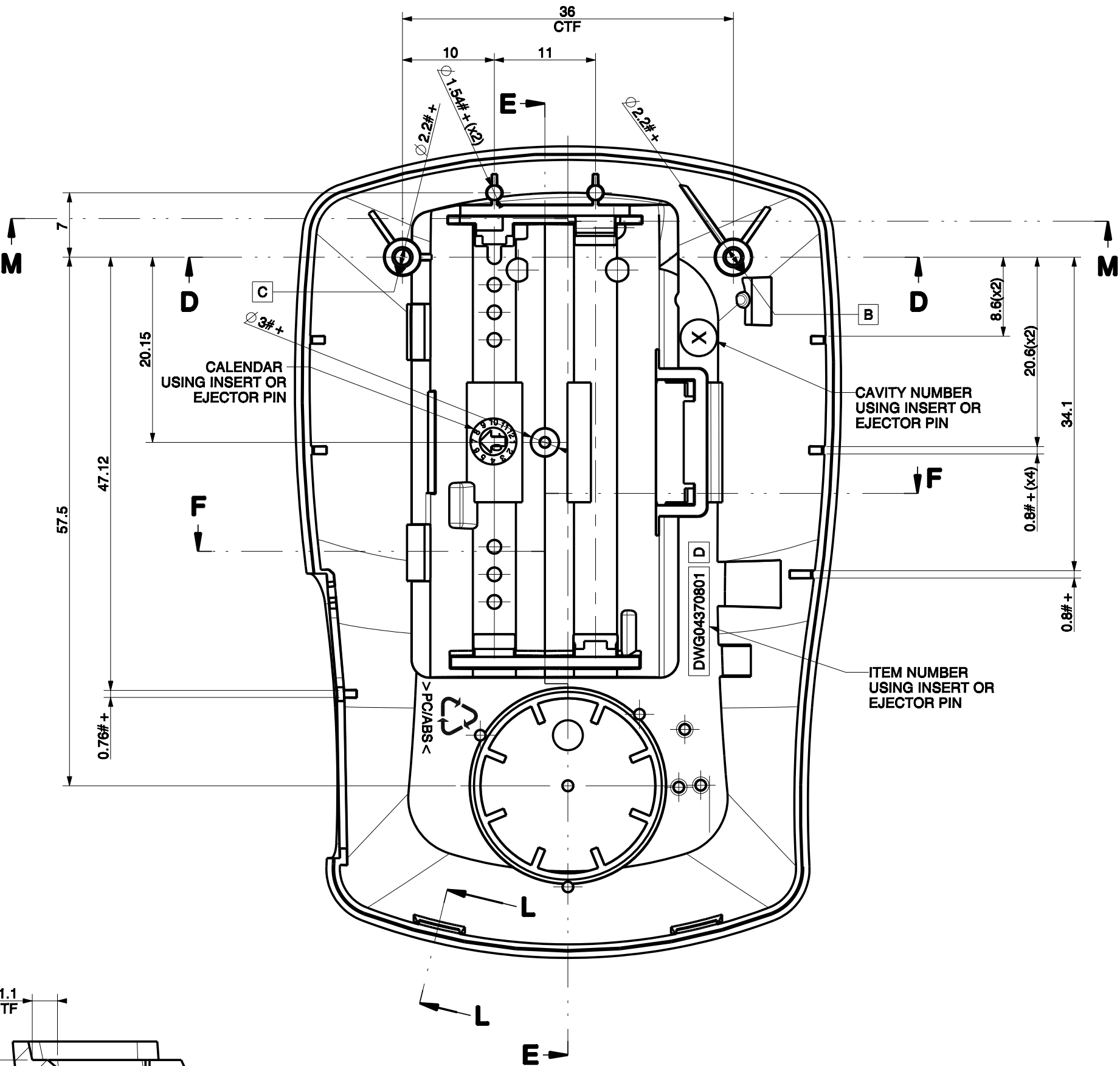


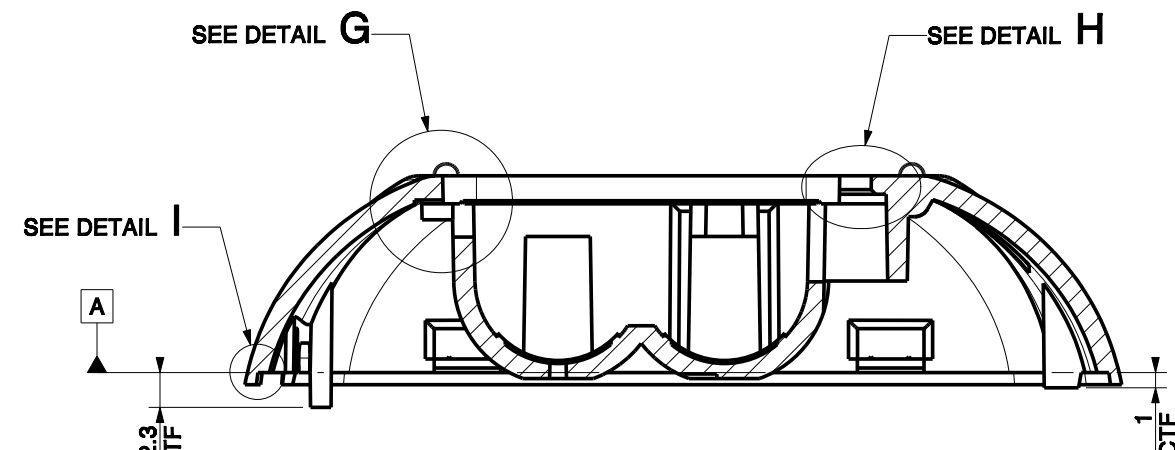
SECTION M-M



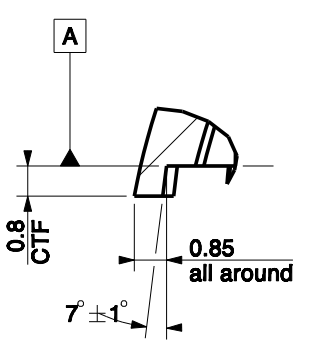
SECTION D-D



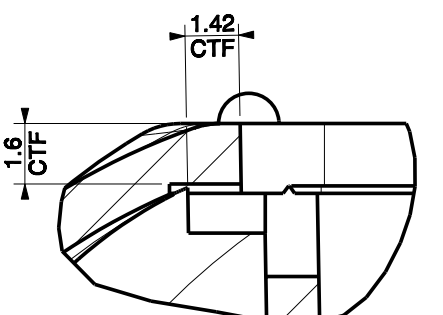
SECTION L-L
SCALE 5:1



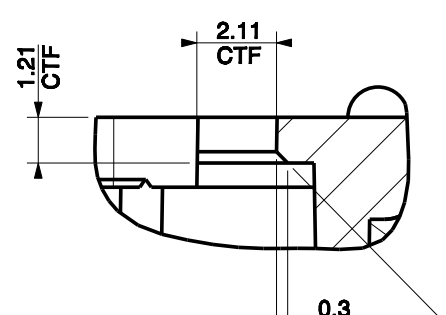
SECTION F-F



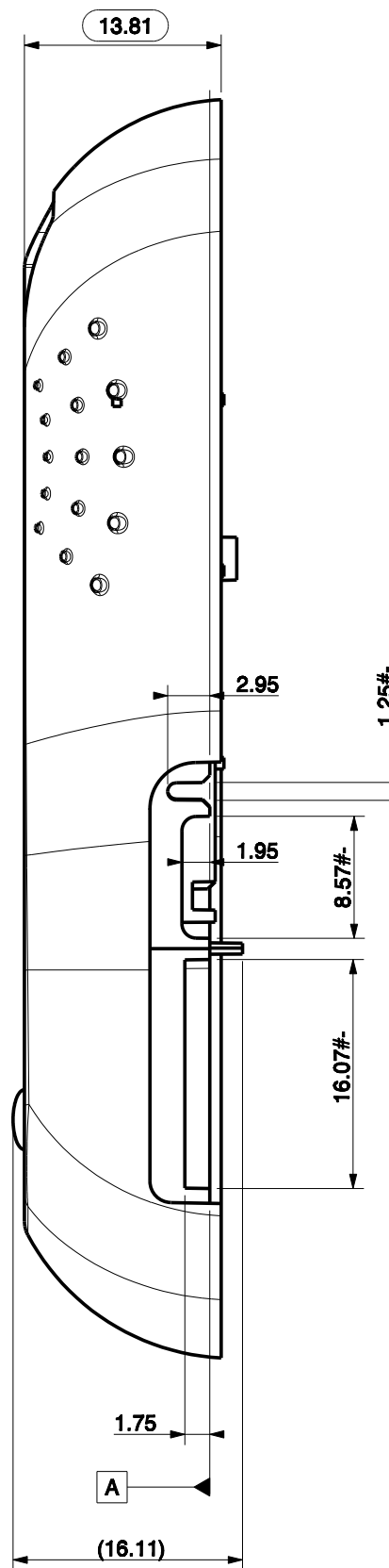
DETAIL I
SCALE 5:1



DETAIL G
SCALE 5:1

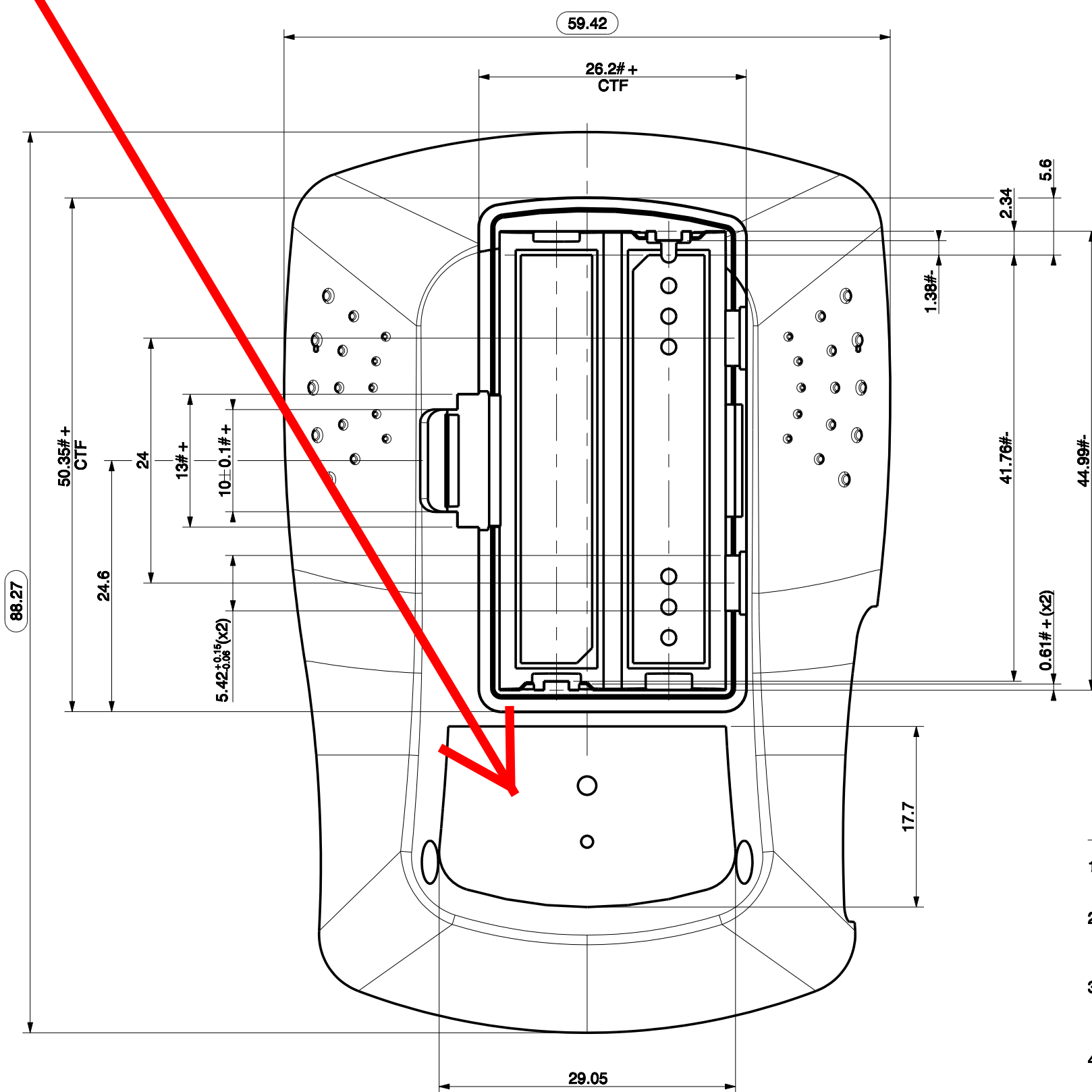


DETAIL H
SCALE 5:1



SECTION E-E

FCC Label here





NOTES (UNLESS OTHERWISE SPECIFIED):

- DRAWINGS FOR INSPECTION PURPOSES ONLY. ACTUAL PART SHALL CONFORM TO 3D ELECTRONIC DATABASE. DO NOT SCALE DRAWING.
- MATERIAL COLOR: WL1289 Pantone Cool Gray 4C. PAINTED: YES, PAINT TYPE: SEE PAINT DRAWING. NO REGRIND PERMITTED.
- NOMINAL WALL THICKNESS: 1.4 MM. PART VOLUME: 10.78 cm³. PART MASS: 11.30 gram.
- MOLD FINISH ON ALL EXTERNAL (APPEARANCE) SURFACES SPI-A2, UNLESS OTHERWISE SPECIFIED.
- REFERENCE LIFESCAN SPECIFICATION FOR PLASTIC COMPONENT PART COSMETICS REQUIREMENTS No. 1039643, SURFACE CLASS: B FOR INSPECTION AND ACCEPTANCE CRITERIA.
- DRAFT PER 3D PART MODEL UNLESS OTHERWISE SPECIFIED IN DRAWING: #+ DIMENSION INCREASES WITH DRAFT, #- DIMENSION DECREASES WITH DRAFT.
- MOLD: PARTING LINE MISMATCH AND/OR FLASH NOT TO EXCEED 0.1 MM. MOLD DESIGN TO MINIMIZE EJECTOR PIN MARKS, WELD LINES, AND GATE BLUSH. MOLD DESIGN TO BE APPROVED PRIOR TO CONSTRUCTION.
- TOLERANCES ACCORDING TO TABLE NPT 58-000 (DIN 16901) CLASS 4 FINE. FORM: STRAIGHT EDGES TO HAVE STRAIGHTNESS TOLERANCE OF ± 0.1 PER MM.
- () INDICATES REFERENCE DIMENSIONS, CTF INDICATES CRITICAL TO FIT/FUNCTION DIMENSIONS, □ INDICATES QUALITY CONTROL DIMENSIONS, INDICATES BASIC DIMENSIONS.
- ITEM NUMBER, ITEM REVISION, RECYCLE SYMBOL WITH MATERIAL TYPE, CALENDAR AND CAVITY NUMBER X WITH INTERCHANGEABLE INSERT: TO BE RECESSED, 0.2 MM FROM SURFACE.
- SHARP CORNERS WHERE INDICATED.
- USE OF MOLD RELEASE NOT PERMITTED.
- WITNESS LINE APPROXIMATELY WHERE INDICATED.
- ALL INJECTION POINTS AND EXTRACTORS TO BE IN AGREEMENT WITH THE PART DESIGNER.
- LAST SHEET OF DRAWING IS REVISION SHEET.


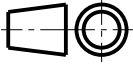
| TOLERANCES ACC. TO NPT 58-000 (DIN 16901) | | | |
|---|------|------|-------|
| CLASS 4 - FINE, IN MM | | | |
| NOMINAL DIM | OVER | TO | TOL ± |
| 0 | 1 | 0.04 | |
| 1 | 3 | 0.05 | |
| 3 | 6 | 0.06 | |
| 6 | 10 | 0.07 | |
| 10 | 15 | 0.08 | |
| 15 | 22 | 0.09 | |
| 22 | 30 | 0.10 | |
| 30 | 40 | 0.11 | |
| 40 | 53 | 0.13 | |
| 53 | 70 | 0.15 | |
| 70 | 90 | 0.17 | |

| DRAFT MEASUREMENT | | | |
|-------------------|----|----|----|
| #- | #+ | #- | #+ |
| 6# | 3# | 6# | 3# |
| 6# | 3# | 6# | 3# |

| | | | | | | | | | |
|---|--|--------------|---|------|-------|--------|-------|------------|--|
| ALL INFORMATION IS AVAILABLE IN PRO/ENGINEER AND CAN BE SUPPLIED AS DXF / DWG / PDF OR IGS / STP DATA | | | | | | | | | |
|  | | TYPE |  | UNIT | SCALE | FORMAT | SHEET | REVISION | |
| Cover, Bottom, PNG | | PART DRAWING | EUROPEAN | mm | 2:1 | A1 | 1/2 | A | |
| ITEM NAME | | | | | | | | CREATED BY | |
| ITEM NUMBER | | | | | | | | CREATED ON | |
| MATERIAL | | | | | | | | TREATMENT | |
| PC/ABS - Bayer Bayblend T85 | | | | | | | | N.A. | |

This drawing is the property and copyright of LifeScan Scotland Ltd. and must not be passed on, copied or used for any other purpose without their written consent.

This drawing is the property and copyright of LifeScan Scotland Ltd. and must not be passed on, copied or used for any other purpose without their written consent.

| | | | | | |
|--|-----|-------------------------|--|---------------|-------------------------|
| | 1 | 2 | 3 | 4 | 5 |
| A | | | | | A |
| | | | | | |
| | | | | | |
| B | | | | | B |
| | | | | | |
| | | | | | |
| | | | | | |
| C | | | | | C |
| | | | | | |
| | | | | | |
| | | | | | |
| D | | | | | D |
| | | | | | |
| | | | | | |
| | | | | | |
| E | | | | | E |
| | | | | | |
| | | | | | |
| F | A | - | Updated drawing to Production Release and importing to Enable. | 28-Apr-10 | M.Volpe |
| | REV | POSITION | DESCRIPTION | DATE | ORIGINATOR |
| ITEM REVISION SHEET | | | | | |
| ALL INFORMATION IS AVAILABLE IN PRO/ENGINEER AND CAN BE SUPPLIED AS DXF / DWG / PDF OR IGS / STP DATA | | | | | |
|  | | TYPE PART DRAWING |  EUROPEAN | UNIT mm | SCALE N.A. |
| ITEM NAME Cover, Bottom, PNG | | FORMAT A4 | SHEET 2/2 | REVISION A | |
| ITEM NUMBER DWG 04370801 | | CREATED BY M.Volpe | | | CREATED ON 28-Apr-10 |
| Drawing Print Name: 04370801 Revision: A Effectivity Date: May 17 2010 Next Review Date: NA Status: Current State: Released | | | | | |

Statement of Use: Verify status before each use

Approver List

Approver: Roy Rojas (Document Services) Approval Date: 5/13/2010 8:27:11 PM
Approver: Paul Fisher (Quality) Approval Date: 5/17/2010 7:49:37 AM
Approver: Jesse Gudino (Operations) Approval Date: 5/14/2010 5:46:19 PM
Approver: Gina Young (Independent Reviewer) Approval Date: 5/17/2010 6:27:11 AM
Approver: Roy Rojas (Document Services) Approval Date: 5/17/2010 1:28:00 PM

Sites Impacted: Inverness, Milpitas