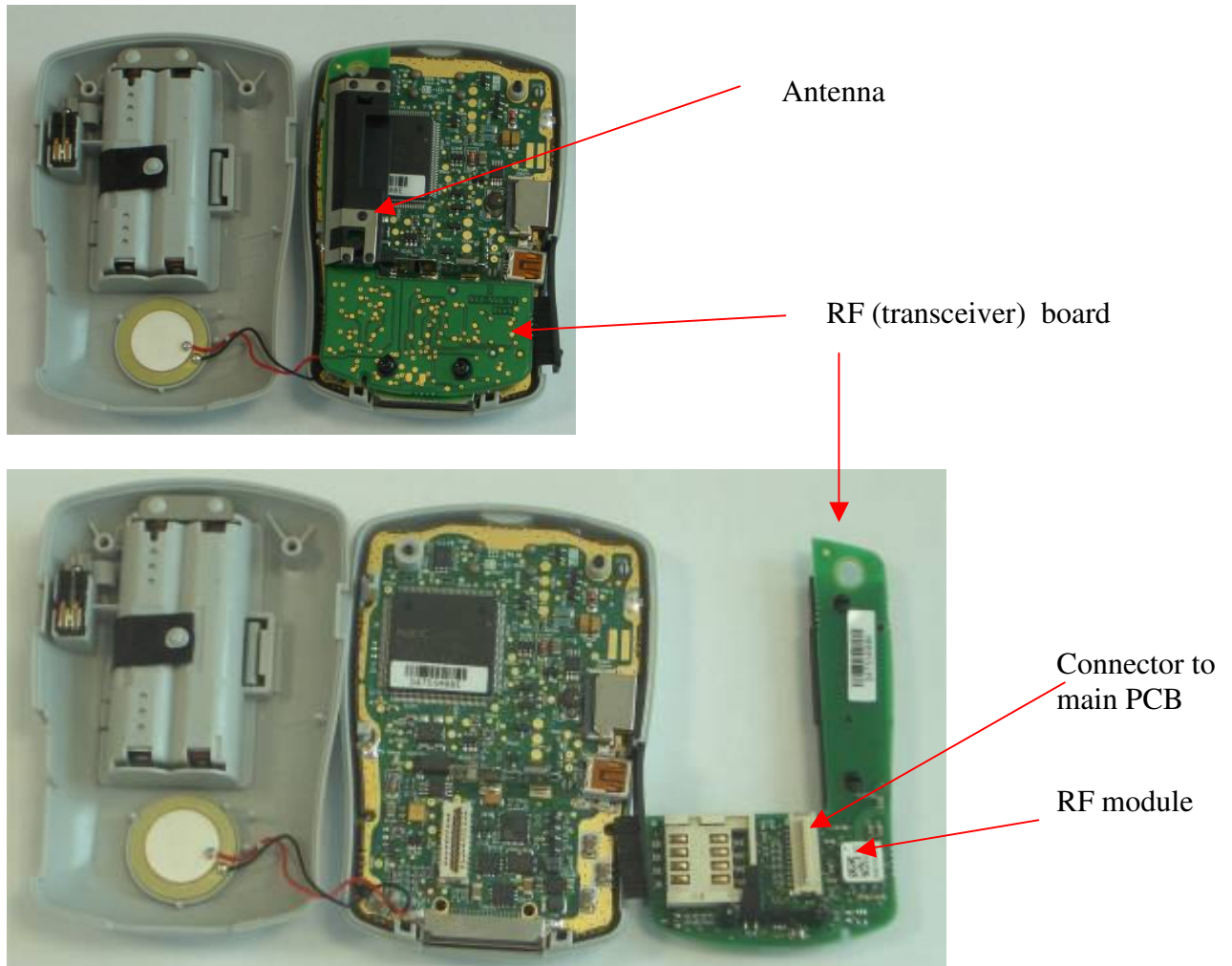
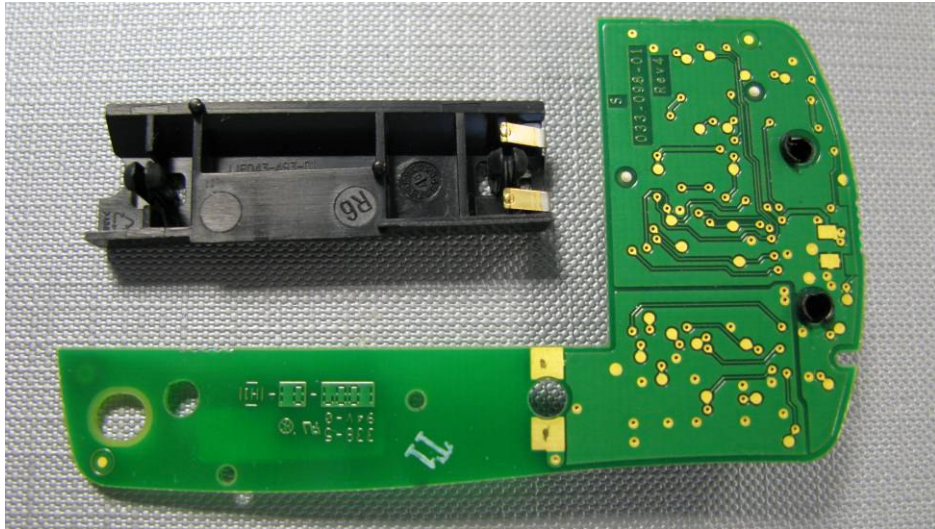


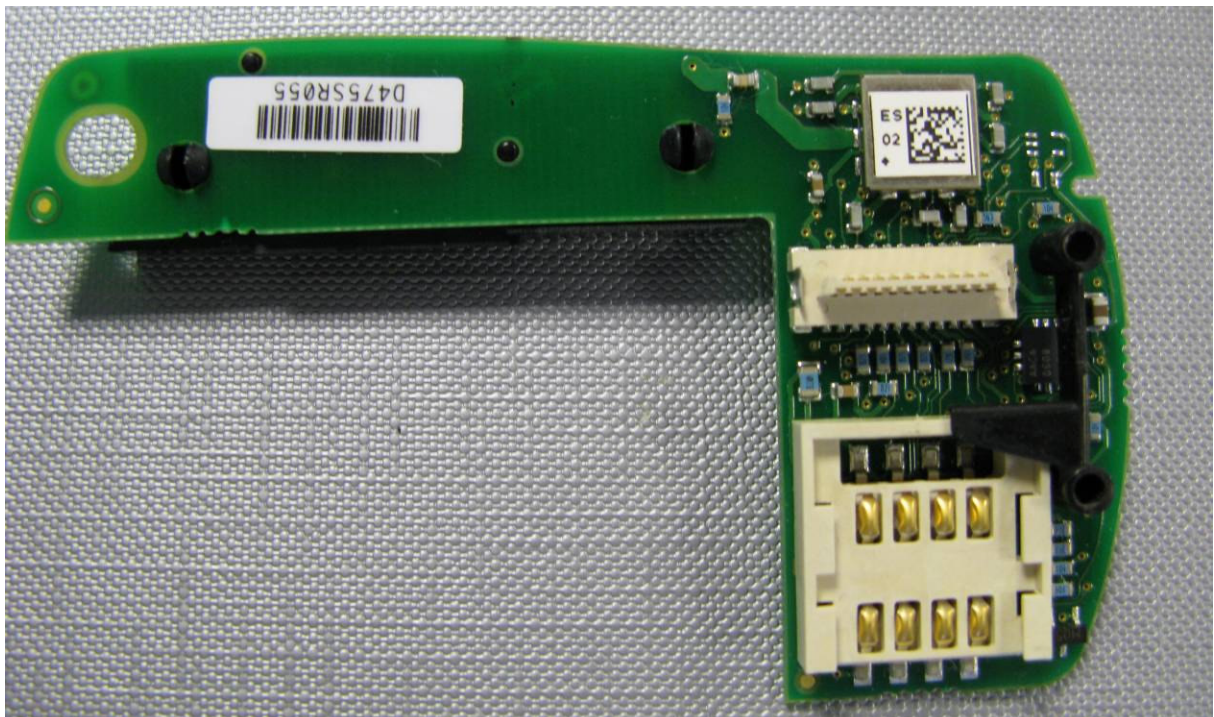
## Internal Photographs of the Symphony Meter

The internal view of the Symphony Meter is shown below in Figure 5. The antenna, RF board, RF module and the connection to the main PC board are identified in the photographs below and the detailed pictures of the rf board (both sides) are provided on the next page.





Bottom side of board with antenna removed



Component side of rf board with antenna removed