

## Internal Photographs of the Symphony Pump

Figure 1 is a front-view of the Symphony pump without the outer case and with the display removed. The RF Transceiver PCB is far left, seen edge-on. The antenna is not assembled to the device in this photograph.

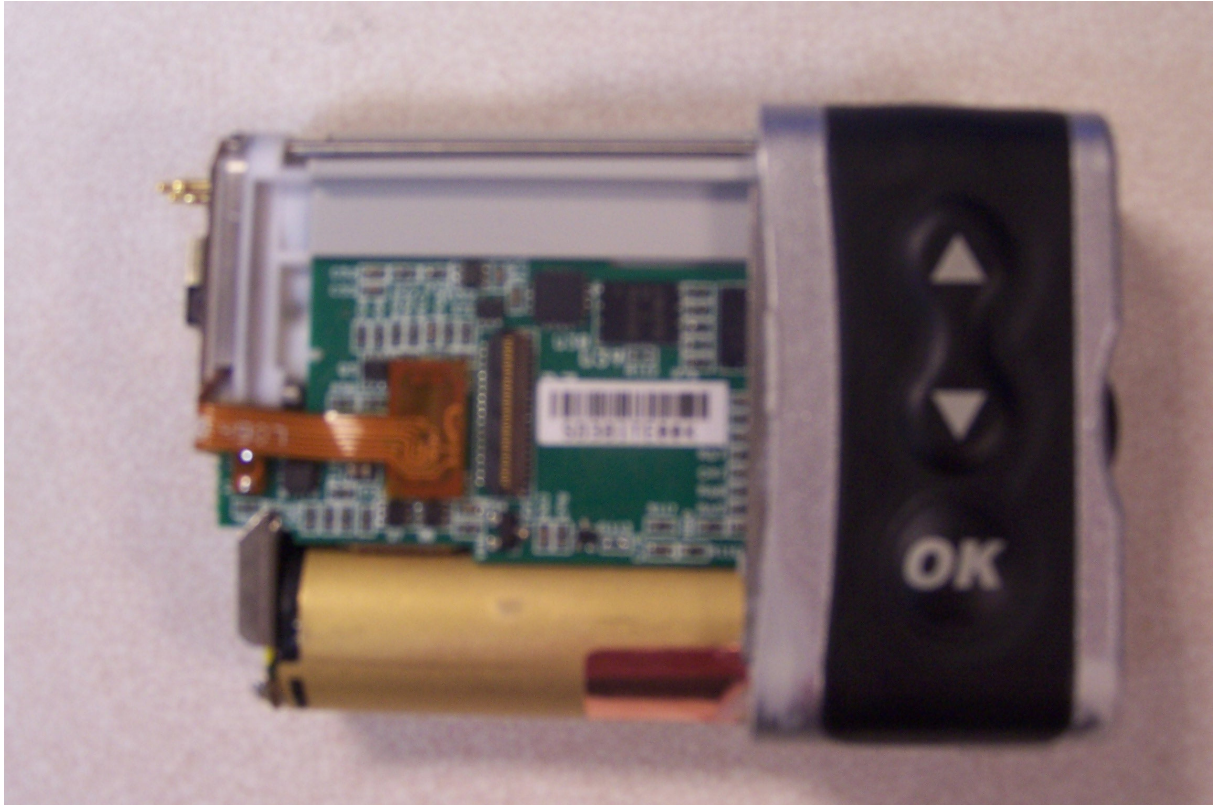


Figure 1: Symphony Pump Cover and Display Removed Front

Figure 2 is a back-view of the Symphony pump without the outer case. The RF Transceiver PCB is far left, seen edge-on. The antenna is not assembled to the device in this photograph.

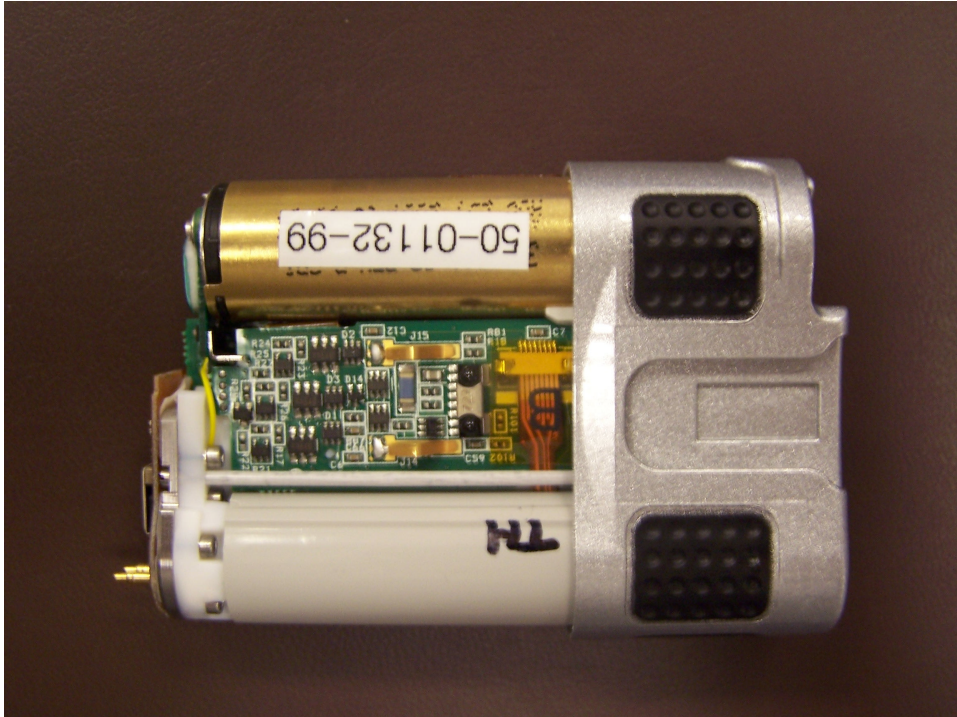


Figure 2: Symphony Pump Cover Removed Back

The next photograph is an end view of the Symphony Pump with the cover removed. This view shows the transceiver board with the RF chip in the center of the board. The antenna is not assembled to the device in this photograph.

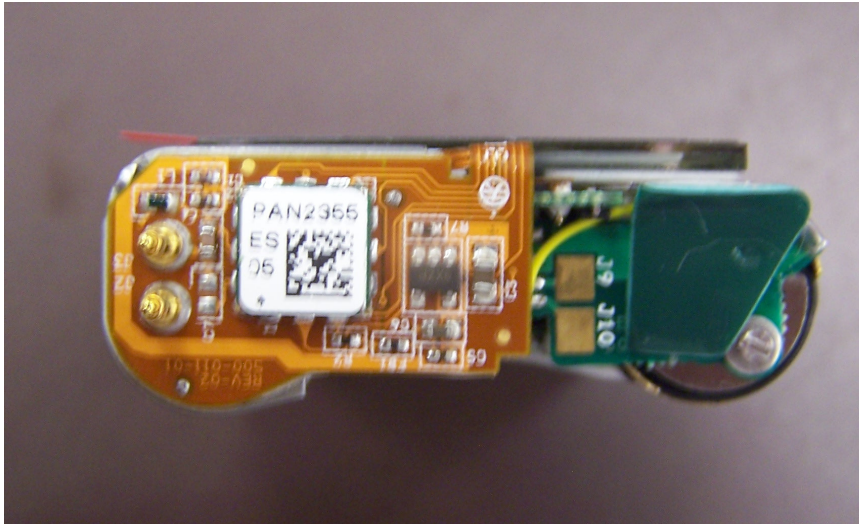


Figure 3: End of Symphony Pump with Cover Removed

The Symphony pump has an internal antenna located inside the pump's outer cover. The antenna connects to the RF Transceiver PCB via two pins. The last photograph of the Symphony Pump with cut-away cover show the transceiver board attached to the antenna.

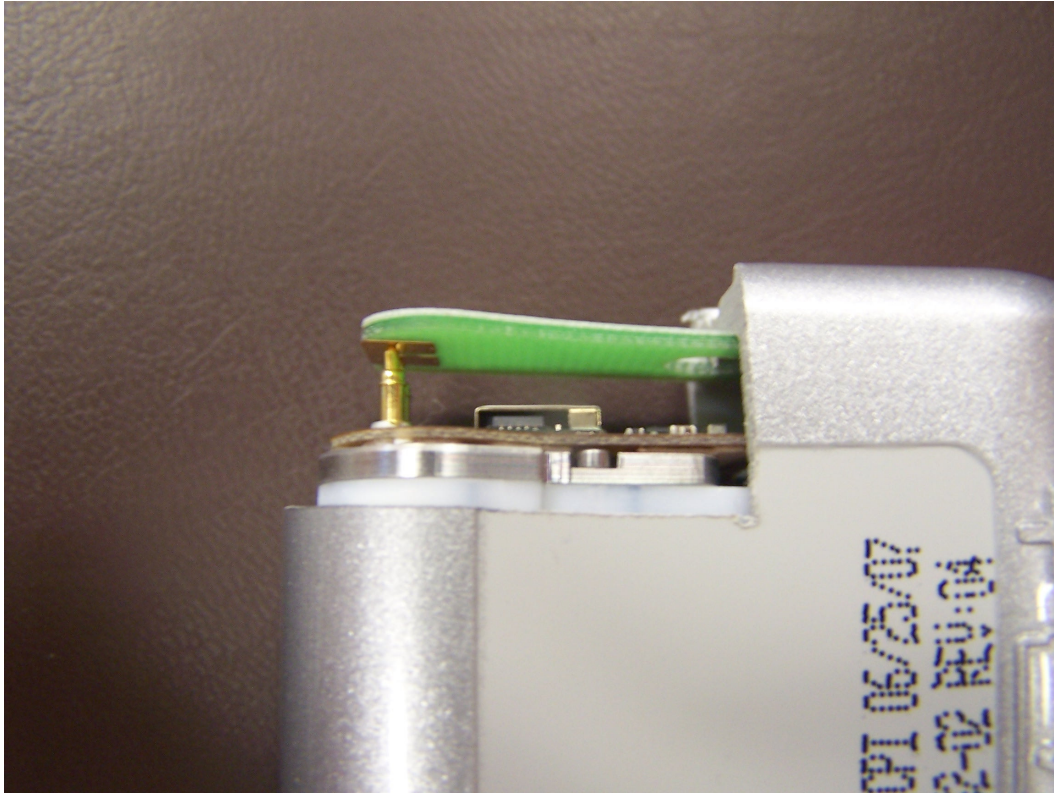


Figure 4: Symphony Pump Cut-Away Cover (shows antenna on stand-off pins)



Figure 5 is a picture of the top/front of the transceiver board prior to assembly into the pump.

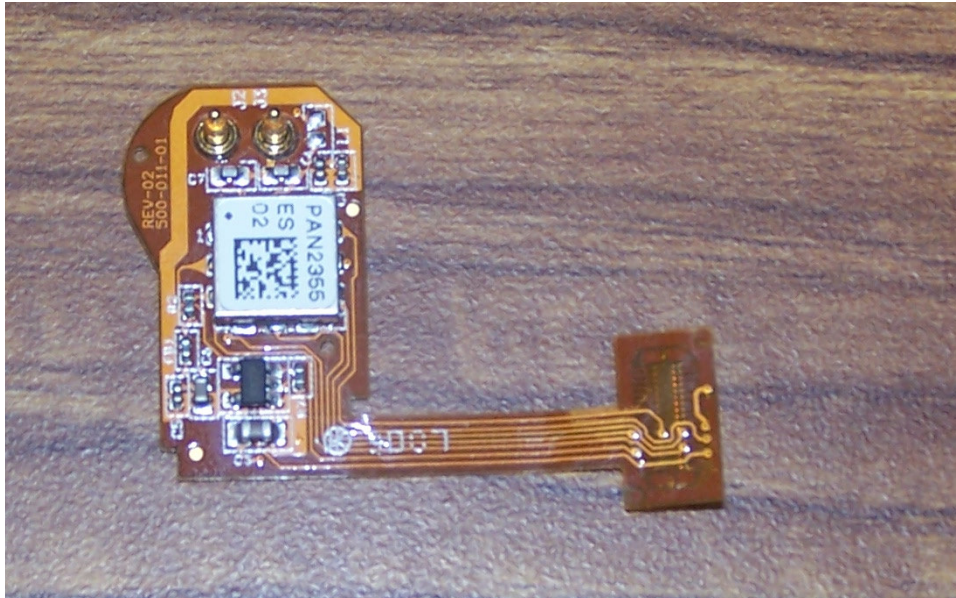


Figure 5: Front/Top of the Transceiver Board

The next photograph is a picture of the back/bottom of the transceiver board prior to assembly into the pump.

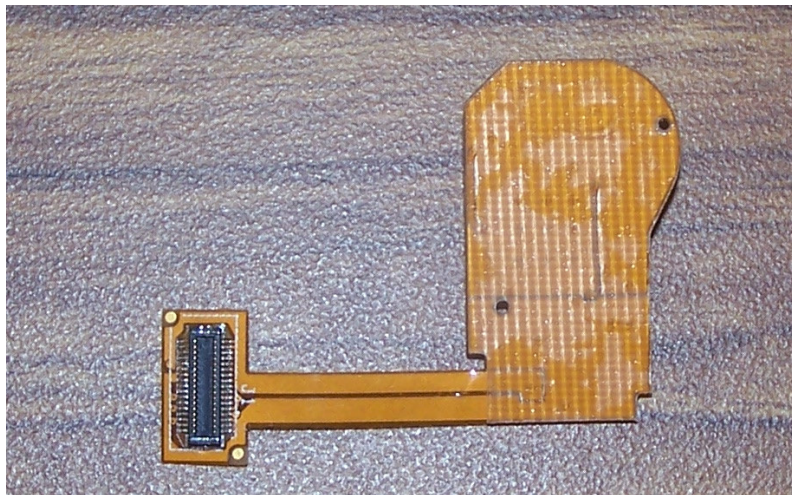


Figure 6: Back/Bottom of the Transceiver Board