




Test Report

Applicant: Y-S ELECTRONIC CO.,LTD (SHENG DONG FACTORY)
Address of Applicant: Huangtang Village, New 4th Admin Districts, Hengli Town, Dongguan City,
Guangdong Province
Equipment Under Test (EUT):
EUT Name: USB 2.0 Ethernet Card
Model No.: Y-S0028
Serial No.: Not supplied by client
Standards: FCC PART15 SUBPART B:2007
Date of Receipt: Dec 5, 2007
Date of Test: Dec 7, 2007
Date of Issue: Dec 12, 2007
Test Result : **PASS***

* In the configuration tested, the EUT complied with the standards specified above.

Authorized Signature:


Henly.xie / Manager

This report refers to the General Conditions for Inspection and Testing Services, printed overleaf

This report details the results of the testing carried out on one sample. The results contained in this test report do not relate to other samples of the same product. The manufacturer should ensure that all products in series production are in conformity with the product sample detailed in this report.

This report may only be reproduced and distributed in full. If the product in this report is used in any configuration other than that detailed in the report, the manufacturer must ensure the new system complies with all relevant standards.

The report must not be used by the client to claim product certification, approval, or endorsement by NVLAP, NIST, or any agency of the federal government.

All test results in this report can be traceable to National or International Standards.

The test report prepare by:

Guangzhou Huesent Testing Service Co.,Ltd.

Self-ordained 68# courtyard, No.91, Dongguanhuang Road,Guangzhou,China.

Tel: 86-20-87221453 Fax: 86-20-87221905

<http://www.hst.org.cn> E-mail:hst@hst.org.cn



2. Test Summary

Test	Test Requirement	Test Method	Class / Severity	Result
Radiated Emission (30MHz to 1GHz)	FCC PART 15, SUBPART B: 2007	ANSI C63.4:2003	Class B	PASS
Conducted Emission (150KHz to 30MHz)	FCC PART 15, SUBPART B: 2007	ANSI C63.4:2003	Class B	PASS



3. Contents

TITLE PAGE	
1	COVER PAGE 1
2	TEST SUMMARY..... 2
3	CONTENTS..... 3
4	GENERAL INFORMATION..... 4
4.1	CLIENT INFORMATION..... 4
4.2	GENERAL DESCRIPTION OF E.U.T..... 4
4.3	DETAILS OF E.U.T..... 4
4.4	DESCRIPTION OF SUPPORT UNITS..... 4
4.5	STANDARDS APPLICABLE FOR TESTING..... 4
4.6	TEST LOCATION..... 4
4.7	TEST FACILITY... .. 4
4.8	DEVIATION FROM STANDARDS..... 4
4.9	ABNORMALITIES FROM STANDARD CONDITIONS... .. 4
5	EQUIPMENTS USED DURING TEST... .. 5
6	TEST RESULTS..... 6
6.1	CONDUCTED EMISSIONS MAINS TERMINALS, 150kHz TO 30MHz... .. 6
6.1.1	E.U.T. Operation..... 6
6.1.2	Plan View of Test Setup..... 6
6.1.3	Measurement Data... .. 6
6.2	RADIATED EMISSIONS, 30MHz TO 1GHz... .. 9
6.2.1	E.U.T. Operation..... 9
6.2.2	Test Setup... .. 9
6.2.3	Measurement Data... .. 9
7	PHOTOGRAPHS 12
7.1	CONDUCTED EMISSION TEST SETUP..... 12
7.2	RADIATED EMISSION TEST SETUP..... 13
7.3	EUT CONSTRUCTIONAL DETAILS..... 14



4. General Information

4.1 Client Information

Applicant: Y-S ELECTRONIC CO.,LTD (SHENG DONG FACTORY)
Address of Applicant: Huangtang Village, New 4th Admin Districts, Hengli Town,
Dongguan City, Guangdong Province

4.2 General Description of E.U.T.

EUT Name: USB 2.0 Ethernet Card
Item No.: Y-S0028
Serial No.: Not supplied by client

4.3 Details of E.U.T.

Power Supply: By host USB port
Power Cord: USB cord with screen, 30 cm

4.4 Description of Support Units

The EUT has been tested with a Dell PC system.

4.5 Standards Applicable for Testing

The customer requested FCC tests for an USB 2.0 Ethernet Card
The standard used was FCC PART 15, SUBPART B, CLASS B 2007

4.6 Test Location

All tests were subcontract to the laboratory following-
SGS-CSTC Standards Technical Services Co.,Ltd.,
No.1 Workshop,M-10,Middle Section, Science & Technology Park, Shenzhen, China
FCC- Registratrion No: 556682 in Aug 04, 2005
IC- Registratrion No: 6002.
CNAS- Accreditation No: L2929, issued in Mar 2, 2006

4.8 Deviation from Standards

None.

4.9 Abnormalities from Standard Conditions

None.

5. Equipments Used during Test

RE in Chamber						
Item	Test Equipment	Manufacturer	Model No.	Inventory No.	Cal.Date (dd-mm-yy)	Cal.Due date (dd-mm-yy)
1	3m Semi-Anechoic Chamber	ETS-LINDGREN	N/A	SEL0017	16-06-2007	15-06-2008
2	EMI Test Receiver	Rohde & Schwarz	ESIB26	SEL0023	14-12-2006	13-12-2007
3	EMI Test software	AUDIX	E3	SEL0050	N/A	N/A
4	Coaxial cable	SGS	N/A	SEL0028	01-06-2007	31-05-2008
5	BiConiLog Antenna (26-3000MHz)	ETS-LINDGREN	3142C	SEL0015	03-03-2007	02-03-2008
6	Pre-amplifier (0.1-1300MHz)	Agilent Technologies	8447D	SEL0053	27-06-2007	26-06-2008
7	Double-ridged horn (1-18GHz)	ETS-LINDGREN	3117	SEL0005	30-12-2005	29-12-2007
8	Pre-amplifier (1-18GHz)	Rohde & Schwarz	AFS42-00101 800-25-S-42	SEL0081	27-06-2007	26-06-2009

Conducted Emission						
Item	Test Equipment	Manufacturer	Model No.	Inventory No.	Cal.Date (dd-mm-yy)	Cal.Due date (dd-mm-yy)
1	Shielding Room	Zhong Yu Electron	GB-88	SEL0042	N/A	N/A
2	LISN	ETS-LINDGREN	3816/2	SEL0021	27-06-2007	26-06-2008
3	ISN	Rohde & Schwarz	ENY 22 1109	EMC0114	27-06-2007	26-06-2008
4	ISN	Rohde & Schwarz	ENY 41 1110	EMC0115	27-06-2007	26-06-2008
5	EMI Test Receiver	Rohde & Schwarz	ESCI	SEL0022	27-06-2007	26-06-2008
6	Coaxial Cable	SGS	N/A	SEL0024	18-10-2007	17-10-2008



6. Test Results

6.1 Conducted Emissions Mains Terminals, 150 kHz to 30MHz

Test Requirement: FCC Part 15 B
Test Method: ANSI C63.4
Class / Severity: Class B
Detector: Peak for pre-scan (9kHz Resolution Bandwidth)
Quasi-Peak if maximised peak within 6dB of Quasi-Peak limit
Test Date: Dec 07,2007

6.1.1 E.U.T. Operation

Operating Environment:
Temperature: 25.0°C Humidity:52% RH Atmospheric Pressure: 1002mBar
EUT Operation:
Test in exchange data mode.

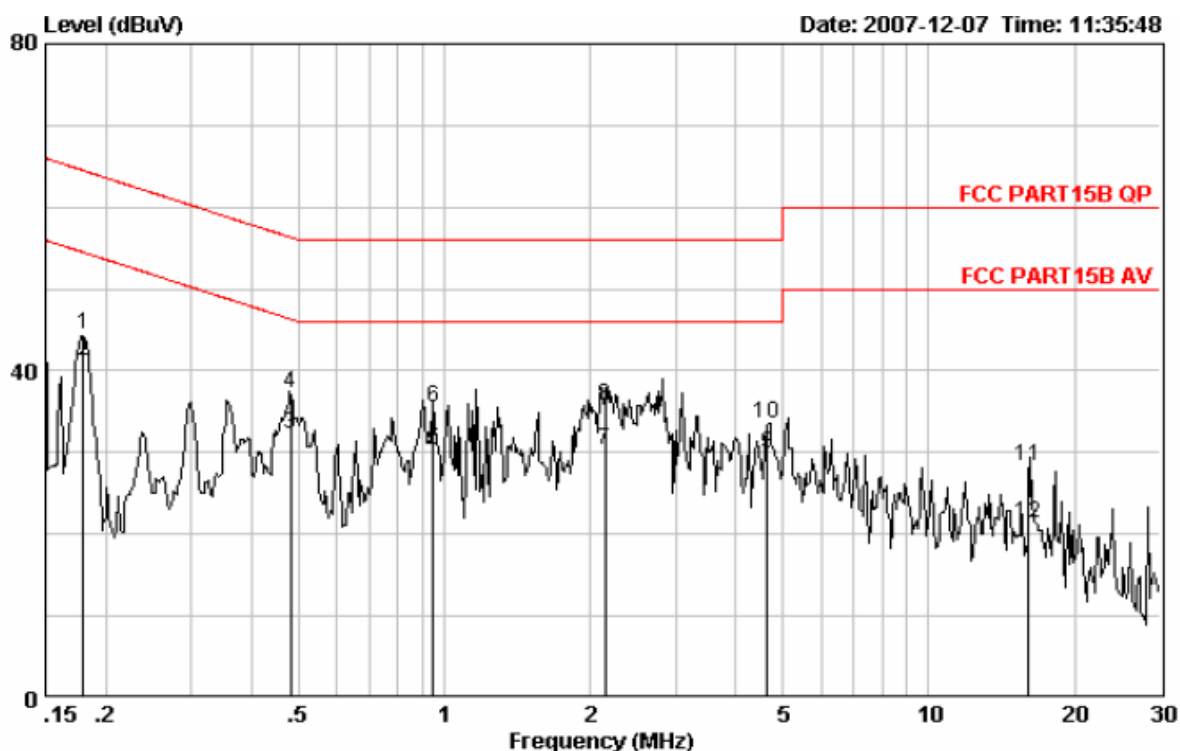
6.1.2 Plan View of Test Setup

6.1.3 Measurement Data

An initial pre-scan was performed on the live and neutral lines with peak detector.
Quasi-Peak and Average measurement were performed at the frequencies with maximized
emission were detected when Peak measurement level is over Average Limit.

Live Line- exchange data mode:

Peak Scan

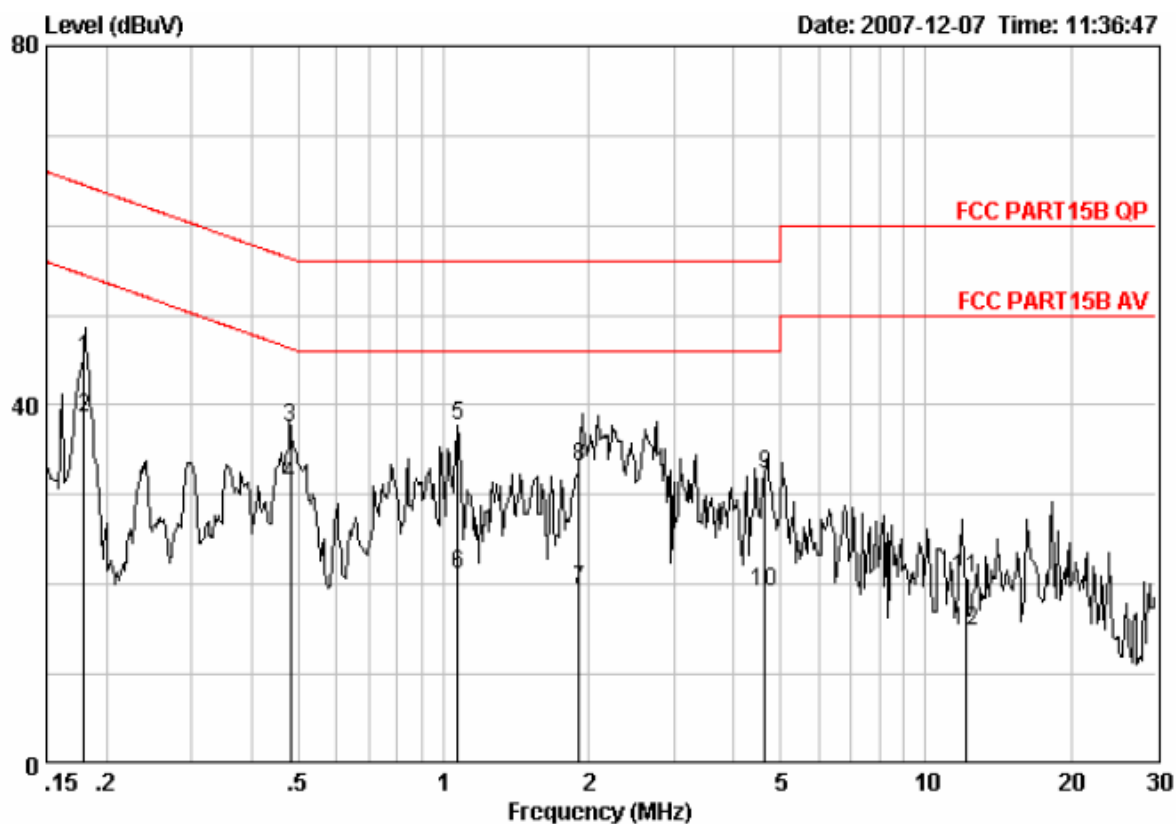


Quasi-peak and Average measurement

Freq	Cable Loss	LISN Factor	Read Level	Level	Limit Line	Over Limit	Remark
MHz	dB	dB	dBuV	dBuV	dBuV	dB	
0.17961	-0.06	-0.05	44.49	44.38	64.50	-20.12	QP
0.17961	-0.06	-0.05	41.26	41.15	54.50	-13.35	Average
0.48119	0.00	-0.04	32.22	32.18	46.32	-14.14	Average
0.48119	0.00	-0.04	37.25	37.20	56.32	-19.12	QP
0.94809	0.09	-0.05	30.32	30.36	46.00	-15.64	Average
0.94809	0.09	-0.05	35.46	35.50	56.00	-20.50	QP
2.144	0.10	-0.06	30.33	30.37	46.00	-15.63	Average
2.144	0.10	-0.06	35.67	35.70	56.00	-20.30	QP
4.647	0.10	-0.10	29.94	29.94	46.00	-16.06	Average
4.647	0.10	-0.10	33.56	33.56	56.00	-22.44	QP
16.055	0.29	-0.53	28.50	28.25	60.00	-31.75	QP
16.055	0.29	-0.53	21.58	21.34	50.00	-28.66	Average

Neutral Line- exchange data mode:

Peak Scan



Quasi-peak and Average measurement

Freq	Cable Loss	LISN Factor	Read Level	Level	Limit Line	Over Limit	Remark
MHz	dB	dB	dBuV	dBuV	dBuV	dB	
0.17961	-0.06	-0.04	45.29	45.18	64.50	-19.32	QP
0.17961	-0.06	-0.04	38.75	38.65	54.50	-15.86	Average
0.48119	0.00	-0.04	37.44	37.40	56.32	-18.92	QP
0.48119	0.00	-0.04	31.28	31.24	46.32	-15.08	Average
1.071	0.10	-0.05	37.57	37.62	56.00	-18.38	QP
1.071	0.10	-0.05	21.03	21.08	46.00	-24.92	Average
1.908	0.10	-0.06	19.27	19.31	46.00	-26.69	Average
1.908	0.10	-0.06	33.17	33.21	56.00	-22.79	QP
4.647	0.10	-0.11	32.21	32.19	56.00	-23.81	QP
4.647	0.10	-0.11	19.25	19.23	46.00	-26.77	Average
12.124	0.24	-0.39	20.93	20.77	60.00	-39.23	QP
12.124	0.24	-0.39	15.04	14.88	50.00	-35.12	Average

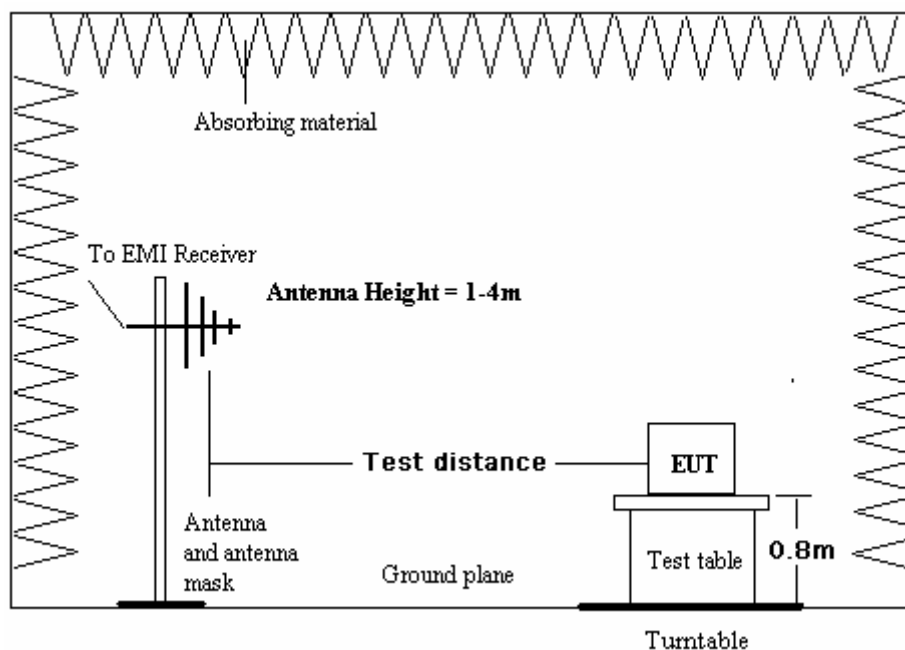
6.2 Radiated Emissions, 30MHz to 1GHz

Test Requirement: FCC Part15 B
Test Method: ANSI C63.4
Class: Class B
Detector: Peak for pre-scan (120kHz resolution bandwidth)
Quasi-Peak if maximised peak within 6dB of limit
Test Date: Dec 07,2007

6.2.1 E.U.T. Operation

Operating Environment:
Temperature: 25°C Humidity:52% RH Atmospheric Pressure: 1002mBar
EUT Operation:
Test EUT in exchange data mode.

6.2.2 Test Setup



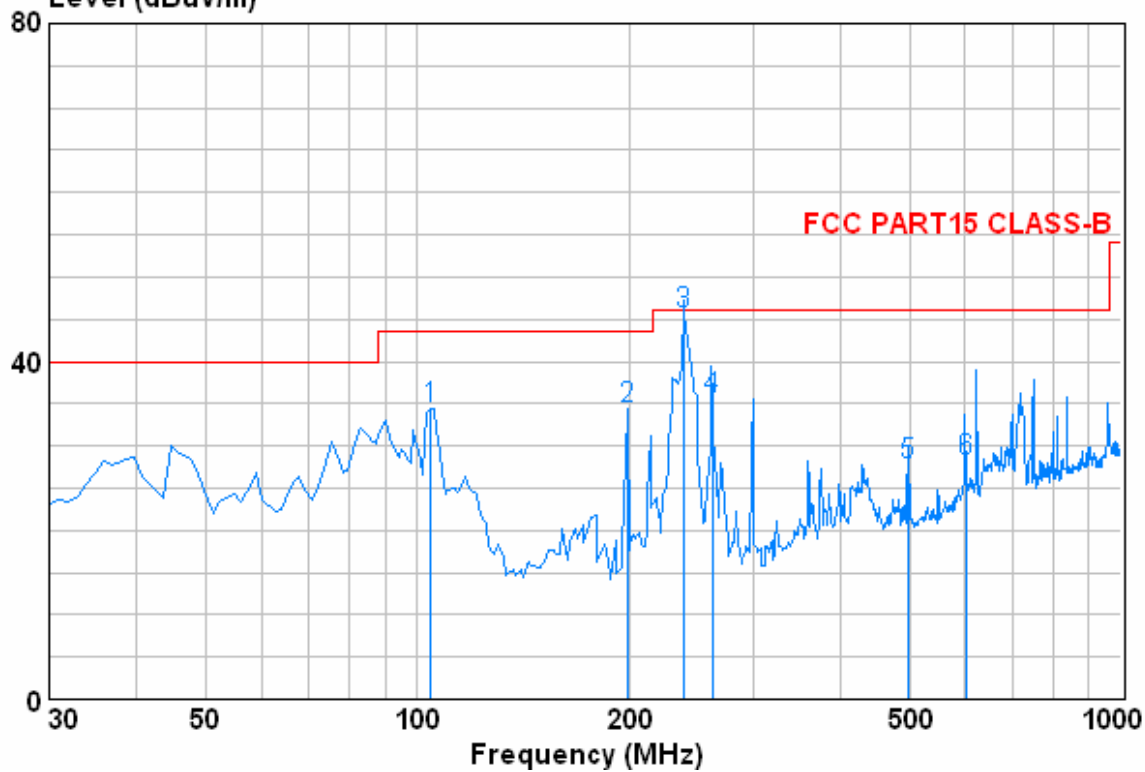
6.2.3 Measurement Data

An initial pre-scan was performed in the 3m chamber using the spectrum analyser in peak detection mode. Quasi-peak measurements were conducted based on the peak sweep graph. The EUT was measured by Bilog antenna with 2 orthogonal polarities

Vertical—exchange data mode:

Peak scan

Level (dBuV/m)



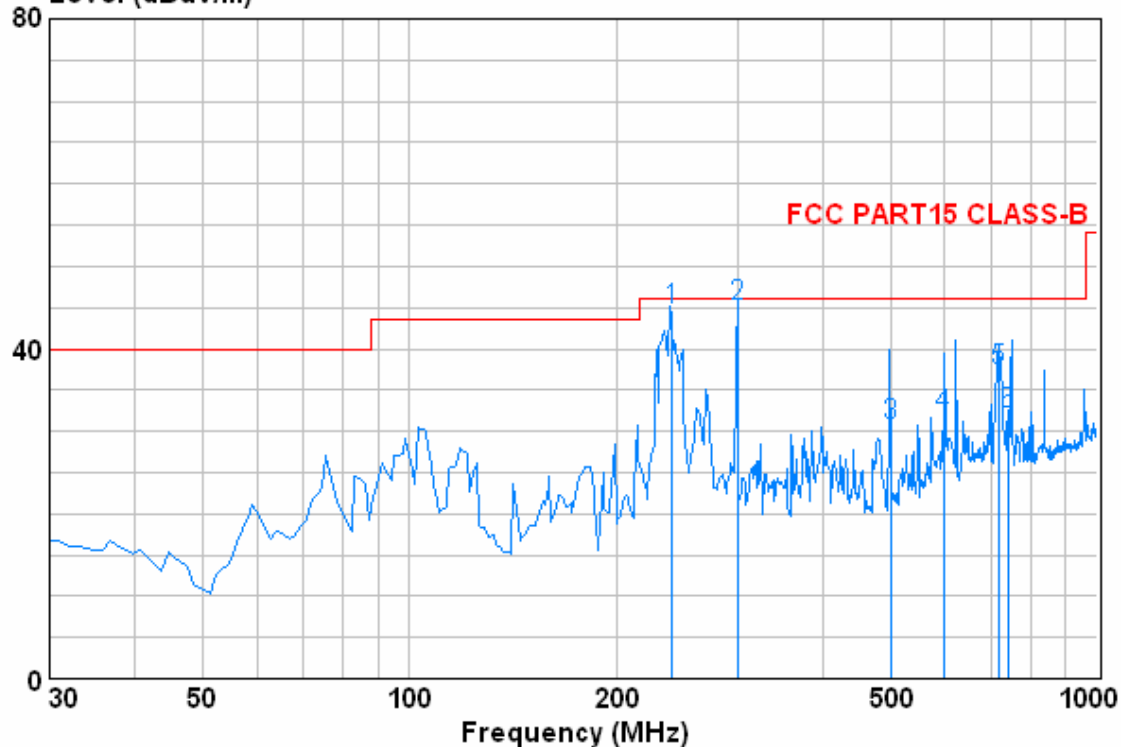
Quasi-peak measurement

Antenna Freq	Antenna Factor	Cable Loss	Preamp Factor	Read Level	Level	Limit Line	Over Limit
MHz	dB/m	dB	dB	dBuV	dBuV/m	dBuV/m	dB
104.690	8.87	1.21	27.83	52.04	34.30	43.50	-9.20
198.780	10.19	1.40	27.16	49.86	34.29	43.50	-9.21
239.520	11.99	1.62	26.96	58.95	45.60	46.00	-0.40
262.800	12.57	1.74	26.86	48.17	35.61	46.00	-10.39
497.540	17.80	2.59	27.70	35.00	27.69	46.00	-18.31
601.330	19.80	2.70	27.61	33.28	28.18	46.00	-17.82

Horizontal—exchange data mode:

Peak scan

Level (dBuV/m)



Quasi-peak measurement

Antenna Freq	Antenna Factor	Cable Loss	Preamp Factor	Read Level	Level	Limit Line	Over Limit
MHz	dB/m	dB	dB	dBuV	dBuV/m	dBuV/m	dB
240.020	11.99	1.62	26.96	58.00	44.65	46.00	-1.35
300.018	13.90	1.90	26.72	56.00	45.08	46.00	-0.92
500.450	17.80	2.60	27.71	38.09	30.79	46.00	-15.21
598.420	19.74	2.70	27.62	36.96	31.78	46.00	-14.22
719.670	21.60	2.96	27.21	40.13	37.48	46.00	-8.52
743.920	21.68	3.04	27.13	34.42	32.01	46.00	-13.99

7. Photographs

7.1 Conducted Emission Test Setup

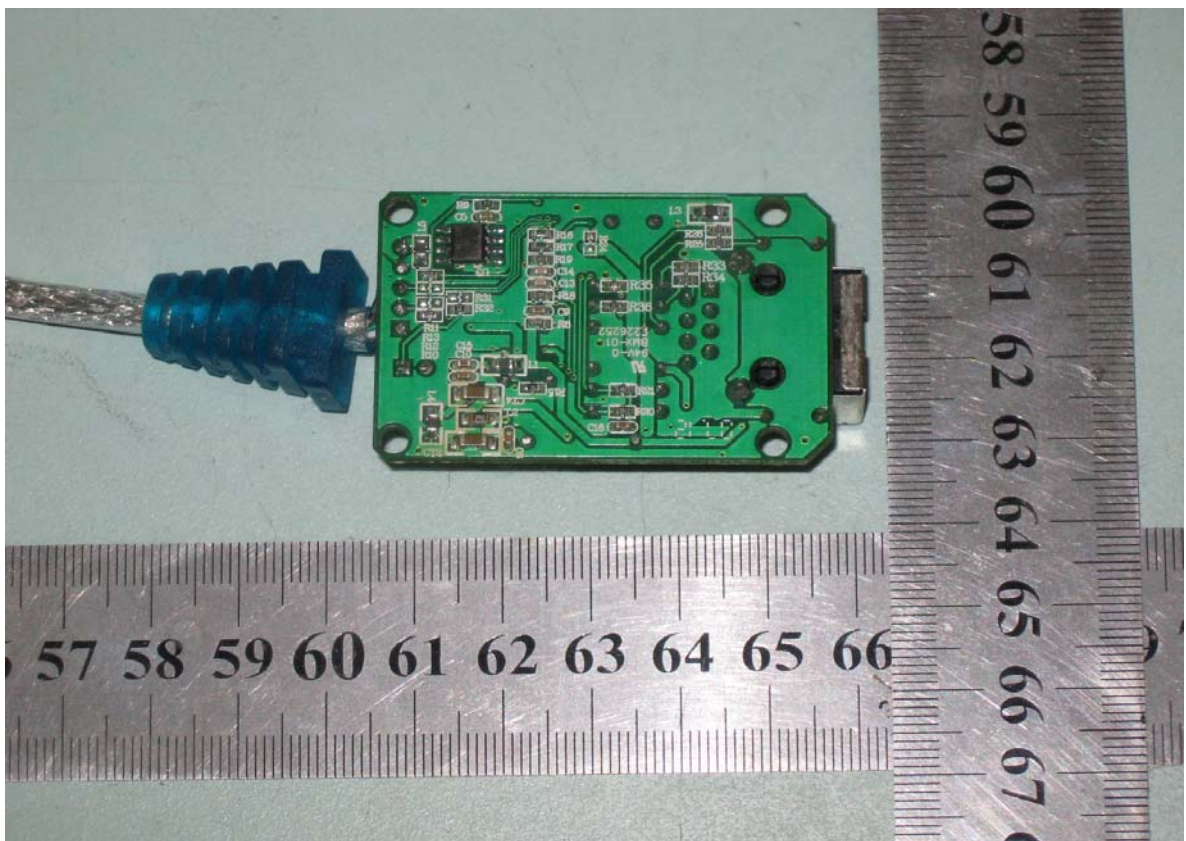
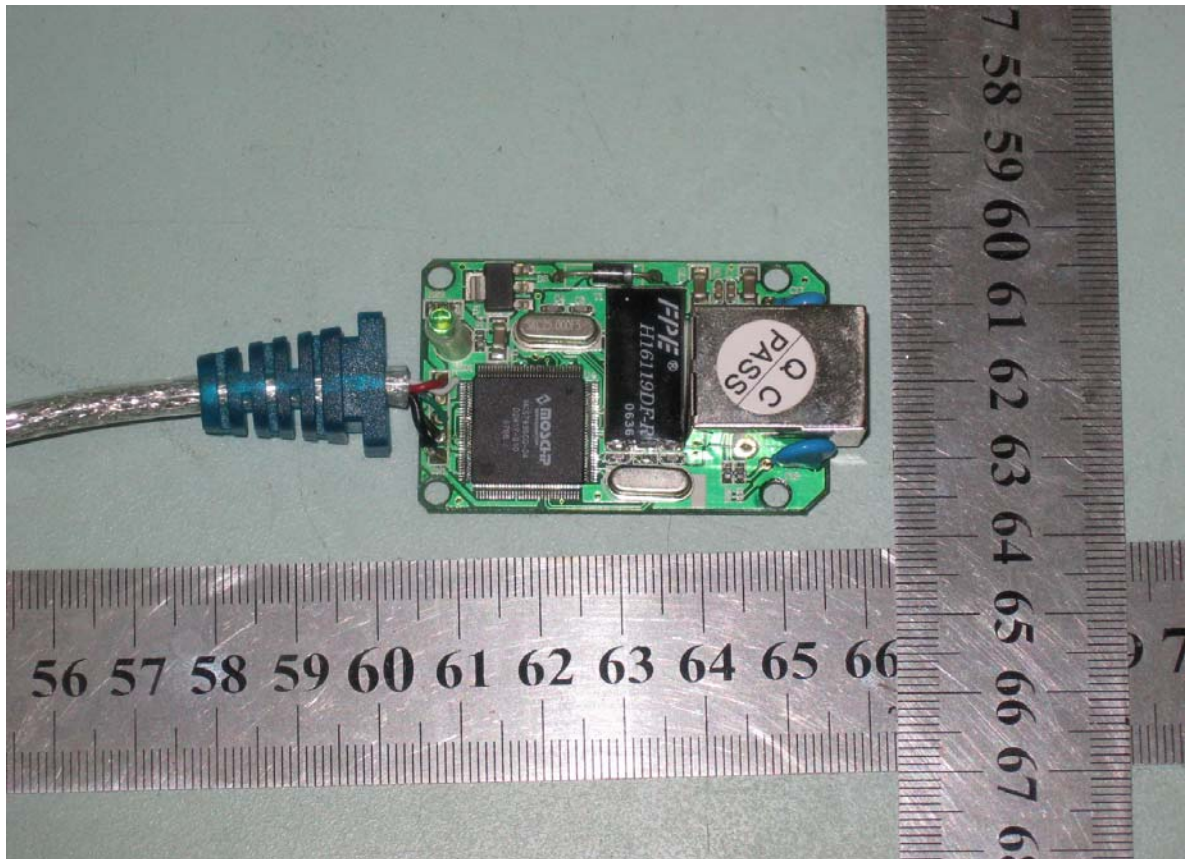


7.2 Radiated Emission Test Setup



7.3 EUT Constructional Details





End of Report