

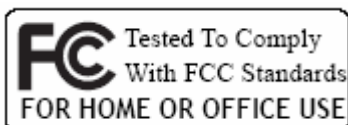
IEEE 802.11ac/a/b/g/n

WLAN and BT Combo Adapter

LM813

USER'S GUIDE

VERSION 1.1



© All rights reserved.

All trade names are registered trademarks of respective manufacturers listed.

This manual may not be copied in any media or form without the written consent of original maker.

TABLE OF CONTENTS

1. Introduction	1
2. Wireless LAN Basics	3
3. IP ADDRESS	4
4. Install Driver/Utility	5
4.1 Windows 7/8.1/10.....	5
5. Wireless/Bluetooth Network Configuration	7
5.1 Utility Icon	7
5.2 Client Mode (Default Setting).....	7
5.3 Virtual WiFi	13
5.4 Access Point	14
5.5 Bluetooth Setup.....	16
6. Technical Specifications	18
7. Troubleshooting	20
8. Glossary	21



INTRODUCTION

Thank you for your purchase of the WLAN and Bluetooth dual mode Adapter. Featuring wireless technology, this wireless networking solution has been designed for both large and small businesses, and it is scalable so that you can easily add more users and new network features depending on your business scale.

FEATURES

- Support Microsoft 7 / 8.1 / 10 (32bit/64bit)
- Operating distance of up to 300 meters in free space.
- 433.3/300/270/240/180/120/90/60/54/48/36/30/24/22/18/12/11/6/5.5/2/1 Mbps selectable Data Rate according to client adapter default antennas.
- 64/128-bit WEP , WPA, WPA2, WPS
- 2.400GHz ~ 2.4835GHz unlicensed ISM Frequency Band. Modulation Method. 5GHz UNII, Midband, ISM bands.
- IEEE 802.11b : DSSS (Direct Sequence Spread Spectrum).
- IEEE 802.11 ac/a/g/n : OFDM (Orthogonal Frequency Division Multiplexing).
- Easy operation and setting up.
- Bluetooth 2.1 / 4.2 dual mode integrated with Microsoft Windows Bluetooth features.

SYSTEM REQUIREMENTS

Windows System : 7 / 8.1 / 10 (32bit/64bit). PCs must have a device driver installed. It allows you to communicate with WLAN 11ac USB Client Adapter.

BEFORE YOU START

1. Confirm Box Contents

- ◆ WLAN 11ac USB Client Adapter
- ◆ Quick Start Guide
- ◆ Driver CD

CONNECTING YOUR WLAN 11ac USB CLIENT ADAPTER TO PC

Quick Start Guide

Connect your WLAN 11ac USB Client Adapter to your PC. Install driver.

GETTING TO KNOW WIRELESS LAN ADAPTER

LED Status

- Quick Blinking – Adapter connects to Access Point.
- Steady Blinking – Adapter is active.
- Off – Adapter is disabled.

Best Performance Requirement

- 1T1R ac Adapter
- USB 2.0
- Windows 7 or above
- Wireless utility installed
- Wireless 802.11ac AC1750 AP/Router with gigabit Ethernet port

2

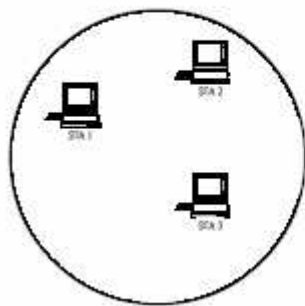
WIRELESS LAN BASICS

Wireless LAN network defined by IEEE 802.11ac/a/b/g standard committee
Could be configured as:

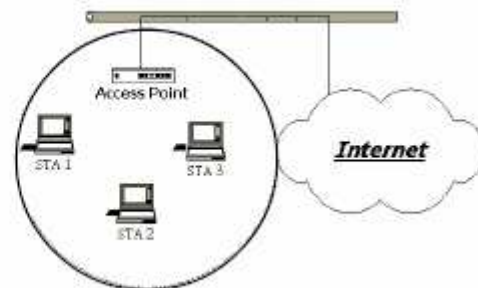
Ad Hoc wireless LAN – (Win10 is not available)

Infrastructure wireless LAN.

Ad Hoc network is a group of PCs installed with wireless LAN cards; this group of PCs is called a BSS (Basic Service Set). PCs in this group can use their wireless LAN cards to communicate with each other, but can not connect to the **Internet**.



Ad Hoc Wireless Network



Infrastructure Wireless Network

The most obvious difference between **Infrastructure** wireless network and **Ad Hoc** wireless network is that the PCs in **Infrastructure** wireless network can access the resource in the Internet through **Access Point**.

Depending on your requirement, you can easily set up your PC's network to be a "**Ad Hoc**" or "**Infrastructure**" wireless network. Generally speaking, if in your network, there is an **Access Point** in it, we recommend you to set your network as an "**Infrastructure**", so it can connect to the **Internet**.

3

IP ADDRESS

To use the WLAN 11ac USB Client Adapter with a computing device, the WLAN and Bluetooth Combo Adapter must be equipped with a proper Interface. All drivers and supporting software for the WLAN Adapter must be installed and configured first.

Ask your system administrator for the following information, which you may need to provide during driver installation :

- ◆ Your Wireless Client Name.
- ◆ Your Wireless SSID.
- ◆ Your computer's unique client name and workgroup name. For your network account, your user name and password.
- ◆ Your IP address, gateway address, and subnet mask if you're not using a DHCP client.

Any computer on a network is identified by a unique network address. There are two methods to assign a network address to a computer on a TCP/IP network :

- ◆ Static IP addressing.
- ◆ Dynamic IP addressing (DHCP Client).

In network with static IP addressing, the network administrator manually assigns an IP address to each computer. Once a static IP address is assigned, a computer uses the same IP address every time it reboots and logs on to the network. You may manually change the IP address in the **Network Properties dialog box**. Network using static IP address is easy to set up and do not require additional network management software.

In network with dynamic IP addressing, a DHCP server in the network dynamically assigns IP addresses to all clients every time they log on to the network. Network using dynamic IP address requires setting up and running a DHCP Server.

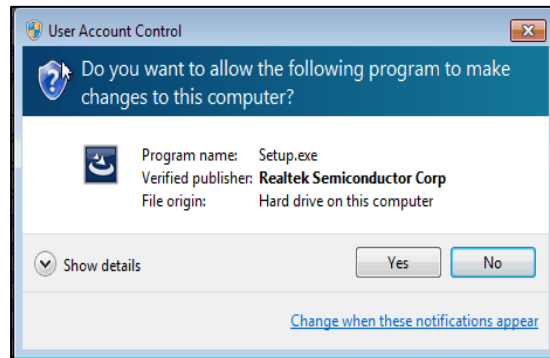
4

INSTALL DRIVER / UTILITY

The installation & driver CD will automatically activate the autorun installation program after you insert the disk into your CD drive.

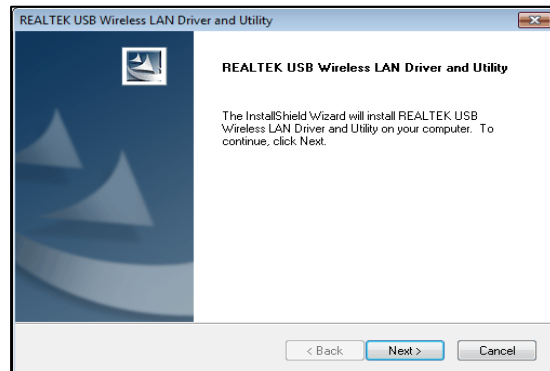
Step 1 : (Win7/8.1/10 only)

Insert the installation CD into your CD-ROM. Win7/8.1/10 UAC Dialog is shown. Click **Yes** to continue.



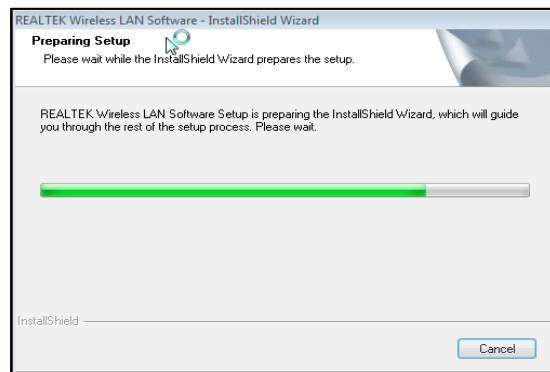
Step 2 :

Wizard is ready to install driver and utility. Click **Next** to begin the installation

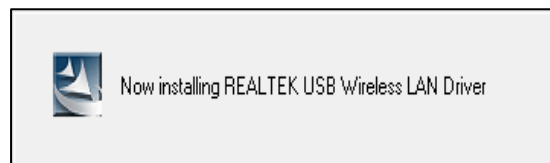


Step 3 :

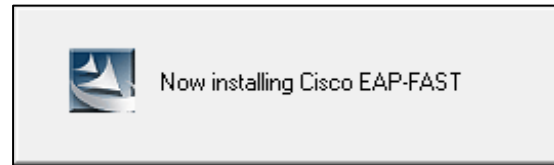
Preparing Setup dialog is shown



Installing & configuring WLAN driver and utility



Installing Cisco 802.1x module



Step 4 :

Click **Finish** to complete installation. The installation will affect after windows rebooting

5

WIRELESS NETWORK CONFIGURATION

WLAN 11ac USB Client Adapter uses its own management software. All functions controlled by users are provided by this application. When you insert the WLAN Adapter into your laptop or desktop, a icon should appear in the Windows System Tray automatically.

5.1 Utility Icon

- Client mode utility running but no WLAN Adapter plugged



- Client mode utility running and WLAN Adapter scan available network.



- Client mode utility running and WLAN Adapter can not scan any AP



5.2 Client Mode (Default Setting)

<input checked="" type="checkbox"/> Show Tray Icon	<input type="checkbox"/> Disable Adapter
<input type="checkbox"/> Radio Off	<input type="checkbox"/> Virtual WiFi allowed

Wireless Device Control :

- Show Tray Icon – Show icon or not show icon in system tray.
- Radio Off – To stop wireless signal.
- Disable Adapter – To stop wireless device.
- Virtual WiFi allowed – To enable Soft AP

5.2.1 GENERAL SETTING

Once device is set, double click on that icon and the configuration window will pop up as shown. It shows the current connected network.

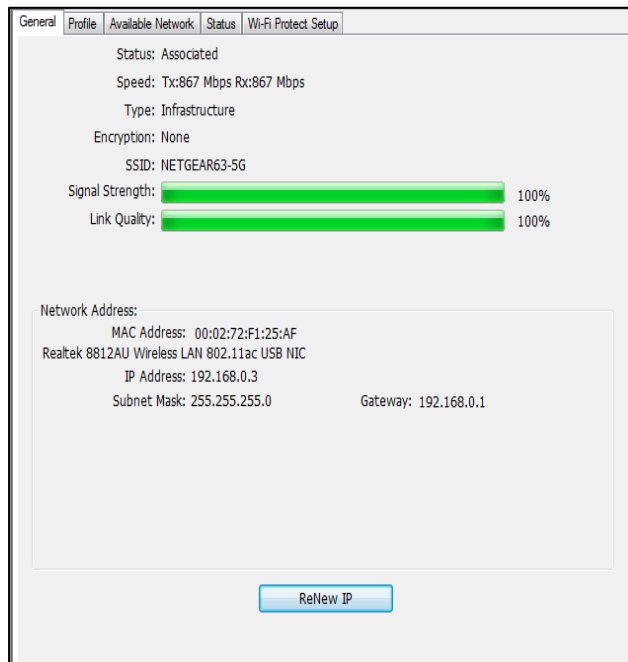
The signal strength and link quality are displayed also.

The bar graph displays the quality and strength of the link between the node and its Access

Point. Link Quality is a measurement of receiving and transmitting performances over the radio.

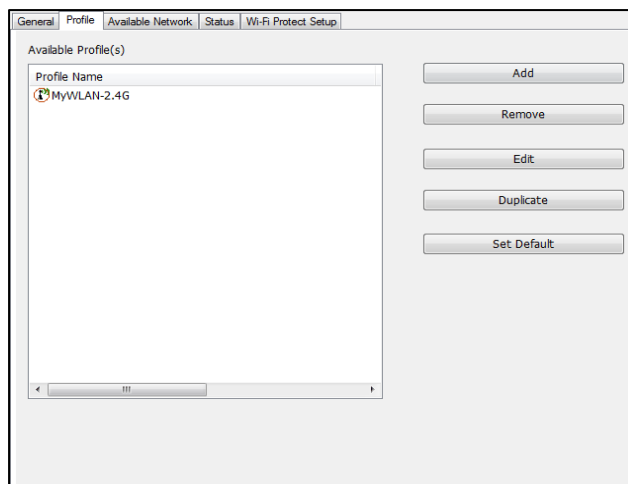
Network Address displays current MAC Address, IP Address, Subnet. and Gateway.

Click **Renew IP** button to refresh IP address leased from wireless AP.



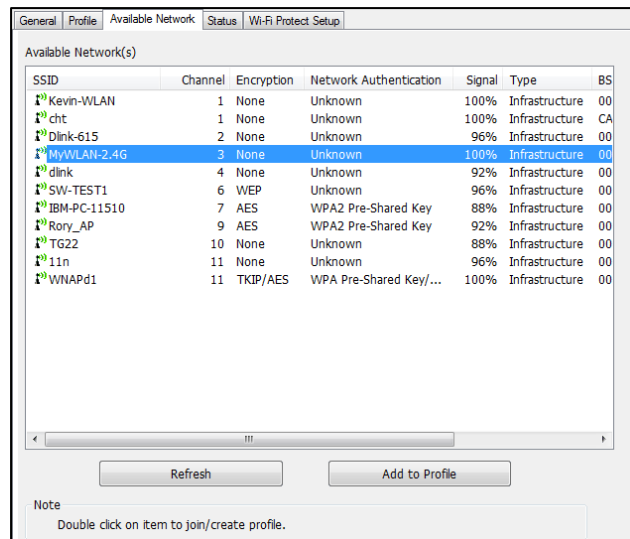
5.2.2 PROFILE SETTING

In profile tab, you can **Add, Remove, Edit, Duplicate** and **Set Default** to manipulate profile content manually. Strongly recommend to use profile after you do **Available Network**.

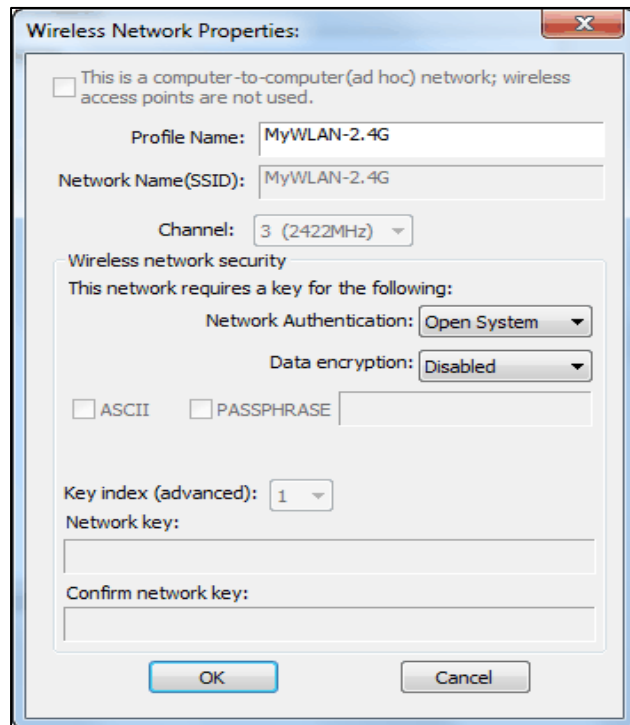


5.2.3 AVAILABLE NETWORK SETTING

Click **Available Network** tab and it will show all available networks that radio can reach. Select proper SSID & BSSID you want to connect. Click **Refresh** button to force and rescan available networks currently.

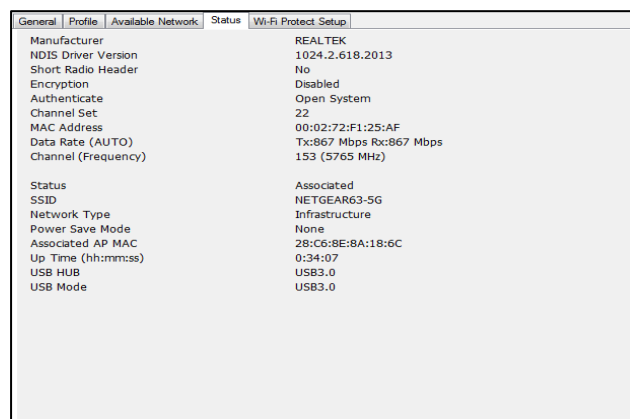


Select one of SSIDs, and click **Add to Profile** to create profile that can be configured more wireless parameters. In this page, you can edit your profile name, configure wireless security like WEP, WPA, WPA2, 802.1x ...etc. After finishing setup, click **OK** button to save configuration



5.2.4 Status

Dialog shows Manufacture, NDIS Driver Version, Short Radio Header, Encryption, Authentication, Channel Set, Mac Address... etc information



5.2.5 Wi-Fi Protected Setup

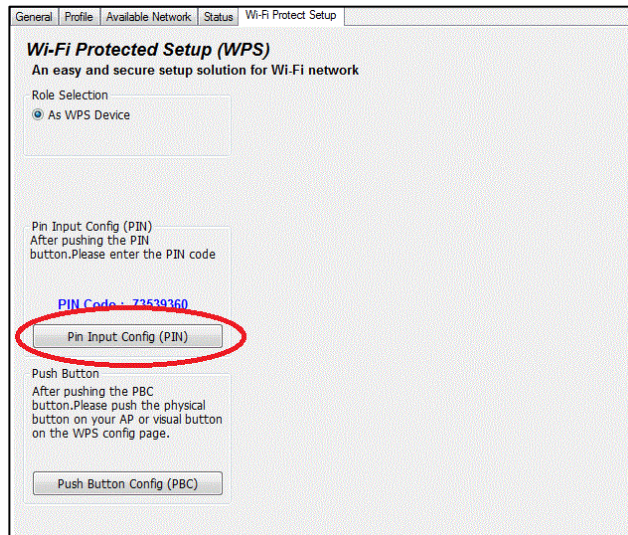
An easy and secure setup solution for Wi-Fi network. you can choose PIN Code or Push Button method to connect to an AP.



■ Pin method:

Step 1 :

Press “Pin Input Config (PIN)” button.



Step 2 :

Select a specific AP



Step 3 :

Enter the PIN code into your AP.

Wi-Fi Protected Setup

This page allows you to change the setting for WPS (Wi-Fi Protected Setup). Using this feature could let your wireless client automatically synchronize its setting and connect to the Access Point in a minute without any hassle.

Disable WPS

WPS Status: Configured UnConfigured

Self-PIN Number:

Push Button Configuration:

Current Key Info:

Authentication	Encryption	Key
Open	None	N/A

Client PIN Number:

Step 4 :

Select AP that you want to configure.

Wi-Fi Protected Setup - Select AP

WPS AP Name	WPS AP MAC
Welead	00:13:F7:C9:D9:35
280_USB_TEST	00:02:72:45:64:56

Step 5:

Wait for configuring your wireless AP to be the security setting.

Wi-Fi Protected Setup - PIN method

Wi-Fi Protected Setup - PIN method

Please enter the following PIN code into your AP .

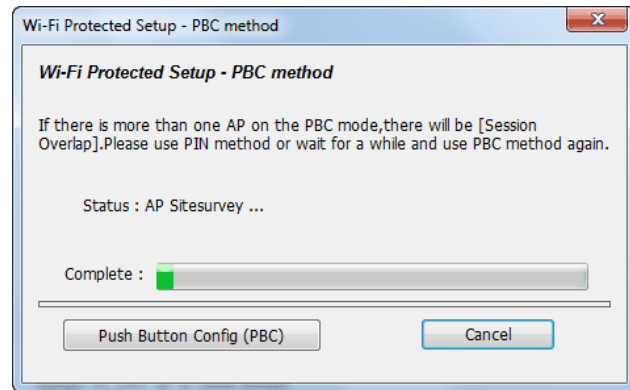
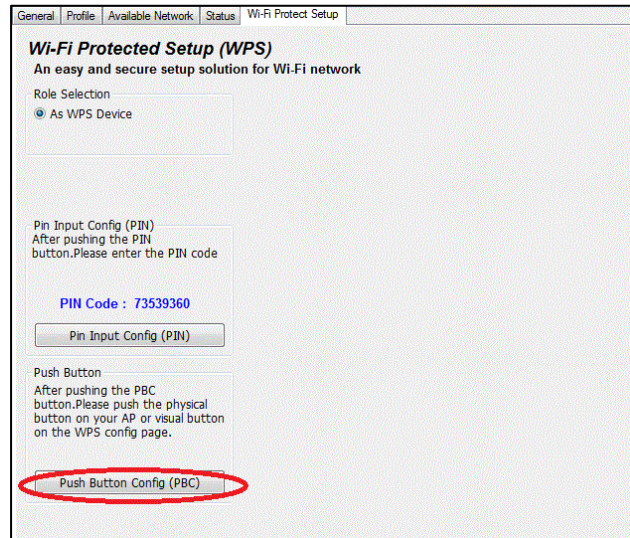
PIN Code : 14909856

Status : Initial WPS ...

■ PBC method:

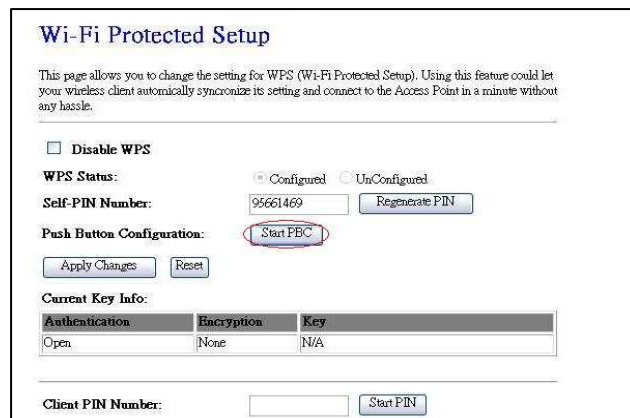
Step 1 :

Press “Push Button Config (PBC)” button



Step 2 :

Push the physical button on our AP or visual button on the WPS configuration page.



5.3 Virtual WiFi Setup (Use WiFi HotSpot feature under Windows 10 RS or later)

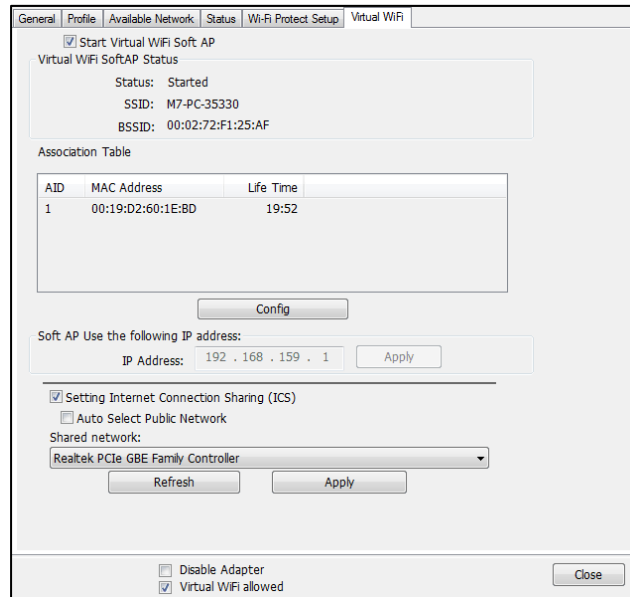
Step 1 :

Click “**Virtual WiFi allowed**” option to enable Virtual WiFi configuration / status page.



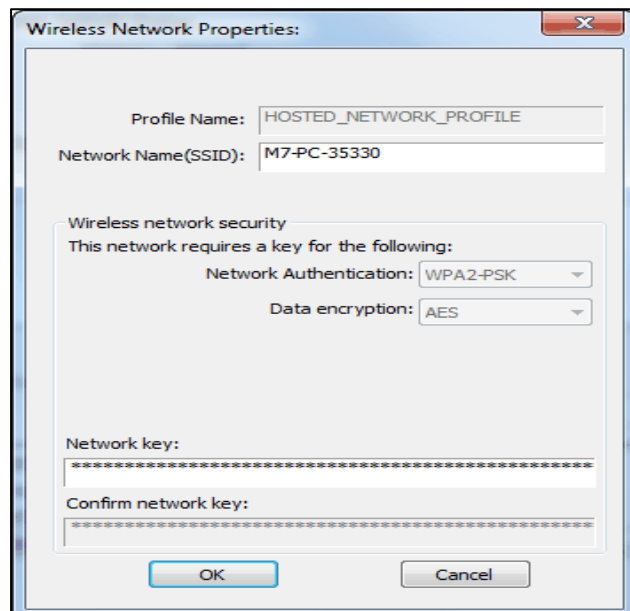
Step 2 :

Click “**Start Virtual WiFi Soft AP**” option to start



Step 3 :

Click “**Config**” button to configure Soft AP SSID and Security Key.



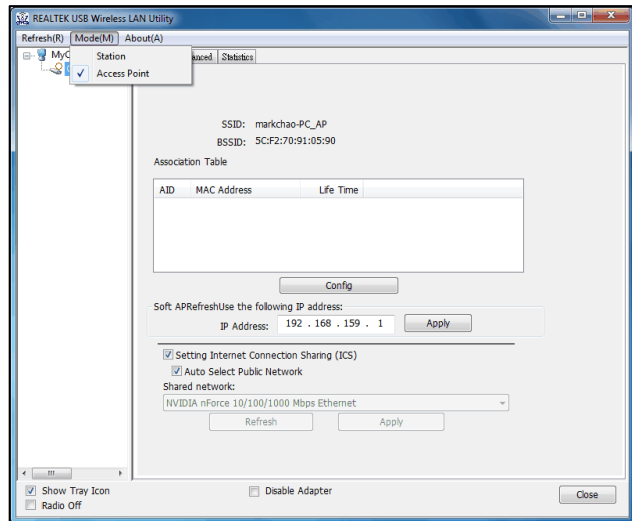
Step 4 :

To check “**Setting Internet Connection Sharing**” and “**Auto Select Public Network**” options to enable ICS. If setup up Shared Network manually, press “**Apply**” button to re-initialization ICS.

5.4 Access Point Mode (Applied to Windows 8.1 or Windows 7)

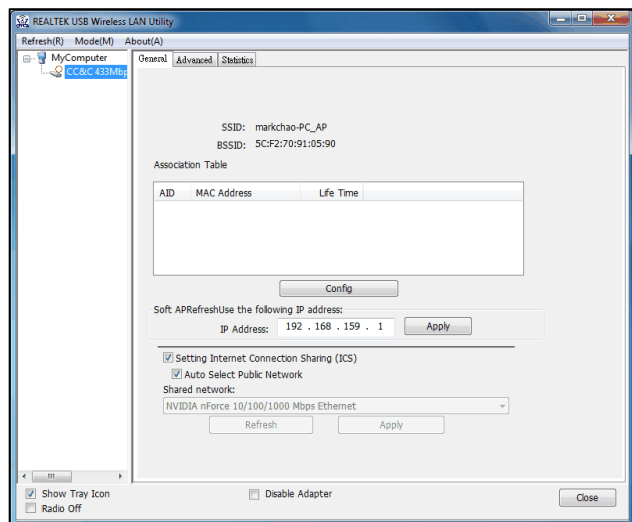
Step 1 :

Click “**Access Point**” option to enable proprietary soft AP configuration / status page in drop down menu of Mode(M).



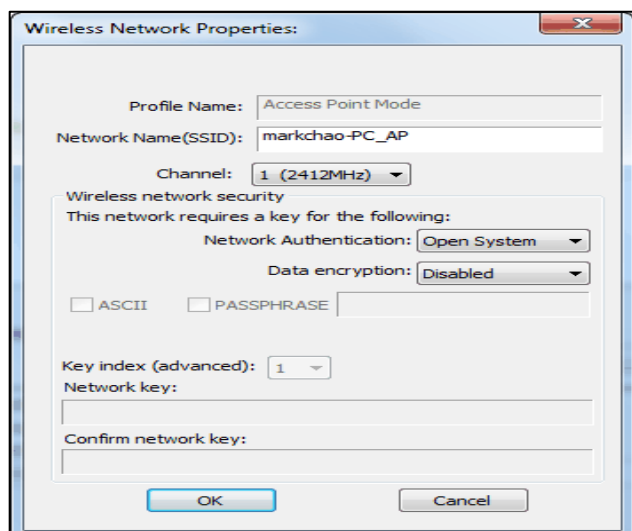
Step 2 :

“**General**” tab to show/set up soft AP status / configuration like connected wifi clients info / set wireless SSID and security with “**Config**” button is clicked or ip address and internet connection sharing via wired connection. Click “**Apply**” button after the ip address is be set.



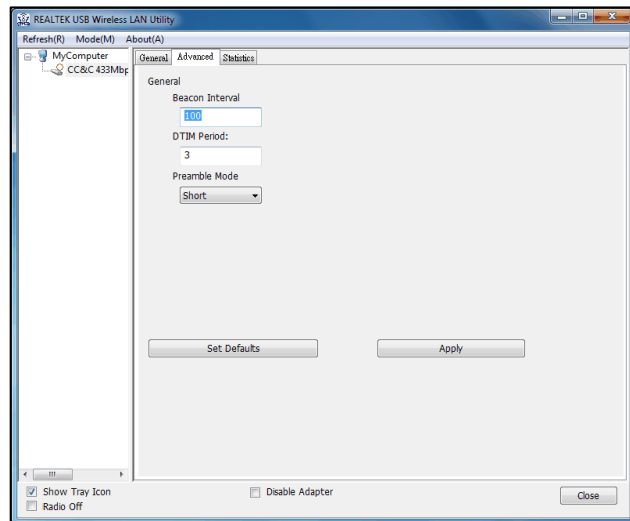
Step 2.1 :

“**Config**” is to set up wireless SSID, available channel and authentication / encryption keys settings. Click “**OK**”/”**Cancel**” to save/abort settings



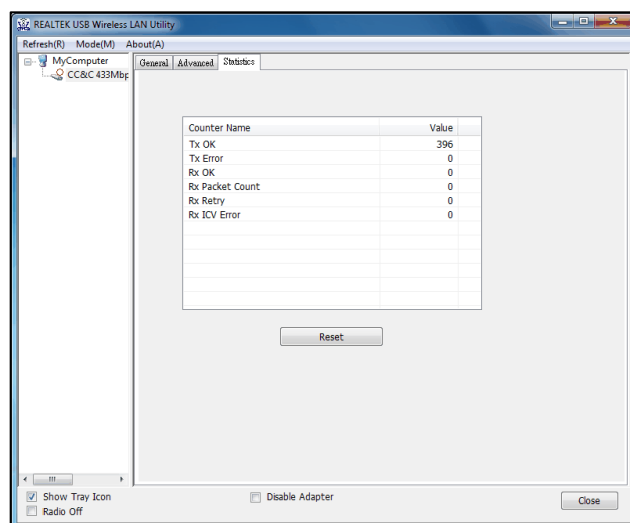
Step 3 :

“**Advanced**” tab to set up soft AP advanced configuration like Beacon Interval, DTIM Period and Preamble Mode. Keep default value if user does not understand its meaning. Click “**Set Defaults**” / “**Apply**” to save factory / custom settings.



Step 4 :

“**Statistics**” tab to show Tx/Rx relative data of soft AP. Click “**Reset**” to reset Tx / Rx counters



5.5 Bluetooth Setup

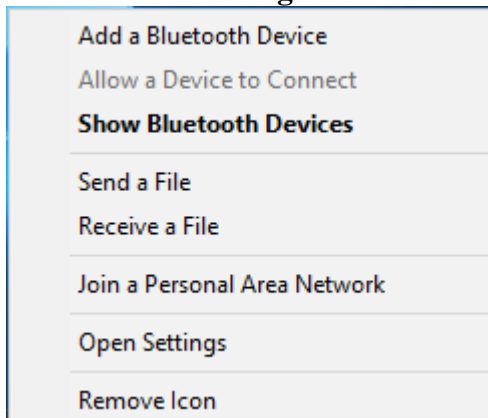
■ Windows 7 setup

Add a Bluetooth Enabled Device

To add a Bluetooth enabled device to your computer, you can use the **Bluetooth** icon located in the taskbar notification area or you can use a menu item in the **Bluetooth Devices** control panel.

NOTE: Before a Bluetooth device can be found, it must be within range and set to be discoverable. For information about how to set a particular device to be discoverable, check the user guide that came with the device.

To add a device using the Bluetooth icon:



Click the Bluetooth icon, click **Add a device**, and follow the onscreen instructions. The Add a device wizard handles the pairing process.

To add a device using the Bluetooth Devices control panel:

1. Double-click the Bluetooth icon, and then click **Show Bluetooth Devices**. Click **Add a device** and follow the onscreen instructions. The Add a
2. device wizard handles the pairing process.

NOTE:

- The setup process for a Bluetooth wireless keyboard involves pairing with your computer.

To conserve battery power, the Bluetooth wireless mouse, keyboard, or game controller goes to sleep after a specified period of inactivity. To wake up the mouse or game controller, move it around or click any of the

- controls. To wake up the keyboard, press any key.

After you have added a Bluetooth device to your computer, you can begin using the device.

To remove the device from your computer:

In **Bluetooth Devices**, select the device and click **Remove device**.

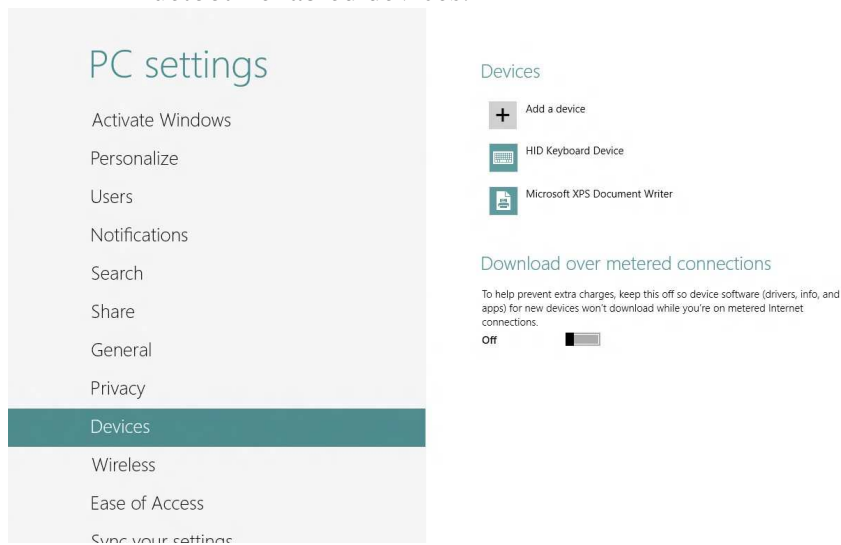
■ Windows 10 Setting

Use Bluetooth to facilitate wireless data transfers with other Bluetooth-enabled devices.

Pairing with other Bluetooth-enabled devices

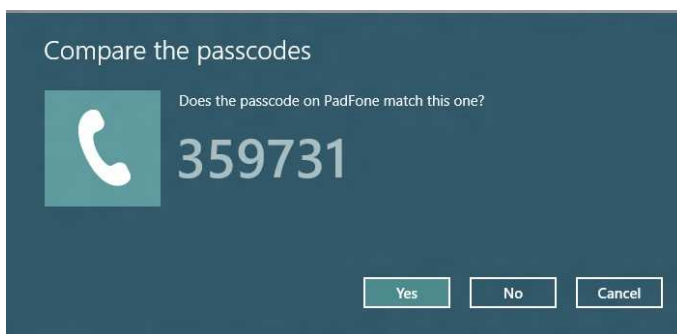
You need to pair your Notebook PC with other Bluetooth-enabled devices to enable data transfers. To do this, use your touchpad as follows:

- 1 Launch the Charms bar.
- 2 Tap then tap Change PC Settings.
- 3 Under PC Settings, select Devices then tap Add a Device to search for Bluetooth-enabled devices.



- 4 Select a device from the list. Compare the passcode on your Notebook PC with the passcode sent to your chosen device. If they are the same, tap yes to successfully pair your Notebook PC with the device.

NOTE: For some Bluetooth-enabled devices, you may be prompted to key in the passcode of your Notebook PC.





TECHNICAL SPECIFICATIONS

Model Name	CL-8821CU
Product Name	ac1x1+BT(Disabled) Dongle
Standard	IEEE 802.11b/g/n/a/ac/ e/ h/ i/ Bluetooth v2.1+EDR/ v3.0/ v3.0+HS/ v4.2
Data Transfer Rate	WLAN: 802.11b: 11, 5.5, 2, 1 Mbps 802.11g: 54, 48, 36, 24, 18, 12, 9, 6 Mbps 802.11n: MCS0 to 7 for HT20MHz, MCS0 to 7 for HT40MHz 802.11ac: MCS0 to 8 for HT20MHz, MCS0 to 9 for HT40MHz, NSS1 MCS0 to 9 for VHT80MH Bluetooth: Basic rate: 1Mbps Enhanced data rate: 2, 3 Mbps High Speed: 6, 9, 12, 18, 24, 36, 48, 54 Mbps
Modulation Method	WLAN: CCK, DQPSK, DBPSK, BPSK, QPSK, 16QAM, 64QAM, 256QAM Bluetooth: 8DPSK, $\pi/4$ DQPSK, GFSKFSK
Frequency Band	2.4GHz and 5GHz ISM Band
Spread Spectrum	IEEE 802.11b: CCK (Complementary Code Keying) IEEE 802.11g/n/a/ac: OFDM (Orthogonal Frequency Division Multiplexing) Bluetooth: FHSS (Frequency Hopping Spread Spectrum)
RF Output Power (tolerance ± 2dBm)	WLAN: 17dBm – 802.11b@CCK 11Mbps 15dBm – 802.11g@OFDM 54Mbps 13dBm – 802.11n@MCS7_HT20 13dBm – 802.11n@MCS7_HT40 13dBm – 802.11a@OFDM 54Mbps 9dBm – 802.11ac@NSS1 MCS9_BW20, BW40, BW80
Receiver Sensitivity	WLAN: -80dBm – 802.11b@11Mbps -70dBm – 802.11g@54Mbps -65dBm – 802.11n@MCS7_BW20 -64dBm – 802.11n@MCS7_BW40 -57dBm – 802.11ac@NSS1_MCS9_BW20 -54dBm – 802.11ac@NSS1_MCS9_BW40 -51dBm – 802.11ac@NSS1_MCS9_BW80
Antenna	PIFA Antenna x1
Security	WPA, WPA2
Power supply	USB / 5V
Operating Temperature	0 - 50° C ambient temperature
Storage Temperature	-10 ~ 70° C ambient temperature
Humidity	5 to 90 % maximum (non-condensing)
Dimension	Housing : 47.9 x 18 x 7.55mm (L x W x T) PCB VC: 25x12.1x0.8mm (L x W x T) PCB VD: 27x12.1x0.8mm (L x W x T)

The specification is subject to change without further notice

The channel identifiers, channel center frequencies, and regulatory domains of each 22-MHz-wide channel are shown in following Table.

Channel Identifier	Frequency (MHZ)	Regulatory Domains				
		Japan	ETSI	North America	Israel	Mexico
1	2412	●	●	●		
2	2417	●	●	●		
3	2422	●	●	●	●	
4	2427	●	●	●	●	
5	2432	●	●	●	●	
6	2437	●	●	●	●	
7	2442	●	●	●	●	
8	2447	●	●	●	●	
9	2452	●	●	●	●	
10	2457	●	●	●		●
11	2462	●	●	●		●
12	2467	●	●			
13	2472	●	●			
14	2484	●				

5GHz Bands descriptions as below

Freq.	Bands	Frequency
5 GHz	UNII1	5.15 -5.25 GHz
	UNII2	5.25 -5.35 GHz
	Midband	5.47 -5.725 GHz
	UNII3	5.725 -5.805 GHz
	ISM	5.725 -5.850 GHz
	DSRC	5.850 -5.925 GHz
	Japan 11j and US public safety	4.90 -5.1 GHz



TROUBLESHOOTING

Symptom :

The LED is off.

Remedy :

Make sure the PC Card is inserted properly. Otherwise contact your vendor.

Symptom :

The LED is always on not blinking.

Remedy :

Make sure that you have installed the driver from attached CD. Otherwise contact your vendor.

Symptom :

The LED is blinking but the PC Card icon does not appear in your icon tray.

Remedy :

Make sure that you have installed the Utility from the attached CD.

Symptom :

The PC Card is linking, but can't share files with others.

Remedy :

Make sure the **file and printer sharing** function is enabled. You can enable the function by checking the icon of **My Computer -> Control Panel -> Network -> file and printer sharing -> I want to be able to give others to access to my files.**

Symptom :

Slow or poor performance under AP mode

Remedy :

Try to select another channel for the communicating group or move your device closer to the Access Point.



IEEE 802.11 Standard

The IEEE 802.11 Wireless LAN standards subcommittee, which is formulating a standard for the industry.

Access Point

An internetworking device that seamlessly connects wired and wireless networks together.

Ad Hoc

An Ad Hoc wireless LAN is a group of computers, each with a WLAN adapter, connected as an independent wireless LAN. Ad Hoc wireless LAN is applicable at a departmental scale for a branch or SOHO operation.

BSSID

A specific Ad Hoc LAN is called a Basic Service Set (BSS). Computers in a BSS must be configured with the same BSSID.

DHCP

Dynamic Host Configuration Protocol - a method in which IP addresses are assigned by server dynamically to clients on the network. DHCP is used for Dynamic IP Addressing and requires a dedicated DHCP server on the network.

Direct Sequence Spread Spectrum

This is the method the wireless cards use to transmit data over the frequency spectrum. The other method is frequency hopping. Direct sequence spreads the data over one frequency range (channel) while frequency hopping jumps from one narrow frequency band to another many times per second.

ESSID

An Infrastructure configuration could also support roaming capability for mobile workers. More than one BSS can be configured as an Extended Service Set (ESS). Users within an ESS could roam freely between BSSs while served as a continuous connection to the network wireless stations and Access Points within an ESS must be configured with the same ESSID and the same radio channel.

Ethernet

Ethernet is a 10/100Mbps network that runs over dedicated home/office wiring. Users must be wired to the network at all times to gain access.

Gateway

A gateway is a hardware and software device that connects two dissimilar

systems, such as a LAN and a mainframe. In Internet terminology, a gateway is another name for a router. Generally a gateway is used as a funnel for all traffic to the Internet.

IEEE

Institute of Electrical and Electronics Engineers
Infrastructure

An integrated wireless and wired LAN is called an Infrastructure configuration. Infrastructure is applicable to enterprise scale for wireless access to central database, or wireless application for mobile workers.

ISM Band

The FCC and their counterparts outside of the U.S. have set aside bandwidth for unlicensed use in the so-called ISM (Industrial, Scientific and Medical) band. Spectrum in the vicinity of 2.4 GHz, in particular, is being made available worldwide. This presents a truly revolutionary opportunity to place convenient high-speed wireless capabilities in the hands of users around the globe.

Local Area Network (LAN)

A LAN is a group of computers, each equipped with the appropriate network adapter card connected by cable/air, that share applications, data, and peripherals. All connections are made via cable or wireless media, but a LAN does not use telephone services. It typically spans a single building or campus.

Network

A network is a system of computers that is connected. Data, files, and messages can be transmitted over this network. Networks may be local or wide area networks.

Protocol

A protocol is a standardized set of rules that specify how a conversation is to take place, including the format, timing, sequencing and/ or error checking.

SSID

A Network ID unique to a network. Only clients and Access Points that share the same SSID are able to communicate with each other. This string is case-sensitive.

Static IP Addressing

A method of assigning IP addresses to clients on the network. In networks with Static IP address, the network administrator manually assigns an IP address to each computer. Once a Static IP address is assigned, a computer

uses the same IP address every time it reboots and logs on to the network, unless it is manually changed.

Temporal Key Integrity Protocol (TKIP)

The Temporal Key Integrity Protocol, pronounced tee-kip, is part of the IEEE 802.11i encryption standard for wireless LANs. TKIP is the next generation of WEP, the Wired Equivalency Protocol, which is used to secure 802.11 wireless LANs. TKIP provides per-packet key mixing, a message integrity check and a re-keying mechanism, thus fixing the flaws of WEP.

Transmission Control Protocol / Internet Protocol (TCP/IP)

TCP/IP is the protocol suite developed by the Advanced Research Projects Agency (ARPA). It is widely used in corporate Internet works, because of its superior design for WANs. TCP governs how packet is sequenced for transmission the network. The term "TCP/IP" is often used generically to refer to the entire suite of related protocols.

Transmit / Receive

The wireless throughput in Bytes per second averaged over two seconds.

Wi-Fi Alliance

The Wi-Fi Alliance is a nonprofit international association formed in 1999 to certify interoperability of wireless Local Area Network products based on IEEE 802.11 specification. The goal of the Wi-Fi Alliance's members is to enhance the user experience through product interoperability. The organization is formerly known as WECA.

Wi-Fi Protected Access (WPA)

The Wi-Fi Alliance put together WPA as a data encryption method for 802.11 wireless LANs. WPA is an industry-supported, pre-standard version of 802.11i utilizing the Temporal Key Integrity Protocol (TKIP), which fixes the problems of WEP, including using dynamic keys.

Wide Area Network (WAN)

A WAN consists of multiple LANs that are tied together via telephone services and / or fiber optic cabling. WANs may span a city, a state, a country, or even the world.

Wired Equivalent Privacy (WEP)

Now widely recognized as flawed, WEP was a data encryption method used to protect the transmission between 802.11 wireless clients and APs. However, it used the same key among all communicating devices. WEP's problems are well-known, including an insufficient key length and no automated method for distributing the keys. WEP can be easily

cracked in a couple of hours with off-the-shelf tools.

Wireless LAN (WLAN)

A wireless LAN does not use cable to transmit signals, but rather uses radio or infrared to transmit packets through the air. Radio Frequency (RF) and infrared are the commonly used types of wireless transmission. Most wireless LANs use spread spectrum technology. It offers limited bandwidth, usually under 11Mbps, and users share the bandwidth with other devices in the spectrum; however, users can operate a spread spectrum device without licensing from the Federal Communications Commission (FCC).

Fragment Threshold

The proposed protocol uses the frame fragmentation mechanism defined in IEEE 802.11 to achieve parallel transmissions. A large data frame is fragmented into several fragments each of size equal to fragment threshold. By tuning the fragment threshold value, we can get varying fragment sizes. The determination of an efficient fragment threshold is an important issue in this scheme. If the fragment threshold is small, the overlap part of the master and parallel transmissions is large. This means the spatial reuse ratio of parallel transmissions is high. In contrast, with a large fragment threshold, the overlap is small and the spatial reuse ratio is low. However high fragment threshold leads to low fragment overhead. Hence there is a trade-off between spatial re-use and fragment overhead.

Fragment threshold is the maximum packet size used for fragmentation. Packets larger than the size programmed in this field will be fragmented. If you find that your corrupted packets or asymmetric packet reception (all send packets, for example). You may want to try lowering your fragmentation threshold. This will cause packets to be broken into smaller fragments. These small fragments, if corrupted, can be resent faster than a larger fragment. Fragmentation increases overhead, so you'll want to keep this value as close to the maximum value as possible.

RTS (Request To Send) Threshold

The RTS threshold is the packet size at which packet transmission is governed by the RTS/CTS transaction. The IEEE 802.11-1997 standard allows for short packets to be transmitted without RTS/CTS transactions. Each station can have a different RTS threshold. RTS/CTS is used when the data packet size exceeds the defined RTS threshold. With the CSMA/CA transmission

mechanism, the transmitting station sends out an RTS packet to the receiving station, and waits for the receiving station to send back a CTS (Clear to Send) packet before sending the actual packet data. This setting is useful for networks with many clients. With many clients, and a high network load, there will be many more collisions. By lowering the RTS threshold, there may be fewer collisions, and performance should improve. Basically, with a faster RTS threshold, the system can recover from problems faster. RTS packets consume valuable bandwidth, however, so setting this value too low will limit performance.

Beacon Interval

In addition to data frames that carry information from higher layers, 802.11 includes management and control frames that support data transfer. The beacon frame, which is a type of management frame, provides the "heartbeat" of a wireless LAN, enabling stations to establish and maintain communications in an orderly fashion. Beacon Interval represents the amount of time between beacon transmissions. Before a station enters power save mode, the station needs the beacon interval to know when to wake up to receive the beacon (and learn whether there are buffered frames at the access point).

Preamble Type

There are two preamble types defined in IEEE 802.11 specification. A long preamble basically gives the decoder more time to process the preamble. All 802.11 devices support a long preamble. The short preamble is designed to improve efficiency (for example, for VoIP systems). The difference between the two is in the Synchronization field. The long preamble is 128 bits, and the short is 56 bits.

WPA2

It is the second generation of WPA. WPA2 is based on the final IEEE 802.11i amendment to the 802.11 standard.

Temporal Key Integrity Protocol (TKIP)

The Temporal Key Integrity Protocol, pronounced tee-kip, is part of the IEEE 802.11i encryption standard for wireless LANs. TKIP is the next generation of WEP, the Wired Equivalency Protocol, which is used to secure 802.11 wireless LANs. TKIP provides per-packet key mixing, a message integrity check and a re-keying mechanism, thus fixing the flaws of WEP.

802.1x Authentication

802.1x is a framework for authenticated MAC-level access control, defines Extensible Authentication Protocol (EAP) over LANs (WAPOL). The standard encapsulates and leverages much of EAP, which was defined for dial-up authentication with Point-to-Point Protocol in RFC 2284.

Beyond encapsulating EAP packets, the 802.1x standard also defines EAPOL messages that convey the shared key information critical for wireless security.

Advanced Encryption Standard (AES)

Security issues are a major concern for wireless LANs, AES is the U.S. government's next-generation cryptography algorithm, which will replace DES and 3DES.

FCC Warning

This device complies with Part 15 of the FCC Rules. Operation is subject to the following two conditions:

(1) This device may not cause harmful interference, and (2) this device must accept any interference received, including interference that may cause undesired operation.

NOTE 1: This equipment has been tested and found to comply with the limits for a Class B digital device, pursuant to part 15 of the FCC Rules. These limits are designed to provide reasonable protection against harmful interference in a residential installation. This equipment generates, uses and can radiate radio frequency energy and, if not installed and used in accordance with the instructions, may cause harmful interference to radio communications. However, there is no guarantee that interference will not occur in a particular installation. If this equipment does cause harmful interference to radio or television reception, which can be determined by turning the equipment off and on, the user is encouraged to try to correct the interference by one or more of the following measures:

- Reorient or relocate the receiving antenna.
- Increase the separation between the equipment and receiver.
- Connect the equipment into an outlet on a circuit different from that to which the receiver is connected.
- Consult the dealer or an experienced radio/TV technician for help.

NOTE 2: Any changes or modifications to this unit not expressly approved by the party responsible for compliance could void the user's authority to operate the equipment.

FCC Radiation Exposure Statement:

This equipment complies with FCC radiation exposure limits set forth for an uncontrolled environment. End users must follow the specific operating instructions for satisfying RF exposure compliance.

Note 1: This module certified that complies with RF exposure requirement under mobile or fixed condition, this module is to be installed only in mobile or fixed applications.

A mobile device is defined as a transmitting device designed to be used in other than fixed locations and to generally be used in such a way that a separation distance of at least 20 centimeters is normally maintained between the transmitter's radiating structure(s) and the body of the user or nearby persons. Transmitting devices designed to be used by consumers or workers that can be easily re-located, such as wireless devices associated with a personal computer, are considered to be mobile devices if they meet the 20 centimeter separation requirement.

A fixed device is defined as a device is physically secured at one location and is not able to be easily moved to another location.

Note 2: Any modifications made to the module will void the Grant of Certification, this module is limited to OEM installation only and must not be sold to end-users, end-user has no manual instructions to remove or install the device, only software or operating procedure shall be placed in the end-user operating manual of final products.

Note 3: Additional testing and certification may be necessary when multiple modules are used.

Note 4: The module may be operated only with the antenna with which it is authorized. Any antenna that is of the same type and of equal or less directional gain as an antenna that is authorized with the intentional radiator may be marketed with, and used with, that intentional radiator.

Note 5: To ensure compliance with all non-transmitter functions the host manufacturer is responsible for ensuring compliance with the module(s) installed and fully operational. For example, if a host was previously authorized as an unintentional radiator under the Supplier's Declaration of Conformity procedure without a transmitter certified module and a module is added, the host manufacturer is responsible for ensuring that after the module is installed and operational the host continues to be compliant with the Part 15B unintentional radiator requirements. Since this may depend on the details of how the module is integrated with the host, LM Technologies Ltd. shall provide guidance to the host manufacturer for compliance with the Part 15B requirements.

Note 6: FCC ID label on the final system must be labeled with "Contains FCC ID: VVXLM813" or "Contains transmitter module FCC ID: VVXLM813".