

BAC-200D USER GUIDE

FCC Statement This device complies with Part 15 of the FCC Rules. Operation is subject to the following two conditions: (1) this device may not cause harmful interference, and (2) this device must accept any interference received, including interference that may cause undesired operation. Changes or modifications not expressly approved by the party responsible for compliance could void the user's authority to operate the equipment.

LIMITED LIABILITY

Manufacturers, importers and sellers will not take responsibility for the accident injury or the damage caused by incorrect operation.

This handbook contains the existing functions of the product. More functions or updated technology will be added in the future. Please understand that all of these changes will be no need to inform you.

SAFE DRIVING

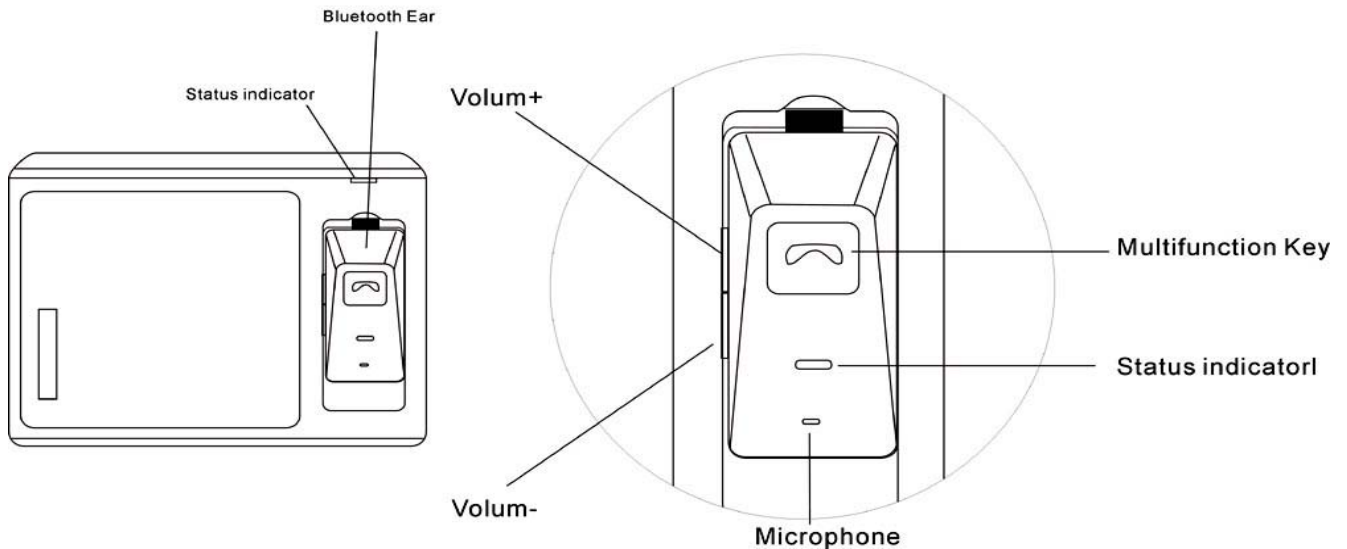
Using mobile phone while driving may distract the driver's attention, thereby increasing the possibility of accidents.

To use the mobile phone while driving, please try to reduce the talking time, no record and no read. Before answering the call, please observe the surrounding environment, such as bad weather (storms, fog, etc.). While traffic peak, baby in car or difficulties in vehicle, please leave the road and park the car before calling or answering the phone. Please remember that answering the phone is not the most important, safety is the most important! Please abide the local law.

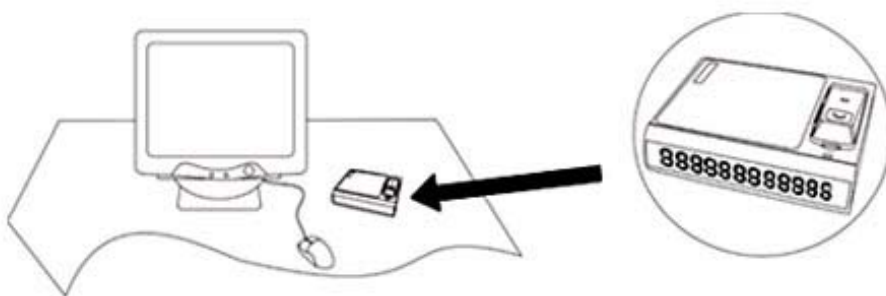
TABLE OF CONTENT

Overview
Installation
Turning on and off
Pairing
Voice dialing
Last number redialing
Answering and ending a call
Rejecting a call
Answer waiting call
Adjusting the volume
Display mode selecting
Switching conversation between phone and CarKit
Charging

OVERVIEW

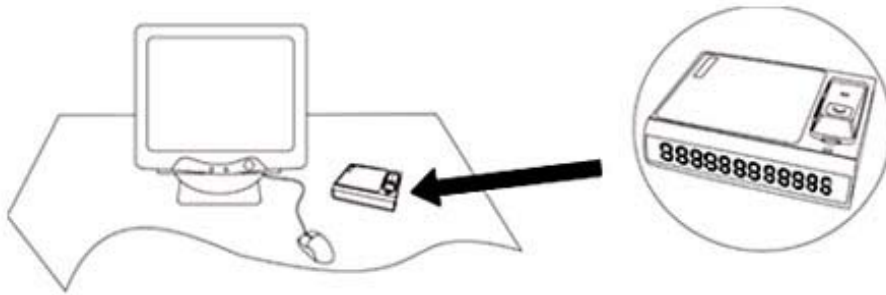


1. Bluetooth Earpiece: Independent Bluetooth Earpiece. Take it up to use as a general Bluetooth earpiece. Put it back, the host becomes a carkit.
2. Multifunction Key: press this key to: answer a call; end a call; voice dialing; last number redialing; reject a call; call waiting etc. (details as bellow)
3. Microphone: voice transmitter.
4. Status indicator: indicate the device's status on calls, pairing etc. (details as below).
5. Volume -: decrease volume and switch display mode.
6. Volume +: increase the volume.
7. Charging indicator: Red indicator is on during charging and Green indicator is on after charged.
8. LED display panel: display caller ID and information prompt.
9. Volume adjusting (host): control the volume of the device.
10. DC jack: use the provided charger to charge the device.
11. Clip: the device can be installed on the sun visor by the clip.



Installation:

- ① The device can be placed on the table.



- ② Clip the device on the sun visor by the clip.



- ③ Display panel towards to the rearview mirror



Turning on and off

Press multifunction key and hold for 6 seconds. The display panel displays 8888 8888 8888 with a Do Da confirmation beep. The blue LED starts to flash. The device can automatically connect to the last used mobile after powering on.

Press multifunction key and hold for 8 seconds. The RED indicator flashes for 4 times and the display panel displays OFF with a Da Do confirmation beep indicating the device is off.

Pairing

Before using the device, you must pair the device with mobile phone firstly.

Step	STATE/RESULT
1、 Press multifunction key and long hold until RED and BLUE indicator flashes alternately.	Blue and RED indicator flashes alternately.
2、 Activate your mobile phone bluetooth function. (Refer to the mobile phone's User Guide for details).	A list of enabled devices in range will show.
3、 Select BAC-200D from the list on the mobile phone.	Pair the device.
4、 Enter the password "0000" to confirm the pairing process.	The device displays PAIRrEd.
5、 Pairing is now completed and the device can automatically connect to mobile. (such as Nokia)	The device displays CONNEctED and Blue LED flashes every 5 seconds.
6、 Pairing is now complete and the device cannot automatically connect to mobile. (Such as Siemens)	As above.

Note: After pairing, some mobile phones are still not in connection to the device until an incoming or outgoing call is made. In this case, although you can still make the call, the caller ID may not be displayed on the mirror and the blue LED flashes every 5 seconds.

Voice Dialing

Step	Status/Result
1 、 Make sure that the device has established connection with your mobile.	Blue LED flashes every 5 seconds.
2、 Press multifunction key once	Blue LED flashes every 5 seconds. The mirror displays VOICEdIAL. The device sends voice dialing prompt.
3、 Bring out the pre-recorded voice tag.	Blue LED flashes every 5 seconds. The device repeats the voice tag. The number will be dialed.

Note: This function depends on the mobile phone. Some mobile phones don't support this function. Please refer to the User Guide of your mobile phone. Ensure a voice tag has stored in the mobile phone before using this function.

Last Number Redialing

Step	Status/Result
1、 Make sure that the device has established connection with your mobile phone.	Blue LED flashes every 5 seconds.
2、 Press multifunction key twice quickly	Blue LED flashes every 5 seconds. The mirror displays rEdIAL. The device will dial out the last number.

Note: This function depends on the feature of the mobile phone. Please refer to the User Guide of the mobile phone.

Answering and Ending a Call

Step	Status/Result
1、Make sure that the device has established connection with your mobile.	Blue LED flashes every 5 seconds.
2、Incoming call	Blue LED flashes every 5 seconds. The mirror displays Caller ID and rings.
3、Press multifunction key once	Blue LED flashes for 3 seconds every 3 seconds.
4、Press multifunction key again during conversation.	Blue LED flashes every 5 seconds. The mirror displays HAN9UP.

Rejecting a Call

Step	Status/Result
1、Make sure that the device has established connection with your mobile.	Blue LED flashes every 5 seconds.
2、Incoming call	Blue LED flashes every 5 seconds. The mirror displays Caller ID and rings.
3、Press multifunction key twice quickly	Blue LED is on. The mirror displays rEJECT.

Answering Waiting Call

Step	Status/Result
1、A call is active(A)	Blue LED is on.
2、The second call comes(B)	Blue LED is on. The mirror displays the second caller ID and rings.
3、Press multifunction key and hold for 3 seconds	Blue LED is on. The mirror displays ACCEPt Answering the second call and A call is held.
4、Press multifunction key and hold for 3 seconds again	Blue LED is on. The mirror displays ACCEPt Switch between the two calls.
5、Press multifunction key once quickly	Blue LED is on. The mirror displays REStORE. To terminate a call and restore the other call.

Note: Call waiting service may not be available on all networks. Contact your network operator for more information.

Volume Adjusting

1. Adjust the volume of the bluetooth earpiece

Press VOLUME+ to increase the volume, and press VOLUME- to decrease the volume.

2. Adjust the volume of the host

Turn the volume knob to change the volume.

Display mode selecting

Press VOLUME- and hold for 3 seconds, the red indicator flashes once.

“NORMAL” displayed on the display panel indicates NORMAL display is restored.

“MIRROR” displayed on the display panel and the red indicator flashing twice indicates MIRROR display is set, so that you shall put the display panel towards the rearview mirror.

“SUNVISOR” displayed on the display panel and the red indicator flashing three times indicates SUNVISOR display is set, so that the device must be clipped to the sun visor.

This function can be stored in memory, and won't disappear after powering off.

Switch between the three kinds of display mode is available by pressing VOLUME- key and hold.

Switching Conversation Between Phone and CarKit

Step	State/Result
1、 Press multifunction key and hold for 3 seconds during conversation	The device displays trANSFEr. Blue LED starts to flash. Switch the voice from the device to mobile.
2、 Press multifunction key once	The device displays CONNECtEd. Blue LED is on. Switch the voice from mobile to the device.

Charging

While standing-by or during the conversation, the device displays “LO” and beeps to indicate that battery need charging. Please use the provided charger to charge the device. The red LED is on during charging. After charged, the red LED is off and green LED is on. Full charging period is about 3 hours (depending on the capacity of the battery).

Step

1, Plug the charger into DC socket on the device.
2, Plug the other end into the cigarette light socket in the car.
3, Red LED is on during charging
4, Green LED is on after charged