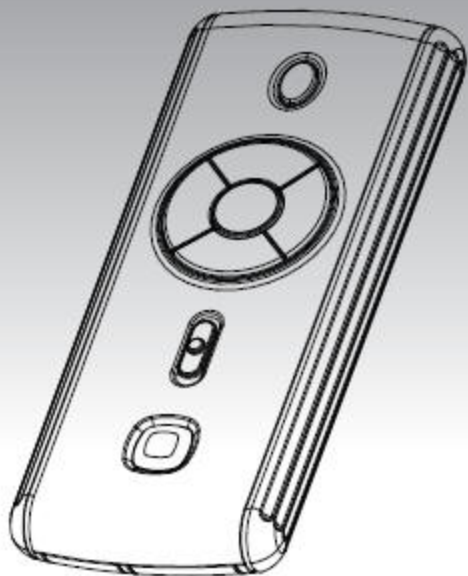


# USER GUIDE

## Wireless Mobile Presenter

GA-6258



**SWISSGEAR**  
BY WENGER

FROM THE MAKER OF THE GENUINE SWISS ARMY KNIFE™

## THANK YOU

Thank you for purchasing the GA-6258 SwissGear Wireless Mobile Presenter. This manual will provide you with what you will need to know about your new presenter.

## THIS PACKAGE INCLUDES

- One GA-6258 Wireless Mobile Presenter
- One USB Storable Receiver
- User's Manual
- 2 Coin Battery



## MANUAL CONTENTS

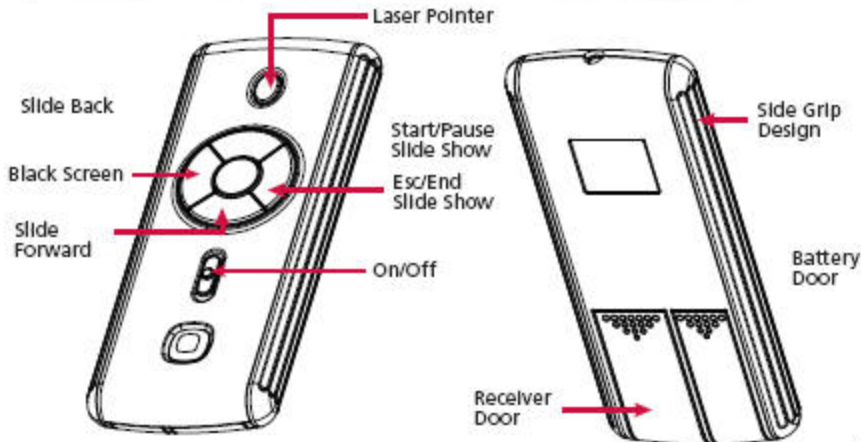
Features .....	3
Presenter Functions .....	3
Overview .....	4
Hardware Installation .....	4
Installation of Batteries .....	4
Connecting the Presenter Receiver .....	5
Low Battery Indication .....	5
Synchronization .....	6
Storing of the Receiver when traveling .....	6
Troubleshooting .....	7
Technical Specifications .....	7
FCC Compliance Statement .....	8
Product Registration .....	9
1 Year Limited Warranty .....	9
Tech Support/Laser Warning Statement .....	10

## FEATURES

- PC - MAC USB Compatible
- 100 Feet Wireless Connection (Max range)
- Low Power consumption - 2 Coin Batteries
- Mini USB receiver snaps into the bottom of presenter to prevent loss, easy travel
- Presenter Functions: Start/Pause Slide Show, Esc/End Slide Show, Slide Forward/Back, Black Screen, and integrated laser pointer
- Ergonomic side grip design for comfortable hand control
- Compatible with USB V1.1 low-speed & USB 2.0 High Speed protocol

**NOTE:** The presenter buttons on this product are not programmable and use the default functions of the operating system for Windows or Mac. Also for Track Forward and Back use the mouse function to select the desired track and then double click on the "L" button.

## FUNCTIONS



## OVERVIEW

The SwissGear by Wenger® Multimedia Wireless Mobile Presenter features a leading edge presenter technology in a high quality design. You to have instant presentation and multimedia functions: Start/Pause Slide Show, Esc/End Slide Show, Slide Forward/Back, Black Screen, Play/Pause, Stop, Volume Up, Volume Down, Track Forward, Track Back, Mouse control and integrated laser pointer, On/Off to highlight key points in your presentation. The wireless connectivity is state of the art to provide hassle free connectivity (up to 100 feet max range). The high end design allows for the USB receiver to connect to the bottom of the presenter so you will never lose the receiver. All this in an ergonomic design that is comfortable and easy to use, even while traveling.

## HARDWARE INSTALLATION

### Battery Installation - PC & Mac (1):

1. Remove the battery compartment cover.
2. Install batteries with the positive (+) side up & negative (-) side down.
3. Replace battery compartment cover.
4. Turn on presenter.

1

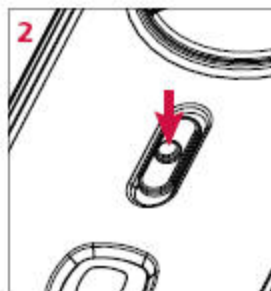
### Battery Low Indication:

When the voltage level of the battery goes down under the preset level, the presenter functions may become sluggish or no function. There is no battery indicator LED on this product. Although the presenter will still operate for a while, the user, at this time, should have a new set of batteries ready for replacement.

**NOTE:** If the presenter is not in use or moved it will go into sleep mode (still draining power from the battery), once the presenter is moved, it will wake up. To cut off the power of the presenter to not drain the batteries, turn off the presenter by using the OFF button (2).

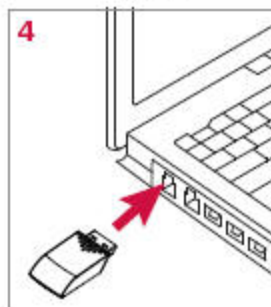
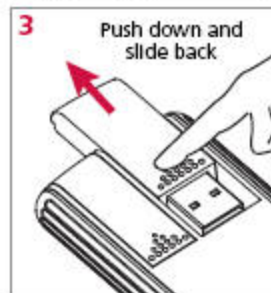
### Battery Low Indication:

When the voltage level of the battery goes down under the preset level, the presenter functions may become sluggish or no function. There is no battery indicator LED on this product. Although the presenter will still operate for a while, the user, at this time, should have a new set of batteries ready for replacement. **NOTE: If the presenter is not in use or moved it will go into sleep mode (still draining power from the battery), once a button is pressed, it will wake up. To cut off the power of the presenter to not drain the batteries, turn off the presenter by using the ON/OFF button (2).**



### Connecting the Presenter Receiver:

Remove the USB Receiver from the presenter. **(3)** Plug in the USB Receiver to any available USB port or hub connected to your computer. **(4)** Windows will now detect the presenter and install the required drivers automatically. Your presenter is now ready to be used. **NOTE: There is a laser pointer on this presenter.** (CAUTION: Do not point red LASER BEAM into your eyes or anyone else eyes, do not look directly into the RED LASER BEAM at anytime. Keep away from young children. See Safety Notice on back of this manual)



## Synchronization:

**NOTE:** Windows should have already installed the drivers and recognized the presenter, if not or the presenter is in sleep mode, click the presenter button once to wake it up. If this does not work you may need to do a manual reconnect or change the wireless connection channel.

### To change the wireless connection channel:

Unplug and replug the USB receiver from the USB port. Windows will detect the presenter and install the required drivers automatically. Your presenter has now changed channels and is ready to be used. If for some reason, the synchronization is not successful please:

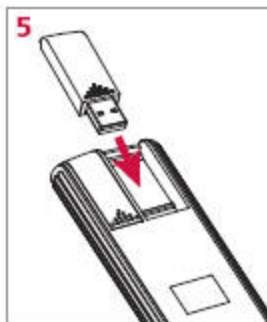
- Remove the batteries and unplug the receivers
- Wait for 20 seconds and then try the above scenario again.

**NOTE:** During normal use, please make sure that the presenter is no more than 100 ft. away from the receiver in order to have reliable connection.

### Storing of the Receiver when traveling:

For added easy travel and loss prevention of the receiver, you can store the USB receiver on the bottom of the presenter receiver storage area. **(5)**

**IMPORTANT:** Before boarding any aircraft, turn off or remove the batteries from the wireless presenter. The wireless presenter can transmit radio frequency energy, much like a cell phone, whenever batteries are installed and the presenter is activated either by touch or button press. The presenter can transmit RF energy whenever batteries are installed and product is on.





## TROUBLESHOOTING

### **Presenter does not function.**

- Check the USB receiver and make sure it is firmly inserted into the USB port of the computer.
- If this does not work, restart the computer again and follow the instructions for *Connecting the Presenter Receiver* and *Synchronization* sections of this manual.

### **Presenter is slow or sluggish in movement.**

- Batteries could be low in power and need to be replaced.
- There could be interference in the area of the product. Unplug and replug the USB receiver to change channels.
- Please note, there is no low battery indicator on this presenter.

## TECHNICAL SPECIFICATIONS

PC - MAC USB Compatible

Wireless Specification: 433MHz - 100 feet max range

Storable Mini USB receiver

Presenter Functions: Start/End Slide Show, Slide Forward/Back, Black Screen, and integrated laser pointer

Compatible with USB V1.1 low-speed & USB 2.0 High Speed protocol

Operating Systems: MS Windows 98/SE/ME, 2000, XP/Vista, Mac 9.0 & above

Receiver Power: USB Per-Port Current: Self-Power 500mA

Presenter Power: 2 Coin Cell Alkaline Batteries

Dimension: (LxWxH): 106mm x 44mm x 13mm

Weight: 2 Oz

**NOTE:** Please note that the presenter buttons on this product are not programmable and use the default functions of the operating system for Windows or Mac.

## FCC COMPLIANCE STATEMENT

This equipment has been tested and found to comply with the limits for a Class B digital device, pursuant to Part 15 of the FCC Rules. These limits are designed to provide reasonable protection against harmful interference in a residential installation. This equipment generates, uses and can radiate radio frequency energy and, if not installed or used in accordance with the instructions, may cause harmful interference to radio communications. However, there is no guarantee that interference will not occur in television reception, which can be determined by turning the equipment off and on. The user is encouraged to try and correct the interference by one or more of the following measures:

- (1) Reorient or relocate the receiving antenna.
- (2) Increase the separation between the equipment and the receiver.
- (3) Connect the equipment into an outlet on a circuit different from that to which the receiver is connected.
- (4) Consult the dealer or an experienced technician for help.



Tested To Comply With FCC Standards  
FOR HOME OR OFFICE USE

This device complies with Part 15 of the FCC Rules. Operation is subject to the following two conditions:

- (1) This device may not cause harmful interference, and
- (2) this device must accept any interference received, including interference that may cause undesired operation.

### IMPORTANT NOTE: FCC Radiation Exposure Statement:

This equipment complies with FCC RF radiation exposure limits set forth for an uncontrolled environment. To maintain compliance with FCC RF exposure compliance requirements, please avoid direct contact to the transmitting antenna during transmitting.

NOTE: THE MANUFACTURER IS NOT RESPONSIBLE FOR ANY RADIO OR TV INTERFERENCE CAUSED BY UNAUTHORIZED MODIFICATIONS TO THIS EQUIPMENT. SUCH MODIFICATIONS COULD VOID THE USERS AUTHORITY TO OPERATE THE EQUIPMENT.



## REGISTRATION & WARRANTY

### PRODUCT REGISTRATION

Avenues suggests you register your SWISSGEAR accessory shortly after your purchase. To register your SWISSGEAR accessory, please go to:

<http://www.AvenuesUSA.com/registration>

### LIMITED WARRANTY:

This product is warranted to be free from manufacturing defects for a period of 1 year from the original date of consumer purchase. This warranty is limited to the repair or replacement of this product only and does not extend to consequential or incidental damage to other products that may be used with this unit. This warranty is in lieu of all other warranties expressed or implied. Some states do not allow limitations on how long an implied warranty lasts or permit the exclusion or limitation of incidental or consequential damages, so the above limitations may not apply to you. This warranty gives you specific rights, and you may also have other rights which vary from state to state. If unit should prove defective within the warranty period, contact us with your proof of purchase/date at the following:

SWISSGEAR Products, c/o AVENUES IN LEATHER

750 Hope Road, Tinton Falls, NJ 07724

or call toll free: 1-877-SWS-GEAR (797-4327)

[www.WengerNA.com](http://www.WengerNA.com) [contactus@AvenuesUSA.com](mailto:contactus@AvenuesUSA.com)

©2007 Avenues In Leather, Inc. Avenues is an authorized licensee of Wenger Licensing. Avenues/Wenger are not responsible for technical or editorial errors or omissions contained herein. The information contained herein is subject to change without notice. Only warranties for SWISSGEAR products are set forth in accompanying warranty statements.

For technical assistance please dial:

**1-877-750-TECH**

Or email us at: [TechSupport@AvenuesUSA.com](mailto:TechSupport@AvenuesUSA.com)



Complies with EN 60825-1:1994+A1+A2  
and Complies with 21 CFR 1042.10 and  
1042.11 except for deviation pursuant to  
Laser Notice No.50, dated July 28, 2001.

## Class 2 Laser Product

# CAUTION

AVOID EXPOSURE-HAZARDOUS ELECTROMAGNETIC RADIATION EMITTED FROM THIS APERTURE. LASER RADIATION. DO NOT STARE INTO THE BEAM OR VIEW DIRECTLY WITH OPTICAL INSTRUMENTS. CLASS 2 LASER PRODUCT. NEVER POINT A LASER BEAM INTO A PERSON'S EYES OR VIEW A LASER BEAM DIRECTLY. AS PROLONGED EXPOSURE CAN BE HAZARDOUS TO THE EYES. MOMENTARY EXPOSURE FROM A LASER POINTER, SUCH AS AN INADVERTENT SWEEP OF THE LIGHT ACROSS A PERSON'S EYES, MAY CAUSE TEMPORARY FLASH BLINDNESS SIMILAR TO THE EFFECT OF A CAMERA FLASH BULB. ALTHOUGH THIS CONDITION IS TEMPORARY, IT CAN BECOME MORE DANGEROUS IF THE EXPOSED PERSON IS ENGAGED IN A VISION-CRITICAL ACTIVITY SUCH AS DRIVING. CAUTION: ANY CHANGES OR MODIFICATIONS NOT EXPRESSLY APPROVED BY THE PARTY RESPONSIBLE FOR COMPLIANCE COULD VOID THE USER'S AUTHORITY TO OPERATE THE EQUIPMENT. THIS DEVICE AND ITS ANTENNA(S) MUST NOT BE CO-LOCATED OR OPERATING IN CONJUNCTION WITH ANY OTHER ANTENNA OR TRANSMITTER. YOUR DEVICE CONTAINS A LOW POWER TRANSMITTER. WHEN DEVICE IS TRANSMITTED IT SENDS OUT RADIO FREQUENCY (RF) SIGNAL. NOTE: THE MANUFACTURER IS NOT RESPONSIBLE FOR ANY RADIO OR TV INTERFERENCE CAUSED BY UNAUTHORIZED MODIFICATIONS TO THIS EQUIPMENT. SUCH MODIFICATIONS COULD VOID THE USER'S AUTHORITY TO OPERATE THE EQUIPMENT.

### **SAFETY MEASURES**

- To avoid possible eye damage, never point the presenter's laser at people, especially their faces, or look directly into the presenter's laser beam.
- Avoid pointing the presenter's laser beam at a mirror or other reflective surface.
- Keep the presenter away from young children.
- Never view the presenter's laser beam using telescopic devices
- Any attempt to disassemble, adjust or repair the presenter may result in exposure to laser light or other safety hazards.