

LED Status Indicators

Turning on: The blue indicator light blinks for 3 seconds, the headset is turned on successfully.

Turning off: The red indicator light is continuously displayed for 3 seconds, the headset is turned off successfully.

Charging: LED flashes red, the headset is charging.

Pairing: LED flashes blue and red alternately, the headset is pairing.

Paired: The blue indicator light is blinking.

Pairing failed: The red indicator light and the blue indicator light are displayed together for 2 seconds.

Standby: The blue LED blinks slowly.

Connected: LED flashes blue once every 5 seconds.

Low battery: LED flashes red once every 5 seconds, the headset battery level is low and you need to charge your Headset.

Please Note:
When the battery voltage remaining 3.2V, LED flashes red once every 5 seconds and short beep tones will be heard every 3 to 5 seconds.

Troubleshooting

● Noise is heard For optimal performance, please wear the headset and your mobile phone on the same side of your body. Sometimes audio quality is related with the mobile phone network. Ensure the headset is within a maximum of 10 meters of your mobile phone and there are no obstructions, such as walls or other electronic devices between.

● The headset can not be turned on
The Headset battery may be too low. Try to charge the Headset (charging indication will be delayed for a few seconds if the headset battery is drained).

● Unable to connect your headset with mobile phone
1. Ensure the headset enters pairing mode.

2. Ensure your mobile phone's Bluetooth feature is activated. Please refer to your mobile phone user guide for specific instructions.
*If the above steps do not resolve your problem, please recharge the headset.

● Can not use some functions such as last number redialing, voice dialing and listening to music

Your mobile phone will need to support these functions. Please refer to your mobile phone's user guide for additional information.

Glossary

1. Bluetooth: Bluetooth technology is a short-range (about 10 meters) wireless technology intended to replace the cables connecting devices to connect mobile phone with the headset.

2. Bluetooth profiles: Bluetooth profiles are the different ways for devices to communicate with other devices. Bluetooth mobile phones need to support headset profiles and hands-free profiles or both. The phone's manufacturer needs to add specific functions in the software of the phone to support these profiles.

3. Pairing: To build a unique encrypted connection between two devices and enable the communication between the two devices. Bluetooth devices can work only after paired.

4. Passkey or PIN: Passkey or PIN is the codes you put into your phone. They are used to pair your headset with the phone. If the phone already

Paired with the headset, the phone and the headset will authenticate the identity of each other and cooperate automatically.

5. Standby mode: The headset is passively waiting for the incoming calls. When a call is ended in the mobile phone, the headset enters standby mode.

Technology Data

● Model No.: LH-063

● Technology Specifications
Up to 5.5 hours talk time/120 hours standby time
About 10 meters (about 33 feet) operation range
Complying with Bluetooth headset profiles and hands-free profiles
Bluetooth Version 2.0
Weight less than 10g

Different charging way: AC adapter, PC with USB cable.

● Operating Temperature:
Highest: +55°C
Lowest: -10°C

● Battery Voltage
3.7V 15mA

● Charge Voltage
5V 50mA

Safety Norm

1. Ensure you are using the headset correctly and safely according to the local law.

2. Never allow children to play with the headset.

3. Observe all signs that require an electrical device or RF radio product to be switched off in designated areas. There could include hospital, blasting areas, and potentially explosive atmospheres.

4. Turn off your headset prior to boarding an aircraft. Do not use your headset in an aircraft.

5. Do not attempt to open or mutilate the built-in battery.

6. Do not attempt to disassemble the headset as it does not contain serviceable components.

Changes or modifications not expressly approved by the party responsible for compliance could void the user's authority to operate the equipment.



7. If you will not use the headset for a long period, please store it in a dry place that is free from extreme temperature and dust.

8. Do not attempt to replace the headset's battery by yourself as it is built-in and is not changeable.

9. Use only the charger supplied by the headset's original manufacturer to charge the battery.

10. Do not attempt to disassemble the charger as it may expose you to dangerous voltages or other risks, incorrect reassembly can cause electric shock when the headset is reused.

11. Avoid charging the headset in extremely high or low temperatures.

Care and Maintenance

1. Please store the headset safely with the power off.

2. Avoid storage in extreme temperatures (above 45°C/113°F, such as in direct sunlight, or down to -10°C/14°F). This can reduce the battery life and may affect operation. Extreme temperature may also degrade performance.

3. Do not expose the headset to rain or other chemical liquids.

4. Do not use abrasive cleaners to clean the headset.

5. Do not dispose of your headset in a fire as it will result in an explosion.

6. Do not bring your headset into contact with any sharp objects as this will cause scratches and damage.

7. Do not store the headset in dusty areas.

8. Do not leave your headset under the hot sun for a long time.

9. Do not stick anything inside the headset as this may damage internal components.

10. Do not pull or drag the earpiece-wire with force.

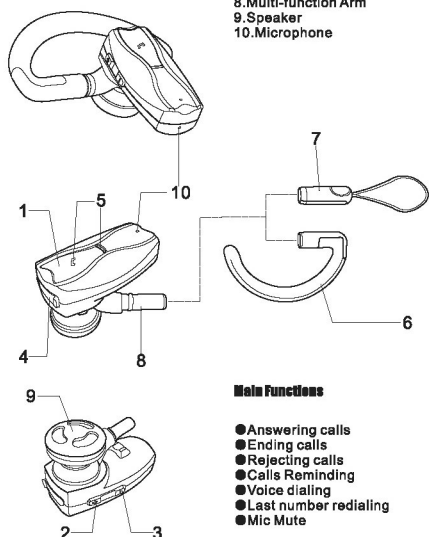
11. Do not leave your headset near open flames such as cooking burners.

12. Do not expose the headset to liquid, moisture or humidity as it is not waterproof.

This device complies with Part 15 of the FCC Rules. Operation is subject to the following two conditions: (1) this device may not cause harmful interference, and (2) this device must accept any interference received, including interference that may cause undesired operation.

Introduction

Thank you for choosing an advanced, exquisite and stylish Bluetooth Headset of DESAY. Hoping you will be satisfied with LH-063.



About LH-063

1. Multi-function Button (MFB)
2. Volume + Button
3. Volume - Button
4. Charging Jack
5. LED Indicator Light
6. Ear Hook
7. Headset Cord
8. Multi-function Arm
9. Speaker
10. Microphone

Main Functions

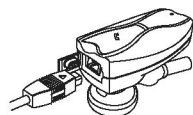
- Answering calls
- Ending calls
- Rejecting calls
- Calls Reminding
- Voice dialing
- Last number redialing
- Mic Mute

11

General Usage

1. Charging Your Headset

The headset comes with a built-in rechargeable battery. Prior to using your headset for the first time, it is recommended to fully charge the battery first. You can use AC adapters or a PC with standard USB cable to charge the headset (refer to figure below).



The red indicator light is displayed during charging. When the battery is fully charged, the blue indicator light is displayed and the red indicator light turns off.

Please note:

The indicator light flashes red and blue alternately once after inserting the charger plug into the headset's charger socket. The red indicator light will be delayed to display for about one minute. The headset will not function while charging.

Please do not unplug the charger plug from the headset before the red or blue indicator light is displayed during the charging. If the headset can not work order, please charge it in time to reset the headset. You can use the headset again until the red indicator light is displayed.

12

2. Turning Your Headset On and Off

● In the power for mode, To turn the headset on, press and hold the MFB for 2 seconds until the blue indicator light flashes and a short beep tone is heard.

● In the standby mode, To turn the headset off, press and hold the MFB for 3 seconds until the red indicator light is displayed and a long beep tone is heard.

3. Pairing Your Headset

Before using your headset you should first pair it with the mobile phone. Follow the steps below:

Ensure the headset is off. Press and hold the MFB for 5 seconds until the indicator light flashes blue and red alternately and discontinuous beep tones are heard. Set your mobile phone into pairing mode, generally is enter "setting", "connection" or "Bluetooth" menu, then "adding" or "searching".

Then enter the PIN number "0000" to pair your headset with the mobile phone.

If the pairing is successful, the blue indicator light blinks and 2 continuous short beep tones are heard. If the pairing is failed, the red indicator light and the blue indicator light are displayed together for 2 seconds and 1 long beep tone is heard.

4. Using Your Headset

● Answering a call

When there is an incoming call, briefly press the MFB once to answer the call.

● Ending a call
Briefly press the MFB to end the currently active call.

● Rejecting a call

To reject the incoming call, press and hold any volume key for 2 seconds.

● Voice dialing
Briefly press the MFB until you hear a short beep tone, then say the voice tag to initiate a call (your phone needs to support voice dialing). Please note:

For voice dialing, you must record the voice tag into your mobile phone before using the voice dialing function on the headset.

● Last number redialing
Press the MFB twice can redial the last number dialed (your mobile phone will need to support this function).

Please note:

The last number can not be redialed while you listening to the music.

● Adjusting the Volume

Press the Volume "+" Button or the Volume "-" Button to adjust the volume until you reach the desired volume level.

● Re-linking

Press the MFB twice to re-link the headset with the phone while the headset is in sleeping mode.

● Transferring a call

During conversation, press and hold the MFB for 2 seconds to transfer the call to the mobile phone. Press and hold the MFB for 2 seconds will transfer the call to the headset while the headset is in standby mode.

● Mic Mute

During conversation, press the Volume "+" Button and the Volume "-" Button together to mute the microphone. The Other side will not hear your sound. Do the same again to deactivate the muting function.

● Auto-pairing

After initial pairing, your headset will store the Phone's ID. Every time you turn the headset on, it will search and pair with the phone.

5 Wearing your headset

You can wear your headset on either ear to you need or preference.

Wearing the Headset with the Ear Hook

The Ear Hook can be used for maximum comfort. To mount the Ear Hook, rotate the Multi-function Arm upwards and slide it inside the Ear Hook jack. To place it on your ear please follow these steps:

1. Rotate the Ear Hook slightly forwards.
2. Gently place the Speaker into your ear.

13

3. Rotate the Ear Hook Backwards and adjust it behind your ear.

4. To switch from one ear to the other, simply rotate the Multi-function Arm downwards and rotate the EarHook to the opposite side.

wear the Headset without using the Ear Hook.

To do as follows:

1. Rotate the Multi-function Arm downward, until it stays in your ear like a wired headset cable extension

2. Gently place the Speaker into your ear canal

3. Finally find the most comfortable position by rotating the Headset forward and backward
Clipping your Headset to your Clothes

The Multi-function Arm Can also be used to carry your headset in several convenient Ways. To clip it to your clothes np need to remove the ear hook, please do the following:

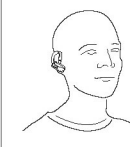
1. Rotate the Multi-function Arm as per previous steps.
2. Use the Multi-function Arm and Headset as a clip to attach the Headset to your clothes. Using the Headset Cord to carry your Headset

The Headset Cord can also be used to carry your Headset with your mobile phone (Ear Hook not mounted To attach your Headset to the Headset Cord please follow these steps:

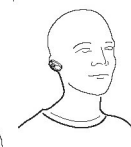
1. Rotate the Multi-function Arm until it is in opposite direction with the microphone
2. Attach the Multi-function Arm to the Headset Cord



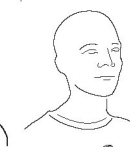
Wear the Headset with hook



Wearing the Headset without hook



Clipping the Headset to your clothes



14